



WILLIAM & MARY

MEDIA RELATIONS DIRECTOR: Andrew Phillips / PHONE: (757) 221-3344 / CELL: (804) 840-4439 / EMAIL: atphillips01@wm.edu

TRIBE BY THE NUMBERS

14.8	W&M is third in the CAA with 14.8 assists per game. The Tribe has 355 assists this season.
17	Gabby Rogers scored a career-high with 17 points against Towson on Friday night. The sophomore has set a new career-high in point in two of her last three games.
15	Senior Bianca Boggs now has 15 career 20-point performances. With her next 20-point game she will move into a tie for sixth place in W&M history.
60	Boggs ranks 60th in the country with 58 steals this season. Her 2.4 steals rank her No. 55 in the NCAA.
70	70 seems to be a magic number under Swanson. W&M has reached that mark 43 times under Swanson, and has posted a 39-8 mark when it scores more than 70 points.
90%	Since the start of CAA play, Eva Hodgson is shooting 90.9-percent from the free throw. She has connected on 40-of-44 from the stripe in the past 12 games.
236	Freshman Eva Hodgson has scored 236 points this season, which 49 points away from the top 10 in freshman history at W&M.
1329	Boggs now has 1,329 career points that ranks her 10th in school history. The senior needs 12 points to pass Angie Evans '91 for ninth, and 21 to move into sole possession seventh.

WHEN REFERENCING WILLIAM & MARY AND TRIBE:

William & Mary: preferred in all but formal treatments
W&M: most informal, use as second reference or on scorebug
College of William & Mary: preferred formal treatment
Do not use: WM, William and Mary, College of William and Mary, The College of William and Mary, The College

The William & Mary Athletics official nickname is the Tribe. While the Griffin is the official mascot of William & Mary Tribe Athletics, do not reference teams or the school as the Griffins.

GAME

25

WILLIAM & MARY (12-12, 5-8 CAA) vs. JAMES MADISON (21-4, 13-1 CAA)

Sunday, Feb. 24, 2019 | 2:00 PM | Williamsburg, Va. | Kaplan Arena
Video: TribeAthletics.TV | Live Stats: TribeAthletics.com

SERIES HISTORY

ALL-TIME	JMU leads 71-17	Last: JMU, 65-48 (JMU Convocation Center) (1/25/19)
AT W&M	JMU leads 31-11	Last: JMU, 86-41 (Kaplan Arena) (2/2/18)

W&M NEWS AND NOTES

- The William & Mary women's basketball team closes its two-game homestand as it plays host to James Madison on Sunday afternoon. The game is the team's annual pink game, and tips off at 2 p.m.

- Today's game is the 89th meeting between James Madison and W&M. The Dukes lead the all-time series 71-17 heading into today's contest. The Tribe is looking to even the season series after JMU picked up a 65-48 victory at home on Jan. 25.

- Senior Victoria Reynolds is averaging double-figures for the second consecutive season, and is second on the team with 10.5 points per game. This year she has really improved her range from 3-point land and is connecting on 42.9-percent (18-of-42) from range. On Friday night, the junior set a new career-high with four 3-pointers.

- For the sixth time this season, W&M put four players into double-figures in its win at Elon on Feb. 17. The Tribe is 4-2 this season when four or more players score double digits.

- Freshman Eva Hodgson won her third CAA Rookie of the Week honor for the week Feb. 11. Hodgson averaged 18.5 points, 3.5 rebounds, and 2.0 assists per game during the week. The Tribe has won five weekly awards as Hodgson has also won on Dec. 3, Jan. 7, and Feb. 11, while senior Bianca Boggs was CAA Player of the Week on Dec. 31 and freshman Emma Krause was rookie of the week on Dec. 24.

- The Green and Gold is limiting its opponents to 28.1-percent (114-of-406) from 3-point range this season. The Tribe ranks third in the league in the category, but that is also good enough for 32nd nationally.

- W&M has moved its free throw percentage back to first in the CAA shooting 74.9-percent from the stripe. W&M's free throw percentage ranks 36th in the country. The Tribe shot a perfect 16-for-16 from the line at James Madison on Jan. 25, which was the first time the Tribe was perfect from the line (minimum 8 attempts) since 2016.

- W&M has outscored its opponents 752-733 in the first half games this season, but has been outscored 796-779 in the second half of games. W&M is 12-0 when it leads at the break, but is 0-12 when it trails or is tied at the half.

- The Green and Gold is hitting 3-pointers at the highest clip under Ed Swanson this season, and has had five, or more, 3-pointers in 21 of its 24 games. W&M ranks first in the CAA hitting 7.3 3-pointers per game. That mark is two more than the next best average in the six-years under Swanson. As a team, the Tribe is hitting 34.7-percent from range, which is second in the CAA, and 58th in the NCAA. Furthermore, W&M has hit more than 10 3-pointers in six games this season.

- Hodgson has started every game this season and the returns on the rookie point guard have been good. The freshman has been in double-figures in 13 games. For the season, Hodgson is averaging 9.8 points per game (most among CAA freshman), with 2.9 rebounds, and 3.0 helpers per contest. Hodgson scored a career-high 24 points at UNCW on Feb. 10, and is shooting 90.9-percent from the stripe since the start of CAA play.

- Boggs has been in double-figures in 21 of 24 games this season, and has accomplished that feat in 46 of her last 54 contests. Boggs was selected to the Preseason All-CAA First-Team after a breakout junior season. The senior captain leads the team with 16.8 points per night, and has added 7.3 rebounds and 3.7 assists per night. She is one of three players nationally to lead her team in points, rebounds, assists, steals, and blocks as of Feb. 20. The senior has turned in 15, 20-point career games, which ranks her tied for seventh all-time in school history.

	Nov. 6	VCU	L, 55-72	Senior Bianca Boggs scored 15 points, but the Tribe couldn't overcome an early scoring drought falling to in-state rival VCU on opening night.
	NOV. 12	HOWARD	W, 88-75	Four players scored in double-figures as the Tribe picked up its first victory of the season. Senior Bianca Boggs led the Tribe with 26 points, nine rebounds, and seven assists.
	Nov. 17	at Loyola (Md.)	W, 65-49	The Tribe led throughout as it won its first road game of the season with a convincing 65-49 decision at Davidson. Boggs (14) and Reynolds (10) were both in double-figures.
	Nov. 24	at Davidson	L, 65-76	W&M fought all afternoon, but Davidson pulled away down the stretch as it fell to Davidson 76-65. Bianca Boggs notched a double-double with 18 points and 10 rebs.
	NOV. 27	ECU	W, 63-43	Both Victoria Reynolds and Nyla Pollard recorded a double-double as the Tribe cruised to a 20-point victory after previously unbeaten East Carolina.
	Nov. 30	at Hartford	L, 45-50	W&M couldn't overcome a cold shooting night as it shot just 22.2-percent (12-of-54) from the floor. Freshman Eva Hodgson led the team with a career-high 14 points.
	Dec. 2	at Fairfield	W, 60-54	The Tribe outscored the Stags 6-0 in the final moments to pick up its fourth win of the season. Senior Bianca Boggs scored a game-high 22 to pace the Tribe.
	Dec. 5	RICHMOND	W, 65-55	W&M never trailed as it picked up its third straight win against Richmond. Freshman Eva Hodgson (15 pts) and Harper Birdson (13 pts) both had career-highs.
	Dec. 8	at Old Dominion	L, 69-83	ODU snapped a three-game losing streak to the Tribe at home. Redshirt sophomore Harper Birdsong led the Tribe with a career-high 18 points.
	Dec. 21	at Norfolk State	W, 55-44	The Tribe used a strong defensive effort to gut out a 55-44 road win at Norfolk State following a 13-day lay-off. Sophomore Harper Birdsong had a game-high 14 points off of the bench.
	DEC. 29	GEORGE WASHINGTON	W, 73-59	Senior Bianca Boggs recorded her second double-double with 26 points and 10 rebounds as the Tribe topped GW in a wire-to-wire win, 73-59.
	Jan. 4	at Hofstra*	W, 60-55	Senior Bianca Boggs had another double-double (22 pts, 10 reb) and freshman Eva Hodgson had a career-high 18 points as W&M won its second-ever game at Hofstra.
	Jan. 6	at Northeastern*	L, 74-88	Three scored in double-figures, but W&M couldn't overcome a big second half from Northeastern. Senior Bianca Boggs recorded her third straight 20-point game with 21.
	JAN. 11	UNCW	W, 70-64	W&M closed the first quarter on 17-0 run and never looked back as it picked up a 70-64 victory over UNCW. Bianca Boggs had 25 points and Victoria Reynolds had 17.
	JAN. 13	CHARLESTON	L, 54-66	The Tribe tied the game three times, but couldn't overcome a fiery Charleston team. Senior Bianca Boggs scored a game-high 18 points in the contest.
	JAN. 20	ELON *	W, 65-60	W&M used a 15-3 run to end third quarter and start the fourth to topple defending CAA Champion Elon. Bianca Boggs and Harper Birdsong led the team with 13 points.
	Jan. 25	at James Madison *	L, 65-48	The Tribe couldn't shake a tough shooting night and a slow start as it fell at James Madison. Freshman Eva Hodgson led the Tribe with 13 points.
	Jan. 27	at Towson*	W, 80-69	Four scored in double-figures as the Tribe became the first team to win at SECU this arena with an 80-69 triumph. Senior Bianca Boggs finished with a game-high 22 points.
	FEB. 1	DELAWARE*	L, 59-70	W&M couldn't overcome a fast Delaware start as it fell at home to the visiting Blue Hens. Four scored in double-figures for the Tribe led by Reynolds with 14 points.
	FEB. 3	DREXEL*	L, 58-62	The Tribe made a furious fourth-quarter comeback, but Drexel held on to pick up a 62-58 victory. Senior Bianca Boggs scored 17 points to lead the Tribe.
	Feb. 8	at Charleston*	L, 77-79 (2ot)	Charleston's Tyler Collins hit a lay-up with 4.7 seconds left in double overtime to sink the Tribe in Charleston. Senior Bianca Boggs poured a game-high 23 points.
	Feb. 10	at UNCW*	L, 58-66	UNCW scored the final 10 points of the game to even the season series against the Tribe at Trask Coliseum. Freshman Eva Hodgson scored a career-high 24 to lead W&M.
	Feb. 17	at Elon *	W, 64-59	The Tribe scored 15 of the first 17 points and the last five points of the game to snap its skid. Four were in double-figures led by freshman Eva Hodgson with 14 points.
	FEB. 22	TOWSON*	L, 75-82	Towson used a fourth quarter rally to squeak by W&M at Kaplan Arena on Friday night. Senior Bianca Boggs had 18 points, while sophomore Gabby Rogers scored 17 points.
	FEB. 24	JAMES MADISON*	2 PM	W&M will raise breast cancer awareness as it welcomes James Madison to Kaplan Arena. The Dukes have won the last two meetings in Kaplan Arena.
		Video: TribeAthletics.TV		
	March 1	at Drexel*	7 PM	Drexel and W&M meet for the final time in the regular season when the Tribe travels to Philly. The Dragons are the defending CAA regular season champion.
		Video: CAA.TV		
	March 3	at Delaware*	2 PM	The Tribe heads to the site of the 2019 CAA Tournament when it travels to Delaware. W&M is 3-2 under Ed Swanson at Delaware during his tenure.
		Video: CAA.TV		
	MARCH 7	NORTHEASTERN*	7 PM	The Green and Gold plays host to Northeastern in its penultimate regular season game. The Tribe has a seven-game winning streak against the Huskies in Williamsburg.
		Video: TribeAthletics.TV		
	MARCH 9	HOFSTRA*	2 PM	W&M closes the regular season with the team it started CAA play against. The Tribe picked up a 63-53 victory over the Pride at Kaplan Arena last year.
		Video: TribeAthletics.TV		
	Mar. 13-16	CAA Championship		Delaware hosts the 2019 CAA Tournament at the Bob Carpenter Center in Newark, Del. The event runs from March 13-16.



GENERAL INFORMATION

Name: College of William & Mary
Location: Williamsburg, Va.
Founded: 1693 (2nd oldest college in U.S.)
Enrollment (includes graduate): 8,617
Nickname: Tribe
Colors: Green, Gold and Silver
Arena (capacity): Kaplan Arena (8,600)
Affiliation: NCAA Division I
Conference: Colonial Athletic Association (CAA)
President: Katherine A. Rowe (Carleton, 1984)
Chancellor: Robert M. Gates (William & Mary, 1965)
Director of Athletics: Samantha K. Huge (Gordon, 1992)

LAST GAME STARTERS

2

BIANCA BOGGS

Sr. • G • 5-9

Waldorf, Md./St. Mary's Ryken

- Named team captain for the 2018-19 season.
- Tabbed CAA Player of the Week for the week of Dec. 31.
- Has 15 20-point games, including eight 20-point games this season.
- Scored a career-high 33 points in a win at St. Francis (12/2/17).
- Ranks 12 in school history with 1,259 career points.

G-GS	PPG	RPG	APG	FG%	3P%	FT%	STL	BLK
24-24	16.8	7.1	3.9	.424	.330	.712	58	21

10

EVA HODGSON

Fr. • G • 5-9

Rindge, N.H./New Hampton School

- Named CAA Rookie of the Week for the week of Dec. 3, Jan. 7, and Feb. 11.
- Poured in a career-high 24 points at UNCW (2/10).
- Scored a then-career-high 18 points in the CAA opening win at Hofstra (1/4).
- Netted 13 pts and grabbed a CH six boards with five dimes in the win at Towson (1/20).
- Her parents and two brothers all played Division III basketball.

G-GS	PPG	RPG	APG	FG%	3P%	FT%	STL	BLK
24-24	9.8	2.9	3.0	.437	.388	.829	33	11

11

NYLA POLLARD

So. • G • 5-9

Virginia Beach, Va./Princess Anne

- Made her first start of the year & had a double-double (10 pts, 12 reb) vs. ECU (11/27).
- Scored eight points, two rebounds, and four assists in the win at Towson (1/27).
- Had nine points and added two rebounds, four assists, and a steal at Loyola (11/17).
- Scored a career-high 14 points, four assists, three rebounds against Upstate (12/5/17).

G-GS	PPG	RPG	APG	FG%	3P%	FT%	STL	BLK
24-20	4.3	2.8	2.6	.284	.229	.684	25	3

25

GABBY ROGERS

So. • C • 6-2

Dallas, Texas/Bishop Lynch

- Named a team captain for her senior season.
- Key reserve in the post that has appeared in 64 career games.
- Made her first career start at UNCW (2/10) & grabbed a CH six boards in a CH 20 mins.
- Tied a career-high with four points in a win at St. Francis (12/1/17).
- Rejected 28 shots during her career.

G-GS	PPG	RPG	APG	FG%	3P%	FT%	STL	BLK
23-20	4.5	2.9	0.3	.489	.000	.889	15	8

30

VICTORIA REYNOLDS

Jr. • F • 5-10

Fairfax, Va./Archbishop Spalding

- Recorded a double-double with 15 points and 15 rebounds against ECU (11/27/18).
- Tied a season-high 17 points and five rebounds at Charleston (2/8).
- Notched a season-high 17 points with 7 rebs vs. UNCW (1/11).
- Poured in a career-high 22 points in the win at St. Francis (12/2/17).
- Grabbed 18 boards in the win against Charleston (1/26/18).

G-GS	PPG	RPG	APG	FG%	3P%	FT%	STL	BLK
24-21	10.6	5.5	2.1	.443	.429	.795	32	16

RESERVES

POS.	NO.	NAME	HT.	CL.	G-GS	PPG	RPG	APG	FG%	3P%	FT%	MISC.
G	0	Libby Underwood	5-9	So.	12-0	0.8	0.3	0.2	.308	.000	.500	1 stl

NOTE: Scored six points in the second half of the game versus VCU (11/6).

G	1	Sydney Wagner	5-6	So.	-	-	-	-	-	-	-	-
---	---	---------------	-----	-----	---	---	---	---	---	---	---	---

NOTE: Transfer from Stetson that has to sit out the 2018-19 season due to NCAA Transfer Rule

G	3	Ashley Taylor	5-8	Jr.	4-0	0.3	0.0	0.0	.000	.000	.500	-
---	---	---------------	-----	-----	-----	-----	-----	-----	------	------	------	---

NOTE: Has appeared in 24 career games in career.

G/F	5	Misha Jones	5-9	Sr.	24-3	3.5	1.9	1.1	.426	.386	.875	3 stl
-----	---	-------------	-----	-----	------	-----	-----	-----	------	------	------	-------

NOTE: Matched a career-high with nine points vs. UNCW (1/11)

G	12	Harper Birdsong	5-10	R-So.	24-4	9.9	1.8	1.1	.387	.383	.750	17 stl
---	----	-----------------	------	-------	------	-----	-----	-----	------	------	------	--------

NOTE: First player off of the bench; Scored a career-high 18 at ODU (12/5).

F	15	Emma Krause	6-2	Fr.	24-3	4.4	2.1	0.5	.350	.338	.583	12 blk
---	----	-------------	-----	-----	------	-----	-----	-----	------	------	------	--------

NOTE: Been in double-figures twice this season; Had a career-high 14 points against Howard.

C	20	Chandler Smith	6-3	Sr.	12-1	0.2	1.3	0.1	.333	.000	.250	4 blk
---	----	----------------	-----	-----	------	-----	-----	-----	------	------	------	-------

NOTE: Named a team captain for the season; Appeared in 65 career games.

G/F	21	Bailey Eichner	6-1	So.	14-0	0.2	1.1	0.2	.111	.000	.500	3 stl
-----	----	----------------	-----	-----	------	-----	-----	-----	------	------	------	-------

NOTE: Had a career-high six rebounds at ODU (12/5)

C	32	Caroline Stover	6-3	Fr.	2-0	0.0	0.0	0.0	.000	.000	.000	-
---	----	-----------------	-----	-----	-----	-----	-----	-----	------	------	------	---

NOTE: Ranked as the No. 131 recruit in her class on BlueStar

W&M INDIVIDUAL SUPERLATIVES

Double-Digit Games	16-17	17-18	18-19	Career	Double-Doubles	16-17	17-18	18-19	Career
Bianca Boggs	8	25	21	63	Bianca Boggs	-	1	4	6
Victoria Reynolds	4	15	16	35	Victoria Reynolds	-	1	1	2
Harper Birdsong	-	-	14	14	Nyla Pollard	-	-	1	1
Eva Hodgson	-	-	13	13	Gabby Rogers	-	-	1	1
Nyla Pollard	-	3	1	4					
Gabby Rogers	-	-	3	3					
Emma Krause	-	-	2	2					

Leading Scorer (times): - Boggs (15), Hodgson (5), Birdsong (3), Reynolds (2)

20-Point Games

16-17	17-18	18-19	Career
Bianca Boggs	-	7	8
Eva Hodgson	-	-	1
Victoria Reynolds	-	1	1

Leading Rebounder (times): - Boggs (11), Reynolds (10), Rogers (3), Eichner (1), Hodgson (1), Jones (1), Pollard (1)

30-Point Games

16-17	17-18	18-19	Career
Bianca Boggs	-	1	1

Leading Assists (times): - Boggs (13), Hodgson (8), Pollard (4), Reynolds (2), Birdsong (2), Jones (1)

10-Rebound Games

16-17	17-18	18-19	Career
Bianca Boggs	1	1	5
Victoria Reynolds	-	4	3
Gabby Rogers	-	-	1

Charges (times): - Jones (13), Hodgson (8), Rogers (6), Eichner (6), Birdsong (1), Boggs (1)

10-Assist Games

16-17	17-18	18-19	Career
-------	-------	-------	--------

Three-Point Plays (Made/Attempted): - Birdsong (3/3), Krause (2/2), Rogers (2/2), Hodgson (1/1), Jones (1/1), Boggs (17/20), Reynolds (1/3), Pollard (0/2)**Four-Point Plays (Made/Attempted):** - Jones (1/1)

WOMEN'S BASKETBALL INFORMATION

Head Coach: Ed Swanson (Sacred Heart, 1989)
Record at W&M: 86-89 (sixth season)
Career Record: 492-353 (29th season)
Assistant Coach: Lynne-Ann Kokoski (Bryant, 2008)
Assistant Coach: Chanel Murchison (William & Mary, 2013)
Assistant Coach: Tierra Rudd (Winston-Salem, 2008)
Dir. of Operations: Michelle Kurowski (UMBC, 2011)
2017-18 Record (CAA): 16-14 (7-11/6th)
Starters Returning/Lost: 3/2
Letterwinners Returning/Lost: 10/4
First Year of Basketball: 1919-20
All-Time Record: 666-965-9
WNIT Appearances: None
NCAA Appearances: None

TRIBE TRENDS

WILLIAM & MARY RECORD	
Overall.....	12-12
CAA Games.....	5-8
Leads at halftime.....	12-0
Trails at halftime.....	0-9
Tied at Halftime.....	0-3
Home.....	6-5
Away.....	6-7
Neutral.....	0-0

BY MONTH	
November.....	3-3
December.....	4-1
January.....	4-3
February.....	1-5
March.....	0-0

SCORING...	
W&M scores fewer than 40 pts.....	0-0
W&M scores 40-49.....	0-2
W&M scores 50-59.....	1-5
W&M scores 60-69.....	7-2
W&M scores 70-79.....	2-3
W&M scores 80+.....	2-0
Opp. scores fewer than 40 pts.....	0-0
Opp. scores 40-49.....	3-0
Opp. scores 50-59.....	6-1
Opp. scores 60-69.....	3-4
Opp. scores 70-79.....	0-4
Opp. scores 80+.....	0-3

FROM THE FIELD ...	
W&M shoots below 35%.....	0-3
W&M shoots better than 35%.....	12-9
W&M shoots better than 40%.....	9-3
W&M shoots better than 45%.....	10-2
W&M shoots better than 50%.....	1-1

FINAL MARGIN	
1-3 points.....	0-1
4-7 points.....	5-3
8-10 points.....	1-1
11-15 points.....	4-5
16+ points.....	2-2
In Overtime.....	0-0

BATTLE OF THE BOARDS	
Outrebounding opponent.....	3-1
Outrebounded by opponent.....	8-10
Rebounds are even.....	1-1

DOWN TO THE WIRE	
Leading with 5:00 left.....	10-2
Trailing with 5:00 left.....	1-9
Tied with 5:00 left.....	1-1

LAYING IT ON THE LINE...	
W&M attempts more free throws.....	4-3
Opp. attempts more free throws.....	7-8
Free Throws are even.....	1-1

JERSEY COLOR	
White.....	5-3
Green.....	5-5
Gold.....	2-4
Pink.....	0-0

STRENGTH OF OPPOSITION	
vs. Top 25 teams.....	0-0
vs. teams with a winning record.....	4-6
vs. teams .500 record.....	1-0
vs. teams with a losing record.....	7-5

STREAKING	
Coming off of a win.....	4-8
Coming off of a loss.....	8-3
Longest Winning Streak.....	W3
Longest Losing Streak.....	L4
Current Streak.....	L1

**Team**

W&M scored 80+ points	1/27/2019	80 (80-69, W at Towson)
W&M scored 85+ points	11/12/2018	88 (88-75, W vs. Howard)
W&M scored 90+ points	12/2/2017	92 (92-86, W at St. Francis (Pa.))
W&M scored 95+ points	2/16/2014	97 (97-44 W, vs. UNCW)
Opponent scored 80+	2/22/2019	82 (75-82 L, vs. Towson)
Opponent scored 85+	2/2/2017	86 (41-86, L vs. James Madison)
Opponent scored 90+	11/17/2017	92 (92-81 L, at St. John's)
W&M grabbed 50+ rebounds	11/27/2018	58 (63-43 W, vs. East Carolina)
W&M grabbed 60+ rebounds	12/21/2006	60 (73-58 W, at Norfolk State)
Held an Opponent to 50 pts. or less	12/21/2018	44 (55-44, W at Norfolk State)
Held an Opponent to 40 pts. or less	12/3/2016	39 (67-39, W vs. Richmond)
W&M was held under 50 pts.	1/25/2019	48 (48-65 L, at James Madison)
Shot 50% from the field	11/17/2018	51.0% (26-for-51) (65-49, W at Loyola)
Shot 80-89% from the foul line (8 or more attempts)	2/17/2019	80.0% (12-for-15) (64-59, W at Elon)
Shot 90-99% from the foul line (8 or more attempts)	2/9/2018	90.0 (9-for-10) (59-68, L at Delaware)
Shot 100% from the foul line (8 or more attempts)	1/25/2019	100% (16-for-16) (48-65, L at James Madison)
Had a 20-pt. win	11/27/2018	20 (63-43 W, vs. East Carolina)
Had a 30-pt. win	11/28/2016	34 (W, 82-48 vs. Delaware State)
Had a 40-pt. win	2/16/2014	53 (97-44 W, vs. UNCW)
Had a 50-pt. win	2/16/2014	53 (97-44 W, vs. UNCW)
Had a 20-pt. loss	3/1/2018	21 (L, 61-82 at Elon)
Had a 30-pt. loss	2/2/2018	45 (L, 41-86 vs. James Madison)
An overtime win	11/21/2017	71-65, W at East Carolina
An overtime loss	2/8/2019	77-79, L at Charleston (2ot)
A double-overtime game	2/8/2019	77-79, L at Charleston
A triple-overtime game	11/29/1999	77-83, L at VCU
10-game winning streak	2016-17	11 (11/18/2016-1/6/17)
5-game winning streak	2017-18	7 (11/21/2017-12/21/2017)
5-game losing streak	2017-18	7 (2/16/2018-11/12/2018)
10-game losing streak	2012-13	11 (11/25/2012-1/20/2013)

Individual

20-24 pts.	24, Eva Hodgson at UNCW, 2/10/19
25-29 pts.	25, Bianca Boggs vs. UNCW, 1/11/19
30-34 pts.	33, Bianca Boggs at St. Francis (Pa.), 12/2/17
35-39 pts.	39, Lynn Norenberg at Virginia Wesleyan, 11/15/80
40+ pts.	53, Bebe Fisher vs. Norfolk Division, 2/13/52
5 players in double figures	Bianca Boggs (26), Victoria Reynolds (15), Abby Rendle (12), Nari Garner (11), Jenna Green (10) vs. College of Charleston, 1/26/18
Two players with 20 pts. or more	Jenna Green (22) and Bianca Boggs (21) at Towson, 2/4/18
Player with 10-14 rebounds	10, Bianca Boggs at UNCW, 2/10/19
Player with 15-19 rebounds	15, Victoria Reynolds vs. East Carolina, 11/27/18
Player with 20 or more rebounds	21, Emily Correal vs. George Mason, 3/16/13
Two players with 10 or more rebounds	15, Victoria Reynolds, 12, Nyla Pollard, & 11 Bianca Boggs vs. ECU, 11/27/18
A player with a triple-double	Abby Rendle (25 pts, 17 reb, 10 blks) at East Carolina, 11/21/17
A player with a double-double	Bianca Boggs (16 pts, 10 reb) at UNCW, 2/10/19
Two players with double-doubles	Victoria Reynolds (15 pts, 15 reb) & Nyla Pollard (10 pts, 12 reb.) vs. ECU, 11/27/18
100% from the field (min. 5 made)	7-for-7, Abby Rendle vs. Drexel, 3/1/17
100% from foul line (min. 5 made)	6-for-6, Gabby Rogers at Charleston, 2/8/19
5-7 Assists	5, Bianca Boggs vs. Delaware, 2/1/19
8-9 Assists	8, Bianca Boggs vs. Towson, 2/22/19
10+ Assists	11, Jenna Green vs. College of Charleston, 1/26/18
5 or more steals	5, Bianca Boggs at UNCW, 2/10/19
5-9 blocks	6, Abby Rendle at Delaware, 2/9/18
10+ blocks	11, Abby Rendle vs. College of Charleston, 1/26/18

BOLD - Happened in the 2018-19 season

**LIBBY UNDERWOOD**

So. • Guard • 5-9
Rye, New Hampshire

**SYDNEY WAGNER**

So. • Guard • 5-6
Phoenixville, Pa.

**BIANCA BOGGS**

Sr. • Guard • 5-5
Waldorf, Md.

**ASHLEY TAYLOR**

Jr. • Guard • 6-0
Charlottesville, Va.

**MISHA JONES**

Sr. • Guard/Forward • 5-9
Manassas Park, Va.

**EVA HODGSON**

Fr. • Guard • 5-9
Rindge, New Hampshire

**NYLA POLLARD**

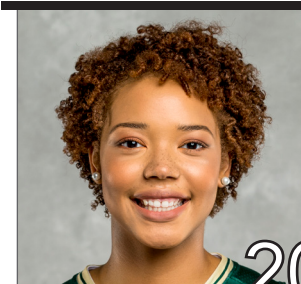
So. • Guard • 5-9
Virginia Beach, Va.

**HARPER BIRDSONG**

R-So. • Guard • 5-10
Suffolk, Va.

**EMMA KRUSE**

Jr. • Center • 6-3
Port Tobacco, Md.

**CHANDLER SMITH**

Sr. • Center • 6-3
Port Tobacco, Md.

**BAILEY EICHNER**

So. • Guard/Forward • 6-1
Cudahy, Wisc.

**GABBY ROGERS**

Fr. • Center • 6-1
Dallas, Texas

**VICTORIA REYNOLDS**

Jr. • Forward • 5-10
Fairfax, Va.

**CAROLINE STOVER**

Fr. • Center • 6-3
Plympton Mass.

**ED SWANSON**

Sixth Season at W&M
29th Overall

PRONUNCIATION GUIDE

Bailey **EICHNER** IKE-ner

Lynne **KOKOSKI**
Kah-kaw-ski

CHANEL Murchison Shh-nell



ED

SWANSON

HEAD COACH

29TH SEASON OVERALL

6TH SEASON AT W&M

PROFILE

Wife: Marion

Children: Connor and Matthew

Education

Sacred Heart, 1989

Coaching Career

Sacred Heart (1989-13)

William & Mary (2013-P)

CAREER HIGHLIGHTS

- Three NCAA Tournament Appearances
- Led W&M to 1st Division I Postseason berth in the WBI.
- Led W&M to a school record 20 wins in 2016-17
- 2016-17 VaSID Coach of the Year
- Six Postseason Appearances
- Four regular season conference championships and three postseason league titles
- 2009 New England Hall of Fame Inductee
- Eight 20-win seasons
- Five-time Conference Coach of the Year
- On five occasions, his teams have earned to the WBCA Academic Top 25 Team Honor

Ed Swanson enters his sixth season with the Green and Gold. He became the fifth Division I head women's basketball coach in William and Mary history on May 7, 2013. Prior to coming to Williamsburg, he spent 23 years transforming Sacred Heart University from a Division II program into a one of the top teams in the Northeast Conference. Swanson owns a career record of 464-327 (.587).

The success continued for the Tribe during the 2017-18 season. W&M won 16 games, which is tied for the fourth most in school history, and posted its second straight winning season for the first time since 2005-06 and 2006-07. His first recruiting class became the winningest class in school history with the team's victory over College of Charleston on Jan. 26. The seniors went onto win 66 games during their four year career. The Tribe raced out to an 11-2 start for the third straight season, which equaled the best 13-game start in school history, and led the CAA in blocked shots (218) and blocked shots per game (7.3), which ranked fourth and third in the NCAA, respectively. Both numbers are single-season school records. Individually, he mentored three players to five All-CAA awards, including All-CAA First-Team selection Bianca Boggs, who became the first Tribe player in a decade to be named to the league's first-team. Additionally, Boggs was named to the league's all-defensive team, while Abby Rendle claimed a spot on the All-CAA Third-Team, and All-Defensive Team, and freshman Nyla Pollard was picked to the CAA All-Rookie team.

Swanson led the Tribe to one of its best seasons in program history in 2016-17. The Tribe tied a school record with 20 wins, while winning a CAA Tournament game for the first time since 2009, and advancing to the CAA Semifinals for the first-time since 2001. Under his leadership, the Tribe won 11-straight games, which is the longest single-23056season streak in school history, from Nov. 18, 2016-Jan. 2, 2017. W&M had four players claim seven all-conference awards this season, including seniors Alexandra Masaquel and Marlena Tremba, who each earned second-team citations. Additionally, Masaquel was tabbed the Richmond Times-Dispatch All-State Second-Team, while Tremba earned VaSID All-State Second-Team honors. For his efforts, VaSID honored him as the Virginia State Coach of the Year.

Once again Swanson's third season was one for the record books. The Tribe raced out to its best start in school history with an 11-2 record. W&M went onto again to win the fourth most wins in school history with 15. For the second straight season the Tribe broke the blocks and assist record, by tying the single season assist record (466) and broke the school record for blocks with 148. During the season junior Marlena Tremba became the 15th player in school history to break the 1000-point barrier. Individually, four players earned All-CAA awards as junior Alexandra Masaquel was tabbed to the second-team and all-defensive team, Tremba earned third-team honors, and freshman Bianca Boggs picked up a spot on the all-rookie team. The Tribe was also rewarded for its hard work in the classroom as Masaquel, Tremba, and sophomore Jenna Green earned all-academic team honors.

Swanson's second year with the Green and Gold was one for the record books. The Tribe racked up 15 wins, the fourth-most in school history, on its way to its first-ever postseason appearances with bid in the Women's Basketball Invitational. The Green and Gold had a seven-win turnaround, while setting three school records for assists (466), blocked shots, (143), blocked shots per game (4.5). Individually he helped lead four players to five All-CAA awards. Sophomore Marlena Tremba was named to the All-CAA Third-Team, senior Jazmen Boone was named to the All-Defensive Team, freshman Abby Rendle to the All-Rookie and All-Defensive team, and senior Kyla Kerstetter earned all-academic honors.

In his first season with the Tribe, Swanson led a young team to eight victories in a seven-seed in the CAA Tournament. The Green and Gold finished in the top 10 nationally in steals per game, while Jazmen Boone also ranked in the top 20 in the NCAA in the same category. Under his guidance Kaitlyn Mathieu garnered Third-Team All-Colonial Athletic Association honors, and went on to sign a professional contract with a team in Germany. In addition, guard Marlena Tremba went onto win CAA Rookie of the Year, and was named to the all-rookie squad. Boone was named to the all-defensive team, while she and Kyla Kerstetter took home all-academic honors.

Swanson oversaw Sacred Heart's transition from Division II to Division I in 1999-00, and the program took off under his direction. Over Sacred Heart's 14 years in Division I, Swanson led SHU



to a 280-145 record (.664), including a 190-62 (.754) record in the NEC. He departed as the NEC's all-time winningest head coach with all of his SHU teams finishing third or higher in the league standings. Swanson-lead teams have posted 13 straight winning seasons and 12 straight campaigns with 18 or more victories, including six with 20 or more wins. In 2009, he was inducted into the New England Basketball Hall of Fame.

In total, Swanson-coached players earned 19 All-NEC honors, including nine first-team awards, nine NEC All-Tournament Team honors, eight NEC All-Rookie Team selections, four NEC Rookies of the Year, three NEC Tournament MVPs and three NEC Players of the Year.

His teams have also enjoyed success in the classroom. On five occasions, the Pioneers were selected to the Women's Basketball Coaches Association (WBCA) Academic Top 25 Team Honor Roll, which has recognized outstanding academic performances from the top teams in each of the five collegiate divisions since 1995-96. On eight occasions since 2003, one of his players was a CoSIDA Academic All-District selection and two Pioneer players were named NEC Scholar-Athlete of the Year.

In 2012-13, Swanson led Sacred Heart to its third straight postseason appearance, and in the process, recorded his 400th career victory. His milestone win came on Feb. 12, 2013 as the Pioneers defeated Fairleigh Dickinson. SHU completed the season at 22-11, finishing second in the NEC with a 13-5 ledger and garnering a berth in the program's first Women's National Invitational Tournament (WNIT).

Sacred Heart claimed its third NEC Championship and advanced to the NCAA Tournament in 2011-12. The Pioneers also ranked 23rd nationally in the WBCA Academic Top 25 Team Honor Roll with a team GPA of 3.35. SHU compiled a season mark to 25-8, winning both the regular season and postseason crowns in the league as Swanson was named NEC Coach of the Year for the fourth time.

The Pioneers earned a berth in the 2011 Women's Basketball Invitational and finished the year at 18-13 with a 12-6 mark in the NEC. After a 0-5 start to the 2008-09 season, Swanson's Pioneers reeled off a 21-game winning streak, the longest in school history and second longest in the country, before finishing with 25-8 record. SHU completed the NEC regular season with a perfect 18-0 mark, becoming just the third team in the history of the conference to accomplish the feat. Swanson earned NEC Coach of the Year honors as Sacred Heart finished off an amazing season by capturing its second league title and trip to the NCAA Tournament over a four-year span. During the 2008-09 season, Swanson moved past former Mount St. Mary's head coach Bill Sheahan (124) as all-time leader in Northeast Conference wins and eclipsing the 300-win plateau in his career.

The 2005-06 season saw Swanson lead the Sacred Heart program to its first NCAA Tournament, capturing the NEC Championship in just its seventh season at the Division I level. Swanson guided the Pioneers to a school record 26-5 record, including a 16-2 NEC ledger. He also garnered career victory No. 250 during the season.

Under his leadership, Sacred Heart was one of the toughest teams on its home court, the William H. Pitt Center, which opened in 1997. During the Pitt Center's opening 16 seasons, Swanson's teams won 81.9 percent (185-41) of its home games. In 2011-12, SHU went 15-1 at home, a season bested only by a perfect 15-0 in 2005-06 and 14-0 in 2003-04. During the stretch, the Pioneers' home winning percentage at the Pitt Center ranked among the best nationally.

After directing the Pioneers to a 20-7 record — the program's first 20-win season — in 1995-96, Swanson was voted Coach of the Year in the New England Collegiate Conference (NECC) and the Women's Basketball Coaches Association's (WBCA) District I.

Swanson took the reins of the Sacred Heart University women's basketball program in 1990 and built the Pioneers into one of the top teams in the Northeast. He joined Dave Bike's men's basketball coaching staff at SHU in 1989, and, after becoming head coach of the Pioneer women's program in 1990, did double duty for three seasons before becoming the University's first full-time women's coach in 1993. Prior to Swanson's arrival,

CAREER RECORD

YEAR	OVERALL RECORD	CONF. RECORD	CONF. FINISH	POST SEASON
1990-91	8-19	3-11	7th	
1991-92	11-16	5-9	T5th	
1992-93	16-13	7-7	4th	
1993-94	12-15	8-8	5th	
1994-95	11-16	7-9	5th	
1995-96	20-7	16-4	T2nd	
1996-97	14-14	10-8	5th	
1997-98	19-7	13-3	2nd	
1998-99	15-12	12-6	3rd	
1999-00	14-14	11-7	T3rd	
2000-01	15-14	11-7	T3rd	
2001-02	18-11	13-5	T2nd	
2002-03	18-10	12-6	T3rd	
2003-04	21-8	14-4	2nd	
2004-05	18-11	14-4	2nd	
2005-06	26-5	16-2	1st	NCAA
2006-07	22-10	15-3	T1st	
2007-08	19-11	14-4	3rd	
2008-09	25-8	18-0	1st	NCAA
2009-10	19-11	14-4	3rd	
2010-11	18-13	12-6	T3rd	WBI
2011-12	25-8	15-3	1st	NCAA
2012-13	22-11	13-5	2nd	WNIT
2013-14	8-21	5-11	8th	
2014-15	15-16	9-9	6th	WBI
2015-16	15-15	6-12	7th	
2016-17	20-11	9-9	4th	
2017-18	16-14	7-11	6th	
2018-19	12-12	5-8		
Career	492-353 (.582)	297-187 (.614)		
Division I	366-234 (.610)	232-122 (.655)		
W&M/CAA	86-89 (.491)	41-60 (.406)		

the Sacred Heart women's team compiled a 4-21 record. Under his guidance, the climb to Division II respectability was accomplished within three seasons, from 8-19 to 11-16 and, in 1992-93, to 16-13 — the program's first winning record in 11 seasons.

In his time at SHU, he was a four-time NEC Coach of the Year, led Sacred Heart to five postseason bids, including three NCAA Tournament appearances. Swanson guided the Pioneers to four NEC regular season crowns and three NEC tournament championships. SHU posted 20-win seasons seven times during his tenure, including five of the last eight years.

He earned a bachelor's degree in business from Sacred Heart in 1989. Also during his tenure at SHU, Swanson served as the moderator for the Pioneer Student-Athlete Council from 1998-01 and was the annual coordinator of commencement exercises since 2000. Swanson and his wife, Marion, have two sons, Connor and Matthew.



#0 LIBBY UNDERWOOD

SOPHOMORE - GUARD

RYE, N.H. - PORTSMOUTH

>> UNDERWOOD'S CAREER HIGHS

MINUTES

Season 13 vs. VCU, 11/6/18
Career 15 vs. USC Upstate, 12/5/17

POINTS

Season 6 vs. VCU, 11/6/18
Career 8 vs. USC Upstate, 12/5/17

REBOUNDS

Season 2 at James Madison, 1/25/19
Career 3 at Northeastern, 1/21/18

FIELD GOALS

Season 3 vs. VCU, 11/6/18
Career 3 vs. VCU, 11/6/18

3-POINT FIELD GOALS

Season -
Career 1 (3x) last time vs. Upstate 12/5/17

FREE THROWS

Season 1 (2x) last time at NU, 1/6/18
Career 5 vs. USC Upstate, 12/5/17

ASSISTS

Season 1 (2x) last time at JMU, 1/25/19
Career 3 vs. USC Upstate, 12/5/17

STEALS

Season 1 at Old Dominion, 12/8/18
Career 1 (3x) last time at ODU, 12/8/18

BLOCKS

Season 1 vs. VCU, 11/6/18
Career 1 vs. VCU, 11/6/18

MISCELLANEOUS

Career in Double Figures 0
2018-19 in Double Figures 0

>> 2018-19 GAME-BY-GAME

Opp	Date	GS	Min	FG-A	3FG-A	FT-A	Reb.	A	TO	BLK	STL	PTS
VCU	11/6	14	3-4	0-1	0-0	0	1	1	0	1	6	
HOW	11/12	2	0-1	0-0	0-0	1	0	0	0	0	0	
at Loy	11/17	11	0-1	0-0	0-0	0	0	0	0	0	0	
at DC	11/24	6	0-1	0-1	0-0	0	0	0	0	0	0	
ECU	11/27											
				DNP - COACH'S DECISION								
at Hart	11/30	2	0-0	0-0	0-0	0	0	0	0	0	0	
at Fair	12/2											
				DNP - COACH'S DECISION								
UOFR	12/5	1	1-1	0-0	0-0	0	0	0	0	0	0	2
at ODU	12/8	10	0-1	0-0	1-2	0	0	2	0	1	1	
at NSU	12/21	5	0-0	0-0	0-0	0	0	2	0	0	0	
GW	12/28	3	0-0	0-0	0-0	0	0	0	0	0	0	
at Hof	1/4			DNP - COACH'S DECISION								
at NU	1/6	8	0-1	0-1	1-2	0	0	1	0	0	1	
UNCW	1/11											
				DNP - COACH'S DECISION								
COFC	1/13			DNP - COACH'S DECISION								
ELON	1/20			DNP - COACH'S DECISION								
at JMU	1/25	2	0-2	0-0	0-0	2	1	0	0	0	0	
at Tow	1/27			DNP - COACH'S DECISION								
DEL	2/1			DNP - COACH'S DECISION								
DREXEL	2/3	3	0-1	0-0	0-0	0	0	0	0	0	0	
at CofC	2/8			DNP - COACH'S DECISION								
at UNCW	2/10			DNP - COACH'S DECISION								
at Elon	2/17			DNP - COACH'S DECISION								
TOW	2/22			DNP - COACH'S DECISION								

>> UNDERWOOD'S CAREER STATISTICS

Season	GP	GS	Min/Avg	FG-FGA	Pct	3pt-Att	Pct	FT-FTA	Pct	Off	Def	Reb	Avg	PF	FO	A	TO	Blk	S	TP	Avg
2017-18	27	0	162/6.0	6-30	.200	3-15	.200	14-22	.636	2	14	16	0.6	10	0	8	21	0	2	29	1.1
2018-19	12	0	65/5.4	4-13	.308	0-3	.000	2-4	.500	3	0	3	0.3	1	0	2	6	1	1	10	0.8
CAREER	39	0	227/5.8	10-43	.233	3-18	.167	16-26	.615	5	14	19	0.5	11	0	10	27	1	3	39	1.0



#2 BIANCA BOGGS

SENIOR - GUARD

WALDORF, MD. - ST. MARY'S RYKEN

>> BOGGS' CAREER HIGHS

MINUTES

Season 48 at Charleston, 2/8/19
Career 48 at Charleston, 2/8/19

POINTS

Season 26 (2x) last time vs. GW, 12/28/18
Career 33 at St. Francis (Pa.), 12/2/17

REBOUNDS

Season 11 (2x) last time at JMU, 1/25/19
Career 11 (3x) last time at JMU, 1/25/19

FIELD GOALS

Season 10 (2x) last time vs. GW, 12/28/18
Career 12 at St. Francis (Pa.), 12/2/17

3-POINT FIELD GOALS

Season 4 (2x) last time vs. CofC, 1/13/19
Career 4 (4x) last time vs. CofC, 1/13/19

FREE THROWS

Season 7 (3x) last time vs. Tow., 2/22/19
Career 8 (2x) last time vs. UD, 2/23/18

ASSISTS

Season 8 vs. Towson, 2/22/19
Career 8 (2x) last time vs. Tow., 2/22/19

STEALS

Season 6 at Hartford, 11/30/18
Career 7 vs. Charleston, 1/26/18

BLOCKS

Season 3 vs. GW, 12/28/18
Career 4 vs. Hofstra, 1/28/18

MISCELLANEOUS

Career in Double Figures 63
2018-19 in Double Figures 21

>> 2018-19 GAME-BY-GAME

Opp	Date	GS	Min	FG-A	3FG-A	FTA	Reb.	A	TO	BLK	STL	PTS
VCU	11/6	*	34	6-16	1-3	2-3	6	4	3	1	5	16
HOW	11/12	*	35	10-22	1-5	5-5	9	7	4	0	1	26
at Loy	11/17	*	35	5-9	2-4	2-2	5	3	1	0	0	14
at DC	11/24	*	36	6-12	1-3	5-5	10	7	9	2	3	18
ECU	11/27	*	37	4-11	0-3	1-2	11	5	6	1	1	9
at Hart	11/30	*	39	3-15	1-5	5-6	6	2	4	0	6	12
at Fair	12/2	*	37	8-12	2-4	4-8	5	2	7	0	3	22
UOFR	12/5	*	32	2-7	0-0	1-2	1	6	3	2	2	8
at ODU	12/8	*	24	7-15	0-3	3-3	3	2	2	0	3	17
at NSU	12/21	*	33	4-10	0-2	2-5	8	4	6	1	4	10
GW	12/28	*	34	10-16	3-5	3-3	10	3	3	3	2	26
at Hof	1/4	*	39	7-14	1-4	7-7	10	3	6	1	0	22
at NU	1/6	*	25	6-15	4-7	5-6	6	4	2	0	3	21
UNCW	1/11	*	36	8-16	2-5	7-9	6	2	2	2	2	25
COFC	1/13	*	39	6-16	4-8	2-8	8	4	5	0	2	18
ELON	1/20	*	27	4-8	1-2	4-6	3	3	1	0	0	13
at JMU	1/25	*	33	2-18	0-3	4-4	11	3	3	9	1	8
at Tow	1/27	*	33	7-17	3-6	5-11	7	3	4	0	3	22
DEL	2/1	*	37	2-9	1-2	6-8	8	5	6	1	1	11
DREXEL	2/3	*	39	6-10	1-2	4-5	9	3	3	1	1	17
at CoFC	2/8	*	48	9-19	0-3	5-8	6	4	9	2	5	23
at UNCW	2/10*		38	7-15	1-5	1-3	10	3	5	1	5	16
at Elon	2/17	*	39	5-11	1-6	2-2	9	4	5	2	2	13
TOW	2/22	*	33	5-12	1-2	7-9	3	8	4	3	1	18

>> BOGGS' CAREER STATISTICS

Season	GP	GS	Min/Avg	FG-FGA	Pct	3pt-Att	Pct	FT-FTA	Pct	Off	Def	Reb	Avg	PF	FO	A	TO	Blk	S	TP	Avg
2015-16	30	24	802/26.7	68-233	.292	17-56	.304	70-102	.686	38	57	95	3.2	81	5	45	55	10	56	223	7.4
2016-17	31	26	734/23.7	82-214	.383	22-74	.297	60-76	.789	44	65	109	3.5	60	0	60	76	17	54	246	7.9
2017-18	30	30	907/30.2	156-373	.418	41-129	.318	103-139	.741	46	91	137	4.6	85	1	88	111	24	65	456	15.2
2018-19	24	24	845/35.2	139-328	.424	32-97	.330	94-132	.712	33	137	170	7.1	58	3	94	102	21	58	404	16.8
CAREER	115	104	3288/28.6	445-1148	.388	112-356	.314	327-449	.728	161	350	511	4.4	284	9	287	344	72	233	1329	11.6



#3 ASHLEY TAYLOR

JUNIOR - GUARD

CHARLOTTESVILLE, VA. - ST. ANNE'S-BELFIELD

>> TAYLOR'S CAREER HIGHS

MINUTES			FREE THROWS		
Season	6	vs. GW, 12/28/18	Season	1	vs. GW, 12/28/18
Career	9	vs. USC Upstate, 12/5/17	Career	1	vs. GW, 12/28/18
POINTS			ASSISTS		
Season	1	vs. GW, 12/28/18	Season	-	-
Career	3	vs. USC Upstate, 12/5/17	Career	1	(4x) last time at CofC, 12/29/17
REBOUNDS			STEALS		
Season	-	-	Season	-	-
Career	2	vs. Loyola, 11/25/17	Career	1	vs. Davidson, 11/27/17
FIELD GOALS			BLOCKS		
Season	-	-	Season	-	-
Career	1	(2x) last time at Elon, 3/1/18	Career	-	-
3-POINT FIELD GOALS			MISCELLANEOUS		
Season	-	-	Career in Double Figures	0	
Career	1	vs. USC Upstate, 12/5/17	2018-19 in Double Figures	0	

>> TAYLOR'S CAREER STATISTICS

Season	GP	GS	Min/Avg	FG-FGA	Pct	3pt-Att	Pct	FT-FTA	Pct	Off	Def	Reb	Avg	PF	FO	A	TO	Blk	S	TP	Avg
2016-17	7	0	22/3.1	0-6	.000	0-4	.000	0-0	.000	1	2	3	0.4	0	0	2	1	0	0	0	0.0
2017-18	13	0	32/2.5	2-9	.222	1-3	.333	0-0	.000	0	7	7	0.5	1	0	2	4	0	1	5	0.4
2018-19	4	0	11/2.8	0-4	.000	0-3	.000	1-2	.500	0	0	0	0.0	0	0	0	0	0	0	1	0.3
CAREER	25	0	65/2.7	2-20	.105	1-10	.100	1-2	.500	1	9	10	0.4	1	0	4	5	0	1	6	0.3

>> 2018-19 GAME-BY-GAME

Opp	Date	GS	Min	FG-A	3FG-A	FT-A	Reb.	A	TO	BLK	STL	P	L	T
VCU	11/6													
HOW	11/12													
at Loy	11/17	1	0-0	0-0	0-0	0	0	0	0	0	0	0	0	0
at DC	11/24													
ECU	11/27													
at Hart	11/30													
at Fair	12/2													
UOFR	12/5													
at ODU	12/8	1	0-1	0-1	0-0	0	0	0	0	0	0	0	0	0
at NSU	12/21													
GW	12/28	6	0-3	0-2	1-2	0	0	0	0	0	0	0	1	
at Hof	1/4													
at NU	1/6													
UNCW	1/11													
COFC	1/13													
ELON	1/20													
at JMU	1/25	3	0-0	0-0	0-0	0	0	0	0	0	0	0	0	0
at Tow	1/27													
DEL	2/1													
DREXEL	2/3													
at CofC	2/8													
at UNCW	2/10													
at Elon	2/17													
TOW	2/22													



#5 MISHA JONES

SENIOR - GUARD/FORWARD

MANASSAS PARK, VA. - BATTLEFIELD

>> JONES' CAREER HIGHS

MINUTES			FREE THROWS		
Season	25	at Towson, 1/27/19	Season	6	at Towson, 1/27/19
Career	27	vs. Delaware, 2/23/18	Career	6	at Towson, 1/27/19
POINTS			ASSISTS		
Season	9	(2x) last vs. UNCW, 1/11/19	Season	4	at Old Dominion, 12/8/18
Career	9	(2x) last vs. UNCW, 1/11/19	Career	4	(3x) last time at ODU, 12/8/18
REBOUNDS			STEALS		
Season	8	at Towson, 1/27/19	Season	2	at Hofstra, 1/4/19
Career	8	at Towson, 1/27/19	Career	2	(2x) last time at Hofstra, 1/4/19
FIELD GOALS			BLOCKS		
Season	3	(2x) last vs. UNCW, 1/11/19	Season	1	(5x) last time at CofC, 2/8/19
Career	3	(2x) last vs. UNCW, 1/11/19	Career	1	(6x) last time at CofC, 2/8/19
3-POINT FIELD GOALS			MISCELLANEOUS		
Season	3	vs. UNCW, 1/11/19	Career in Double Figures	0	
Career	3	vs. UNCW, 1/11/19	2018-19 in Double Figures	0	

>> 2018-19 GAME-BY-GAME

Opp	Date	GS	Min	FG-A	3FG-A	FT-A	Reb.	A	TO	BLK	STL	P	L	T
VCU	11/6	4	1-1	1-1	1-2	4	0	0	0	0	4			
HOW	11/12	14	3-5	2-4	1-1	3	2	2	1	0	9			
at Loy	11/17	13	2-4	0-2	1-2	2	1	0	0	0	5			
at DC	11/24	11	1-2	1-2	0-0	1	3	1	1	0	3			
ECU	11/27	9	0-3	0-3	0-0	2	0	0	0	0	0			
at Hart	11/30	12	1-2	1-1	0-0	4	1	0	0	0	3			
at Fair	12/2	8	0-1	0-1	0-0	1	0	0	0	0	0			
UOFR	12/5	6	0-0	0-0	0-0	1	0	1	0	0	0			
at ODU	12/8	13	2-5	0-1	0-0	4	4	1	0	0	4			
at NSU	12/21	8	0-1	0-1	0-0	0	0	1	0	1	0			
GW	12/28 *	12	1-2	0-0	2-2	1	0	1	0	0	4			
at Hof	1/4 *	6	1-1	1-1	0-0	1	1	0	0	0	3			
at NU	1/6 *	20	2-6	1-3	1-2	3	2	0	0	1	6			
UNCW	1/11	24	3-5	3-5	0-0	2	3	3	1	0	9			
COFC	1/13	19	2-5	2-4	0-0	2	2	1	0	0	6			
ELON	1/20	15	2-3	2-2	2-2	2	2	0	2	0	8			
at JMU	1/25	22	2-3	2-3	0-0	3	0	0	0	0	6			
at Tow	1/27	22	1-5	0-4	6-6	8	2	2	0	0	8			
DEL	2/1	20	1-2	1-2	0-0	2	0	3	0	0	3			
DREXEL	2/3	10	0-0	0-0	0-0	1	2	0	1	0	0			
at CofC	2/8	15	1-4	0-3	0-0	1	1	1	1	0	2			
at UNCW	2/10	5	0-1	0-1	0-0	0	0	0	0	0	0			
at Elon	2/17	4	0-0	0-0	0-0	1	0	0	0	0	0			
TOW	2/22	4	0-0	0-0	0-0	0	0	0	0	0	0			

>> JONES' CAREER STATISTICS

Season	GP	GS	Min/Avg	FG-FGA	Pct	3pt-Att	Pct	FT-FTA	Pct	Off	Def	Reb	Avg	PF	FO	A	TO	Blk	S	TP	Avg
2015-16	27	0	180/6.7	12-36	.333	5-20	.250	7-10	.700	1	16	17	0.6	15	0	8	9	0	4	36	1.3
2016-17																					
2017-18	28	0	201/7.2	13-41	.317	7-26	.269	10-11	.909	6	26	32	1.1	29	0	15	17	1	7	43	1.5
2018-19	24	3	298/12.8	26-61	.426	17-44	.386	14-16	.875	13	32	45	1.9	43	0	26	17	5	3	83	3.5
CAREER	79	3	679/8.7	51-138	.370	29-90	.322	31-37	.838	20	74	94	1.2	87	0	49	43	6	14	162	2.1



#10 EVA HODGSON

FRESHMAN - GUARD

RINDGE, N.H. - NEW HAMPTON SCHOOL

>> HODGSON'S CAREER HIGHS

MINUTES

Season 46 at Charleston, 2/8/19
 Career 46 at Charleston, 2/8/19

POINTS

Season 24 at UNCW, 2/10/19
 Career 24 at UNCW, 2/10/19

REBOUNDS

Season 6 (2x) last time vs. Drexel, 2/3/19
 Career 6 (2x) last time vs. Drexel, 2/3/19

FIELD GOALS

Season 9 at UNCW, 2/10/19
 Career 9 at UNCW, 2/10/19

3-POINT FIELD GOALS

Season 4 at UNCW, 2/10/19
 Career 4 at UNCW, 2/10/19

FREE THROWS

Season 8 (2x) last time vs. Drexel, 2/3/19
 Career 8 (2x) last time vs. Drexel, 2/3/19

ASSISTS

Season 6 (3x) last time vs. Elon, 1/20/19
 Career 6 (3x) last time vs. Elon, 1/20/19

STEALS

Season 4 at Fairfield, 12/2/18
 Career 4 at Fairfield, 12/2/18

BLOCKS

Season 3 vs. Drexel, 2/3/19
 Career 3 vs. Drexel, 2/3/19

MISCELLANEOUS

Career in Double Figures 13
 2018-19 in Double Figures 13

> 2018-19 GAME-BY-GAME

Opp	Date	GS	Min	FG-A	3FG-A	FT-A	Reb.	A	TO	BLK	STL	PTS
VCU	11/6	*	28	4-8	0-2	0-0	0	3	2	0	2	8
HOW	11/12	*	35	2-6	1-3	1-2	5	4	4	0	2	6
at Loy	11/17	*	30	2-7	0-1	1-1	2	5	2	1	1	5
at DC	11/24	*	30	0-4	0-1	0-0	3	2	4	0	0	0
ECU	11/27	*	26	4-4	2-2	3-4	1	0	2	1	0	13
at Hart	11/30	*	34	4-12	1-5	5-7	2	2	4	0	3	14
at Fair	12/2	*	32	0-4	0-2	3-4	5	4	4	0	4	3
UOFR	12/5	*	32	5-11	1-4	4-4	4	6	3	1	2	15
at ODU	12/8	*	22	2-5	0-2	0-2	1	3	1	0	0	4
at NSU	12/21	*	14	2-3	1-1	0-0	1	2	2	0	0	5
GW	12/28	*	32	4-7	2-3	1-1	4	6	2	1	0	11
at Hof	1/4	*	39	6-14	1-3	5-6	1	2	3	1	2	18
at NU	1/6	*	34	4-4	3-3	5-6	4	2	2	0	2	16
UNCW	1/11	*	27	2-6	2-5	0-0	0	1	2	1	2	6
COFC	1/13	*	17	1-4	0-1	0-0	1	1	5	1	0	2
ELON	1/20	*	37	2-7	0-2	0-0	4	6	2	0	2	4
at JMU	1/25	*	27	2-6	1-4	8-8	4	1	4	0	1	13
at Tow	1/27	*	39	4-10	0-1	5-6	6	5	1	1	0	13
DEL	2/1	*	38	3-7	1-1	4-4	1	4	1	0	2	11
DREXEL	2/3	*	40	2-5	0-1	8-8	6	4	2	3	3	12
at CofC	2/8	*	46	5-9	2-2	1-2	2	2	2	0	3	13
at UNCW	2/10*	*	38	7-15	1-5	2-2	5	2	6	0	0	24
at Elon	2/17	*	37	5-9	2-6	2-2	3	1	3	0	2	14
TOW	2/22	*	36	2-7	2-6	0-0	5	3	3	0	1	6

>> HODGSON'S CAREER STATISTICS

Season	GP	GS	Min/Avg	FG-FGA	Pct	3pt-Att	Pct	FT-FTA	Pct	Off	Def	Reb	Avg	PF	FO	A	TO	Blk	S	TP	Avg
2018-19	24	24	769/32.0	76-174	.437	26-67	.388	58-70	.829	23	46	69	2.9	64	1	71	65	11	33	236	9.8
CAREER	24	24	769/32.0	76-174	.437	26-67	.388	58-70	.829	23	46	68	2.9	64	1	71	65	11	33	236	9.8



#11 NYLA POLLARD

SOPHOMORE - GUARD

VIRGINIA BEACH, VA. - PRINCESS ANNE

>> POLLARD'S CAREER HIGHS

MINUTES

Season 38 at Hofstra, 1/4/19
 Career 38 at Hofstra, 1/4/19

POINTS

Season 10 vs. East Carolina, 11/27/18
 Career 14 vs. USC Upstate, 12/5/17

REBOUNDS

Season 12 vs. East Carolina, 11/27/18
 Career 12 vs. East Carolina, 11/27/18

FIELD GOALS

Season 4 (2x) last time vs. CofC, 1/19/13
 Career 6 vs. USC Upstate, 12/5/17

3-POINT FIELD GOALS

Season 2 (2x) last vs. UNCW, 1/11/19
 Career 2 (6x) last vs. UNCW, 1/11/19

FREE THROWS

Season 6 vs. East Carolina, 11/27/18
 Career 6 vs. East Carolina, 11/27/18

ASSISTS

Season 6 vs. UNCW, 1/11/19
 Career 6 vs. UNCW, 1/11/19

STEALS

Season 3 (2x) last time vs. CofC, 2/8/19
 Career 4 vs. Davidson, 11/27/17

BLOCKS

Season 1 (3x) last time vs. Elon, 1/20/19
 Career 1 (7x) last time vs. Elon, 1/20/19

MISCELLANEOUS

Career in Double Figures 4
 2018-19 in Double Figures 1

>> 2018-19 GAME-BY-GAME

Opp	Date	GS	Min	FG-A	3FG-A	FT-A	Reb.	A	TO	BLK	STL	PTS
VCU	11/6		19	2-4	1-1	0-1	1	0	0	0	1	5
HOW	11/12		34	3-7	2-3	0-0	3	2	2	0	2	8
at Loy	11/17		23	4-6	1-2	0-0	2	4	1	0	1	9
at DC	11/24		25	1-4	0-2	0-1	1	1	2	0	0	2
ECU	11/27	*	35	2-9	0-3	6-8	12	2	4	1	0	10
at Hart	11/30	*	25	0-6	0-3	0-0	3	2	2	0	0	0
at Fair	12/2	*	27	0-3	0-0	2-4	3	3	3	0	2	2
UOFR	12/5	*	35	2-5	1-4	0-0	2	2	3	0	3	5
at ODU	12/8	*	20	0-2	0-1	2-2	0	4	2	0	2	2
at NSU	12/21	*	37	2-6	0-2	2-2	2	4	0	0	1	6
GW	12/28	*	33	1-7	0-2	0-0	1	3	2	0	1	2
at Hof	1/4	*	38	1-4	1-1	1-2	7	3	1	0	2	4
at NU	1/6	*	13	0-2	0-1	0-0	0	0	0	0	0	0
UNCW	1/11	*	36	2-4	2-3	3-4	7	6	3	0	0	9
COFC	1/13	*	37	4-9	0-3	1-2	2	4	0	1	1	9
ELON	1/20	*	33	1-6	0-3	0-0	1	2	3	1	0	2
at JMU	1/25	*	25	0-3	0-1	2-2	1	1	2	0	0	2
at Tow	1/27	*	34	2-3	1-1	3-4	2	4	2	0	1	8
DEL	2/1	*	22	1-6	1-2	0-0	1	4	1	0	2	3
DREXEL	2/3	*	21	2-6	0-2	1-2	4	1	2	0	0	5
at CofC	2/8	*	31	0-3	0-3	0-0	4	3	4	0	3	0
at UNCW	2/10*	*	16	0-3	0-1	0-0	2	2	1	0	0	0
at Elon	2/17	*	28	1-6	1-4	1-2	3	1	2	0	1	4
TOW	2/22	*	28	2-2	0-0	2-2	4	4	0	0	2	6

>> POLLARD'S CAREER STATISTICS

Season	GP	GS	Min/Avg	FG-FGA	Pct	3pt-Att	Pct	FT-FTA	Pct	Off	Def	Reb	Avg	PF	FO	A	TO	Blk	S	TP	Avg
2017-18	30	27	658/21.9	44-121	.364	14-48	.292	20-27	.741	22	31	53	1.8	71	3	46	40	4	15	122	4.1
2018-19	24	20	676/28.2	33-116	.284	11-48	.229	26-38	.684	26	42	68	2.8	50	2	63	42	3	25	103	4.3
CAREER	54	47	1334/24.7	77-237	.325	25-96	.260	46-65	.708	48	73	121	2.2	121	5	109	82	7	40	225	4.2



#12 HARPER BIRDSONG

SOPHOMORE - GUARD

SUFFOLK, VA. - NANSEMOND SUFFOLK
(George Washington)

>> BIRDSONG'S CAREER HIGHS

MINUTES

Season	30	at Old Dominion, 12/8/18
Career	30	at Old Dominion, 12/8/18

POINTS

Season	18	at Old Dominion, 12/8/18
Career	18	at Old Dominion, 12/8/18

REBOUNDS

Season	5	(3x) last time vs. CofC, 1/13/19
Career	5	(3x) last time vs. CofC, 1/13/19

FIELD GOALS

Season	6	(3x) last time at NU, 1/6/19
Career	6	(3x) last time at NU, 1/6/19

3-POINT FIELD GOALS

Season	4	vs. GW, 12/28/18
Career	4	vs. GW, 12/28/18

FREE THROWS

Season	4	(2x) last vs. UNCW, 1/11/19
Career	4	(2x) last vs. UNCW, 1/11/19

ASSISTS

Season	4	(2x) last time at UNCW, 2/10/19
Career	4	(2x) last time at UNCW, 2/10/19

STEALS

Season	3	vs. GW, 12/28/18
Career	3	vs. GW, 12/28/18

BLOCKS

Season	2	vs. UNCW, 1/11/19
Career	2	vs. UNCW, 1/11/19

MISCELLANEOUS

Career in Double Figures	13
2018-19 in Double Figures	13

>> 2018-19 GAME-BY-GAME

Opp	Date	GS	Min	FG-A	3FG-A	FT-A	Reb.	A	TO	BLK	STLPTS
VCU	11/6	*	12	0-4	0-2	0-0	0	0	4	0	0
HOW	11/12	*	16	5-10	1-4	1-2	2	1	1	1	12
at Loy	11/17	*	14	3-3	3-3	0-2	0	0	2	0	9
at DC	11/24	*	20	4-10	2-6	0-0	0	2	1	0	10
ECU	11/27		19	3-9	1-3	3-3	1	1	3	1	10
at Hart	11/30		19	2-5	2-5	2-5	1	1	2	0	8
at Fair	12/2		25	3-8	3-5	2-2	0	0	1	0	11
UOFR	12/5		18	5-7	3-5	0-0	2	2	1	0	13
at ODU	12/8		30	6-18	2-8	4-4	2	4	3	0	18
at NSU	12/21		28	5-11	3-7	1-1	5	1	4	0	14
GW	12/28		23	6-10	4-6	0-0	2	2	1	0	3
at Hof	1/4		23	2-7	2-5	3-4	1	0	22	0	9
at NU	1/6		29	6-15	2-7	2-4	5	2	1	0	16
UNCW	1/11		21	0-10	0-5	4-4	2	1	0	2	4
COFC	1/13		23	3-11	2-5	0-0	4	0	2	0	8
ELON	1/20		17	5-11	3-6	0-0	3	2	3	1	0
at JMU	1/25		14	5-9	2-5	0-0	0	0	1	0	12
at Tow	1/27		3	0-1	0-1	0-0	0	0	1	0	0
DEL	2/1		23	5-11	0-4	2-2	1	1	1	0	12
DREXEL	2/3		27	5-8	3-6	2-2	3	0	1	1	15
at CofC	2/8		24	3-9	2-4	0-0	3	0	1	0	8
at UNCW	2/10		29	0-10	0-4	0-0	4	4	2	0	0
at Elon	2/17		17	4-7	3-4	2-2	1	2	0	0	2
TOW	2/22		14	2-7	1-5	2-3	1	0	1	0	7

>> BIRDSONG'S CAREER STATISTICS

Season	GP	GS	Min/Avg	FG-FGA	Pct	3pt-Att	Pct	FT-FTA	Pct	Off	Def	Reb	Avg	PF	FO	A	TO	Blk	S	TP	Avg
2016-17	8	0	39/4.9	4-13	.308	2-8	.250	1-1	1.000	0	2	2	0.3	2	0	2	1	0	1	11	1.4
2017-18																					
2018-19	24	4	490/20.4	82-212	.387	44-115	.383	30-40	.750	14	30	44	1.8	43	1	26	38	6	17	238	9.9
CAREER	32	4	59/16.5	86-225	.382	46-123	.374	31-41	.756	14	32	46	1.4	45	1	28	40	6	18	249	7.8

>> 2018-19 GAME-BY-GAME

Opp	Date	GS	Min	FG-A	3FG-A	FT-A	Reb.	A	TO	BLK	STLPTS
VCU	11/6		16	1-5	1-4	1-2	4	1	0	1	0
HOW	11/12		13	5-9	4-7	0-2	2	0	0	2	0
at Loy	11/17		18	2-2	1-1	0-0	5	3	1	0	2
at DC	11/24		16	3-5	3-4	0-0	3	0	0	0	9
ECU	11/27		15	2-6	2-4	0-0	4	2	0	0	6
at Hart	11/30		22	0-6	0-4	2-2	1	0	1	1	2
at Fair	12/2		11	0-3	0-2	2-2	4	0	1	0	2
UOFR	12/5		8	1-2	1-2	0-0	1	0	1	0	3
at ODU	12/8		21	1-5	0-3	0-0	5	1	0	1	2
at NSU	12/21		21	3-7	1-5	0-2	1	2	0	0	7
GW	12/28		14	1-5	1-4	0-0	2	0	0	2	0
at Hof	1/4		13	0-0	0-0	0-0	1	1	0	0	0
at NU	1/6		18	1-5	0-4	1-1	1	1	2	0	3
UNCW	1/11	*	12	0-4	0-4	0-0	0	0	0	0	0
COFC	1/13	*	7	0-1	0-0	0-0	0	0	0	1	0
ELON	1/20		10	3-6	3-5	0-0	0	0	0	1	0
at JMU	1/25		13	0-2	0-2	0-0	3	0	0	0	1
at Tow	1/27		22	5-8	3-5	0-0	4	0	1	0	13
DEL	2/1		9	1-2	1-2	0-0	2	0	1	1	0
DREXEL	2/3		15	1-6	1-6	0-0	3	0	1	2	0
at CofC	2/8	*	6	0-0	0-0	0-0	0	0	2	0	0
at UNCW	2/10		14	2-5	2-5	0-0	3	0	0	0	6
at Elon	2/17		19	2-4	2-4	0-0	1	1	1	0	6
TOW	2/22		11	2-5	1-3	1-1	1	0	0	0	6



#15 EMMA KRAUSE

FRESHMAN - FORWARD

PLANTATION, FLA. - CARDINAL GIBBONS

>> KRAUSE'S CAREER HIGHS

MINUTES

Season	22	(2x) last time at TU, 1/27/19
Career	22	(2x) last time at TU, 1/27/19

POINTS

Season	14	vs. Howard, 11/12/18
Career	14	vs. Howard, 11/12/18

REBOUNDS

Season	5	(2x) last time at ODU, 12/8/18
Career	5	(2x) last time at ODU, 12/8/18

FIELD GOALS

Season	5	(2x) last time at TU, 1/27/19
Career	5	(2x) last time at TU, 1/27/19

3-POINT FIELD GOALS

Season	4	vs. Howard, 11/12/18
Career	4	vs. Howard, 11/12/18

FREE THROWS

Season	2	at Fairfield, 12/2/18
Career	2	at Fairfield, 12/2/18

ASSISTS

Season	3	at Loyola, 11/14/18
Career	3	at Loyola, 11/14/18

STEALS

Season	2	at Loyola, 11/14/18
Career	2	at Loyola, 11/14/18

BLOCKS

Season	2	(3x) last time vs. Drexel, 2/3/19
Career	2	(3x) last time vs. Drexel, 2/3/19

MISCELLANEOUS

Career in Double Figures	2
2018-19 in Double Figures	2

>> KRAUSE'S CAREER STATISTICS

Season	GP	GS	Min/Avg	FG-FGA	Pct	3pt-Att	Pct	FT-FTA	Pct	Off	Def	Reb	Avg	PF	FO	A	TO	Blk	S	TP	Avg
2018-19	24	3	345/14.4	36-103	.350	27-80	.338	7-12	.583	13	37	50	2.1	41	1	12	12	12	6	106	4.4
CAREER	24	3	345/14.4	36-103	.350	27-80	.338	7-12	.583	13	37	50	2.1	41	1	12	12	12	6	106	4.4



#20 CHANDLER SMITH

SENIOR - CENTER

PORT TOBACCO, MD. - ST. MARY'S RYKEN

>> SMITH'S CAREER HIGHS

MINUTES

Season	20	at UNCW, 2/10/19
Career	20	at UNCW, 2/10/19

POINTS

Season	2	at UNCW, 2/10/19
Career	4	(4x) last time at SFU 12/2/17

REBOUNDS

Season	6	at UNCW, 2/10/19
Career	6	at UNCW, 2/10/19

FIELD GOALS

Season	1	at UNCW, 2/10/19
Career	2	(3x) last time at SFU, 12/2/17

3-POINT FIELD GOALS

Season	-	
Career	-	

FREE THROWS

Season	1	vs. Howard, 11/12/18
Career	4	vs. Hofstra, 2/7/17

ASSISTS

Season	1	vs. Richmond, 12/5/18
Career	1	(3x) last time vs. UofR, 12/5/18

STEALS

Season	1	at Elon, 2/19/19
Career	2	(2x) last time vs. Mount St. Mary's, 12/18/16

BLOCKS

Season	1	(3x) last time at JMU 1/25/19
Career	3	vs. Mount St. Mary's, 12/18/16

MISCELLANEOUS

Career in Double Figures	0
2017-18 in Double Figures	0

>> SMITH'S CAREER STATISTICS

Season	GP	GS	Min/Avg	FG-FGA	Pct	3pt-Att	Pct	FT-FTA	Pct	Off	Def	Reb	Avg	PF	FO	A	TO	Blk	S	TP	Avg
2015-16	19	0	97/5.1	3-12	.250	0-0	.000	0-6	.000	2	10	12	0.6	13	0	0	5	4	3	6	0.3
2016-17	13	0	77/5.9	6-21	.286	0-0	.000	7-8	.875	2	22	24	1.8	16	1	1	7	11	3	19	1.5
2017-18	21	0	86/4.1	5-17	.294	0-0	.000	0-0	.000	4	8	12	0.6	15	0	3	8	9	1	10	0.5
2018-19	12	1	61/5.1	1-3	.333	0-0	.000	1-4	.250	3	12	15	1.3	8	0	1	7	4	1	3	0.3
CAREER	65	1	321/4.9	15-53	.283	0-0	.000	8-18	.444	11	52	63	1.0	52	1	5	27	28	8	38	0.6



#21 BAILEY EICHNER

SOPHOMORE - GUARD/FORWARD

CUDAHY, WISC. - CUDAHY

>> EICHNER'S CAREER HIGHS

MINUTES

Season	13	vs. GW, 12/28/18
Career	13	vs. GW, 12/28/18

POINTS

Season	2	at Old Dominion, 12/8/18
Career	4	vs. James Madison, 2/2/18

REBOUNDS

Season	6	at Old Dominion, 12/8/18
Career	6	at Old Dominion, 12/8/18

FIELD GOALS

Season	1	at Old Dominion, 12/8/18
Career	1	(3x) last time at ODU, 12/8/18

3-POINT FIELD GOALS

Season	-	
Career	-	

FREE THROWS

Season	1	vs. VCU, 11/6/18
Career	2	vs. James Madison, 2/2/18

ASSISTS

Season	1	(3x) last time vs. Tow., 2/22/19
Career	2	at Hofstra, 1/19/18

STEALS

Season	2	at Old Dominion, 12/8/18
Career	2	at Old Dominion, 12/8/18

BLOCKS

Season	1	vs. GW, 12/28/18
Career	1	(2x) last time vs. GW, 12/28/18

MISCELLANEOUS

Career in Double Figures	0
2017-18 in Double Figures	0

>> 2018-19 GAME-BY-GAME

Opp	Date	GS	Min	FG-A	3FG-A	FT-A	Reb.	A	TO	BLK	STLPTS
VCU	11/6	8	0-0	0-0	0-0	2	0	0	0	0	0
HOW	11/12	4	0-0	0-0	1-2	2	0	1	1	0	1
at Loy	11/17	4	0-1	0-0	0-0	0	0	0	1	0	0
at DC	11/24										
ECU	11/27	8	0-0	0-0	0-0	3	0	2	0	0	0
at Hart	11/30										
at Fair	12/2										
UOFR	12/5	5	0-0	0-0	0-0	1	1	0	0	0	0
at ODU	12/8										
at NSU	12/21	2	0-0	0-0	0-0	0	0	0	0	0	0
GW	12/28	1	0-0	0-0	0-0	0	0	1	0	0	0
at Hof	1/4										
at NU	1/6										
UNCW	1/11										
COFC	1/13										
ELON	1/20										
at JMU	1/25	2	0-0	0-0	0-0	0	0	0	1	0	0
at Tow	1/27	1	0-0	0-0	0-0	0	0	1	0	0	0
DEL	2/1										
DREXEL	2/3										
at CofC	2/8	1	0-0	0-0	0-0	1	0	1	0	0	0
at UNCW	2/10*	20	1-2	0-0	0-2	6	0	0	0	0	2
at Elon	2/17	6	0-0	0-0	0-0	0	0	1	0	1	0
TOW	2/22										

>> 2018-19 GAME-BY-GAME

Opp	Date	GS	Min	FG-A	3FG-A	FT-A	Reb.	A	TO	BLK	STLPTS
VCU	11/6	11	0-2	0-1	1-2	1	0	1	0	0	1
HOW	11/12	1	0-0	0-0	0-0	0	0	1	0	0	0
at Loy	11/17	1	0-0	0-0	0-0	0	0	0	0	0	0
at DC	11/24										
ECU	11/26										
at Hart	11/30										
at Fair	12/2										
UOFR	12/5										
at ODU	12/8	11	1-2	0-0	0-0	6	0	0	0	0	2
at NSU	12/21	7	0-2	0-1	0-0	2	0	0	0	1	0
GW	12/28	13	0-1	0-1	0-0	2	1	0	1	0	0
at Hof	1/4	8	0-0	0-0	0-0	1	1	0	0	0	0
at NU	1/6	6	0-1	0-0	0-0	1	0	0	0	0	0
UNCW	1/11	3	0-0	0-0	0-0	0	0	0	0	0	0
COFC	1/13										
ELON	1/20	1	0-0	0-0	0-0	0	0	1	0	0	0
at JMU	1/25	9	0-1	0-0	0-0	2	0	0	0	0	0
at Tow	1/27	2	0-0	0-0	0-0	0	0	0	1	0	0
DEL	2/1										
DREXEL	2/3										
at CofC	2/8										
at UNCW	2/10										
at Elon	2/17	3	0-0	0-0	0-0	0	0	1	0	0	0
TOW	2/22	3	0-0	0-0	0-0	0	1	0	0	0	0

>> EICHNER'S CAREER STATISTICS

Season	GP	GS	Min/Avg	FG-FGA	Pct	3pt-Att	Pct	FT-FTA	Pct	Off	Def	Reb	Avg	PF	FO	A	TO	Blk	S	TP	Avg
2017-18	16	0	46/2.9	2-6	.333	0-2	.000	4-8	.500	6	9	15	0.9	14	0	2	7	2	1	8	0.5
2018-19	14	0	78/5.6	1-9	.111	0-3	.000	1-2	.500	4	11	15	1.1	8	0	3	5	1	3	3	0.2
CAREER	30	0	124/4.1	3-15	.200	0-5	.000	5-10	.500	10	20	30	1.0	22	0	5	12	3	4	11	0.4



#25 GABBY ROGERS

SOPHOMORE - CENTER

DALLAS, TEXAS - BISHOP LYNCH

>> ROGERS' CAREER HIGHS

MINUTES

Season	31	(2x) last time vs. Tow., 2/22/19
Career	31	(2x) last time vs. Tow., 2/22/19

POINTS

Season	17	vs. Towson, 2/22/19
Career	17	vs. Towson, 2/22/19

REBOUNDS

Season	12	at Charleston, 2/8/19
Career	12	at Charleston, 2/8/19

FIELD GOALS

Season	8	vs. Towson, 2/22/19
Career	8	vs. Towson, 2/22/19

3-POINT FIELD GOALS

Season	-	
Career	-	

FREE THROWS

Season	6	at Charleston, 2/8/19
Career	6	at Charleston, 2/8/19

ASSISTS

Season	1	(6x) last time vs. Tow., 2/22/19
Career	1	(12x) last time vs. Tow., 2/22/19

STEALS

Season	3	(2x) last time at Hofstra, 1/4/19
Career	3	(3x) last time at Hofstra, 1/4/19

BLOCKS

Season	2	vs. Elon, 1/20/19
Career	2	(3x) last time vs. Elon, 1/20/19

MISCELLANEOUS

Career in Double Figures	3
2018-19 in Double Figures	3

>> 2018-19 GAME-BY-GAME

Opp	Date	GS	Min	FG-A	3FG-A	FT-A	Reb.	A	TO	BLK	STL	P	PTS
VCU	11/6	*	18	1-2	0-0	2-2	1	0	2	0	0	4	2
HOW	11/12	*	19	1-2	0-0	0-0	3	0	2	1	0	2	2
at Loy	11/17	*	16	4-6	0-0	0-0	2	1	0	0	0	8	8
at DC	11/24	*	27	4-8	0-1	2-2	2	0	1	0	1	10	10
ECU	11/27	*	15	0-1	0-0	0-0	2	0	3	0	1	0	0
at Hart	11/30	*	18	1-2	0-0	0-0	1	0	0	1	3	2	2
at Fair	12/2	*	30	4-7	0-0	0-0	5	1	0	0	1	8	8
UOFR	12/5	*	29	2-7	0-0	1-2	5	0	1	0	0	5	5
at ODU	12/8	*	11	3-5	0-0	0-0	2	0	0	0	0	6	6
at NSU	12/21	*	10	1-3	0-0	0-0	3	0	0	0	0	2	2
GW	12/28	*	12	1-2	0-0	0-0	3	0	0	0	1	2	2
at Hof	1/4	*	21	2-3	0-0	0-0	2	1	0	0	3	4	4
at NU	1/6	*	17	0-2	0-0	2-2	1	1	1	0	0	2	2
UNCW	1/11	*	11	0-1	0-0	0-0	3	0	2	1	1	0	0
COFC	1/13	*	21	1-5	0-0	1-2	5	1	1	1	2	3	3
ELON	1/20	*	23	2-3	0-0	0-0	4	0	1	0	2	5	5
at JMU	1/25	*	15	1-1	0-0	0-0	1	0	1	0	0	2	2
at Tow	1/27	*	15	2-5	0-0	0-0	2	0	2	0	0	4	4
DEL	2/1	*	12	1-5	0-0	0-0	2	0	0	0	1	2	2
DREXEL	2/3	*	6	0-1	0-0	0-0	0	0	1	0	0	0	0
at CofC	2/8	*	31	4-9	0-0	6-6	12	0	0	1	0	14	14
at UNCW	2/10	*											
DNP - SUSPENSION													
at Elon	2/17	*	11	1-1	0-0	0-0	1	0	2	1	1	2	2
TOW	2/22	*	31	8-9	0-0	1-1	5	1	2	0	0	17	17

>> ROGERS' CAREER STATISTICS

Season	GP	GS	Min/Avg	FG-FGA	Pct	3pt-Att	Pct	FT-FTA	Pct	Off	Def	Reb	Avg	PF	FO	A	TO	Blk	S	TP	Avg
2017-18	29	0	263/9.1	24-47	.511	0-0	.000	9-13	.692	12	40	52	1.8	55	1	7	15	6	10	57	2.0
2018-19	23	20	424/18.4	44-90	.489	0-1	.000	16-18	.889	23	44	67	2.9	74	0	6	22	8	15	104	4.5
CAREER	52	20	687/13.2	68-137	.496	0-1	.000	25-31	.806	35	84	119	2.3	129	1	13	37	14	25	161	3.1



#30 VICTORIA REYNOLDS

JUNIOR - FORWARD

FAIRFAX, VA./ARCHBISHOP SPALDING

>> REYNOLDS' CAREER HIGHS

MINUTES

Season	48	at Charleston, 2/8/19
Career	48	at Charleston, 2/8/19

POINTS

Season	17	(2x) last time at CofC, 2/8/19
Career	22	at St. Francis (Pa.), 12/2/17

REBOUNDS

Season	15	vs. East Carolina, 11/27/18
Career	18	vs. Charleston, 1/26/18

FIELD GOALS

Season	6	(4x) last time at UD, 2/1/19
Career	9	vs. Northeastern, 2/11/18

3-POINT FIELD GOALS

Season	4	vs. Towson, 2/22/19
Career	4	vs. Towson, 2/22/19

FREE THROWS

Season	7	at Charleston, 2/8/19
Career	9	vs. Old Dominion, 12/17/17

ASSISTS

Season	7	vs. Charleston, 1/13/19
Career	8	at East Carolina, 11/21/17

STEALS

Season	4	vs. Charleston, 1/13/19
Career	7	vs. Hofstra, 1/28/18

BLOCKS

Season	3	at Norfolk State, 12/21/18
Career	3	(3x) last time vs. NSU, 12/21/18

MISCELLANEOUS

Career in Double Figures	35
2018-19 in Double Figures	16

>> 2018-19 GAME-BY-GAME

Opp	Date	GS	Min	FG-A	3FG-A	FT-A	Reb.	A	TO	BLK	STL	P	PTS
VCU	11/6	*	37	4-7	0-0	0-0	4	5	2	0	0	8	8
HOW	11/12	*	26	3-10	0-2	4-6	5	3	1	0	2	10	10
at Loy	11/17	*	33	4-10	0-0	2-2	5	2	7	0	0	10	10
at DC	11/24	*	29	6-8	0-0	1-1	3	2	2	0	1	13	13
ECU	11/27	*	35	4-6	1-1	6-6	15	4	6	2	1	15	15
at Hart	11/30	*	29	1-6	0-0	2-2	7	1	5	0	3	4	4
at Fair	12/2	*	30	4-8	0-0	4-6	4	1	3	0	3	12	12
UOFR	12/5	*	35	5-8	2-2	2-2	6	0	5	0	1	14	14
at ODU	12/8	*	37	4-10	1-4	4-4	6	2	5	2	1	13	13
at NSU	12/21	*	35	2-5	1-2	6-8	9	2	2	3	1	11	11
GW	12/28	*	15	3-7	2-2	0-0	5	2	0	0	0	8	8
at Hof	1/4	*	13	0-1	0-0	0-0	1	0	4	0	0	0	0
at NU	1/6	*	30	4-10	1-3	0-0	3	2	5	0	2	9	9
UNCW	1/11	*	31	6-9	1-2	4-5	7	0	4	2	1	17	17
COFC	1/13	*	36	3-8	2-2	0-0	10	7	4	1	4	8	8
ELON	1/20	*	37	3-6	0-1	5-8	6	3	0	2	1	11	11
at JMU	1/25	*	34	1-4	1-2	2-2	0	0	2	0	1	5	5
at Tow	1/27	*	26	6-11	0-1	0-0	3	0	2	0	1	12	12
DEL	2/1	*	39	6-11	0-2	1-2	6	3	2	2	3	14	14
DREXEL	2/3	*	39	3-13	0-4	0-0	9	2	4	1	1	6	6
at CofC	2/8	*	48	5-15	0-2	7-8	5	3	1	1	0	17	17
at UNCW	2/10	*	40	4-11	0-2	2-2	4	3	6	0	1	10	10
at Elon	2/17	*	36	3-7	1-1	5-7	5	1	3	1	2	12	12
TOW	2/22	*	39	5-10	4-6	1-2	0	3	5	0	1	15	15

>> REYNOLDS' CAREER STATISTICS

Season	GP	GS	Min/Avg	FG-FGA	Pct	3pt-Att	Pct	FT-FTA	Pct	Off	Def	Reb	Avg	PF	FO	A	TO	Blk	S	TP	Avg
2016-17	28	0	466/16.6	51-104	.490	5-12	.417	36-46	.783	44	45	89	3.2	42	0	21	30	5	33	143	5.1
2017-18	30	30	977/32.6	125-270	.463	8-34	.235	50-68	.735	65	147	212	7.1	77	1	60	69	22	71	308	10.3
2018-19	24	21	787/32.8	89-201	.443	18-42	.429	58-73	.795	19	112	131	5.5	62	4	51	80	16	32	254	10.6
CAREER	82	51	2230/27.2	265-575	.461	31-88	.352	144-187	.770	128	304	432	5.3	181	5	132	179	43	136	705	8.6



#32 CAROLINE STOVER

FRESHMAN - CENTER

PLYMPTON, MASS. - CARDINAL SPELLMAN

>> STOVER'S CAREER STATISTICS

MINUTES		
Season	1	at Loyola, 11/14/18
Career	1	at Loyola, 11/14/18
POINTS		
Season	-	-
Career	-	-
REBOUNDS		
Season	-	-
Career	-	-
FIELD GOALS		
Season	-	-
Career	-	-
3-POINT FIELD GOALS		
Season	-	-
Career	-	-

FREE THROWS

Season	-
Career	-

ASSISTS

Season	-
Career	-

STEALS

Season	-
Career	-

BLOCKS

Season	-
Career	-

MISCELLANEOUS

Career in Double Figures	0
2018-19 in Double Figures	0

>> 2018-19 GAME-BY-GAME

Opp	Date	GS	Min	FG-A	3FG-A	FT-A	Reb.	A	TO	BLK	STL	PTS
VCU	11/6			DNP	-	COACH'S DECISION						
HOW	11/12			DNP	-	COACH'S DECISION						
at Loy	11/17	1		0-2	0-0	0-0	0	0	0	0	0	0
at DC	11/24			DNP	-	COACH'S DECISION						
ECU	11/27			DNP	-	COACH'S DECISION						
at Hart	11/30			DNP	-	COACH'S DECISION						
at Fair	12/2			DNP	-	COACH'S DECISION						
UOFR	12/5			DNP	-	COACH'S DECISION						
at ODU	12/8			DNP	-	COACH'S DECISION						
at NSU	12/21			DNP	-	COACH'S DECISION						
GW	12/28	1		0-0	0-0	0-0	0	0	0	0	0	0
at Hof	1/4			DNP	-	COACH'S DECISION						
at NU	1/6			DNP	-	COACH'S DECISION						
UNCW1	1/11			DNP	-	COACH'S DECISION						
COFC	1/13			DNP	-	COACH'S DECISION						
ELON	1/20			DNP	-	COACH'S DECISION						
at JMU	1/25			DNP	-	COACH'S DECISION						
at Tow	1/27			DNP	-	COACH'S DECISION						
DEL	2/1			DNP	-	COACH'S DECISION						
DREXEL	2/3			DNP	-	COACH'S DECISION						
at CofC	2/8			DNP	-	COACH'S DECISION						
at UNCW	2/10			DNP	-	COACH'S DECISION						
at Elon	2/17			DNP	-	COACH'S DECISION						
TOW	2/22			DNP	-	COACH'S DECISION						

>> STOVER'S CAREER STATISTICS

Season	GP	GS	Min/Avg	FG-FGA	Pct	3pt-Att	Pct	FT-FTA	Pct	Off	Def	Reb	Avg	PF	FO	A	TO	Blk	S	TP	Avg
2018-19	2	0	1/0.5	0-2	.000	0-0	.000	0-0	.000	0	0	0	0.0	0	0	0	0	0	0	0	0.0
CAREER	2	0	1/0.5	0-2	.000	0-0	.000	0-0	.000	0	0	0	0.0	0	0	0	0	0	0	0	0.0



2018-19 Tribe Women's Basketball



W&M Women's Basketball
William & Mary Season Schedule/Results & Leaders (as of Feb 22, 2019)
All games

RECORD:	OVERALL	HOME	AWAY	NEUTRAL
ALL GAMES	12-12	6-5	6-7	0-0
CONFERENCE	5-8	2-4	3-4	0-0
NON-CONFERENCE	7-4	4-1	3-3	0-0

Date	Opponent	Score	Att. High Points	High Rebounds
11/06/18	VCU	55-72 L	684 (15)Boggs, Bianca	(6)Boggs, Bianca
11/12/18	HOWARD	W 88-75	564 (26)Boggs, Bianca	(9)Boggs, Bianca
11/17/18	at Loyola	W 65-49	352 (14)Boggs, Bianca	(6)Reynolds, Victoria
11/24/18	at Davidson	65-76 L	412 (18)Boggs, Bianca	(10)Boggs, Bianca
11/27/18	EAST CAROLINA	W 63-43	574 (15)Reynolds, Victoria	(15)Reynolds, Victoria
11/30/18	at HARTFORD	45-50 L	649 (14)Hodgson, Eva	(7)Reynolds, Victoria
12/02/18	at Fairfield	W 60-54	627 (22)Boggs, Bianca	(5)Hodgson, Eva
				(5)Rogers, Gabby
				(5)Boggs, Bianca
12/05/18	RICHMOND	W 65-55	634 (15)Hodgson, Eva	(6)Reynolds, Victoria
12/8/18	at Old Dominion	69-83 L	1802 (18)Birdsong, Harper	(6)Reynolds, Victoria
				(6)Eichner, Bailey
12/21/18	at Norfolk State	W 55-44	246 (14)Birdsong, Harper	(9)Reynolds, Victoria
12/29/18	GEORGE WASHINGTON	W 73-59	611 (26)Boggs, Bianca	(10)Boggs, Bianca
1/4/19	*at Hofstra	W 60-55	323 (22)Boggs, Bianca	(10)Boggs, Bianca
01/06/19	*at Northeastern	74-88 L	540 (21)Boggs, Bianca	(6)Boggs, Bianca
01/11/19	*UNCW	W 70-64	657 (25)Boggs, Bianca	(7)Reynolds, Victoria
				(7)Pollard, Nyla
01/13/19	*COL. OF CHARLESTON	54-66 L	582 (18)Boggs, Bianca	(10)Reynolds, Victoria
01/20/19	*ELON	W 65-60	904 (13)Birdsong, Harper	(6)Reynolds, Victoria
				(13)Boggs, Bianca
1/25/19	*at James Madison	48-65 L	2234 (13)Hodgson, Eva	(11)Boggs, Bianca
1/27/19	*at Towson	W 80-69	609 (22)Boggs, Bianca	(8)Jones, Misha
02/01/19	*DELAWARE	59-70 L	634 (14)Reynolds, Victoria	(8)Boggs, Bianca
02/03/19	*DREXEL	58-62 L	962 (17)Boggs, Bianca	(9)Boggs, Bianca
				(9)Reynolds, Victoria
02/08/19	*at Charleston	77-79 Lo2	3031 (23)Boggs, Bianca	(12)Rogers, Gabby
02/10/19	*at UNCW	58-66 L	945 (24)Hodgson, Eva	(10)Boggs, Bianca
2/17/19	*at Elon	W 64-59	527 (14)Hodgson, Eva	(9)Boggs, Bianca
02/22/19	*TOWSON	75-82 L	727 (18)Boggs, Bianca	(5)Rogers, Gabby

* - CAA game

Attendance Summary	Games	Attend	Avg/Game
Home	11	7533	685
Away	13	12297	946
Neutral	0	0	0
Total	24	19830	826



W&M Women's Basketball
William & Mary Combined Team Statistics (as of Feb 22, 2019)
All games

RECORD:	OVERALL	HOME	AWAY	NEUTRAL
ALL GAMES	12-12	6-5	6-7	0-0
CONFERENCE	5-8	2-4	3-4	0-0
NON-CONFERENCE	7-4	4-1	3-3	0-0

#	Player	gp-gs	min	avg	Total		3-Point		F-Throw		Rebounds				pf	dq	a	to	blk	stl	pts	avg
					fg-fga	fg%	3fg-fga	3fg%	ft-fa	ft%	off	def	tot	avg								
02	Boggs, Bianca	24-24	845	35.2	139-328	.424	32-97	.330	94-132	.712	33	137	170	7.1	58	3	94	102	21	58	404	16.8
30	Reynolds, Victoria	24-21	787	32.8	89-201	.443	18-42	.429	58-73	.795	19	112	131	5.5	62	4	51	80	16	32	254	10.6
12	Birdsong, Harper	24-4	490	20.4	82-212	.387	44-115	.383	30-40	.750	14	30	44	1.8	43	1	26	39	6	17	238	9.9
10	Hodgson, Eva	24-24	769	32.0	76-174	.437	26-67	.388	58-70	.829	23	46	69	2.9	64	1	71	65	11	33	236	9.8
25	Rogers, Gabby	23-20	424	18.4	44-90	.489	0-1	.000	16-18	.889	23	44	67	2.9	74	0	6	22	8	15	104	4.5
15	Krause, Emma	24-3	345	14.4	36-103	.350	27-80	.338	7-12	.583	13	37	50	2.1	41	1	12	12	12	6	106	4.4
11	Pollard, Nyla	24-20	676	28.2	33-116	.284	11-48	.229	26-38	.684	26	42	68	2.8	50	2	63	42	3	25	103	4.3
05	Jones, Misha	24-3	298	12.4	26-61	.426	17-44	.386	14-16	.875	13	32	45	1.9	43	0	26	17	5	3	83	3.5
00	Underwood, Libby	12-0	65	5.4	4-13	.308	0-3	.000	2-4	.500	3	0	3	0.3	1	0	2	6	1	1	10	0.8
03	Taylor, Ashley	4-0	11	2.8	0-5	.000	0-4	.000	1-2	.500	0	0	0	0.0	0	0	0	0	0	0	1	0.3
20	Smith, Chandler	12-1	61	5.1	1-3	.333	0-0	.000	1-4	.250	3	12	15	1.3	8	0	1	7	4	1	3	0.3
21	Eichner, Bailey	14-0	78	5.6	1-9	.111	0-3	.000	1-2	.500	4	11	15	1.1	8	0	3	5	1	3	3	0.2
32	Stover, Caroline	2-0	1	0.5	0-2	.000	0-0	.000	0-0	.000	0	0	0	0.0	0	0	0	0	0	0	0	0.0
Team											49	56	105				12					
Total.....		24	4850		531-1317	.403	175-504	.347	308-411	.749	223	559	782	32.6	452	12	355	409	88	194	1545	64.4
Opponents.....		24	4849		539-1341	.402	114-406	.281	353-498	.709	299	601	900	37.5	453	9	284	434	85	214	1545	64.4

TEAM STATISTICS			WM	OPP	Date	Opponent	Score	Att.
SCORING			1545	1545	11/06/18	VCU	L 55-72	684
Points per game			64.4	64.4	11/12/18	HOWARD	w 88-75	564
Scoring margin			+0.0	-	11/17/18	at Loyola	w 65-49	352
FIELD GOALS-ATT			531-1317	539-1341	11/24/18	at Davidson	L 65-76	412
Field goal pct			.403	.402	11/27/18	EAST CAROLINA	w 63-43	574
3 POINT FG-ATT			175-504	114-406	11/30/18	at HARTFORD	L 45-50	649
3-point FG pct			.347	.281	12/02/18	at Fairfield	w 60-54	627
3-pt FG made per game			7.3	4.8	12/05/18	RICHMOND	w 65-55	634
FREE THROWS-ATT			308-411	353-498	12/8/18	at Old Dominion	L 69-83	1802
Free throw pct			.749	.709	12/21/18	at Norfolk State	w 55-44	246
F-Throws made per game			12.8	14.7	12/29/18	GEORGE WASHINGTON	w 73-59	611
REBOUNDS			782	900	* 1/4/19	at Hofstra	w 60-55	323
Rebounds per game			32.6	37.5	* 01/06/19	at Northeastern	L 74-88	540
Rebounding margin			-4.9	-	* 01/11/19	UNCW	w 70-64	657
ASSISTS			355	284	* 01/13/19	COL. OF CHARLESTON	L 54-66	582
Assists per game			14.8	11.8	* 01/20/19	ELON	w 65-60	904
TURNOVERS			409	434	* 1/25/19	at James Madison	L 48-65	2234
Turnovers per game			17.0	18.1	* 1/27/19	at Towson	w 80-69	609
Turnover margin			+1.0	-	* 02/01/19	DELAWARE	L 59-70	634
Assist/turnover ratio			0.9	0.7	* 02/03/19	DREXEL	L 58-62	962
STEALS			194	214	* 02/08/19	at Charleston	Lo2 77-79	3031
Steals per game			8.1	8.9	* 02/10/19	at UNCW	L 58-66	945
BLOCKS			88	85	* 2/17/19	at Elon	w 64-59	527
Blocks per game			3.7	3.5	* 02/22/19	TOWSON	L 75-82	727
ATTENDANCE			7533	12297				
Home games-Avg/Game			11-685	13-946				
Neutral site-Avg/Game			-	0-0				

* - CAA game

Score by Periods	1st	2nd	3rd	4th	OT	OT2	Totals
William & Mary	379	373	425	354	9	5	1545
Opponents	363	370	407	389	9	7	1545



W&M Women's Basketball
William & Mary Combined Team Statistics (as of Feb 22, 2019)
CAA games only

RECORD:	OVERALL	HOME	AWAY	NEUTRAL
ALLGAMES	5-8	2-4	3-4	0-0
CONFERENCE	5-8	2-4	3-4	0-0
NON-CONFERENCE	0-0	0-0	0-0	0-0

#	Player	gp-gs	min	avg	Total		3-Point		F-Throw		Rebounds				pf	dq	a	to	blk	stl	pts	avg
					fg-fga	fg%	3fg-fga	3fg%	ft-fga	ft%	off	def	tot	avg								
02	Boggs, Bianca	13-13	467	35.9	74-180	.411	20-55	.364	59-86	.686	21	75	96	7.4	36	3	49	54	11	28	227	17.5
10	Hodgson, Eva	13-13	455	35.0	47-103	.456	18-41	.439	40-44	.909	17	24	41	3.2	33	1	34	36	9	17	152	11.7
30	Reynolds, Victoria	13-11	447	34.4	49-116	.422	11-28	.393	27-36	.750	9	49	58	4.5	35	2	27	42	9	19	136	10.5
12	Birdsong, Harper	13-0	265	20.4	40-117	.342	20-61	.328	17-21	.810	9	20	29	2.2	20	0	12	16	4	7	117	9.0
25	Rogers, Gabby	12-9	217	18.1	22-45	.489	0-0	.000	11-12	.917	13	25	38	3.2	39	0	4	13	6	8	55	4.6
11	Pollard, Nyla	13-13	362	27.8	16-57	.281	6-25	.240	14-20	.700	18	20	38	2.9	23	1	35	21	2	12	52	4.0
05	Jones, Misha	13-2	186	14.3	15-35	.429	12-28	.429	9-10	.900	4	22	26	2.0	26	0	15	10	3	2	51	3.9
15	Krause, Emma	13-3	171	13.2	17-48	.354	13-40	.325	2-2	1.000	4	14	18	1.4	23	1	3	8	5	2	49	3.8
20	Smith, Chandler	5-1	29	5.8	1-2	.500	0-0	.000	0-2	.000	2	5	7	1.4	4	0	0	3	2	1	2	0.4
00	Underwood, Libby	3-0	13	4.3	0-4	.000	0-1	.000	1-2	.500	2	0	2	0.7	0	0	1	1	0	0	1	0.3
03	Taylor, Ashley	1-0	3	3.0	0-1	.000	0-1	.000	0-0	.000	0	0	0	0.0	0	0	0	0	0	0	0	0.0
21	Eichner, Bailey	8-0	35	4.4	0-2	.000	0-0	.000	0-0	.000	0	4	4	0.5	4	0	2	3	0	0	0	0.0
Team											28	24	52				7					
Total.....		13	2650		281-710	.396	100-280	.357	180-235	.766	127	282	409	31.5	243	8	182	214	51	96	842	64.8
Opponents.....		13	2650		309-748	.413	63-221	.285	204-282	.723	185	328	513	39.5	246	6	155	219	48	111	885	68.1

TEAM STATISTICS	WM	OPP	Date	Opponent	Score	Att.
SCORING	842	885	* 1/4/19	at Hofstra	W 60-55	323
Points per game	64.8	68.1	* 01/06/19	at Northeastern	L 74-88	540
Scoring margin	-3.3	-	* 01/11/19	UNCW	W 70-64	657
FIELD GOALS-ATT	281-710	309-748	* 01/13/19	COL. OF CHARLESTON	L 54-66	582
Field goal pct	.396	.413	* 01/20/19	ELON	W 65-60	904
3 POINT FG-ATT	100-280	63-221	* 1/25/19	at James Madison	L 48-65	2234
3-point FG pct	.357	.285	* 1/27/19	at Towson	W 80-69	609
3-pt FG made per game	7.7	4.8	* 02/01/19	DELAWARE	L 59-70	634
FREE THROWS-ATT	180-235	204-282	* 02/03/19	DREXEL	L 58-62	962
Free throw pct	.766	.723	* 02/08/19	at Charleston	Lo2 77-79	3031
F-Throws made per game	13.8	15.7	* 02/10/19	at UNCW	L 58-66	945
REBOUNDS	409	513	* 2/17/19	at Elon	W 64-59	527
Rebounds per game	31.5	39.5	* 02/22/19	TOWSON	L 75-82	727
Rebounding margin	-8.0	-				
ASSISTS	182	155				
Assists per game	14.0	11.9				
TURNOVERS	214	219				
Turnovers per game	16.5	16.8				
Turnover margin	+0.4	-				
Assist/turnover ratio	0.9	0.7				
STEALS	96	111				
Steals per game	7.4	8.5				
BLOCKS	51	48				
Blocks per game	3.9	3.7				
ATTENDANCE	4466	8209				
Home games-Avg/Game	6-744	7-1173				
Neutral site-Avg/Game	-	0-0				

* - CAA game

Score by Periods	1st	2nd	3rd	4th	OT	OT2	Totals
William & Mary	204	194	233	197	9	5	842
Opponents	206	210	232	221	9	7	885

