



## WILLIAM &amp; MARY

MEDIA RELATIONS DIRECTOR: Andrew Phillips / PHONE: (757) 221-3344 / CELL: (804) 840-4439 / EMAIL: atphillips01@wm.edu

## TRIBE BY THE NUMBERS

9	Emma Krause knocked down three 3-pointers and finished with nine points in the win versus Elon. It was the third time this season she hit at least three triples in a game.
15.7	W&M leads the CAA with 15.4 assists per game. The Tribe has 249 assists this season.
47.1%	Junior Victoria Reynolds ranks third in the conference as shooting 47.1-percent (56-for-119) from the field this year.
49	Freshman Eva Hodgson has recorded 49 assists this season, and needs just three more to move into 10th place all-time in W&M freshman history.
61	The senior class – Bianca Boggs, Misha Jones, & Chandler Smith – have won 61 games. They are just six wins away from becoming the winningest class in school history.
63.6%	Senior Misha Jones is shooting 63.6-percent (7-for-11) from 3-point range in her last three games.
70	70 seems to be a magic number under Swanson. W&M has reached that mark 42 times under Swanson, and has posted a 38-6 mark when it scores more than 70 points.
1201	Boggs now has 1,201 career points that ranks her 13th in school history. The senior needs 16 more points to pass Julie Sommer Leach '99 for 12th all-time.

## WHEN REFERENCING WILLIAM &amp; MARY AND TRIBE:

**William & Mary:** preferred in all but formal treatments  
**W&M:** most informal, use as second reference or on scorebug  
**College of William & Mary:** preferred formal treatment  
**Do not use:** WM, William and Mary, College of William and Mary, The College of William and Mary, The College

The William & Mary Athletics official nickname is the Tribe. While the Griffin is the official mascot of William & Mary Tribe Athletics, do not reference teams or the school as the Griffins.

## GAME

17

## WILLIAM &amp; MARY (10-6, 3-2 CAA) AT JAMES MADISON (13-4, 5-1 CAA)

Friday, Jan. 25, 2019 | 7:00 PM | Harrisonburg, Va. | JMU Convocation Center  
 Video: CAA.TV | Live Stats: JMUSports.com

## SERIES HISTORY

ALL-TIME	JMU leads 70-17	Last: JMU, 70-64 (3/3/18) (JMU Convocation Center)
AT JMU	JMU leads 35-5	Last: JMU, 70-64 (3/3/18) (JMU Convocation Center)

## W&amp;M NEWS AND NOTES

- The William & Mary women's basketball team starts a stretch of five of its next seven games away from Kaplan Arena as it travels to James Madison on Friday, Jan. 25. Tipoff between the Tribe and the Dukes is set for 7 p.m.

- W&M has been extremely good at bouncing back this season, and has posted a 7-0 record this year in games after a loss.

- The Green and Gold has outscored its opponents 523-473 in the first half of games this season, but has been outscored 520-503 in the second half this year. W&M owns a perfect 10-0 record when it leads at halftime, but is 0-6 when it trails or is tied at the break.

- Senior Misha Jones has heated up over the last three games. She is averaging 7.7 points, 2.0 rebounds, 2.3 assists, and 1.0 blocks per contest. More impressively, Jones has hit 7-of-her-last-11 3-point attempts, and is now shooting 45.2-percent from range this season.

- Redshirt sophomore Harper Birdsong jumped back up to fifth in the CAA in 3-point shooting percentage this season as she is hitting 40.2-percent (33-for-82) from range this season. Birdsong is second on the team averaging 10.7 points per game this year.

- The Green and Gold is hitting 3-pointers at the highest clip under Ed Swanson this season, and has had five, or more, 3-pointers in 14 of its 16 games. W&M leads the CAA hitting 7.6 3-pointers per game. That mark is two more than the next best average in the six-years under head coach Ed Swanson. As a team, the Tribe is hitting 35.6-percent from range, which is third in the CAA. Furthermore, W&M has hit more than 10 3-pointers in five games this season.

- Junior Victoria Reynolds returned to the starting lineup for the game against UNCW and has returned her scoring average back to double-figures. Reynolds had a season-high 17 points versus UNCW, and is now up to 10.2 points and 6.2 rebounds a night.

- W&M claimed its fourth CAA weekly award as freshman Eva Hodgson earned her second CAA Rookie of the Week award after averaging 17.0 points per game on 10-of-18 from the floor for the week of Jan. 7. Tribe senior Bianca Boggs was named the CAA Player of the Week for the week of Dec. 31, while freshman Emma Krause earned rookie of the week on Dec. 24.

- Boggs was announced as one of 30 national candidates for the Senior CLASS Award. The Senior CLASS Award focuses on the total student-athlete and encourages students to use their platform in athletics to make a positive impact as leaders in their communities. Boggs was the lone player from CAA women's basketball honored, and along with men's basketball player Paul Rowely, W&M was one of three DI schools with a candidate for the both the men's and women's Senior CLASS Award.

- Hodgson has started every game this season and the early returns on the rookie point guard have been good. The freshman has been in double-figures in six games, and is averaging 8.1 points per game (third most among CAA freshman), with 2.4 rebounds, and 3.1 helpers per contest. Hodgson scored a career-high 18 points in the CAA opener at Hofstra.

- Boggs has been in double-figures in 14 of 16 games this season, and has accomplished that feat in 39 of her last 46 contests. Boggs was selected to the Preseason All-CAA First-Team after a breakout junior season. The senior captain leads the team with 17.3 points per night, and has added 6.7 rebounds and 3.8 assists per night. She is one of five players nationally to lead her team in points, rebounds, assists, steals, and blocks as of Jan. 17. The senior has turned in 13, 20-point career games, which ranks her 10th all-time in school history.

	Nov. 6	VCU	L, 55-72	Senior Bianca Boggs scored 15 points, but the Tribe couldn't overcome an early scoring drought falling to in-state rival VCU on opening night.
	<b>NOV. 12 HOWARD</b>	<b>W, 88-75</b>		Four players scored in double-figures as the Tribe picked up its first victory of the season. Senior Bianca Boggs led the Tribe with 26 points, nine rebounds, and seven assists.
	Nov. 17	at Loyola (Md.)	W, 65-49	The Tribe led throughout as it won its first road game of the season with a convincing 65-49 decision at Davidson. Boggs (14) and Reynolds (10) were both in double-figures.
	Nov. 24	at Davidson	L, 65-76	W&M fought all afternoon, but Davidson pulled away down the stretch as it fell to Davidson 76-65. Bianca Boggs notched a double-double with 18 points and 10 rebs.
	<b>NOV. 27 ECU</b>	<b>W, 63-43</b>		Both Victoria Reynolds and Nyla Pollard recorded a double-double as the Tribe cruised to a 20-point victory after previously unbeaten East Carolina.
	Nov. 30	at Hartford	L, 45-50	W&M couldn't overcome a cold shooting night as it shot just 22.2-percent (12-of-54) from the floor. Freshman Eva Hodgson led the team with a career-high 14 points.
	Dec. 2	at Fairfield	W, 60-54	The Tribe outscored the Stags 6-0 in the final moments to pick up its fourth win of the season. Senior Bianca Boggs scored a game-high 22 to pace the Tribe.
	<b>Dec. 5 RICHMOND</b>	<b>W, 65-55</b>		W&M never trailed as it picked up its third straight win against Richmond. Freshman Eva Hodgson (15 pts) and Harper Birdson (13 pts) both had career-highs.
	Dec. 8	at Old Dominion	L, 69-83	ODU snapped a three-game losing streak to the Tribe at home. Redshirt sophomore Harper Birdsong led the Tribe with a career-high 18 points.
	Dec. 21	at Norfolk State	W, 55-44	The Tribe used a strong defensive effort to gut out a 55-44 road win at Norfolk State following a 13-day lay-off. Sophomore Harper Birdsong had a game-high 14 points off of the bench.
	<b>DEC. 29 GEORGE WASHINGTON</b>	<b>W, 73-59</b>		Senior Bianca Boggs recorded her second double-double with 26 points and 10 rebounds as the Tribe topped GW in a wire-to-wire win, 73-59.
	Jan. 4	at Hofstra*	W, 60-55	Senior Bianca Boggs had another double-double (22 pts, 10 reb) and freshman Eva Hodgson had a career-high 18 points as W&M won its second-ever game at Hofstra.
	Jan. 6	at Northeastern*	L, 74-88	Three scored in double-figures, but W&M couldn't overcome a big second half from Northeastern. Senior Bianca Boggs recorded her third straight 20-point game with 21.
	<b>JAN. 11 UNCW</b>	<b>W, 70-64</b>		W&M closed the first quarter on 17-0 run and never looked back as it picked up a 70-64 victory over UNCW. Bianca Boggs had 25 points and Victoria Reynolds had 17.
	<b>JAN. 13 CHARLESTON</b>	<b>L, 54-66</b>		The Tribe tied the game three times, but couldn't overcome a fiery Charleston team. Senior Bianca Boggs scored a game-high 18 points in the contest.
	<b>JAN. 20 ELON *</b>	<b>W, 65-60</b>		W&M used a 15-3 run to end third quarter and start the fourth to topple defending CAA Champion Elon. Bianca Boggs and Harper Birdsong led the team with 13 points.
	Jan. 25	at James Madison *	7 PM	W&M opens a two-game road trip as it travels to CAA preseason favorite James Madison. W&M won at the Convo in 2016-17, and lost a tough 70-64 game last year.
	Jan. 27	at Towson*	2 PM	The Tribe heads to SECU Arena looking for its third victory and its last four trips. W&M picked up a 75-63 victory in Maryland last season.
	<b>FEB. 1 DELAWARE*</b>	<b>7 PM</b>		The Green and Gold opens February as it welcomes Delaware to Kaplan Arena. W&M is looking to snap a two-game skid against the Blue Hens.
	<b>FEB. 3 DREXEL*</b>	<b>2 PM</b>		W&M plays on its 26th-consecutive Super Bowl Sunday as it welcomes Drexel for the Golden Game. The Tribe is 3-2 under Swanson on Super Sunday.
	Feb. 8	at Charleston*	12 PM	The Tribe opens a season-long three-game road swing with an afternoon game at Charleston. W&M is 3-2 at Charleston since the Cougars joined the league.
	Feb. 10	at UNCW*	2 PM	W&M heads to the Port City to close the weekend. The Tribe has won its last two games against UNCW at Trask Coliseum.
	Feb. 17	at Elon *	1 PM	The Tribe heads to the brand new Schar Center as it closes out the regular season with Elon. The Phoenix have topped W&M in the last two CAA Tournaments.
	<b>FEB. 22 TOWSON*</b>	<b>7 PM</b>		Towson and W&M close the regular season in Williamsburg this year. The Tigers squeaked out a one-point victory in its last trip to Kaplan Arena.
	<b>FEB. 24 JAMES MADISON*</b>	<b>2 PM</b>		W&M will raise breast cancer awareness as it welcomes James Madison to Kaplan Arena. The Dukes have won the last two meetings in Kaplan Arena.
	March 1	at Drexel*	7 PM	Drexel and W&M meet for the final time in the regular season when the Tribe travels to Philly. The Dragons are the defending CAA regular season champion.
	March 3	at Delaware*	2 PM	The Tribe heads to the site of the 2019 CAA Tournament when it travels to Delaware. W&M is 3-2 under Ed Swanson at Delaware during his tenure.
	<b>MARCH 7 NORTHEASTERN*</b>	<b>7 PM</b>		The Green and Gold plays host to Northeastern in its penultimate regular season game. The Tribe has a seven-game winning streak against the Huskies in Williamsburg.
	<b>MARCH 9 HOFSTRA*</b>	<b>2 PM</b>		W&M closes the regular season with the team it started CAA play against. The Tribe picked up a 63-53 victory over the Pride at Kaplan Arena last year.
	Mar. 13-16	CAA Championship		Delaware hosts the 2019 CAA Tournament at the Bob Carpenter Center in Newark, Del. The event runs from March 13-16.



GENERAL INFORMATION		LAST GAME STARTERS										
<b>Name:</b> College of William & Mary <b>Location:</b> Williamsburg, Va. <b>Founded:</b> 1693 (2nd oldest college in U.S.) <b>Enrollment</b> (includes graduate): 8,617 <b>Nickname:</b> Tribe <b>Colors:</b> Green, Gold and Silver <b>Arena (capacity):</b> Kaplan Arena (8,600) <b>Affiliation:</b> NCAA Division I <b>Conference:</b> Colonial Athletic Association (CAA) <b>President:</b> Katherine A. Rowe (Carleton, 1984) <b>Chancellor:</b> Robert M. Gates (William & Mary, 1965) <b>Director of Athletics:</b> Samantha K. Huge (Gordon, 1992)		<div>2</div> <div>BIANCA BOGGS</div> <div>Sr. • G • 5-9</div> <div>Waldorf, Md./St. Mary's Ryken</div>					<ul style="list-style-type: none"><li>Named team captain for the 2018-19 season.</li><li>Tabbed CAA Player of the Week for the week of Dec. 31.</li><li>Has 13 20-point games, including six 20-point games this season.</li><li>Scored a career-high 33 points in a win at St. Francis (12/2/17).</li><li>Ranks 13th in school history with 1,188 career points.</li></ul>					
		G-GS	PPG	RPG	APG	FG%	3P%	FT%	STL	BLK		
		16-16	17.3	6.7	3.8	.442	.353	.732	37	13		
		<div>10</div> <div>EVA HODGSON</div> <div>Fr. • G • 5-9</div> <div>Rindge, N.H./New Hampton School</div>					<ul style="list-style-type: none"><li>Named CAA Rookie of the Week for the week of Dec. 3 and Jan. 7.</li><li>Scored a career-high 18 points in the CAA opening win at Hofstra (1/4).</li><li>Had 16 points, four rebounds, two assists, and two steals at Northeastern (1/6).</li><li>Set career-highs against Richmond (12/5) in points (15) and assists (6).</li><li>Her parents and two brothers all played Division III basketball.</li></ul>					
		G-GS	PPG	RPG	APG	FG%	3P%	FT%	STL	BLK		
		16-16	8.1	2.4	3.1	.415	.350	.737	23	6		
		<div>11</div> <div>NYLA POLLARD</div> <div>So. • G • 5-9</div> <div>Virginia Beach, Va./Princess Anne</div>					<ul style="list-style-type: none"><li>Made her first start of the year &amp; had a double-double (10 pts, 12 reb) vs. ECU (11/27).</li><li>Had nine points and added two rebounds, four assists, and a steal at Loyola (11/17).</li><li>Chipped in nine points and a career-high six helpers in the win vs. UNCW (1/11).</li><li>Scored a career-high 14 points, four assists, three rebounds against Upstate (12/5/17).</li></ul>					
		G-GS	PPG	RPG	APG	FG%	3P%	FT%	STL	BLK		
		16-16	4.7	2.9	2.7	.298	.235	.654	16	3		
		<div>25</div> <div>GABBY ROGERS</div> <div>So. • C • 6-3</div> <div>Dallas, Texas/Bishop Lynch</div>					<ul style="list-style-type: none"><li>Center that has started 14 games this season for the Tribe.</li><li>Had eight points and tied a career-high with five rebounds in the win at Fairfield (12/2).</li><li>Scored a career-high 10 points and a steal at Davidson (11/24).</li><li>Notched a then-season-high eight points in the win at Loyola (11/17).</li><li>Made her first career start on opening night against VCU (11/6) scoring four points.</li></ul>					
		G-GS	PPG	RPG	APG	FG%	3P%	FT%	STL	BLK		
		16-14	3.9	2.8	0.3	.458	.000	.818	13	6		
		<div>30</div> <div>VICTORIA REYNOLDS</div> <div>Jr. • F • 5-10</div> <div>Fairfax, Va./Archbishop Spalding</div>					<ul style="list-style-type: none"><li>Recorded a double-double with 15 points and 15 rebounds against ECU (11/27/18).</li><li>Notched a season-high 17 points with 7 rebs vs. UNCW (1/11).</li><li>Scored 14 points and matched a career-high with two 3-pointers against UofR (12/5/18).</li><li>Poured in a career-high 22 points in the win at St. Francis (12/2/17).</li><li>Grabbed 18 boards in the win against Charleston (1/26/18).</li></ul>					
		G-GS	PPG	RPG	APG	FG%	3P%	FT%	STL	BLK		
		16-13	10.2	6.2	2.3	.471	.710	.500	12	5		
WOMEN'S BASKETBALL INFORMATION												
<b>Head Coach:</b> Ed Swanson (Sacred Heart, 1989) <b>Record at W&amp;M:</b> 84-83 (sixth season) <b>Career Record:</b> 490-347 (29th season) <b>Assistant Coach:</b> Lynne-Ann Kokoski (Bryant, 2008) <b>Assistant Coach:</b> Chanel Murchison (William & Mary, 2013) <b>Assistant Coach:</b> Tierra Rudd (Winston-Salem, 2008) <b>Dir. of Operations:</b> Michelle Kurowski (UMBC, 2011) <b>2017-18 Record (CAA):</b> 16-14 (7-11/6th) <b>Starters Returning/Lost:</b> 3/2 <b>Letterwinners Returning/Lost:</b> 10/4 <b>First Year of Basketball:</b> 1919-20 <b>All-Time Record:</b> 664-959-9 <b>WNIT Appearances:</b> None <b>NCAA Appearances:</b> None												
TRIBE TRENDS												
<b>WILLIAM &amp; MARY RECORD</b>												
Overall.....10-6												
CAA Games.....3-2												
Leads at halftime.....10-0												
Trails at halftime.....0-5												
Tied at Halftime.....0-1												
Home.....6-2												
Away.....4-4												
Neutral.....0-0												
<b>BY MONTH</b>												
November.....3-3												
December.....4-1												
January.....3-2												
February.....0-0												
March.....0-0												
<b>SCORING...</b>												
W&M scores fewer than 40 pts.....0-0												
W&M scores 40-49.....0-1												
W&M scores 50-59.....1-2												
W&M scores 60-69.....6-2												
W&M scores 70-79.....2-1												
W&M scores 80+.....1-0												
Opp. scores fewer than 40 pts.....0-0												
Opp. scores 40-49.....3-0												
Opp. scores 50-59.....5-1												
Opp. scores 60-69.....2-1												
Opp. scores 70-79.....0-2												
Opp. scores 80+.....0-2												
<b>FROM THE FIELD ...</b>												
W&M shoots below 35%.....0-2												
W&M shoots better than 35%.....10-4												
W&M shoots better than 40%.....7-2												
W&M shoots better than 45%.....3-1												
W&M shoots better than 50%.....1-0												
<b>FINAL MARGIN</b>												
1-3 points.....0-0												
4-7 points.....4-1												
8-10 points.....1-0												
11-15 points.....3-4												
16+ points.....2-1												
In Overtime.....0-0												
<b>BATTLE OF THE BOARDS</b>												
Outrebounding opponent.....2-0												
Outbounded by opponent.....7-6												
Rebounds are even.....1-0												
<b>DOWN TO THE WIRE</b>												
Leading with 5:00 left.....8-0												
Trailing with 5:00 left.....1-6												
Tied with 5:00 left.....1-0												
<b>LAYING IT ON THE LINE...</b>												
W&M attempts more free throws.....4-1												
Opp. attempts more free throws.....5-5												
Free Throws are even.....1-0												
<b>JERSEY COLOR</b>												
White.....5-2												
Green.....3-3												
Gold.....2-1												
Pink.....0-0												
<b>STRENGTH OF OPPOSITION</b>												
vs. Top 25 teams.....0-0												
vs. teams with a winning record.....3-2												
vs. teams .500 record.....1-0												
vs. teams with a losing record.....6-3												
<b>STREAKING</b>												
Coming off of a win.....4-5												
Coming off of a loss.....6-0												
Longest Winning Streak.....W3												
Longest Losing Streak.....L1												
Current Streak.....W1												
RESERVES												
POS.	NO.	NAME	HT.	CL.	G-GS	PPG	RPG	APG	FG%	3P%	FT%	MISC.
G	0	Libby Underwood	5-9	So.	10-0	1.0	0.1	0.1	.400	.000	.500	1 blk
NOTE: Scored six points in the second half of the game versus VCU (11/6).												
G	1	Sydney Wagner	5-6	So.	-	-	-	-	-	-	-	-
NOTE: Transfer from Stetson that has to sit out the 2018-19 season due to NCAA Transfer Rule												
G	3	Ashley Taylor	5-8	Jr.	3-0	0.3	0.0	0.0	.000	.000	.500	-
NOTE: Has appeared in 23 career games in career.												
G/F	5	Misha Jones	5-9	Sr.	16-3	4.0	1.8	1.3	.457	.452	.800	3 stl
NOTE: Matched a career-high with nine points vs. UNCW (1/11); Hit 7-of-her-last-11 3-pointers												
G	12	Harper Birdsong	5-10	R-So.	16-4	10.7	1.9	1.2	.389	.402	.710	12 stl
NOTE: First player off of the bench; Scored a career-high 18 at ODU (12/5).												
F	15	Emma Krause	6-2	Fr.	16-2	4.3	2.1	0.7	.324	.321	.545	9 blk
NOTE: Had 14 points in the win against Howard (11/12); Had nine against Elon (1/20).												
C	20	Chandler Smith	6-3	Sr.	7-0	0.1	1.1	0.1	.000	-	.500	2 blk
NOTE: Named a team captain for 18-19; Reserve post that has appeared in 58 career games.												
G/F	21	Bailey Eichner	6-1	Fr.	10-0	0.3	1.3	0.2	.125	.000	.500	3 stl
NOTE: Had a career-high six rebounds at ODU (12/5)												
C	32	Caroline Stover	6-3	Fr.	2-0	0.0	0.0	0.0	.000	.000	.000	-
NOTE: Ranked as the No. 131 recruit in her class on BlueStar												
W&M INDIVIDUAL SUPERLATIVES												
<b>Double-Digt Games</b>					16-17	17-18	18-19	Career	<b>10-Assist Games</b>			
Bianca Boggs					8	25	14	56	16-17			
Victoria Reynolds					4	15	10	29	17-18			
Harper Birdsong					-	-	10	10	18-19			
Eva Hodgson					-	-	6	6	Career			
Nyla Pollard					-	3	1	4	Bianca Boggs			
Emma Krause					-	-	1	1	- 1 3 5			
Gabby Rogers					-	-	1	1	Victoria Reynolds			
									- 1 1 2			
									Nyla Pollard			
									- - 1 1			
<b>20-Point Games</b>					16-17	17-18	18-19	Career	<b>Leading Scorer (times):</b> - Boggs (11), Birdsong (3), Hodgson (2), Reynolds (1)			
Bianca Boggs					-	7	6	13	<b>Leading Rebounder (times):</b> - Reynolds (9), Boggs (7), Hodgson (1), Eichner (1), Pollard (1), Rogers (1)			
Victoria Reynolds					-	1	-	1	<b>Leading Assists (times):</b> - Boggs (8), Hodgson (6), Pollard (4), Reynolds (2), Birdsong (1), Jones (1)			
<b>30-Point Games</b>					16-17	17-18	18-19	Career	<b>Charges (times):</b> - Jones (9), Rogers (6), Eichner (5), Hodgson (3), Birdsong (1)			
Bianca Boggs					-	1	-	1	<b>Three-Point Plays (Made/Attempted):</b> - Birdsong (1/1), Hodgson (1/1), Jones (1/1), Krause (1/1), Rogers (1/1), Boggs (13/15), Reynolds (1/2), Pollard (0/2)			
<b>10-Rebound Games</b>					16-17	17-18	18-19	Career	<b>Four-Point Plays (Made/Attempted):</b> - Jones (1/1)			
Victoria Reynolds					-	4	3	7				
Bianca Boggs					1	1	3	5				



Team

<b>W&amp;M scored 80+ points</b>	<b>11/12/2018</b>	<b>88 (88-75, W vs. Howard)</b>
<b>W&amp;M scored 85+ points</b>	<b>11/12/2018</b>	<b>88 (88-75, W vs. Howard)</b>
W&M scored 90+ points	12/2/2017	92 (92-86, W at St. Francis (Pa.))
W&M scored 95+ points	2/16/2014	97 (97-44 W, vs. UNCW)
<b>Opponent scored 80+</b>	<b>1/6/2019</b>	<b>88 (74-88, L at Northeastern)</b>
Opponent scored 85+	2/2/2017	86 (41-86, L vs. James Madison)
Opponent scored 90+	11/17/2017	92 (92-81 L, at St. John's)
<b>W&amp;M grabbed 50+ rebounds</b>	<b>11/27/2018</b>	<b>58 (63-43 W, vs. East Carolina)</b>
W&M grabbed 60+ rebounds	12/21/2006	60 (73-58 W, at Norfolk State)
<b>Held an Opponent to 50 pts. or less</b>	<b>12/21/2018</b>	<b>44 (55-44, W at Norfolk State)</b>
Held an Opponent to 40 pts. or less	12/3/2016	39 (67-39, W vs. Richmond)
<b>W&amp;M was held under 50 pts.</b>	<b>11/30/2018</b>	<b>45 (45-50 L, at Hartford)</b>
<b>Shot 50% from the field</b>	<b>11/17/2018</b>	<b>51.0% (26-for-51) (65-49, W at Loyola)</b>
<b>Shot 80-89% from the foul line (8 or more attempts)</b>	<b>1/11/2019</b>	<b>81.8% (18-for-22) (70-64, W vs. UNCW)</b>
Shot 90-99% from the foul line (8 or more attempts)	2/9/2018	90.0 (9-for-10) (59-68, L at Delaware)
Shot 100% from the foul line (8 or more attempts)	2/28/2016	100.0% (8-8) (53-69, L at Drexel)
<b>Had a 20-pt. win</b>	<b>11/27/2018</b>	<b>20 (63-43 W, vs. East Carolina)</b>
Had a 30-pt. win	11/28/2016	34 (W, 82-48 vs. Delaware State)
Had a 40-pt. win	2/16/2014	53 (97-44 W, vs. UNCW)
Had a 50-pt. win	2/16/2014	53 (97-44 W, vs. UNCW)
Had a 20-pt. loss	3/1/2018	21 (L, 61-82 at Elon)
Had a 30-pt. loss	2/2/2018	45 (L, 41-86 vs. James Madison)
An overtime win	11/21/2017	71-65, W at East Carolina
An overtime loss	1/9/2018	58-65, L vs. Drexel
A double-overtime game	2/6/2015	72-68, W at Drexel
A triple-overtime game	11/29/1999	77-83, L at VCU
10-game winning streak	2016-17	11 (11/18/2016-1/6/17)
5-game winning streak	2017-18	7 (11/21/2017-12/21/2017)
5-game losing streak	2017-18	7 (2/16/2018-11/12/2018)
10-game losing streak	2012-13	11 (11/25/2012-1/20/2013)

Individual

<b>20-24 pts.</b>	<b>21, Bianca Boggs at Northeastern, 1/6/19</b>
<b>25-29 pts.</b>	<b>25, Bianca Boggs vs. UNCW, 1/11/19</b>
30-34 pts.	33, Bianca Boggs at St. Francis (Pa.), 12/2/17
35-39 pts.	39, Lynn Norenberg at Virginia Wesleyan, 11/15/80
40+ pts.	53, Bebe Fisher vs. Norfolk Division, 2/13/52
5 players in double figures	Bianca Boggs (26), Victoria Reynolds (15), Abby Rendle (12), Nari Garner (11), Jenna Green (10) vs. College of Charleston, 1/26/18
Two players with 20 pts. or more	Jenna Green (22) and Bianca Boggs (21) at Towson, 2/4/18
<b>Player with 10-14 rebounds</b>	<b>10, Victoria Reynolds vs. Charleston, 1/13/19</b>
<b>Player with 15-19 rebounds</b>	<b>15, Victoria Reynolds vs. East Carolina, 11/27/18</b>
Player with 20 or more rebounds	21, Emily Correal vs. George Mason, 3/16/13
<b>Two players with 10 or more rebounds</b>	<b>15, Victoria Reynolds, 12, Nyla Pollard, &amp; 11 Bianca Boggs vs. ECU, 11/27/18</b>
A player with a triple-double	Abby Rendle (25 pts, 17 reb, 10 blks) at East Carolina, 11/21/17
<b>A player with a double-double</b>	<b>Bianca Boggs (22 pts, 10 reb) at Hofstra, 1/4/19</b>
<b>Two players with double-doubles</b>	<b>Victoria Reynolds (15 pts, 15 reb) &amp; Nyla Pollard (10 pts, 12 reb.) vs. ECU, 11/27/18</b>
100% from the field (min. 5 made)	7-for-7, Abby Rendle vs. Drexel, 3/1/17
<b>100% from foul line (min. 5 made)</b>	<b>7-for-7, Bianca Boggs at Hofstra, 1/4/18</b>
<b>5-7 Assists</b>	<b>6, Eva Hodgson vs. Elon, 1/20/19</b>
8-9 Assists	8, Bianca Boggs at Delaware, 2/9/18
10+ Assists	11, Jenna Green vs. College of Charleston, 1/26/18
<b>5 or more steals</b>	<b>6, Bianca Boggs at Hartford, 11/30/18</b>
5-9 blocks	6, Abby Rendle at Delaware, 2/9/18
10+ blocks	11, Abby Rendle vs. College of Charleston, 1/26/18

BOLD - Happened in the 2018-19 season

**LIBBY UNDERWOOD**

So. • Guard • 5-9  
Rye, New Hampshire

**SYDNEY WAGNER**

So. • Guard • 5-6  
Phoenixville, Pa.

**BIANCA BOGGS**

Sr. • Guard • 5-5  
Waldorf, Md.

**ASHLEY TAYLOR**

Jr. • Guard • 6-0  
Charlottesville, Va.

**MISHA JONES**

Sr. • Guard/Forward • 5-9  
Manassas Park, Va.

**EVA HODGSON**

Fr. • Guard • 5-9  
Rindge, New Hampshire

**NYLA POLLARD**

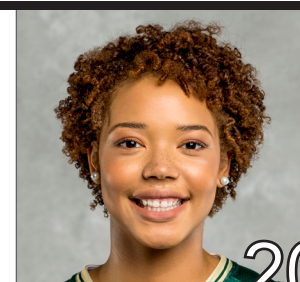
So. • Guard • 5-9  
Virginia Beach, Va.

**HARPER BIRDSONG**

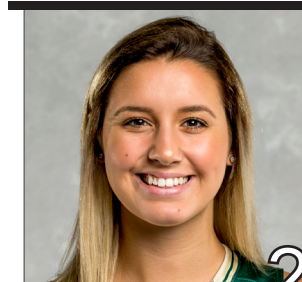
R-So. • Guard • 5-10  
Suffolk, Va.

**EMMA KRUSE**

Jr. • Center • 6-3  
Port Tobacco, Md.

**CHANDLER SMITH**

Sr. • Center • 6-3  
Port Tobacco, Md.

**BAILEY EICHNER**

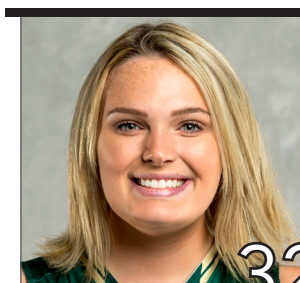
So. • Guard/Forward • 6-1  
Cudahy, Wisc.

**GABBY ROGERS**

Fr. • Center • 6-1  
Dallas, Texas

**VICTORIA REYNOLDS**

Jr. • Forward • 5-10  
Fairfax, Va.

**CAROLINE STOVER**

Fr. • Center • 6-3  
Plympton Mass.

**ED SWANSON**

Sixth Season at W&M  
29th Overall

**PRONUNCIATION GUIDE**

Bailey **EICHNER**    IKE-ner

Lynne **KOKOSKI**    Kah-kaw-ski

**CHANEL** Murchison    Shh-nell





ED

SWANSON

## HEAD COACH

29<sup>TH</sup> SEASON OVERALL6<sup>TH</sup> SEASON AT W&M

## PROFILE

Wife: Marion

Children: Connor and Matthew

## Education

Sacred Heart, 1989

## Coaching Career

Sacred Heart (1989-13)

William &amp; Mary (2013-P)

## CAREER HIGHLIGHTS

- Three NCAA Tournament Appearances
- Led W&M to 1st Division I Postseason berth in the WBI.
- Led W&M to a school record 20 wins in 2016-17
- 2016-17 VaSID Coach of the Year
- Six Postseason Appearances
- Four regular season conference championships and three postseason league titles
- 2009 New England Hall of Fame Inductee
- Eight 20-win seasons
- Five-time Conference Coach of the Year
- On five occasions, his teams have earned to the WBCA Academic Top 25 Team Honor

Ed Swanson enters his sixth season with the Green and Gold. He became the fifth Division I head women's basketball coach in William and Mary history on May 7, 2013. Prior to coming to Williamsburg, he spent 23 years transforming Sacred Heart University from a Division II program into one of the top teams in the Northeast Conference. Swanson owns a career record of 464-327 (.587).

The success continued for the Tribe during the 2017-18 season. W&M won 16 games, which is tied for the fourth most in school history, and posted its second straight winning season for the first time since 2005-06 and 2006-07. His first recruiting class became the winningest class in school history with the team's victory over College of Charleston on Jan. 26. The seniors went onto win 66 games during their four year career. The Tribe raced out to an 11-2 start for the third straight season, which equaled the best 13-game start in school history, and led the CAA in blocked shots (218) and blocked shots per game (7.3), which ranked fourth and third in the NCAA, respectively. Both numbers are single-season school records. Individually, he mentored three players to five All-CAA awards, including All-CAA First-Team selection Bianca Boggs, who became the first Tribe player in a decade to be named to the league's first-team. Additionally, Boggs was named to the league's all-defensive team, while Abby Rendle claimed a spot on the All-CAA Third-Team, and All-Defensive Team, and freshman Nyla Pollard was picked to the CAA All-Rookie team.

Swanson led the Tribe to one of its best seasons in program history in 2016-17. The Tribe tied a school record with 20 wins, while winning a CAA Tournament game for the first time since 2009, and advancing to the CAA Semifinals for the first-time since 2001. Under his leadership, the Tribe won 11-straight games, which is the longest single-season streak in school history, from Nov. 18, 2016-Jan. 2, 2017. W&M had four players claim seven all-conference awards this season, including seniors Alexandra Masaquel and Marlena Tremba, who each earned second-team citations. Additionally, Masaquel was tabbed the Richmond Times-Dispatch All-State Second-Team, while Tremba earned VaSID All-State Second-Team honors. For his efforts, VaSID honored him as the Virginia State Coach of the Year.

Once again Swanson's third season was one for the record books. The Tribe raced out to its best start in school history with an 11-2 record. W&M went onto again to win the fourth most wins in school history with 15. For the second straight season the Tribe broke the blocks and assist record, by tying the single season assist record (466) and broke the school record for blocks with 148. During the season junior Marlena Tremba became the 15th player in school history to break the 1000-point barrier. Individually, four players earned All-CAA awards as junior Alexandra Masaquel was tabbed to the second-team and all-defensive team, Tremba earned third-team honors, and freshman Bianca Boggs picked up a spot on the all-rookie team. The Tribe was also rewarded for its hard work in the classroom as Masaquel, Tremba, and sophomore Jenna Green earned all-academic team honors.

Swanson's second year with the Green and Gold was one for the record books. The Tribe racked up 15 wins, the fourth-most in school history, on its way to its first-ever postseason appearances with bid in the Women's Basketball Invitational. The Green and Gold had a seven-win turnaround, while setting three school records for assists (466), blocked shots, (143), blocked shots per game (4.5). Individually he helped lead four players to five All-CAA awards. Sophomore Marlena Tremba was named to the All-CAA Third-Team, senior Jazmen Boone was named to the All-Defensive Team, freshman Abby Rendle to the All-Rookie and All-Defensive team, and senior Kyla Kerstetter earned all-academic honors.

In his first season with the Tribe, Swanson led a young team to eight victories in a seven-seed in the CAA Tournament. The Green and Gold finished in the top 10 nationally in steals per game, while Jazmen Boone also ranked in the top 20 in the NCAA in the same category. Under his guidance Kaitlyn Mathieu garnered Third-Team All-Colonial Athletic Association honors, and went on to sign a professional contract with a team in Germany. In addition, guard Marlena Tremba went onto win CAA Rookie of the Year, and was named to the all-rookie squad. Boone was named to the all-defensive team, while she and Kyla Kerstetter took home all-academic honors.

Swanson oversaw Sacred Heart's transition from Division II to Division I in 1999-00, and the program took off under his direction. Over Sacred Heart's 14 years in Division I, Swanson led SHU



to a 280-145 record (.664), including a 190-62 (.754) record in the NEC. He departed as the NEC's all-time winningest head coach with all of his SHU teams finishing third or higher in the league standings. Swanson-lead teams have posted 13 straight winning seasons and 12 straight campaigns with 18 or more victories, including six with 20 or more wins. In 2009, he was inducted into the New England Basketball Hall of Fame.

In total, Swanson-coached players earned 19 All-NEC honors, including nine first-team awards, nine NEC All-Tournament Team honors, eight NEC All-Rookie Team selections, four NEC Rookies of the Year, three NEC Tournament MVPs and three NEC Players of the Year.

His teams have also enjoyed success in the classroom. On five occasions, the Pioneers were selected to the Women's Basketball Coaches Association (WBCA) Academic Top 25 Team Honor Roll, which has recognized outstanding academic performances from the top teams in each of the five collegiate divisions since 1995-96. On eight occasions since 2003, one of his players was a CoSIDA Academic All-District selection and two Pioneer players were named NEC Scholar-Athlete of the Year.

In 2012-13, Swanson led Sacred Heart to its third straight postseason appearance, and in the process, recorded his 400th career victory. His milestone win came on Feb. 12, 2013 as the Pioneers defeated Fairleigh Dickinson. SHU completed the season at 22-11, finishing second in the NEC with a 13-5 ledger and garnering a berth in the program's first Women's National Invitational Tournament (WNIT).

Sacred Heart claimed its third NEC Championship and advanced to the NCAA Tournament in 2011-12. The Pioneers also ranked 23rd nationally in the WBCA Academic Top 25 Team Honor Roll with a team GPA of 3.35. SHU compiled a season mark to 25-8, winning both the regular season and postseason crowns in the league as Swanson was named NEC Coach of the Year for the fourth time.

The Pioneers earned a berth in the 2011 Women's Basketball Invitational and finished the year at 18-13 with a 12-6 mark in the NEC. After a 0-5 start to the 2008-09 season, Swanson's Pioneers reeled off a 21-game winning streak, the longest in school history and second longest in the country, before finishing with 25-8 record. SHU completed the NEC regular season with a perfect 18-0 mark, becoming just the third team in the history of the conference to accomplish the feat. Swanson earned NEC Coach of the Year honors as Sacred Heart finished off an amazing season by capturing its second league title and trip to the NCAA Tournament over a four-year span. During the 2008-09 season, Swanson moved past former Mount St. Mary's head coach Bill Sheahan (124) as all-time leader in Northeast Conference wins and eclipsing the 300-win plateau in his career.

The 2005-06 season saw Swanson lead the Sacred Heart program to its first NCAA Tournament, capturing the NEC Championship in just its seventh season at the Division I level. Swanson guided the Pioneers to a school record 26-5 record, including a 16-2 NEC ledger. He also garnered career victory No. 250 during the season.

Under his leadership, Sacred Heart was one of the toughest teams on its home court, the William H. Pitt Center, which opened in 1997. During the Pitt Center's opening 16 seasons, Swanson's teams won 81.9 percent (185-41) of its home games. In 2011-12, SHU went 15-1 at home, a season bested only by a perfect 15-0 in 2005-06 and 14-0 in 2003-04. During the stretch, the Pioneers' home winning percentage at the Pitt Center ranked among the best nationally.

After directing the Pioneers to a 20-7 record — the program's first 20-win season — in 1995-96, Swanson was voted Coach of the Year in the New England Collegiate Conference (NECC) and the Women's Basketball Coaches Association's (WBCA) District I.

Swanson took the reins of the Sacred Heart University women's basketball program in 1990 and built the Pioneers into one of the top teams in the Northeast. He joined Dave Bike's men's basketball coaching staff at SHU in 1989, and, after becoming head coach of the Pioneer women's program in 1990, did double duty for three seasons before becoming the University's first full-time women's coach in 1993. Prior to Swanson's arrival,

## CAREER RECORD

YEAR	OVERALL RECORD	CONF. RECORD	CONF. FINISH	POST SEASON
1990-91	8-19	3-11	7th	
1991-92	11-16	5-9	T5th	
1992-93	16-13	7-7	4th	
1993-94	12-15	8-8	5th	
1994-95	11-16	7-9	5th	
1995-96	20-7	16-4	T2nd	
1996-97	14-14	10-8	5th	
1997-98	19-7	13-3	2nd	
1998-99	15-12	12-6	3rd	
1999-00	14-14	11-7	T3rd	
2000-01	15-14	11-7	T3rd	
2001-02	18-11	13-5	T2nd	
2002-03	18-10	12-6	T3rd	
2003-04	21-8	14-4	2nd	
2004-05	18-11	14-4	2nd	
2005-06	26-5	16-2	1st	NCAA
2006-07	22-10	15-3	T1st	
2007-08	19-11	14-4	3rd	
2008-09	25-8	18-0	1st	NCAA
2009-10	19-11	14-4	3rd	
2010-11	18-13	12-6	T3rd	WBI
2011-12	25-8	15-3	1st	NCAA
2012-13	22-11	13-5	2nd	WNIT
2013-14	8-21	5-11	8th	
2014-15	15-16	9-9	6th	WBI
2015-16	15-15	6-12	7th	
2016-17	20-11	9-9	4th	
2017-18	16-14	7-11	6th	
2018-19	10-6	3-2		
Career	490-347 (.585)	295-181 (.620)		
Division I	364-228 (.615)	230-116 (.665)		
W&M/CAA	84-83 (.503)	39-54 (.419)		

the Sacred Heart women's team compiled a 4-21 record. Under his guidance, the climb to Division II respectability was accomplished within three seasons, from 8-19 to 11-16 and, in 1992-93, to 16-13 — the program's first winning record in 11 seasons.

In his time at SHU, he was a four-time NEC Coach of the Year, led Sacred Heart to five postseason bids, including three NCAA Tournament appearances. Swanson guided the Pioneers to four NEC regular season crowns and three NEC tournament championships. SHU posted 20-win seasons seven times during his tenure, including five of the last eight years.

He earned a bachelor's degree in business from Sacred Heart in 1989. Also during his tenure at SHU, Swanson served as the moderator for the Pioneer Student-Athlete Council from 1998-01 and was the annual coordinator of commencement exercises since 2000. Swanson and his wife, Marion, have two sons, Connor and Matthew.



# #0 LIBBY UNDERWOOD

## SOPHOMORE - GUARD

### RYE, N.H. - PORTSMOUTH

#### >> UNDERWOOD'S CAREER HIGHS

##### MINUTES

Season 13 vs. VCU, 11/6/18  
Career 15 vs. USC Upstate, 12/5/17

##### POINTS

Season 6 vs. VCU, 11/6/18  
Career 8 vs. USC Upstate, 12/5/17

##### REBOUNDS

Season 1 vs. Howard, 11/12/18  
Career 3 at Northeastern, 1/21/18

##### FIELD GOALS

Season 3 vs. VCU, 11/6/18  
Career 3 vs. VCU, 11/6/18

##### 3-POINT FIELD GOALS

Season -  
Career 1 (3x) last time vs. Upstate 12/5/17

##### FREE THROWS

Season 1 (2x) last time at NU, 1/6/18  
Career 5 vs. USC Upstate, 12/5/17

##### ASSISTS

Season 1 vs. VCU, 11/6/18  
Career 3 vs. USC Upstate, 12/5/17

##### STEALS

Season 1 at Old Dominion, 12/8/18  
Career 1 (3x) last time at ODU, 12/8/18

##### BLOCKS

Season 1 vs. VCU, 11/6/18  
Career 1 vs. VCU, 11/6/18

##### MISCELLANEOUS

Career in Double Figures 0  
2018-19 in Double Figures 0

#### > 2018-19 GAME-BY-GAME

Opp	Date	GS	Min	FG-A	3FG-A	FT-A	Reb.	A	TO	BLK	STL	PTS
VCU	11/6		14	3-4	0-1	0-0	0	1	1	0	1	6
HOW	11/12		2	0-1	0-0	0-0	1	0	0	0	0	0
at Loy	11/17		11	0-1	0-0	0-0	0	0	0	0	0	0
at DC	11/24		6	0-1	0-1	0-0	0	0	0	0	0	0
ECU	11/27			DNP - COACH'S DECISION								
at Hart	11/30		2	0-0	0-0	0-0	0	0	0	0	0	0
at Fair	12/2			DNP - COACH'S DECISION								
UOFR	12/5		1	1-1	0-0	0-0	0	0	0	0	0	2
at ODU	12/8		10	0-1	0-0	1-2	0	0	2	0	1	1
at NSU	12/21		5	0-0	0-0	0-0	0	0	2	0	0	0
GW	12/28		3	0-0	0-0	0-0	0	0	0	0	0	0
at Hof	1/4			DNP - COACH'S DECISION								
at NU	1/6		8	0-1	0-1	1-2	0	0	1	0	0	1
UNCW	1/11			DNP - COACH'S DECISION								
COFC	1/13			DNP - COACH'S DECISION								
ELON	1/20			DNP - COACH'S DECISION								

#### >> UNDERWOOD'S CAREER STATISTICS

Season	GP	GS	Min/Avg	FG-FGA	Pct	3pt-Att	Pct	FT-FTA	Pct	Off	Def	Reb	Avg	PF	FO	A	TO	Blk	S	TP	Avg
2017-18	27	0	162/6.0	6-30	.200	3-15	.200	14-22	.636	2	14	16	0.6	10	0	8	21	0	2	29	1.1
2018-19	10	0	60/6.0	4-10	.400	0-3	.000	2-4	.500	1	0	1	0.1	1	0	1	6	1	1	10	1.0
<b>CAREER</b>	<b>37</b>	<b>0</b>	<b>222/6.0</b>	<b>10-40</b>	<b>.250</b>	<b>3-18</b>	<b>.167</b>	<b>16-26</b>	<b>.615</b>	<b>3</b>	<b>14</b>	<b>17</b>	<b>0.5</b>	<b>11</b>	<b>0</b>	<b>9</b>	<b>27</b>	<b>1</b>	<b>13</b>	<b>39</b>	<b>1.1</b>



# #2 BIANCA BOGGS

## SENIOR - GUARD

### WALDORF, MD. - ST. MARY'S RYKEN

#### >> BOGGS' CAREER HIGHS

##### MINUTES

Season 39 (2x) last time vs. CofC, 1/13/19  
Career 41 at East Carolina, 11/21/17

##### POINTS

Season 26 (2x) last time vs. GW, 12/28/18  
Career 33 at St. Francis (Pa.), 12/2/17

##### REBOUNDS

Season 11 vs. East Carolina, 11/27/18  
Career 11 (2x) last time at ECU, 11/27/18

##### FIELD GOALS

Season 10 (2x) last time vs. GW, 12/28/18  
Career 12 at St. Francis (Pa.), 12/2/17

##### 3-POINT FIELD GOALS

Season 4 (2x) last time vs. CofC, 1/13/19  
Career 4 (4x) last time vs. CofC, 1/13/19

##### FREE THROWS

Season 7(2x) last time vs. UNCW, 1/11/19  
Career 8 (2x) last time vs. UD, 2/23/18

##### ASSISTS

Season 7 (2x) last time at DC, 11/24/18  
Career 8 at Delaware, 2/9/18

##### STEALS

Season 6 at Hartford, 11/30/18  
Career 7 vs. Charleston, 1/26/18

##### BLOCKS

Season 3 vs. GW, 12/28/18  
Career 4 vs. Hofstra, 1/28/18

##### MISCELLANEOUS

Career in Double Figures 56  
2018-19 in Double Figures 14

#### >> 2018-19 GAME-BY-GAME

Opp	Date	GS	Min	FG-A	3FG-A	FT-A	Reb.	A	TO	BLK	STL	PTS
VCU	11/6	*	34	6-16	1-3	2-3	6	4	3	1	5	16
HOW	11/12	*	35	10-22	1-5	5-5	9	7	4	0	1	26
at Loy	11/17	*	35	5-9	2-4	2-2	5	3	1	0	0	14
at DC	11/24	*	36	6-12	1-3	5-5	10	7	9	2	3	18
ECU	11/27	*	37	4-11	0-3	1-2	11	5	6	1	1	9
at Hart	11/30	*	39	3-15	1-5	5-6	6	2	4	0	6	12
at Fair	12/2	*	37	8-12	2-4	4-8	5	2	7	0	3	22
UOFR	12/5	*	32	2-7	0-0	1-2	1	6	3	2	2	8
at ODU	12/8	*	24	7-15	0-3	3-3	3	2	2	0	3	17
at NSU	12/21	*	33	4-10	0-2	2-5	8	4	6	1	4	10
GW	12/28	*	34	10-16	3-5	3-3	10	3	3	3	2	26
at Hof	1/4	*	39	7-14	1-4	7-7	10	3	6	1	0	22
at NU	1/6	*	25	6-15	4-7	5-6	6	4	2	0	3	21
UNCW	1/11	*	36	8-16	2-5	7-9	6	2	2	2	2	25
COFC	1/13	*	39	6-16	4-8	2-8	8	4	5	0	2	18
ELON	1/20	*	27	4-8	1-2	4-6	3	3	1	0	0	13

#### >> BOGGS' CAREER STATISTICS

Season	GP	GS	Min/Avg	FG-FGA	Pct	3pt-Att	Pct	FT-FTA	Pct	Off	Def	Reb	Avg	PF	FO	A	TO	Blk	S	TP	Avg
2015-16	30	24	802/26.7	68-233	.292	17-56	.304	70-102	.686	38	57	95	3.2	81	5	45	55	10	56	223	7.4
2016-17	31	26	734/23.7	82-214	.383	22-74	.297	60-76	.789	44	65	109	3.5	60	0	60	76	17	54	246	7.9
2017-18	30	30	907/30.2	156-373	.418	41-129	.318	103-139	.741	46	91	137	4.6	85	1	88	111	24	65	456	15.2
2018-19	16	16	544/34.0	96-217	.442	24-68	.353	60-82	.732	20	87	107	6.7	40	2	61	64	13	37	276	17.3
<b>CAREER</b>	<b>107</b>	<b>96</b>	<b>2987/27.9</b>	<b>402-1037</b>	<b>.388</b>	<b>104-327</b>	<b>.318</b>	<b>293-399</b>	<b>.734</b>	<b>148</b>	<b>300</b>	<b>448</b>	<b>4.2</b>	<b>256</b>	<b>8</b>	<b>254</b>	<b>306</b>	<b>64</b>	<b>212</b>	<b>1201</b>	<b>11.2</b>





# #3 ASHLEY TAYLOR

## JUNIOR - GUARD

CHARLOTTESVILLE, VA. - ST. ANNE'S-BELFIELD

### >> TAYLOR'S CAREER HIGHS

#### MINUTES

Season	6	vs. GW, 12/28/18
Career	9	vs. USC Upstate, 12/5/17

#### POINTS

Season	1	vs. GW, 12/28/18
Career	3	vs. USC Upstate, 12/5/17

#### REBOUNDS

Season	-	-
Career	2	vs. Loyola, 11/25/17

#### FIELD GOALS

Season	-	-
Career	1	(2x) last time at Elon, 3/1/18

#### 3-POINT FIELD GOALS

Season	-	-
Career	1	vs. USC Upstate, 12/5/17

#### FREE THROWS

Season	1	vs. GW, 12/28/18
Career	1	vs. GW, 12/28/18

#### ASSISTS

Season	-	-
Career	1	(4x) last time at CofC, 12/29/17

#### STEALS

Season	-	-
Career	1	vs. Davidson, 11/27/17

#### BLOCKS

Season	-	-
Career	-	-

#### MISCELLANEOUS

Career in Double Figures	0
2018-19 in Double Figures	0

### >> 2018-19 GAME-BY-GAME

Opp	Date	GS	Min	FG-A	3FG-A	FT-A	Reb.	A	TO	BLK	STL	Pts
VCU	11/6			DNP	-	COACH'S DECISION						
HOW	11/12			DNP	-	COACH'S DECISION						
at Loy	11/17	1	0-0	0-0	0-0	0	0	0	0	0	0	0
at DC	11/24			DNP	-	COACH'S DECISION						
ECU	11/27			DNP	-	COACH'S DECISION						
at Hart	11/30			DNP	-	COACH'S DECISION						
at Fair	12/2			DNP	-	COACH'S DECISION						
UOFR	12/5			DNP	-	COACH'S DECISION						
at ODU	12/8	1	0-1	0-1	0-0	0	0	0	0	0	0	0
at NSU	12/21			DNP	-	COACH'S DECISION						
GW	12/28	6	0-3	0-2	1-2	0	0	0	0	0	0	1
at Hof	1/4			DNP	-	COACH'S DECISION						
at NU	1/6			DNP	-	COACH'S DECISION						
UNCW	1/11			DNP	-	COACH'S DECISION						
COFC	1/13			DNP	-	COACH'S DECISION						
ELON	1/20			DNP	-	COACH'S DECISION						

### >> TAYLOR'S CAREER STATISTICS

Season	GP	GS	Min/Avg	FG-FGA	Pct	3pt-Att	Pct	FT-FTA	Pct	Off	Def	Reb	Avg	PF	FO	A	TO	Blk	S	TP	Avg
2016-17	7	0	22/3.1	0-6	.000	0-4	.000	0-0	.000	1	2	3	0.4	0	0	2	1	0	0	0	0.0
2017-18	13	0	32/2.5	2-9	.222	1-3	.333	0-0	.000	0	7	7	0.5	1	0	2	4	0	1	5	0.4
2018-19	3	0	8/2.7	0-4	.000	0-3	.000	1-2	.500	0	0	0	0.0	0	0	0	0	0	0	1	0.3
<b>CAREER</b>	<b>24</b>	<b>0</b>	<b>62/2.7</b>	<b>2-20</b>	<b>.105</b>	<b>1-10</b>	<b>.100</b>	<b>1-2</b>	<b>.500</b>	<b>1</b>	<b>9</b>	<b>10</b>	<b>0.4</b>	<b>1</b>	<b>0</b>	<b>4</b>	<b>5</b>	<b>0</b>	<b>1</b>	<b>6</b>	<b>0.3</b>



# #5 MISHA JONES

## SENIOR - GUARD/FORWARD

MANASSAS PARK, VA. - BATTLEFIELD

### >> JONES' CAREER HIGHS

#### MINUTES

Season	24	vs. UNCW, 1/11/19
Career	27	vs. Delaware, 2/23/18

#### POINTS

Season	9	(2x) last vs. UNCW, 1/11/19
Career	9	(2x) last vs. UNCW, 1/11/19

#### REBOUNDS

Season	4	(2x) last time at ODU, 12/8/18
Career	5	(2x) last time vs. UD, 2/23/18

#### FIELD GOALS

Season	3	(2x) last vs. UNCW, 1/11/19
Career	3	(2x) last vs. UNCW, 1/11/19

#### 3-POINT FIELD GOALS

Season	3	vs. UNCW, 1/11/19
Career	3	vs. UNCW, 1/11/19

#### FREE THROWS

Season	2	(2x) last time vs. Elon, 1/20/19
Career	3	(2x) last time vs. USC Upstate, 12/5/17

#### ASSISTS

Season	4	at Old Dominion, 12/8/18
Career	4	(3x) last time at ODU, 12/8/18

#### STEALS

Season	2	at Hofstra, 1/4/19
Career	2	(2x) last time at Hofstra, 1/4/19

#### BLOCKS

Season	1	(3x) last time vs. Elon, 1/20/19
Career	1	(4x) last time vs. Elon, 1/20/19

#### MISCELLANEOUS

Career in Double Figures	0
2018-19 in Double Figures	0

### >> 2018-19 GAME-BY-GAME

Opp	Date	GS	Min	FG-A	3FG-A	FT-A	Reb.	A	TO	BLK	STL	Pts
VCU	11/6	4	1-1	1-1	1-2	4	0	0	0	0	4	
HOW	11/12	14	3-5	2-4	1-1	3	2	2	1	0	9	
at Loy	11/17	13	2-4	0-2	1-2	2	1	0	0	0	5	
at DC	11/24	11	1-2	1-2	0-0	1	3	1	1	0	3	
ECU	11/27	9	0-3	0-3	0-0	2	0	0	0	0	0	
at Hart	11/30	12	1-2	1-1	0-0	4	1	0	0	0	3	
at Fair	12/2	8	0-1	0-1	0-0	1	0	0	0	0	0	
UOFR	12/5	6	0-0	0-0	0-0	1	0	1	0	0	0	
at ODU	12/8	13	2-5	0-1	0-0	4	4	1	0	0	4	
at NSU	12/21	8	0-1	0-1	0-0	0	0	1	0	1	0	
GW	12/28	* 12	1-2	0-0	2-2	1	0	1	0	0	4	
at Hof	1/4	* 6	1-1	1-1	0-0	1	1	0	0	0	3	
at NU	1/6	* 20	2-6	1-3	1-2	3	2	0	0	1	6	
UNCW	1/11	24	3-5	3-5	0-0	2	3	3	1	0	9	
COFC	1/13	19	2-5	2-4	0-0	2	2	1	0	0	6	
ELON	1/20	15	2-3	2-2	2-2	2	2	0	2	0	8	

### >> JONES' CAREER STATISTICS

Season	GP	GS	Min/Avg	FG-FGA	Pct	3pt-Att	Pct	FT-FTA	Pct	Off	Def	Reb	Avg	PF	FO	A	TO	Blk	S	TP	Avg
2015-16	27	0	180/6.7	12-36	.333	5-20	.250	7-10	.700	1	16	17	0.6	15	0	8	9	0	4	36	1.3
2016-17																					
2017-18	28	0	201/7.2	13-41	.317	7-26	.269	10-11	.909	6	26	32	1.1	29	0	15	17	1	7	43	1.5
2018-19	16	3	195/12.2	21-46	.457	14-31	.452	8-10	.800	11	18	29	1.8	29	0	21	11	3	3	64	4.0
<b>CAREER</b>	<b>71</b>	<b>3</b>	<b>576/8.1</b>	<b>46-123</b>	<b>.374</b>	<b>26-77</b>	<b>.338</b>	<b>25-31</b>	<b>.806</b>	<b>18</b>	<b>60</b>	<b>78</b>	<b>1.1</b>	<b>73</b>	<b>0</b>	<b>44</b>	<b>37</b>	<b>4</b>	<b>14</b>	<b>143</b>	<b>2.0</b>



# #10 EVA HODGSON

## FRESHMAN - GUARD

### RINDGE, N.H. - NEW HAMPTON SCHOOL

#### >> HODGSON'S CAREER HIGHS

##### MINUTES

Season	39	at Hofstra, 1/4/19
Career	39	at Hofstra, 1/4/19

##### POINTS

Season	18	at Hofstra, 1/4/19
Career	18	at Hofstra, 1/4/19

##### REBOUNDS

Season	5	(2x) last time at Fair., 12/2/18
Career	5	(2x) last time at Fair., 12/2/18

##### FIELD GOALS

Season	6	at Hofstra, 1/4/19
Career	6	at Hofstra, 1/4/19

##### 3-POINT FIELD GOALS

Season	3	vs. Northeastern, 1/6/19
Career	3	vs. Northeastern, 1/6/19

##### FREE THROWS

Season	5	(3x) last time at NU, 1/6/19
Career	5	(3x) last time at NU, 1/6/19

##### ASSISTS

Season	6	(3x) last time vs. Elon, 1/20/19
Career	6	(3x) last time vs. Elon, 1/20/19

##### STEALS

Season	4	at Fairfield, 12/2/18
Career	4	at Fairfield, 12/2/18

##### BLOCKS

Season	2	vs. UNCW, 1/11/19
Career	2	vs. UNCW, 1/11/19

##### MISCELLANEOUS

Career in Double Figures	6
2018-19 in Double Figures	6

#### > 2018-19 GAME-BY-GAME

Opp	Date	GS	Min	FG-A	3FG-A	FT-A	Reb.	A	TO	BLK	STL	Pts
VCU	11/6	*	28	4-8	0-2	0-0	0	3	2	0	2	8
HOW	11/12	*	35	2-6	1-3	1-2	5	4	4	0	2	6
at Loy	11/17	*	30	2-7	0-1	1-1	2	5	2	1	1	5
at DC	11/24	*	30	0-4	0-1	0-0	3	2	4	0	0	0
ECU	11/27	*	26	4-4	2-2	3-4	1	0	2	1	0	13
at Hart	11/30	*	34	4-12	1-5	5-7	2	2	4	0	3	14
at Fair	12/2	*	32	0-4	0-2	3-4	5	4	4	0	4	3
UOFR	12/5	*	32	5-11	1-4	4-4	4	6	3	1	2	15
at ODU	12/8	*	22	2-5	0-2	0-2	1	3	1	0	0	4
at NSU	12/21	*	14	2-3	1-1	0-0	1	2	2	0	0	5
GW	12/28	*	32	4-7	2-3	1-1	4	6	2	1	0	11
at Hof	1/4	*	39	6-14	1-3	5-6	1	2	3	1	2	18
at NU	1/6	*	34	4-4	3-3	5-6	4	2	2	0	2	16
UNCW	1/11	*	27	2-6	2-5	0-0	0	1	2	1	2	6
COFC	1/13	*	17	1-4	0-1	0-0	1	1	5	1	0	2
ELON	1/20	*	37	2-7	0-2	0-0	4	6	2	0	2	4

#### >> HODGSON'S CAREER STATISTICS

Season	GP	GS	Min/Avg	FG-FGA	Pct	3pt-Att	Pct	FT-FTA	Pct	Off	Def	Reb	Avg	PF	FO	A	TO	Blk	S	TP	Avg
2018-19	16	16	467/29.2	44-106	.415	14-40	.350	28-38	.737	12	26	39	2.4	46	1	49	43	6	23	130	8.1
CAREER	16	16	467/29.2	44-106	.415	14-40	.350	28-38	.737	12	26	39	2.4	46	1	49	43	6	23	130	8.1



# #11 NYLA POLLARD

## SOPHOMORE - GUARD

### VIRGINIA BEACH, VA. - PRINCESS ANNE

#### >> POLLARD'S CAREER HIGHS

##### MINUTES

Season	38	at Hofstra, 1/4/19
Career	38	at Hofstra, 1/4/19

##### POINTS

Season	10	vs. East Carolina, 11/27/18
Career	14	vs. USC Upstate, 12/5/17

##### REBOUNDS

Season	12	vs. East Carolina, 11/27/18
Career	12	vs. East Carolina, 11/27/18

##### FIELD GOALS

Season	4	(2x) last time vs. CofC, 1/19/13
Career	6	vs. USC Upstate, 12/5/17

##### 3-POINT FIELD GOALS

Season	2	(2x) last vs. UNCW, 1/11/19
Career	2	(6x) last vs. UNCW, 1/11/19

##### FREE THROWS

Season	6	vs. East Carolina, 11/27/18
Career	6	vs. East Carolina, 11/27/18

##### ASSISTS

Season	6	vs. UNCW, 1/11/19
Career	6	vs. UNCW, 1/11/19

##### STEALS

Season	3	vs. Richmond, 12/5/18
Career	4	vs. Davidson, 11/27/17

##### BLOCKS

Season	1	(3x) last time vs. Elon, 1/20/19
Career	1	(7x) last time vs. Elon, 1/20/19

##### MISCELLANEOUS

Career in Double Figures	4
2018-19 in Double Figures	1

#### >> 2018-19 GAME-BY-GAME

Opp	Date	GS	Min	FG-A	3FG-A	FT-A	Reb.	A	TO	BLK	STL	Pts
VCU	11/6		19	2-4	1-1	0-1	1	0	0	0	1	5
HOW	11/12		34	3-7	2-3	0-0	3	2	2	0	2	8
at Loy	11/17		23	4-6	1-2	0-0	2	4	1	0	1	9
at DC	11/24		25	1-4	0-2	0-1	1	1	2	0	0	2
ECU	11/27	*	35	2-9	0-3	6-8	12	2	4	1	0	10
at Hart	11/30	*	25	0-6	0-3	0-0	3	2	2	0	0	0
at Fair	12/2	*	27	0-3	0-0	2-4	3	3	3	0	2	2
UOFR	12/5	*	35	2-5	1-4	0-0	2	2	3	0	3	5
at ODU	12/8	*	20	0-2	0-1	2-2	0	4	2	0	2	2
at NSU	12/21	*	37	2-6	0-2	2-2	2	4	0	0	1	6
GW	12/28	*	33	1-7	0-2	0-0	1	3	2	0	1	2
at Hof	1/4	*	38	1-4	1-1	1-2	7	3	1	0	2	4
at NU	1/6	*	13	0-2	0-1	0-0	0	0	0	0	0	0
UNCW	1/11	*	36	2-4	2-3	3-4	7	6	3	0	0	9
COFC	1/13	*	37	4-9	0-3	1-2	2	4	0	1	1	9
ELON	1/20	*	33	1-6	0-3	0-0	1	2	3	1	0	2

#### >> POLLARD'S CAREER STATISTICS

Season	GP	GS	Min/Avg	FG-FGA	Pct	3pt-Att	Pct	FT-FTA	Pct	Off	Def	Reb	Avg	PF	FO	A	TO	Blk	S	TP	Avg
2017-18	30	27	658/21.9	44-121	.364	14-48	.292	20-27	.741	22	31	53	1.8	71	3	46	40	4	15	122	4.1
2018-19	16	12	472/29.5	25-84	.298	8-34	.235	17-26	.654	16	31	47	2.9	39	2	43	28	3	16	75	4.7
CAREER	46	39	1130/24.6	69-205	.337	22-82	.268	37-53	.698	38	62	100	2.2	110	5	89	68	7	31	197	4.3



# #12 HARPER BIRDSONG

## SOPHOMORE - GUARD

SUFFOLK, VA. - NANSEMOND SUFFOLK  
(George Washington)

### >> BIRDSONG'S CAREER HIGHS

#### MINUTES

Season	30	at Old Dominion, 12/8/18
Career	30	at Old Dominion, 12/8/18

#### POINTS

Season	18	at Old Dominion, 12/8/18
Career	18	at Old Dominion, 12/8/18

#### REBOUNDS

Season	5	(3x) last time vs. CofC, 1/13/19
Career	5	(3x) last time vs. CofC, 1/13/19

#### FIELD GOALS

Season	6	(3x) last time at NU, 1/6/19
Career	6	(3x) last time at NU, 1/6/19

#### 3-POINT FIELD GOALS

Season	4	vs. GW, 12/28/18
Career	4	vs. GW, 12/28/18

#### FREE THROWS

Season	4	(2x) last vs. UNCW, 1/11/19
Career	4	(2x) last vs. UNCW, 1/11/19

#### ASSISTS

Season	4	at Old Dominion, 12/8/18
Career	4	at Old Dominion, 12/8/18

#### STEALS

Season	3	vs. GW, 12/28/18
Career	3	vs. GW, 12/28/18

#### BLOCKS

Season	2	vs. UNCW, 1/11/19
Career	2	vs. UNCW, 1/11/19

#### MISCELLANEOUS

Career in Double Figures	10
2018-19 in Double Figures	10

### >> 2018-19 GAME-BY-GAME

Opp	Date	GS	Min	FG-A	3FG-A	FT-A	Reb.	A	TO	BLK	STL	Pts
VCU	11/6	*	12	0-4	0-2	0-0	0	0	4	0	0	0
HOW	11/12	*	16	5-10	1-4	1-2	2	1	1	1	1	12
at Loy	11/17	*	14	3-3	3-3	0-2	0	0	2	0	0	9
at DC	11/24	*	20	4-10	2-6	0-0	0	2	1	0	1	10
ECU	11/27		19	3-9	1-3	3-3	1	1	3	1	1	10
at Hart	11/30		19	2-5	2-5	2-5	1	1	2	0	0	8
at Fair	12/2		25	3-8	3-5	2-2	0	0	1	0	0	11
UOFR	12/5		18	5-7	3-5	0-0	2	2	1	0	1	13
at ODU	12/8		30	6-18	2-8	4-4	2	4	3	0	1	18
at NSU	12/21		28	5-11	3-7	1-1	5	1	4	0	1	14
GW	12/28		23	6-10	4-6	0-0	2	2	1	0	3	16
at Hof	1/4		23	2-7	2-5	3-4	1	0	22	0	0	9
at NU	1/6		29	6-15	2-7	2-4	5	2	1	0	1	16
UNCW	1/11		21	0-10	0-5	4-4	2	1	0	2	1	4
COFC	1/13		23	3-11	2-5	0-0	4	0	2	0	0	8
ELON	1/20		17	5-11	3-6	0-0	3	2	3	1	0	13

### >> BIRDSONG'S CAREER STATISTICS

Season	GP	GS	Min/Avg	FG-FGA	Pct	3pt-Att	Pct	FT-FTA	Pct	Off	Def	Reb	Avg	PF	FO	A	TO	Blk	S	TP	Avg
2016-17	8	0	39/4.9	4-13	.308	2-8	.250	1-1	1.000	0	2	2	0.3	2	0	2	1	0	1	11	1.4
2017-18																					
2018-19	16	4	338/22.1	58-139	.389	33-82	.402	22-31	.710	10	21	31	1.9	33	1	19	31	5	12	171	10.7
CAREER	24	4	377/15.7	62-162	.383	35-90	.389	23-32	.719	10	23	33	1.4	35	1	21	32	5	13	182	7.6



# #15 EMMA KRAUSE

## FRESHMAN - FORWARD

PLANTATION, FLA. - CARDINAL GIBBONS

### >> KRAUSE'S CAREER HIGHS

#### MINUTES

Season	22	at Hartford, 11/30/18
Career	22	at Hartford, 11/30/18

#### POINTS

Season	14	vs. Howard, 11/12/18
Career	14	vs. Howard, 11/12/18

#### REBOUNDS

Season	5	(2x) last time at ODU, 12/8/18
Career	5	(2x) last time at ODU, 12/8/18

#### FIELD GOALS

Season	5	vs. Howard, 11/12/18
Career	5	vs. Howard, 11/12/18

#### 3-POINT FIELD GOALS

Season	4	vs. Howard, 11/12/18
Career	4	vs. Howard, 11/12/18

#### FREE THROWS

Season	2	at Fairfield, 12/2/18
Career	2	at Fairfield, 12/2/18

#### ASSISTS

Season	3	at Loyola, 11/14/18
Career	3	at Loyola, 11/14/18

#### STEALS

Season	2	at Loyola, 11/14/18
Career	2	at Loyola, 11/14/18

#### BLOCKS

Season	2	(2x) last time vs. GW, 12/28/18
Career	2	(2x) last time vs. GW, 12/28/18

#### MISCELLANEOUS

Career in Double Figures	1
2018-19 in Double Figures	1

### >> 2018-19 GAME-BY-GAME

Opp	Date	GS	Min	FG-A	3FG-A	FT-A	Reb.	A	TO	BLK	STL	Pts
VCU	11/6		16	1-5	1-4	1-2	4	1	0	1	0	4
HOW	11/12		13	5-9	4-7	0-2	2	0	0	2	0	14
at Loy	11/17		18	2-2	1-1	0-0	5	3	1	0	2	5
at DC	11/24		16	3-5	3-4	0-0	3	0	0	0	0	9
ECU	11/27		15	2-6	2-4	0-0	4	2	0	0	0	6
at Hart	11/30		22	0-6	0-4	2-2	1	0	1	1	1	2
at Fair	12/2		11	0-3	0-2	2-2	4	0	1	0	0	2
UOFR	12/5		8	1-2	1-2	0-0	1	0	1	0	0	3
at ODU	12/8		21	1-5	0-3	0-0	5	1	0	1	1	2
at NSU	12/21		21	3-7	1-5	0-2	1	2	0	0	0	7
GW	12/28		14	1-5	1-4	0-0	2	0	0	2	0	3
at Hof	1/4		13	0-0	0-0	0-0	1	1	0	0	0	0
at NU	1/6		18	1-5	0-4	1-1	1	1	2	0	0	3
UNCW	1/11	*	12	0-4	0-4	0-0	0	0	0	0	0	0
COFC	1/13	*	7	0-1	0-0	0-0	0	0	0	1	0	0
ELON	1/20		10	3-6	3-5	0-0	0	0	0	1	0	9

### >> KRAUSE'S CAREER STATISTICS

Season	GP	GS	Min/Avg	FG-FGA	Pct	3pt-Att	Pct	FT-FTA	Pct	Off	Def	Reb	Avg	PF	FO	A	TO	Blk	S	TP	Avg
2018-19	16	2	235/14.7	23-71	.324	17-53	.321	6-11	.545	9	25	34	2.1	24	0	11	6	9	4	69	4.3
CAREER	16	2	235/14.7	23-71	.324	17-53	.321	6-11	.545	9	25	34	2.1	24	0	11	6	9	4	69	4.3





# #20 CHANDLER SMITH

SENIOR - CENTER

PORT TOBACCO, MD. - ST. MARY'S RYKEN

## >> SMITH'S CAREER HIGHS

### MINUTES

Season 8 (2x) last time vs. ECU, 11/27/18  
Career 18 at Delaware, 1/26/16

### POINTS

Season 1 vs. Howard, 11/12/18  
Career 4 (4x) last time at SFU 12/2/17

### REBOUNDS

Season 3 vs. East Carolina, 11/27/18  
Career 5 vs. Hofstra, 2/7/17

### FIELD GOALS

Season -  
Career 2 (3x) last time at SFU, 12/2/17

### 3-POINT FIELD GOALS

Season -  
Career -

### FREE THROWS

Season 1 vs. Howard, 11/12/18  
Career 4 vs. Hofstra, 2/7/17

### ASSISTS

Season 1 vs. Richmond, 12/5/18  
Career 1 (3x) last time vs. UofR, 12/5/18

### STEALS

Season -  
Career 2 (2x) last time vs. Mount St. Mary's, 12/18/16

### BLOCKS

Season 1 (2x) last time at Loyola 11/17/18  
Career 3 vs. Mount St. Mary's, 12/18/16

### MISCELLANEOUS

Career in Double Figures 0  
2017-18 in Double Figures 0

## >> 2018-19 GAME-BY-GAME

Opp	Date	GS	Min	FG-A	3FG-A	FT-A	Reb.	A	TO	BLK	STL	Pts
VCU	11/6	8	0-0	0-0	0-0	2	0	0	0	0	0	0
HOW	11/12	4	0-0	0-0	1-2	2	0	1	1	0	1	0
at Loy	11/17	4	0-1	0-0	0-0	0	0	0	1	0	0	0
at DC	11/24		DNP	-	COACH'S DECISION							
ECU	11/27	8	0-0	0-0	0-0	3	0	2	0	0	0	0
at Hart	11/30		DNP	-	COACH'S DECISION							
at Fair	12/2		DNP	-	COACH'S DECISION							
UofR	12/5	5	0-0	0-0	0-0	1	1	0	0	0	0	0
at ODU	12/8		DNP	-	COACH'S DECISION							
at NSU	12/21	2	0-0	0-0	0-0	0	0	0	0	0	0	0
GW	12/28	1	0-0	0-0	0-0	0	0	1	0	0	0	0
at Hof	1/4		DNP	-	COACH'S DECISION							
at NU	1/6		DNP	-	COACH'S DECISION							
UNCW	1/11		DNP	-	COACH'S DECISION							
COFC	1/13		DNP	-	COACH'S DECISION							
ELON	1/20		DNP	-	COACH'S DECISION							

## >> SMITH'S CAREER STATISTICS

Season	GP	GS	Min/Avg	FG-FGA	Pct	3pt-Att	Pct	FT-FTA	Pct	Off	Def	Reb	Avg	PF	FO	A	TO	Blk	S	TP	Avg
2015-16	19	0	97/5.1	3-12	.250	0-0	.000	0-6	.000	2	10	12	0.6	13	0	0	5	4	3	6	0.3
2016-17	13	0	77/5.9	6-21	.286	0-0	.000	7-8	.875	2	22	24	1.8	16	1	1	7	11	3	19	1.5
2017-18	21	0	86/4.1	5-17	.294	0-0	.000	0-0	.000	4	8	12	0.6	15	0	3	8	9	1	10	0.5
2018-19	7	0	32/4.6	0-1	.000	0-0	.000	1-2	.500	1	7	8	1.1	4	0	1	4	2	0	1	0.1
<b>CAREER</b>	<b>60</b>	<b>0</b>	<b>292/4.9</b>	<b>14-51</b>	<b>.275</b>	<b>0-0</b>	<b>.000</b>	<b>8-16</b>	<b>.500</b>	<b>9</b>	<b>47</b>	<b>56</b>	<b>0.9</b>	<b>48</b>	<b>1</b>	<b>5</b>	<b>24</b>	<b>26</b>	<b>7</b>	<b>36</b>	<b>0.6</b>



# #21 BAILEY EICHNER

SOPHOMORE - GUARD/FORWARD

CUDAHY, WISC. - CUDAHY

## >> EICHNER'S CAREER HIGHS

### MINUTES

Season 13 vs. GW, 12/28/18  
Career 13 vs. GW, 12/28/18

### POINTS

Season 2 at Old Dominion, 12/8/18  
Career 4 vs. James Madison, 2/2/18

### REBOUNDS

Season 6 at Old Dominion, 12/8/18  
Career 6 at Old Dominion, 12/8/18

### FIELD GOALS

Season 1 at Old Dominion, 12/8/18  
Career 1 (3x) last time at ODU, 12/8/18

### 3-POINT FIELD GOALS

Season -  
Career -

### FREE THROWS

Season 1 vs. VCU, 11/6/18  
Career 2 vs. James Madison, 2/2/18

### ASSISTS

Season 1 (2x) last time at Hofstra, 1/4/19  
Career 2 at Hofstra, 1/19/18

### STEALS

Season 2 at Old Dominion, 12/8/18  
Career 2 at Old Dominion, 12/8/18

### BLOCKS

Season 1 vs. GW, 12/28/18  
Career 1 (2x) last time vs. GW, 12/28/18

### MISCELLANEOUS

Career in Double Figures 0  
2017-18 in Double Figures 0

## >> 2018-19 GAME-BY-GAME

Opp	Date	GS	Min	FG-A	3FG-A	FT-A	Reb.	A	TO	BLK	STL	Pts
VCU	11/6	11	0-2	0-1	1-2	1	0	1	0	0	1	0
HOW	11/12	1	0-0	0-0	0-0	0	0	1	0	0	0	0
at Loy	11/17	1	0-0	0-0	0-0	0	0	0	0	0	0	0
at DC	11/24		DNP	-	COACH'S DECISION							
ECU	11/26		DNP	-	COACH'S DECISION							
at Hart	11/30		DNP	-	COACH'S DECISION							
at Fair	12/2		DNP	-	COACH'S DECISION							
UofR	12/5		DNP	-	COACH'S DECISION							
at ODU	12/8	11	1-2	0-0	0-0	6	0	0	0	0	2	0
at NSU	12/21	7	0-2	0-1	0-0	2	0	0	0	1	0	0
GW	12/28	13	0-1	0-1	0-0	2	1	0	1	0	0	0
at Hof	1/4	8	0-0	0-0	0-0	1	1	0	0	0	0	0
at NU	1/6	6	0-1	0-0	0-0	1	0	0	0	0	0	0
UNCW	1/11	3	0-0	0-0	0-0	0	0	0	0	0	0	0
COFC	1/13		DNP	-	COACH'S DECISION							
ELON	1/20	1	0-0	0-0	0-0	0	0	1	0	0	0	0

## >> EICHNER'S CAREER STATISTICS

Season	GP	GS	Min/Avg	FG-FGA	Pct	3pt-Att	Pct	FT-FTA	Pct	Off	Def	Reb	Avg	PF	FO	A	TO	Blk	S	TP	Avg
2017-18	16	0	46/2.9	2-6	.333	0-2	.000	4-8	.500	6	9	15	0.9	14	0	2	7	2	1	8	0.5
2018-19	10	0	61/6.1	1-8	.125	0-3	.000	1-2	.500	4	9	13	1.3	8	0	2	3	1	3	3	0.3
<b>CAREER</b>	<b>26</b>	<b>0</b>	<b>107/4.1</b>	<b>3-14</b>	<b>.214</b>	<b>0-5</b>	<b>.000</b>	<b>5-10</b>	<b>.500</b>	<b>10</b>	<b>18</b>	<b>28</b>	<b>1.1</b>	<b>22</b>	<b>0</b>	<b>4</b>	<b>10</b>	<b>3</b>	<b>4</b>	<b>11</b>	<b>0.4</b>



# #25 GABBY ROGERS

## SOPHOMORE - CENTER

### DALLAS, TEXAS - BISHOP LYNCH

#### >> ROGERS' CAREER HIGHS

##### MINUTES

Season	30	at Fairfield, 12/2/18
Career	30	at Fairfield, 12/2/18

##### POINTS

Season	10	at Davidson, 11/24/18
Career	10	at Davidson, 11/24/18

##### REBOUNDS

Season	5	(3x) last time vs. CofC, 1/13/19
Career	5	(3x) last time vs. CofC, 1/13/19

##### FIELD GOALS

Season	4	(3x) last time at Fair., 12/2/18
Career	4	(4x) last time at Fair., 12/2/18

##### 3-POINT FIELD GOALS

Season	-	-
Career	-	-

##### FREE THROWS

Season	2	(3x) last time at NU, 1/6/19
Career	2	(6x) last time at NU, 1/6/19

##### ASSISTS

Season	1	(5x) last time vs. CofC, 1/13/19
Career	1	(12x) last time vs. CofC, 1/13/19

##### STEALS

Season	3	(2x) last time at Hofstra, 1/4/19
Career	3	(3x) last time at Hofstra, 1/4/19

##### BLOCKS

Season	2	vs. Elon, 1/20/19
Career	2	(3x) last time vs. Elon, 1/20/19

##### MISCELLANEOUS

Career in Double Figures	1
2018-19 in Double Figures	1

#### >> 2018-19 GAME-BY-GAME

Opp	Date	GS	Min	FG-A	3FG-A	FT-A	Reb.	A	TO	BLK	STL	PTS
VCU	11/6	*	18	1-2	0-0	2-2	1	0	2	0	0	4
HOW	11/12	*	19	1-2	0-0	0-0	3	0	2	1	0	2
at Loy	11/17	*	16	4-6	0-0	0-0	2	1	0	0	0	8
at DC	11/24	*	27	4-8	0-1	2-2	2	0	1	0	1	10
ECU	11/27	*	15	0-1	0-0	0-0	2	0	3	0	1	0
at Hart	11/30	*	18	1-2	0-0	0-0	1	0	0	1	3	2
at Fair	12/2	*	30	4-7	0-0	0-0	5	1	0	0	1	8
UOFR	12/5	*	29	2-7	0-0	1-2	5	0	1	0	0	5
at ODU	12/8	*	11	3-5	0-0	0-0	2	0	0	0	0	6
at NSU	12/21	*	10	1-3	0-0	0-0	3	0	0	0	0	2
GW	12/28	*	12	1-2	0-0	0-0	3	0	0	0	1	2
at Hof	1/4	*	21	2-3	0-0	0-0	2	1	0	0	3	4
at NU	1/6	*	17	0-2	0-0	2-2	1	1	1	0	0	2
UNCW	1/11	*	11	0-1	0-0	0-0	3	0	2	1	1	0
COFC	1/13	*	21	1-5	0-0	1-2	5	1	1	1	2	3
ELON	1/20	*	23	2-3	0-0	1-1	4	0	1	0	2	5

#### >> ROGERS' CAREER STATISTICS

Season	GP	GS	Min/Avg	FG-FGA	Pct	3pt-Att	Pct	FT-FTA	Pct	Off	Def	Reb	Avg	PF	FO	A	TO	Blk	S	TP	Avg
2017-18	29	0	263/9.1	24-47	.511	0-0	.000	9-13	.692	12	40	52	1.8	55	1	7	15	6	10	57	2.0
2018-19	16	14	301/18.8	27-59	.458	0-1	.000	9-11	.818	14	30	44	2.8	49	0	5	14	6	13	63	3.9
<b>CAREER</b>	<b>45</b>	<b>14</b>	<b>564/12.4</b>	<b>51-106</b>	<b>.481</b>	<b>0-1</b>	<b>.000</b>	<b>18-24</b>	<b>.750</b>	<b>26</b>	<b>70</b>	<b>96</b>	<b>2.1</b>	<b>104</b>	<b>1</b>	<b>12</b>	<b>29</b>	<b>12</b>	<b>23</b>	<b>120</b>	<b>2.7</b>



# #30 VICTORIA REYNOLDS

## JUNIOR - FORWARD

### FAIRFAX, VA./ARCHBISHOP SPALDING

#### >> REYNOLDS' CAREER HIGHS

##### MINUTES

Season	37	(3x) last time vs. Elon, 1/20/19
Career	40	(2x) last time vs. UNCW, 2/16/17

##### POINTS

Season	17	vs. UNCW, 1/11/19
Career	22	at St. Francis (Pa.), 12/2/17

##### REBOUNDS

Season	15	vs. East Carolina, 11/27/18
Career	18	vs. Charleston, 1/26/18

##### FIELD GOALS

Season	6	(2x) last vs. UNCW, 1/11/19
Career	9	vs. Northeastern, 2/11/18

##### 3-POINT FIELD GOALS

Season	2	(3x) last time vs. CofC, 1/13/19
Career	2	(5x) last time vs. CofC, 1/13/19

##### FREE THROWS

Season	6	(2x) last time at NSU, 12/21/18
Career	9	vs. Old Dominion, 12/17/17

##### ASSISTS

Season	7	vs. Charleston, 1/13/19
Career	8	at East Carolina, 11/21/17

##### STEALS

Season	4	vs. Charleston, 1/13/19
Career	7	vs. Hofstra, 1/28/18

##### BLOCKS

Season	3	at Norfolk State, 12/21/18
Career	3	(3x) last time vs. NSU, 12/21/18

##### MISCELLANEOUS

Career in Double Figures	29
2018-19 in Double Figures	10

#### >> 2018-19 GAME-BY-GAME

Opp	Date	GS	Min	FG-A	3FG-A	FT-A	Reb.	A	TO	BLK	STL	PTS
VCU	11/6	*	37	4-7	0-0	0-0	4	5	2	0	0	8
HOW	11/12	*	26	3-10	0-2	4-6	5	3	1	0	2	10
at Loy	11/17	*	33	4-10	0-0	2-2	5	2	7	0	0	10
at DC	11/24	*	29	6-8	0-0	1-1	3	2	2	0	1	13
ECU	11/27	*	35	4-6	1-1	6-6	15	4	6	2	1	15
at Hart	11/30	*	29	1-6	0-0	2-2	7	1	5	0	3	4
at Fair	12/2	*	30	4-8	0-0	4-6	4	1	3	0	3	12
UOFR	12/5	*	35	5-8	2-2	2-2	6	0	5	0	1	14
at ODU	12/8	*	37	4-10	1-4	4-4	6	2	5	2	1	13
at NSU	12/21	*	35	2-5	1-2	6-8	9	2	2	3	1	11
GW	12/28	*	15	3-7	2-2	0-0	5	2	0	0	0	8
at Hof	1/4	*	13	0-1	0-0	0-0	1	0	4	0	0	0
at NU	1/6	*	30	4-10	1-3	0-0	3	2	5	0	2	9
UNCW	1/11	*	31	6-9	1-2	4-5	7	0	4	2	1	17
COFC	1/13	*	36	3-8	2-2	0-0	10	7	4	1	4	8
ELON	1/20	*	37	3-6	0-1	5-8	6	3	0	2	1	11

#### >> REYNOLDS' CAREER STATISTICS

Season	GP	GS	Min/Avg	FG-FGA	Pct	3pt-Att	Pct	FT-FTA	Pct	Off	Def	Reb	Avg	PF	FO	A	TO	Blk	S	TP	Avg
2016-17	28	0	466/16.6	51-104	.490	5-12	.417	36-46	.783	44	45	89	3.2	42	0	21	30	5	33	143	5.1
2017-18	30	30	977/32.6	125-270	.463	8-34	.235	50-68	.735	65	147	212	7.1	77	1	60	69	22	71	308	10.3
2018-19	16	14	486/30.4	56-119	.471	11-22	.500	40-50	.800	13	86	99	6.2	39	2	36	55	11	22	163	10.2
<b>CAREER</b>	<b>74</b>	<b>43</b>	<b>1929/26.1</b>	<b>232-493</b>	<b>.471</b>	<b>24-68</b>	<b>.353</b>	<b>126-164</b>	<b>.768</b>	<b>122</b>	<b>278</b>	<b>400</b>	<b>5.4</b>	<b>158</b>	<b>3</b>	<b>117</b>	<b>154</b>	<b>38</b>	<b>126</b>	<b>614</b>	<b>8.3</b>



# #32 CAROLINE STOVER

FRESHMAN - CENTER

PLYMPTON, MASS. - CARDINAL SPELLMAN

## >> STOVER'S CAREER STATISTICS

<b>MINUTES</b>			<b>FREE THROWS</b>		
Season	1	at Loyola, 11/14/18	Season	-	
Career	1	at Loyola, 11/14/18	Career	-	
<b>POINTS</b>			<b>ASSISTS</b>		
Season	-		Season	-	
Career	-		Career	-	
<b>REBOUNDS</b>			<b>STEALS</b>		
Season	-		Season	-	
Career	-		Career	-	
<b>FIELD GOALS</b>			<b>BLOCKS</b>		
Season	-		Season	-	
Career	-		Career	-	
<b>3-POINT FIELD GOALS</b>			<b>MISCELLANEOUS</b>		
Season	-		Career in Double Figures		0
Career	-		2018-19 in Double Figures		0

## >> 2018-19 GAME-BY-GAME

Opp	Date	GS	Min	FG-A	3FG-A	FT-A	Reb.	A	TO	BLK	STL	Pts
VCU	11/6			DNP	-	COACH'S DECISION						
HOW	11/12			DNP	-	COACH'S DECISION						
at Loy	11/17	1		0-2	0-0	0-0	0	0	0	0	0	0
at DC	11/24			DNP	-	COACH'S DECISION						
ECU	11/27			DNP	-	COACH'S DECISION						
at Hart	11/30			DNP	-	COACH'S DECISION						
at Fair	12/2			DNP	-	COACH'S DECISION						
UOFR	12/5			DNP	-	COACH'S DECISION						
at ODU	12/8			DNP	-	COACH'S DECISION						
at NSU	12/21			DNP	-	COACH'S DECISION						
GW	12/28	1		0-0	0-0	0-0	0	0	0	0	0	0
at Hof	1/4			DNP	-	COACH'S DECISION						
at NU	1/6			DNP	-	COACH'S DECISION						
UNCW	1/11			DNP	-	COACH'S DECISION						
COFC	1/13			DNP	-	COACH'S DECISION						
ELON	1/20			DNP	-	COACH'S DECISION						

## >> STOVER'S CAREER STATISTICS

Season	GP	GS	Min/Avg	FG-FGA	Pct	3pt-Att	Pct	FT-FTA	Pct	Off	Def	Reb	Avg	PF	FO	A	TO	Blk	S	TP	Avg
2018-19	2	0	1/0.5	0-2	.000	0-0	.000	0-0	.000	0	0	0	0.0	0	0	0	0	0	0	0	0.0
CAREER	2	0	1/0.5	0-2	.000	0-0	.000	0-0	.000	0	0	0	0.0	0	0	0	0	0	0	0	0.0



2018-19 Tribe Women's Basketball





**W&M Women's Basketball**  
**William & Mary Season Schedule/Results & Leaders (as of Jan 21, 2019)**  
**All games**

<b>RECORD:</b>	<b>OVERALL</b>	<b>HOME</b>	<b>AWAY</b>	<b>NEUTRAL</b>
ALL GAMES	10-6	6-2	4-4	0-0
CONFERENCE	3-2	2-1	1-1	0-0
NON-CONFERENCE	7-4	4-1	3-3	0-0

<b>Date</b>	<b>Opponent</b>	<b>Score</b>	<b>Att. High Points</b>	<b>High Rebounds</b>
11/06/18	VCU	55-72 L	684 (15)Boggs, Bianca	(6)Boggs, Bianca
11/12/18	HOWARD	W 88-75	564 (26)Boggs, Bianca	(9)Boggs, Bianca
11/17/18	at Loyola	W 65-49	352 (14)Boggs, Bianca	(6)Reynolds, Victoria
11/24/18	at Davidson	65-76 L	412 (18)Boggs, Bianca	(10)Boggs, Bianca
11/27/18	EAST CAROLINA	W 63-43	574 (15)Reynolds, Victoria	(15)Reynolds, Victoria
11/30/18	at HARTFORD	45-50 L	649 (14)Hodgson, Eva	(7)Reynolds, Victoria
12/02/18	at Fairfield	W 60-54	627 (22)Boggs, Bianca	(5)Hodgson, Eva
				(5)Rogers, Gabby
				(5)Boggs, Bianca
12/05/18	RICHMOND	W 65-55	634 (15)Hodgson, Eva	(6)Reynolds, Victoria
12/8/18	at Old Dominion	69-83 L	1802 (18)Birdsong, Harper	(6)Reynolds, Victoria
				(6)Eichner, Bailey
12/21/18	at Norfolk State	W 55-44	246 (14)Birdsong, Harper	(9)Reynolds, Victoria
12/29/18	GEORGE WASHINGTON	W 73-59	611 (26)Boggs, Bianca	(10)Boggs, Bianca
1/4/19	*at Hofstra	W 60-55	323 (22)Boggs, Bianca	(10)Boggs, Bianca
01/06/19	*at Northeastern	74-88 L	540 (21)Boggs, Bianca	(6)Boggs, Bianca
01/11/19	*UNCW	W 70-64	657 (25)Boggs, Bianca	(7)Reynolds, Victoria
				(7)Pollard, Nyla
01/13/19	*COL. OF CHARLESTON	54-66 L	582 (18)Boggs, Bianca	(10)Reynolds, Victoria
01/20/19	*ELON	W 65-60	904 (13)Birdsong, Harper	(6)Reynolds, Victoria
			(13)Boggs, Bianca	

\* - CAA game

<b>Attendance Summary</b>	<b>Games</b>	<b>Attend</b>	<b>Avg/Game</b>
Home	8	5210	651
Away	8	4951	619
Neutral	0	0	0
Total	16	10161	635



**W&M Women's Basketball**  
**William & Mary Combined Team Statistics (as of Jan 21, 2019)**  
**All games**

<b>RECORD:</b>	<b>OVERALL</b>	<b>HOME</b>	<b>AWAY</b>	<b>NEUTRAL</b>
ALL GAMES	10-6	6-2	4-4	0-0
CONFERENCE	3-2	2-1	1-1	0-0
NON-CONFERENCE	7-4	4-1	3-3	0-0

#	Player	gp-gs	min	avg	Total		3-Point		F-Throw		Rebounds				pf	dq	a	to	blk	stl	pts	avg
					fg-fga	fg%	3fg-fga	3fg%	ft-fa	ft%	off	def	tot	avg								
02	Boggs, Bianca	16-16	544	34.0	96-217	.442	24-68	.353	60-82	.732	20	87	107	6.7	40	2	61	64	13	37	276	17.3
12	Birdsong, Harper	16-4	338	21.1	58-149	.389	33-82	.402	22-31	.710	10	21	31	1.9	33	1	19	31	5	12	171	10.7
30	Reynolds, Victoria	16-13	486	30.4	56-119	.471	11-22	.500	40-50	.800	13	86	99	6.2	39	2	36	55	11	22	163	10.2
10	Hodgson, Eva	16-16	467	29.2	44-106	.415	14-40	.350	28-38	.737	12	26	38	2.4	46	1	49	43	6	23	130	8.1
11	Pollard, Nyla	16-12	472	29.5	25-84	.298	8-34	.235	17-26	.654	16	31	47	2.9	39	2	43	28	3	16	75	4.7
15	Krause, Emma	16-2	235	14.7	23-71	.324	17-53	.321	6-11	.545	9	25	34	2.1	24	0	11	6	9	4	69	4.3
05	Jones, Misha	16-3	195	12.2	21-46	.457	14-31	.452	8-10	.800	11	18	29	1.8	29	0	21	11	3	3	64	4.0
25	Rogers, Gabby	16-14	301	18.8	27-59	.458	0-1	.000	9-11	.818	14	30	44	2.8	49	0	5	14	6	13	63	3.9
00	Underwood, Libby	10-0	60	6.0	4-10	.400	0-3	.000	2-4	.500	1	0	1	0.1	1	0	1	6	1	1	10	1.0
03	Taylor, Ashley	3-0	8	2.7	0-4	.000	0-3	.000	1-2	.500	0	0	0	0.0	0	0	0	0	0	0	1	0.3
21	Eichner, Bailey	10-0	61	6.1	1-8	.125	0-3	.000	1-2	.500	4	9	13	1.3	8	0	2	3	1	3	3	0.3
20	Smith, Chandler	7-0	32	4.6	0-1	.000	0-0	.000	1-2	.500	1	7	8	1.1	4	0	1	4	2	0	1	0.1
32	Stover, Caroline	2-0	1	0.5	0-2	.000	0-0	.000	0-0	.000	0	0	0	0.0	0	0	0	0	0	0	0	0.0
Team											28	41	69				7					
Total.....		0	3200		355-876	.405	121-340	.356	195-269	.725	139	381	520	0.0	312	8	249	272	60	134	1026	0.0
Opponents.....		0	3199		350-876	.400	69-267	.258	224-325	.689	182	408	590	0.0	310	6	190	301	49	141	993	0.0

<b>TEAM STATISTICS</b>	<b>WM</b>	<b>OPP</b>	<b>Date</b>	<b>Opponent</b>	<b>Score</b>	<b>Att.</b>
SCORING	1026	993	11/06/18	VCU	L 55-72	684
Points per game	64.1	62.1	11/12/18	HOWARD	w 88-75	564
Scoring margin	+2.1	-	11/17/18	at Loyola	w 65-49	352
FIELD GOALS-ATT	355-876	350-876	11/24/18	at Davidson	L 65-76	412
Field goal pct	.405	.400	11/27/18	EAST CAROLINA	w 63-43	574
3 POINT FG-ATT	121-340	69-267	11/30/18	at HARTFORD	L 45-50	649
3-point FG pct	.356	.258	12/02/18	at Fairfield	w 60-54	627
3-pt FG made per game	7.6	4.3	12/05/18	RICHMOND	w 65-55	634
FREE THROWS-ATT	195-269	224-325	12/8/18	at Old Dominion	L 69-83	1802
Free throw pct	.725	.689	12/21/18	at Norfolk State	w 55-44	246
F-Throws made per game	12.2	14.0	12/29/18	GEORGE WASHINGTON	w 73-59	611
REBOUNDS	520	590	* 1/4/19	at Hofstra	w 60-55	323
Rebounds per game	32.5	36.9	* 01/06/19	at Northeastern	L 74-88	540
Rebounding margin	-4.4	-	* 01/11/19	UNCW	w 70-64	657
ASSISTS	249	190	* 01/13/19	COL. OF CHARLESTON	L 54-66	582
Assists per game	15.6	11.9	* 01/20/19	ELON	w 65-60	904
TURNOVERS	272	301				
Turnovers per game	17.0	18.8				
Turnover margin	+1.8	-				
Assist/turnover ratio	0.9	0.6				
STEALS	134	141				
Steals per game	8.4	8.8				
BLOCKS	60	49				
Blocks per game	3.8	3.1				
ATTENDANCE	5210	4951				
Home games-Avg/Game	8-651	8-619				
Neutral site-Avg/Game	-	0-0				

<b>Score by Periods</b>	<b>1st</b>	<b>2nd</b>	<b>3rd</b>	<b>4th</b>	<b>Totals</b>
William & Mary	264	259	267	236	1026
Opponents	238	235	269	251	993



**W&M Women's Basketball**  
**William & Mary Combined Team Statistics (as of Jan 21, 2019)**  
**CAA games only**

RECORD:	OVERALL	HOME	AWAY	NEUTRAL
ALLGAMES	3-2	2-1	1-1	0-0
CONFERENCE	3-2	2-1	1-1	0-0
NON-CONFERENCE	0-0	0-0	0-0	0-0

#	Player	gp-gs	min	avg	Total		3-Point		F-Throw		Rebounds				pf	dq	a	to	blk	stl	pts	avg
					fg-fga	fg%	3fg-fga	3fg%	ft-fa	ft%	off	def	tot	avg								
02	Boggs, Bianca	5-5	166	33.2	31-69	.449	12-26	.462	25-36	.694	8	25	33	6.6	18	2	16	16	3	7	99	19.8
12	Birdsong, Harper	5-0	113	22.6	16-54	.296	9-28	.321	9-12	.750	5	11	16	3.2	10	0	5	8	3	2	50	10.0
10	Hodgson, Eva	5-5	153	30.6	15-35	.429	6-14	.429	10-12	.833	6	4	10	2.0	15	1	12	14	4	7	46	9.2
30	Reynolds, Victoria	5-3	146	29.2	16-34	.471	4-8	.500	9-13	.692	3	23	26	5.2	12	0	12	17	4	9	45	9.0
05	Jones, Misha	5-2	83	16.6	10-20	.500	9-15	.600	3-4	.750	2	8	10	2.0	12	0	10	4	1	2	32	6.4
11	Pollard, Nyla	5-5	158	31.6	8-25	.320	3-11	.273	5-8	.625	8	9	17	3.4	12	1	15	7	2	3	24	4.8
25	Rogers, Gabby	5-3	94	18.8	5-14	.357	0-0	.000	4-5	.800	4	11	15	3.0	14	0	3	5	4	6	14	2.8
15	Krause, Emma	5-2	61	12.2	4-16	.250	3-13	.231	1-1	1.000	0	2	2	0.4	6	0	2	2	2	0	12	2.4
00	Underwood, Libby	1-0	8	8.0	0-1	.000	0-1	.000	1-2	.500	0	0	0	0.0	0	0	0	1	0	0	1	1.0
21	Eichner, Bailey	4-0	18	4.5	0-1	.000	0-0	.000	0-0	.000	0	2	2	0.5	4	0	1	1	0	0	0	0.0
Team											7	9	16					2				
Total.....		5	1000		105-269	.390	46-116	.397	67-93	.720	43	104	147	29.4	103	4	76	77	23	36	323	64.6
Opponents.....		5	1000		120-283	.424	18-82	.220	75-109	.688	68	135	203	40.6	103	3	61	86	12	38	333	66.6

TEAM STATISTICS	WM	OPP
SCORING	323	333
Points per game	64.6	66.6
Scoring margin	-2.0	-
FIELD GOALS-ATT	105-269	120-283
Field goal pct	.390	.424
3 POINT FG-ATT	46-116	18-82
3-point FG pct	.397	.220
3-pt FG made per game	9.2	3.6
FREE THROWS-ATT	67-93	75-109
Free throw pct	.720	.688
F-Throws made per game	13.4	15.0
REBOUNDS	147	203
Rebounds per game	29.4	40.6
Rebounding margin	-11.2	-
ASSISTS	76	61
Assists per game	15.2	12.2
TURNOVERS	77	86
Turnovers per game	15.4	17.2
Turnover margin	+1.8	-
Assist/turnover ratio	1.0	0.7
STEALS	36	38
Steals per game	7.2	7.6
BLOCKS	23	12
Blocks per game	4.6	2.4
ATTENDANCE	2143	863
Home games-Avg/Game	3-714	2-432
Neutral site-Avg/Game	-	0-0

Date	Opponent	Score	Att.
* 1/4/19	at Hofstra	W 60-55	323
* 01/06/19	at Northeastern	L 74-88	540
* 01/11/19	UNCW	W 70-64	657
* 01/13/19	COL. OF CHARLESTON	L 54-66	582
* 01/20/19	ELON	W 65-60	904

\* - CAA game

Score by Periods	1st	2nd	3rd	4th	Totals
William & Mary	89	80	75	79	323
Opponents	81	75	94	83	333



# WILLIAM & MARY RADIO AND TV CHART

**NOTES:** W&M looks to make it two in a row as it hits the road for five of its next seven games starting at JMU. The Tribe was selected to finish sixth in the CAA by a vote of league head coaches. Senior Bianca Boggs leads the Tribe averaging 17.3 ppg and 6.7 rpg. Redshirt sophomore Harper Birdsong is second on the team with 10.7 points per game, while junior Victoria Reynolds and 10.2 points a night..

RECORD	2018-19	LAST YR	STATS	W&M	OPP	JMU	OPP	W&M'S LAST THREE GAMES
<b>OVERALL</b>	10-6	16-14	<b>FG%</b>	.405	.400	.409	.332	<b>Jan. 11 UNCW*</b> <b>W, 70-64</b>
<b>CAA</b>	3-2	7-11	<b>FT%</b>	.725	.689	.727	.625	Boggs 25 pts, Reynolds 17 pts, Pollard & Jones 9 pts
<b>HOME</b>	6-2	9-6	<b>3PT%</b>	.356	.258	.356	.260	<b>Jan. 13 CHARLESTON*</b> <b>L, 54-66</b>
<b>AWAY/NEUTRAL</b>	4-4/0-0	7-7/0-1	<b>POINTS</b>	64.1	62.1	67.9	52.4	Boggs 18 pts, Pollard 9 pts, Reynolds 8 pts, 10 reb
			<b>REBOUNDS</b>	32.5	36.9	43.9	34.9	<b>Jan. 20 ELON*</b> <b>W, 65-60</b>
			<b>TURNOVERS</b>	17.0	18.8	15.1	15.0	Boggs 13 pts, Birdsong 13 pts, Reynolds 11 pts



## 0 LIBBY UNDERWOOD, G

SO./5-9/RYE, N.H./PORTSMOUTH

PPG	1.0	FG%	.400
RPG	0.1	FT%	.500 (2-4)
APG	0.1	3PT%	.000

- Looking to expand her role during her second season with the Green and Gold.
- Had six points and added a block and assist against VCU (11/6).
- Scored a career-high 8 points and added out 3 assists against USC Upstate (12/5/17).
- Added four points in a rebound against Drexel (1/9/18).
- Grabbed a rebound in the CAA Quarterfinal against Elon (3/8/18).

<b>POINTS</b>	8 vs. USC Upstate (12/5/17)
<b>REBOUNDS</b>	3 vs. Northeastern (1/21/18)
<b>ASSISTS</b>	3 vs. USC Upstate (12/5/17)
<b>LAST GAME:</b>	<b>DNP - COACH'S DECISION</b>



## 1 SYDNEY WAGNER, G

SO./5-6/PHOENIXVILLE, PA./SPRING FORD SENIOR HIGH (STETSON)

PPG	-	FG%	-
RPG	-	FT%	-
SPG	-	3PT%	-

- Transfer from Stetson that has to sit out the 18-19 season due to NCAA Transfer rule.
- Appeared in 32 games with nine starters for the Hatters last season.
- Scored a career-high 20 points against Florida.
- Dropped 18 points against on 5-of-8 from 3-point range against Webber International.
- Averaged 6.0 ppg and knocked down 42 triples during her freshman season at Stetson.

<b>POINTS</b>	20 vs. Florida (11/22/17)
<b>REBOUNDS</b>	5 vs. Lipscomb (2/19/18)
<b>ASSISTS</b>	3 vs. Lipscomb (2/19/18)
<b>LAST GAME:</b>	<b>DNP - TRANSFER RULE</b>



## 2 BIANCA BOGGS, G

SR./5-8/WALDORF, MD./ST. MARY'S RYKEN

PPG	17.3	FG%	.442
RPG	6.7	FT%	.732 (60-82)
APG	3.8	3PT%	.353

- Named team captain for the 2018-19 season.
- Tabbed CAA Player of the Week for the week of Dec. 31.
- Has 13 20-point games, including six 20-point games this season.
- Scored a career-high 33 points in a win at St. Francis (12/2/17).
- Ranks 13th in school history with 1,188 career points.

<b>POINTS</b>	33 vs. St. Francis (Pa.) (12/2/17)
<b>REBOUNDS</b>	11 (2x) last time vs. ECU (11/27/18)
<b>ASSISTS</b>	8 at Delaware (2/9/18)
<b>LAST GAME:</b>	<b>13 PTS, 3 REB, 3 AST</b>



## 3 ASHLEY TAYLOR, G

JR./5-0/CHARLOTTESVILLE, VA./ST. ANNE'S BELLEFIELD

PPG	0.3	FG%	.000
RPG	0.0	FT%	.500 (1-2)
APG	0.0	3PT%	.000

- Has seen action in 21 games during her career with the Tribe.
- Made her first career basket, a 3-pointer, in the win against USC Upstate (12/5/17).
- Grabbed a pair of rebounds and added an assist against Loyola (11/25/17).
- Hit a basket and grabbed a board at Elon (3/1/18)

<b>POINTS</b>	3 vs. USC Upstate (12/5/17)
<b>REBOUNDS</b>	2 vs. Loyola (11/25/17)
<b>ASSISTS</b>	1 (4x) last time at Charleston (12/29/17)
<b>LAST GAME:</b>	<b>DNP - COACH'S DECISION</b>



## 5 MISHA JONES, G/F

SR./5-0/MANASSAS PARK, VA./BATTLEFIELD

PPG	4.0	FG%	.457
RPG	2.1	FT%	.800 (8-10)
APG	1.3	3PT%	.452

- Named a team captain for the second straight season this year.
- Matched a career-high with nine points on three, 3-pointers vs. UNCW (1/11).
- Played a season-high 20 minutes and had six points at Northeastern (1/6).
- Made her first career start against George Washington (12/28) and scored four points.
- Scored a career-high nine points, including seven straight points in the win vs. Howard.

<b>POINTS</b>	9 vs. Howard (11/12/18)
<b>REBOUNDS</b>	5 (2x) vs. Delaware (2/23/18)
<b>ASSISTS</b>	4 (3x) at Old Dominion (12/8/18)
<b>LAST GAME:</b>	<b>6 PTS, 2 REB, 2 AST</b>



## 10 EVA HODGSON, G

FR./5-9/RINDGE, N.H./NEW HAMPTON SCHOOL

PPG	8.1	FG%	.415
RPG	2.4	FT%	.737 (28-38)
APG	3.1	3PT%	.350

- Named CAA Rookie of the Week for the week of Dec. 3 and Jan. 7.
- Scored a career-high 18 points in the CAA opening win at Hofstra (1/4).
- Had 16 points, four rebounds, two assists, and two steals at Northeastern (1/6).
- Set career-highs against Richmond (12/5) in points (15) and assists (6).
- Her parents and two brothers all played Division III basketball.

<b>POINTS</b>	18 at Hofstra (1/4/19)
<b>REBOUNDS</b>	5 (2x) last time at Fairfield (12/2/18)
<b>ASSISTS</b>	6 (3x) last time vs. Elon (1/20/19)
<b>LAST GAME:</b>	<b>4 PTS, 4 REB, 6 AST</b>



## 11 NYALA POLLARD, G

SO./5-9/VIRGINIA BEACH, VA./PRINCESS ANNE

PPG	4.7	FG%	.298
RPG	2.9	FT%	.654 (17-26)
APG	2.7	3PT%	.235

- Should be a major contributor after being named to the CAA All-Rookie team last year.
- Made her first start of the year & had a double-double (10 pts, 12 reb) vs. ECU (11/27).
- Had nine points and added two rebounds, four assists, and a steal at Loyola (1/17).
- Chipped in nine points and a career-high six helpers in the win vs. UNCW (1/11).
- Scored a career-high 14 points, four assists, three rebounds against Upstate (12/5/17).

<b>POINTS</b>	14 vs. USC Upstate (12/5/17)
<b>REBOUNDS</b>	12 vs. East Carolina (11/27/18)
<b>ASSISTS</b>	5 (2x) last time vs. ODU (12/17/17)
<b>LAST GAME:</b>	<b>2 PTS, 2 AST, 1 REB</b>



## 12 HARPER BIRDSONG, G

R./5-10/SUFFOLK, VA./NANSEMOND SUFFOLK (GW)

PPG	10.7	FG%	.389
RPG	1.9	FT%	.710 (22-31)
APG	1.2	3PT%	.402

- Set a career-high with 18 points and four assists at Old Dominion (12/8).
- Notched 16 points and grabbed five rebounds at Northeastern (1/6).
- Scored 16 points and had three steals against George Washington (12/28).
- Had 14 points, a career-high five rebounds, and one assist at Norfolk State (12/21).
- Appeared in nine games during her freshman season at George Washington.

<b>POINTS</b>	18 vs. Old Dominion (12/8/18)
<b>REBOUNDS</b>	5 (2x) last time vs. Charleston (1/13/19)
<b>ASSISTS</b>	4 at Old Dominion (12/8/18)
<b>LAST GAME:</b>	<b>13 PTS, 3 REB, 2 AST</b>



## 15 EMMA KRAUSE, F

FR./6-2/PLANTATION, FLA./CARDINAL GIBBONS

PPG	4.3	FG%	.324
RPG	2.1	FT%	.545 (6-11)
BPG	0.6	3PT%	.321

- Named CAA Rookie of the Week for the week of Dec. 24.
- Made her first career start and played 12 minutes against UNCW (1/11).
- Netted a career-high 14 points on four 3-pointers against Howard (11/12).
- Hit three 3-pointers for nine points in the win against Elon (1/20).
- Tabbed to the Sun-Sentinel First-Team All-Broward County following her junior season.

<b>POINTS</b>	14 vs. Howard (11/12/18)
<b>REBOUNDS</b>	5 vs. Old Dominion (12/8/18)
<b>ASSISTS</b>	3 at Loyola (11/17/18)
<b>LAST GAME:</b>	<b>9 PTS, 1 BLK IN 10 MINS</b>



## 20 CHANDLER SMITH, C

SR./6-3/PORT TOBACCO, MD./ST. MARY'S-RYKEN

PPG	0.1	FG%	.000
RPG	1.1	FT%	.500 (1-2)
BPG	0.3	3PT%	-

- Named a team captain for her senior season.
- Key reserve in the post that has appeared in 59 career games.
- Tied a career-high with four points in a win at St. Francis (12/1/17).
- Grabbed a career-high five rebounds at Hofstra (2/7/17).
- Rejected 26 shots during her career.

<b>POINTS</b>	4 (4x) last time at SFU (12/2/17)
<b>REBOUNDS</b>	5 vs. Hofstra (2/7/17)
<b>BLOCKS</b>	3 vs. Mount St. Mary's (12/18/16)
<b>LAST GAME:</b>	<b>DNP - COACH'S DECISION</b>



## 21 BAILEY EICHNER, G/F

SO./6-1/CUDAHY, WISC./CUDAHY

PPG	0.3	FG%	.125
RPG	1.3	FT%	.500 (1-2)
APG	0.2	3PT%	.000

- Looking to expand her role this year after seeing action in 17 games last year.
- Grabbed a career-high six rebounds at Old Dominion (12/8/18).
- Had a career-high four points and added a career-high five rebounds vs. JMU (2/2/18).
- Made her collegiate debut in last year's season opener at Howard (11/11/17).
- Three sport athlete in high school playing basketball, volleyball, and track & field.

<b>POINTS</b>	4 vs. James Madison (2/2/18)
<b>REBOUNDS</b>	6 at Old Dominion (12/8/18)
<b>ASSISTS</b>	2 vs. Hofstra (1/19/18)
<b>LAST GAME:</b>	<b>PLAYED 1 MINUTE</b>



## 25 GABBY ROGERS, C

SO./6-1/DALLAS, TEXAS/BISHOP LYNCH

PPG	3.9	FG%	.458
RPG	2.8	FT%	.818 (9-11)
SPG	0.8	3PT%	.000

- Center that has started 14 games this season for the Tribe.
- Had eight points and tied a career-high with five rebounds in the win at Fairfield (12/2).
- Scored a career-high 10 points and a steal at Davidson (11/24).
- Notched a then-season-high eight points in the win at Loyola (11/17).
- Made her first career start on opening night against VCU (11/6) scoring four points.

<b>POINTS</b>	10 at Davidson (11/24/18)
<b>REBOUNDS</b>	5 (4x) vs. Charleston (1/13/19)
<b>STEALS</b>	3 (3x) last time at Hofstra (1/4/19)
<b>LAST GAME:</b>	<b>5 PTS, 4 REB, 2 BLKS</b>



## 30 VICTORIA REYNOLDS, F

JR./5-10/FAIRFAX, VA./ARCHBISHOP SPALDING

PPG	10.2	FG%	.471
RPG	6.2	FT%	.800 (40-50)
SPG	1.4	3PT%	.500

- Recorded a double-double with 15 points and 15 rebounds against ECU (11/27/18).
- Notched a season-high 17 points with 7 rebs vs. UNCW (1/11).
- Scored 14 points and matched a career-high with two 3-pointers against Uofr (12/5/18).
- Poured in a career-high 22 points in the win at St. Francis (12/2/17).
- Grabbed 18 boards in the win against Charleston (1/26/18).

<b>POINTS</b>	22 vs. St. Francis (Pa.) (12/2/17)
<b>REBOUNDS</b>	18 vs. Charleston (1/26/18)
<b>STEALS</b>	7 vs. Hofstra (1/28/18)
<b>LAST GAME:</b>	<b>11 PTS, 6 REB, 3 AST</b>



## 32 CAROLINE STOVER, C

FR./6-3/PLYMPTON, MASS./CARDINAL SPELLMAN

PPG	0.0	FG%	.000
RPG	0.0	FT%	-
APG	0.0	3PT%	-

- Made her collegiate debut in the Tribe's win over Loyola.
- Freshman post player looking to break into the post rotation this season.
- Played four seasons of varsity basketball at Cardinal Spellman.
- Ranked as the No. 131 in her class by Blue Star.
- Tabbed to the Catholic Central League All-Star team.

<b>POINTS</b>	-
<b>REBOUNDS</b>	-
<b>STEALS</b>	-
<b>LAST GAME:</b>	<b>DNP - COACH'S DECISION</b>

**NOTES:**