



WILLIAM & MARY

MEDIA RELATIONS DIRECTOR: Andrew Phillips / PHONE: (757) 221-3344 / CELL: (804) 840-4439 / EMAIL: atphillips01@wm.edu

TRIBE BY THE NUMBERS

| | |
|------|---|
| 15.4 | W&M leads the CAA with 15.4 assists per game. The Tribe has 431 assists this season. |
| 16 | Senior Bianca Boggs now has 16 career 20-point performances. With her next 20-point game she will move into a tie for fifth place in W&M history. |
| 64 | The Tribe's senior class of Bianca Boggs, Misha Jones, Chandler Smith have helped the Tribe to 64 victories, which is the second-most in school history. |
| 70 | 70 seems to be a magic number under Swanson. W&M has reached that mark 49 times under Swanson, and has posted a 40-9 mark when it scores more than 70 points. |
| 89% | Since the start of CAA play, Eva Hodgson is shooting 89.6-percent from the free throw. She has connected on 40-of-44 from the stripe in the past 16 games. |
| 277 | Freshman Eva Hodgson has scored 277 points this season, which is eight points away from the top 10 in freshman history at W&M. |
| 478 | Boggs is in 8th place in single-season school history for scoring. She is 45 points away from the school record of 522 single-season points. |
| 1403 | Boggs now has 1,403 career points, and is sixth in school history in scoring. She is 101 points away from fifth place all-time. |

WHEN REFERENCING WILLIAM & MARY AND TRIBE:

William & Mary: preferred in all but formal treatments
W&M: most informal, use as second reference or on scorebug
College of William & Mary: preferred formal treatment
Do not use: WM, William and Mary, College of William and Mary, The College of William and Mary, The College

The William & Mary Athletics official nickname is the Tribe. While the Griffin is the official mascot of William & Mary Tribe Athletics, do not reference teams or the school as the Griffins.

GAME

29

WILLIAM & MARY (13-15, 6-11 CAA) vs. HOFSTRA (9-20, 3-14 CAA)

Saturday, March 9, 2019 | 2:00 PM | Williamsburg, Va. | Kaplan Arena
Video: TribeAthletics.TV | Live Stats: TribeAthletics.com

SERIES HISTORY

| | | |
|----------|-----------------------|---|
| ALL-TIME | Hofstra leads 30-12-1 | Last: W&M, 60-55 (Mack Sports Complex) (1/5/19) |
| AT W&M | Series Tied 8-8 | Last: W&M, 63-53 (Kaplan Arena) 1/28/18) |

W&M NEWS AND NOTES

- The William & Mary women's basketball team closes the regular season by hosting Hofstra for Senior on Saturday, March 9. Tip-off between the Tribe and Pride is set for 2 p.m.

- W&M and Hofstra meet for the 44th time in series history with the Pride leading 30-12-1 all-time. The Tribe is going after the season sweep after picking up a just its second-ever 60-55 victory in Hempstead in the CAA opener on Friday, Jan. 5.

- Prior to today's game, W&M will honor its three seniors – Bianca Boggs, Misha Jones, and Chandler Smith, who will play their final game in Kaplan Arena this afternoon. The trio has helped the Tribe to 64 career victories, which are the second-most in school history.

- W&M set a school record for field goal-percentage in the setback against Northeastern on Thursday night. The Tribe shot a red-hot 64.3-percent (27-for-42) from the floor in the contest. It was the third time in the last five games W&M shot better than 50-percent. The Tribe has improved its season field goal percentage to 41.4-percent, which ranks second in the league.

- Freshman Eva Hodgson tied a school record with her fourth CAA Rookie of the Week Award this week. The freshman joins Kyra Kaylor and Dominique Lewis as the only Tribe players to win the award four times since its inception in the 2002-03 season. Hodgson averaged 16.5 points, 4.0 rebounds, and 4.0 assists in the Tribe's 1-1 week. Senior Bianca Boggs was named CAA Player of the Week for the week of Dec. 31, while freshman Emma Krause was tabbed CAA Rookie of the Week for the week of Dec. 24 to make six weekly awards this season for the Tribe.

- W&M played its second overtime game of the season at Drexel on Friday night. Both overtime games have required more than one extra session, as the Tribe is 1-1 in overtime this year. W&M played its first triple-overtime game since Nov. 27, 1999, and has handed Drexel its only two more than one-overtime losses in its program history.

- The Green and Gold has eight players - Bianca Boggs, Victoria Reynolds, Eva Hodgson, Harper Birdsong, Gabby Rogers, Nyla Pollard, Emma Krause, and Misha Jones - have all eclipsed the 100-point mark on the season this year. In the previous five seasons under head coach Ed Swanson, only seven players have accomplished this feat in a single-season.

- Hodgson has started every game this season and the returns on the rookie point guard have been good. The freshman has been in double-figures in 15 games. For the season, Hodgson is averaging 9.9 points per game (most among CAA freshman), with 2.9 rebounds, and 3.1 helpers per contest. Hodgson scored a career-high 24 points at UNCW on Feb. 10. Her 82.4-percent from the free throw line ranks her fourth in the CAA, while her 1.2 assists/turnover ratio is good for seventh.

- Boggs has been in double-figures in 24 of 28 games this season and has accomplished that feat in 49 of her last 58 contests. Boggs was selected to the Preseason All-CAA First-Team after a breakout junior season. The senior captain leads the team with 17.1 points per night and has added 7.0 rebounds and 4.2 assists per night. The senior has turned in 16 20-point career games, which ranks her tied for sixth all-time in school history. She notched her second career 30-point game with a season-high 32 points at Drexel on March 1. Boggs became the first player in school history to record at least 1000 points, 500 rebounds, and 300 career assists at Delaware on March 3.

- The Green and Gold is limiting its opponents to 28.5-percent (139-of-487) from 3-point range this season. W&M limited Drexel to a season-low 7-percent (2-for-28) from 3-point range in the win on Friday. The Tribe ranks third in the league in the category, but that is also good enough for 41st nationally.

- W&M has moved its free throw percentage back to first in the CAA shooting 74.5-percent from the stripe, and ranks 39th in the country. The Tribe shot a perfect 16-for-16 from the line at James Madison on Jan. 25, which was the first time the Tribe was perfect from the line (minimum 8 attempts) since 2016.

- The Green and Gold is hitting 3-pointers at the highest clip under Ed Swanson this season and has had five, or more, 3-pointers in 25 of its 28 games. W&M ranks first in the CAA hitting 7.4 3-pointers per game. That mark is two more than the next best average in the six-years under Swanson. As a team, the Tribe is hitting 35.1-percent from range, which is second in the CAA, and 52nd in the NCAA. Furthermore, W&M has hit more than 10 3-pointers in six games this season.

- Sophomore Bailey Eichner has seen her role increase over the last couple of weekends. For the season, she is averaging 0.7 points and 1.4 rebounds per game in 18 games this season. She scored a career-high five points against James Madison and then played a career-high 16 minutes at Delaware during the past two weeks.

| | | | | |
|--|----------------|--------------------------|-----------------|---|
| | Nov. 6 | VCU | L, 55-72 | Senior Bianca Boggs scored 15 points, but the Tribe couldn't overcome an early scoring drought falling to in-state rival VCU on opening night. |
| | NOV. 12 | HOWARD | W, 88-75 | Four players scored in double-figures as the Tribe picked up its first victory of the season. Senior Bianca Boggs led the Tribe with 26 points, nine rebounds, and seven assists. |
| | Nov. 17 | at Loyola (Md.) | W, 65-49 | The Tribe led throughout as it won its first road game of the season with a convincing 65-49 decision at Davidson. Boggs (14) and Reynolds (10) were both in double-figures. |
| | Nov. 24 | at Davidson | L, 65-76 | W&M fought all afternoon, but Davidson pulled away down the stretch as it fell to Davidson 76-65. Bianca Boggs notched a double-double with 18 points and 10 rebs. |
| | NOV. 27 | ECU | W, 63-43 | Both Victoria Reynolds and Nyla Pollard recorded a double-double as the Tribe cruised to a 20-point victory after previously unbeaten East Carolina. |
| | Nov. 30 | at Hartford | L, 45-50 | W&M couldn't overcome a cold shooting night as it shot just 22.2-percent (12-of-54) from the floor. Freshman Eva Hodgson led the team with a career-high 14 points. |
| | Dec. 2 | at Fairfield | W, 60-54 | The Tribe outscored the Stags 6-0 in the final moments to pick up its fourth win of the season. Senior Bianca Boggs scored a game-high 22 to pace the Tribe. |
| | Dec. 5 | RICHMOND | W, 65-55 | W&M never trailed as it picked up its third straight win against Richmond. Freshman Eva Hodgson (15 pts) and Harper Birdson (13 pts) both had career-highs. |
| | Dec. 8 | at Old Dominion | L, 69-83 | ODU snapped a three-game losing streak to the Tribe at home. Redshirt sophomore Harper Birdsong led the Tribe with a career-high 18 points. |
| | Dec. 21 | at Norfolk State | W, 55-44 | The Tribe used a strong defensive effort to gut out a 55-44 road win at Norfolk State following a 13-day lay-off. Sophomore Harper Birdsong had a game-high 14 points off of the bench. |
| | DEC. 29 | GEORGE WASHINGTON | W, 73-59 | Senior Bianca Boggs recorded her second double-double with 26 points and 10 rebounds as the Tribe topped GW in a wire-to-wire win, 73-59. |
| | Jan. 4 | at Hofstra* | W, 60-55 | Senior Bianca Boggs had another double-double (22 pts, 10 reb) and freshman Eva Hodgson had a career-high 18 points as W&M won its second-ever game at Hofstra. |
| | Jan. 6 | at Northeastern* | L, 74-88 | Three scored in double-figures, but W&M couldn't overcome a big second half from Northeastern. Senior Bianca Boggs recorded her third straight 20-point game with 21. |
| | JAN. 11 | UNCW | W, 70-64 | W&M closed the first quarter on 17-0 run and never looked back as it picked up a 70-64 victory over UNCW. Bianca Boggs had 25 points and Victoria Reynolds had 17. |
| | JAN. 13 | CHARLESTON | L, 54-66 | The Tribe tied the game three times, but couldn't overcome a fiery Charleston team. Senior Bianca Boggs scored a game-high 18 points in the contest. |
| | JAN. 20 | ELON * | W, 65-60 | W&M used a 15-3 run to end third quarter and start the fourth to topple defending CAA Champion Elon. Bianca Boggs and Harper Birdsong led the team with 13 points. |
| | Jan. 25 | at James Madison * | L, 65-48 | The Tribe couldn't shake a tough shooting night and a slow start as it fell at James Madison. Freshman Eva Hodgson led the Tribe with 13 points. |
| | Jan. 27 | at Towson* | W, 80-69 | Four scored in double-figures as the Tribe became the first team to win at SECU this arena with an 80-69 triumph. Senior Bianca Boggs finished with a game-high 22 points. |
| | FEB. 1 | DELAWARE* | L, 59-70 | W&M couldn't overcome a fast Delaware start as it fell at home to the visiting Blue Hens. Four scored in double-figures for the Tribe led by Reynolds with 14 points. |
| | FEB. 3 | DREXEL* | L, 58-62 | The Tribe made a furious fourth-quarter comeback, but Drexel held on to pick up a 62-58 victory. Senior Bianca Boggs scored 17 points to lead the Tribe. |
| | Feb. 8 | at Charleston* | L, 77-79 (2ot) | Charleston's Tyler Collins hit a lay-up with 4.7 seconds left in double overtime to sink the Tribe in Charleston. Senior Bianca Boggs poured a game-high 23 points. |
| | Feb. 10 | at UNCW* | L, 58-66 | UNCW scored the final 10 points of the game to even the season series against the Tribe at Trask Coliseum. Freshman Eva Hodgson scored a career-high 24 to lead W&M. |
| | Feb. 17 | at Elon * | W, 64-59 | The Tribe scored 15 of the first 17 points and the last five points of the game to snap its skid. Four were in double-figures led by freshman Eva Hodgson with 14 points. |
| | FEB. 22 | TOWSON* | L, 75-82 | Towson used a fourth quarter rally to squeak by W&M at Kaplan Arena on Friday night. Senior Bianca Boggs had 18 points, while sophomore Gabby Rogers scored 17 points. |
| | FEB. 24 | JAMES MADISON* | L, 65-78 | W&M fought to the end, but fell to first-place James Madison. Both senior Bianca Boggs and junior Victoria Reynolds scored 16 points to lead the Tribe. |
| | March 1 | at Drexel* | W, 77-72 (3ot) | The Green and Gold played its longest game since 1999 as it won a triple-overtime thriller at Drexel. Boggs had a season-high 32, and Jones had a career-high 12 points. |
| | March 3 | at Delaware* | L, 52-68 | Delaware used a big second half to rally past the Tribe on Sunday afternoon. Freshman Eva Hodgson scored a game-high 17 points to lead W&M. |
| | MARCH 7 | NORTHEASTERN* | L, 71-75 | Senior Bianca Boggs scored a game-high 17 points, but the Tribe couldn't overcome a late Northeastern run. |
| | MARCH 9 | HOFSTRA* | 2 PM | W&M closes the regular season with the team it started CAA play against. The Tribe picked up a 63-53 victory over the Pride at Kaplan Arena last year. |
| | Mar. 13-16 | CAA Championship | | Delaware hosts the 2019 CAA Tournament at the Bob Carpenter Center in Newark, Del. The event runs from March 13-16. |



GENERAL INFORMATION

Name: College of William & Mary
Location: Williamsburg, Va.
Founded: 1693 (2nd oldest college in U.S.)
Enrollment (includes graduate): 8,617
Nickname: Tribe
Colors: Green, Gold and Silver
Arena (capacity): Kaplan Arena (8,600)
Affiliation: NCAA Division I
Conference: Colonial Athletic Association (CAA)
President: Katherine A. Rowe (Carleton, 1984)
Chancellor: Robert M. Gates (William & Mary, 1965)
Director of Athletics: Samantha K. Huge (Gordon, 1992)

LAST GAME STARTERS

2

BIANCA BOGGS

Sr. • G • 5-9

Waldorf, Md./St. Mary's Ryken

| G-GS | PPG | RPG | APG | FG% | 3P% | FT% | STL | BLK |
|-------|------|-----|-----|------|------|------|-----|-----|
| 28-28 | 17.1 | 6.9 | 4.3 | .440 | .342 | .742 | 68 | 25 |

- Named team captain for the 2018-19 season.
- Tabbed CAA Player of the Week for the week of Dec. 31.
- Has 16 20-point games, including nine 20-point games this season.
- Scored a season-high 32 points in the win at Drexel (3/1).
- Ranks sixth in school history with 1,377 career points.

10

EVA HODGSON

Fr. • G • 5-9

Rindge, N.H./New Hampton School

| G-GS | PPG | RPG | APG | FG% | 3P% | FT% | STL | BLK |
|-------|-----|-----|-----|------|------|------|-----|-----|
| 28-28 | 9.9 | 2.9 | 3.1 | .444 | .400 | .824 | 41 | 12 |

- Named CAA Rookie of the Week for the weeks of Dec. 3, Jan. 7, Feb. 11, and March 4.
- Poured in a career-high 24 points at UNCW (2/10).
- Scored a then-career-high 18 points in the CAA opening win at Hofstra (1/4).
- Netted 13 pts and grabbed a CH six boards with five dimes in the win at Towson (1/20).
- Her parents and two brothers all played Division III basketball.

11

NYLA POLLARD

So. • G • 5-9

Virginia Beach, Va./Princess Anne

| G-GS | PPG | RPG | APG | FG% | 3P% | FT% | STL | BLK |
|-------|-----|-----|-----|------|------|------|-----|-----|
| 28-24 | 4.4 | 2.8 | 2.3 | .302 | .293 | .614 | 27 | 3 |

- Made her first start of the year & had a double-double (10 pts, 12 reb) vs. ECU (11/27).
- Scored nine points on three 3-pointers and grabbed two boards against JMU (2/24).
- Had nine points and added two rebounds, four assists, and a steal at Loyola (11/17).
- Scored a career-high 14 points, four assists, three rebounds against Update (12/5/17).

25

GABBY ROGERS

So. • C • 6-2

Dallas, Texas/Bishop Lynch

| G-GS | PPG | RPG | APG | FG% | 3P% | FT% | STL | BLK |
|-------|-----|-----|-----|------|------|------|-----|-----|
| 27-27 | 4.7 | 2.9 | 0.3 | .475 | .000 | .800 | 16 | 9 |

- Center that has started 24 games this season for the Tribe.
- Poured a career-high 17 points on 8-of-9 from the field against Towson (2/22).
- Notched her first career double-double with 14 points and 12 rebounds at CofC (2/8).
- Had eight points and twi five rebounds in the win at Fairfield (12/2).
- Scored a career-high 10 points and a steal at Davidson (11/24).

30

VICTORIA REYNOLDS

Jr. • F • 5-10

Fairfax, Va./Archbishop Spalding

| G-GS | PPG | RPG | APG | FG% | 3P% | FT% | STL | BLK |
|-------|------|-----|-----|------|------|------|-----|-----|
| 28-25 | 10.5 | 5.4 | 2.2 | .450 | .365 | .805 | 39 | 19 |

- Recorded a double-double with 15 points and 15 rebounds against ECU (11/27/18).
- Tied a season-high 17 points and five rebounds at Charleston (2/8).
- Notched a season-high 17 points with 7 rebs vs. UNCW (11/11).
- Poured in a career-high 22 points in the win at St. Francis (12/2/17).
- Grabbed 18 boards in the win against Charleston (1/26/18).

TRIBE TRENDS

WILLIAM & MARY RECORD
 Overall..... 13-15
 CAA Games..... 6-11
 Leads at halftime..... 13-2
 Trails at halftime..... 0-10
 Tied at Halftime..... 0-3
 Home..... 6-7
 Away..... 7-8
 Neutral..... 0-0

BY MONTH
 November..... 3-3
 December..... 4-1
 January..... 4-3
 February..... 1-6
 March..... 1-2

SCORING...
 W&M scores fewer than 40 pts..... 0-0
 W&M scores 40-49..... 0-2
 W&M scores 50-59..... 1-6
 W&M scores 60-69..... 7-3
 W&M scores 70-79..... 3-4
 W&M scores 80+..... 2-0
 Opp. scores fewer than 40 pts..... 0-0
 Opp. scores 40-49..... 3-0
 Opp. scores 50-59..... 6-1
 Opp. scores 60-69..... 3-5
 Opp. scores 70-79..... 1-6
 Opp. scores 80+..... 0-3

FROM THE FIELD ...
 W&M shoots below 35%..... 0-3
 W&M shoots better than 35%..... 13-12
 W&M shoots better than 40%..... 10-4
 W&M shoots better than 45%..... 11-3
 W&M shoots better than 50%..... 2-2

FINAL MARGIN
 1-3 points..... 0-1
 4-7 points..... 6-4
 8-10 points..... 1-1
 11-15 points..... 4-6
 16+ points..... 2-3
 In Overtime..... 0-0

BATTLE OF THE BOARDS
 Outrebounding opponent..... 4-2
 Outrebounded by opponent..... 8-12
 Rebounds are even..... 1-1

DOWN TO THE WIRE
 Leading with 5:00 left..... 11-3
 Trailing with 5:00 left..... 1-11
 Tied with 5:00 left..... 1-1

LAYING IT ON THE LINE...
 W&M attempts more free throws..... 5-3
 Opp. attempts more free throws..... 7-11
 Free Throws are even..... 1-1

JERSEY COLOR
 White..... 5-3
 Green..... 6-5
 Gold..... 2-6
 Pink..... 0-1

STRENGTH OF OPPOSITION
 vs. Top 25 teams..... 0-0
 vs. teams with a winning record..... 5-9
 vs. teams .500 record..... 1-0
 vs. teams with a losing record..... 7-5

STREAKING
 Coming off of a win..... 4-9
 Coming off of a loss..... 9-5
 Longest Winning Streak..... W3
 Longest Losing Streak..... L4
 Current Streak..... L2

RESERVES

| POS. | NO. | NAME | HT. | CL. | G-GS | PPG | RPG | APG | FG% | 3P% | FT% | MISC. |
|------|-----|-----------------|-----|-----|------|-----|-----|-----|------|------|------|-------|
| G | 0 | Libby Underwood | 5-9 | So. | 14-0 | 0.9 | 0.3 | 0.1 | .357 | .000 | .600 | 1 stl |

NOTE: Scored six points in the second half of the game versus VCU (11/6).

| | | | | | | | | | | | | |
|---|---|---------------|-----|-----|---|---|---|---|---|---|---|---|
| G | 1 | Sydney Wagner | 5-6 | So. | - | - | - | - | - | - | - | - |
|---|---|---------------|-----|-----|---|---|---|---|---|---|---|---|

NOTE: Transfer from Stetson that has to sit out the 2018-19 season due to NCAA Transfer Rule

| | | | | | | | | | | | | |
|---|---|---------------|-----|-----|-----|-----|-----|-----|------|------|------|---|
| G | 3 | Ashley Taylor | 5-8 | Jr. | 5-0 | 0.2 | 0.0 | 0.0 | .000 | .000 | .500 | - |
|---|---|---------------|-----|-----|-----|-----|-----|-----|------|------|------|---|

NOTE: Has appeared in 25 career games in career.

| | | | | | | | | | | | | |
|-----|---|-------------|-----|-----|------|-----|-----|-----|------|------|------|-------|
| G/F | 5 | Misha Jones | 5-9 | Sr. | 28-3 | 3.8 | 1.9 | 1.1 | .425 | .339 | .900 | 5 stl |
|-----|---|-------------|-----|-----|------|-----|-----|-----|------|------|------|-------|

NOTE: Scored a career-high 12 points in the triple-overtime win at Drexel (3/1)

| | | | | | | | | | | | | |
|---|----|-----------------|------|-------|------|-----|-----|-----|------|------|------|--------|
| G | 12 | Harper Birdsong | 5-10 | R-So. | 28-4 | 9.4 | 2.9 | 1.0 | .389 | .391 | .727 | 18 stl |
|---|----|-----------------|------|-------|------|-----|-----|-----|------|------|------|--------|

NOTE: First player off of the bench; Scored a career-high 18 at ODU (12/5).

| | | | | | | | | | | | | |
|---|----|-------------|-----|-----|------|-----|-----|-----|------|------|------|--------|
| F | 15 | Emma Krause | 6-2 | Fr. | 28-3 | 4.1 | 2.0 | 0.6 | .358 | .337 | .571 | 12 blk |
|---|----|-------------|-----|-----|------|-----|-----|-----|------|------|------|--------|

NOTE: Been in double-figures twice this season; Had a career-high 14 points against Howard.

| | | | | | | | | | | | | |
|---|----|----------------|-----|-----|------|-----|-----|-----|------|------|------|-------|
| C | 20 | Chandler Smith | 6-3 | Sr. | 12-1 | 0.2 | 1.3 | 0.1 | .333 | .000 | .250 | 4 blk |
|---|----|----------------|-----|-----|------|-----|-----|-----|------|------|------|-------|

NOTE: Named a team captain for the season; Appeared in 65 career games.

| | | | | | | | | | | | | |
|-----|----|----------------|-----|-----|------|-----|-----|-----|------|------|------|-------|
| G/F | 21 | Bailey Eichner | 6-1 | So. | 18-0 | 0.7 | 1.4 | 0.4 | .313 | .200 | .250 | 3 stl |
|-----|----|----------------|-----|-----|------|-----|-----|-----|------|------|------|-------|

NOTE: Scored a career-high five vs. JMU (2/24); Had a career-high six rebounds at ODU (12/5)

| | | | | | | | | | | | | |
|---|----|-----------------|-----|-----|-----|-----|-----|-----|------|------|------|---|
| C | 32 | Caroline Stover | 6-3 | Fr. | 2-0 | 0.0 | 0.0 | 0.0 | .000 | .000 | .000 | - |
|---|----|-----------------|-----|-----|-----|-----|-----|-----|------|------|------|---|

NOTE: Ranked as the No. 131 recruit in her class on BlueStar

W&M INDIVIDUAL SUPERLATIVES

| Double-Digt Games | 16-17 | 17-18 | 18-19 | Career | Double-Doubles | 16-17 | 17-18 | 18-19 | Career |
|-------------------|-------|-------|-------|--------|-------------------|-------|-------|-------|--------|
| Bianca Boggs | 8 | 25 | 24 | 66 | Bianca Boggs | - | 1 | 4 | 6 |
| Victoria Reynolds | 4 | 15 | 18 | 37 | Victoria Reynolds | - | 1 | 1 | 2 |
| Eva Hodgson | - | - | 15 | 15 | Nyla Pollard | - | - | 1 | 1 |
| Harper Birdsong | - | - | 15 | 15 | Gabby Rogers | - | - | 1 | 1 |
| Nyla Pollard | - | 3 | 1 | 4 | | | | | |
| Gabby Rogers | - | - | 4 | 4 | | | | | |
| Emma Krause | - | - | 2 | 2 | | | | | |
| Misha Jones | - | - | 1 | 1 | | | | | |

Leading Scorer (times): - Boggs (18), Hodgson (6), Birdsong (3), Reynolds (3)

Leading Rebounder (times): - Boggs (14), Reynolds (11), Rogers (3), Eichner (1), Hodgson (1), Jones (1), Pollard (1)

Leading Assists (times): - Boggs (16), Hodgson (9), Pollard (4), Reynolds (2), Birdsong (2), Jones (1)

Charges (times): - Jones (14), Hodgson (10), Rogers (7), Eichner (6), Birdsong (1), Boggs (1)

Three-Point Plays (Made/Attempted): - Birdsong (3/3), Krause (2/2), Rogers (2/2), Jones (1/1), Underwood (1/1) Boggs (17/20), Hodgson (2/3), Reynolds (1/3), Pollard (0/2)

Four-Point Plays (Made/Attempted): - Jones (1/1)

Team

| | | |
|--|-------------------|---|
| W&M scored 80+ points | 1/27/2019 | 80 (80-69, W at Towson) |
| W&M scored 85+ points | 11/12/2018 | 88 (88-75, W vs. Howard) |
| W&M scored 90+ points | 12/2/2017 | 92 (92-86, W at St. Francis (Pa.)) |
| W&M scored 95+ points | 2/16/2014 | 97 (97-44 W, vs. UNCW) |
| Opponent scored 80+ | 2/22/2019 | 82 (75-82 L, vs. Towson) |
| Opponent scored 85+ | 2/2/2017 | 86 (41-86, L vs. James Madison) |
| Opponent scored 90+ | 11/17/2017 | 92 (92-81 L, at St. John's) |
| W&M grabbed 50+ rebounds | 11/27/2018 | 58 (63-43 W, vs. East Carolina) |
| W&M grabbed 60+ rebounds | 12/21/2006 | 60 (73-58 W, at Norfolk State) |
| Held an Opponent to 50 pts. or less | 12/21/2018 | 44 (55-44, W at Norfolk State) |
| Held an Opponent to 40 pts. or less | 12/3/2016 | 39 (67-39, W vs. Richmond) |
| W&M was held under 50 pts. | 1/25/2019 | 48 (48-65 L, at James Madison) |
| Shot 50% from the field | 3/7/2019 | 64.3% (27-for-42) (71-75, L vs. Northeastern) |
| Shot 60% from the field | 3/7/2019 | 64.3% (27-for-42) (71-75, L vs. Northeastern) |
| Shot 80-89% from the foul line (8 or more attempts) | 2/24/2019 | 87.5% (14-for-16) (65-78, L vs. James Madison) |
| Shot 90-99% from the foul line (8 or more attempts) | 2/9/2018 | 90.0 (9-for-10) (59-68, L at Delaware) |
| Shot 100% from the foul line (8 or more attempts) | 1/25/2019 | 100% (16-for-16) (48-65, L at James Madison) |
| Had a 20-pt. win | 11/27/2018 | 20 (63-43 W, vs. East Carolina) |
| Had a 30-pt. win | 11/28/2016 | 34 (W, 82-48 vs. Delaware State) |
| Had a 40-pt. win | 2/16/2014 | 53 (97-44 W, vs. UNCW) |
| Had a 50-pt. win | 2/16/2014 | 53 (97-44 W, vs. UNCW) |
| Had a 20-pt. loss | 3/1/2018 | 21 (L, 61-82 at Elon) |
| Had a 30-pt. loss | 2/2/2018 | 45 (L, 41-86 vs. James Madison) |
| An overtime win | 3/1/2019 | 77-72, W at Drexel (3ot) |
| An overtime loss | 2/8/2019 | 77-79, L at Charleston (2ot) |
| A double-overtime game | 2/8/2019 | 77-79, L at Charleston (2ot) |
| A triple-overtime game | 3/1/2019 | 77-72, W at Drexel (3ot) |
| 10-game winning streak | 2016-17 | 11 (11/18/2016-1/6/17) |
| 5-game winning streak | 2017-18 | 7 (11/21/2017-12/21/2017) |
| 5-game losing streak | 2017-18 | 7 (2/16/2018-11/12/2018) |
| 10-game losing streak | 2012-13 | 11 (11/25/2012-1/20/2013) |

Individual

| | |
|---|--|
| 20-24 pts. | 24, Eva Hodgson at UNCW, 2/10/19 |
| 25-29 pts. | 25, Bianca Boggs vs. UNCW, 1/11/19 |
| 30-34 pts. | 32 Bianca Boggs at Drexel, 3/1/19 |
| 35-39 pts. | 39, Lynn Norenberg at Virginia Wesleyan, 11/15/80 |
| 40+ pts. | 53, Bebe Fisher vs. Norfolk Division, 2/13/52 |
| 5 players in double figures | Bianca Boggs (26), Victoria Reynolds (15), Abby Rendle (12), Nari Garner (11), Jenna Green (10) vs. College of Charleston, 1/26/18 |
| Two players with 20 pts. or more | Jenna Green (22) and Bianca Boggs (21) at Towson, 2/4/18 |
| Player with 10-14 rebounds | 10, Bianca Boggs at UNCW, 2/10/19 |
| Player with 15-19 rebounds | 15, Victoria Reynolds vs. East Carolina, 11/27/18 |
| Player with 20 or more rebounds | 21, Emily Correia vs. George Mason, 3/16/13 |
| Two players with 10 or more rebounds | 15, Victoria Reynolds, 12, Nyla Pollard, & 11 Bianca Boggs vs. ECU, 11/27/18 |
| A player with a triple-double | Abby Rendle (25 pts, 17 reb, 10 blks) at East Carolina, 11/21/17 |
| A player with a double-double | Bianca Boggs (16 pts, 10 reb) at UNCW, 2/10/19 |
| Two players with double-doubles | Victoria Reynolds (15 pts, 15 reb) & Nyla Pollard (10 pts, 12 reb.) vs. ECU, 11/27/18 |
| 100% from the field (min. 5 made) | 5-for-5 Gabby Rogers vs. Northeastern, 3/7/19 |
| 100% from foul line (min. 5 made) | 8-for-8, Bianca Boggs vs. James Madison, 2/24/19 |
| 5-7 Assists | 7, Bianca Boggs & 5, Victoria Reynolds vs. Charleston, 3/7/19 |
| 8-9 Assists | 8, Bianca Boggs vs. Towson, 2/22/19 |
| 10+ Assists | 11, Jenna Green vs. College of Charleston, 1/26/18 |
| 5 or more steals | 5. Bianca Boggs at UNCW, 2/10/19 |
| 5-9 blocks | 6, Abby Rendle at Delaware, 2/9/18 |
| 10+ blocks | 11, Abby Rendle vs. College of Charleston, 1/26/18 |

BOLD - Happened in the 2018-19 season

**LIBBY UNDERWOOD**

So. • Guard • 5-9
Rye, New Hampshire

**SYDNEY WAGNER**

So. • Guard • 5-6
Phoenixville, Pa.

**BIANCA BOGGS**

Sr. • Guard • 5-5
Waldorf, Md.

**ASHLEY TAYLOR**

Jr. • Guard • 6-0
Charlottesville, Va.

**MISHA JONES**

Sr. • Guard/Forward • 5-9
Manassas Park, Va.

**EVA HODGSON**

Fr. • Guard • 5-9
Rindge, New Hampshire

**NYLA POLLARD**

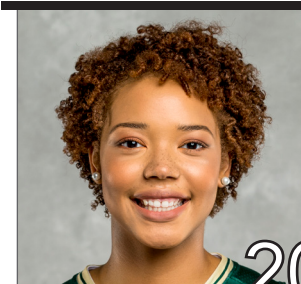
So. • Guard • 5-9
Virginia Beach, Va.

**HARPER BIRDSONG**

R-So. • Guard • 5-10
Suffolk, Va.

**EMMA KRUSE**

Jr. • Center • 6-3
Port Tobacco, Md.

**CHANDLER SMITH**

Sr. • Center • 6-3
Port Tobacco, Md.

**BAILEY EICHNER**

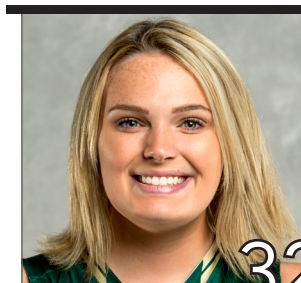
So. • Guard/Forward • 6-1
Cudahy, Wisc.

**GABBY ROGERS**

Fr. • Center • 6-1
Dallas, Texas

**VICTORIA REYNOLDS**

Jr. • Forward • 5-10
Fairfax, Va.

**CAROLINE STOVER**

Fr. • Center • 6-3
Plympton Mass.

**ED SWANSON**

Sixth Season at W&M
29th Overall

PRONUNCIATION GUIDE

Bailey **EICHNER** IKE-ner

Lynne **KOKOSKI**
Kah-kaw-ski

CHANEL Murchison Shh-nell



ED

SWANSON

HEAD COACH

29TH SEASON OVERALL

6TH SEASON AT W&M

PROFILE

Wife: Marion

Children: Connor and Matthew

Education

Sacred Heart, 1989

Coaching Career

Sacred Heart (1989-13)

William & Mary (2013-P)

CAREER HIGHLIGHTS

- Three NCAA Tournament Appearances
- Led W&M to 1st Division I Postseason berth in the WBI.
- Led W&M to a school record 20 wins in 2016-17
- 2016-17 VaSID Coach of the Year
- Six Postseason Appearances
- Four regular season conference championships and three postseason league titles
- 2009 New England Hall of Fame Inductee
- Eight 20-win seasons
- Five-time Conference Coach of the Year
- On five occasions, his teams have earned to the WBCA Academic Top 25 Team Honor

Ed Swanson enters his sixth season with the Green and Gold. He became the fifth Division I head women's basketball coach in William and Mary history on May 7, 2013. Prior to coming to Williamsburg, he spent 23 years transforming Sacred Heart University from a Division II program into a one of the top teams in the Northeast Conference. Swanson owns a career record of 464-327 (.587).

The success continued for the Tribe during the 2017-18 season. W&M won 16 games, which is tied for the fourth most in school history, and posted its second straight winning season for the first time since 2005-06 and 2006-07. His first recruiting class became the winningest class in school history with the team's victory over College of Charleston on Jan. 26. The seniors went onto win 66 games during their four year career. The Tribe raced out to an 11-2 start for the third straight season, which equaled the best 13-game start in school history, and led the CAA in blocked shots (218) and blocked shots per game (7.3), which ranked fourth and third in the NCAA, respectively. Both numbers are single-season school records. Individually, he mentored three players to five All-CAA awards, including All-CAA First-Team selection Bianca Boggs, who became the first Tribe player in a decade to be named to the league's first-team. Additionally, Boggs was named to the league's all-defensive team, while Abby Rendle claimed a spot on the All-CAA Third-Team, and All-Defensive Team, and freshman Nyla Pollard was picked to the CAA All-Rookie team.

Swanson led the Tribe to one of its best seasons in program history in 2016-17. The Tribe tied a school record with 20 wins, while winning a CAA Tournament game for the first time since 2009, and advancing to the CAA Semifinals for the first-time since 2001. Under his leadership, the Tribe won 11-straight games, which is the longest single-23056season streak in school history, from Nov. 18, 2016-Jan. 2, 2017. W&M had four players claim seven all-conference awards this season, including seniors Alexandra Masaquel and Marlena Tremba, who each earned second-team citations. Additionally, Masaquel was tabbed the Richmond Times-Dispatch All-State Second-Team, while Tremba earned VaSID All-State Second-Team honors. For his efforts, VaSID honored him as the Virginia State Coach of the Year.

Once again Swanson's third season was one for the record books. The Tribe raced out to its best start in school history with an 11-2 record. W&M went onto again to win the fourth most wins in school history with 15. For the second straight season the Tribe broke the blocks and assist record, by tying the single season assist record (466) and broke the school record for blocks with 148. During the season junior Marlena Tremba became the 15th player in school history to break the 1000-point barrier. Individually, four players earned All-CAA awards as junior Alexandra Masaquel was tabbed to the second-team and all-defensive team, Tremba earned third-team honors, and freshman Bianca Boggs picked up a spot on the all-rookie team. The Tribe was also rewarded for its hard work in the classroom as Masaquel, Tremba, and sophomore Jenna Green earned all-academic team honors.

Swanson's second year with the Green and Gold was one for the record books. The Tribe racked up 15 wins, the fourth-most in school history, on its way to its first-ever postseason appearances with bid in the Women's Basketball Invitational. The Green and Gold had a seven-win turnaround, while setting three school records for assists (466), blocked shots, (143), blocked shots per game (4.5). Individually he helped lead four players to five All-CAA awards. Sophomore Marlena Tremba was named to the All-CAA Third-Team, senior Jazmen Boone was named to the All-Defensive Team, freshman Abby Rendle to the All-Rookie and All-Defensive team, and senior Kyla Kerstetter earned all-academic honors.

In his first season with the Tribe, Swanson led a young team to eight victories in a seven-seed in the CAA Tournament. The Green and Gold finished in the top 10 nationally in steals per game, while Jazmen Boone also ranked in the top 20 in the NCAA in the same category. Under his guidance Kaitlyn Mathieu garnered Third-Team All-Colonial Athletic Association honors, and went on to sign a professional contract with a team in Germany. In addition, guard Marlena Tremba went onto win CAA Rookie of the Year, and was named to the all-rookie squad. Boone was named to the all-defensive team, while she and Kyla Kerstetter took home all-academic honors.

Swanson oversaw Sacred Heart's transition from Division II to Division I in 1999-00, and the program took off under his direction. Over Sacred Heart's 14 years in Division I, Swanson led SHU



to a 280-145 record (.664), including a 190-62 (.754) record in the NEC. He departed as the NEC's all-time winningest head coach with all of his SHU teams finishing third or higher in the league standings. Swanson-lead teams have posted 13 straight winning seasons and 12 straight campaigns with 18 or more victories, including six with 20 or more wins. In 2009, he was inducted into the New England Basketball Hall of Fame.

In total, Swanson-coached players earned 19 All-NEC honors, including nine first-team awards, nine NEC All-Tournament Team honors, eight NEC All-Rookie Team selections, four NEC Rookies of the Year, three NEC Tournament MVPs and three NEC Players of the Year.

His teams have also enjoyed success in the classroom. On five occasions, the Pioneers were selected to the Women's Basketball Coaches Association (WBCA) Academic Top 25 Team Honor Roll, which has recognized outstanding academic performances from the top teams in each of the five collegiate divisions since 1995-96. On eight occasions since 2003, one of his players was a CoSIDA Academic All-District selection and two Pioneer players were named NEC Scholar-Athlete of the Year.

In 2012-13, Swanson led Sacred Heart to its third straight postseason appearance, and in the process, recorded his 400th career victory. His milestone win came on Feb. 12, 2013 as the Pioneers defeated Fairleigh Dickinson. SHU completed the season at 22-11, finishing second in the NEC with a 13-5 ledger and garnering a berth in the program's first Women's National Invitational Tournament (WNIT).

Sacred Heart claimed its third NEC Championship and advanced to the NCAA Tournament in 2011-12. The Pioneers also ranked 23rd nationally in the WBCA Academic Top 25 Team Honor Roll with a team GPA of 3.35. SHU compiled a season mark to 25-8, winning both the regular season and postseason crowns in the league as Swanson was named NEC Coach of the Year for the fourth time.

The Pioneers earned a berth in the 2011 Women's Basketball Invitational and finished the year at 18-13 with a 12-6 mark in the NEC. After a 0-5 start to the 2008-09 season, Swanson's Pioneers reeled off a 21-game winning streak, the longest in school history and second longest in the country, before finishing with 25-8 record. SHU completed the NEC regular season with a perfect 18-0 mark, becoming just the third team in the history of the conference to accomplish the feat. Swanson earned NEC Coach of the Year honors as Sacred Heart finished off an amazing season by capturing its second league title and trip to the NCAA Tournament over a four-year span. During the 2008-09 season, Swanson moved past former Mount St. Mary's head coach Bill Sheahan (124) as all-time leader in Northeast Conference wins and eclipsing the 300-win plateau in his career.

The 2005-06 season saw Swanson lead the Sacred Heart program to its first NCAA Tournament, capturing the NEC Championship in just its seventh season at the Division I level. Swanson guided the Pioneers to a school record 26-5 record, including a 16-2 NEC ledger. He also garnered career victory No. 250 during the season.

Under his leadership, Sacred Heart was one of the toughest teams on its home court, the William H. Pitt Center, which opened in 1997. During the Pitt Center's opening 16 seasons, Swanson's teams won 81.9 percent (185-41) of its home games. In 2011-12, SHU went 15-1 at home, a season bested only by a perfect 15-0 in 2005-06 and 14-0 in 2003-04. During the stretch, the Pioneers' home winning percentage at the Pitt Center ranked among the best nationally.

After directing the Pioneers to a 20-7 record — the program's first 20-win season — in 1995-96, Swanson was voted Coach of the Year in the New England Collegiate Conference (NECC) and the Women's Basketball Coaches Association's (WBCA) District I.

Swanson took the reins of the Sacred Heart University women's basketball program in 1990 and built the Pioneers into one of the top teams in the Northeast. He joined Dave Bike's men's basketball coaching staff at SHU in 1989, and, after becoming head coach of the Pioneer women's program in 1990, did double duty for three seasons before becoming the University's first full-time women's coach in 1993. Prior to Swanson's arrival,

CAREER RECORD

| YEAR | OVERALL RECORD | CONF. RECORD | CONF. FINISH | POST SEASON |
|------------|-------------------|-------------------|--------------|-------------|
| 1990-91 | 8-19 | 3-11 | 7th | |
| 1991-92 | 11-16 | 5-9 | T5th | |
| 1992-93 | 16-13 | 7-7 | 4th | |
| 1993-94 | 12-15 | 8-8 | 5th | |
| 1994-95 | 11-16 | 7-9 | 5th | |
| 1995-96 | 20-7 | 16-4 | T2nd | |
| 1996-97 | 14-14 | 10-8 | 5th | |
| 1997-98 | 19-7 | 13-3 | 2nd | |
| 1998-99 | 15-12 | 12-6 | 3rd | |
| 1999-00 | 14-14 | 11-7 | T3rd | |
| 2000-01 | 15-14 | 11-7 | T3rd | |
| 2001-02 | 18-11 | 13-5 | T2nd | |
| 2002-03 | 18-10 | 12-6 | T3rd | |
| 2003-04 | 21-8 | 14-4 | 2nd | |
| 2004-05 | 18-11 | 14-4 | 2nd | |
| 2005-06 | 26-5 | 16-2 | 1st | NCAA |
| 2006-07 | 22-10 | 15-3 | T1st | |
| 2007-08 | 19-11 | 14-4 | 3rd | |
| 2008-09 | 25-8 | 18-0 | 1st | NCAA |
| 2009-10 | 19-11 | 14-4 | 3rd | |
| 2010-11 | 18-13 | 12-6 | T3rd | WBI |
| 2011-12 | 25-8 | 15-3 | 1st | NCAA |
| 2012-13 | 22-11 | 13-5 | 2nd | WNIT |
| 2013-14 | 8-21 | 5-11 | 8th | |
| 2014-15 | 15-16 | 9-9 | 6th | WBI |
| 2015-16 | 15-15 | 6-12 | 7th | |
| 2016-17 | 20-11 | 9-9 | 4th | |
| 2017-18 | 16-14 | 7-11 | 6th | |
| 2018-19 | 13-15 | 6-11 | | |
| Career | 493-356 (.581) | 298-190 (.611) | | |
| Division I | 367-237 (.608) | 233-125 (.651) | | |
| W&M/CAA | 87-92 (.486) | 42-63 (.400) | | |

the Sacred Heart women's team compiled a 4-21 record. Under his guidance, the climb to Division II respectability was accomplished within three seasons, from 8-19 to 11-16 and, in 1992-93, to 16-13 — the program's first winning record in 11 seasons.

In his time at SHU, he was a four-time NEC Coach of the Year, led Sacred Heart to five postseason bids, including three NCAA Tournament appearances. Swanson guided the Pioneers to four NEC regular season crowns and three NEC tournament championships. SHU posted 20-win seasons seven times during his tenure, including five of the last eight years.

He earned a bachelor's degree in business from Sacred Heart in 1989. Also during his tenure at SHU, Swanson served as the moderator for the Pioneer Student-Athlete Council from 1998-01 and was the annual coordinator of commencement exercises since 2000. Swanson and his wife, Marion, have two sons, Connor and Matthew.



#0 LIBBY UNDERWOOD

SOPHOMORE - GUARD

RYE, N.H. - PORTSMOUTH

>> UNDERWOOD'S CAREER HIGHS

MINUTES

Season 13 vs. VCU, 11/6/18
Career 15 vs. USC Upstate, 12/5/17

POINTS

Season 6 vs. VCU, 11/6/18
Career 8 vs. USC Upstate, 12/5/17

REBOUNDS

Season 2 at James Madison, 1/25/19
Career 3 at Northeastern, 1/21/18

FIELD GOALS

Season 3 vs. VCU, 11/6/18
Career 3 vs. VCU, 11/6/18

3-POINT FIELD GOALS

Season -
Career 1 (3x) last time vs. Upstate 12/5/17

FREE THROWS

Season 1 (3x) last time at UD, 3/3/19
Career 5 vs. USC Upstate, 12/5/17

ASSISTS

Season 1 (2x) last time at JMU, 1/25/19
Career 3 vs. USC Upstate, 12/5/17

STEALS

Season 1 at Old Dominion, 12/8/18
Career 1 (3x) last time at ODU, 12/8/18

BLOCKS

Season 1 vs. VCU, 11/6/18
Career 1 vs. VCU, 11/6/18

MISCELLANEOUS

Career in Double Figures 0
2018-19 in Double Figures 0

>> 2018-19 GAME-BY-GAME

| Opp | Date | GS | Min | FG-A | 3FG-A | FTA | Reb. | A | TO | BLK | STL | PTS |
|---------|-------|----|------------------------|------|-------|-----|------|---|----|-----|-----|-----|
| VCU | 11/6 | 14 | 3-4 | 0-1 | 0-0 | 0 | 1 | 1 | 0 | 1 | 6 | |
| HOW | 11/12 | 2 | 0-1 | 0-0 | 0-0 | 1 | 0 | 0 | 0 | 0 | 0 | |
| at Loy | 11/17 | 11 | 0-1 | 0-0 | 0-0 | 0 | 0 | 0 | 0 | 0 | 0 | |
| at DC | 11/24 | 6 | 0-1 | 0-1 | 0-0 | 0 | 0 | 0 | 0 | 0 | 0 | |
| ECU | 11/27 | | DNP - COACH'S DECISION | | | | | | | | | |
| at Hart | 11/30 | 2 | 0-0 | 0-0 | 0-0 | 0 | 0 | 0 | 0 | 0 | 0 | |
| at Fair | 12/2 | | DNP - COACH'S DECISION | | | | | | | | | |
| UOFR | 12/5 | 1 | 1-1 | 0-0 | 0-0 | 0 | 0 | 0 | 0 | 0 | 2 | |
| at ODU | 12/8 | 10 | 0-1 | 0-0 | 1-2 | 0 | 0 | 2 | 0 | 1 | 1 | |
| at NSU | 12/21 | 5 | 0-0 | 0-0 | 0-0 | 0 | 0 | 2 | 0 | 0 | 0 | |
| GW | 12/28 | 3 | 0-0 | 0-0 | 0-0 | 0 | 0 | 0 | 0 | 0 | 0 | |
| at Hof | 1/4 | | DNP - COACH'S DECISION | | | | | | | | | |
| at NU | 1/6 | 8 | 0-1 | 0-1 | 1-2 | 0 | 0 | 1 | 0 | 0 | 1 | |
| UNCW | 1/11 | | DNP - COACH'S DECISION | | | | | | | | | |
| COFC | 1/13 | | DNP - COACH'S DECISION | | | | | | | | | |
| ELON | 1/20 | | DNP - COACH'S DECISION | | | | | | | | | |
| at JMU | 1/25 | 2 | 0-2 | 0-0 | 0-0 | 2 | 1 | 0 | 0 | 0 | 0 | |
| at Tow | 1/27 | | DNP - COACH'S DECISION | | | | | | | | | |
| DEL | 2/1 | | DNP - COACH'S DECISION | | | | | | | | | |
| DU | 2/3 | 3 | 0-1 | 0-0 | 0-0 | 0 | 0 | 0 | 0 | 0 | 0 | |
| at CofC | 2/8 | | DNP - COACH'S DECISION | | | | | | | | | |
| at UNCW | 2/10 | | DNP - COACH'S DECISION | | | | | | | | | |
| at Elon | 2/17 | | DNP - COACH'S DECISION | | | | | | | | | |
| TOW | 2/22 | | DNP - COACH'S DECISION | | | | | | | | | |
| JMU | 2/24 | | DNP - COACH'S DECISION | | | | | | | | | |
| at DU | 3/1 | 2 | 0-0 | 0-0 | 0-0 | 0 | 0 | 0 | 0 | 0 | 0 | |
| at DEL | 3/3 | 2 | 1-1 | 0-0 | 1-1 | 1 | 0 | 0 | 0 | 0 | 3 | |
| NU | 3/7 | | DNP - COACH'S DECISION | | | | | | | | | |

>> UNDERWOOD'S CAREER STATISTICS

| Season | GP | GS | Min/Avg | FG-FGA | Pct | 3pt-Att | Pct | FT-FTA | Pct | Off | Def | Reb | Avg | PF | FO | A | TO | Blk | S | TP | Avg |
|---------------|-----------|----------|----------------|--------------|-------------|-------------|-------------|--------------|-------------|----------|-----------|-----------|------------|-----------|----------|-----------|-----------|----------|----------|-----------|------------|
| 2017-18 | 27 | 0 | 162/6.0 | 6-30 | .200 | 3-15 | .200 | 14-22 | .636 | 2 | 14 | 16 | 0.6 | 10 | 0 | 8 | 21 | 0 | 2 | 29 | 1.1 |
| 2018-19 | 14 | 0 | 69/4.9 | 5-14 | .357 | 0-3 | .000 | 3-5 | .600 | 4 | 0 | 4 | 0.3 | 1 | 0 | 2 | 6 | 1 | 1 | 13 | 0.9 |
| CAREER | 41 | 0 | 231/5.6 | 11-44 | .250 | 3-18 | .167 | 17-27 | .630 | 6 | 14 | 20 | 0.5 | 11 | 0 | 10 | 27 | 1 | 3 | 42 | 1.0 |



#2 BIANCA BOGGS

SENIOR - GUARD

WALDORF, MD. - ST. MARY'S RYKEN

>> BOGGS' CAREER HIGHS

MINUTES

Season 52 at Drexel, 3/1/19
Career 52 at Drexel, 3/1/19

POINTS

Season 32 at Drexel, 3/1/19
Career 33 at St. Francis (Pa.), 12/2/17

REBOUNDS

Season 11 (3x) last time at JMU, 1/25/19
Career 11 (4x) last time at JMU, 1/25/19

FIELD GOALS

Season 11 at Drexel, 3/1/19
Career 12 at St. Francis (Pa.), 12/2/17

3-POINT FIELD GOALS

Season 4 (2x) last time vs. CofC, 1/13/19
Career 4 (4x) last time vs. CofC, 1/13/19

FREE THROWS

Season 8 (2x) last time at Drexel, 3/1/19
Career 8 (4x) last time at Drexel, 3/1/19

ASSISTS

Season 8 vs. Towson, 2/22/19
Career 8 (2x) last time vs. Tow., 2/22/19

STEALS

Season 6 at Hartford, 11/30/18
Career 7 vs. Charleston, 1/26/18

BLOCKS

Season 3 vs. GW, 12/28/18
Career 4 vs. Hofstra, 1/28/18

MISCELLANEOUS

Career in Double Figures 66
2018-19 in Double Figures 24

>> 2018-19 GAME-BY-GAME

| Opp | Date | GS | Min | FG-A | 3FG-A | FT-A | Reb. | A | TO | BLK | STL | PTS |
|---------|-------|----|-----|-------|-------|------|------|---|----|-----|-----|-----|
| VCU | 11/6 | * | 34 | 6-16 | 1-3 | 2-3 | 6 | 4 | 3 | 1 | 5 | 16 |
| HOW | 11/12 | * | 35 | 10-22 | 1-5 | 5-5 | 9 | 7 | 4 | 0 | 1 | 26 |
| at Loy | 11/17 | * | 35 | 5-9 | 2-4 | 2-2 | 5 | 3 | 1 | 0 | 0 | 14 |
| at DC | 11/24 | * | 36 | 6-12 | 1-3 | 5-5 | 10 | 7 | 9 | 2 | 3 | 18 |
| ECU | 11/27 | * | 37 | 4-11 | 0-3 | 1-2 | 11 | 5 | 6 | 1 | 1 | 9 |
| at Hart | 11/30 | * | 39 | 3-15 | 1-5 | 5-6 | 6 | 2 | 4 | 0 | 6 | 12 |
| at Fair | 12/2 | * | 37 | 8-12 | 2-4 | 4-8 | 5 | 2 | 7 | 0 | 3 | 22 |
| UOFR | 12/5 | * | 32 | 2-7 | 0-0 | 1-2 | 1 | 6 | 3 | 2 | 2 | 8 |
| at ODU | 12/8 | * | 24 | 7-15 | 0-3 | 3-3 | 3 | 2 | 2 | 0 | 3 | 17 |
| at NSU | 12/21 | * | 33 | 4-10 | 0-2 | 2-5 | 8 | 4 | 6 | 1 | 4 | 10 |
| GW | 12/28 | * | 34 | 10-16 | 3-5 | 3-3 | 10 | 3 | 3 | 3 | 2 | 26 |
| at Hof | 1/4 | * | 39 | 7-14 | 1-4 | 7-7 | 10 | 3 | 6 | 1 | 0 | 22 |
| at NU | 1/6 | * | 25 | 6-15 | 4-7 | 5-6 | 6 | 4 | 2 | 0 | 3 | 21 |
| UNCW | 1/11 | * | 36 | 8-16 | 2-5 | 7-9 | 6 | 2 | 2 | 2 | 2 | 25 |
| COFC | 1/13 | * | 39 | 6-16 | 4-8 | 2-8 | 8 | 4 | 5 | 0 | 2 | 18 |
| ELON | 1/20 | * | 27 | 4-8 | 1-2 | 4-6 | 3 | 3 | 1 | 0 | 0 | 13 |
| at JMU | 1/25 | * | 33 | 2-18 | 0-3 | 4-4 | 11 | 3 | 3 | 9 | 1 | 8 |
| at Tow | 1/27 | * | 33 | 7-17 | 3-6 | 5-11 | 7 | 3 | 4 | 0 | 3 | 22 |
| DEL | 2/1 | * | 37 | 2-9 | 1-2 | 6-8 | 8 | 5 | 6 | 1 | 1 | 11 |
| DREXEL | 2/3 | * | 39 | 6-10 | 1-2 | 4-5 | 9 | 3 | 3 | 1 | 1 | 17 |
| at CofC | 2/8 | * | 48 | 9-19 | 0-3 | 5-8 | 6 | 4 | 9 | 2 | 5 | 23 |
| at UNCW | 2/10 | * | 38 | 7-15 | 1-5 | 1-3 | 10 | 3 | 5 | 1 | 5 | 16 |
| at Elon | 2/17 | * | 39 | 5-11 | 1-6 | 2-2 | 9 | 4 | 5 | 2 | 2 | 13 |
| TOW | 2/22 | * | 33 | 5-12 | 1-2 | 7-9 | 3 | 8 | 4 | 3 | 1 | 18 |
| JMU | 2/24 | * | 34 | 3-8 | 2-5 | 8-8 | 6 | 7 | 3 | 0 | 2 | 16 |
| at DU | 3/1 | * | 51 | 11-14 | 2-5 | 8-10 | 5 | 5 | 8 | 2 | 3 | 32 |
| at Del | 3/3 | * | 36 | 4-12 | 1-4 | 0-0 | 8 | 6 | 3 | 1 | 4 | 9 |
| NU | 3/7 | * | 39 | 5-6 | 2-3 | 5-5 | 5 | 7 | 9 | 0 | 1 | 17 |

>> BOGGS' CAREER STATISTICS

| Season | GP | GS | Min/Avg | FG-FGA | Pct | 3pt-Att | Pct | FT-FTA | Pct | Off | Def | Reb | Avg | PF | FO | A | TO | Blk | S | TP | Avg |
|---------------|------------|------------|------------------|-----------------|-------------|----------------|-------------|----------------|-------------|------------|------------|------------|------------|------------|----------|------------|------------|-----------|------------|-------------|-------------|
| 2015-16 | 30 | 24 | 802/26.7 | 68-233 | .292 | 17-56 | .304 | 70-102 | .686 | 38 | 57 | 95 | 3.2 | 81 | 5 | 45 | 55 | 10 | 56 | 223 | 7.4 |
| 2016-17 | 31 | 26 | 734/23.7 | 82-214 | .383 | 22-74 | .297 | 60-76 | .789 | 44 | 65 | 109 | 3.5 | 60 | 0 | 60 | 76 | 17 | 54 | 246 | 7.9 |
| 2017-18 | 30 | 30 | 907/30.2 | 156-373 | .418 | 41-129 | .318 | 103-139 | .741 | 46 | 91 | 137 | 4.6 | 85 | 1 | 88 | 111 | 24 | 65 | 456 | 15.2 |
| 2018-19 | 28 | 28 | 1006/35.9 | 162-368 | .440 | 39-114 | .342 | 115-155 | .742 | 37 | 157 | 194 | 6.9 | 66 | 3 | 119 | 125 | 25 | 68 | 478 | 17.1 |
| CAREER | 119 | 108 | 3449/29.0 | 468-1188 | .394 | 119-373 | .319 | 348-472 | .737 | 165 | 370 | 535 | 4.5 | 292 | 9 | 312 | 367 | 76 | 243 | 1403 | 11.8 |



#3 ASHLEY TAYLOR

JUNIOR - GUARD

CHARLOTTESVILLE, VA. - ST. ANNE'S-BELFIELD

>> TAYLOR'S CAREER HIGHS

| MINUTES | | | FREE THROWS | | |
|---------------------|---|--------------------------------|---------------------------|---|----------------------------------|
| Season | 6 | vs. GW, 12/28/18 | Season | 1 | vs. GW, 12/28/18 |
| Career | 9 | vs. USC Upstate, 12/5/17 | Career | 1 | vs. GW, 12/28/18 |
| POINTS | | | ASSISTS | | |
| Season | 1 | vs. GW, 12/28/18 | Season | - | - |
| Career | 3 | vs. USC Upstate, 12/5/17 | Career | 1 | (4x) last time at CofC, 12/29/17 |
| REBOUNDS | | | STEALS | | |
| Season | - | - | Season | - | - |
| Career | 2 | vs. Loyola, 11/25/17 | Career | 1 | vs. Davidson, 11/27/17 |
| FIELD GOALS | | | BLOCKS | | |
| Season | - | - | Season | - | - |
| Career | 1 | (2x) last time at Elon, 3/1/18 | Career | - | - |
| 3-POINT FIELD GOALS | | | MISCELLANEOUS | | |
| Season | - | - | Career in Double Figures | 0 | |
| Career | 1 | vs. USC Upstate, 12/5/17 | 2018-19 in Double Figures | 0 | |

>> TAYLOR'S CAREER STATISTICS

| Season | GP | GS | Min/Avg | FG-FGA | Pct | 3pt-Att | Pct | FT-FTA | Pct | Off | Def | Reb | Avg | PF | FO | A | TO | Blk | S | TP | Avg |
|---------------|-----------|----------|---------------|-------------|-------------|-------------|-------------|------------|-------------|----------|----------|-----------|------------|----------|----------|----------|----------|----------|----------|----------|------------|
| 2016-17 | 7 | 0 | 22/3.1 | 0-6 | .000 | 0-4 | .000 | 0-0 | .000 | 1 | 2 | 3 | 0.4 | 0 | 0 | 2 | 1 | 0 | 0 | 0 | 0.0 |
| 2017-18 | 13 | 0 | 32/2.5 | 2-9 | .222 | 1-3 | .333 | 0-0 | .000 | 0 | 7 | 7 | 0.5 | 1 | 0 | 2 | 4 | 0 | 1 | 5 | 0.4 |
| 2018-19 | 5 | 0 | 13/2.6 | 0-4 | .000 | 0-4 | .000 | 1-2 | .500 | 0 | 0 | 0 | 0.0 | 0 | 0 | 0 | 0 | 0 | 0 | 1 | 0.3 |
| CAREER | 25 | 0 | 67/2.7 | 2-20 | .105 | 1-11 | .091 | 1-2 | .500 | 1 | 9 | 10 | 0.4 | 1 | 0 | 4 | 5 | 0 | 1 | 6 | 0.3 |

>> 2018-19 GAME-BY-GAME

| Opp | Date | GS | Min | FG-A | 3FG-A | FT-A | Reb. | A | TO | BLK | STL | P |
|---------|-------|----|-----|------|-------|------|------|---|----|-----|-----|---|
| VCU | 11/6 | | | | | | | | | | | |
| HOW | 11/12 | | | | | | | | | | | |
| at Loy | 11/17 | 1 | 0-0 | 0-0 | 0-0 | 0 | 0 | 0 | 0 | 0 | 0 | 0 |
| at DC | 11/24 | | | | | | | | | | | |
| ECU | 11/27 | | | | | | | | | | | |
| at Hart | 11/30 | | | | | | | | | | | |
| at Fair | 12/2 | | | | | | | | | | | |
| UOFR | 12/5 | | | | | | | | | | | |
| at ODU | 12/8 | 1 | 0-1 | 0-1 | 0-0 | 0 | 0 | 0 | 0 | 0 | 0 | 0 |
| at NSU | 12/21 | | | | | | | | | | | |
| GW | 12/28 | 6 | 0-3 | 0-2 | 1-2 | 0 | 0 | 0 | 0 | 0 | 1 | |
| at Hof | 1/4 | | | | | | | | | | | |
| at NU | 1/6 | | | | | | | | | | | |
| UNCW | 1/11 | | | | | | | | | | | |
| COFC | 1/13 | | | | | | | | | | | |
| ELON | 1/20 | | | | | | | | | | | |
| at JMU | 1/25 | 3 | 0-0 | 0-0 | 0-0 | 0 | 0 | 0 | 0 | 0 | 0 | 0 |
| at Tow | 1/27 | | | | | | | | | | | |
| DEL | 2/1 | | | | | | | | | | | |
| DREXEL | 2/3 | | | | | | | | | | | |
| at CofC | 2/8 | | | | | | | | | | | |
| at UNCW | 2/10 | | | | | | | | | | | |
| at Elon | 2/17 | | | | | | | | | | | |
| TOW | 2/22 | | | | | | | | | | | |
| JMU | 2/24 | | | | | | | | | | | |
| at DU | 3/1 | | | | | | | | | | | |
| at Del | 3/3 | 3 | 0-0 | 0-0 | 0-0 | 0 | 0 | 0 | 0 | 0 | 0 | 0 |
| NU | 3/7 | | | | | | | | | | | |



#5 MISHA JONES

SENIOR - GUARD/FORWARD

MANASSAS PARK, VA. - BATTLEFIELD

>> JONES' CAREER HIGHS

| MINUTES | | | FREE THROWS | | |
|---------------------|----|--------------------|---------------------------|---|----------------------------------|
| Season | 41 | at Drexel, 3/1/19 | Season | 6 | at Towson, 1/27/19 |
| Career | 41 | at Drexel, 3/1/19 | Career | 6 | at Towson, 1/27/19 |
| POINTS | | | ASSISTS | | |
| Season | 12 | at Drexel, 3/1/19 | Season | 4 | at Old Dominion, 12/8/18 |
| Career | 12 | at Drexel, 3/1/19 | Career | 4 | (3x) last time at ODU, 12/8/18 |
| REBOUNDS | | | STEALS | | |
| Season | 8 | at Towson, 1/27/19 | Season | 2 | (2x) last time at Drexel, 3/1/19 |
| Career | 8 | at Towson, 1/27/19 | Career | 2 | (3x) last time at Drexel, 3/1/19 |
| FIELD GOALS | | | BLOCKS | | |
| Season | 4 | at Drexel, 3/1/19 | Season | 1 | (7x) last time vs. NU, 3/7/19 |
| Career | 4 | at Drexel, 3/1/19 | Career | 1 | (8x) last time vs. NU, 3/7/19 |
| 3-POINT FIELD GOALS | | | MISCELLANEOUS | | |
| Season | 3 | vs. UNCW, 1/11/19 | Career in Double Figures | 1 | |
| Career | 3 | vs. UNCW, 1/11/19 | 2018-19 in Double Figures | 1 | |

>> 2018-19 GAME-BY-GAME

| Opp | Date | GS | Min | FG-A | 3FG-A | FT-A | Reb. | A | TO | BLK | STL | P |
|---------|-------|----|-----|------|-------|------|------|---|----|-----|-----|---|
| VCU | 11/6 | 4 | 1-1 | 1-1 | 1-2 | 4 | 0 | 0 | 0 | 0 | 4 | |
| HOW | 11/12 | 14 | 3-5 | 2-4 | 1-1 | 3 | 2 | 2 | 1 | 0 | 9 | |
| at Loy | 11/17 | 13 | 2-4 | 0-2 | 1-2 | 2 | 1 | 0 | 0 | 0 | 5 | |
| at DC | 11/24 | 11 | 1-2 | 1-2 | 0-0 | 1 | 3 | 1 | 1 | 0 | 3 | |
| ECU | 11/27 | 9 | 0-3 | 0-3 | 0-0 | 2 | 0 | 0 | 0 | 0 | 0 | |
| at Hart | 11/30 | 12 | 1-2 | 1-1 | 0-0 | 4 | 1 | 0 | 0 | 0 | 3 | |
| at Fair | 12/2 | 8 | 0-1 | 0-1 | 0-0 | 1 | 0 | 0 | 0 | 0 | 0 | |
| UOFR | 12/5 | 6 | 0-0 | 0-0 | 0-0 | 1 | 0 | 1 | 0 | 0 | 0 | |
| at ODU | 12/8 | 13 | 2-5 | 0-1 | 0-0 | 4 | 4 | 1 | 0 | 0 | 4 | |
| at NSU | 12/21 | 8 | 0-1 | 0-1 | 0-0 | 0 | 0 | 1 | 0 | 1 | 0 | |
| GW | 12/28 | * | 12 | 1-2 | 0-0 | 2-2 | 1 | 0 | 1 | 0 | 4 | |
| at Hof | 1/4 | * | 6 | 1-1 | 1-1 | 0-0 | 1 | 1 | 0 | 0 | 3 | |
| at NU | 1/6 | * | 20 | 2-6 | 1-3 | 1-2 | 3 | 2 | 0 | 0 | 1 | |
| UNCW | 1/11 | 24 | 3-5 | 3-5 | 0-0 | 2 | 3 | 3 | 1 | 0 | 9 | |
| COFC | 1/13 | 19 | 2-5 | 2-4 | 0-0 | 2 | 2 | 1 | 0 | 0 | 6 | |
| ELON | 1/20 | 15 | 2-3 | 2-2 | 2-2 | 2 | 2 | 0 | 2 | 0 | 8 | |
| at JMU | 1/25 | 22 | 2-3 | 2-3 | 0-0 | 3 | 0 | 0 | 0 | 0 | 6 | |
| at Tow | 1/27 | 22 | 1-5 | 0-4 | 6-6 | 8 | 2 | 2 | 0 | 0 | 8 | |
| DEL | 2/1 | 20 | 1-2 | 1-2 | 0-0 | 2 | 0 | 3 | 0 | 0 | 3 | |
| DREXEL | 2/3 | 10 | 0-0 | 0-0 | 0-0 | 1 | 2 | 0 | 1 | 0 | 0 | |
| at CofC | 2/8 | 15 | 1-4 | 0-3 | 0-0 | 1 | 1 | 1 | 1 | 0 | 2 | |
| at UNCW | 2/10 | 5 | 0-1 | 0-1 | 0-0 | 0 | 0 | 0 | 0 | 0 | 0 | |
| at Elon | 2/17 | 4 | 0-0 | 0-0 | 0-0 | 1 | 0 | 0 | 0 | 0 | 0 | |
| TOW | 2/22 | 4 | 0-0 | 0-0 | 0-0 | 0 | 0 | 0 | 0 | 0 | 0 | |
| JMU | 2/24 | 16 | 1-5 | 0-4 | 2-2 | 1 | 0 | 2 | 0 | 0 | 4 | |
| at DU | 3/1 | 41 | 4-6 | 2-4 | 2-2 | 3 | 3 | 3 | 0 | 2 | 12 | |
| at Del | 3/3 | 16 | 2-6 | 0-3 | 0-0 | 2 | 3 | 1 | 1 | 0 | 4 | |
| NU | 3/7 | 6 | 1-2 | 0-1 | 0-0 | 2 | 0 | 1 | 1 | 0 | 2 | |

>> JONES' CAREER STATISTICS

| Season | GP | GS | Min/Avg | FG-FGA | Pct | 3pt-Att | Pct | FT-FTA | Pct | Off | Def | Reb | Avg | PF | FO | A | TO | Blk | S | TP | Avg |
|---------------|-----------|----------|----------------|---------------|-------------|---------------|-------------|--------------|-------------|-----------|-----------|------------|------------|-----------|----------|-----------|-----------|----------|-----------|------------|------------|
| 2015-16 | 27 | 0 | 180/6.7 | 12-36 | .333 | 5-20 | .250 | 7-10 | .700 | 1 | 16 | 17 | 0.6 | 15 | 0 | 8 | 9 | 0 | 4 | 36 | 1.3 |
| 2016-17 | | | | | | | | | | | | | | | | | | | | | |
| 2017-18 | 28 | 0 | 201/7.2 | 13-41 | .317 | 7-26 | .269 | 10-11 | .909 | 6 | 26 | 32 | 1.1 | 29 | 0 | 15 | 17 | 1 | 7 | 43 | 1.5 |
| 2018-19 | 28 | 3 | 375/13.4 | 34-80 | .425 | 19-56 | .339 | 18-20 | .900 | 14 | 39 | 53 | 1.9 | 49 | 0 | 32 | 24 | 7 | 5 | 105 | 3.8 |
| CAREER | 83 | 3 | 756/9.1 | 59-157 | .376 | 31-102 | .304 | 35-41 | .854 | 21 | 81 | 102 | 1.2 | 90 | 0 | 55 | 50 | 8 | 16 | 184 | 2.2 |



#10 EVA HODGSON

FRESHMAN - GUARD

RINDGE, N.H. - NEW HAMPTON SCHOOL

>> HODGSON'S CAREER HIGHS

MINUTES

Season 50 at Drexel, 3/1/19
Career 50 at Drexel, 3/1/19

POINTS

Season 24 at UNCW, 2/10/19
Career 24 at UNCW, 2/10/19

REBOUNDS

Season 6 (2x) last time vs. Drexel, 2/3/19
Career 6 (2x) last time vs. Drexel, 2/3/19

FIELD GOALS

Season 9 at UNCW, 2/10/19
Career 9 at UNCW, 2/10/19

3-POINT FIELD GOALS

Season 5 at Delaware, 3/3/19
Career 5 at Delaware, 3/3/19

FREE THROWS

Season 8 (2x) last time vs. Drexel, 2/3/19
Career 8 (2x) last time vs. Drexel, 2/3/19

ASSISTS

Season 6 (4x) last time at Drexel, 3/1/19
Career 6 (4x) last time at Drexel, 3/1/19

STEALS

Season 4 at Fairfield, 12/2/18
Career 4 at Fairfield, 12/2/18

BLOCKS

Season 3 vs. Drexel, 2/3/19
Career 3 vs. Drexel, 2/3/19

MISCELLANEOUS

Career in Double Figures 15
2018-19 in Double Figures 15

> 2018-19 GAME-BY-GAME

| Opp | Date | GS | Min | FG-A | 3FG-A | FT-A | Reb. | A | TO | BLK | STL | PTS |
|---------|-------|----|-----|------|-------|------|------|---|----|-----|-----|-----|
| VCU | 11/6 | * | 28 | 4-8 | 0-2 | 0-0 | 0 | 3 | 2 | 0 | 2 | 8 |
| HOW | 11/12 | * | 35 | 2-6 | 1-3 | 1-2 | 5 | 4 | 4 | 0 | 2 | 6 |
| at Loy | 11/17 | * | 30 | 2-7 | 0-1 | 1-1 | 2 | 5 | 2 | 1 | 1 | 5 |
| at DC | 11/24 | * | 30 | 0-4 | 0-1 | 0-0 | 3 | 2 | 4 | 0 | 0 | 0 |
| ECU | 11/27 | * | 26 | 4-4 | 2-2 | 3-4 | 1 | 0 | 2 | 1 | 0 | 13 |
| at Hart | 11/30 | * | 34 | 4-12 | 1-5 | 5-7 | 2 | 2 | 4 | 0 | 3 | 14 |
| at Fair | 12/2 | * | 32 | 0-4 | 0-2 | 3-4 | 5 | 4 | 4 | 0 | 4 | 3 |
| UOFR | 12/5 | * | 32 | 5-11 | 1-4 | 4-4 | 4 | 6 | 3 | 1 | 2 | 15 |
| at ODU | 12/8 | * | 22 | 2-5 | 0-2 | 0-2 | 1 | 3 | 1 | 0 | 0 | 4 |
| at NSU | 12/21 | * | 14 | 2-3 | 1-1 | 0-0 | 1 | 2 | 2 | 0 | 0 | 5 |
| GW | 12/28 | * | 32 | 4-7 | 2-3 | 1-1 | 4 | 6 | 2 | 1 | 0 | 11 |
| at Hof | 1/4 | * | 39 | 6-14 | 1-3 | 5-6 | 1 | 2 | 3 | 1 | 2 | 18 |
| at NU | 1/6 | * | 34 | 4-4 | 3-3 | 5-6 | 4 | 2 | 2 | 0 | 2 | 16 |
| UNCW | 1/11 | * | 27 | 2-6 | 2-5 | 0-0 | 0 | 1 | 2 | 1 | 2 | 6 |
| COFC | 1/13 | * | 17 | 1-4 | 0-1 | 0-0 | 1 | 1 | 5 | 1 | 0 | 2 |
| ELON | 1/20 | * | 37 | 2-7 | 0-2 | 0-0 | 4 | 6 | 2 | 0 | 2 | 4 |
| at JMU | 1/25 | * | 27 | 2-6 | 1-4 | 8-8 | 4 | 1 | 4 | 0 | 1 | 13 |
| at Tow | 1/27 | * | 39 | 4-10 | 0-1 | 5-6 | 6 | 5 | 1 | 1 | 0 | 13 |
| DEL | 2/1 | * | 38 | 3-7 | 1-1 | 4-4 | 1 | 4 | 1 | 0 | 2 | 11 |
| DREXEL | 2/3 | * | 40 | 2-5 | 0-1 | 8-8 | 6 | 4 | 2 | 3 | 3 | 12 |
| at CofC | 2/8 | * | 46 | 5-9 | 2-2 | 1-2 | 2 | 2 | 2 | 0 | 3 | 13 |
| at UNCW | 2/10* | * | 38 | 7-15 | 1-5 | 2-2 | 5 | 2 | 6 | 0 | 0 | 24 |
| at Elon | 2/17 | * | 37 | 5-9 | 2-6 | 2-2 | 3 | 1 | 3 | 0 | 2 | 14 |
| TOW | 2/22 | * | 36 | 2-7 | 2-6 | 0-0 | 5 | 3 | 3 | 0 | 1 | 6 |
| JMU | 2/24 | * | 37 | 0-5 | 0-3 | 0-0 | 2 | 5 | 0 | 0 | 3 | 0 |
| at DU | 3/1 | * | 50 | 6-9 | 1-3 | 3-4 | 4 | 6 | 4 | 0 | 1 | 16 |
| at Del | 3/3 | * | 37 | 6-10 | 5-7 | 0-0 | 4 | 2 | 3 | 1 | 2 | 17 |
| NU | 3/7 | * | 38 | 3-7 | 2-5 | 0-0 | 3 | 4 | 1 | 0 | 2 | 8 |

>> HODGSON'S CAREER STATISTICS

| Season | GP | GS | Min/Avg | FG-FGA | Pct | 3pt-Att | Pct | FT-FTA | Pct | Off | Def | Reb | Avg | PF | FO | A | TO | Blk | S | TP | Avg |
|---------|----|----|----------|--------|------|---------|------|--------|------|-----|-----|-----|-----|----|----|----|----|-----|----|-----|-----|
| 2018-19 | 28 | 28 | 930/33.2 | 91-205 | .444 | 34-85 | .400 | 61-74 | .824 | 28 | 54 | 82 | 2.9 | 73 | 2 | 88 | 73 | 12 | 41 | 277 | 9.9 |
| CAREER | 28 | 28 | 930/33.2 | 91-205 | .444 | 34-85 | .400 | 61-74 | .824 | 28 | 54 | 82 | 2.9 | 73 | 2 | 88 | 73 | 12 | 41 | 277 | 9.9 |



#11 NYLA POLLARD

SOPHOMORE - GUARD

VIRGINIA BEACH, VA. - PRINCESS ANNE

>> POLLARD'S CAREER HIGHS

MINUTES

Season 38 at Hofstra, 1/4/19
Career 38 at Hofstra, 1/4/19

POINTS

Season 10 vs. East Carolina, 11/27/18
Career 14 vs. USC Upstate, 12/5/17

REBOUNDS

Season 12 vs. East Carolina, 11/27/18
Career 12 vs. East Carolina, 11/27/18

FIELD GOALS

Season 4 (2x) last time vs. CofC, 1/19/13
Career 6 vs. USC Upstate, 12/5/17

3-POINT FIELD GOALS

Season 3 vs. James Madison, 2/24/19
Career 3 vs. James Madison, 2/24/19

FREE THROWS

Season 6 vs. East Carolina, 11/27/18
Career 6 vs. East Carolina, 11/27/18

ASSISTS

Season 6 vs. UNCW, 1/11/19
Career 6 vs. UNCW, 1/11/19

STEALS

Season 3 (2x) last time vs. CofC, 2/8/19
Career 4 vs. Davidson, 11/27/17

BLOCKS

Season 1 (3x) last time vs. Elon, 1/20/19
Career 1 (7x) last time vs. Elon, 1/20/19

MISCELLANEOUS

Career in Double Figures 4
2018-19 in Double Figures 1

>> 2018-19 GAME-BY-GAME

| Opp | Date | GS | Min | FG-A | 3FG-A | FT-A | Reb. | A | TO | BLK | STL | PTS |
|---------|-------|----|-----|------|-------|------|------|---|----|-----|-----|-----|
| VCU | 11/6 | | 19 | 2-4 | 1-1 | 0-1 | 1 | 0 | 0 | 0 | 1 | 5 |
| HOW | 11/12 | | 34 | 3-7 | 2-3 | 0-0 | 3 | 2 | 2 | 0 | 2 | 8 |
| at Loy | 11/17 | | 23 | 4-6 | 1-2 | 0-0 | 2 | 4 | 1 | 0 | 1 | 9 |
| at DC | 11/24 | | 25 | 1-4 | 0-2 | 0-1 | 1 | 1 | 2 | 0 | 0 | 2 |
| ECU | 11/27 | * | 35 | 2-9 | 0-3 | 6-8 | 12 | 2 | 4 | 1 | 0 | 10 |
| at Hart | 11/30 | * | 25 | 0-6 | 0-3 | 0-0 | 3 | 2 | 2 | 0 | 0 | 0 |
| at Fair | 12/2 | * | 27 | 0-3 | 0-0 | 2-4 | 3 | 3 | 3 | 0 | 2 | 2 |
| UOFR | 12/5 | * | 35 | 2-5 | 1-4 | 0-0 | 2 | 2 | 3 | 0 | 3 | 5 |
| at ODU | 12/8 | * | 20 | 0-2 | 0-1 | 2-2 | 0 | 4 | 2 | 0 | 2 | 2 |
| at NSU | 12/21 | * | 37 | 2-6 | 0-2 | 2-2 | 2 | 4 | 0 | 0 | 1 | 6 |
| GW | 12/28 | * | 33 | 1-7 | 0-2 | 0-0 | 1 | 3 | 2 | 0 | 1 | 2 |
| at Hof | 1/4 | * | 38 | 1-4 | 1-1 | 1-2 | 7 | 3 | 1 | 0 | 2 | 4 |
| at NU | 1/6 | * | 13 | 0-2 | 0-1 | 0-0 | 0 | 0 | 0 | 0 | 0 | 0 |
| UNCW | 1/11 | * | 36 | 2-4 | 2-3 | 3-4 | 7 | 6 | 3 | 0 | 0 | 9 |
| COFC | 1/13 | * | 37 | 4-9 | 0-3 | 1-2 | 2 | 4 | 0 | 1 | 1 | 9 |
| ELON | 1/20 | * | 33 | 1-6 | 0-0 | 0-0 | 1 | 2 | 3 | 1 | 0 | 2 |
| at JMU | 1/25 | * | 25 | 0-3 | 0-1 | 2-2 | 1 | 1 | 2 | 0 | 0 | 2 |
| at Tow | 1/27 | * | 34 | 2-3 | 1-1 | 3-4 | 2 | 4 | 2 | 0 | 1 | 8 |
| DEL | 2/1 | * | 22 | 1-6 | 1-2 | 0-0 | 1 | 4 | 1 | 0 | 2 | 3 |
| DREXEL | 2/3 | * | 21 | 2-6 | 0-2 | 1-2 | 4 | 1 | 2 | 0 | 0 | 5 |
| at CofC | 2/8 | * | 31 | 0-3 | 0-3 | 0-0 | 4 | 3 | 4 | 0 | 3 | 0 |
| at UNCW | 2/10* | | 16 | 0-3 | 0-1 | 0-0 | 2 | 2 | 1 | 0 | 0 | 0 |
| at Elon | 2/17 | * | 28 | 1-6 | 1-4 | 1-2 | 3 | 1 | 2 | 0 | 1 | 4 |
| TOW | 2/22 | * | 28 | 2-2 | 0-0 | 2-2 | 4 | 4 | 0 | 0 | 2 | 6 |
| JMU | 2/24 | * | 24 | 3-4 | 3-4 | 0-0 | 2 | 1 | 4 | 0 | 1 | 9 |
| at DU | 3/1 | * | 25 | 1-3 | 1-2 | 1-6 | 4 | 0 | 0 | 0 | 0 | 4 |
| at Del | 3/3 | * | 27 | 0-3 | 0-1 | 0-0 | 2 | 2 | 3 | 0 | 0 | 0 |
| NU | 3/7 | * | 30 | 2-3 | 2-3 | 0-0 | 1 | 1 | 1 | 0 | 1 | 6 |

>> POLLARD'S CAREER STATISTICS

| Season | GP | GS | Min/Avg | FG-FGA | Pct | 3pt-Att | Pct | FT-FTA | Pct | Off | Def | Reb | Avg | PF | FO | A | TO | Blk | S | TP | Avg |
|---------|----|----|-----------|--------|------|---------|------|--------|------|-----|-----|-----|-----|-----|----|-----|----|-----|----|-----|-----|
| 2017-18 | 30 | 27 | 658/21.9 | 44-121 | .364 | 14-48 | .292 | 20-27 | .741 | 22 | 31 | 53 | 1.8 | 71 | 3 | 46 | 40 | 4 | 15 | 122 | 4.1 |
| 2018-19 | 28 | 23 | 781/27.9 | 39-129 | .302 | 17-58 | .292 | 27-44 | .614 | 26 | 51 | 77 | 2.8 | 61 | 3 | 67 | 50 | 3 | 27 | 122 | 4.4 |
| CAREER | 58 | 51 | 1439/24.8 | 83-250 | .332 | 31-106 | .292 | 47-71 | .662 | 48 | 82 | 130 | 2.2 | 132 | 6 | 113 | 90 | 7 | 42 | 244 | 4.2 |



#12 HARPER BIRDSONG

SOPHOMORE - GUARD

SUFFOLK, VA. - NANSEMOND SUFFOLK
(George Washington)

>> BIRDSONG'S CAREER HIGHS

MINUTES

| | | |
|--------|----|--------------------------|
| Season | 30 | at Old Dominion, 12/8/18 |
| Career | 30 | at Old Dominion, 12/8/18 |

POINTS

| | | |
|--------|----|--------------------------|
| Season | 18 | at Old Dominion, 12/8/18 |
| Career | 18 | at Old Dominion, 12/8/18 |

REBOUNDS

| | | |
|--------|---|----------------------------------|
| Season | 5 | (3x) last time vs. CofC, 1/13/19 |
| Career | 5 | (3x) last time vs. CofC, 1/13/19 |

FIELD GOALS

| | | |
|--------|---|------------------------------|
| Season | 6 | (3x) last time at NU, 1/6/19 |
| Career | 6 | (3x) last time at NU, 1/6/19 |

3-POINT FIELD GOALS

| | | |
|--------|---|------------------|
| Season | 4 | vs. GW, 12/28/18 |
| Career | 4 | vs. GW, 12/28/18 |

FREE THROWS

| | | |
|--------|---|-----------------------------|
| Season | 4 | (2x) last vs. UNCW, 1/11/19 |
| Career | 4 | (2x) last vs. UNCW, 1/11/19 |

ASSISTS

| | | |
|--------|---|---------------------------------|
| Season | 4 | (2x) last time at UNCW, 2/10/19 |
| Career | 4 | (2x) last time at UNCW, 2/10/19 |

STEALS

| | | |
|--------|---|------------------|
| Season | 3 | vs. GW, 12/28/18 |
| Career | 3 | vs. GW, 12/28/18 |

BLOCKS

| | | |
|--------|---|-------------------|
| Season | 2 | vs. UNCW, 1/11/19 |
| Career | 2 | vs. UNCW, 1/11/19 |

MISCELLANEOUS

| | |
|---------------------------|----|
| Career in Double Figures | 15 |
| 2018-19 in Double Figures | 15 |

>> 2018-19 GAME-BY-GAME

| Opp | Date | GS | Min | FG-A | 3FG-A | FT-A | Reb. | A | TO | BLK | STLPTS |
|---------|-------|----|-----|------|-------|------|------|---|----|-----|--------|
| VCU | 11/6 | * | 12 | 0-4 | 0-2 | 0-0 | 0 | 0 | 4 | 0 | 0 |
| HOW | 11/12 | * | 16 | 5-10 | 1-4 | 1-2 | 2 | 1 | 1 | 1 | 12 |
| at Loy | 11/17 | * | 14 | 3-3 | 3-3 | 0-2 | 0 | 0 | 2 | 0 | 9 |
| at DC | 11/24 | * | 20 | 4-10 | 2-6 | 0-0 | 0 | 2 | 1 | 0 | 10 |
| ECU | 11/27 | | 19 | 3-9 | 1-3 | 3-3 | 1 | 1 | 3 | 1 | 10 |
| at Hart | 11/30 | | 19 | 2-5 | 2-5 | 2-5 | 1 | 1 | 2 | 0 | 8 |
| at Fair | 12/2 | | 25 | 3-8 | 3-5 | 2-2 | 0 | 0 | 1 | 0 | 11 |
| UOFR | 12/5 | | 18 | 5-7 | 3-5 | 0-0 | 2 | 2 | 1 | 0 | 13 |
| at ODU | 12/8 | | 30 | 6-18 | 2-8 | 4-4 | 2 | 4 | 3 | 0 | 18 |
| at NSU | 12/21 | | 28 | 5-11 | 3-7 | 1-1 | 5 | 1 | 4 | 0 | 14 |
| GW | 12/28 | | 23 | 6-10 | 4-6 | 0-0 | 2 | 2 | 1 | 0 | 3 |
| at Hof | 1/4 | | 23 | 2-7 | 2-5 | 3-4 | 1 | 0 | 22 | 0 | 9 |
| at NU | 1/6 | | 29 | 6-15 | 2-7 | 2-4 | 5 | 2 | 1 | 0 | 16 |
| UNCW | 1/11 | | 21 | 0-10 | 0-5 | 4-4 | 2 | 1 | 0 | 2 | 4 |
| COFC | 1/13 | | 23 | 3-11 | 2-5 | 0-0 | 4 | 0 | 2 | 0 | 8 |
| ELON | 1/20 | | 17 | 5-11 | 3-6 | 0-0 | 3 | 2 | 3 | 1 | 0 |
| at JMU | 1/25 | | 14 | 5-9 | 2-5 | 0-0 | 0 | 0 | 1 | 0 | 12 |
| at Tow | 1/27 | | 3 | 0-1 | 0-1 | 0-0 | 0 | 0 | 1 | 0 | 0 |
| DEL | 2/1 | | 23 | 5-11 | 0-4 | 2-2 | 1 | 1 | 1 | 0 | 12 |
| DREXEL | 2/3 | | 27 | 5-8 | 3-6 | 2-2 | 3 | 0 | 1 | 1 | 15 |
| at CofC | 2/8 | | 24 | 3-9 | 2-4 | 0-0 | 3 | 0 | 1 | 0 | 8 |
| at UNCW | 2/10 | | 29 | 0-10 | 0-4 | 0-0 | 4 | 4 | 2 | 0 | 0 |
| at Elon | 2/17 | | 17 | 4-7 | 3-4 | 2-2 | 1 | 2 | 0 | 0 | 13 |
| TOW | 2/22 | | 14 | 2-7 | 1-5 | 2-3 | 1 | 0 | 1 | 0 | 7 |
| JMU | 2/24 | | 17 | 3-8 | 3-5 | 2-4 | 2 | 1 | 2 | 0 | 11 |
| at DU | 3/1 | | 23 | 1-4 | 0-1 | 0-0 | 2 | 1 | 0 | 0 | 2 |
| at Del | 3/3 | | 10 | 0-2 | 0-0 | 0-0 | 1 | 0 | 3 | 0 | 0 |
| NU | 3/7 | | 14 | 4-7 | 3-5 | 0-0 | 2 | 0 | 5 | 0 | 11 |

>> BIRDSONG'S CAREER STATISTICS

| Season | GP | GS | Min/Avg | FG-FGA | Pct | 3pt-Att | Pct | FT-FTA | Pct | Off | Def | Reb | Avg | PF | FO | A | TO | Blk | S | TP | Avg |
|---------|----|----|----------|--------|------|---------|------|--------|-------|-----|-----|-----|-----|----|----|----|----|-----|----|-----|-----|
| 2016-17 | 8 | 0 | 39/4.9 | 4-13 | .308 | 2-8 | .250 | 1-1 | 1.000 | 0 | 2 | 2 | 0.3 | 2 | 0 | 2 | 1 | 0 | 1 | 11 | 1.4 |
| 2017-18 | | | | | | | | | | | | | | | | | | | | | |
| 2018-19 | 28 | 4 | 557/19.8 | 90-233 | .386 | 50-128 | .391 | 32-44 | .727 | 15 | 36 | 51 | 1.8 | 49 | 1 | 28 | 50 | 6 | 18 | 262 | 9.4 |
| CAREER | 36 | 4 | 595/16.5 | 94-246 | .382 | 52-136 | .382 | 33-45 | .733 | 15 | 38 | 53 | 1.5 | 51 | 1 | 39 | 51 | 6 | 19 | 273 | 7.6 |

>> 2018-19 GAME-BY-GAME

| Opp | Date | GS | Min | FG-A | 3FG-A | FT-A | Reb. | A | TO | BLK | STLPTS |
|---------|-------|----|-----|------|-------|------|------|---|----|-----|--------|
| VCU | 11/6 | | 16 | 1-5 | 1-4 | 1-2 | 4 | 1 | 0 | 1 | 0 |
| HOW | 11/12 | | 13 | 5-9 | 4-7 | 0-2 | 2 | 0 | 0 | 2 | 0 |
| at Loy | 11/17 | | 18 | 2-2 | 1-1 | 0-0 | 5 | 3 | 1 | 0 | 2 |
| at DC | 11/24 | | 16 | 3-5 | 3-4 | 0-0 | 3 | 0 | 0 | 0 | 9 |
| ECU | 11/27 | | 15 | 2-6 | 2-4 | 0-0 | 4 | 2 | 0 | 0 | 6 |
| at Hart | 11/30 | | 22 | 0-6 | 0-4 | 2-2 | 1 | 0 | 1 | 1 | 2 |
| at Fair | 12/2 | | 11 | 0-3 | 0-2 | 2-2 | 4 | 0 | 1 | 0 | 2 |
| UOFR | 12/5 | | 8 | 1-2 | 1-2 | 0-0 | 1 | 0 | 1 | 0 | 3 |
| at ODU | 12/8 | | 21 | 1-5 | 0-3 | 0-0 | 5 | 1 | 0 | 1 | 2 |
| at NSU | 12/21 | | 21 | 3-7 | 1-5 | 0-2 | 1 | 2 | 0 | 0 | 7 |
| GW | 12/28 | | 14 | 1-5 | 1-4 | 0-0 | 2 | 0 | 0 | 2 | 0 |
| at Hof | 1/4 | | 13 | 0-0 | 0-0 | 0-0 | 1 | 1 | 0 | 0 | 0 |
| at NU | 1/6 | | 18 | 1-5 | 0-4 | 1-1 | 1 | 1 | 2 | 0 | 3 |
| UNCW | 1/11 | * | 12 | 0-4 | 0-4 | 0-0 | 0 | 0 | 0 | 0 | 0 |
| COFC | 1/13 | * | 7 | 0-1 | 0-0 | 0-0 | 0 | 0 | 0 | 1 | 0 |
| ELON | 1/20 | | 10 | 3-6 | 3-5 | 0-0 | 0 | 0 | 0 | 1 | 0 |
| at JMU | 1/25 | | 13 | 0-2 | 0-2 | 0-0 | 3 | 0 | 0 | 0 | 1 |
| at Tow | 1/27 | | 22 | 5-8 | 3-5 | 0-0 | 4 | 0 | 1 | 0 | 13 |
| DEL | 2/1 | | 9 | 1-2 | 1-2 | 0-0 | 2 | 0 | 1 | 1 | 0 |
| DREXEL | 2/3 | | 15 | 1-6 | 1-6 | 0-0 | 3 | 0 | 1 | 2 | 0 |
| at CofC | 2/8 | * | 6 | 0-0 | 0-0 | 0-0 | 0 | 0 | 2 | 0 | 0 |
| at UNCW | 2/10 | | 14 | 2-5 | 2-5 | 0-0 | 3 | 0 | 0 | 0 | 6 |
| at Elon | 2/17 | | 19 | 2-4 | 2-4 | 0-0 | 1 | 1 | 1 | 0 | 6 |
| TOW | 2/22 | | 11 | 2-5 | 1-3 | 1-1 | 1 | 0 | 0 | 0 | 6 |
| JMU | 2/24 | | 9 | 1-1 | 0-0 | 0-0 | 2 | 1 | 4 | 0 | 1 |
| at DU | 3/1 | | 15 | 1-2 | 0-1 | 0-0 | 2 | 0 | 0 | 0 | 3 |
| at Del | 3/3 | | 13 | 1-2 | 1-2 | 0-0 | 2 | 0 | 1 | 0 | 3 |
| NU | 3/7 | | 9 | 0-1 | 0-0 | 0-0 | 1 | 2 | 2 | 0 | 0 |



#15 EMMA KRAUSE

FRESHMAN - FORWARD

PLANTATION, FLA. - CARDINAL GIBBONS

>> KRAUSE'S CAREER HIGHS

MINUTES

| | | |
|--------|----|-------------------------------|
| Season | 22 | (2x) last time at TU, 1/27/19 |
| Career | 22 | (2x) last time at TU, 1/27/19 |

POINTS

| | | |
|--------|----|----------------------|
| Season | 14 | vs. Howard, 11/12/18 |
| Career | 14 | vs. Howard, 11/12/18 |

REBOUNDS

| | | |
|--------|---|--------------------------------|
| Season | 5 | (2x) last time at ODU, 12/8/18 |
| Career | 5 | (2x) last time at ODU, 12/8/18 |

FIELD GOALS

| | | |
|--------|---|-------------------------------|
| Season | 5 | (2x) last time at TU, 1/27/19 |
| Career | 5 | (2x) last time at TU, 1/27/19 |

3-POINT FIELD GOALS

| | | |
|--------|---|----------------------|
| Season | 4 | vs. Howard, 11/12/18 |
| Career | 4 | vs. Howard, 11/12/18 |

FREE THROWS

| | | |
|--------|---|-----------------------|
| Season | 2 | at Fairfield, 12/2/18 |
| Career | 2 | at Fairfield, 12/2/18 |

ASSISTS

| | | |
|--------|---|---------------------|
| Season | 3 | at Loyola, 11/14/18 |
| Career | 3 | at Loyola, 11/14/18 |

STEALS

| | | |
|--------|---|---------------------|
| Season | 2 | at Loyola, 11/14/18 |
| Career | 2 | at Loyola, 11/14/18 |

BLOCKS

| | | |
|--------|---|-----------------------------------|
| Season | 2 | (3x) last time vs. Drexel, 2/3/19 |
| Career | 2 | (3x) last time vs. Drexel, 2/3/19 |

MISCELLANEOUS

| | |
|---------------------------|---|
| Career in Double Figures | 2 |
| 2018-19 in Double Figures | 2 |

>> KRAUSE'S CAREER STATISTICS

| Season | GP | GS | Min/Avg | FG-FGA | Pct | 3pt-Att | Pct | FT-FTA | Pct | Off | Def | Reb | Avg | PF | FO | A | TO | Blk | S | TP | Avg |
|---------|----|----|----------|--------|------|---------|------|--------|------|-----|-----|-----|-----|----|----|----|----|-----|---|-----|-----|
| 2018-19 | 28 | 3 | 391/14.0 | 39-109 | .358 | 28-83 | .337 | 8-14 | .571 | 13 | 42 | 55 | 2.0 | 46 | 1 | 16 | 15 | 12 | 6 | 114 | 4.1 |
| CAREER | 28 | 3 | 391/14.0 | 39-109 | .358 | 28-83 | .337 | 8-14 | .571 | 13 | 42 | 55 | 2.0 | 46 | 1 | 16 | 15 | 12 | 6 | 114 | 4.1 |



#20 CHANDLER SMITH

SENIOR - CENTER

PORT TOBACCO, MD. - ST. MARY'S RYKEN

>> SMITH'S CAREER HIGHS

MINUTES

| | | |
|--------|----|------------------|
| Season | 20 | at UNCW, 2/10/19 |
| Career | 20 | at UNCW, 2/10/19 |

POINTS

| | | |
|--------|---|-------------------------------|
| Season | 2 | at UNCW, 2/10/19 |
| Career | 4 | (4x) last time at SFU 12/2/17 |

REBOUNDS

| | | |
|--------|---|------------------|
| Season | 6 | at UNCW, 2/10/19 |
| Career | 6 | at UNCW, 2/10/19 |

FIELD GOALS

| | | |
|--------|---|--------------------------------|
| Season | 1 | at UNCW, 2/10/19 |
| Career | 2 | (3x) last time at SFU, 12/2/17 |

3-POINT FIELD GOALS

| | | |
|--------|---|--|
| Season | - | |
| Career | - | |

FREE THROWS

| | | |
|--------|---|----------------------|
| Season | 1 | vs. Howard, 11/12/18 |
| Career | 4 | vs. Hofstra, 2/7/17 |

ASSISTS

| | | |
|--------|---|----------------------------------|
| Season | 1 | vs. Richmond, 12/5/18 |
| Career | 1 | (3x) last time vs. UofR, 12/5/18 |

STEALS

| | | |
|--------|---|---|
| Season | 1 | at Elon, 2/19/19 |
| Career | 2 | (2x) last time vs. Mount St. Mary's, 12/18/16 |

BLOCKS

| | | |
|--------|---|--------------------------------|
| Season | 1 | (3x) last time at JMU 1/25/19 |
| Career | 3 | vs. Mount St. Mary's, 12/18/16 |

MISCELLANEOUS

| | |
|---------------------------|---|
| Career in Double Figures | 0 |
| 2017-18 in Double Figures | 0 |

>> SMITH'S CAREER STATISTICS

| Season | GP | GS | Min/Avg | FG-FGA | Pct | 3pt-Att | Pct | FT-FTA | Pct | Off | Def | Reb | Avg | PF | FO | A | TO | Blk | S | TP | Avg |
|---------------|-----------|----------|----------------|--------------|-------------|------------|-------------|-------------|-------------|-----------|-----------|-----------|------------|-----------|----------|----------|-----------|-----------|----------|-----------|------------|
| 2015-16 | 19 | 0 | 97/5.1 | 3-12 | .250 | 0-0 | .000 | 0-6 | .000 | 2 | 10 | 12 | 0.6 | 13 | 0 | 0 | 5 | 4 | 3 | 6 | 0.3 |
| 2016-17 | 13 | 0 | 77/5.9 | 6-21 | .286 | 0-0 | .000 | 7-8 | .875 | 2 | 22 | 24 | 1.8 | 16 | 1 | 1 | 7 | 11 | 3 | 19 | 1.5 |
| 2017-18 | 21 | 0 | 86/4.1 | 5-17 | .294 | 0-0 | .000 | 0-0 | .000 | 4 | 8 | 12 | 0.6 | 15 | 0 | 3 | 8 | 9 | 1 | 10 | 0.5 |
| 2018-19 | 12 | 1 | 61/5.1 | 1-3 | .333 | 0-0 | .000 | 1-4 | .250 | 3 | 12 | 15 | 1.3 | 8 | 0 | 1 | 7 | 4 | 1 | 3 | 0.3 |
| CAREER | 65 | 1 | 321/4.9 | 15-53 | .283 | 0-0 | .000 | 8-18 | .444 | 11 | 52 | 63 | 1.0 | 52 | 1 | 5 | 27 | 28 | 8 | 38 | 0.6 |



#21 BAILEY EICHNER

SOPHOMORE - GUARD/FORWARD

CUDAHY, WISC. - CUSAHY

>> EICHNER'S CAREER HIGHS

MINUTES

| | | |
|--------|----|---------------------|
| Season | 16 | at Delaware, 3/3/19 |
| Career | 16 | at Delaware, 3/3/19 |

POINTS

| | | |
|--------|---|----------------------------|
| Season | 5 | vs. James Madison, 2/24/19 |
| Career | 5 | vs. James Madison, 2/24/19 |

REBOUNDS

| | | |
|--------|---|--------------------------|
| Season | 6 | at Old Dominion, 12/8/18 |
| Career | 6 | at Old Dominion, 12/8/18 |

FIELD GOALS

| | | |
|--------|---|----------------------------|
| Season | 2 | vs. James Madison, 2/24/19 |
| Career | 2 | vs. James Madison, 2/24/19 |

3-POINT FIELD GOALS

| | | |
|--------|---|----------------------------|
| Season | 1 | vs. James Madison, 2/24/19 |
| Career | 1 | vs. James Madison, 2/24/19 |

FREE THROWS

| | | |
|--------|---|---------------------------|
| Season | 1 | vs. VCU, 11/6/18 |
| Career | 2 | vs. James Madison, 2/2/18 |

ASSISTS

| | | |
|--------|---|---------------------------------|
| Season | 2 | vs. James Madison, 2/24/19 |
| Career | 2 | (2x) last time vs. JMU, 2/24/19 |

STEALS

| | | |
|--------|---|--------------------------|
| Season | 2 | at Old Dominion, 12/8/18 |
| Career | 2 | at Old Dominion, 12/8/18 |

BLOCKS

| | | |
|--------|---|-------------------------------|
| Season | 1 | vs. NU, 3/7/19 |
| Career | 1 | (3x) last time vs. NU, 3/7/19 |

MISCELLANEOUS

| | |
|---------------------------|---|
| Career in Double Figures | 0 |
| 2017-18 in Double Figures | 0 |

>> EICHNER'S CAREER STATISTICS

| Season | GP | GS | Min/Avg | FG-FGA | Pct | 3pt-Att | Pct | FT-FTA | Pct | Off | Def | Reb | Avg | PF | FO | A | TO | Blk | S | TP | Avg |
|---------------|-----------|----------|----------------|-------------|-------------|------------|-------------|-------------|-------------|-----------|-----------|-----------|------------|-----------|----------|-----------|-----------|----------|----------|-----------|------------|
| 2017-18 | 16 | 0 | 46/2.9 | 2-6 | .333 | 0-2 | .000 | 4-8 | .500 | 6 | 9 | 15 | 0.9 | 14 | 0 | 2 | 7 | 2 | 1 | 8 | 0.5 |
| 2018-19 | 18 | 0 | 126/7.0 | 5-16 | .313 | 1-5 | .200 | 1-4 | .250 | 7 | 18 | 25 | 1.4 | 16 | 0 | 8 | 5 | 2 | 3 | 12 | 0.7 |
| CAREER | 34 | 0 | 172/5.1 | 7-22 | .318 | 1-7 | .143 | 5-12 | .417 | 13 | 27 | 40 | 1.2 | 30 | 0 | 10 | 12 | 4 | 4 | 20 | 0.6 |

>> 2018-19 GAME-BY-GAME

| Opp | Date | GS | Min | FG-A | 3FG-A | FT-A | Reb. | A | TO | BLK | STLPTS |
|---------|-------|----|-----|------|------------------|------|------|---|----|-----|--------|
| VCU | 11/6 | 8 | 0-0 | 0-0 | 0-0 | 2 | 0 | 0 | 0 | 0 | 0 |
| HOW | 11/12 | 4 | 0-0 | 0-0 | 1-2 | 2 | 0 | 1 | 1 | 0 | 1 |
| at Loy | 11/17 | 4 | 0-1 | 0-0 | 0-0 | 0 | 0 | 0 | 1 | 0 | 0 |
| at DC | 11/24 | | DNP | - | COACH'S DECISION | | | | | | |
| ECU | 11/27 | 8 | 0-0 | 0-0 | 0-0 | 3 | 0 | 2 | 0 | 0 | 0 |
| at Hart | 11/30 | | DNP | - | COACH'S DECISION | | | | | | |
| at Fair | 12/2 | | DNP | - | COACH'S DECISION | | | | | | |
| UOFR | 12/5 | 5 | 0-0 | 0-0 | 0-0 | 1 | 1 | 0 | 0 | 0 | 0 |
| at ODU | 12/8 | | DNP | - | COACH'S DECISION | | | | | | |
| at NSU | 12/21 | 2 | 0-0 | 0-0 | 0-0 | 0 | 0 | 0 | 0 | 0 | 0 |
| GW | 12/28 | 1 | 0-0 | 0-0 | 0-0 | 0 | 0 | 1 | 0 | 0 | 0 |
| at Hof | 1/4 | | DNP | - | COACH'S DECISION | | | | | | |
| at NU | 1/6 | | DNP | - | COACH'S DECISION | | | | | | |
| UNCW | 1/11 | | DNP | - | COACH'S DECISION | | | | | | |
| COFC | 1/13 | | DNP | - | COACH'S DECISION | | | | | | |
| ELON | 1/20 | | DNP | - | COACH'S DECISION | | | | | | |
| at JMU | 1/25 | 2 | 0-0 | 0-0 | 0-0 | 0 | 0 | 0 | 1 | 0 | 0 |
| at Tow | 1/27 | 1 | 0-0 | 0-0 | 0-0 | 0 | 0 | 1 | 0 | 0 | 0 |
| DEL | 2/1 | | DNP | - | COACH'S DECISION | | | | | | |
| DREXEL | 2/3 | | DNP | - | COACH'S DECISION | | | | | | |
| at CofC | 2/8 | 1 | 0-0 | 0-0 | 0-0 | 1 | 0 | 1 | 0 | 0 | 0 |
| at UNCW | 2/10* | 20 | 1-2 | 0-0 | 0-2 | 6 | 0 | 0 | 0 | 0 | 2 |
| at Elon | 2/17 | 6 | 0-0 | 0-0 | 0-0 | 0 | 0 | 1 | 0 | 1 | 0 |
| TOW | 2/22 | | DNP | - | COACH'S DECISION | | | | | | |
| JMU | 2/24 | | DNP | - | COACH'S DECISION | | | | | | |
| at DU | 3/1 | | DNP | - | COACH'S DECISION | | | | | | |
| at Del | 3/3 | | DNP | - | COACH'S DECISION | | | | | | |
| NU | 3/7 | | DNP | - | COACH'S DECISION | | | | | | |

>> 2018-19 GAME-BY-GAME

| Opp | Date | GS | Min | FG-A | 3FG-A | FT-A | Reb. | A | TO | BLK | STLPTS |
|---------|-------|----|-----|------|------------------|------|------|---|----|-----|--------|
| VCU | 11/6 | 11 | 0-2 | 0-1 | 1-2 | 1 | 0 | 1 | 0 | 0 | 1 |
| HOW | 11/12 | 1 | 0-0 | 0-0 | 0-0 | 0 | 0 | 1 | 0 | 0 | 0 |
| at Loy | 11/17 | 1 | 0-0 | 0-0 | 0-0 | 0 | 0 | 0 | 0 | 0 | 0 |
| at DC | 11/24 | | DNP | - | COACH'S DECISION | | | | | | |
| ECU | 11/26 | | DNP | - | COACH'S DECISION | | | | | | |
| at Hart | 11/30 | | DNP | - | COACH'S DECISION | | | | | | |
| at Fair | 12/2 | | DNP | - | COACH'S DECISION | | | | | | |
| UOFR | 12/5 | | DNP | - | COACH'S DECISION | | | | | | |
| at ODU | 12/8 | 11 | 1-2 | 0-0 | 0-0 | 6 | 0 | 0 | 0 | 0 | 2 |
| at NSU | 12/21 | 7 | 0-2 | 0-1 | 0-0 | 2 | 0 | 0 | 0 | 1 | 0 |
| GW | 12/28 | 13 | 0-1 | 0-1 | 0-0 | 2 | 1 | 0 | 1 | 0 | 0 |
| at Hof | 1/4 | 8 | 0-0 | 0-0 | 0-0 | 1 | 1 | 0 | 0 | 0 | 0 |
| at NU | 1/6 | 6 | 0-1 | 0-0 | 0-0 | 1 | 0 | 0 | 0 | 0 | 0 |
| UNCW | 1/11 | 3 | 0-0 | 0-0 | 0-0 | 0 | 0 | 0 | 0 | 0 | 0 |
| COFC | 1/13 | | DNP | - | COACH'S DECISION | | | | | | |
| ELON | 1/20 | 1 | 0-0 | 0-0 | 0-0 | 0 | 0 | 1 | 0 | 0 | 0 |
| at JMU | 1/25 | 9 | 0-1 | 0-0 | 0-0 | 2 | 0 | 0 | 0 | 0 | 0 |
| at Tow | 1/27 | 2 | 0-0 | 0-0 | 0-0 | 0 | 0 | 0 | 1 | 0 | 0 |
| DEL | 2/1 | | DNP | - | COACH'S DECISION | | | | | | |
| DREXEL | 2/3 | | DNP | - | COACH'S DECISION | | | | | | |
| at CofC | 2/8 | | DNP | - | INJURY | | | | | | |
| at UNCW | 2/10 | | DNP | - | INJURY | | | | | | |
| at Elon | 2/17 | 3 | 0-0 | 0-0 | 0-0 | 0 | 0 | 1 | 0 | 0 | 0 |
| TOW | 2/22 | 3 | 0-0 | 0-0 | 0-0 | 0 | 1 | 0 | 0 | 0 | 0 |
| JMU | 2/24 | 15 | 2-3 | 1-1 | 0-0 | 2 | 2 | 0 | 0 | 0 | 5 |
| at DU | 3/1 | 10 | 0-2 | 0-1 | 0-0 | 2 | 1 | 0 | 0 | 0 | 0 |
| at Del | 3/3 | 16 | 1-1 | 0-0 | 0-2 | 4 | 1 | 0 | 0 | 0 | 2 |
| NU | 3/7 | 7 | 1-1 | 0-0 | 0-0 | 2 | 1 | 0 | 1 | 0 | 2 |



#25 GABBY ROGERS

SOPHOMORE - CENTER

DALLAS, TEXAS - BISHOP LYNCH

>> ROGERS' CAREER HIGHS

MINUTES

| | | |
|--------|----|-------------------|
| Season | 33 | at Drexel, 3/1/19 |
| Career | 33 | at Drexel, 3/1/19 |

POINTS

| | | |
|--------|----|---------------------|
| Season | 17 | vs. Towson, 2/22/19 |
| Career | 17 | vs. Towson, 2/22/19 |

REBOUNDS

| | | |
|--------|----|-----------------------|
| Season | 12 | at Charleston, 2/8/19 |
| Career | 12 | at Charleston, 2/8/19 |

FIELD GOALS

| | | |
|--------|---|---------------------|
| Season | 8 | vs. Towson, 2/22/19 |
| Career | 8 | vs. Towson, 2/22/19 |

3-POINT FIELD GOALS

| | | |
|--------|---|--|
| Season | - | |
| Career | - | |

FREE THROWS

| | | |
|--------|---|-----------------------|
| Season | 6 | at Charleston, 2/8/19 |
| Career | 6 | at Charleston, 2/8/19 |

ASSISTS

| | | |
|--------|---|--------------------------|
| Season | 2 | vs. Northeastern, 3/7/19 |
| Career | 2 | vs. Northeastern, 3/7/19 |

STEALS

| | | |
|--------|---|-----------------------------------|
| Season | 3 | (2x) last time at Hofstra, 1/4/19 |
| Career | 3 | (3x) last time at Hofstra, 1/4/19 |

BLOCKS

| | | |
|--------|---|----------------------------------|
| Season | 2 | vs. Elon, 1/20/19 |
| Career | 2 | (3x) last time vs. Elon, 1/20/19 |

MISCELLANEOUS

| | |
|---------------------------|---|
| Career in Double Figures | 4 |
| 2018-19 in Double Figures | 4 |

>> 2018-19 GAME-BY-GAME

| Opp | Date | GS | Min | FG-A | 3FG-A | FT-A | Reb. | A | TO | BLK | STL | Pts |
|---------|-------|----|-----|------|-------|------|------|---|----|-----|-----|-----|
| VCU | 11/6 | * | 18 | 1-2 | 0-0 | 2-2 | 1 | 0 | 2 | 0 | 0 | 4 |
| HOW | 11/12 | * | 19 | 1-2 | 0-0 | 0-0 | 3 | 0 | 2 | 1 | 0 | 2 |
| at Loy | 11/17 | * | 16 | 4-6 | 0-0 | 0-0 | 2 | 1 | 0 | 0 | 0 | 8 |
| at DC | 11/24 | * | 27 | 4-8 | 0-1 | 2-2 | 2 | 0 | 1 | 0 | 1 | 10 |
| ECU | 11/27 | * | 15 | 0-1 | 0-0 | 0-0 | 2 | 0 | 3 | 0 | 1 | 0 |
| at Hart | 11/30 | * | 18 | 1-2 | 0-0 | 0-0 | 1 | 0 | 0 | 1 | 3 | 2 |
| at Fair | 12/2 | * | 30 | 4-7 | 0-0 | 0-0 | 5 | 1 | 0 | 0 | 1 | 8 |
| UOFR | 12/5 | * | 29 | 2-7 | 0-0 | 1-2 | 5 | 0 | 1 | 0 | 0 | 5 |
| at ODU | 12/8 | * | 11 | 3-5 | 0-0 | 0-0 | 2 | 0 | 0 | 0 | 0 | 6 |
| at NSU | 12/21 | * | 10 | 1-3 | 0-0 | 0-0 | 3 | 0 | 0 | 0 | 0 | 2 |
| GW | 12/28 | * | 12 | 1-2 | 0-0 | 0-0 | 3 | 0 | 0 | 0 | 1 | 2 |
| at Hof | 1/4 | * | 21 | 2-3 | 0-0 | 0-0 | 2 | 1 | 0 | 0 | 3 | 4 |
| at NU | 1/6 | * | 17 | 0-2 | 0-0 | 2-2 | 1 | 1 | 0 | 0 | 0 | 2 |
| UNCW | 1/11 | | 11 | 0-1 | 0-0 | 0-0 | 3 | 0 | 2 | 1 | 1 | 0 |
| COFC | 1/13 | | 21 | 1-5 | 0-0 | 1-2 | 5 | 1 | 1 | 1 | 2 | 3 |
| ELON | 1/20 | * | 23 | 2-3 | 0-0 | 1-1 | 4 | 0 | 1 | 0 | 2 | 5 |
| at JMU | 1/25 | * | 15 | 1-1 | 0-0 | 0-0 | 1 | 0 | 1 | 0 | 0 | 2 |
| at Tow | 1/27 | * | 15 | 2-5 | 0-0 | 0-0 | 2 | 0 | 2 | 0 | 0 | 4 |
| DEL | 2/1 | * | 12 | 1-5 | 0-0 | 0-0 | 2 | 0 | 0 | 0 | 1 | 2 |
| DREXEL | 2/3 | * | 6 | 0-1 | 0-0 | 0-0 | 0 | 0 | 1 | 0 | 0 | 0 |
| at CofC | 2/8 | | 31 | 4-9 | 0-0 | 6-6 | 12 | 0 | 0 | 1 | 0 | 14 |
| at UNCW | 2/10 | | | | | | | | | | | |
| at Elon | 2/17 | * | 11 | 1-1 | 0-0 | 0-0 | 1 | 0 | 2 | 1 | 1 | 2 |
| TOW | 2/22 | * | 31 | 8-9 | 0-0 | 1-1 | 5 | 1 | 2 | 0 | 0 | 17 |
| JMU | 2/24 | * | 16 | 1-7 | 0-0 | 0-0 | 1 | 0 | 1 | 0 | 0 | 2 |
| at DU | 3/1 | * | 33 | 2-5 | 0-0 | 0-0 | 6 | 0 | 1 | 0 | 0 | 4 |
| at Del | 3/3 | * | 17 | 4-11 | 0-0 | 0-2 | 3 | 1 | 4 | 1 | 1 | 8 |
| NU | 3/7 | * | 24 | 5-5 | 0-0 | 0-0 | 0 | 2 | 2 | 0 | 0 | 10 |

>> ROGERS' CAREER STATISTICS

| Season | GP | GS | Min/Avg | FG-FGA | Pct | 3pt-Att | Pct | FT-FTA | Pct | Off | Def | Reb | Avg | PF | FO | A | TO | Blk | S | TP | Avg |
|---------|----|----|----------|--------|------|---------|------|--------|------|-----|-----|-----|-----|-----|----|----|----|-----|----|-----|-----|
| 2017-18 | 29 | 0 | 263/9.1 | 24-47 | .511 | 0-0 | .000 | 9-13 | .692 | 12 | 40 | 52 | 1.8 | 55 | 1 | 7 | 15 | 6 | 10 | 57 | 2.0 |
| 2018-19 | 27 | 24 | 515/18.1 | 56-118 | .475 | 0-1 | .000 | 16-20 | .800 | 27 | 50 | 77 | 2.9 | 89 | 1 | 9 | 30 | 9 | 16 | 128 | 4.7 |
| CAREER | 56 | 24 | 778/13.9 | 801-65 | .485 | 0-1 | .000 | 25-33 | .758 | 39 | 90 | 129 | 2.3 | 144 | 2 | 16 | 45 | 15 | 26 | 185 | 3.3 |



#30 VICTORIA REYNOLDS

JUNIOR - FORWARD

FAIRFAX, VA./ARCHBISCHOP SPALDING

>> REYNOLDS' CAREER HIGHS

MINUTES

| | | |
|--------|----|-----------------------|
| Season | 48 | at Charleston, 2/8/19 |
| Career | 48 | at Charleston, 2/8/19 |

POINTS

| | | |
|--------|----|--------------------------------|
| Season | 17 | (2x) last time at CofC, 2/8/19 |
| Career | 22 | at St. Francis (Pa.), 12/2/17 |

REBOUNDS

| | | |
|--------|----|-----------------------------|
| Season | 15 | vs. East Carolina, 11/27/18 |
| Career | 18 | vs. Charleston, 1/26/18 |

FIELD GOALS

| | | |
|--------|---|----------------------------|
| Season | 7 | vs. James Madison, 2/24/19 |
| Career | 9 | vs. Northeastern, 2/11/18 |

3-POINT FIELD GOALS

| | | |
|--------|---|---------------------|
| Season | 4 | vs. Towson, 2/22/19 |
| Career | 4 | vs. Towson, 2/22/19 |

FREE THROWS

| | | |
|--------|---|----------------------------|
| Season | 7 | at Charleston, 2/8/19 |
| Career | 9 | vs. Old Dominion, 12/17/17 |

ASSISTS

| | | |
|--------|---|----------------------------|
| Season | 7 | vs. Charleston, 1/13/19 |
| Career | 8 | at East Carolina, 11/21/17 |

STEALS

| | | |
|--------|---|-------------------------------|
| Season | 4 | (2x) last time vs. NU, 3/7/19 |
| Career | 7 | vs. Hofstra, 1/28/18 |

BLOCKS

| | | |
|--------|---|-------------------------------|
| Season | 3 | (2x) last time vs. NU, 3/7/19 |
| Career | 3 | (3x) last time vs. NU, 3/7/19 |

MISCELLANEOUS

| | |
|---------------------------|----|
| Career in Double Figures | 37 |
| 2018-19 in Double Figures | 18 |

>> 2018-19 GAME-BY-GAME

| Opp | Date | GS | Min | FG-A | 3FG-A | FT-A | Reb. | A | TO | BLK | STL | Pts |
|---------|-------|----|-----|------|-------|------|------|---|----|-----|-----|-----|
| VCU | 11/6 | * | 37 | 4-7 | 0-0 | 0-0 | 4 | 5 | 2 | 0 | 0 | 8 |
| HOW | 11/12 | * | 26 | 3-10 | 0-2 | 4-6 | 5 | 3 | 1 | 0 | 2 | 10 |
| at Loy | 11/17 | * | 33 | 4-10 | 0-0 | 2-2 | 5 | 2 | 7 | 0 | 0 | 10 |
| at DC | 11/24 | * | 29 | 6-8 | 0-0 | 1-1 | 3 | 2 | 2 | 0 | 1 | 13 |
| ECU | 11/27 | * | 35 | 4-6 | 1-1 | 6-6 | 15 | 4 | 6 | 2 | 1 | 15 |
| at Hart | 11/30 | * | 29 | 1-6 | 0-0 | 2-2 | 7 | 1 | 5 | 0 | 3 | 4 |
| at Fair | 12/2 | * | 30 | 4-8 | 0-0 | 4-6 | 4 | 1 | 3 | 0 | 3 | 12 |
| UOFR | 12/5 | * | 35 | 5-8 | 2-2 | 2-2 | 6 | 0 | 5 | 0 | 1 | 14 |
| at ODU | 12/8 | * | 37 | 4-10 | 1-4 | 4-4 | 6 | 2 | 5 | 2 | 1 | 13 |
| at NSU | 12/21 | * | 35 | 2-5 | 1-2 | 6-8 | 9 | 2 | 2 | 3 | 1 | 11 |
| GW | 12/28 | | 15 | 3-7 | 2-2 | 0-0 | 5 | 2 | 0 | 0 | 0 | 8 |
| at Hof | 1/4 | | 13 | 0-1 | 0-0 | 0-0 | 1 | 0 | 4 | 0 | 0 | 0 |
| at NU | 1/6 | | 30 | 4-10 | 1-3 | 0-0 | 3 | 2 | 5 | 0 | 2 | 9 |
| UNCW | 1/11 | * | 31 | 6-9 | 1-2 | 4-5 | 7 | 0 | 4 | 2 | 1 | 17 |
| COFC | 1/13 | * | 36 | 3-8 | 2-2 | 0-0 | 10 | 7 | 4 | 1 | 4 | 8 |
| ELON | 1/20 | * | 37 | 3-6 | 0-1 | 5-8 | 6 | 3 | 0 | 2 | 1 | 11 |
| at JMU | 1/25 | * | 34 | 1-4 | 1-2 | 2-2 | 0 | 0 | 2 | 0 | 1 | 5 |
| at Tow | 1/27 | * | 26 | 6-11 | 0-1 | 0-0 | 3 | 0 | 2 | 0 | 1 | 12 |
| DEL | 2/1 | * | 39 | 6-11 | 0-2 | 1-2 | 6 | 3 | 2 | 2 | 3 | 14 |
| DREXEL | 2/3 | * | 39 | 3-13 | 0-4 | 0-0 | 9 | 2 | 4 | 1 | 1 | 6 |
| at CofC | 2/8 | * | 48 | 5-15 | 0-2 | 7-8 | 5 | 3 | 1 | 1 | 0 | 17 |
| at UNCW | 2/10 | * | 40 | 4-11 | 0-2 | 2-2 | 4 | 3 | 6 | 0 | 1 | 10 |
| at Elon | 2/17 | * | 36 | 3-7 | 1-1 | 5-7 | 5 | 1 | 3 | 1 | 2 | 12 |
| TOW | 2/22 | * | 39 | 5-10 | 4-6 | 1-2 | 0 | 3 | 5 | 0 | 1 | 15 |
| JMU | 2/24 | * | 32 | 7-12 | 0-3 | 2-2 | 3 | 1 | 1 | 0 | 1 | 16 |
| at DU | 3/1 | * | 24 | 2-7 | 0-2 | 0-0 | 8 | 2 | 7 | 0 | 1 | 4 |
| at Del | 3/3 | * | 24 | 3-8 | 0-2 | 0-0 | 4 | 2 | 4 | 0 | 1 | 6 |
| NU | 3/7 | * | 34 | 6-10 | 1-3 | 2-2 | 4 | 5 | 5 | 3 | 4 | 15 |

>> REYNOLDS' CAREER STATISTICS

| Season | GP | GS | Min/Avg | FG-FGA | Pct | 3pt-Att | Pct | FT-FTA | Pct | Off | Def | Reb | Avg | PF | FO | A | TO | Blk | S | TP | Avg |
|---------|----|----|-----------|---------|------|---------|------|---------|------|-----|-----|-----|-----|-----|----|-----|-----|-----|-----|-----|------|
| 2016-17 | 28 | 0 | 466/16.6 | 51-104 | .490 | 5-12 | .417 | 36-46 | .783 | 44 | 45 | 89 | 3.2 | 42 | 0 | 21 | 30 | 5 | 33 | 143 | 5.1 |
| 2017-18 | 30 | 30 | 977/32.6 | 125-270 | .463 | 8-34 | .235 | 50-68 | .735 | 65 | 147 | 212 | 7.1 | 77 | 1 | 60 | 69 | 22 | 71 | 308 | 10.3 |
| 2018-19 | 28 | 25 | 901/32.2 | 107-238 | .450 | 19-52 | .365 | 62-77 | .805 | 24 | 126 | 150 | 5.4 | 73 | 5 | 61 | 97 | 19 | 39 | 295 | 10.5 |
| CAREER | 86 | 55 | 2344/27.3 | 283-612 | .462 | 32-98 | .327 | 148-191 | .775 | 133 | 318 | 451 | 5.2 | 192 | 6 | 142 | 196 | 46 | 143 | 746 | 8.7 |



#32 CAROLINE STOVER

FRESHMAN - CENTER

PLYMPTON, MASS. - CARDINAL SPELLMAN

>> STOVER'S CAREER STATISTICS

MINUTES

| | | |
|--------|---|---------------------|
| Season | 1 | at Loyola, 11/14/18 |
| Career | 1 | at Loyola, 11/14/18 |

POINTS

| | |
|--------|---|
| Season | - |
| Career | - |

REBOUNDS

| | |
|--------|---|
| Season | - |
| Career | - |

FIELD GOALS

| | |
|--------|---|
| Season | - |
| Career | - |

3-POINT FIELD GOALS

| | |
|--------|---|
| Season | - |
| Career | - |

FREE THROWS

| | |
|--------|---|
| Season | - |
| Career | - |

ASSISTS

| | |
|--------|---|
| Season | - |
| Career | - |

STEALS

| | |
|--------|---|
| Season | - |
| Career | - |

BLOCKS

| | |
|--------|---|
| Season | - |
| Career | - |

MISCELLANEOUS

| | |
|---------------------------|---|
| Career in Double Figures | 0 |
| 2018-19 in Double Figures | 0 |

>> 2018-19 GAME-BY-GAME

| Opp | Date | GS | Min | FG-A | 3FG-A | FT-A | Reb. | A | TO | BLK | STP |
|---------|-------|----|-----|------|-------|------------------|------|---|----|-----|-----|
| VCU | 11/6 | | | DNP | - | COACH'S DECISION | | | | | |
| HOW | 11/12 | | | DNP | - | COACH'S DECISION | | | | | |
| at Loy | 11/17 | 1 | 0-2 | 0-0 | 0-0 | 0 | 0 | 0 | 0 | 0 | 0 |
| at DC | 11/24 | | | DNP | - | COACH'S DECISION | | | | | |
| ECU | 11/27 | | | DNP | - | COACH'S DECISION | | | | | |
| at Hart | 11/30 | | | DNP | - | COACH'S DECISION | | | | | |
| at Fair | 12/2 | | | DNP | - | COACH'S DECISION | | | | | |
| UOFR | 12/5 | | | DNP | - | COACH'S DECISION | | | | | |
| at ODU | 12/8 | | | DNP | - | COACH'S DECISION | | | | | |
| at NSU | 12/21 | | | DNP | - | COACH'S DECISION | | | | | |
| GW | 12/28 | 1 | 0-0 | 0-0 | 0-0 | 0 | 0 | 0 | 0 | 0 | 0 |
| at Hof | 1/4 | | | DNP | - | COACH'S DECISION | | | | | |
| at NU | 1/6 | | | DNP | - | COACH'S DECISION | | | | | |
| UNCW1 | 1/11 | | | DNP | - | COACH'S DECISION | | | | | |
| COFC | 1/13 | | | DNP | - | COACH'S DECISION | | | | | |
| ELON | 1/20 | | | DNP | - | COACH'S DECISION | | | | | |
| at JMU | 1/25 | | | DNP | - | COACH'S DECISION | | | | | |
| at Tow | 1/27 | | | DNP | - | COACH'S DECISION | | | | | |
| DEL | 2/1 | | | DNP | - | COACH'S DECISION | | | | | |
| DREXEL | 2/3 | | | DNP | - | COACH'S DECISION | | | | | |
| at CofC | 2/8 | | | DNP | - | COACH'S DECISION | | | | | |
| at UNCW | 2/10 | | | DNP | - | COACH'S DECISION | | | | | |
| at Elon | 2/17 | | | DNP | - | COACH'S DECISION | | | | | |
| TOW | 2/22 | | | DNP | - | COACH'S DECISION | | | | | |
| JMU | 2/24 | | | DNP | - | COACH'S DECISION | | | | | |
| at DU | 3/1 | | | DNP | - | COACH'S DECISION | | | | | |
| NU | 3/7 | | | DNP | - | COACH'S DECISION | | | | | |

>> STOVER'S CAREER STATISTICS

| Season | GP | GS | Min/Avg | FG-FGA | Pct | 3pt-Att | Pct | FT-FTA | Pct | Off | Def | Reb | Avg | PF | FO | A | TO | Blk | S | TP | Avg |
|---------|----|----|---------|--------|------|---------|------|--------|------|-----|-----|-----|-----|----|----|---|----|-----|---|----|-----|
| 2018-19 | 2 | 0 | 1/0.5 | 0-2 | .000 | 0-0 | .000 | 0-0 | .000 | 0 | 0 | 0 | 0.0 | 0 | 0 | 0 | 0 | 0 | 0 | 0 | 0.0 |
| CAREER | 2 | 0 | 1/0.5 | 0-2 | .000 | 0-0 | .000 | 0-0 | .000 | 0 | 0 | 0 | 0.0 | 0 | 0 | 0 | 0 | 0 | 0 | 0 | 0.0 |



2018-19 Tribe Women's Basketball



W&M Women's Basketball
William & Mary Season Schedule/Results & Leaders (as of Mar 07, 2019)
All games

| RECORD: | OVERALL | HOME | AWAY | NEUTRAL |
|----------------|----------------|-------------|-------------|----------------|
| ALL GAMES | 13-15 | 6-7 | 7-8 | 0-0 |
| CONFERENCE | 6-11 | 2-6 | 4-5 | 0-0 |
| NON-CONFERENCE | 7-4 | 4-1 | 3-3 | 0-0 |

| Date | Opponent | Score | Att. | High Points | High Rebounds |
|-------------|---------------------|--------------|-------------|------------------------|------------------------|
| 11/06/18 | VCU | 55-72 L | 684 | (15)Boggs, Bianca | (6)Boggs, Bianca |
| 11/12/18 | HOWARD | W 88-75 | 564 | (26)Boggs, Bianca | (9)Boggs, Bianca |
| 11/17/18 | at Loyola | W 65-49 | 352 | (14)Boggs, Bianca | (6)Reynolds, Victoria |
| 11/24/18 | at Davidson | 65-76 L | 412 | (18)Boggs, Bianca | (10)Boggs, Bianca |
| 11/27/18 | EAST CAROLINA | W 63-43 | 574 | (15)Reynolds, Victoria | (15)Reynolds, Victoria |
| 11/30/18 | at HARTFORD | 45-50 L | 649 | (14)Hodgson, Eva | (7)Reynolds, Victoria |
| 12/02/18 | at Fairfield | W 60-54 | 627 | (22)Boggs, Bianca | (5)Hodgson, Eva |
| | | | | | (5)Rogers, Gabby |
| | | | | | (5)Boggs, Bianca |
| 12/05/18 | RICHMOND | W 65-55 | 634 | (15)Hodgson, Eva | (6)Reynolds, Victoria |
| 12/8/18 | at Old Dominion | 69-83 L | 1802 | (18)Birdsong, Harper | (6)Reynolds, Victoria |
| | | | | | (6)Eichner, Bailey |
| 12/21/18 | at Norfolk State | W 55-44 | 246 | (14)Birdsong, Harper | (9)Reynolds, Victoria |
| 12/29/18 | GEORGE WASHINGTON | W 73-59 | 611 | (26)Boggs, Bianca | (10)Boggs, Bianca |
| 1/4/19 | *at Hofstra | W 60-55 | 323 | (22)Boggs, Bianca | (10)Boggs, Bianca |
| 01/06/19 | *at Northeastern | 74-88 L | 540 | (21)Boggs, Bianca | (6)Boggs, Bianca |
| 01/11/19 | *UNCW | W 70-64 | 657 | (25)Boggs, Bianca | (7)Reynolds, Victoria |
| | | | | | (7)Pollard, Nyla |
| 01/13/19 | *COL. OF CHARLESTON | 54-66 L | 582 | (18)Boggs, Bianca | (10)Reynolds, Victoria |
| 01/20/19 | *ELON | W 65-60 | 904 | (13)Birdsong, Harper | (6)Reynolds, Victoria |
| | | | | (13)Boggs, Bianca | |
| 1/25/19 | *at James Madison | 48-65 L | 2234 | (13)Hodgson, Eva | (11)Boggs, Bianca |
| 1/27/19 | *at Towson | W 80-69 | 609 | (22)Boggs, Bianca | (8)Jones, Misha |
| 02/01/19 | *DELAWARE | 59-70 L | 634 | (14)Reynolds, Victoria | (8)Boggs, Bianca |
| 02/03/19 | *DREXEL | 58-62 L | 962 | (17)Boggs, Bianca | (9)Boggs, Bianca |
| | | | | | (9)Reynolds, Victoria |
| 02/08/19 | *at Charleston | 77-79 Lo2 | 3031 | (23)Boggs, Bianca | (12)Rogers, Gabby |
| 02/10/19 | *at UNCW | 58-66 L | 945 | (24)Hodgson, Eva | (10)Boggs, Bianca |
| 2/17/19 | *at Elon | W 64-59 | 527 | (14)Hodgson, Eva | (9)Boggs, Bianca |
| 02/22/19 | *TOWSON | 75-82 L | 727 | (18)Boggs, Bianca | (5)Rogers, Gabby |
| 02/24/19 | *JAMES MADISON | 65-78 L | 744 | (16)Reynolds, Victoria | (6)Boggs, Bianca |
| | | | | (16)Boggs, Bianca | |
| 3/1/19 | *at Drexel | Wo3 77-72 | 628 | (32)Boggs, Bianca | (8)Reynolds, Victoria |
| 3/3/19 | *at Delaware | 52-68 L | 2281 | (17)Hodgson, Eva | (8)Boggs, Bianca |
| 03/07/19 | *NORTHEASTERN | 71-75 L | 515 | (17)Boggs, Bianca | (5)Boggs, Bianca |

* - CAA game

| Attendance Summary | Games | Attend | Avg/Game |
|---------------------------|--------------|---------------|-----------------|
| Home | 13 | 8792 | 676 |
| Away | 15 | 15206 | 1014 |
| Neutral | 0 | 0 | 0 |
| Total | 28 | 23998 | 857 |



W&M Women's Basketball
William & Mary Combined Team Statistics (as of Mar 07, 2019)
All games

| RECORD: | OVERALL | HOME | AWAY | NEUTRAL |
|----------------|----------------|-------------|-------------|----------------|
| ALL GAMES | 13-15 | 6-7 | 7-8 | 0-0 |
| CONFERENCE | 6-11 | 2-6 | 4-5 | 0-0 |
| NON-CONFERENCE | 7-4 | 4-1 | 3-3 | 0-0 |

| ## | Player | gp-gs | min | avg | Total | | 3-Point | | F-Throw | | Rebounds | | | | pf | dq | a | to | blk | stl | pts | avg |
|----------------|--------------------|-------|------|------|----------|------|---------|------|---------|------|----------|-----|------|------|-----|----|-----|-----|-----|-----|------|------|
| | | | | | fg-fga | fg% | 3fg-fga | 3fg% | ft-fa | ft% | off | def | tot | avg | | | | | | | | |
| 02 | Boggs, Bianca | 28-28 | 1006 | 35.9 | 162-368 | .440 | 39-114 | .342 | 115-155 | .742 | 37 | 157 | 194 | 6.9 | 66 | 3 | 119 | 125 | 25 | 68 | 478 | 17.1 |
| 30 | Reynolds, Victoria | 28-25 | 901 | 32.2 | 107-238 | .450 | 19-52 | .365 | 62-77 | .805 | 24 | 126 | 150 | 5.4 | 73 | 5 | 61 | 97 | 19 | 39 | 295 | 10.5 |
| 10 | Hodgson, Eva | 28-28 | 930 | 33.2 | 91-205 | .444 | 34-85 | .400 | 61-74 | .824 | 28 | 54 | 82 | 2.9 | 73 | 2 | 88 | 73 | 12 | 41 | 277 | 9.9 |
| 12 | Birdsong, Harper | 28-4 | 556 | 19.9 | 90-233 | .386 | 50-128 | .391 | 32-44 | .727 | 15 | 36 | 51 | 1.8 | 49 | 1 | 28 | 50 | 6 | 18 | 262 | 9.4 |
| 25 | Rogers, Gabby | 27-24 | 515 | 19.1 | 56-118 | .475 | 0-1 | .000 | 16-20 | .800 | 27 | 50 | 77 | 2.9 | 89 | 1 | 9 | 30 | 9 | 16 | 128 | 4.7 |
| 11 | Pollard, Nyla | 28-24 | 781 | 27.9 | 39-129 | .302 | 17-58 | .293 | 27-44 | .614 | 26 | 51 | 77 | 2.8 | 61 | 3 | 67 | 50 | 3 | 27 | 122 | 4.4 |
| 15 | Krause, Emma | 28-3 | 391 | 14.0 | 39-109 | .358 | 28-83 | .337 | 8-14 | .571 | 13 | 42 | 55 | 2.0 | 46 | 1 | 16 | 15 | 12 | 6 | 114 | 4.1 |
| 05 | Jones, Misha | 28-3 | 375 | 13.4 | 34-80 | .425 | 19-56 | .339 | 18-20 | .900 | 14 | 39 | 53 | 1.9 | 49 | 0 | 32 | 24 | 7 | 5 | 105 | 3.8 |
| 00 | Underwood, Libby | 14-0 | 69 | 4.9 | 5-14 | .357 | 0-3 | .000 | 3-5 | .600 | 4 | 0 | 4 | 0.3 | 1 | 0 | 2 | 6 | 1 | 1 | 13 | 0.9 |
| 21 | Eichner, Bailey | 18-0 | 126 | 7.0 | 5-16 | .313 | 1-5 | .200 | 1-4 | .250 | 7 | 18 | 25 | 1.4 | 16 | 0 | 8 | 5 | 2 | 3 | 12 | 0.7 |
| 20 | Smith, Chandler | 12-1 | 61 | 5.1 | 1-3 | .333 | 0-0 | .000 | 1-4 | .250 | 3 | 12 | 15 | 1.3 | 8 | 0 | 1 | 7 | 4 | 1 | 3 | 0.3 |
| 03 | Taylor, Ashley | 5-0 | 13 | 2.6 | 0-5 | .000 | 0-4 | .000 | 1-2 | .500 | 0 | 0 | 0 | 0.0 | 0 | 0 | 0 | 0 | 0 | 0 | 1 | 0.2 |
| 32 | Stover, Caroline | 2-0 | 1 | 0.5 | 0-2 | .000 | 0-0 | .000 | 0-0 | .000 | 0 | 0 | 0 | 0.0 | 0 | 0 | 0 | 0 | 0 | 0 | 0 | 0.0 |
| Team | | | | | | | | | | | 55 | 69 | 124 | | | | 13 | | | | | |
| Total..... | | 28 | 5725 | | 629-1520 | .414 | 207-589 | .351 | 345-463 | .745 | 253 | 654 | 907 | 32.4 | 531 | 16 | 431 | 495 | 100 | 225 | 1810 | 64.6 |
| Opponents..... | | 28 | 5724 | | 645-1594 | .405 | 139-487 | .285 | 409-570 | .718 | 353 | 683 | 1036 | 37.0 | 516 | 11 | 350 | 492 | 99 | 266 | 1838 | 65.6 |

| TEAM STATISTICS | | | | WM | OPP | Date | Opponent | Score | Att. | | | | | |
|------------------------|--|--|--|----------|----------|------------|--------------------|-------|-------|------|--------|--------------|--|--|
| SCORING | | | | 1810 | 1838 | 11/06/18 | VCU | L | 55-72 | 684 | | | | |
| Points per game | | | | 64.6 | 65.6 | 11/12/18 | HOWARD | W | 88-75 | 564 | | | | |
| Scoring margin | | | | -1.0 | - | 11/17/18 | at Loyola | W | 65-49 | 352 | | | | |
| FIELD GOALS-ATT | | | | 629-1520 | 645-1594 | 11/24/18 | at Davidson | L | 65-76 | 412 | | | | |
| Field goal pct | | | | .414 | .405 | 11/27/18 | EAST CAROLINA | W | 63-43 | 574 | | | | |
| 3 POINT FG-ATT | | | | 207-589 | 139-487 | 11/30/18 | at HARTFORD | L | 45-50 | 649 | | | | |
| 3-point FG pct | | | | .351 | .285 | 12/02/18 | at Fairfield | W | 60-54 | 627 | | | | |
| 3-pt FG made per game | | | | 7.4 | 5.0 | 12/05/18 | RICHMOND | W | 65-55 | 634 | | | | |
| FREE THROWS-ATT | | | | 345-463 | 409-570 | 12/8/18 | at Old Dominion | L | 69-83 | 1802 | | | | |
| Free throw pct | | | | .745 | .718 | 12/21/18 | at Norfolk State | W | 55-44 | 246 | | | | |
| F-Throws made per game | | | | 12.3 | 14.6 | 12/29/18 | GEORGE WASHINGTON | W | 73-59 | 611 | | | | |
| REBOUNDS | | | | 907 | 1036 | * 1/4/19 | at Hofstra | W | 60-55 | 323 | | | | |
| Rebounds per game | | | | 32.4 | 37.0 | * 01/06/19 | atNortheastern | L | 74-88 | 540 | | | | |
| Rebounding margin | | | | -4.6 | - | * 01/11/19 | UNCW | W | 70-64 | 657 | | | | |
| ASSISTS | | | | 431 | 350 | * 01/13/19 | COL. OF CHARLESTON | L | 54-66 | 582 | | | | |
| Assists per game | | | | 15.4 | 12.5 | * 01/20/19 | ELON | W | 65-60 | 904 | | | | |
| TURNOVERS | | | | 495 | 492 | * 1/25/19 | at James Madison | L | 48-65 | 2234 | | | | |
| Turnovers per game | | | | 17.7 | 17.6 | * 1/27/19 | at Towson | W | 80-69 | 609 | | | | |
| Turnover margin | | | | -0.1 | - | * 02/01/19 | DELAWARE | L | 59-70 | 634 | | | | |
| Assist/turnover ratio | | | | 0.9 | 0.7 | * 02/03/19 | DREXEL | L | 58-62 | 962 | | | | |
| STEALS | | | | 225 | 266 | * 02/08/19 | at Charleston | Lo2 | 77-79 | 3031 | | | | |
| Steals per game | | | | 8.0 | 9.5 | * 02/10/19 | atUNCW | L | 58-66 | 945 | | | | |
| BLOCKS | | | | 100 | 99 | * 2/17/19 | at Elon | W | 64-59 | 527 | | | | |
| Blocks per game | | | | 3.6 | 3.5 | * 02/22/19 | TOWSON | L | 75-82 | 727 | | | | |
| ATTENDANCE | | | | 8792 | 15206 | * 02/24/19 | JAMES MADISON | L | 65-78 | 744 | | | | |
| Homegames-Avg/Game | | | | 13-676 | 15-1014 | * 3/1/19 | at Drexel | Wo3 | 77-72 | 628 | | | | |
| Neutral site-Avg/Game | | | | - | 0-0 | * 3/3/19 | at Delaware | L | 52-68 | 2281 | | | | |
| | | | | | | * 03/07/19 | NORTHEASTERN | L | 71-75 | 515 | | | | |
| Score by Periods | | | | 1st | 2nd | 3rd | 4th | OT | OT2 | OT3 | Totals | | | |
| William & Mary | | | | 442 | 428 | 497 | 409 | 15 | 10 | 9 | 1810 | * - CAA game | | |
| Opponents | | | | 427 | 429 | 490 | 461 | 15 | 12 | 4 | 1838 | | | |



W&M Women's Basketball
William & Mary Combined Team Statistics (as of Mar 07, 2019)
CAA games only

| RECORD: | OVERALL | HOME | AWAY | NEUTRAL |
|----------------|---------|------|------|---------|
| ALL GAMES | 6-11 | 2-6 | 4-5 | 0-0 |
| CONFERENCE | 6-11 | 2-6 | 4-5 | 0-0 |
| NON-CONFERENCE | 0-0 | 0-0 | 0-0 | 0-0 |

| # | Player | gp-gs | min | avg | Total | | 3-Point | | F-Throw | | Rebounds | | | | pf | dq | a | to | blk | stl | pts | avg |
|----------------|--------------------|-------|------|------|----------|------|---------|------|---------|------|----------|-----|-----|------|-----|----|-----|-----|-----|-----|------|------|
| | | | | | fg-fga | fg% | 3fg-fga | 3fg% | ft-fga | ft% | off | def | tot | avg | | | | | | | | |
| 02 | Boggs, Bianca | 17-17 | 628 | 36.9 | 97-220 | .441 | 27-72 | .375 | 80-109 | .734 | 25 | 95 | 120 | 7.1 | 44 | 3 | 74 | 77 | 15 | 38 | 301 | 17.7 |
| 10 | Hodgson, Eva | 17-17 | 616 | 36.2 | 62-134 | .463 | 26-59 | .441 | 43-48 | .896 | 22 | 32 | 54 | 3.2 | 42 | 2 | 51 | 44 | 10 | 25 | 193 | 11.4 |
| 30 | Reynolds, Victoria | 17-15 | 561 | 33.0 | 67-153 | .438 | 12-38 | .316 | 31-40 | .775 | 14 | 63 | 77 | 4.5 | 46 | 3 | 37 | 59 | 12 | 26 | 177 | 10.4 |
| 12 | Birdsong, Harper | 17-0 | 331 | 19.5 | 48-138 | .348 | 26-74 | .351 | 19-25 | .760 | 10 | 26 | 36 | 2.1 | 26 | 0 | 14 | 27 | 4 | 8 | 141 | 8.3 |
| 25 | Rogers, Gabby | 16-13 | 308 | 19.3 | 34-73 | .466 | 0-0 | .000 | 11-14 | .786 | 17 | 31 | 48 | 3.0 | 54 | 1 | 7 | 21 | 7 | 9 | 79 | 4.9 |
| 05 | Jones, Misha | 17-2 | 263 | 15.5 | 23-54 | .426 | 14-40 | .350 | 13-14 | .929 | 5 | 29 | 34 | 2.0 | 32 | 0 | 21 | 17 | 5 | 4 | 73 | 4.3 |
| 11 | Pollard, Nyla | 17-17 | 467 | 27.5 | 22-70 | .314 | 12-35 | .343 | 15-26 | .577 | 18 | 29 | 47 | 2.8 | 34 | 2 | 39 | 29 | 2 | 14 | 71 | 4.2 |
| 15 | Krause, Emma | 17-3 | 217 | 12.8 | 20-54 | .370 | 14-43 | .326 | 3-4 | .750 | 4 | 19 | 23 | 1.4 | 28 | 1 | 7 | 11 | 5 | 2 | 57 | 3.4 |
| 00 | Underwood, Libby | 5-0 | 17 | 3.4 | 1-5 | .200 | 0-1 | .000 | 2-3 | .667 | 3 | 0 | 3 | 0.6 | 0 | 0 | 1 | 1 | 0 | 0 | 4 | 0.8 |
| 21 | Eichner, Bailey | 12-0 | 83 | 6.9 | 4-9 | .444 | 1-2 | .500 | 0-2 | .000 | 3 | 11 | 14 | 1.2 | 12 | 0 | 7 | 3 | 1 | 0 | 9 | 0.8 |
| 20 | Smith, Chandler | 5-1 | 29 | 5.8 | 1-2 | .500 | 0-0 | .000 | 0-2 | .000 | 2 | 5 | 7 | 1.4 | 4 | 0 | 0 | 3 | 2 | 1 | 2 | 0.4 |
| 03 | Taylor, Ashley | 2-0 | 5 | 2.5 | 0-1 | .000 | 0-1 | .000 | 0-0 | .000 | 0 | 0 | 0 | 0.0 | 0 | 0 | 0 | 0 | 0 | 0 | 0 | 0.0 |
| Team | | | | | | | | | | | 34 | 37 | 71 | | | | | 8 | | | | |
| Total..... | | 17 | 3525 | | 379-913 | .415 | 132-365 | .362 | 217-287 | .756 | 157 | 377 | 534 | 31.4 | 322 | 12 | 258 | 300 | 63 | 127 | 1107 | 65.1 |
| Opponents..... | | 17 | 3525 | | 415-1001 | .415 | 88-302 | .291 | 260-354 | .734 | 239 | 410 | 649 | 38.2 | 309 | 8 | 221 | 277 | 62 | 163 | 1178 | 69.3 |

| TEAM STATISTICS | WM | OPP | Date | Opponent | Score | Att. |
|------------------------|---------|----------|--------------|--------------------|------------|------|
| SCORING | 1107 | 1178 | * 1/4/19 | at Hofstra | W 60-55 | 323 |
| Points per game | 65.1 | 69.3 | * 01/06/19 | at Northeastern | L 74-88 | 540 |
| Scoring margin | -4.2 | - | * 01/11/19 | UNCW | W 70-64 | 657 |
| FIELD GOALS-ATT | 379-913 | 415-1001 | * 01/13/19 | COL. OF CHARLESTON | L 54-66 | 582 |
| Field goal pct | .415 | .415 | * 01/20/19 | ELON | W 65-60 | 904 |
| 3 POINT FG-ATT | 132-365 | 88-302 | * 1/25/19 | at James Madison | L 48-65 | 2234 |
| 3-point FG pct | .362 | .291 | * 1/27/19 | at Towson | W 80-69 | 609 |
| 3-pt FG made per game | 7.8 | 5.2 | * 02/01/19 | DELAWARE | L 59-70 | 634 |
| FREE THROWS-ATT | 217-287 | 260-354 | * 02/03/19 | DREXEL | L 58-62 | 962 |
| Free throw pct | .756 | .734 | * 02/08/19 | at Charleston | Lo2 77-79 | 3031 |
| F-Throws made per game | 12.8 | 15.3 | * 02/10/19 | at UNCW | L 58-66 | 945 |
| REBOUNDS | 534 | 649 | * 2/17/19 | at Elon | W 64-59 | 527 |
| Rebounds per game | 31.4 | 38.2 | * 02/22/19 | TOWSON | L 75-82 | 727 |
| Rebounding margin | -6.8 | - | * 02/24/19 | JAMES MADISON | L 65-78 | 744 |
| ASSISTS | 258 | 221 | * 3/1/19 | at Drexel | W o3 77-72 | 628 |
| Assists per game | 15.2 | 13.0 | * 3/3/19 | at Delaware | L 52-68 | 2281 |
| TURNOVERS | 300 | 277 | * 03/07/19 | NORTHEASTERN | L 71-75 | 515 |
| Turnovers per game | 17.6 | 16.3 | * - CAA game | | | |
| Turnover margin | -1.4 | - | | | | |
| Assist/turnover ratio | 0.9 | 0.8 | | | | |
| STEALS | 127 | 163 | | | | |
| Steals per game | 7.5 | 9.6 | | | | |
| BLOCKS | 63 | 62 | | | | |
| Blocks per game | 3.7 | 3.6 | | | | |
| ATTENDANCE | 5725 | 11118 | | | | |
| Home games-Avg/Game | 8-716 | 9-1235 | | | | |
| Neutral site-Avg/Game | - | 0-0 | | | | |

| Score by Periods | 1st | 2nd | 3rd | 4th | OT | OT2 | OT3 | Totals |
|------------------|-----|-----|-----|-----|----|-----|-----|--------|
| William & Mary | 267 | 249 | 305 | 252 | 15 | 10 | 9 | 1107 |
| Opponents | 270 | 269 | 315 | 293 | 15 | 12 | 4 | 1178 |

WILLIAM & MARY RADIO AND TV CHART

NOTES: W&M looks to get back into the win column as it hosts Hofstra for the final game of the regular season ... Senior Bianca Boggs leads the Tribe averaging 17.1 ppg and 6.9 rpg. Junior Victoria Reynolds is second on the team averaging 10.5 points per game. Freshman Eva Hodgson (9.9 ppg.) and redshirt sophomore Harper Birdsong (9.4 ppg.) are just outside of double-figures.

| RECORD | 2018-19 | LAST YR | STATS | W&M | OPP | HOF | OPP | W&M'S LAST THREE GAMES |
|---------------------|---------|---------|------------------|------|------|------|------|--|
| OVERALL | 13-15 | 16-14 | FG% | .414 | .405 | .390 | .422 | March 1 at Drexel* W, 77-72 (3ot) |
| CAA | 6-11 | 7-11 | FT% | .745 | .718 | .632 | .688 | Boggs 32 pts, Hodgson 16 pts, Jones 12 pts |
| HOME | 6-7 | 9-6 | 3PT% | .351 | .285 | .302 | .298 | March 3 at Delaware* L, 52-68 |
| AWAY/NEUTRAL | 7-8/0-0 | 7-7/0-1 | POINTS | 64.6 | 65.6 | 58.6 | 65.2 | Hodgson 17 pts, Boggs 9 pts, 8 reb, Rogers 8 pts |
| | | | REBOUNDS | 32.4 | 37.0 | 32.7 | 37.7 | March 7 NORTHEASTERN* L, 71-75 |
| | | | TURNOVERS | 17.7 | 17.6 | 18.5 | 16.8 | Boggs 17 pts, Reynolds 15 pts, Birdsong 11 pts |

| | | | |
|---|--|---|---|
|  | 0 LIBBY UNDERWOOD, G SO./5-9/RYE, N.H./PORTSMOUTH | <ul style="list-style-type: none"> Looking to expand her role during her second season with the Green and Gold. Had six points and added a block and assist against VCU (11/6). Scored a career-high 8 points and added out 3 assists against USC Upstate (12/5/17). Added four points in a rebound against Drexel (1/9/18). Grabbed a rebound in the CAA Quarterfinal against Elon (3/8/18). | POINTS 8 vs. USC Upstate (12/5/17) REBOUNDS 3 vs. Northeastern (1/21/18) ASSISTS 3 vs. USC Upstate (12/5/17) LAST GAME: DNP - COACH'S DECISION |
|  | 1 SYDNEY WAGNER, G SO./5-6/PHOENIXVILLE, PA./SPRING FORD SENIOR HIGH (STETSON) | <ul style="list-style-type: none"> Transfer from Stetson that has to sit out the 18-19 season due to NCAA Transfer rule. Appeared in 32 games with nine starters for the Hatters last season. Scored a career-high 20 points against Florida. Dropped 18 points against on 5-of-8 from 3-point range against Webber International. Averaged 6.0 ppg and knocked down 42 triples during her freshman season at Stetson. | POINTS 20 vs. Florida (11/22/17) REBOUNDS 5 vs. Lipscomb (2/19/18) ASSISTS 3 vs. Lipscomb (2/19/18) LAST GAME: DNP - TRANSFER RULE |
|  | 2 BIANCA BOGGS, G SR./5-8/WALDORF, MD./ST. MARY'S RYKEN | <ul style="list-style-type: none"> Named team captain for the 2018-19 season. Tabbed CAA Player of the Week for the week of Dec. 31. Has 16 20-point games, including nine 20-point games this season. Scored a season-high 32 points in the win at Drexel (3/1). Ranks sixth in school history with 1,403 career points. | POINTS 33 vs. St. Francis (Pa.) (12/2/17) REBOUNDS 11 (2x) last time vs. ECU (11/27/18) ASSISTS 8 (2x) last time vs. Towson (2/22/19) LAST GAME: 17 PTS, 5 REB, 7 AST |
|  | 3 ASHLEY TAYLOR, G JR./6-0/CHARLOTTESVILLE, VA./ST. ANNE'S BELLEFIELD | <ul style="list-style-type: none"> Has seen action in 21 games during her career with the Tribe. Made her first career basket, a 3-pointer, in the win against USC Upstate (12/5/17). Grabbed a pair of rebounds and added an assist against Loyola (11/25/17). Hit a basket and grabbed a board at Elon (3/1/18) | POINTS 3 vs. USC Upstate (12/5/17) REBOUNDS 2 vs. Loyola (11/25/17) ASSISTS 1 (4x) last time at Charleston (12/29/17) LAST GAME: DNP - COACH'S DECISION |
|  | 5 MISHA JONES, G/F SR./5-9/MANASSAS PARK, VA./BATTLEFIELD | <ul style="list-style-type: none"> Named a team captain for the second straight season this year. Had a career-high 12 points in a career-high 40 minutes at Drexel (3/1). Matched a then-career-high with nine points on three, 3-pointers vs. UNCW (1/11). Grabbed a career-high eight boards with eight points in the win at Towson (1/27). Made her first career start against George Washington (12/28) and scored four points. | POINTS 12 vs. Drexel (3/1/19) REBOUNDS 8 at Towson (1/27/19) ASSISTS 4 (3x) at Old Dominion (12/8/18) LAST GAME: 2 PTS, 2 REB IN 6 MINS |
|  | 10 EVA HODGSON, G FR./5-9/RINDGE, N.H./NEW HAMPTON SCHOOL | <ul style="list-style-type: none"> Named CAA Rookie of the Week for the weeks of Dec. 3, Jan. 7, Feb. 11, and March 4. Poured in a career-high 24 points at UNCW (2/10). Scored a then-career-high 18 points in the CAA opening win at Hofstra (1/4). Netted 13 pts and grabbed a CH six boards with five dimes in the win at Towson (1/20). Her parents and two brothers all played Division III basketball. | POINTS 24 at UNCW (2/10/19) REBOUNDS 6 (2x) last time vs. Drexel (2/3/19) ASSISTS 6 (4x) last time at Drexel (3/1/19) LAST GAME: 8 PTS, 3 REB, 4 AST |
|  | 11 NYLA POLLARD, G SO./5-9/VIRGINIA BEACH, VA./PRINCESS ANNE | <ul style="list-style-type: none"> Made her first start of the year & had a double-double (10 pts, 12 reb) vs. ECU (11/27). Scored nine points on three 3-pointers and grabbed two boards against JMU (2/24). Had nine points and added two rebounds, four assists, and a steal at Loyola (1/17). Chipped in nine points and a career-high six helpers in the win vs. UNCW (1/11). Scored a career-high 14 points, four assists, three rebounds against Upstate (12/5/17). | POINTS 14 vs. USC Upstate (12/5/17) REBOUNDS 12 vs. East Carolina (11/27/18) ASSISTS 5 (2x) last time vs. ODU (12/17/17) LAST GAME: 6 PTS, 1 REB, 1 AST |
|  | 12 HARPER BIRDSONG, G R-SO./5-10/SUFFOLK, VA./NANSEMOND SUFFOLK (GW) | <ul style="list-style-type: none"> Set a career-high with 18 points and four assists at Old Dominion (12/8). Notched 16 points and grabbed five rebounds at Northeastern (1/6). Scored 16 points and had three steals against George Washington (12/28). Had 15 points, three rebounds, one steal, and one block against Drexel (2/3). Appeared in nine games during her freshman season at George Washington. | POINTS 18 vs. Old Dominion (12/8/18) REBOUNDS 5 (2x) last time vs. Charleston (1/13/19) ASSISTS 4 at Old Dominion (12/8/18) LAST GAME: 11 PTS, 2 REB IN 14 MIN |
|  | 15 EMMA KRAUSE, F FR./6-2/PLANTATION, FLA./CARDINAL GIBBONS | <ul style="list-style-type: none"> Named CAA Rookie of the Week for the week of Dec. 24. Made her first career start and played 12 minutes against UNCW (1/11). Scored 13 points and grabbed four rebounds in the win at Towson (1/27). Netted a career-high 14 points on four 3-pointers against Howard (11/12). Hit three 3-pointers for nine points in the win against Elon (1/20). | POINTS 14 vs. Howard (11/12/18) REBOUNDS 5 vs. Old Dominion (12/8/18) ASSISTS 3 at Loyola (11/17/18) LAST GAME: 1 REB, 2 AST IN 9 MINS |
|  | 20 CHANDLER SMITH, C SR./6-3/PORT TOBACCO, MD./ST. MARY'S-RYKEN | <ul style="list-style-type: none"> Named a team captain for her senior season. Key reserve in the post that has appeared in 64 career games. Made her first career start at UNCW (2/10) & grabbed a CH six boards in a CH 20 mins. Tied a career-high with four points in a win at St. Francis (12/1/17). Rejected 28 shots during her career. | POINTS 4 (4x) last time at SFU (12/2/17) REBOUNDS 6 at UNCW (2/10/19) BLOCKS 3 vs. Mount St. Mary's (12/18/16) LAST GAME: DNP - COACH'S DECISION |
|  | 21 BAILEY EICHNER, G/F SO./6-1/CUDAHY, WISC./CUDAHY | <ul style="list-style-type: none"> Looking to expand her role this year after seeing action in 17 games last year. Scored a career-high five points against James Madison (2/24). Grabbed a career-high six rebounds at Old Dominion (12/8). Had a career-high four points and added a career-high five rebounds vs. JMU (2/2/18). Three sport athlete in high school playing basketball, volleyball, and track & field. | POINTS 5 vs. James Madison (2/24/19) REBOUNDS 6 at Old Dominion (12/8/18) ASSISTS 2 (2x) last time vs. JMU (2/24/19) LAST GAME: 2 PTS, 2 REB, 1 AST |
|  | 25 GABBY ROGERS, C SO./6-1/DALLAS, TEXAS/BISHOP LYNCH | <ul style="list-style-type: none"> Center that has started 25 games this season for the Tribe. Poured a career-high 17 points on 8-of-9 from the field against Towson (2/22). Notched her first career double-double with 14 points and 12 rebounds at CofC (2/8). Had 10 points on 5-of-5 from the field against Northeastern (3/7). Scored a career-high 10 points and a steal at Davidson (11/24). | POINTS 14 at Charleston (2/8/19) REBOUNDS 12 at Charleston (2/8/19) STEALS 3 (3x) last time at Hofstra (1/4/19) LAST GAME: 10 PTS, 2 AST IN 24 MIN |
|  | 30 VICTORIA REYNOLDS, F JR./5-10/FAIRFAX, VA./ARCHBISHOP SPALDING | <ul style="list-style-type: none"> Recorded a double-double with 15 points and 15 rebounds against ECU (11/27/18). Tied a season-high 17 points and five rebounds at Charleston (2/8). Notched a season-high 17 points with 7 rebs vs. UNCW (1/11). Poured in a career-high 22 points in the win at St. Francis (12/2/17). Grabbed 18 boards in the win against Charleston (1/26/18). | POINTS 22 vs. St. Francis (Pa.) (12/2/17) REBOUNDS 18 vs. Charleston (1/26/18) STEALS 7 vs. Hofstra (1/28/18) LAST GAME: 15 PTS, 4 REB, 4 AST |
|  | 32 CAROLINE STOVER, C FR./6-3/PLYMPTON, MASS./CARDINAL SPELLMAN | <ul style="list-style-type: none"> Made her collegiate debut in the Tribe's win over Loyola. Freshman post player looking to break into the post rotation this season. Played four seasons of varsity basketball at Cardinal Spellman. Ranked as the No. 131 in her class by Blue Star. Tabbed to the Catholic Central League All-Star team. | POINTS - REBOUNDS - STEALS - LAST GAME: DNP - COACH'S DECISION |

NOTES: