



## WILLIAM &amp; MARY

MEDIA RELATIONS DIRECTOR: Andrew Phillips / PHONE: (757) 221-3344 / CELL: (804) 840-4439 / EMAIL: atphillips01@wm.edu

## TRIBE BY THE NUMBERS

<b>6.3</b>	The Tribe is averaging 6.3 3-pointer makes per game, which ranks them third in the CAA.
<b>15.6</b>	W&M is tied for first in the CAA with Northeastern handing out 15.6 assists per game so far this season.
<b>20.1</b>	The Tribe ranks 57 in the NCAA forcing 20.1 turnovers per game. Of late, W&M has been even better forcing 23.8 per game in its last five contests.
<b>40.8%</b>	W&M ranks third in the CAA shooting 40.8-percent from the floor in its first eight games.
<b>47.1%</b>	Junior Victoria Reynolds ranks No. 10 in school history shooting 47.1-percent from the field during her career.
<b>57</b>	The senior class – Bianca Boggs, Misha Jones, and Chandler Smith – have won 57 games. They are just 10 wins away from becoming the winningest class in school history.
<b>70</b>	70 seems to be a magic number under Swanson. W&M has reached that mark 41 times under Swanson, and has posted a 36-5 mark when it scores more than 70 points.
<b>1076</b>	Boggs now has 1,076 career points that ranks her 17th in school history. With 28 points she will pass Abby Rendle '18 for 16th.

## WHEN REFERENCING WILLIAM &amp; MARY AND TRIBE:

**William & Mary:** preferred in all but formal treatments  
**W&M:** most informal, use as second reference or on scorebug  
**College of William & Mary:** preferred formal treatment  
**Do not use:** WM, William and Mary, College of William and Mary, The College of William and Mary, The College

The William & Mary Athletics official nickname is the Tribe. While the Griffin is the official mascot of William & Mary Tribe Athletics, do not reference teams or the school as the Griffins.

## GAME

11

## WILLIAM &amp; MARY (6-4, 0-0 CAA) vs. GEORGE WASHINGTON (2-9, 0-0 A-10)

Saturday, Dec. 28, 2018 | 2:00 PM | Williamsburg, Va. | Kaplan Arena  
 Video: Tribe Athletics TV | Live Stats: TribeAthletics.com

## SERIES HISTORY

<b>ALL-TIME</b>	Series Tied 10-10	Last: GW, 58-51 (Charles E. Smith Center) (11/18/12)
<b>AT W&amp;M</b>	W&M leads 7-4	Last: GW, 66-74 (Kaplan Arena) (12/28/11)

## W&amp;M NEWS AND NOTES

- The William & Mary women's basketball team concludes non-conference play as it welcomes defending Atlantic 10 champion George Washington to Kaplan Arena on Saturday, Dec. 29. Tipoff between the Tribe and the Colonials is set for 2 p.m.
- Today's contest is the fourth meeting between the Tribe and an Atlantic 10 opponent this season. The Tribe has played VCU, Davidson and Richmond so far this season and has posted a 1-2 record in those contests.
- W&M has finished non-conference play the last five seasons over .500, including setting the school record for non-conference wins with 10 in the 2016-17 season. The Tribe has also won nine games twice, and currently has won six games twice, during the current stretch.
- W&M has posted a 17-3 record during December dating back to the 2015-16 season. The Tribe went a perfect 6-0 in December of 2016. Coincidentally two of the Tribe's three December losses have come on Dec. 21.
- One key to the Tribe's success this season has been getting off to good starts. The Green and Gold has outscored opponents 163-148 in the first quarter this season. Furthermore, W&M is a perfect 6-0 when leading at the break.
- For the second time this season, W&M had a freshman named the CAA Rookie of the Week as freshman Emma Krause earned the honor for the week of Dec. 24. Krause scored seven points, including hitting a big 3-pointer late in the game to seal the win at Norfolk State. She joins her classmate Eva Hodgson, who earned the honor for the week of Dec. 3.
- Since starting to come off of the bench redshirt sophomore Harper Birdsong has been a huge spark. She has been in double-figures in five of the six games and is averaging 12.3 points per game in those six contests. The George Washington transfer is now averaging double-figures and is third on the team averaging 10.5 points per game.
- W&M has been clamping down on the defensive end of the floor of late as it has held four opponents to 50 points, or less. The Tribe has also limited five of the last six teams to fewer than 60 points. In Swanson's tenure the Tribe has posted a 20-2 record in games when its opponents have scored 50 points, or less. In this stretch, W&M has lowered its points against to 60.1, which ranks fourth in the CAA.
- Senior Bianca Boggs was announced as one of 30 national candidates for the Senior CLASS Award. The Senior CLASS Award focuses on the total student-athlete and encourages students to use their platform in athletics to make a positive impact as leaders in their communities. Boggs was the lone player from CAA women's basketball honored, and along with men's basketball player Paul Rowley, W&M was one of three DI schools with a candidate for the both the men's and women's Senior CLASS Award.
- After scoring double-figures in eight of the last nine games, junior Victoria Reynolds is second on the team in scoring averaging, while leading the squad in rebounding. Reynolds is averaging 11.0 points and 6.8 rebounds, while handing out 2.2 assists a night. The Fairfax, Va. native has started the last 40 contests for the Tribe and is averaging 10.5 points per game during that stretch.
- Boggs has been in double-figures in eight of 10 games this season, and has accomplished that feat in 33 of her last 40 contests. Boggs was selected to the Preseason All-CAA First-Team after a breakout junior season. The senior captain leads the team with 15.5 points per night, and has added 6.4 rebounds and 4.2 assists per night.
- Hodgson has started every game this season and the early returns on the rookie point guard have been good. The freshman has been in double-figures in three games, and is averaging 7.3 points per game, with 2.4 rebounds, and 3.1 helpers per contest. Hodgson scored a season-high 15 points versus Richmond.

	Nov. 6	VCU	L, 55-72	Senior Bianca Boggs scored 15 points, but the Tribe couldn't overcome an early scoring drought falling to in-state rival VCU on opening night.
	<b>NOV. 12 HOWARD</b>	<b>W, 88-75</b>		Four players scored in double-figures as the Tribe picked up its first victory of the season. Senior Bianca Boggs led the Tribe with 26 points, nine rebounds, and seven assists.
	Nov. 17	at Loyola (Md.)	W, 65-49	The Tribe led throughout as it won its first road game of the season with a convincing 65-49 decision at Davidson. Boggs (14) and Reynolds (10) were both in double-figures.
	Nov. 24	at Davidson	L, 65-76	W&M fought all afternoon, but Davidson pulled away down the stretch as it fell to Davidson 76-65. Bianca Boggs notched a double-double with 18 points and 10 rebs.
	<b>NOV. 27 ECU</b>	<b>W, 63-43</b>		Both Victoria Reynolds and Nyla Pollard recorded a double-double as the Tribe cruised to a 20-point victory after previously unbeaten East Carolina.
	Nov. 30	at Hartford	L, 45-50	W&M couldn't overcome a cold shooting night as it shot just 22.2-percent (12-of-54) from the floor. Freshman Eva Hodgson led the team with a career-high 14 points.
	Dec. 2	at Fairfield	W, 60-54	The Tribe outscored the Stags 6-0 in the final moments to pick up its fourth win of the season. Senior Bianca Boggs scored a game-high 22 to pace the Tribe.
	<b>Dec. 5 RICHMOND</b>	<b>W, 65-55</b>		W&M never trailed as it picked up its third straight win against Richmond. Freshman Eva Hodgson (15 pts) and Harper Birdson (13 pts) both had career-highs.
	Dec. 8	at Old Dominion	L, 69-83	ODU snapped a three-game losing streak to the Tribe at home. Redshirt sophomore Harper Birdsong led the Tribe with a career-high 18 points.
	Dec. 21	at Norfolk State	W, 55-44	The Tribe used a strong defensive effort to gut out a 55-44 road win at Norfolk State following a 13-day lay-off. Sophomore Harper Birdsong had a game-high 14 points off of the bench.
	<b>DEC. 29 GEORGE WASHINGTON 2 PM</b> Video: TribeAthletics.TV			The Green and Gold plays host to defending A-10 champ George Washington for the first time since 2013. The all-time series is tied 10-10.
	Jan. 4	at Hofstra*	7 PM	W&M looks for just its second win in Hempstead as it opens CAA play on the road for the fourth time in the last five years. Last year, the two teams split the season series.
	Jan. 6	at Northeastern*	2 PM	The Tribe closes its two-game CAA opening road trip at Northeastern. The all-time series is tight at 11-10, but NU leads 8-3 in Boston.
	<b>JAN. 11 UNCW</b> Video: TribeAthletics.TV	<b>7 PM</b>		W&M will look to avenge last year's home loss to Newport News native Karen Barefoot and her Seahawks in the CAA home opener.
	<b>JAN. 13 CHARLESTON</b> Video: TribeAthletics.TV	<b>2 PM</b>		The Tribe hosts Charleston to close out its first home weekend. W&M has won the last two meetings against the Cougars, including a 79-66 victory in Kaplan Arena last year.
	<b>JAN. 20 ELON *</b> Video: TribeAthletics.TV	<b>2 PM</b>		In its lone game of the weekend, W&M hosts back-to-back CAA Champion Elon. The Tribe topped Elon 81-75 at Kaplan Arena last year.
	Jan. 25	at James Madison *	7 PM	W&M opens a two-game road trip as it travels to CAA preseason favorite James Madison. W&M won at the Convo in 2016-17, and lost a tough 70-64 game last year.
	Jan. 27	at Towson*	2 PM	The Tribe heads to SECU Arena looking for its third victory and its last four trips. W&M picked up a 75-63 victory in Maryland last season.
	<b>FEB. 1 DELAWARE*</b> Video: TribeAthletics.TV	<b>7 PM</b>		The Green and Gold opens February as it welcomes Delaware to Kaplan Arena. W&M is looking to snap a two-game skid against the Blue Hens.
	<b>FEB. 3 DREXEL*</b> Video: TribeAthletics.TV	<b>2 PM</b>		W&M plays on its 26th-consecutive Super Bowl Sunday as it welcomes Drexel for the Golden Game. The Tribe is 3-2 under Swanson on Super Sunday.
	Feb. 8	at Charleston*	12 PM	The Tribe opens a season-long three-game road swing with an afternoon game at Charleston. W&M is 3-2 at Charleston since the Cougars joined the league.
	Feb. 10	at UNCW*	2 PM	W&M heads to the Port City to close the weekend. The Tribe has won its last two games against UNCW at Trask Coliseum.
	Feb. 17	at Elon *	1 PM	The Tribe heads to the brand new Schar Center as it closes out the regular season with Elon. The Phoenix have topped W&M in the last two CAA Tournaments.
	<b>FEB. 22 TOWSON*</b> Video: TribeAthletics.TV	<b>7 PM</b>		Towson and W&M close the regular season in Williamsburg this year. The Tigers squeaked out a one-point victory in its last trip to Kaplan Arena.
	<b>FEB. 24 JAMES MADISON*</b> Video: TribeAthletics.TV	<b>2 PM</b>		W&M will raise breast cancer awareness as it welcomes James Madison to Kaplan Arena. The Dukes have won the last two meetings in Kaplan Arena.
	March 1	at Drexel*	7 PM	Drexel and W&M meet for the final time in the regular season when the Tribe travels to Philly. The Dragons are the defending CAA regular season champion.
	March 3	at Delaware*	2 PM	The Tribe heads to the site of the 2019 CAA Tournament when it travels to Delaware. W&M is 3-2 under Ed Swanson at Delaware during his tenure.
	<b>MARCH 7 NORTHEASTERN*</b> Video: TribeAthletics.TV	<b>7 PM</b>		The Green and Gold plays host to Northeastern in its penultimate regular season game. The Tribe has a seven-game winning streak against the Huskies in Williamsburg.
	<b>MARCH 9 HOFSTRA*</b> Video: TribeAthletics.TV	<b>2 PM</b>		W&M closes the regular season with the team it started CAA play against. The Tribe picked up a 63-53 victory over the Pride at Kaplan Arena last year.
	Mar. 13-16	CAA Championship		Delaware hosts the 2019 CAA Tournament at the Bob Carpenter Center in Newark, Del. The event runs from March 13-16.



GENERAL INFORMATION		LAST GAME STARTERS																																																																																																																							
<b>Name:</b> College of William & Mary <b>Location:</b> Williamsburg, Va. <b>Founded:</b> 1693 (2nd oldest college in U.S.) <b>Enrollment</b> (includes graduate): 8,617 <b>Nickname:</b> Tribe <b>Colors:</b> Green, Gold and Silver <b>Arena (capacity):</b> Kaplan Arena (8,600) <b>Affiliation:</b> NCAA Division I <b>Conference:</b> Colonial Athletic Association (CAA) <b>President:</b> Katherine A. Rowe (Carleton, 1984) <b>Chancellor:</b> Robert M. Gates (William & Mary, 1965) <b>Director of Athletics:</b> Samantha K. Huge (Gordon, 1992)		<div><div>2</div><div><b>BIANCA BOGGS</b> Sr. • G • 5-9 Waldorf, Md./St. Mary's Ryken</div></div> <table><tr><th>G-GS</th><th>PPG</th><th>RPG</th><th>APG</th><th>FG%</th><th>3P%</th><th>FT%</th><th>STL</th><th>BLK</th></tr><tr><td>10-10</td><td>15.1</td><td>6.4</td><td>4.2</td><td>.417</td><td>.243</td><td>.744</td><td>28</td><td>7</td></tr></table> <div><ul style="list-style-type: none"><li>Named team captain for the 2018-19 season.</li><li>Earned Preseason First-Team All-CAA honors this season.</li><li>Notched a double-double with 18 points and 10 rebounds at Davidson (11/24).</li><li>Scored a career-high 33 points in a win at St. Francis (12/2/17).</li><li>Ranks 18th in school history with 1,049 career points.</li></ul></div>										G-GS	PPG	RPG	APG	FG%	3P%	FT%	STL	BLK	10-10	15.1	6.4	4.2	.417	.243	.744	28	7																																																																																												
G-GS	PPG	RPG	APG	FG%	3P%	FT%	STL	BLK																																																																																																																	
10-10	15.1	6.4	4.2	.417	.243	.744	28	7																																																																																																																	
<b>WOMEN'S BASKETBALL INFORMATION</b> <b>Head Coach:</b> Ed Swanson (Sacred Heart, 1989) <b>Record at W&amp;M:</b> 80-81 (sixth season) <b>Career Record:</b> 486-345 (29th season) <b>Assistant Coach:</b> Lynne-Ann Kokoski (Bryant, 2008) <b>Assistant Coach:</b> Chanel Murchison (William & Mary, 2013) <b>Assistant Coach:</b> Tierra Rudd (Winston-Salem, 2008) <b>Dir. of Operations:</b> Michelle Kurowski (UMBC, 2011) <b>2017-18 Record (CAA):</b> 16-14 (7-11/6th) <b>Starters Returning/Lost:</b> 3/2 <b>Letterwinners Returning/Lost:</b> 10/4 <b>First Year of Basketball:</b> 1919-20 <b>All-Time Record:</b> 660-957-9 <b>WNIT Appearances:</b> None <b>NCAA Appearances:</b> None		<div><div>10</div><div><b>EVA HODGSON</b> Fr. • G • 5-9 Rindge, N.H./New Hampton School</div></div> <table><tr><th>G-GS</th><th>PPG</th><th>RPG</th><th>APG</th><th>FG%</th><th>3P%</th><th>FT%</th><th>STL</th><th>BLK</th></tr><tr><td>10-10</td><td>7.3</td><td>2.4</td><td>3.1</td><td>.391</td><td>.261</td><td>.680</td><td>15</td><td>2</td></tr></table> <div><ul style="list-style-type: none"><li>Named CAA Rookie of the Week for the week of Dec. 3.</li><li>Set career-highs against Richmond (12/5) in points (15) and assists (6).</li><li>Netted a then-career-high with 14 points at Hartford (11/30).</li><li>Scored a then-career-high 13 points in the win against East Carolina (11/27).</li><li>Her parents and two brothers all played Division III basketball.</li></ul></div>										G-GS	PPG	RPG	APG	FG%	3P%	FT%	STL	BLK	10-10	7.3	2.4	3.1	.391	.261	.680	15	2																																																																																												
G-GS	PPG	RPG	APG	FG%	3P%	FT%	STL	BLK																																																																																																																	
10-10	7.3	2.4	3.1	.391	.261	.680	15	2																																																																																																																	
		<div><div>11</div><div><b>NYLA POLLARD</b> So. • G • 5-9 Virginia Beach, Va./Princess Anne</div></div> <table><tr><th>G-GS</th><th>PPG</th><th>RPG</th><th>APG</th><th>FG%</th><th>3P%</th><th>FT%</th><th>STL</th><th>BLK</th></tr><tr><td>10-6</td><td>4.9</td><td>2.9</td><td>2.5</td><td>.308</td><td>.238</td><td>.667</td><td>12</td><td>1</td></tr></table> <div><ul style="list-style-type: none"><li>Should be a major contributor after being named to the CAA All-Rookie team last year.</li><li>Made her first start of the year &amp; had a double-double (10 pts, 12 reb) vs. ECU (11/27).</li><li>Tabbed back-to-back CAA Rookie of the Week for the week of Dec. 11 and Dec. 18.</li><li>Scored a career-high 14 points, four assists, three rebounds against Upstate (12/5/17).</li></ul></div>										G-GS	PPG	RPG	APG	FG%	3P%	FT%	STL	BLK	10-6	4.9	2.9	2.5	.308	.238	.667	12	1																																																																																												
G-GS	PPG	RPG	APG	FG%	3P%	FT%	STL	BLK																																																																																																																	
10-6	4.9	2.9	2.5	.308	.238	.667	12	1																																																																																																																	
		<div><div>25</div><div><b>GABBY ROGERS</b> So. • C • 6-1 Dallas, Texas/Bishop Lynch</div></div> <table><tr><th>G-GS</th><th>PPG</th><th>RPG</th><th>APG</th><th>FG%</th><th>3P%</th><th>FT%</th><th>STL</th><th>BLK</th></tr><tr><td>10-10</td><td>4.7</td><td>2.5</td><td>0.2</td><td>.488</td><td>.000</td><td>.833</td><td>6</td><td>2</td></tr></table> <div><ul style="list-style-type: none"><li>Center that has started all eight games this season for the Tribe.</li><li>Had eight points and tied a career-high with five rebounds in the win at Fairfield (12/2).</li><li>Scored a career-high 10 points and a steal at Davidson (11/24).</li><li>Notched a then-season-high eight points in the win at Loyola (11/17).</li><li>Made her first career start on opening night against VCU (11/6) scoring four points.</li></ul></div>										G-GS	PPG	RPG	APG	FG%	3P%	FT%	STL	BLK	10-10	4.7	2.5	0.2	.488	.000	.833	6	2																																																																																												
G-GS	PPG	RPG	APG	FG%	3P%	FT%	STL	BLK																																																																																																																	
10-10	4.7	2.5	0.2	.488	.000	.833	6	2																																																																																																																	
<b>TRIBE TRENDS</b> <b>WILLIAM &amp; MARY RECORD</b> Overall.....6-4 CAA Games.....0-0 Leads at halftime.....6-3 Trails at halftime.....0-0 Tied at Halftime.....0-1 Home.....3-1 Away.....3-3 Neutral.....0-0  <b>BY MONTH</b> November.....3-3 December.....3-1 January.....0-0 February.....0-0 March.....0-0  <b>SCORING...</b> W&M scores fewer than 40 pts.....0-0 W&M scores 40-49.....0-1 W&M scores 50-59.....1-1 W&M scores 60-69.....4-2 W&M scores 70-79.....0-0 W&M scores 80+.....1-0 Opp. scores fewer than 40 pts.....0-0 Opp. scores 40-49.....3-0 Opp. scores 50-59.....3-1 Opp. scores 60-69.....0-0 Opp. scores 70-79.....0-2 Opp. scores 80+.....0-1  <b>FROM THE FIELD ...</b> W&M shoots below 35%.....0-1 W&M shoots better than 35%.....6-3 W&M shoots better than 40%.....4-2 W&M shoots better than 45%.....2-1 W&M shoots better than 50%.....1-0  <b>FINAL MARGIN</b> 1-3 points.....0-0 4-7 points.....1-1 8-10 points.....1-0 11-15 points.....2-2 16+ points.....2-1 In Overtime.....0-0  <b>BATTLE OF THE BOARDS</b> Outrebounding opponent.....2-0 Outrebounded by opponent.....3-4 Rebounds are even.....1-0  <b>DOWN TO THE WIRE</b> Leading with 5:00 left.....5-0 Trailing with 5:00 left.....0-4 Tied with 5:00 left.....1-0  <b>LAYING IT ON THE LINE...</b> W&M attempts more free throws.....3-1 Opp. attempts more free throws.....3-3 Free Throws are even.....0-0  <b>JERSEY COLOR</b> White.....2-1 Green.....2-3 Gold.....2-0 Pink.....0-0  <b>STRENGTH OF OPPOSITION</b> vs. Top 25 teams.....0-0 vs. teams with a winning record.....2-1 vs. teams .500 record.....0-0 vs. teams with a losing record.....4-2  <b>STREAKING</b> Coming off of a win.....2-3 Coming off of a loss.....4-0 Longest Winning Streak.....W2 Longest Losing Streak.....L1 Current Streak.....W1		<b>RESERVES</b> <table><tr><th>POS. NO. NAME</th><th>HT.</th><th>CL.</th><th>G-GS</th><th>PPG</th><th>RPG</th><th>APG</th><th>FG%</th><th>3P%</th><th>FT%</th><th>MISC.</th></tr><tr><td>G 0 Libby Underwood</td><td>5-9</td><td>So.</td><td>8-0</td><td>1.1</td><td>0.1</td><td>0.1</td><td>.444</td><td>.000</td><td>.500</td><td>1 blk</td></tr></table> <p>NOTE: Scored six points in the second half of the game versus VCU (11/6).</p> <table><tr><td>G 1 Sydney Wagner</td><td>5-6</td><td>So.</td><td>-</td><td>-</td><td>-</td><td>-</td><td>-</td><td>-</td><td>-</td><td>-</td></tr></table> <p>NOTE: Transfer from Stetson that has to sit out the 2018-19 season due to NCAA Transfer Rule</p> <table><tr><td>G 3 Ashley Taylor</td><td>5-8</td><td>Jr.</td><td>2-0</td><td>0.0</td><td>0.0</td><td>0.0</td><td>.000</td><td>.000</td><td>-</td><td>-</td></tr></table> <p>NOTE: Has appeared in 22 career games in career.</p> <table><tr><td>G/F 5 Misha Jones</td><td>5-9</td><td>Jr.</td><td>10-0</td><td>2.8</td><td>1.8</td><td>1.1</td><td>.417</td><td>.313</td><td>.750</td><td>2 blk</td></tr></table> <p>NOTE: Team captain, who scored a career-high nine points against Howard (11/12).</p> <table><tr><td>G 12 Harper Birdsong</td><td>5-10</td><td>R-So.</td><td>10-4</td><td>10.5</td><td>1.3</td><td>1.2</td><td>.424</td><td>.417</td><td>.684</td><td>7 stl</td></tr></table> <p>NOTE: Been in double-figures in five of the last six, including a career-high 18 at ODU (12/5).</p> <table><tr><td>F 15 Emma Krause</td><td>6-2</td><td>Fr.</td><td>10-0</td><td>5.4</td><td>3.0</td><td>0.9</td><td>.360</td><td>.361</td><td>.500</td><td>12 stl</td></tr></table> <p>NOTE: Named CAA Rookie of the Week (12/24); Career-high 14 points against Howard (11/12).</p> <table><tr><td>C 20 Chandler Smith</td><td>6-3</td><td>Sr.</td><td>6-0</td><td>0.2</td><td>1.3</td><td>0.2</td><td>.000</td><td>-</td><td>.500</td><td>2 blk</td></tr></table> <p>NOTE: Named a team captain for 18-19; Reserve post that has appeared in 58 career games.</p> <table><tr><td>G/F 21 Bailey Eichner</td><td>6-1</td><td>Fr.</td><td>5-0</td><td>0.6</td><td>1.8</td><td>0.0</td><td>.167</td><td>.000</td><td>.500</td><td>3 stl</td></tr></table> <p>NOTE: Had a career-high six rebounds at ODU (12/5)</p> <table><tr><td>C 32 Caroline Stover</td><td>6-3</td><td>Fr.</td><td>1-0</td><td>0.0</td><td>0.0</td><td>0.0</td><td>.000</td><td>.000</td><td>.000</td><td>-</td></tr></table> <p>NOTE: Ranked as the No. 131 recruit in her class on BlueStar</p>										POS. NO. NAME	HT.	CL.	G-GS	PPG	RPG	APG	FG%	3P%	FT%	MISC.	G 0 Libby Underwood	5-9	So.	8-0	1.1	0.1	0.1	.444	.000	.500	1 blk	G 1 Sydney Wagner	5-6	So.	-	-	-	-	-	-	-	-	G 3 Ashley Taylor	5-8	Jr.	2-0	0.0	0.0	0.0	.000	.000	-	-	G/F 5 Misha Jones	5-9	Jr.	10-0	2.8	1.8	1.1	.417	.313	.750	2 blk	G 12 Harper Birdsong	5-10	R-So.	10-4	10.5	1.3	1.2	.424	.417	.684	7 stl	F 15 Emma Krause	6-2	Fr.	10-0	5.4	3.0	0.9	.360	.361	.500	12 stl	C 20 Chandler Smith	6-3	Sr.	6-0	0.2	1.3	0.2	.000	-	.500	2 blk	G/F 21 Bailey Eichner	6-1	Fr.	5-0	0.6	1.8	0.0	.167	.000	.500	3 stl	C 32 Caroline Stover	6-3	Fr.	1-0	0.0	0.0	0.0	.000	.000	.000	-
POS. NO. NAME	HT.	CL.	G-GS	PPG	RPG	APG	FG%	3P%	FT%	MISC.																																																																																																															
G 0 Libby Underwood	5-9	So.	8-0	1.1	0.1	0.1	.444	.000	.500	1 blk																																																																																																															
G 1 Sydney Wagner	5-6	So.	-	-	-	-	-	-	-	-																																																																																																															
G 3 Ashley Taylor	5-8	Jr.	2-0	0.0	0.0	0.0	.000	.000	-	-																																																																																																															
G/F 5 Misha Jones	5-9	Jr.	10-0	2.8	1.8	1.1	.417	.313	.750	2 blk																																																																																																															
G 12 Harper Birdsong	5-10	R-So.	10-4	10.5	1.3	1.2	.424	.417	.684	7 stl																																																																																																															
F 15 Emma Krause	6-2	Fr.	10-0	5.4	3.0	0.9	.360	.361	.500	12 stl																																																																																																															
C 20 Chandler Smith	6-3	Sr.	6-0	0.2	1.3	0.2	.000	-	.500	2 blk																																																																																																															
G/F 21 Bailey Eichner	6-1	Fr.	5-0	0.6	1.8	0.0	.167	.000	.500	3 stl																																																																																																															
C 32 Caroline Stover	6-3	Fr.	1-0	0.0	0.0	0.0	.000	.000	.000	-																																																																																																															
		<b>W&amp;M INDIVIDUAL SUPERLATIVES</b> <table><tr><th>Double-Digt Games</th><th>16-17</th><th>17-18</th><th>18-19</th><th>Career</th></tr><tr><td>Bianca Boggs</td><td>8</td><td>25</td><td>8</td><td>50</td></tr><tr><td>Victoria Reynolds</td><td>4</td><td>15</td><td>8</td><td>27</td></tr><tr><td>Harper Birdsong</td><td>-</td><td>-</td><td>7</td><td>7</td></tr><tr><td>Nyla Pollard</td><td>-</td><td>3</td><td>1</td><td>4</td></tr><tr><td>Eva Hodgson</td><td>-</td><td>-</td><td>3</td><td>3</td></tr><tr><td>Emma Krause</td><td>-</td><td>-</td><td>1</td><td>1</td></tr><tr><td>Gabby Rogers</td><td>-</td><td>-</td><td>1</td><td>1</td></tr></table> <table><tr><th>10-Assist Games</th><th>16-17</th><th>17-18</th><th>18-19</th><th>Career</th></tr><tr><td>Bianca Boggs</td><td>-</td><td>1</td><td>1</td><td>3</td></tr><tr><td>Victoria Reynolds</td><td>-</td><td>1</td><td>1</td><td>2</td></tr><tr><td>Nyla Pollard</td><td>-</td><td>-</td><td>1</td><td>1</td></tr></table> <p><b>Leading Scorer (times):</b> - Boggs (5), Birdsong (2), Hodgson (2), Reynolds (1)</p> <p><b>Leading Rebounder (times):</b> - Reynolds (6), Boggs (4), Hodgson (1), Eichner (1), Rogers (1)</p> <p><b>Leading Assists (times):</b> - Boggs (6), Hodgson (4), Pollard (2), Birdsong (1), Jones (1), Reynolds (1)</p> <p><b>Charges (times):</b> - Jones (6), Rogers (4), Hodgson (2), Birdsong (1), Eichner (2)</p> <p><b>Three-Point Plays (Made/Attempted):</b> - Birdsong (1/1), Jones (1/1), Reynolds (1/1), Boggs (9/10), Pollard (0/2)</p> <p><b>Four-Point Plays (Made/Attempted):</b> - Jones (1/1)</p>										Double-Digt Games	16-17	17-18	18-19	Career	Bianca Boggs	8	25	8	50	Victoria Reynolds	4	15	8	27	Harper Birdsong	-	-	7	7	Nyla Pollard	-	3	1	4	Eva Hodgson	-	-	3	3	Emma Krause	-	-	1	1	Gabby Rogers	-	-	1	1	10-Assist Games	16-17	17-18	18-19	Career	Bianca Boggs	-	1	1	3	Victoria Reynolds	-	1	1	2	Nyla Pollard	-	-	1	1																																																		
Double-Digt Games	16-17	17-18	18-19	Career																																																																																																																					
Bianca Boggs	8	25	8	50																																																																																																																					
Victoria Reynolds	4	15	8	27																																																																																																																					
Harper Birdsong	-	-	7	7																																																																																																																					
Nyla Pollard	-	3	1	4																																																																																																																					
Eva Hodgson	-	-	3	3																																																																																																																					
Emma Krause	-	-	1	1																																																																																																																					
Gabby Rogers	-	-	1	1																																																																																																																					
10-Assist Games	16-17	17-18	18-19	Career																																																																																																																					
Bianca Boggs	-	1	1	3																																																																																																																					
Victoria Reynolds	-	1	1	2																																																																																																																					
Nyla Pollard	-	-	1	1																																																																																																																					



Team

<b>W&amp;M scored 80+ points</b>	<b>11/12/2018</b>	<b>88 (88-75, W vs. Howard)</b>
<b>W&amp;M scored 85+ points</b>	<b>11/12/2018</b>	<b>88 (88-75, W vs. Howard)</b>
W&M scored 90+ points	12/2/2017	92 (92-86, W at St. Francis (Pa.))
W&M scored 95+ points	2/16/2014	97 (97-44 W, vs. UNCW)
<b>Opponent scored 80+</b>	<b>12/8/2018</b>	<b>83 (69-83 L, at Old Dominion)</b>
Opponent scored 85+	2/2/2017	86 (41-86, L vs. James Madison)
Opponent scored 90+	11/17/2017	92 (92-81 L, at St. John's)
<b>W&amp;M grabbed 50+ rebounds</b>	<b>11/27/2018</b>	<b>58 (63-43 W, vs. East Carolina)</b>
W&M grabbed 60+ rebounds	12/21/2006	60 (73-58 W, at Norfolk State)
<b>Held an Opponent to 50 pts. or less</b>	<b>12/21/2018</b>	<b>44 (55-44, W at Norfolk State)</b>
Held an Opponent to 40 pts. or less	12/3/2016	39 (67-39, W vs. Richmond)
<b>W&amp;M was held under 50 pts.</b>	<b>11/30/2018</b>	<b>45 (45-50 L, at Hartford)</b>
<b>Shot 50% from the field</b>	<b>11/17/2018</b>	<b>51.0% (26-for-51) (65-49, W at Loyola)</b>
<b>Shot 80-89% from the foul line (8 or more attempts)</b>	<b>12/8/2018</b>	<b>82.4% (14-for-17) (69-83, L at Old Dominion)</b>
Shot 90-99% from the foul line (8 or more attempts)	2/9/2018	90.0 (9-for-10) (59-68, L at Delaware)
Shot 100% from the foul line (8 or more attempts)	2/28/2016	100.0% (8-8) (53-69, L at Drexel)
<b>Had a 20-pt. win</b>	<b>11/27/2018</b>	<b>20 (63-43 W, vs. East Carolina)</b>
Had a 30-pt. win	11/28/2016	34 (W, 82-48 vs. Delaware State)
Had a 40-pt. win	2/16/2014	53 (97-44 W, vs. UNCW)
Had a 50-pt. win	2/16/2014	53 (97-44 W, vs. UNCW)
Had a 20-pt. loss	3/1/2018	21 (L, 61-82 at Elon)
Had a 30-pt. loss	2/2/2018	45 (L, 41-86 vs. James Madison)
An overtime win	11/21/2017	71-65, W at East Carolina
An overtime loss	1/9/2018	58-65, L vs. Drexel
A double-overtime game	2/6/2015	72-68, W at Drexel
A triple-overtime game	11/29/1999	77-83, L at VCU
10-game winning streak	2016-17	11 (11/18/2016-1/6/17)
5-game winning streak	2017-18	7 (11/21/2017-12/21/2017)
5-game losing streak	2017-18	7 (2/16/2018-11/12/2018)
10-game losing streak	2012-13	11 (11/25/2012-1/20/2013)

Individual

<b>20-24 pts.</b>	<b>22, Bianca Boggs at Fairfield, 12/2/18</b>
<b>25-29 pts.</b>	<b>26, Bianca Boggs vs. Howard, 11/12/18</b>
30-34 pts.	33, Bianca Boggs at St. Francis (Pa.), 12/2/17
35-39 pts.	39, Lynn Norenberg at Virginia Wesleyan, 11/15/80
40+ pts.	53, Bebe Fisher vs. Norfolk Division, 2/13/52
5 players in double figures	Bianca Boggs (26), Victoria Reynolds (15), Abby Rendle (12), Nari Garner (11), Jenna Green (10) vs. College of Charleston, 1/26/18
Two players with 20 pts. or more	Jenna Green (22) and Bianca Boggs (21) at Towson, 2/4/18
<b>Player with 10-14 rebounds</b>	<b>12, Nyla Pollard &amp; 11, Bianca Boggs vs. East Carolina, 11/27/18</b>
<b>Player with 15-19 rebounds</b>	<b>15, Victoria Reynolds vs. East Carolina, 11/27/18</b>
Player with 20 or more rebounds	21, Emily Correal vs. George Mason, 3/16/13
<b>Two players with 10 or more rebounds</b>	<b>15, Victoria Reynolds, 12, Nyla Pollard, &amp; 11 Bianca Boggs vs. ECU, 11/27/18</b>
A player with a triple-double	Abby Rendle (25 pts, 17 reb, 10 blks) at East Carolina, 11/21/17
<b>A player with a double-double</b>	<b>Victoria Reynolds (15 pts, 15 reb) &amp; Nyla Pollard (10 pts, 12 reb.) vs. ECU, 11/27/18</b>
<b>Two players with double-doubles</b>	<b>Victoria Reynolds (15 pts, 15 reb) &amp; Nyla Pollard (10 pts, 12 reb.) vs. ECU, 11/27/18</b>
100% from the field (min. 5 made)	7-for-7, Abby Rendle vs. Drexel, 3/1/17
<b>100% from foul line (min. 5 made)</b>	<b>6-for-6, Victoria Reynolds vs. East Carolina, 11/27/18</b>
<b>5-7 Assists</b>	<b>6, Eva Hodgson &amp; Bianca Boggs vs. Richmond, 12/5/18</b>
8-9 Assists	8, Bianca Boggs at Delaware, 2/9/18
10+ Assists	11, Jenna Green vs. College of Charleston, 1/26/18
<b>5 or more steals</b>	<b>6, Bianca Boggs at Hartford, 11/30/18</b>
5-9 blocks	6, Abby Rendle at Delaware, 2/9/18
10+ blocks	11, Abby Rendle vs. College of Charleston, 1/26/18

BOLD - Happened in the 2018-19 season

**LIBBY UNDERWOOD**

So. • Guard • 5-9  
Rye, New Hampshire

**SYDNEY WAGNER**

So. • Guard • 5-6  
Phoenixville, Pa.

**BIANCA BOGGS**

Sr. • Guard • 5-5  
Waldorf, Md.

**ASHLEY TAYLOR**

Jr. • Guard • 6-0  
Charlottesville, Va.

**MISHA JONES**

Sr. • Guard/Forward • 5-9  
Manassas Park, Va.

**EVA HODGSON**

Fr. • Guard • 5-9  
Rindge, New Hampshire

**NYLA POLLARD**

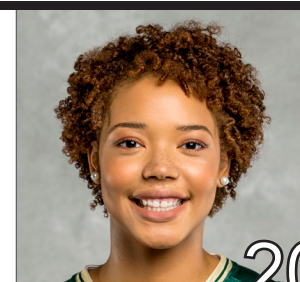
So. • Guard • 5-9  
Virginia Beach, Va.

**HARPER BIRDSONG**

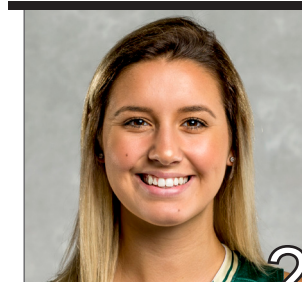
R-So. • Guard • 5-10  
Suffolk, Va.

**EMMA KRUSE**

Jr. • Center • 6-3  
Port Tobacco, Md.

**CHANDLER SMITH**

Sr. • Center • 6-3  
Port Tobacco, Md.

**BAILEY EICHNER**

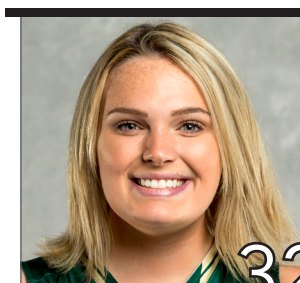
So. • Guard/Forward • 6-1  
Cudahy, Wisc.

**GABBY ROGERS**

Fr. • Center • 6-1  
Dallas, Texas

**VICTORIA REYNOLDS**

Jr. • Forward • 5-10  
Fairfax, Va.

**CAROLINE STOVER**

Fr. • Center • 6-3  
Plymton Mass.

**ED SWANSON**

Sixth Season at W&M  
29th Overall

**PRONUNCIATION GUIDE**

Bailey **EICHNER**    IKE-ner

Lynne **KOKOSKI**    Kah-kaw-ski

**CHANEL** Murchison    Shh-nell





ED

SWANSON

## HEAD COACH

29<sup>TH</sup> SEASON OVERALL6<sup>TH</sup> SEASON AT W&M

## PROFILE

Wife: Marion

Children: Connor and Matthew

## Education

Sacred Heart, 1989

## Coaching Career

Sacred Heart (1989-13)

William &amp; Mary (2013-P)

## CAREER HIGHLIGHTS

- Three NCAA Tournament Appearances
- Led W&M to 1st Division I Postseason berth in the WBI.
- Led W&M to a school record 20 wins in 2016-17
- 2016-17 VaSID Coach of the Year
- Six Postseason Appearances
- Four regular season conference championships and three postseason league titles
- 2009 New England Hall of Fame Inductee
- Eight 20-win seasons
- Five-time Conference Coach of the Year
- On five occasions, his teams have earned to the WBCA Academic Top 25 Team Honor

Ed Swanson enters his sixth season with the Green and Gold. He became the fifth Division I head women's basketball coach in William and Mary history on May 7, 2013. Prior to coming to Williamsburg, he spent 23 years transforming Sacred Heart University from a Division II program into one of the top teams in the Northeast Conference. Swanson owns a career record of 464-327 (.587).

The success continued for the Tribe during the 2017-18 season. W&M won 16 games, which is tied for the fourth most in school history, and posted its second straight winning season for the first time since 2005-06 and 2006-07. His first recruiting class became the winningest class in school history with the team's victory over College of Charleston on Jan. 26. The seniors went onto win 66 games during their four year career. The Tribe raced out to an 11-2 start for the third straight season, which equaled the best 13-game start in school history, and led the CAA in blocked shots (218) and blocked shots per game (7.3), which ranked fourth and third in the NCAA, respectively. Both numbers are single-season school records. Individually, he mentored three players to five All-CAA awards, including All-CAA First-Team selection Bianca Boggs, who became the first Tribe player in a decade to be named to the league's first-team. Additionally, Boggs was named to the league's all-defensive team, while Abby Rendle claimed a spot on the All-CAA Third-Team, and All-Defensive Team, and freshman Nyla Pollard was picked to the CAA All-Rookie team.

Swanson led the Tribe to one of its best seasons in program history in 2016-17. The Tribe tied a school record with 20 wins, while winning a CAA Tournament game for the first time since 2009, and advancing to the CAA Semifinals for the first-time since 2001. Under his leadership, the Tribe won 11-straight games, which is the longest single-season streak in school history, from Nov. 18, 2016-Jan. 2, 2017. W&M had four players claim seven all-conference awards this season, including seniors Alexandra Masaquel and Marlena Tremba, who each earned second-team citations. Additionally, Masaquel was tabbed the Richmond Times-Dispatch All-State Second-Team, while Tremba earned VaSID All-State Second-Team honors. For his efforts, VaSID honored him as the Virginia State Coach of the Year.

Once again Swanson's third season was one for the record books. The Tribe raced out to its best start in school history with an 11-2 record. W&M went onto again to win the fourth most wins in school history with 15. For the second straight season the Tribe broke the blocks and assist record, by tying the single season assist record (466) and broke the school record for blocks with 148. During the season junior Marlena Tremba became the 15th player in school history to break the 1000-point barrier. Individually, four players earned All-CAA awards as junior Alexandra Masaquel was tabbed to the second-team and all-defensive team, Tremba earned third-team honors, and freshman Bianca Boggs picked up a spot on the all-rookie team. The Tribe was also rewarded for its hard work in the classroom as Masaquel, Tremba, and sophomore Jenna Green earned all-academic team honors.

Swanson's second year with the Green and Gold was one for the record books. The Tribe racked up 15 wins, the fourth-most in school history, on its way to its first-ever postseason appearances with bid in the Women's Basketball Invitational. The Green and Gold had a seven-win turnaround, while setting three school records for assists (466), blocked shots, (143), blocked shots per game (4.5). Individually he helped lead four players to five All-CAA awards. Sophomore Marlena Tremba was named to the All-CAA Third-Team, senior Jazmen Boone was named to the All-Defensive Team, freshman Abby Rendle to the All-Rookie and All-Defensive team, and senior Kyla Kerstetter earned all-academic honors.

In his first season with the Tribe, Swanson led a young team to eight victories in a seven-seed in the CAA Tournament. The Green and Gold finished in the top 10 nationally in steals per game, while Jazmen Boone also ranked in the top 20 in the NCAA in the same category. Under his guidance Kaitlyn Mathieu garnered Third-Team All-Colonial Athletic Association honors, and went on to sign a professional contract with a team in Germany. In addition, guard Marlena Tremba went onto win CAA Rookie of the Year, and was named to the all-rookie squad. Boone was named to the all-defensive team, while she and Kyla Kerstetter took home all-academic honors.

Swanson oversaw Sacred Heart's transition from Division II to Division I in 1999-00, and the program took off under his direction. Over Sacred Heart's 14 years in Division I, Swanson led SHU



to a 280-145 record (.664), including a 190-62 (.754) record in the NEC. He departed as the NEC's all-time winningest head coach with all of his SHU teams finishing third or higher in the league standings. Swanson-lead teams have posted 13 straight winning seasons and 12 straight campaigns with 18 or more victories, including six with 20 or more wins. In 2009, he was inducted into the New England Basketball Hall of Fame.

In total, Swanson-coached players earned 19 All-NEC honors, including nine first-team awards, nine NEC All-Tournament Team honors, eight NEC All-Rookie Team selections, four NEC Rookies of the Year, three NEC Tournament MVPs and three NEC Players of the Year.

His teams have also enjoyed success in the classroom. On five occasions, the Pioneers were selected to the Women's Basketball Coaches Association (WBCA) Academic Top 25 Team Honor Roll, which has recognized outstanding academic performances from the top teams in each of the five collegiate divisions since 1995-96. On eight occasions since 2003, one of his players was a CoSIDA Academic All-District selection and two Pioneer players were named NEC Scholar-Athlete of the Year.

In 2012-13, Swanson led Sacred Heart to its third straight postseason appearance, and in the process, recorded his 400th career victory. His milestone win came on Feb. 12, 2013 as the Pioneers defeated Fairleigh Dickinson. SHU completed the season at 22-11, finishing second in the NEC with a 13-5 ledger and garnering a berth in the program's first Women's National Invitational Tournament (WNIT).

Sacred Heart claimed its third NEC Championship and advanced to the NCAA Tournament in 2011-12. The Pioneers also ranked 23rd nationally in the WBCA Academic Top 25 Team Honor Roll with a team GPA of 3.35. SHU compiled a season mark to 25-8, winning both the regular season and postseason crowns in the league as Swanson was named NEC Coach of the Year for the fourth time.

The Pioneers earned a berth in the 2011 Women's Basketball Invitational and finished the year at 18-13 with a 12-6 mark in the NEC. After a 0-5 start to the 2008-09 season, Swanson's Pioneers reeled off a 21-game winning streak, the longest in school history and second longest in the country, before finishing with 25-8 record. SHU completed the NEC regular season with a perfect 18-0 mark, becoming just the third team in the history of the conference to accomplish the feat. Swanson earned NEC Coach of the Year honors as Sacred Heart finished off an amazing season by capturing its second league title and trip to the NCAA Tournament over a four-year span. During the 2008-09 season, Swanson moved past former Mount St. Mary's head coach Bill Sheahan (124) as all-time leader in Northeast Conference wins and eclipsing the 300-win plateau in his career.

The 2005-06 season saw Swanson lead the Sacred Heart program to its first NCAA Tournament, capturing the NEC Championship in just its seventh season at the Division I level. Swanson guided the Pioneers to a school record 26-5 record, including a 16-2 NEC ledger. He also garnered career victory No. 250 during the season.

Under his leadership, Sacred Heart was one of the toughest teams on its home court, the William H. Pitt Center, which opened in 1997. During the Pitt Center's opening 16 seasons, Swanson's teams won 81.9 percent (185-41) of its home games. In 2011-12, SHU went 15-1 at home, a season bested only by a perfect 15-0 in 2005-06 and 14-0 in 2003-04. During the stretch, the Pioneers' home winning percentage at the Pitt Center ranked among the best nationally.

After directing the Pioneers to a 20-7 record — the program's first 20-win season — in 1995-96, Swanson was voted Coach of the Year in the New England Collegiate Conference (NECC) and the Women's Basketball Coaches Association's (WBCA) District I.

Swanson took the reins of the Sacred Heart University women's basketball program in 1990 and built the Pioneers into one of the top teams in the Northeast. He joined Dave Bike's men's basketball coaching staff at SHU in 1989, and, after becoming head coach of the Pioneer women's program in 1990, did double duty for three seasons before becoming the University's first full-time women's coach in 1993. Prior to Swanson's arrival,

## CAREER RECORD

YEAR	OVERALL RECORD	CONF. RECORD	CONF. FINISH	POST SEASON
1990-91	8-19	3-11	7th	
1991-92	11-16	5-9	T5th	
1992-93	16-13	7-7	4th	
1993-94	12-15	8-8	5th	
1994-95	11-16	7-9	5th	
1995-96	20-7	16-4	T2nd	
1996-97	14-14	10-8	5th	
1997-98	19-7	13-3	2nd	
1998-99	15-12	12-6	3rd	
1999-00	14-14	11-7	T3rd	
2000-01	15-14	11-7	T3rd	
2001-02	18-11	13-5	T2nd	
2002-03	18-10	12-6	T3rd	
2003-04	21-8	14-4	2nd	
2004-05	18-11	14-4	2nd	
2005-06	26-5	16-2	1st	NCAA
2006-07	22-10	15-3	T1st	
2007-08	19-11	14-4	3rd	
2008-09	25-8	18-0	1st	NCAA
2009-10	19-11	14-4	3rd	
2010-11	18-13	12-6	T3rd	WBI
2011-12	25-8	15-3	1st	NCAA
2012-13	22-11	13-5	2nd	WNIT
2013-14	8-21	5-11	8th	
2014-15	15-16	9-9	6th	WBI
2015-16	15-15	6-12	7th	
2016-17	20-11	9-9	4th	
2017-18	16-14	7-11	6th	
2018-19	6-4	0-0		
Career	486-345 (.585)	292-179 (.620)		
Division I	360-226 (.614)	227-114 (.666)		
W&M/CAA	80-81 (.497)	36-52 (.409)		

the Sacred Heart women's team compiled a 4-21 record. Under his guidance, the climb to Division II respectability was accomplished within three seasons, from 8-19 to 11-16 and, in 1992-93, to 16-13 — the program's first winning record in 11 seasons.

In his time at SHU, he was a four-time NEC Coach of the Year, led Sacred Heart to five postseason bids, including three NCAA Tournament appearances. Swanson guided the Pioneers to four NEC regular season crowns and three NEC tournament championships. SHU posted 20-win seasons seven times during his tenure, including five of the last eight years.

He earned a bachelor's degree in business from Sacred Heart in 1989. Also during his tenure at SHU, Swanson served as the moderator for the Pioneer Student-Athlete Council from 1998-01 and was the annual coordinator of commencement exercises since 2000. Swanson and his wife, Marion, have two sons, Connor and Matthew.



# #0 LIBBY UNDERWOOD

## SOPHOMORE - GUARD

### RYE, N.H. - PORTSMOUTH

#### >> UNDERWOOD'S CAREER HIGHS

##### MINUTES

Season	13	vs. VCU, 11/6/18
Career	15	vs. USC Upstate, 12/5/17

##### POINTS

Season	6	vs. VCU, 11/6/18
Career	8	vs. USC Upstate, 12/5/17

##### REBOUNDS

Season	1	vs. Howard, 11/12/18
Career	3	at Northeastern, 1/21/18

##### FIELD GOALS

Season	3	vs. VCU, 11/6/18
Career	3	vs. VCU, 11/6/18

##### 3-POINT FIELD GOALS

Season	-	-
Career	1	(3x) last time vs. Upstate 12/5/17

##### FREE THROWS

Season	1	at Old Dominion, 12/8/18
Career	5	vs. USC Upstate, 12/5/17

##### ASSISTS

Season	1	vs. VCU, 11/6/18
Career	3	vs. USC Upstate, 12/5/17

##### STEALS

Season	1	at Old Dominion, 12/8/18
Career	1	(3x) last time at ODU, 12/8/18

##### BLOCKS

Season	1	vs. VCU, 11/6/18
Career	1	vs. VCU, 11/6/18

##### MISCELLANEOUS

Career in Double Figures	0
2018-19 in Double Figures	0

#### >> 2018-19 GAME-BY-GAME

Opp	Date	GS	Min	FG-A	3FG-A	FT-A	Reb.	A	TO	BLK	STL	Pts
VCU	11/6		14	3-4	0-1	0-0	0	1	1	0	1	6
HOW	11/12		2	0-1	0-0	0-0	1	0	0	0	0	0
at Loy	11/17		11	0-1	0-0	0-0	0	0	0	0	0	0
at DC	11/24		6	0-1	0-1	0-0	0	0	0	0	0	0
ECU	11/27											
DID NOT PLAY - COACH'S DECISION												
at Hart	11/30		2	0-0	0-0	0-0	0	0	0	0	0	0
at Fair	12/2											
DID NOT PLAY - COACH'S DECISION												
UOFER	12/5		1	1-1	0-0	0-0	0	0	0	0	0	2
at ODU	12/8		10	0-1	0-0	1-2	0	0	2	0	1	1
at NSU	12/21		5	0-0	0-0	0-0	0	0	2	0	0	0

#### >> UNDERWOOD'S CAREER STATISTICS

Season	GP	GS	Min/Avg	FG-FGA	Pct	3pt-Att	Pct	FT-FTA	Pct	Off	Def	Reb	Avg	PF	FO	A	TO	Blk	S	TP	Avg
2017-18	27	0	162/6.0	6-30	.200	3-15	.200	14-22	.636	2	14	16	0.6	10	0	8	21	0	2	29	1.1
2018-19	8	0	49/6.1	4-9	.444	0-2	.000	1-2	.500	1	0	1	0.1	1	0	1	5	1	1	9	1.1
CAREER	35	0	211/6.0	10-39	.256	3-17	.176	15-24	.625	3	14	17	0.5	11	0	9	26	1	3	38	1.1



# #2 BIANCA BOGGS

## SENIOR - GUARD

### WALDORF, MD. - ST. MARY'S RYKEN

#### >> 2018-19 GAME-BY-GAME

Opp	Date	GS	Min	FG-A	3FG-A	FT-A	Reb.	A	TO	BLK	STL	Pts
VCU	11/6	*	34	6-16	1-3	2-3	6	4	3	1	5	16
HOW	11/12	*	35	10-22	1-5	5-5	9	7	4	0	1	26
at Loy	11/17	*	35	5-9	2-4	2-2	5	3	1	0	0	14
at DC	11/24	*	36	6-12	1-3	5-5	10	7	9	2	3	18
ECU	11/27	*	37	4-11	0-3	1-2	11	5	6	1	1	9
at Hart	11/30	*	39	3-15	1-5	5-6	6	2	4	0	6	12
at Fair	12/2	*	37	8-12	2-4	4-8	5	2	7	0	3	22
UOFER	12/5	*	32	2-7	0-0	1-2	1	6	3	2	2	8
at ODU	12/8	*	24	7-15	0-3	3-3	3	2	2	0	3	17
at NSU	12/21	*	33	4-10	0-2	2-5	8	4	6	1	4	10

#### >> BOGGS' CAREER HIGHS

##### MINUTES

Season	39	at Hartford, 11/30/18
Career	41	at East Carolina, 11/21/17

##### POINTS

Season	26	vs. Howard, 11/12/18
Career	33	at St. Francis (Pa.), 12/2/17

##### REBOUNDS

Season	11	vs. East Carolina, 11/27/18
Career	11	(2x) last time at ECU, 11/27/18

##### FIELD GOALS

Season	10	vs. Howard, 11/12/18
Career	12	at St. Francis (Pa.), 12/2/17

##### 3-POINT FIELD GOALS

Season	2	(2x) last time at Fair., 12/2/18
Career	4	(2x) last time vs. NU, 2/11/18

##### FREE THROWS

Season	5	(3x) last time at Hart., 11/30/18
Career	8	(2x) last time vs. UD, 2/23/18

##### ASSISTS

Season	7	(2x) last time at DC, 11/24/18
Career	8	at Delaware, 2/9/18

##### STEALS

Season	6	at Hartford, 11/30/18
Career	7	vs. Charleston, 1/26/18

##### BLOCKS

Season	2	(2x) last time at UofR, 12/5/18
Career	4	vs. Hofstra, 1/28/18

##### MISCELLANEOUS

Career in Double Figures	49
2018-19 in Double Figures	7

#### >> BOGGS' CAREER STATISTICS

Season	GP	GS	Min/Avg	FG-FGA	Pct	3pt-Att	Pct	FT-FTA	Pct	Off	Def	Reb	Avg	PF	FO	A	TO	Blk	S	TP	Avg
2015-16	30	24	802/26.7	68-233	.292	17-56	.304	70-102	.686	38	57	95	3.2	81	5	45	55	10	56	223	7.4
2016-17	31	26	734/23.7	82-214	.383	22-74	.297	60-76	.789	44	65	109	3.5	60	0	60	76	17	54	246	7.9
2017-18	30	30	907/30.2	156-373	.418	41-129	.318	103-139	.741	46	91	137	4.6	85	1	88	111	24	65	456	15.2
2018-19	10	10	343/34.3	55-132	.417	9-37	.243	32-43	.744	10	54	64	6.4	21	0	42	45	7	28	151	15.1
CAREER	101	90	278/27.6	361-952	.379	89-296	.301	265-360	.736	138	267	405	4.0	247	6	235	287	58	203	1076	10.7







# #10 EVA HODGSON

## FRESHMAN - GUARD

RINDGE, N.H. - NEW HAMPTON SCHOOL

### >> HODGSON'S CAREER HIGHS

#### MINUTES

Season	35	vs. Howard, 11/12/18
Career	35	vs. VCU, 11/6/18

#### POINTS

Season	15	vs. Richmond, 12/5/18
Career	15	vs. Richmond, 12/5/18

#### REBOUNDS

Season	5	(2x) last time at Fair., 12/2/18
Career	5	(2x) last time at Fair., 12/2/18

#### FIELD GOALS

Season	5	vs. Richmond, 12/5/18
Career	5	vs. Richmond, 12/5/18

#### 3-POINT FIELD GOALS

Season	2	vs. East Carolina, 11/27/18
Career	2	vs. East Carolina, 11/27/18

#### FREE THROWS

Season	5	at Hartford, 11/30/18
Career	5	at Hartford, 11/30/18

#### ASSISTS

Season	6	vs. Richmond, 12/5/18
Career	6	vs. Richmond, 12/5/18

#### STEALS

Season	4	at Fairfield, 12/2/18
Career	4	at Fairfield, 12/2/18

#### BLOCKS

Season	1	(2x) last time vs. UofR, 12/5/18
Career	1	(2x) last time vs. UofR, 12/5/18

#### MISCELLANEOUS

Career in Double Figures	3
2018-19 in Double Figures	3

### > 2018-19 GAME-BY-GAME

Opp	Date	GS	Min	FG-A	3FG-A	FT-A	Reb.	A	TO	BLK	STL	Pts
VCU	11/6 *	28	4-8	0-2	0-0	0	3	2	0	2	8	
HOW	11/12 *	35	2-6	1-3	1-2	5	4	4	0	2	6	
at Loy	11/17 *	30	2-7	0-1	1-1	2	5	2	1	1	5	
at DC	11/24 *	30	0-4	0-1	0-0	3	2	4	0	0	0	
ECU	11/27 *	26	4-4	2-2	3-4	1	0	2	1	0	13	
at Hart	11/30 *	34	4-12	1-5	5-7	2	2	4	0	3	14	
at Fair	12/2 *	32	0-4	0-2	3-4	5	4	4	0	4	3	
UOFR	12/5 *	32	5-11	1-4	4-4	4	6	3	1	2	15	
at ODU	12/8 *	22	2-5	0-2	0-2	1	3	1	0	0	4	
at NSU	12/21 *	14	2-3	1-1	0-0	1	2	2	0	0	5	

### >> HODGSON'S CAREER STATISTICS

Season	GP	GS	Min/Avg	FG-FGA	Pct	3pt-Att	Pct	FT-FTA	Pct	Off	Def	Reb	Avg	PF	FO	A	TO	Blk	S	TP	Avg
2018-19	10	10	282/28.2	25-64	.391	6-23	.261	17-25	.680	6	18	24	2.4	27	0	31	27	2	15	73	7.3
CAREER	10	10	282/28.2	25-64	.391	6-23	.261	17-25	.680	6	18	24	2.4	27	0	31	27	2	15	73	7.3



# #11 NYLA POLLARD

## SOPHOMORE - GUARD

VIRGINIA BEACH, VA. - PRINCESS ANNE

### >> POLLARD'S CAREER HIGHS

#### MINUTES

Season	37	at Norfolk State, 12/21/18
Career	37	at Norfolk State, 12/21/18

#### POINTS

Season	10	vs. East Carolina, 11/27/18
Career	14	vs. USC Upstate, 12/5/17

#### REBOUNDS

Season	12	vs. East Carolina, 11/27/18
Career	12	vs. East Carolina, 11/27/18

#### FIELD GOALS

Season	4	at Loyola, 11/14/18
Career	6	vs. USC Upstate, 12/5/17

#### 3-POINT FIELD GOALS

Season	2	vs. Howard, 11/12/18
Career	2	(5x) last time vs. HU, 11/12/18

#### FREE THROWS

Season	6	vs. East Carolina, 11/27/18
Career	6	vs. East Carolina, 11/27/18

#### ASSISTS

Season	4	(3x) last time at NSU, 12/21/18
Career	5	(2x) last time vs. ODU, 12/17/17

#### STEALS

Season	3	vs. Richmond, 12/5/18
Career	4	vs. Davidson, 11/27/17

#### BLOCKS

Season	-	-
Career	1	(4x) last time vs. UD, 2/23/18

#### MISCELLANEOUS

Career in Double Figures	4
2018-19 in Double Figures	1

### >> 2018-19 GAME-BY-GAME

Opp	Date	GS	Min	FG-A	3FG-A	FT-A	Reb.	A	TO	BLK	STL	Pts
VCU	11/6	19	2-4	1-1	0-1	1	0	0	0	1	5	
HOW	11/12	34	3-7	2-3	0-0	3	2	2	0	2	8	
at Loy	11/17	23	4-6	1-2	0-0	2	4	1	0	1	9	
at DC	11/24	25	1-4	0-2	0-1	1	1	2	0	0	2	
ECU	11/27 *	35	2-9	0-3	6-8	12	2	4	1	0	10	
at Hart	11/30 *	25	0-6	0-3	0-0	3	2	2	0	0	0	
at Fair	12/2 *	27	0-3	0-0	2-4	3	3	3	0	2	2	
UOFR	12/5 *	35	2-5	1-4	0-0	2	2	3	0	3	5	
at ODU	12/8 *	20	0-2	0-1	2-2	0	4	2	0	2	2	
at NSU	12/21 *	37	2-6	0-2	2-2	2	4	0	0	1	6	

### >> POLLARD'S CAREER STATISTICS

Season	GP	GS	Min/Avg	FG-FGA	Pct	3pt-Att	Pct	FT-FTA	Pct	Off	Def	Reb	Avg	PF	FO	A	TO	Blk	S	TP	Avg
2017-18	30	27	658/21.9	44-121	.364	14-48	.292	20-27	.741	22	31	53	1.8	71	3	46	40	4	15	122	4.1
2018-19	10	6	281/28.1	16-52	.308	5-21	.238	12-18	.667	7	22	29	2.9	27	1	25	19	1	12	49	4.9
CAREER	40	33	939/23.5	60-173	.347	19-69	.275	32-45	.711	29	53	82	2.1	98	4	71	59	5	27	171	4.3



# #12 HARPER BIRDSONG

## SOPHOMORE - GUARD

### SUFFOLK, VA. - NANSEMOND SUFFOLK (George Washington)

#### >> BIRDSONG'S CAREER HIGHS

##### MINUTES

Season	30	at Old Dominion, 12/8/18
Career	30	at Old Dominion, 12/8/18

##### POINTS

Season	18	at Old Dominion, 12/8/18
Career	18	at Old Dominion, 12/8/18

##### REBOUNDS

Season	5	at Norfolk State, 12/21/18
Career	5	at Norfolk State, 12/21/18

##### FIELD GOALS

Season	6	at Old Dominion, 12/8/18
Career	6	at Old Dominion, 12/8/18

##### 3-POINT FIELD GOALS

Season	3	(4x) last time at NSU, 12/21/18
Career	3	(4x) last time at NSU, 12/21/18

##### FREE THROWS

Season	4	at Old Dominion, 12/8/18
Career	4	at Old Dominion, 12/8/18

##### ASSISTS

Season	4	at Old Dominion, 12/8/18
Career	4	at Old Dominion, 12/8/18

##### STEALS

Season	1	(7x) last time at NSU, 12/21/18
Career	1	(7x) last time at NSU, 12/21/18

##### BLOCKS

Season	1	(2x) last time vs. ECU, 11/27/18
Career	1	(3x) last time vs. ECU, 11/27/18

##### MISCELLANEOUS

Career in Double Figures	7
2018-19 in Double Figures	7

#### >> 2018-19 GAME-BY-GAME

Opp	Date	GS	Min	FG-A	3FG-A	FT-A	Reb.	A	TO	BLK	STL	PTS
VCU	11/6	*	12	0-4	0-2	0-0	0	0	4	0	0	0
HOW	11/12	*	16	5-10	1-4	1-2	2	1	1	1	1	12
at Loy	11/17	*	14	3-3	3-3	0-2	0	0	2	0	0	9
at DC	11/24	*	20	4-10	2-6	0-0	0	2	1	0	1	10
ECU	11/27		19	3-9	1-3	3-3	1	1	3	1	1	10
at Hart	11/30		19	2-5	2-5	2-5	1	1	2	0	0	8
at Fair	12/2		25	3-8	3-5	2-2	0	0	1	0	0	11
UOFR	12/5		18	5-7	3-5	0-0	2	2	1	0	1	13
at ODU	12/8		30	6-18	2-8	4-4	2	4	3	0	1	18
at NSU	12/21		28	5-11	3-7	1-1	5	1	4	0	1	14

#### >> BIRDSONG'S CAREER STATISTICS

Season	GP	GS	Min/Avg	FG-FGA	Pct	3pt-Att	Pct	FT-FTA	Pct	Off	Def	Reb	Avg	PF	FO	A	TO	Blk	S	TP	Avg
2016-17	8	0	39/4.9	4-13	.308	2-8	.250	1-1	1.000	0	2	2	0.3	2	0	2	1	0	1	11	1.4
2017-18																					
DNP - NCAA TRANSFER RULE																					
2018-19	10	4	201/20.1	36-85	.424	20-48	.417	13-19	.685	5	8	13	1.3	22	1	12	2	2	7	105	10.5
CAREER	18	4	240/13.3	40-98	.408	22-56	.393	14-20	.700	5	10	15	0.8	24	1	14	3	2	8	116	6.4



# #15 EMMA KRAUSE

## FRESHMAN - FORWARD

### PLANTATION, FLA. - CARDINAL GIBBONS

#### >> KRAUSE'S CAREER HIGHS

##### MINUTES

Season	22	at Hartford, 11/30/18
Career	22	at Hartford, 11/30/18

##### POINTS

Season	14	vs. Howard, 11/12/18
Career	14	vs. Howard, 11/12/18

##### REBOUNDS

Season	5	(2x) last time at ODU, 12/8/18
Career	5	(2x) last time at ODU, 12/8/18

##### FIELD GOALS

Season	5	vs. Howard, 11/12/18
Career	5	vs. Howard, 11/12/18

##### 3-POINT FIELD GOALS

Season	4	vs. Howard, 11/12/18
Career	4	vs. Howard, 11/12/18

##### FREE THROWS

Season	2	at Fairfield, 12/2/18
Career	2	at Fairfield, 12/2/18

##### ASSISTS

Season	3	at Loyola, 11/14/18
Career	3	at Loyola, 11/14/18

##### STEALS

Season	2	at Loyola, 11/14/18
Career	2	at Loyola, 11/14/18

##### BLOCKS

Season	2	vs. Howard, 11/12/18
Career	2	vs. Howard, 11/12/18

##### MISCELLANEOUS

Career in Double Figures	1
2018-19 in Double Figures	1

#### >> 2018-19 GAME-BY-GAME

Opp	Date	GS	Min	FG-A	3FG-A	FT-A	Reb.	A	TO	BLK	STL	PTS
VCU	11/6		16	1-5	1-4	1-2	4	1	0	1	0	4
HOW	11/12		13	5-9	4-7	0-2	2	0	0	2	0	14
at Loy	11/17		18	2-2	1-1	0-0	5	3	1	0	2	5
at DC	11/24		16	3-5	3-4	0-0	3	0	0	0	0	9
ECU	11/27		15	2-6	2-4	0-0	4	2	0	0	0	6
at Hart	11/30		22	0-6	0-4	2-2	1	0	1	1	1	2
at Fair	12/2		11	0-3	0-2	2-2	4	0	1	0	0	2
UOFR	12/5		8	1-2	1-2	0-0	1	0	1	0	0	3
at ODU	12/8		21	1-5	0-3	0-0	5	1	0	1	1	2
at NSU	12/21		21	3-7	1-5	0-2	1	2	0	0	0	7

#### >> KRAUSE'S CAREER STATISTICS

Season	GP	GS	Min/Avg	FG-FGA	Pct	3pt-Att	Pct	FT-FTA	Pct	Off	Def	Reb	Avg	PF	FO	A	TO	Blk	S	TP	Avg
2018-19	10	0	161/16.1	18-50	.360	13-36	.361	5-10	.500	9	21	30	3.0	16	0	9	4	5	4	54	5.4
CAREER	10	0	161/16.1	18-50	.360	13-36	.361	5-10	.500	9	21	30	3.0	16	0	9	4	5	4	54	5.4





# #20 CHANDLER SMITH

## SENIOR - CENTER

### PORT TOBACCO, MD. - ST. MARY'S RYKEN

#### >> SMITH'S CAREER HIGHS

##### MINUTES

Season 8 (2x) last time vs. ECU, 11/27/18  
Career 18 at Delaware, 1/26/16

##### POINTS

Season 1 vs. Howard, 11/12/18  
Career 4 (4x) last time at SFU 12/2/17

##### REBOUNDS

Season 3 vs. East Carolina, 11/27/18  
Career 5 vs. Hofstra, 2/7/17

##### FIELD GOALS

Season -  
Career 2 (3x) last time at SFU, 12/2/17

##### 3-POINT FIELD GOALS

Season -  
Career -

##### FREE THROWS

Season 1 vs. Howard, 11/12/18  
Career 4 vs. Hofstra, 2/7/17

##### ASSISTS

Season 1 vs. Richmond, 12/5/18  
Career 1 (3x) last time vs. UofR, 12/5/18

##### STEALS

Season -  
Career 2 (2x) last time vs. Mount St. Mary's, 12/18/16

##### BLOCKS

Season 1 (2x) last time at Loyola 11/17/18  
Career 3 vs. Mount St. Mary's, 12/18/16

##### MISCELLANEOUS

Career in Double Figures 0  
2017-18 in Double Figures 0

#### >> 2018-19 GAME-BY-GAME

Opp	Date	GS	Min	FG-A	3FG-A	FT-A	Reb.	A	TO	BLK	STL	Pts
VCU	11/6	8	0-0	0-0	0-0	2	0	0	0	0	0	0
HOW	11/12	4	0-0	0-0	1-2	2	0	1	1	0	1	0
at Loy	11/17	4	0-1	0-0	0-0	0	0	0	1	0	0	0
at DC	11/24		DNP - COACH'S DECISION									
ECU	11/27	8	0-0	0-0	0-0	3	0	2	0	0	0	0
at Hart	11/30		DNP - COACH'S DECISION									
at Fair	12/2		DNP - COACH'S DECISION									
UOFR	12/5	5	0-0	0-0	0-0	1	1	0	0	0	0	0
at ODU	12/8		DNP - COACH'S DECISION									
at NSU	12/21	2	0-0	0-0	0-0	0	0	0	0	0	0	0

#### >> SMITH'S CAREER STATISTICS

Season	GP	GS	Min/Avg	FG-FGA	Pct	3pt-Att	Pct	FT-FTA	Pct	Off	Def	Reb	Avg	PF	FO	A	TO	Blk	S	TP	Avg
2015-16	19	0	97/5.1	3-12	.250	0-0	.000	0-6	.000	2	10	12	0.6	13	0	0	5	4	3	6	0.3
2016-17	13	0	77/5.9	6-21	.286	0-0	.000	7-8	.875	2	22	24	1.8	16	1	1	7	11	3	19	1.5
2017-18	21	0	86/4.1	5-17	.294	0-0	.000	0-0	.000	4	8	12	0.6	15	0	3	8	9	1	10	0.5
2018-19	6	0	31/5.2	0-1	.000	0-0	.000	1-2	.500	1	7	8	1.3	3	0	1	3	2	0	1	0.2
<b>CAREER</b>	<b>59</b>	<b>0</b>	<b>291/4.9</b>	<b>14-51</b>	<b>.275</b>	<b>0-0</b>	<b>.000</b>	<b>8-16</b>	<b>.500</b>	<b>9</b>	<b>47</b>	<b>56</b>	<b>0.9</b>	<b>47</b>	<b>1</b>	<b>5</b>	<b>23</b>	<b>26</b>	<b>7</b>	<b>36</b>	<b>0.6</b>



# #21 BAILEY EICHNER

## SOPHOMORE - GUARD/FORWARD

### CUDAHY, WISC. - CUDAHY

#### >> EICHNER'S CAREER HIGHS

##### MINUTES

Season 11 (2x) last time at ODU, 12/8/18  
Career 11 (2x) last time at ODU, 12/8/18

##### POINTS

Season 2 at Old Dominion, 12/8/18  
Career 4 vs. James Madison, 2/2/18

##### REBOUNDS

Season 6 at Old Dominion, 12/8/18  
Career 6 at Old Dominion, 12/8/18

##### FIELD GOALS

Season 1 at Old Dominion, 12/8/18  
Career 1 (3x) last time at ODU, 12/8/18

##### 3-POINT FIELD GOALS

Season -  
Career -

##### FREE THROWS

Season 1 vs. VCU, 11/6/18  
Career 2 vs. James Madison, 2/2/18

##### ASSISTS

Season -  
Career 2 at Hofstra, 1/19/18

##### STEALS

Season 2 at Old Dominion, 12/8/18  
Career 2 at Old Dominion, 12/8/18

##### BLOCKS

Season -  
Career 1 at Hofstra, 1/19/18

##### MISCELLANEOUS

Career in Double Figures 0  
2017-18 in Double Figures 0

#### >> EICHNER'S CAREER STATISTICS

Season	GP	GS	Min/Avg	FG-FGA	Pct	3pt-Att	Pct	FT-FTA	Pct	Off	Def	Reb	Avg	PF	FO	A	TO	Blk	S	TP	Avg
2017-18	16	0	46/2.9	2-6	.333	0-2	.000	4-8	.500	6	9	15	0.9	14	0	2	7	2	1	8	0.5
2018-19	5	0	31/6.2	1-6	.167	0-2	.000	1-2	.500	4	5	9	1.8	3	0	0	2	0	3	3	0.6
<b>CAREER</b>	<b>21</b>	<b>0</b>	<b>77/3.7</b>	<b>3-12</b>	<b>.250</b>	<b>0-4</b>	<b>.000</b>	<b>5-10</b>	<b>.500</b>	<b>10</b>	<b>14</b>	<b>23</b>	<b>1.1</b>	<b>17</b>	<b>0</b>	<b>2</b>	<b>9</b>	<b>2</b>	<b>4</b>	<b>11</b>	<b>0.5</b>

#### >> 2018-19 GAME-BY-GAME

Opp	Date	GS	Min	FG-A	3FG-A	FT-A	Reb.	A	TO	BLK	STL	Pts
VCU	11/6	11	0-2	0-1	1-2	1	0	1	0	0	1	0
HOW	11/12	1	0-0	0-0	0-0	0	0	1	0	0	0	0
at Loy	11/17	1	0-0	0-0	0-0	0	0	0	0	0	0	0
at DC	11/24	DNP - COACH'S DECISION										
ECU	11/26	DNP - COACH'S DECISION										
at Hart	11/30	DNP - COACH'S DECISION										
at Fair	12/2	DNP - COACH'S DECISION										
UOFR	12/5	DNP - COACH'S DECISION										
at ODU	12/8	11	1-2	0-0	0-0	6	0	0	0	0	2	0
at NSU	12/21	7	0-2	0-1	0-0	2	0	0	0	1	0	0



# #25 GABBY ROGERS

## SOPHOMORE - CENTER

### DALLAS, TEXAS - BISHOP LYNCH

#### >> ROGERS' CAREER HIGHS

##### MINUTES

Season	30	at Fairfield, 12/2/18
Career	30	at Fairfield, 12/2/18

##### POINTS

Season	10	at Davidson, 11/24/18
Career	10	at Davidson, 11/24/18

##### REBOUNDS

Season	5	(2x) last time at UofR, 12/5/18
Career	5	(3x) last time at UofR, 12/5/18

##### FIELD GOALS

Season	4	(3x) last time at Fair., 12/2/18
Career	4	(4x) last time at Fair., 12/2/18

##### 3-POINT FIELD GOALS

Season	-	-
Career	-	-

##### FREE THROWS

Season	2	(2x) last time at DC, 11/24/18
Career	2	(5x) last time at DC, 11/24/18

##### ASSISTS

Season	1	(2x) last time at Fair., 12/2/18
Career	1	(8x) last time at Fair., 12/2/18

##### STEALS

Season	3	at Hartford, 11/30/18
Career	3	(2x) last time at Hart, 11/30/18

##### BLOCKS

Season	1	(2x) last time at Hart, 11/30/18
Career	2	(2x) last time at Towson, 2/4/18

##### MISCELLANEOUS

Career in Double Figures	1
2018-19 in Double Figures	1

#### >> ROGERS' CAREER STATISTICS

Season	GP	GS	Min/Avg	FG-FGA	Pct	3pt-Att	Pct	FT-FTA	Pct	Off	Def	Reb	Avg	PF	FO	A	TO	Blk	S	TP	Avg
2017-18	29	0	263/9.1	24-47	.511	0-0	.000	9-13	.692	12	40	52	1.8	55	1	7	15	6	10	57	2.0
2018-19	10	10	194/9.4	21-43	.488	0-1	.000	5-6	.833	10	16	26	2.6	31	0	2	9	2	6	47	4.7
<b>CAREER</b>	<b>39</b>	<b>10</b>	<b>457/11.7</b>	<b>45-90</b>	<b>.500</b>	<b>0-1</b>	<b>.000</b>	<b>14-19</b>	<b>.737</b>	<b>22</b>	<b>56</b>	<b>78</b>	<b>2.0</b>	<b>86</b>	<b>1</b>	<b>9</b>	<b>24</b>	<b>8</b>	<b>16</b>	<b>104</b>	<b>2.7</b>

#### >> 2018-19 GAME-BY-GAME

Opp	Date	GS	Min	FG-A	3FG-A	FT-A	Reb.	A	TO	BLK	STL	Pts
VCU	11/6	*	18	1-2	0-0	2-2	1	0	2	0	0	4
HOW	11/12	*	19	1-2	0-0	0-0	3	0	2	1	0	2
at Loy	11/17	*	16	4-6	0-0	0-0	2	1	0	0	0	8
at DC	11/24	*	27	4-8	0-1	2-2	2	0	1	0	1	10
ECU	11/27	*	15	0-1	0-0	0-0	2	0	3	0	1	0
at Hart	11/30	*	18	1-2	0-0	0-0	1	0	0	1	3	2
at Fair	12/2	*	30	4-7	0-0	0-0	5	1	0	0	1	8
UOFR	12/5	*	29	2-7	0-0	1-2	5	0	1	0	0	5
at ODU	12/8	*	11	3-5	0-0	0-0	2	0	0	0	0	6
at NSU	12/21	*	10	1-3	0-0	0-0	3	0	0	0	0	2



# #30 VICTORIA REYNOLDS

## JUNIOR - FORWARD

### FAIRFAX, VA./ARCHBISHOP SPALDING

#### >> REYNOLDS' CAREER HIGHS

##### MINUTES

Season	37	(2x) last time at ODU, 12/8/18
Career	40	(2x) last time vs. UNCW, 2/16/18

##### POINTS

Season	15	vs. East Carolina, 11/27/18
Career	22	at St. Francis (Pa.), 12/2/17

##### REBOUNDS

Season	15	vs. East Carolina, 11/27/18
Career	18	vs. Charleston, 1/26/18

##### FIELD GOALS

Season	6	at Davidson, 11/24/18
Career	9	vs. Northeastern, 2/11/18

##### 3-POINT FIELD GOALS

Season	2	vs. Richmond, 12/5/18
Career	2	(3x) last time vs. UofR, 2/5/18

##### FREE THROWS

Season	6	(2x) last time at NSU, 12/21/18
Career	9	vs. Old Dominion, 12/17/17

##### ASSISTS

Season	5	vs. VCU, 11/6/18
Career	8	at East Carolina, 11/21/17

##### STEALS

Season	3	(2x) last time at Fair., 12/2/18
Career	7	vs. Hofstra, 1/28/18

##### BLOCKS

Season	3	at Norfolk State, 12/21/18
Career	3	(3x) last time vs. NSU, 12/21/18

##### MISCELLANEOUS

Career in Double Figures	27
2018-19 in Double Figures	8

#### >> 2018-19 GAME-BY-GAME

Opp	Date	GS	Min	FG-A	3FG-A	FT-A	Reb.	A	TO	BLK	STL	Pts
VCU	11/6	*	37	4-7	0-0	0-0	4	5	2	0	0	8
HOW	11/12	*	26	3-10	0-2	4-6	5	3	1	0	2	10
at Loy	11/17	*	33	4-10	0-0	2-2	5	2	7	0	0	10
at DC	11/24	*	29	6-8	0-0	1-1	3	2	2	0	1	13
ECU	11/27	*	35	4-6	1-1	6-6	15	4	6	2	1	15
at Hart	11/30	*	29	1-6	0-0	2-2	7	1	5	0	3	4
at Fair	12/2	*	30	4-8	0-0	4-6	4	1	3	0	3	12
UOFR	12/5	*	35	5-8	2-2	2-2	6	0	5	0	1	14
at ODU	12/8	*	37	4-10	1-4	4-4	6	2	5	2	1	13
at NSU	12/21	*	35	2-5	1-2	6-8	9	2	2	3	1	11

#### >> REYNOLDS' CAREER STATISTICS

Season	GP	GS	Min/Avg	FG-FGA	Pct	3pt-Att	Pct	FT-FTA	Pct	Off	Def	Reb	Avg	PF	FO	A	TO	Blk	S	TP	Avg
2016-17	28	0	466/16.6	51-104	.490	5-12	.417	36-46	.783	44	45	89	3.2	42	0	21	30	5	33	143	5.1
2017-18	30	30	977/32.6	125-270	.463	8-34	.235	50-68	.735	65	147	212	7.1	77	1	60	69	22	71	308	10.3
2018-19	10	10	325/32.5	37-78	.474	5-12	.417	31-37	.838	8	59	68	6.8	26	2	22	38	7	13	110	11.0
<b>CAREER</b>	<b>68</b>	<b>40</b>	<b>1768/26.0</b>	<b>213-452</b>	<b>.471</b>	<b>18-58</b>	<b>.310</b>	<b>117-151</b>	<b>.775</b>	<b>118</b>	<b>251</b>	<b>369</b>	<b>5.4</b>	<b>145</b>	<b>3</b>	<b>103</b>	<b>137</b>	<b>34</b>	<b>117</b>	<b>561</b>	<b>8.3</b>



# #32 CAROLINE STOVER

FRESHMAN - CENTER

PLYMTON, MASS. - CARDINAL SPELLMAN

## >> 2018-19 GAME-BY-GAME

Opp	Date	GS	Min	FG-A	3FG-A	FT-A	Reb.	A	TO	BLK	STL	Pts
VCU	11/6											DNP - COACH'S DECISION
HOW	11/12											DNP - COACH'S DECISION
at Loy	11/17	1		0-2	0-0	0-0	0	0	0	0	0	0
at DC	11/24											DNP - COACH'S DECISION
ECU	11/27											DNP - COACH'S DECISION
at Hart	11/30											DNP - COACH'S DECISION
at Fair	12/2											DNP - COACH'S DECISION
UOFR	12/5											DNP - COACH'S DECISION
at ODU	12/8											DNP - COACH'S DECISION
at NSU	12/21											DNP - COACH'S DECISION

## >> STOVER'S CAREER STATISTICS

MINUTES			FREE THROWS		
Season	1	at Loyola, 11/14/18	Season	-	-
Career	1	at Loyola, 11/14/18	Career	-	-
POINTS			ASSISTS		
Season	-	-	Season	-	-
Career	-	-	Career	-	-
REBOUNDS			STEALS		
Season	-	-	Season	-	-
Career	-	-	Career	-	-
FIELD GOALS			BLOCKS		
Season	-	-	Season	-	-
Career	-	-	Career	-	-
3-POINT FIELD GOALS			MISCELLANEOUS		
Season	-	-	Career in Double Figures		0
Career	-	-	2018-19 in Double Figures		0

## >> STOVER'S CAREER STATISTICS

Season	GP	GS	Min/Avg	FG-FGA	Pct	3pt-Att	Pct	FT-FTA	Pct	Off	Def	Reb	Avg	PF	FO	A	TO	Blk	S	TP	Avg
2018-19	1	0	1/1.0	0-2	.000	0-0	.000	0-0	.000	0	0	0	0.0	0	0	0	0	0	0	0	0.0
CAREER	1	0	1/1.0	0-2	.000	0-0	.000	0-0	.000	0	0	0	0.0	0	0	0	0	0	0	0	0.0



2018-19 Tribe Women's Basketball





**W&M Women's Basketball**  
**William & Mary Season Schedule/Results & Leaders (as of Dec 21, 2018)**  
**All games**

<b>RECORD:</b>	<b>OVERALL</b>	<b>HOME</b>	<b>AWAY</b>	<b>NEUTRAL</b>
ALLGAMES	6-4	3-1	3-3	0-0
CONFERENCE	0-0	0-0	0-0	0-0
NON-CONFERENCE	6-4	3-1	3-3	0-0

<b>Date</b>	<b>Opponent</b>	<b>Score</b>	<b>Att. High</b>	<b>Points</b>	<b>High Rebounds</b>
11/06/18	VCU	55-72 L	684	(15)Boggs, Bianca	(6)Boggs, Bianca
11/12/18	HOWARD	W 88-75	564	(26)Boggs, Bianca	(9)Boggs, Bianca
11/17/18	at Loyola	W 65-49	352	(14)Boggs, Bianca	(6)Reynolds, Victoria
11/24/18	at Davidson	65-76 L	412	(18)Boggs, Bianca	(10)Boggs, Bianca
11/27/18	EAST CAROLINA	W 63-43	574	(15)Reynolds, Victoria	(15)Reynolds, Victoria
11/30/18	at HARTFORD	45-50 L	649	(14)Hodgson, Eva	(7)Reynolds, Victoria
12/02/18	at Fairfield	W 60-54	627	(22)Boggs, Bianca	(5)Hodgson, Eva
					(5)Rogers, Gabby
					(5)Boggs, Bianca
12/05/18	RICHMOND	W 65-55	634	(15)Hodgson, Eva	(6)Reynolds, Victoria
12/8/18	at Old Dominion	69-83 L	1802	(18)Birdsong, Harper	(6)Reynolds, Victoria
					(6)Eichner, Bailey
12/21/18	at Norfolk State	W 55-44	246	(14)Birdsong, Harper	(9)Reynolds, Victoria

\* - Conference game

<b>Attendance Summary</b>	<b>Games</b>	<b>Attend</b>	<b>Avg/Game</b>
Home	4	2456	614
Away	6	4088	681
Neutral	0	0	0
Total	10	6544	654



**W&M Women's Basketball**  
**William & Mary Combined Team Statistics (as of Dec 21, 2018)**  
**All games**

<b>RECORD:</b>	<b>OVERALL</b>	<b>HOME</b>	<b>AWAY</b>	<b>NEUTRAL</b>
ALL GAMES	6-4	3-1	3-3	0-0
CONFERENCE	0-0	0-0	0-0	0-0
NON-CONFERENCE	6-4	3-1	3-3	0-0

#	Player	gp-gs	min	avg	Total		3-Point		F-Throw		Rebounds				pf	dq	a	to	blk	stl	pts	avg
					fg-fga	fg%	3fg-fga	3fg%	ft-fa	ft%	off	def	tot	avg								
02	Boggs, Bianca	10-10	343	34.3	55-132	.417	9-37	.243	32-43	.744	10	54	64	6.4	21	0	42	45	7	28	151	15.1
30	Reynolds, Victoria	10-10	325	32.5	37-78	.474	5-12	.417	31-37	.838	9	59	68	6.8	26	2	22	38	7	13	110	11.0
12	Birdsong, Harper	10-4	201	20.1	36-85	.424	20-48	.417	13-19	.684	5	8	13	1.3	22	1	12	22	2	7	105	10.5
10	Hodgson, Eva	10-10	282	28.2	25-64	.391	6-23	.261	17-25	.680	6	18	24	2.4	27	0	31	27	2	15	73	7.3
15	Krause, Emma	10-0	161	16.1	18-50	.360	13-36	.361	5-10	.500	9	21	30	3.0	16	0	9	4	5	4	54	5.4
11	Pollard, Nyla	10-6	281	28.1	16-52	.308	5-21	.238	12-18	.667	7	22	29	2.9	27	1	25	19	1	12	49	4.9
25	Rogers, Gabby	10-10	194	19.4	21-43	.488	0-1	.000	5-6	.833	10	16	26	2.6	31	0	2	9	2	6	47	4.7
05	Jones, Misha	10-0	99	9.9	10-24	.417	5-16	.313	3-4	.750	9	9	18	1.8	15	0	11	6	2	1	28	2.8
00	Underwood, Libby	8-0	49	6.1	4-9	.444	0-2	.000	1-2	.500	1	0	1	0.1	1	0	1	5	1	1	9	1.1
21	Eichner, Bailey	5-0	31	6.2	1-6	.167	0-2	.000	1-2	.500	4	5	9	1.8	3	0	0	2	0	3	3	0.6
20	Smith, Chandler	6-0	31	5.2	0-1	.000	0-0	.000	1-2	.500	1	7	8	1.3	3	0	1	3	2	0	1	0.2
03	Taylor, Ashley	2-0	2	1.0	0-1	.000	0-1	.000	0-0	.000	0	0	0	0.0	0	0	0	0	0	0	0	0.0
32	Stover, Caroline	1-0	1	1.0	0-2	.000	0-0	.000	0-0	.000	0	0	0	0.0	0	0	0	0	0	0	0	0.0
Team											20	30	50					4				
Total.....		10	2000		223-547	.408	63-199	.317	121-168	.720	91	249	340	34.0	192	4	156	184	31	90	630	63.0
Opponents.....		10	1999		209-539	.388	45-171	.263	138-200	.690	106	245	351	35.1	194	3	118	201	29	97	601	60.1

<b>TEAM STATISTICS</b>	<b>WM</b>	<b>OPP</b>
SCORING	630	601
Points per game	63.0	60.1
Scoring margin	+2.9	-
FIELD GOALS-ATT	223-547	209-539
Field goal pct	.408	.388
3 POINT FG-ATT	63-199	45-171
3-point FG pct	.317	.263
3-pt FG made per game	6.3	4.5
FREE THROWS-ATT	121-168	138-200
Free throw pct	.720	.690
F-Throws made per game	12.1	13.8
REBOUNDS	340	351
Rebounds per game	34.0	35.1
Rebounding margin	-1.1	-
ASSISTS	156	118
Assists per game	15.6	11.8
TURNOVERS	184	201
Turnovers per game	18.4	20.1
Turnover margin	+1.7	-
Assist/turnover ratio	0.8	0.6
STEALS	90	97
Steals per game	9.0	9.7
BLOCKS	31	29
Blocks per game	3.1	2.9
ATTENDANCE	2456	4088
Homegames-Avg/Game	4-614	6-681
Neutral site-Avg/Game	-	0-0

<b>Date</b>	<b>Opponent</b>	<b>Score</b>	<b>Att.</b>
11/06/18	VCU	L 55-72	684
11/12/18	HOWARD	W 88-75	564
11/17/18	at Loyola	W 65-49	352
11/24/18	at Davidson	L 65-76	412
11/27/18	EAST CAROLINA	W 63-43	574
11/30/18	at HARTFORD	L 45-50	649
12/02/18	at Fairfield	W 60-54	627
12/05/18	RICHMOND	W 65-55	634
12/8/18	at Old Dominion	L 69-83	1802
12/21/18	at Norfolk State	W 55-44	246

\* - Conference game

<b>Score by Periods</b>	<b>1st</b>	<b>2nd</b>	<b>3rd</b>	<b>4th</b>	<b>Totals</b>
William & Mary	163	157	164	146	630
Opponents	148	145	157	151	601

# WILLIAM & MARY RADIO AND TV CHART

**NOTES:** W&M looks to make it two in a row as it closes out non-conference play against George Washington Saturday ... The Tribe was selected to finish sixth in the CAA by a vote of league head coaches. Senior Bianca Boggs leads the Tribe averaging 15.1 ppg. Junior Victoria Reynolds is just off of the pace averaging 11.0 points per game, while redshirt sophomore Harper Birdsong is also averaging double-figures with 10.5 points per game.

RECORD	2018-19	LAST YR	STATS	W&M	OPP	GW	OPP	W&M'S LAST THREE GAMES		
<b>OVERALL</b>	6-4	16-14	<b>FG%</b>	.408	.388	.328	.401	<b>Dec. 5</b>	<b>RICHMOND</b>	<b>W, 65-55</b>
<b>CAA</b>	0-0	7-11	<b>FT%</b>	.720	.690	.288	.755	Hodgson 15 pts, Reynolds 14 pts, Birdsong 13 pts		
<b>HOME</b>	3-1	9-6	<b>3PT%</b>	.317	.263	.609	.250	<b>Dec. 8</b>	<b>at Old Dominion</b>	<b>L, 69-83</b>
<b>AWAY/NEUTRAL</b>	3-3/0-0	7-7/0-1	<b>POINTS</b>	63.0	60.1	49.5	60.1	Birdsong 18 pts, Boggs 17 pts, Reynolds 13 pts		
			<b>REBOUNDS</b>	34.0	35.1	33.5	40.4	<b>Dec. 21</b>	<b>at Norfolk State</b>	<b>W, 55-44</b>
			<b>TURNOVERS</b>	18.4	20.1	15.2	14.3	Birdsong 14 pts, Reynolds 11 pts, 9 reb, Boggs 10 pts.		



## 0 LIBBY UNDERWOOD, G

SO./5-9/RYE, N.H./PORTSMOUTH

PPG	1.1	FG%	.419
RPG	0.1	FT%	.500 (1-2)
APG	0.1	3PT%	.000

- Looking to expand her role during her second season with the Green and Gold.
- Had six points and added a block and assist against VCU (11/6).
- Scored a career-high 8 points and added out 3 assists against USC Upstate (12/5/17).
- Added four points in a rebound against Drexel (1/9/18).
- Grabbed a rebound in the CAA Quarterfinal against Elon (3/8/18).

<b>POINTS</b>	8 vs. USC Upstate (12/5/17)
<b>REBOUNDS</b>	3 vs. Northeastern (1/21/18)
<b>ASSISTS</b>	3 vs. USC Upstate (12/5/17)
<b>LAST GAME:</b>	<b>PLAYED 5 MINUTES</b>



## 1 SYDNEY WAGNER, G

SO./5-6/PHOENIXVILLE, PA./SPRING FORD SENIOR HIGH (STETSON)

PPG	-	FG%	-
RPG	-	FT%	-
SPG	-	3PT%	-

- Transfer from Stetson that has to sit out the 18-19 season due to NCAA Transfer rule.
- Appeared in 32 games with nine starters for the Hatters last season.
- Scored a career-high 20 points against Florida.
- Dropped 18 points against on 5-of-8 from 3-point range against Webber International.
- Averaged 6.0 ppg and knocked down 42 triples during her freshman season at Stetson.

<b>POINTS</b>	20 vs. Florida (11/22/17)
<b>REBOUNDS</b>	5 vs. Lipscomb (2/19/18)
<b>ASSISTS</b>	3 vs. Lipscomb (2/19/18)
<b>LAST GAME:</b>	<b>DNP - TRANSFER RULE</b>



## 2 BIANCA BOGGS, G

SR./5-8/WALDORF, MD./ST. MARY'S RYKEN

PPG	15.1	FG%	.417
RPG	6.4	FT%	.744 (32-43)
APG	4.2	3PT%	.243

- Named team captain for the 2018-19 season.
- Earned Preseason First-Team All-CAA honors this season.
- Notched a double-double with 18 points and 10 rebounds at Davidson (11/24).
- Scored a career-high 33 points in a win at St. Francis (12/2/17).
- Ranks 17th in school history with 1,076 career points.

<b>POINTS</b>	33 vs. St. Francis (Pa.) (12/2/17)
<b>REBOUNDS</b>	11 (2x) last time vs. ECU (11/27/18)
<b>ASSISTS</b>	8 at Delaware (2/9/18)
<b>LAST GAME:</b>	<b>10 PTS, 8 REB, 4 AST</b>



## 3 ASHLEY TAYLOR, G

JR./6-0/CHARLOTTESVILLE, VA./ST. ANNE'S BELLEFIELD

PPG	0.0	FG%	-
RPG	0.0	FT%	-
APG	0.0	3PT%	-

- Has seen action in 21 games during her career with the Tribe.
- Made her first career basket, a 3-pointer, in the win against USC Upstate (12/5/17).
- Grabbed a pair of rebounds and added an assist against Loyola (11/25/17).
- Hit a basket and grabbed a board at Elon (3/1/18)

<b>POINTS</b>	3 vs. USC Upstate (12/5/17)
<b>REBOUNDS</b>	2 vs. Loyola (11/25/17)
<b>ASSISTS</b>	1 (4x) last time at Charleston (12/29/17)
<b>LAST GAME:</b>	<b>DNP - COACH'S DECISION</b>



## 5 MISHA JONES, G/F

SR./5-9/MANASSAS PARK, VA./BATTLEFIELD

PPG	2.8	FG%	.417
RPG	1.8	FT%	.750 (3-4)
APG	1.1	3PT%	.333

- Named a team captain for the second straight season this year.
- Had four points, four rebounds, and four assists at Old Dominion (12/8).
- Scored a career-high nine points, including seven straight points in the win vs. Howard.
- Matched a career-high with seven points against USC Upstate (12/5/17).
- Played a career-high 27 minutes with five points and five rebounds vs. UD (2/23/18).

<b>POINTS</b>	9 vs. Howard (11/12/18)
<b>REBOUNDS</b>	5 (2x) vs. Delaware (2/23/18)
<b>ASSISTS</b>	4 (3x) at Old Dominion (12/8/18)
<b>LAST GAME:</b>	<b>1 STL IN 8 MINS</b>



## 10 EVA HODGSON, G

FR./5-9/RINDGE, N.H./NEW HAMPTON SCHOOL

PPG	7.3	FG%	.391
RPG	2.4	FT%	.680 (17-25)
APG	3.1	3PT%	.261

- Named CAA Rookie of the Week for the week of Dec. 3.
- Set career-highs against Richmond (12/5) in points (15) and assists (6).
- Netted a then-career-high with 14 points at Hartford (11/30).
- Scored a then-career-high 13 points in the win against East Carolina (11/27).
- Her parents and two brothers all played Division III basketball.

<b>POINTS</b>	15 vs. Richmond (12/5/18)
<b>REBOUNDS</b>	5 (2x) last time at Fairfield (12/2/18)
<b>ASSISTS</b>	6 vs. Richmond (12/5/18)
<b>LAST GAME:</b>	<b>5 PTS, 1 REB, 2 AST</b>



## 11 NYALA POLLARD, G

SO./5-9/VIRGINIA BEACH, VA./PRINCESS ANNE

PPG	4.9	FG%	.308
RPG	2.9	FT%	.667 (12-18)
APG	2.5	3PT%	.238

- Should be a major contributor after being named to the CAA All-Rookie team last year.
- Made her first start of the year & had a double-double (10 pts, 12 reb) vs. ECU (11/27).
- Had nine points and added two rebounds, four assists, and a steal at Loyola (11/17).
- Tabbed back-to-back CAA Rookie of the Week for the week of Dec. 11 and Dec. 18.
- Scored a career-high 14 points, four assists, three rebounds against Upstate (12/5/17).

<b>POINTS</b>	14 vs. USC Upstate (12/5/17)
<b>REBOUNDS</b>	12 vs. East Carolina (11/27/18)
<b>ASSISTS</b>	5 (2x) last time vs. ODU (12/17/17)
<b>LAST GAME:</b>	<b>6 PTS, 2 REB, 4 AST</b>



## 12 HARPER BIRDSONG, G

R-/SO./5-10/SUFFOLK, VA./NANSEMOND SUFFOLK (GW)

PPG	10.5	FG%	.424
RPG	1.3	FT%	.684 (13-19)
APG	1.2	3PT%	.417

- Set a career-high with 18 points and four assists at Old Dominion (12/8).
- Had 14 points, a career-high five rebounds, and one assist at Norfolk State (12/21).
- Scored a then-career-high 13 points and added two rebounds vs. Uofr (12/5).
- Had a career-high 12 points in the win against Howard (11/12).
- Appeared in nine games during her freshman season at George Washington.

<b>POINTS</b>	18 vs. Old Dominion (12/8/18)
<b>REBOUNDS</b>	5 at Norfolk State (12/21/18)
<b>ASSISTS</b>	4 at Old Dominion (12/8/18)
<b>LAST GAME:</b>	<b>14 PTS, 5 REB, 1 AST</b>



## 15 EMMA KRAUSE, F

FR./6-2/PLANTATION, FLA./CARDINAL GIBBONS

PPG	5.4	FG%	.360
RPG	3.0	FT%	.500 (5-10)
BPG	0.5	3PT%	.361

- Named CAA Rookie of the Week for the week of Dec. 24.
- Freshman, stretch four that can step out and knock down the three-ball.
- Netted a career-high 14 points on four 3-pointers against Howard (11/12).
- Hit three 3-pointers for nine points and had three rebounds at Davidson (11/24).
- Tabbed to the Sun-Sentinel First-Team All-Broward County following her junior season.

<b>POINTS</b>	14 vs. Howard (11/12/18)
<b>REBOUNDS</b>	5 vs. Old Dominion (12/8/18)
<b>ASSISTS</b>	3 at Loyola (11/17/18)
<b>LAST GAME:</b>	<b>7 PTS, 1 REB, 2 AST</b>



## 20 CHANDLER SMITH, C

SR./6-3/PORT TOBACCO, MD./ST. MARY'S-RYKEN

PPG	0.2	FG%	.000
RPG	1.3	FT%	.500 (1-2)
BPG	0.3	3PT%	-

- Named a team captain for her senior season.
- Key reserve in the post that has appeared in 59 career games.
- Tied a career-high with four points in a win at St. Francis (12/1/17).
- Grabbed a career-high five rebounds at Hofstra (2/7/17).
- Rejected 26 shots during her career.

<b>POINTS</b>	4 (4x) last time at SFU (12/2/17)
<b>REBOUNDS</b>	5 vs. Hofstra (2/7/17)
<b>BLOCKS</b>	3 vs. Mount St. Mary's (12/18/16)
<b>LAST GAME:</b>	<b>- PLAYED 2 MINS</b>



## 21 BAILEY EICHNER, G/F

SO./6-1/CUDAHY, WISC./CUDAHY

PPG	1.1	FG%	.167
RPG	1.8	FT%	.500 (1-2)
APG	0.0	3PT%	.000

- Looking to expand her role this year after seeing action in 17 games last year.
- Grabbed a career-high six rebounds at Old Dominion (12/8/18).
- Had a career-high four points and added a career-high five rebounds vs. JMU (2/2/18).
- Made her collegiate debut in last year's season opener at Howard (11/11/17).
- Three sport athlete in high school playing basketball, volleyball, and track & field.

<b>POINTS</b>	4 vs. James Madison (2/2/18)
<b>REBOUNDS</b>	6 at Old Dominion (12/8/18)
<b>ASSISTS</b>	2 vs. Hofstra (1/19/18)
<b>LAST GAME:</b>	<b>2 REB, 1 STL IN 7 MINS</b>



## 25 GABBY ROGERS, C

SO./6-1/DALLAS, TEXAS/BISHOP LYNCH

PPG	4.7	FG%	.488
RPG	2.6	FT%	.833 (5-6)
SPG	0.2	3PT%	-

- Center that has started all 10 games this season for the Tribe.
- Had eight points and tied a career-high with five rebounds in the win at Fairfield (12/2).
- Scored a career-high 10 points and a steal at Davidson (11/24).
- Notched a then-season-high eight points in the win at Loyola (11/17).
- Made her first career start on opening night against VCU (11/6) scoring four points.

<b>POINTS</b>	10 at Davidson (11/24/18)
<b>REBOUNDS</b>	5 (3x) vs. Richmond (12/5/18)
<b>ASSISTS</b>	1 (3x) last time vs. USC Upstate (12/5/17)
<b>LAST GAME:</b>	<b>2 PTS, 3 REB IN 10 MINS</b>



## 30 VICTORIA REYNOLDS, F

JR./5-10/FAIRFAX, VA./ARCHBISHOP SPALDING

PPG	11.0	FG%	.474
RPG	6.8	FT%	.838 (31-37)
SPG	1.3	3PT%	.417

- Started the last 40 games for the Tribe.
- Recorded a double-double with 15 points and 15 rebounds against ECU (11/27/18).
- Scored 14 points and matched a career-high with two 3-pointers against Uofr (12/5/18).
- Scored a career-high 22 points in the win at St. Francis (12/2/17).
- Grabbed 18 boards in the win against Charleston (1/26/18).

<b>POINTS</b>	22 vs. St. Francis (Pa.) (12/2/17)
<b>REBOUNDS</b>	18 vs. Charleston (1/26/18)
<b>STEALS</b>	7 vs. Hofstra (1/28/18)
<b>LAST GAME:</b>	<b>11 PTS, 9 REB, 3 BLK</b>



## 32 CAROLINE STOVER, C

FR./6-3/PLYMPTON, MASS./CARDINAL SPELLMAN

PPG	0.0	FG%	.000
RPG	0.0	FT%	-
APG	0.0	3PT%	-

- Made her collegiate debut in the Tribe's win over Loyola.
- Freshman post player looking to break into the post rotation this season.
- Played four seasons of varsity basketball at Cardinal Spellman.
- Ranked as the No. 131 in her class by Blue Star.
- Tabbed to the Catholic Central League All-Star team.

<b>POINTS</b>	-
<b>REBOUNDS</b>	-
<b>STEALS</b>	-
<b>LAST GAME:</b>	<b>DNP - COACH'S DECISION</b>

**NOTES:**