



## WILLIAM &amp; MARY

MEDIA RELATIONS DIRECTOR: Andrew Phillips / PHONE: (757) 221-3344 / CELL: (804) 840-4439 / EMAIL: atphillips01@wm.edu

## TRIBE BY THE NUMBERS

11	W&M drained the sixth-most 3-pointers in school history with 11 against Howard. It was the most in a game since Jan. 26, 2014.
17	Head coach Ed Swanson now has 483 career victories, which puts him just 17 wins away from his 500th career victory.
32	Despite the setback at Hartford, W&M forced the Hawks into a season-high 32 turnovers, including a season-high 16 steals.
54	The senior class – Bianca Boggs, Misha Jones, and Chandler Smith – have won 54 games. They are just 13 wins away from becoming the winningest class in school history.
56	W&M grabbed 56 rebounds in the win against ECU. It was the most rebounds in a contest since the Tribe had 53 against Old Dominion on Dec. 29, 2015.
70	70 seems to be a magic number under Swanson. W&M has reached that mark 41 times under Swanson, and has posted a 36-5 mark when it scores more than 70 points.
100	W&M is celebrating 100 years of women on campus this academic year. The UofR game on Dec. 5 will serve as a celebration of 100 years of women's basketball on campus.
1019	Bianca Boggs now 1,019 career points that ranks her 20th in school history. With three points today she can move into 19th all-time, and with 12 she can move into 18th place.

## WHEN REFERENCING WILLIAM &amp; MARY AND TRIBE:

**William & Mary:** preferred in all but formal treatments  
**W&M:** most informal, use as second reference or on scorebug  
**College of William & Mary:** preferred formal treatment  
**Do not use:** WM, William and Mary, College of William and Mary, The College of William and Mary, The College

The William & Mary Athletics official nickname is the Tribe. While the Griffin is the official mascot of William & Mary Tribe Athletics, do not reference teams or the school as the Griffins.

## GAME

7

## WILLIAM &amp; MARY (3-3, 0-0 CAA) vs. FAIRFIELD (2-4, 0-0 MAAC)

Sunday, Dec. 2, 2018 | 2:00 PM | Fairfield, Conn. | Alumni Gym  
Video: ESPN3 | Live Stats: FairfieldStags.com

## SERIES HISTORY

ALL-TIME	W&M leads 1-0	Last: W&M, 57-47 (Kaplan Arena) (11/14/17)
AT FAIRFIELD	First Meeting	Last: N/A

## W&amp;M NEWS AND NOTES

- The William & Mary women's basketball team hopes to bounce back as it closes its two-game Connecticut road trip on Sunday, Dec. 2 at Fairfield. Tip off is set for 2 p.m.
- W&M's defense has come to play the last two times out, holding both of its opponents to 50 points or less. In Swanson's tenure the Tribe has posted a 19-2 record in games when its opponents have scored 50 points, or less.
- Senior Bianca Boggs was announced as one of 30 national candidates for the Senior CLASS Award. The Senior CLASS Award focuses on the total student-athlete and encourages students to use their platform in athletics to make a positive impact as leaders in their communities. Boggs was the lone player from CAA women's basketball honored, and along with men's basketball player Paul Rowely, W&M was one of three DI schools with a candidate for the both the men's and women's Senior CLASS Award.
- For the first time since Jan. 26, 2018, two W&M players recorded double-doubles in the same game against East Carolina. Both Victoria Reynolds (15 points and 15 rebounds) and Nyla Pollard (10 points and 12 rebounds) recorded their first double-doubles of the season in the win against the Pirates.
- After scoring double-figures in four of the last five games, junior Victoria Reynolds is now the second Tribe player to be averaging double-figures this season. Reynolds is averaging 10.0 points and 7.2 rebounds, while handing out 2.8 assists a night. The Fairfax, Va. native has started the last 36 contests for the Tribe and is also averaging 10.2 points per game during that stretch.
- Boggs has been in double-figures in five of six games this season, and has accomplished that feat in 30 of her last 36 contests. Boggs was selected to the Preseason All-CAA First-Team after a breakout junior season. The senior captain became the first Tribe player in a decade to receive First-Team All-CAA honors as she claimed the award last season. She leads the team with 15.7 points per night 7.8 rebounds, and 4.7 assists per night. Boggs is the only player in the CAA that ranks in the top six in the league in points, rebounds, assists, and steals.
- Freshman Emma Krause had a breakout game against Howard as she came off the bench to score 14 points grab two rebounds, and two blocks. Krause is scoring 6.7 points per game, in just 16.7 minutes per game. The Plantation, Fla. native is shooting a team-high 45-percent (11-for-24) from 3-point range, which is good for eighth in the CAA.
- W&M has started freshman point guard Eva Hodgson in every game this season and the early returns have been good. The freshman has been in double-figures in the last two games, and is averaging 7.7 points per game, with 2.2 rebounds, and has handed out 16 helpers. Hodgson scored a season-high 14 points last time out at Hartford.
- After being named to the all-rookie team as freshman, sophomore Nyla Pollard has expanded her role this year. After coming off of the bench in the first four games, the sophomore has started the last two games. She is averaging 5.7 points, 3.7 rebounds, 0.7 steals, and 2.0 assists per game.
- Redshirt sophomore Harper Birdsong is making the most of her first year with the Tribe after transferring in from George Washington and having to sit out last season due to NCAA rules. Birdsong has started four games, and after not scoring in the opener against VCU has scored 49 points in the last five games. She has been in double-figures in three of the last five games for the Tribe as well.

	Nov. 6	VCU	L, 55-72	Senior Bianca Boggs scored 15 points, but the Tribe couldn't overcome an early scoring drought falling to in-state rival VCU on opening night.
	<b>NOV. 12</b>	<b>HOWARD</b>	<b>W, 88-75</b>	Four players scored in double-figures as the Tribe picked up its first victory of the season. Senior Bianca Boggs led the Tribe with 26 points, nine rebounds, and seven assists.
	Nov. 17	at Loyola (Md.)	W, 65-49	The Tribe led throughout as it won its first road game of the season with a convincing 65-49 decision at Davidson. Boggs (14) and Reynolds (10) were both in double-figures.
	Nov. 24	at Davidson	L, 65-76	W&M fought all afternoon, but Davidson pulled away down the stretch as it fell to Davidson 76-65. Bianca Boggs notched a double-double with 18 points and 10 rebs.
	<b>NOV. 27</b>	<b>ECU</b>	<b>W, 63-43</b>	Both Victoria Reynolds and Nyla Pollard recorded a double-double as the Tribe cruised to a 20-point victory after previously unbeaten East Carolina.
	Nov. 30	at Hartford	L, 45-50	W&M couldn't overcome a cold shooting night as it shot just 22.2-percent (12-of-54) from the floor. Freshman Eva Hodgson led the team with a career-high 14 points.
	Dec. 2	at Fairfield Video: ESPN3	2 PM	For just the second time, the Tribe and Fairfield will meet on the basketball court. The first meeting came just a year ago, a 57-47 Green and Gold triumph.
	<b>Dec. 5</b>	<b>RICHMOND</b> Video: TribeAthletics.TV	<b>7 PM</b>	Two former CAA rivals, W&M and Richmond for the 112th time in series history. UofR leads the all-time series 83-27-1, but the Tribe has won the last two meetings.
	Dec. 8	at Old Dominion Video: CUSA.TV	7 PM	The Tribe opens a two-game road swing at ODU. It will be the 94th meeting between the two programs, which the Monarchs lead 71-22. W&M has won the last three contests.
	Dec. 21	at Norfolk State Video: Spartan Showcase Video	2 PM	W&M looks to avenge an overtime to Norfolk State last year as the team's meet for the 23rd time. Despite last year's setback, W&M leads the all-time series 14-8.
	<b>DEC. 29</b>	<b>GEORGE WASHINGTON</b> 2 PM Video: TribeAthletics.TV		The Green and Gold plays host to defending A-10 champ George Washington for the first time since 2013. The all-time series is tied 10-10.
	Jan. 4	at Hofstra* Video: CAA.TV	7 PM	W&M looks for just its second win in Hempstead as it opens CAA play on the road for the fourth time in the last five years. Last year, the two teams split the season series.
	Jan. 6	at Northeastern* Video: CAA.TV	2 PM	The Tribe closes its two-game CAA opening road trip at Northeastern. The all-time series is tight at 11-10, but NU leads 8-3 in Boston.
	<b>JAN. 11</b>	<b>UNCW</b> Video: TribeAthletics.TV	<b>7 PM</b>	W&M will look to avenge last year's home loss to Newport News native Karen Barefoot and her Seahawks in the CAA home opener.
	<b>JAN. 13</b>	<b>CHARLESTON</b> Video: TribeAthletics.TV	<b>2 PM</b>	The Tribe hosts Charleston to close out its first home weekend. W&M has won the last two meetings against the Cougars, including a 79-66 victory in Kaplan Arena last year.
	<b>JAN. 20</b>	<b>ELON *</b> 2 PM Video: TribeAthletics.TV		In its lone game of the weekend, W&M hosts back-to-back CAA Champion Elon. The Tribe topped Elon 81-75 at Kaplan Arena last year.
	Jan. 25	at James Madison * Video: CAA.TV	7 PM	W&M opens a two-game road trip as it travels to CAA preseason favorite James Madison. W&M won at the Convo in 2016-17, and lost a tough 70-64 game last year.
	Jan. 27	at Towson* Video: CAA.TV	2 PM	The Tribe heads to SECU Arena looking for its third victory and its last four trips. W&M picked up a 75-63 victory in Maryland last season.
	<b>FEB. 1</b>	<b>DELAWARE*</b> 7 PM Video: TribeAthletics.TV		The Green and Gold opens February as it welcomes Delaware to Kaplan Arena. W&M is looking to snap a two-game skid against the Blue Hens.
	<b>FEB. 3</b>	<b>DREXEL*</b> 2 PM Video: TribeAthletics.TV		W&M plays on its 26th-consecutive Super Bowl Sunday as it welcomes Drexel for the Golden Game. The Tribe is 3-2 under Swanson on Super Sunday.
	Feb. 8	at Charleston* Video: CAA.TV	12 PM	The Tribe opens a season-long three-game road swing with an afternoon game at Charleston. W&M is 3-2 at Charleston since the Cougars joined the league.
	Feb. 10	at UNCW* Video: CAA.TV	2 PM	W&M heads to the Port City to close the weekend. The Tribe has won its last two games against UNCW at Trask Coliseum.
	Feb. 17	at Elon * Video: CAA.TV	1 PM	The Tribe heads to the brand new Schar Center as it closes out the regular season with Elon. The Phoenix have topped W&M in the last two CAA Tournaments.
	<b>FEB. 22</b>	<b>TOWSON*</b> 7 PM Video: TribeAthletics.TV		Towson and W&M close the regular season in Williamsburg this year. The Tigers squeaked out a one-point victory in its last trip to Kaplan Arena.
	<b>FEB. 24</b>	<b>JAMES MADISON*</b> 2 PM Video: TribeAthletics.TV		W&M will raise breast cancer awareness as it welcomes James Madison to Kaplan Arena. The Dukes have won the last two meetings in Kaplan Arena.
	March 1	at Drexel* Video: CAA.TV	7 PM	Drexel and W&M meet for the final time in the regular season when the Tribe travels to Philly. The Dragons are the defending CAA regular season champion.
	March 3	at Delaware* Video: CAA.TV	2 PM	The Tribe heads to the site of the 2019 CAA Tournament when it travels to Delaware. W&M is 3-2 under Ed Swanson at Delaware during his tenure.
	<b>MARCH 7</b>	<b>NORTHEASTERN*</b> 7 PM Video: TribeAthletics.TV		The Green and Gold plays host to Northeastern in its penultimate regular season game. The Tribe has a seven-game winning streak against the Huskies in Williamsburg.
	<b>MARCH 9</b>	<b>HOFSTRA*</b> 2 PM Video: TribeAthletics.TV		W&M closes the regular season with the team it started CAA play against. The Tribe picked up a 63-53 victory over the Pride at Kaplan Arena last year.
	Mar. 13-16	CAA Championship		Delaware hosts the 2019 CAA Tournament at the Bob Carpenter Center in Newark, Del. The event runs from March 13-16.



## GENERAL INFORMATION

**Name:** College of William & Mary  
**Location:** Williamsburg, Va.  
**Founded:** 1693 (2nd oldest college in U.S.)  
**Enrollment** (includes graduate): 8,617  
**Nickname:** Tribe  
**Colors:** Green, Gold and Silver  
**Arena (capacity):** Kaplan Arena (8,600)  
**Affiliation:** NCAA Division I  
**Conference:** Colonial Athletic Association (CAA)  
**President:** Katherine A. Rowe (Carleton, 1984)  
**Chancellor:** Robert M. Gates (William & Mary, 1965)  
**Director of Athletics:** Samantha K. Huge (Gordon, 1992)

## LAST GAME STARTERS

2

## BIANCA BOGGS

Sr. • G • 5-9

Waldorf, Md./St. Mary's Ryken

- Named team captain for the 2018-19 season.
- Earned Preseason First-Team All-CAA honors this season.
- Notched a double-double with 18 points and 10 rebounds at Davidson (11/24).
- Scored a career-high 33 points in a win at St. Francis (12/2/17).
- Ranks 20th in school history with 1,007 career points. Needs 15 points to move into 19th place, while 24 points will move her into 18th place all-time.

10

## EVA HODGSON

Fr. • G • 5-9

Rindge, N.H./New Hampton School

- Made her first career start and scored eight points with three assists against VCU (11/6).
- Scored a career-high 13 points in the win against East Carolina (11/27).
- Grabbed five rebounds in the win against Howard (11/12).
- Handed out a career-high five dimes in the win at Loyola (11/17).
- Her parents and two brothers all played Division III basketball.

11

## NYLA POLLARD

So. • G • 5-9

Virginia Beach, Va./Princess Anne

- Should be a major contributor after being named to the CAA All-Rookie team last year.
- Made her first start of the year & had a double-double (10 pts, 12 reb) vs. ECU (11/27).
- Had nine points and added two rebounds, four assists, and a steal at Loyola (11/17).
- Tabbed back-to-back CAA Rookie of the Week for the week of Dec. 11 and Dec. 18.

25

## GABBY ROGERS

So. • C • 6-1

Dallas, Texas/Bishop Lynch

- Center that has started all five games this season for the Tribe.
- Scored a career-high 10 points and a steal at Davidson (11/24).
- Notched a then-season-high eight points in the win at Loyola (11/17).
- Made her first career start on opening night against VCU (11/6) scoring four points.
- Scored a then career-high nine points in last year's season opener at Howard (11/11/17).

30

## VICTORIA REYNOLDS

Jr. • F • 5-10

Fairfax, Va./Archbishop Spalding

- Started the last 35 games for the Tribe.
- Recorded a double-double with 15 points and 15 rebounds against ECU (11/27/18).
- Had a then-season-high 13 points in the game at Davidson (11/24).
- Scored a career-high 22 points in the win at St. Francis (12/2/17).
- Grabbed 18 boards in the win against Charleston (1/26/18).

## WOMEN'S BASKETBALL INFORMATION

**Head Coach:** Ed Swanson (Sacred Heart, 1989)  
**Record at W&M:** 77-80 (sixth season)  
**Career Record:** 483-344 (29th season)  
**Assistant Coach:** Lynne-Ann Kokoski (Bryant, 2008)  
**Assistant Coach:** Chanel Murchison (William & Mary, 2013)  
**Assistant Coach:** Tierra Rudd (Winston-Salem, 2008)  
**Dir. of Operations:** Michelle Kurowski (UMBC, 2011)  
**2017-18 Record (CAA):** 16-14 (7-11/6th)  
**Starters Returning/Lost:** 3/2  
**Letterwinners Returning/Lost:** 10/4  
**First Year of Basketball:** 1919-20  
**All-Time Record:** 657-956-9  
**WNIT Appearances:** None  
**NCAA Appearances:** None

## TRIBE TRENDS

WILLIAM & MARY RECORD	
Overall.....	3-3
CAA Games.....	0-0
Leads at halftime.....	3-0
Trails at halftime.....	0-2
Tied at Halftime.....	0-1
Home.....	2-1
Away.....	1-2
Neutral.....	0-0

BY MONTH	
November.....	3-3
December.....	0-0
January.....	0-0
February.....	0-0
March.....	0-0

SCORING...	
W&M scores fewer than 40 pts.....	0-0
W&M scores 40-49.....	0-1
W&M scores 50-59.....	0-1
W&M scores 60-69.....	2-1
W&M scores 70-79.....	0-0
W&M scores 80+.....	1-0
Opp. scores fewer than 40 pts.....	0-0
Opp. scores 40-49.....	2-0
Opp. scores 50-59.....	1-1
Opp. scores 60-69.....	0-0
Opp. scores 70-79.....	0-2
Opp. scores 80+.....	0-0

FROM THE FIELD ...	
W&M shoots below 35%.....	0-1
W&M shoots better than 35%.....	3-2
W&M shoots better than 40%.....	2-2
W&M shoots better than 45%.....	1-1
W&M shoots better than 50%.....	1-0

FINAL MARGIN	
1-3 points.....	0-0
4-7 points.....	0-1
8-10 points.....	0-0
11-15 points.....	1-1
16+ points.....	2-1
In Overtime.....	0-0

BATTLE OF THE BOARDS	
Outrebounding opponent.....	2-0
Outrebounded by opponent.....	1-3
Rebounds are even.....	0-0

DOWN TO THE WIRE	
Leading with 5:00 left.....	3-0
Trailing with 5:00 left.....	0-3
Tied with 5:00 left.....	0-0

LAYING IT ON THE LINE...	
W&M attempts more free throws.....	1-1
Opp. attempts more free throws.....	2-2
Free Throws are even.....	0-0

JERSEY COLOR	
White.....	2-1
Green.....	1-2
Gold.....	0-0
Pink.....	0-0

STRENGTH OF OPPOSITION	
vs. Top 25 teams.....	0-0
vs. teams with a winning record.....	2-0
vs. teams .500 record.....	0-0
vs. teams with a losing record.....	1-2

STREAKING	
Coming off of a win.....	1-2
Coming off of a loss.....	2-0
Longest Winning Streak.....	W2
Longest Losing Streak.....	L1
Current Streak.....	L1

## RESERVES

POS. NO.	NAME	HT.	CL.	G-GS	PPG	RPG	APG	FG%	3P%	FT%	MISC.
G 0	Libby Underwood	5-9	So.	5-0	1.2	0.2	0.2	.429	.000	-	1 blk

NOTE: Scored six points in the second half of the game versus VCU (11/6).

G 1	Sydney Wagner	5-6	So.	-	-	-	-	-	-	-	-
-----	---------------	-----	-----	---	---	---	---	---	---	---	---

NOTE: Transfer from Stetson that has to sit out the 2018-19 season due to NCAA Transfer Rule

G 3	Ashley Taylor	5-8	Jr.	1-0	0.0	0.0	0.0	-	-	-	-
-----	---------------	-----	-----	-----	-----	-----	-----	---	---	---	---

NOTE: Has appeared in 21 career games in career.

G/F 5	Misha Jones	5-9	Jr.	6-0	4.0	2.0	1.2	.471	.385	.750	2 blk
-------	-------------	-----	-----	-----	-----	-----	-----	------	------	------	-------

NOTE: Team captain, who scored a career-high nine points against Howard (11/12).

G 12	Harper Birdsong	5-10	R-So.	6-4	8.2	0.7	0.8	.415	.391	.500	4 stl
------	-----------------	------	-------	-----	-----	-----	-----	------	------	------	-------

NOTE: Been in double-figures in three of the last five, including a career-high 12 vs. HU (11/12).

F 15	Emma Krause	6-2	Fr.	6-0	6.7	3.2	1.0	.394	.458	.500	4 blk
------	-------------	-----	-----	-----	-----	-----	-----	------	------	------	-------

NOTE: Third on the team in scoring; Had a career-high 14 points in the win against HU (11/12).

C 20	Chandler Smith	6-3	Sr.	4-0	0.3	1.8	0.0	.000	-	.500	2 blk
------	----------------	-----	-----	-----	-----	-----	-----	------	---	------	-------

NOTE: Named a team captain for 18-19; Reserve post that has appeared in 57 career games.

G/F 21	Bailey Eichner	6-1	Fr.	3-0	0.3	0.3	0.0	.000	.000	.500	-
--------	----------------	-----	-----	-----	-----	-----	-----	------	------	------	---

NOTE: Scored a career-high four-points and grabbed a career-high five boards vs. JMU (2/2)

C 32	Caroline Stover	6-3	Fr.	1-0	0.0	0.0	0.0	.000	.000	.000	-
------	-----------------	-----	-----	-----	-----	-----	-----	------	------	------	---

NOTE: Ranked as the No. 131 recruit in her class on BlueStar

## W&amp;M INDIVIDUAL SUPERLATIVES

Double-Digit Games	16-17	17-18	18-19	Career	10-Assist Games	16-17	17-18	18-19	Career
Bianca Boggs	8	25	5	47	Bianca Boggs	-	1	1	3
Victoria Reynolds	4	15	4	23	Victoria Reynolds	-	1	1	2
Nyla Pollard	-	3	1	4	Nyla Pollard	-	-	1	1
Harper Birdsong	-	-	3	3					
Eva Hodgson	-	-	2	2					
Emma Krause	-	-	1	1					
Gabby Rogers	-	-	1	1					

Leading Scorer (times): - Boggs (4), Hodgson (1), Reynolds (1)

Leading Rebounder (times): - Boggs (3), Reynolds (3)

Leading Assists (times): - Boggs (4), Hodgson (2), Pollard (1), Reynolds (1)

Charges (times): - Rogers (3), Jones (2), Birdsong (1)

Three-Point Plays (Made/Attempted): - Boggs (7/7), Jones (1/1), Reynolds (1/1) Pollard (0/2)

Four-Point Plays (Made/Attempted): - Jones (1/1)



Team

<b>W&amp;M scored 80+ points</b>	<b>11/12/2018</b>	<b>88 (88-75, W vs. Howard)</b>
<b>W&amp;M scored 85+ points</b>	<b>11/12/2018</b>	<b>88 (88-75, W vs. Howard)</b>
W&M scored 90+ points	12/2/2017	92 (92-86, W at St. Francis (Pa.))
W&M scored 95+ points	2/16/2014	97 (97-44 W, vs. UNCW)
Opponent scored 80+	3/1/2018	82 (61-82, L at Elon)
Opponent scored 85+	2/2/2017	86 (41-86, L vs. James Madison)
Opponent scored 90+	11/17/2017	92 (92-81 L, at St. John's)
<b>W&amp;M grabbed 50+ rebounds</b>	<b>11/27/2018</b>	<b>58 (63-43 W, vs. East Carolina)</b>
W&M grabbed 60+ rebounds	12/21/2006	60 (73-58 W, at Norfolk State)
<b>Held an Opponent to 50 pts. or less</b>	<b>11/30/2018</b>	<b>50 (45-50 L, at Hartford)</b>
Held an Opponent to 40 pts. or less	12/3/2016	39 (67-39, W vs. Richmond)
<b>W&amp;M was held under 50 pts.</b>	<b>11/30/2018</b>	<b>45 (45-50 L, at Hartford)</b>
<b>Shot 50% from the field</b>	<b>11/17/2018</b>	<b>51.0% (26-for-51) (65-49, W at Loyola)</b>
<b>Shot 80-89% from the foul line (8 or more attempts)</b>	<b>11/24/2018</b>	<b>82.6% (19-for-23) (63-43 W vs. Davidson)</b>
Shot 90-99% from the foul line (8 or more attempts)	2/9/2018	90.0 (9-for-10) (59-68, L at Delaware)
Shot 100% from the foul line (8 or more attempts)	2/28/2016	100.0% (8-8) (53-69 L, at Drexel)
<b>Had a 20-pt. win</b>	<b>11/27/2018</b>	<b>20 (63-43 W, vs. East Carolina)</b>
Had a 30-pt. win	11/28/2016	34 (W, 82-48 vs. Delaware State)
Had a 40-pt. win	2/16/2014	53 (97-44 W, vs. UNCW)
Had a 50-pt. win	2/16/2014	53 (97-44 W, vs. UNCW)
Had a 20-pt. loss	3/1/2018	21 (L, 61-82 at Elon)
Had a 30-pt. loss	2/2/2018	45 (L, 41-86 vs. James Madison)
An overtime win	11/21/2017	71-65, W at East Carolina
An overtime loss	1/9/2018	58-65, L vs. Drexel
A double-overtime game	2/6/2015	72-68, W at Drexel
A triple-overtime game	11/29/1999	77-83, L at VCU
10-game winning streak	2016-17	11 (11/18/2016-1/6/17)
5-game winning streak	2017-18	7 (11/21/2017-12/21/2017)
5-game losing streak	2017-18	7 (2/16/2018-11/12/2018)
10-game losing streak	2012-13	11 (11/25/2012-1/20/2013)

Individual

20-24 pts.	20, Nari Garner at James Madison, 3/3/18
<b>25-29 pts.</b>	<b>26, Bianca Boggs vs. Howard, 11/12/18</b>
30-34 pts.	33, Bianca Boggs at St. Francis (Pa.), 12/2/17
35-39 pts.	39, Lynn Norenberg at Virginia Wesleyan, 11/15/80
40+ pts.	53, Bebe Fisher vs. Norfolk Division, 2/13/52
5 players in double figures	Bianca Boggs (26), Victoria Reynolds (15), Abby Rendle (12), Nari Garner (11), Jenna Green (10) vs. College of Charleston, 1/26/18
Two players with 20 pts. or more	Jenna Green (22) and Bianca Boggs (21) at Towson, 2/4/18
<b>Player with 10-14 rebounds</b>	<b>12, Nyla Pollard &amp; 11, Bianca Boggs vs. East Carolina, 11/27/18</b>
<b>Player with 15-19 rebounds</b>	<b>15, Victoria Reynolds vs. East Carolina, 11/27/18</b>
Player with 20 or more rebounds	21, Emily Correal vs. George Mason, 3/16/13
<b>Two players with 10 or more rebounds</b>	<b>15, Victoria Reynolds, 12, Nyla Pollard, &amp; 11 Bianca Boggs vs. ECU, 11/27/18</b>
A player with a triple-double	Abby Rendle (25 pts, 17 reb, 10 blks) at East Carolina, 11/21/17
<b>A player with a double-double</b>	<b>Victoria Reynolds (15 pts, 15 reb) &amp; Nyla Pollard (10 pts, 12 reb.) vs. ECU, 11/27/18</b>
<b>Two players with double-doubles</b>	<b>Victoria Reynolds (15 pts, 15 reb) &amp; Nyla Pollard (10 pts, 12 reb.) vs. ECU, 11/27/18</b>
100% from the field (min. 5 made)	7-for-7, Abby Rendle vs. Drexel, 3/1/17
<b>100% from foul line (min. 5 made)</b>	<b>6-for-6, Victoria Reynolds vs. East Carolina, 11/27/18</b>
<b>5-7 Assists</b>	<b>5, Bianca Boggs vs. East Carolina, 11/27/18</b>
8-9 Assists	8, Bianca Boggs at Delaware, 2/9/18
10+ Assists	11, Jenna Green vs. College of Charleston, 1/26/18
<b>5 or more steals</b>	<b>6, Bianca Boggs at Hartford, 11/30/18</b>
5-9 blocks	6, Abby Rendle at Delaware, 2/9/18
10+ blocks	11, Abby Rendle vs. College of Charleston, 1/26/18

BOLD - Happened in the 2018-19 season

**LIBBY UNDERWOOD**

So. • Guard • 5-9  
Rye, New Hampshire

**SYDNEY WAGNER**

So. • Guard • 5-6  
Phoenixville, Pa.

**BIANCA BOGGS**

Sr. • Guard • 5-5  
Waldorf, Md.

**ASHLEY TAYLOR**

Jr. • Guard • 6-0  
Charlottesville, Va.

**MISHA JONES**

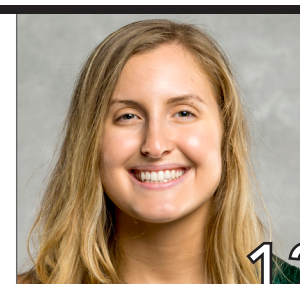
Sr. • Guard/Forward • 5-9  
Manassas Park, Va.

**EVA HODGSON**

Fr. • Guard • 5-9  
Rindge, New Hampshire

**NYLA POLLARD**

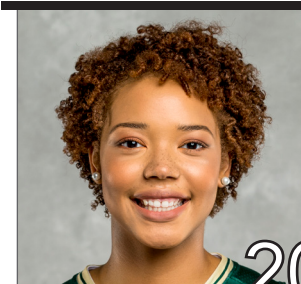
So. • Guard • 5-9  
Virginia Beach, Va.

**HARPER BIRDSONG**

R-So. • Guard • 5-10  
Suffolk, Va.

**EMMA KRUSE**

Jr. • Center • 6-3  
Port Tobacco, Md.

**CHANDLER SMITH**

Sr. • Center • 6-3  
Port Tobacco, Md.

**BAILEY EICHNER**

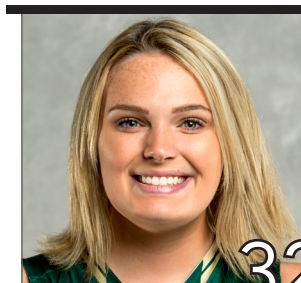
So. • Guard/Forward • 6-1  
Cudahy, Wisc.

**GABBY ROGERS**

Fr. • Center • 6-1  
Dallas, Texas

**VICTORIA REYNOLDS**

Jr. • Forward • 5-10  
Fairfax, Va.

**CAROLINE STOVER**

Fr. • Center • 6-3  
Plymton Mass.

**ED SWANSON**

Sixth Season at W&M  
29th Overall

**PRONUNCIATION GUIDE**

Bailey **EICHNER** IKE-ner

Lynne **KOKOSKI**  
Kah-kaw-ski

**CHANEL** Murchison Shh-nell





ED

SWANSON

## HEAD COACH

29<sup>TH</sup> SEASON OVERALL

6<sup>TH</sup> SEASON AT W&M

## PROFILE

Wife: Marion

Children: Connor and Matthew

### Education

Sacred Heart, 1989

### Coaching Career

Sacred Heart (1989-13)

William &amp; Mary (2013-P)

## CAREER HIGHLIGHTS

- Three NCAA Tournament Appearances
- Led W&M to 1st Division I Postseason berth in the WBI.
- Led W&M to a school record 20 wins in 2016-17
- 2016-17 VaSID Coach of the Year
- Six Postseason Appearances
- Four regular season conference championships and three postseason league titles
- 2009 New England Hall of Fame Inductee
- Eight 20-win seasons
- Five-time Conference Coach of the Year
- On five occasions, his teams have earned to the WBCA Academic Top 25 Team Honor

Ed Swanson enters his sixth season with the Green and Gold. He became the fifth Division I head women's basketball coach in William and Mary history on May 7, 2013. Prior to coming to Williamsburg, he spent 23 years transforming Sacred Heart University from a Division II program into a one of the top teams in the Northeast Conference. Swanson owns a career record of 464-327 (.587).

The success continued for the Tribe during the 2017-18 season. W&M won 16 games, which is tied for the fourth most in school history, and posted its second straight winning season for the first time since 2005-06 and 2006-07. His first recruiting class became the winningest class in school history with the team's victory over College of Charleston on Jan. 26. The seniors went onto win 66 games during their four year career. The Tribe raced out to an 11-2 start for the third straight season, which equaled the best 13-game start in school history, and led the CAA in blocked shots (218) and blocked shots per game (7.3), which ranked fourth and third in the NCAA, respectively. Both numbers are single-season school records. Individually, he mentored three players to five All-CAA awards, including All-CAA First-Team selection Bianca Boggs, who became the first Tribe player in a decade to be named to the league's first-team. Additionally, Boggs was named to the league's all-defensive team, while Abby Rendle claimed a spot on the All-CAA Third-Team, and All-Defensive Team, and freshman Nyla Pollard was picked to the CAA All-Rookie team.

Swanson led the Tribe to one of its best seasons in program history in 2016-17. The Tribe tied a school record with 20 wins, while winning a CAA Tournament game for the first time since 2009, and advancing to the CAA Semifinals for the first-time since 2001. Under his leadership, the Tribe won 11-straight games, which is the longest single-23056season streak in school history, from Nov. 18, 2016-Jan. 2, 2017. W&M had four players claim seven all-conference awards this season, including seniors Alexandra Masaquel and Marlena Tremba, who each earned second-team citations. Additionally, Masaquel was tabbed the Richmond Times-Dispatch All-State Second-Team, while Tremba earned VaSID All-State Second-Team honors. For his efforts, VaSID honored him as the Virginia State Coach of the Year.

Once again Swanson's third season was one for the record books. The Tribe raced out to its best start in school history with an 11-2 record. W&M went onto again to win the fourth most wins in school history with 15. For the second straight season the Tribe broke the blocks and assist record, by tying the single season assist record (466) and broke the school record for blocks with 148. During the season junior Marlena Tremba became the 15th player in school history to break the 1000-point barrier. Individually, four players earned All-CAA awards as junior Alexandra Masaquel was tabbed to the second-team and all-defensive team, Tremba earned third-team honors, and freshman Bianca Boggs picked up a spot on the all-rookie team. The Tribe was also rewarded for its hard work in the classroom as Masaquel, Tremba, and sophomore Jenna Green earned all-academic team honors.

Swanson's second year with the Green and Gold was one for the record books. The Tribe racked up 15 wins, the fourth-most in school history, on its way to its first-ever postseason appearances with bid in the Women's Basketball Invitational. The Green and Gold had a seven-win turnaround, while setting three school records for assists (466), blocked shots, (143), blocked shots per game (4.5). Individually he helped lead four players to five All-CAA awards. Sophomore Marlena Tremba was named to the All-CAA Third-Team, senior Jazmen Boone was named to the All-Defensive Team, freshman Abby Rendle to the All-Rookie and All-Defensive team, and senior Kyla Kerstetter earned all-academic honors.

In his first season with the Tribe, Swanson led a young team to eight victories in a seven-seed in the CAA Tournament. The Green and Gold finished in the top 10 nationally in steals per game, while Jazmen Boone also ranked in the top 20 in the NCAA in the same category. Under his guidance Kaitlyn Mathieu garnered Third-Team All-Colonial Athletic Association honors, and went on to sign a professional contract with a team in Germany. In addition, guard Marlena Tremba went onto win CAA Rookie of the Year, and was named to the all-rookie squad. Boone was named to the all-defensive team, while she and Kyla Kerstetter took home all-academic honors.

Swanson oversaw Sacred Heart's transition from Division II to Division I in 1999-00, and the program took off under his direction. Over Sacred Heart's 14 years in Division I, Swanson led SHU



to a 280-145 record (.664), including a 190-62 (.754) record in the NEC. He departed as the NEC's all-time winningest head coach with all of his SHU teams finishing third or higher in the league standings. Swanson-lead teams have posted 13 straight winning seasons and 12 straight campaigns with 18 or more victories, including six with 20 or more wins. In 2009, he was inducted into the New England Basketball Hall of Fame.

In total, Swanson-coached players earned 19 All-NEC honors, including nine first-team awards, nine NEC All-Tournament Team honors, eight NEC All-Rookie Team selections, four NEC Rookies of the Year, three NEC Tournament MVPs and three NEC Players of the Year.

His teams have also enjoyed success in the classroom. On five occasions, the Pioneers were selected to the Women's Basketball Coaches Association (WBCA) Academic Top 25 Team Honor Roll, which has recognized outstanding academic performances from the top teams in each of the five collegiate divisions since 1995-96. On eight occasions since 2003, one of his players was a CoSIDA Academic All-District selection and two Pioneer players were named NEC Scholar-Athlete of the Year.

In 2012-13, Swanson led Sacred Heart to its third straight postseason appearance, and in the process, recorded his 400th career victory. His milestone win came on Feb. 12, 2013 as the Pioneers defeated Fairleigh Dickinson. SHU completed the season at 22-11, finishing second in the NEC with a 13-5 ledger and garnering a berth in the program's first Women's National Invitational Tournament (WNIT).

Sacred Heart claimed its third NEC Championship and advanced to the NCAA Tournament in 2011-12. The Pioneers also ranked 23rd nationally in the WBCA Academic Top 25 Team Honor Roll with a team GPA of 3.35. SHU compiled a season mark to 25-8, winning both the regular season and postseason crowns in the league as Swanson was named NEC Coach of the Year for the fourth time.

The Pioneers earned a berth in the 2011 Women's Basketball Invitational and finished the year at 18-13 with a 12-6 mark in the NEC. After a 0-5 start to the 2008-09 season, Swanson's Pioneers reeled off a 21-game winning streak, the longest in school history and second longest in the country, before finishing with 25-8 record. SHU completed the NEC regular season with a perfect 18-0 mark, becoming just the third team in the history of the conference to accomplish the feat. Swanson earned NEC Coach of the Year honors as Sacred Heart finished off an amazing season by capturing its second league title and trip to the NCAA Tournament over a four-year span. During the 2008-09 season, Swanson moved past former Mount St. Mary's head coach Bill Sheahan (124) as all-time leader in Northeast Conference wins and eclipsing the 300-win plateau in his career.

The 2005-06 season saw Swanson lead the Sacred Heart program to its first NCAA Tournament, capturing the NEC Championship in just its seventh season at the Division I level. Swanson guided the Pioneers to a school record 26-5 record, including a 16-2 NEC ledger. He also garnered career victory No. 250 during the season.

Under his leadership, Sacred Heart was one of the toughest teams on its home court, the William H. Pitt Center, which opened in 1997. During the Pitt Center's opening 16 seasons, Swanson's teams won 81.9 percent (185-41) of its home games. In 2011-12, SHU went 15-1 at home, a season bested only by a perfect 15-0 in 2005-06 and 14-0 in 2003-04. During the stretch, the Pioneers' home winning percentage at the Pitt Center ranked among the best nationally.

After directing the Pioneers to a 20-7 record — the program's first 20-win season — in 1995-96, Swanson was voted Coach of the Year in the New England Collegiate Conference (NECC) and the Women's Basketball Coaches Association's (WBCA) District I.

Swanson took the reins of the Sacred Heart University women's basketball program in 1990 and built the Pioneers into one of the top teams in the Northeast. He joined Dave Bike's men's basketball coaching staff at SHU in 1989, and, after becoming head coach of the Pioneer women's program in 1990, did double duty for three seasons before becoming the University's first full-time women's coach in 1993. Prior to Swanson's arrival,

## CAREER RECORD

YEAR	OVERALL RECORD	CONF. RECORD	CONF. FINISH	POST SEASON
1990-91	8-19	3-11	7th	
1991-92	11-16	5-9	T5th	
1992-93	16-13	7-7	4th	
1993-94	12-15	8-8	5th	
1994-95	11-16	7-9	5th	
1995-96	20-7	16-4	T2nd	
1996-97	14-14	10-8	5th	
1997-98	19-7	13-3	2nd	
1998-99	15-12	12-6	3rd	
1999-00	14-14	11-7	T3rd	
2000-01	15-14	11-7	T3rd	
2001-02	18-11	13-5	T2nd	
2002-03	18-10	12-6	T3rd	
2003-04	21-8	14-4	2nd	
2004-05	18-11	14-4	2nd	
2005-06	26-5	16-2	1st	NCAA
2006-07	22-10	15-3	T1st	
2007-08	19-11	14-4	3rd	
2008-09	25-8	18-0	1st	NCAA
2009-10	19-11	14-4	3rd	
2010-11	18-13	12-6	T3rd	WBI
2011-12	25-8	15-3	1st	NCAA
2012-13	22-11	13-5	2nd	WNIT
2013-14	8-21	5-11	8th	
2014-15	15-16	9-9	6th	WBI
2015-16	15-15	6-12	7th	
2016-17	20-11	9-9	4th	
2017-18	16-14	7-11	6th	
2018-19	3-3	0-0		
<b>Career</b>	<b>483-344</b> (.584)	<b>292-179</b> (.620)		
<b>Division I</b>	<b>357-225</b> (.613)	<b>227-114</b> (.666)		
<b>W&amp;M/CAA</b>	<b>77-80</b> (.490)	<b>36-52</b> (.409)		

the Sacred Heart women's team compiled a 4-21 record. Under his guidance, the climb to Division II respectability was accomplished within three seasons, from 8-19 to 11-16 and, in 1992-93, to 16-13 — the program's first winning record in 11 seasons.

In his time at SHU, he was a four-time NEC Coach of the Year, led Sacred Heart to five postseason bids, including three NCAA Tournament appearances. Swanson guided the Pioneers to four NEC regular season crowns and three NEC tournament championships. SHU posted 20-win seasons seven times during his tenure, including five of the last eight years.

He earned a bachelor's degree in business from Sacred Heart in 1989. Also during his tenure at SHU, Swanson served as the moderator for the Pioneer Student-Athlete Council from 1998-01 and was the annual coordinator of commencement exercises since 2000. Swanson and his wife, Marion, have two sons, Connor and Matthew.



# #0 LIBBY UNDERWOOD

## SOPHOMORE - GUARD

### RYE, N.H. - PORTSMOUTH

#### >> UNDERWOOD'S CAREER HIGHS

##### MINUTES

Season 13 vs. VCU, 11/6/18  
Career 15 vs. USC Upstate, 12/5/17

##### POINTS

Season 6 vs. VCU, 11/6/18  
Career 8 vs. USC Upstate, 12/5/17

##### REBOUNDS

Season 1 vs. Howard, 11/12/18  
Career 3 at Northeastern, 1/21/18

##### FIELD GOALS

Season 3 vs. VCU, 11/6/18  
Career 3 vs. VCU, 11/6/18

##### 3-POINT FIELD GOALS

Season -  
Career 1 (3x) last time vs. Upstate 12/5/17

##### FREE THROWS

Season -  
Career 5 vs. USC Upstate, 12/5/17

##### ASSISTS

Season 1 vs. VCU, 11/6/18  
Career 3 vs. USC Upstate, 12/5/17

##### STEALS

Season -  
Career 1 (2x) last time at UNCW, 12/31/17

##### BLOCKS

Season 1 vs. VCU, 11/6/18  
Career 1 vs. VCU, 11/6/18

##### MISCELLANEOUS

Career in Double Figures 0  
2018-19 in Double Figures 0

#### > 2018-19 GAME-BY-GAME

Opp	Date	GS	Min	FG-A	3FG-A	FT-A	Reb.	A	TO	BLK	STL	PTS
VCU	11/6	14	3-4	0-1	0-0	0	1	1	0	1	6	
HOW	11/12	2	0-1	0-0	0-0	1	0	0	0	0	0	
at Loy	11/17	11	0-1	0-0	0-0	0	0	0	0	0	0	
at DC	11/24	6	0-1	0-1	0-0	0	0	0	0	0	0	
ECU	11/27	DID NOT PLAY - COACH'S DECISION										
at Hart	11/30	2	0-0	0-0	0-0	0	0	0	0	0	0	

#### >> UNDERWOOD'S CAREER STATISTICS

Season	GP	GS	Min/Avg	FG-FGA	Pct	3pt-Att	Pct	FT-FTA	Pct	Off	Def	Reb	Avg	PF	FO	A	TO	Blk	S	TP	Avg
2017-18	27	0	162/6.0	6-30	.200	3-15	.200	14-22	.636	2	14	16	0.6	10	0	8	21	0	2	29	1.1
2018-19	5	0	34/6.8	3-7	.429	0-2	.000	0-0	.000	1	0	1	0.2	1	0	1	1	1	0	6	1.2
<b>CAREER</b>	<b>32</b>	<b>0</b>	<b>196/6.1</b>	<b>9-37</b>	<b>.243</b>	<b>3-17</b>	<b>.176</b>	<b>14-22</b>	<b>.636</b>	<b>3</b>	<b>14</b>	<b>17</b>	<b>0.5</b>	<b>11</b>	<b>0</b>	<b>9</b>	<b>22</b>	<b>1</b>	<b>2</b>	<b>35</b>	<b>1.1</b>



# #2 BIANCA BOGGS

## SENIOR - GUARD

### WALDORF, MD. - ST. MARY'S RYKEN

#### >> BOGGS' CAREER HIGHS

##### MINUTES

Season 39 at Hartford, 11/30/18  
Career 41 at East Carolina, 11/21/17

##### POINTS

Season 26 vs. Howard, 11/12/18  
Career 33 at St. Francis (Pa.), 12/2/17

##### REBOUNDS

Season 11 vs. East Carolina, 11/27/18  
Career 11 (2x) last time at ECU, 11/27/18

##### FIELD GOALS

Season 10 vs. Howard, 11/12/18  
Career 12 at St. Francis (Pa.), 12/2/17

##### 3-POINT FIELD GOALS

Season 2 at Loyola, 11/14/18  
Career 4 (2x) last time vs. NU, 2/11/18

##### FREE THROWS

Season 5 (3x) last time at Hart., 11/30/18  
Career 8 (2x) last time vs. UD, 2/23/18

##### ASSISTS

Season 7 (2x) last time at DC, 11/24/18  
Career 8 at Delaware, 2/9/18

##### STEALS

Season 6 at Hartford, 11/30/18  
Career 7 vs. Charleston, 1/26/18

##### BLOCKS

Season 2 at Davidson, 11/24/18  
Career 4 vs. Hofstra, 1/28/18

##### MISCELLANEOUS

Career in Double Figures 47  
2018-19 in Double Figures 5

#### >> 2018-19 GAME-BY-GAME

Opp	Date	GS	Min	FG-A	3FG-A	FT-A	Reb.	A	TO	BLK	STL	PTS
VCU	11/6	*	34	6-16	1-3	2-3	6	4	3	1	5	16
HOW	11/12	*	35	10-22	1-5	5-5	9	7	4	0	1	26
at Loy	11/17	*	35	5-9	2-4	2-2	5	3	1	0	0	14
at DC	11/24	*	36	6-12	1-3	5-5	10	7	9	2	3	18
ECU	11/27	*	37	4-11	0-3	1-2	11	5	6	1	1	9
at Hart	11/30	*	39	3-15	1-5	5-6	6	2	4	0	6	12

#### >> BOGGS' CAREER STATISTICS

Season	GP	GS	Min/Avg	FG-FGA	Pct	3pt-Att	Pct	FT-FTA	Pct	Off	Def	Reb	Avg	PF	FO	A	TO	Blk	S	TP	Avg
2015-16	30	24	802/26.7	68-233	.292	17-56	.304	70-102	.686	38	57	95	3.2	81	5	45	55	10	56	223	7.4
2016-17	31	26	734/23.7	82-214	.383	22-74	.297	60-76	.789	44	65	109	3.5	60	0	60	76	17	54	246	7.9
2017-18	30	30	907/30.2	156-373	.418	41-129	.318	103-139	.741	46	91	137	4.6	85	1	88	111	24	65	456	15.2
2018-19	6	6	217/36.2	34-85	.400	6-23	.261	20-23	.870	7	40	47	7.8	11	0	28	27	4	16	94	15.7
<b>CAREER</b>	<b>97</b>	<b>86</b>	<b>2660/27.4</b>	<b>340-905</b>	<b>.376</b>	<b>86-282</b>	<b>.305</b>	<b>253-340</b>	<b>.744</b>	<b>135</b>	<b>253</b>	<b>388</b>	<b>4.0</b>	<b>237</b>	<b>8</b>	<b>221</b>	<b>269</b>	<b>55</b>	<b>191</b>	<b>1019</b>	<b>10.5</b>





# #3 ASHLEY TAYLOR

## JUNIOR - GUARD

CHARLOTTESVILLE, VA. - ST. ANNE'S-BELFIELD

### >> TAYLOR'S CAREER HIGHS

<b>MINUTES</b>		<b>FREE THROWS</b>	
Season	1 at Loyola, 11/14/18	Season	-
Career	9 vs. USC Upstate, 12/5/17	Career	-
<b>POINTS</b>		<b>ASSISTS</b>	
Season	-	Season	-
Career	3 vs. USC Upstate, 12/5/17	Career	1 (4x) last time at CofC, 12/29/17
<b>REBOUNDS</b>		<b>STEALS</b>	
Season	-	Season	-
Career	2 vs. Loyola, 11/25/17	Career	1 vs. Davidson, 11/27/17
<b>FIELD GOALS</b>		<b>BLOCKS</b>	
Season	-	Season	-
Career	1 (2x) last time at Elon, 3/1/18	Career	-
<b>3-POINT FIELD GOALS</b>		<b>MISCELLANEOUS</b>	
Season	-	Career in Double Figures	0
Career	1 vs. USC Upstate, 12/5/17	2018-19 in Double Figures	0

### >> TAYLOR'S CAREER STATISTICS

Season	GP	GS	Min/Avg	FG-FGA	Pct	3pt-Att	Pct	FT-FTA	Pct	Off	Def	Reb	Avg	PF	FO	A	TO	Blk	S	TP	Avg
2016-17	7	0	22/3.1	0-6	.000	0-4	.000	0-0	.000	1	2	3	0.4	0	0	2	1	0	0	0	0.0
2017-18	13	0	32/2.5	2-9	.222	1-3	.333	0-0	.000	0	7	7	0.5	1	0	2	4	0	1	5	0.4
2018-19	1	0	1/1.0	0-0	.000	0-0	.000	0-0	.000	0	0	0	0.0	0	0	0	0	0	0	0	0.0
<b>CAREER</b>	<b>21</b>	<b>0</b>	<b>55/2.6</b>	<b>2-15</b>	<b>.133</b>	<b>1-7</b>	<b>.000</b>	<b>0-0</b>	<b>.000</b>	<b>1</b>	<b>9</b>	<b>10</b>	<b>0.5</b>	<b>1</b>	<b>0</b>	<b>4</b>	<b>5</b>	<b>0</b>	<b>1</b>	<b>5</b>	<b>0.2</b>

### >> 2018-19 GAME-BY-GAME

Opp	Date	GS	Min	FG-A	3FG-A	FT-A	Reb.	A	TO	BLK	STL	Pts
VCU	11/6			DNP	-	COACH'S DECISION						
HOW	11/12			DNP	-	COACH'S DECISION						
at Loy	11/17	1	0-0	0-0	0-0	0	0	0	0	0	0	0
at DC	11/24			DNP	-	COACH'S DECISION						
ECU	11/27			DNP	-	COACH'S DECISION						
at Hart	11/30			DNP	-	COACH'S DECISION						



# #5 MISHA JONES

## SENIOR - GUARD/FORWARD

MANASSAS PARK, VA. - BATTLEFIELD

### >> JONES' CAREER HIGHS

<b>MINUTES</b>		<b>FREE THROWS</b>	
Season	14 vs. Howard, 11/12/18	Season	1 (2x) last time vs. HU, 11/12/18
Career	27 vs. Delaware, 2/23/18	Career	3 (2x) last time vs. USC Upstate, 12/5/17
<b>POINTS</b>		<b>ASSISTS</b>	
Season	9 vs. Howard, 11/12/18	Season	3 at Davidson, 11/24/18
Career	9 vs. Howard, 11/12/18	Career	4 (2x) last time vs. UD, 2/23/18
<b>REBOUNDS</b>		<b>STEALS</b>	
Season	4 at Hartford, 11/30/18	Season	-
Career	5 (2x) last time vs. UD, 2/23/18	Career	2 at Howard, 11/11/17
<b>FIELD GOALS</b>		<b>BLOCKS</b>	
Season	3 vs. Howard, 11/12/18	Season	1 (2x) last time at DC, 11/24/18
Career	3 vs. Howard, 11/12/18	Career	1 (2x) last time vs. HU, 11/12/18
<b>3-POINT FIELD GOALS</b>		<b>MISCELLANEOUS</b>	
Season	2 vs. Howard, 11/12/18	Career in Double Figures	0
Career	2 (3x) last time vs. HU, 11/12/18	2018-19 in Double Figures	0

### >> 2018-19 GAME-BY-GAME

Opp	Date	GS	Min	FG-A	3FG-A	FT-A	Reb.	A	TO	BLK	STL	Pts
VCU	11/6	4	1-1	1-1	1-2	4	0	0	0	0	4	
HOW	11/12	14	3-5	2-4	1-1	3	2	2	1	0	9	
at Loy	11/17	13	2-4	0-2	1-2	2	1	0	0	0	5	
at DC	11/24	11	1-2	1-2	0-0	1	3	1	1	0	3	
ECU	11/27	9	0-3	0-3	0-0	2	0	0	0	0	0	
at Hart	11/30	12	1-2	1-1	0-0	4	1	0	0	0	3	

### >> JONES' CAREER STATISTICS

Season	GP	GS	Min/Avg	FG-FGA	Pct	3pt-Att	Pct	FT-FTA	Pct	Off	Def	Reb	Avg	PF	FO	A	TO	Blk	S	TP	Avg
2015-16	27	0	180/6.7	12-36	.333	5-20	.250	7-10	.700	1	16	17	0.6	15	0	8	9	0	4	36	1.3
2016-17																					
2017-18	28	0	201/7.2	13-41	.317	7-26	.269	10-11	.909	6	26	32	1.1	29	0	15	17	1	7	43	1.5
2018-19	6	0	64/10.7	8-17	.471	5-13	.384	3-4	.750	6	6	12	2.0	10	0	7	3	2	0	24	4.0
<b>CAREER</b>	<b>61</b>	<b>0</b>	<b>445/7.3</b>	<b>33-94</b>	<b>.351</b>	<b>17-59</b>	<b>.288</b>	<b>20-25</b>	<b>.800</b>	<b>13</b>	<b>48</b>	<b>61</b>	<b>1.0</b>	<b>54</b>	<b>0</b>	<b>30</b>	<b>29</b>	<b>3</b>	<b>11</b>	<b>103</b>	<b>1.7</b>



# #10 EVA HODGSON

FRESHMAN - GUARD

RINDGE, N.H. - NEW HAMPTON SCHOOL

## >> HODGSON'S CAREER HIGHS

### MINUTES

Season	35	vs. Howard, 11/12/18
Career	35	vs. VCU, 11/6/18

### POINTS

Season	14	at Hartford, 11/30/18
Career	14	at Hartford, 11/30/18

### REBOUNDS

Season	5	vs. Howard, 11/12/18
Career	5	vs. Howard, 11/12/18

### FIELD GOALS

Season	4	(3x) last time at Hart, 11/30/18
Career	4	(3x) last time at Hart, 11/30/18

### 3-POINT FIELD GOALS

Season	2	vs. East Carolina, 11/27/18
Career	2	vs. East Carolina, 11/27/18

### FREE THROWS

Season	5	at Hartford, 11/30/18
Career	5	at Hartford, 11/30/18

### ASSISTS

Season	5	at Loyola, 11/14/18
Career	5	at Loyola, 11/14/18

### STEALS

Season	3	at Hartford, 11/30/18
Career	3	at Hartford, 11/30/18

### BLOCKS

Season	1	at Loyola, 11/14/18
Career	1	at Loyola, 11/14/18

### MISCELLANEOUS

Career in Double Figures	2
2018-19 in Double Figures	2

## > 2018-19 GAME-BY-GAME

Opp	Date	GS	Min	FG-A	3FG-A	FT-A	Reb.	A	TO	BLK	STL	Pts
VCU	11/6	*	28	4-8	0-2	0-0	0	3	2	0	2	8
HOW	11/12	*	35	2-6	1-3	1-2	5	4	4	0	2	6
at Loy	11/17	*	30	2-7	0-1	1-1	2	5	2	1	1	5
at DC	11/24	*	30	0-4	0-1	0-0	3	2	4	0	0	0
ECU	11/27	*	26	4-4	2-2	3-4	1	0	2	1	0	13
at Hart	11/30	*	34	4-12	1-5	5-7	2	2	4	0	3	14

## >> HODGSON'S CAREER STATISTICS

Season	GP	GS	Min/Avg	FG-FGA	Pct	3pt-Att	Pct	FT-FTA	Pct	Off	Def	Reb	Avg	PF	FO	A	TO	Blk	S	TP	Avg
2018-19	6	6	182/30.3	16-41	.390	4-14	.286	10-15	.667	2	11	13	2.2	15	0	16	17	1	9	46	7.7
CAREER	6	6	182/30.3	16-41	.390	4-14	.286	10-15	.667	2	11	13	2.2	15	0	16	17	1	9	46	7.7



# #11 NYLA POLLARD

SOPHOMORE - GUARD

VIRGINIA BEACH, VA. - PRINCESS ANNE

## >> POLLARD'S CAREER HIGHS

### MINUTES

Season	35	vs. East Carolina, 11/27/18
Career	35 (2x)	last time vs. ECU, 11/27/18

### POINTS

Season	10	vs. East Carolina, 11/27/18
Career	14	vs. USC Upstate, 12/5/17

### REBOUNDS

Season	12	vs. East Carolina, 11/27/18
Career	12	vs. East Carolina, 11/27/18

### FIELD GOALS

Season	4	at Loyola, 11/14/18
Career	6	vs. USC Upstate, 12/5/17

### 3-POINT FIELD GOALS

Season	2	vs. Howard, 11/12/18
Career	2	(5x) last time vs. HU, 11/12/18

### FREE THROWS

Season	6	vs. East Carolina, 11/27/18
Career	6	vs. East Carolina, 11/27/18

### ASSISTS

Season	4	at Loyola, 11/14/18
Career	5 (2x) last time vs. ODU, 12/17/17	

### STEALS

Season	2	vs. Howard, 11/12/18
Career	4	vs. Davidson, 11/27/17

### BLOCKS

Season	-	-
Career	1	(4x) last time vs. UD, 2/23/18

### MISCELLANEOUS

Career in Double Figures	4
2018-19 in Double Figures	1

## >> 2018-19 GAME-BY-GAME

Opp	Date	GS	Min	FG-A	3FG-A	FT-A	Reb.	A	TO	BLK	STL	Pts
VCU	11/6		19	2-4	1-1	0-1	1	0	0	0	1	5
HOW	11/12		34	3-7	2-3	0-0	3	2	2	0	2	8
at Loy	11/17		23	4-6	1-2	0-0	2	4	1	0	1	9
at DC	11/24		25	1-4	0-2	0-1	1	1	2	0	0	2
ECU	11/27	*	35	2-9	0-3	6-8	12	2	4	1	0	10
at Hart	11/30	*	25	0-6	0-3	0-0	3	2	2	0	0	0

## >> POLLARD'S CAREER STATISTICS

Season	GP	GS	Min/Avg	FG-FGA	Pct	3pt-Att	Pct	FT-FTA	Pct	Off	Def	Reb	Avg	PF	FO	A	TO	Blk	S	TP	Avg
2017-18	30	27	658/21.9	44-121	.364	14-48	.292	20-27	.741	22	31	53	1.8	71	3	46	40	4	15	122	4.1
2018-19	6	2	162/27.0	12-36	.333	4-14	.286	6-10	.600	5	17	22	3.7	21	1	12	11	1	4	34	5.7
CAREER	36	29	820/22.8	56-157	.357	18-62	.290	26-37	.703	26	48	75	2.1	82	4	58	51	5	19	156	4.3



# #12 HARPER BIRDSONG

## SOPHOMORE - GUARD

SUFFOLK, VA. - NANSEMOND SUFFOLK  
(George Washington)

### >> BIRDSONG'S CAREER HIGHS

#### MINUTES

Season	20	at Davidson, 11/24/18
Career	20	at Davidson, 11/24/18

#### POINTS

Season	12	vs. Howard, 11/12/18
Career	12	vs. Howard, 11/12/18

#### REBOUNDS

Season	2	vs. Howard, 11/12/18
Career	2	vs. Howard, 11/12/18

#### FIELD GOALS

Season	5	vs. Howard, 11/12/18
Career	5	vs. Howard, 11/12/18

#### 3-POINT FIELD GOALS

Season	3	at Loyola, 11/14/18
Career	3	at Loyola, 11/14/18

#### FREE THROWS

Season	3	vs. East Carolina, 11/27/18
Career	3	vs. East Carolina, 11/27/18

#### ASSISTS

Season	2	at Davidson, 11/24/18
Career	2	at Davidson, 11/24/18

#### STEALS

Season	1	(4x) last time at ECU, 11/27/18
Career	1	(4x) last time at ECU, 11/27/18

#### BLOCKS

Season	1	(2x) last time vs. ECU, 11/27/18
Career	1	(3x) last time vs. ECU, 11/27/18

#### MISCELLANEOUS

Career in Double Figures	3
2018-19 in Double Figures	3

### >> 2018-19 GAME-BY-GAME

Opp	Date	GS	Min	FG-A	3FG-A	FT-A	Reb.	A	TO	BLK	STL	Pts
VCU	11/6	*	12	0-4	0-2	0-0	0	0	4	0	0	0
HOW	11/12	*	16	5-10	1-4	1-2	2	1	1	1	1	12
at Loy	11/17	*	14	3-3	3-3	0-2	0	0	2	0	0	9
at DC	11/24	*	20	4-10	2-6	0-0	0	2	1	0	1	10
ECU	11/27		19	3-9	1-3	3-3	1	1	3	1	1	10
at Hart	11/30		19	2-5	2-5	2-5	1	1	2	0	0	8

### >> BIRDSONG'S CAREER STATISTICS

Season	GP	GS	Min/Avg	FG-FGA	Pct	3pt-Att	Pct	FT-FTA	Pct	Off	Def	Reb	Avg	PF	FO	A	TO	Blk	S	TP	Avg
2016-17	8	0	39/4.9	4-13	.308	2-8	.250	1-1	1.000	0	2	2	0.3	2	0	2	1	0	1	11	1.4
2017-18																					
2018-19	6	4	101/16.8	17-41	.415	9-23	.391	6-12	.500	2	2	4	0.7	12	0	5	13	2	4	49	8.2
CAREER	14	4	140/10.0	21-54	.389	11-31	.355	7-13	.538	2	4	6	0.8	14	0	7	14	2	5	60	4.3

### >> 2018-19 GAME-BY-GAME

Opp	Date	GS	Min	FG-A	3FG-A	FT-A	Reb.	A	TO	BLK	STL	Pts
VCU	11/6		16	1-5	1-4	1-2	4	1	0	1	0	4
HOW	11/12		13	5-9	4-7	0-2	2	0	0	2	0	14
at Loy	11/17		18	2-2	1-1	0-0	5	3	1	0	2	5
at DC	11/24		16	3-5	3-4	0-0	3	0	0	0	0	9
ECU	11/27		15	2-6	2-4	0-0	4	2	0	0	0	6
at Hart	11/30		22	0-6	0-4	2-2	1	0	1	1	1	2



# #15 EMMA KRAUSE

## FRESHMAN - FORWARD

PLANTATION, FLA. - CARDINAL GIBBONS

### >> KRAUSE'S CAREER HIGHS

#### MINUTES

Season	22	at Hartford, 11/30/18
Career	22	at Hartford, 11/30/18

#### POINTS

Season	14	vs. Howard, 11/12/18
Career	14	vs. Howard, 11/12/18

#### REBOUNDS

Season	5	at Loyola, 11/14/18
Career	5	at Loyola, 11/14/18

#### FIELD GOALS

Season	5	vs. Howard, 11/12/18
Career	5	vs. Howard, 11/12/18

#### 3-POINT FIELD GOALS

Season	4	vs. Howard, 11/12/18
Career	4	vs. Howard, 11/12/18

#### FREE THROWS

Season	1	vs. VCU, 11/6/18
Career	1	vs. VCU, 11/6/18

#### ASSISTS

Season	3	at Loyola, 11/14/18
Career	3	at Loyola, 11/14/18

#### STEALS

Season	2	at Loyola, 11/14/18
Career	2	at Loyola, 11/14/18

#### BLOCKS

Season	2	vs. Howard, 11/12/18
Career	2	vs. Howard, 11/12/18

#### MISCELLANEOUS

Career in Double Figures	1
2018-19 in Double Figures	1

### >> KRAUSE'S CAREER STATISTICS

Season	GP	GS	Min/Avg	FG-FGA	Pct	3pt-Att	Pct	FT-FTA	Pct	Off	Def	Reb	Avg	PF	FO	A	TO	Blk	S	TP	Avg
2018-19	6	0	100/16.7	13-33	.394	11-24	.458	3-6	.500	7	12	19	3.2	9	0	6	2	4	3	40	6.7
CAREER	6	0	100/16.7	13-33	.394	11-24	.458	3-6	.500	7	12	19	3.2	9	0	6	2	4	3	40	6.7





# #20 CHANDLER SMITH

SENIOR - CENTER

PORT TOBACCO, MD. - ST. MARY'S RYKEN

## >> SMITH'S CAREER HIGHS

### MINUTES

Season	8 (2x) last time vs. ECU, 11/27/18
Career	18 at Delaware, 1/26/16

### POINTS

Season	1 vs. Howard, 11/12/18
Career	4 (4x) last time at SFU 12/2/17

### REBOUNDS

Season	3 vs. East Carolina, 11/27/18
Career	5 vs. Hofstra, 2/7/17

### FIELD GOALS

Season	-
Career	2 (3x) last time at SFU, 12/2/17

### 3-POINT FIELD GOALS

Season	-
Career	-

### FREE THROWS

Season	1 vs. Howard, 11/12/18
Career	4 vs. Hofstra, 2/7/17

### ASSISTS

Season	-
Career	1 (2x) last time at Towson, 2/4/18

### STEALS

Season	-
Career	2 (2x) last time vs. Mount St. Mary's, 12/18/16

### BLOCKS

Season	1 (2x) last time at Loyola, 11/17/18
Career	3 vs. Mount St. Mary's, 12/18/16

### MISCELLANEOUS

Career in Double Figures	0
2017-18 in Double Figures	0

## >> SMITH'S CAREER STATISTICS

Season	GP	GS	Min/Avg	FG-FGA	Pct	3pt-Att	Pct	FT-FTA	Pct	Off	Def	Reb	Avg	PF	FO	A	TO	Blk	S	TP	Avg
2015-16	19	0	97/5.1	3-12	.250	0-0	.000	0-6	.000	2	10	12	0.6	13	0	0	5	4	3	6	0.3
2016-17	13	0	77/5.9	6-21	.286	0-0	.000	7-8	.875	2	22	24	1.8	16	1	1	7	11	3	19	1.5
2017-18	21	0	86/4.1	5-17	.294	0-0	.000	0-0	.000	4	8	12	0.6	15	0	3	8	9	1	10	0.5
2018-19	4	0	24/6.0	0-1	.000	0-0	.000	1-2	.500	1	6	7	1.8	3	0	0	3	2	0	1	0.3
<b>CAREER</b>	<b>57</b>	<b>0</b>	<b>284/5.0</b>	<b>14-51</b>	<b>.275</b>	<b>0-0</b>	<b>.000</b>	<b>8-16</b>	<b>.500</b>	<b>9</b>	<b>46</b>	<b>55</b>	<b>1.0</b>	<b>47</b>	<b>1</b>	<b>4</b>	<b>23</b>	<b>26</b>	<b>7</b>	<b>36</b>	<b>0.6</b>

## >> 2018-19 GAME-BY-GAME

Opp	Date	GS	Min	FG-A	3FG-A	FT-A	Reb.	A	TO	BLK	STL	Pts
VCU	11/6	8	0-0	0-0	0-0	2	0	0	0	0	0	0
HOW	11/12	4	0-0	0-0	1-2	2	0	0	1	0	1	0
at Loy	11/17	4	0-1	0-0	0-0	0	0	0	1	0	0	0
at DC	11/24		DNP - COACH'S DECISION									
ECU	11/27	8	0-0	0-0	0-0	3	0	2	0	0	0	0
at Hart	11/30		DNP - COACH'S DECISION									



# #21 BAILEY EICHNER

SOPHOMORE - GUARD/FORWARD

CUDAHY, WISC. - CUDAHY

## >> EICHNER'S CAREER HIGHS

### MINUTES

Season	11 vs. VCU, 11/6/18
Career	11 vs. VCU, 11/6/18

### POINTS

Season	1 vs. VCU, 11/6/18
Career	4 vs. James Madison, 2/2/18

### REBOUNDS

Season	1 vs. VCU, 11/6/18
Career	5 vs. James Madison, 2/2/18

### FIELD GOALS

Season	-
Career	1 (2x) last time vs. JMU, 2/2/18

### 3-POINT FIELD GOALS

Season	-
Career	-

### FREE THROWS

Season	1 vs. VCU, 11/6/18
Career	2 vs. James Madison, 2/2/18

### ASSISTS

Season	-
Career	2 at Hofstra, 1/19/18

### STEALS

Season	-
Career	1 at Hofstra, 1/19/18

### BLOCKS

Season	-
Career	1 at Hofstra, 1/19/18

### MISCELLANEOUS

Career in Double Figures	0
2017-18 in Double Figures	0

## >> EICHNER'S CAREER STATISTICS

Season	GP	GS	Min/Avg	FG-FGA	Pct	3pt-Att	Pct	FT-FTA	Pct	Off	Def	Reb	Avg	PF	FO	A	TO	Blk	S	TP	Avg
2017-18	16	0	46/2.9	2-6	.333	0-2	.000	4-8	.500	6	9	15	0.9	14	0	2	7	2	1	8	0.5
2018-19	3	0	13/4.3	0-2	.000	0-1	.000	1-2	.500	1	0	1	0.3	2	0	0	2	0	0	1	0.3
<b>CAREER</b>	<b>19</b>	<b>0</b>	<b>59/3.1</b>	<b>2-8</b>	<b>.250</b>	<b>0-3</b>	<b>.000</b>	<b>5-10</b>	<b>.500</b>	<b>7</b>	<b>9</b>	<b>16</b>	<b>0.8</b>	<b>16</b>	<b>0</b>	<b>2</b>	<b>9</b>	<b>2</b>	<b>1</b>	<b>9</b>	<b>0.5</b>

## >> 2018-19 GAME-BY-GAME

Opp	Date	GS	Min	FG-A	3FG-A	FT-A	Reb.	A	TO	BLK	STL	Pts	
VCU	11/6	11	0-2	0-1	1-2	1	0	1	0	0	0	1	
HOW	11/12	1	0-0	0-0	0-0	0	0	1	0	0	0	0	
at Loy	11/17	1	0-0	0-0	0-0	0	0	0	0	0	0	0	
at DC	11/24		DNP - COACH'S DECISION										
ECU	11/26		DNP - COACH'S DECISION										
at Hart	11/30		DNP - COACH'S DECISION										



# #25 GABBY ROGERS

## SOPHOMORE - CENTER

### DALLAS, TEXAS - BISHOP LYNCH

#### >> ROGERS' CAREER HIGHS

##### MINUTES

Season	27	at Davidson, 11/24/18
Career	27	at Davidson, 11/24/18

##### POINTS

Season	10	at Davidson, 11/24/18
Career	10	at Davidson, 11/24/18

##### REBOUNDS

Season	3	vs. Howard, 11/12/18
Career	5	at Elon, 3/1/18

##### FIELD GOALS

Season	4	(2x) last time at DC, 11/24/18
Career	4	(3x) last time at DC 11/24/18

##### 3-POINT FIELD GOALS

Season	-	-
Career	-	-

##### FREE THROWS

Season	2	(2x) last time at DC, 11/24/18
Career	2	(5x) last time at DC, 11/24/18

##### ASSISTS

Season	1	at Loyola, 11/14/18
Career	1	(7x) last time at Loyola 11/14/18

##### STEALS

Season	3	at Hartford, 11/30/18
Career	3	(2x) last time at Hart, 11/30/18

##### BLOCKS

Season	1	(2x) last time at Hart, 11/30/18
Career	2	(2x) last time at Towson, 2/4/18

##### MISCELLANEOUS

Career in Double Figures	1
2018-19 in Double Figures	1

#### >> 2018-19 GAME-BY-GAME

Opp	Date	GS	Min	FG-A	3FG-A	FT-A	Reb.	A	TO	BLK	STL	Pts
VCU	11/6	*	18	1-2	0-0	2-2	1	0	2	0	0	4
HOW	11/12	*	19	1-2	0-0	0-0	3	0	2	1	0	2
at Loy	11/17	*	16	4-6	0-0	0-0	2	1	0	0	0	8
at DC	11/24	*	27	4-8	0-1	2-2	2	0	1	0	1	10
ECU	11/27	*	15	0-1	0-0	0-0	2	0	3	0	1	0
at Hart	11/30	*	18	1-2	0-0	0-0	1	0	0	1	3	2

#### >> ROGERS' CAREER STATISTICS

Season	GP	GS	Min/Avg	FG-FGA	Pct	3pt-Att	Pct	FT-FTA	Pct	Off	Def	Reb	Avg	PF	FO	A	TO	Blk	S	TP	Avg
2017-18	29	0	263/9.1	24-47	.511	0-0	.000	9-13	.692	12	40	52	1.8	55	1	7	15	6	10	57	2.0
2018-19	6	6	188/31.3	11-21	.544	0-1	.000	4-4	1.000	4	7	11	1.8	19	0	1	8	2	5	26	4.3
<b>CAREER</b>	<b>35</b>	<b>6</b>	<b>376/10.7</b>	<b>35-68</b>	<b>.515</b>	<b>0-1</b>	<b>.000</b>	<b>13-17</b>	<b>.765</b>	<b>16</b>	<b>47</b>	<b>63</b>	<b>1.8</b>	<b>74</b>	<b>1</b>	<b>8</b>	<b>23</b>	<b>8</b>	<b>15</b>	<b>83</b>	<b>2.4</b>



# #30 VICTORIA REYNOLDS

## JUNIOR - FORWARD

### FAIRFAX, VA./ARCHBISHOP SPALDING

#### >> REYNOLDS' CAREER HIGHS

##### MINUTES

Season	37	vs. VCU, 11/6/18
Career	40	(2x) last time vs. UNCW, 2/16/17

##### POINTS

Season	15	vs. East Carolina, 11/27/18
Career	22	at St. Francis (Pa.), 12/2/17

##### REBOUNDS

Season	15	vs. East Carolina, 11/27/18
Career	18	vs. Charleston, 1/26/18

##### FIELD GOALS

Season	6	at Davidson, 11/24/18
Career	9	vs. Northeastern, 2/11/18

##### 3-POINT FIELD GOALS

Season	1	vs. East Carolina, 11/27/18
Career	2	(2x) last time at UofR, 11/29/17

##### FREE THROWS

Season	6	vs. East Carolina, 11/27/18
Career	9	vs. Old Dominion, 12/17/17

##### ASSISTS

Season	5	vs. VCU, 11/6/18
Career	8	at East Carolina, 11/21/17

##### STEALS

Season	3	at Hartford, 11/30/18
Career	7	vs. Hofstra, 1/28/18

##### BLOCKS

Season	2	vs. East Carolina, 11/27/18
Career	3	(2x) last time vs. NU, 2/11/18

##### MISCELLANEOUS

Career in Double Figures	23
2018-19 in Double Figures	4

#### >> 2018-19 GAME-BY-GAME

Opp	Date	GS	Min	FG-A	3FG-A	FT-A	Reb.	A	TO	BLK	STL	Pts
VCU	11/6	*	37	4-7	0-0	0-0	4	5	2	0	0	8
HOW	11/12	*	26	3-10	0-2	4-6	5	3	1	0	2	10
at Loy	11/17	*	33	4-10	0-0	2-2	5	2	7	0	0	10
at DC	11/24	*	29	6-8	0-0	1-1	3	2	2	0	1	13
ECU	11/27	*	35	4-6	1-1	6-6	15	4	6	2	1	15
at Hart	11/30	*	29	1-6	0-0	2-2	7	1	5	0	3	4

#### >> REYNOLDS' CAREER STATISTICS

Season	GP	GS	Min/Avg	FG-FGA	Pct	3pt-Att	Pct	FT-FTA	Pct	Off	Def	Reb	Avg	PF	FO	A	TO	Blk	S	TP	Avg
2016-17	28	0	466/16.6	51-104	.490	5-12	.417	36-46	.783	44	45	89	3.2	42	0	21	30	5	33	143	5.1
2017-18	30	30	977/32.6	125-270	.463	8-34	.235	50-68	.735	65	147	212	7.1	77	1	60	69	22	71	308	10.3
2018-19	5	5	159/31.8	21-41	.512	1-4	.250	13-15	.867	6	30	36	7.2	12	1	16	18	2	4	56	11.2
<b>CAREER</b>	<b>63</b>	<b>35</b>	<b>1602/25.4</b>	<b>197-415</b>	<b>.475</b>	<b>14-50</b>	<b>.280</b>	<b>99-129</b>	<b>.767</b>	<b>115</b>	<b>222</b>	<b>337</b>	<b>5.3</b>	<b>131</b>	<b>2</b>	<b>97</b>	<b>117</b>	<b>28</b>	<b>108</b>	<b>507</b>	<b>8.0</b>



# #32 CAROLINE STOVER

FRESHMAN - CENTER

PLYMTON, MASS. - CARDINAL SPELLMAN

## >> 2018-19 GAME-BY-GAME

Opp	Date	GS	Min	FG-A	3FG-A	FT-A	Reb.	A	TO	BLK	STL	Pts
VCU	11/6			DNP								
HOW	11/12			DNP								
at Loy	11/17	1	0-2	0-0	0-0	0	0	0	0	0	0	0
at DC	11/24			DNP								
ECU	11/27			DNP								
at Hart	11/30			DNP								

## >> STOVER'S CAREER STATISTICS

MINUTES			FREE THROWS		
Season	1	at Loyola, 11/14/18	Season	-	-
Career	1	at Loyola, 11/14/18	Career	-	-
POINTS			ASSISTS		
Season	-	-	Season	-	-
Career	-	-	Career	-	-
REBOUNDS			STEALS		
Season	-	-	Season	-	-
Career	-	-	Career	-	-
FIELD GOALS			BLOCKS		
Season	-	-	Season	-	-
Career	-	-	Career	-	-
3-POINT FIELD GOALS			MISCELLANEOUS		
Season	-	-	Career in Double Figures		0
Career	-	-	2018-19 in Double Figures		0

## >> STOVER'S CAREER STATISTICS

Season	GP	GS	Min/Avg	FG-FGA	Pct	3pt-Att	Pct	FT-FTA	Pct	Off	Def	Reb	Avg	PF	FO	A	TO	Blk	S	TP	Avg
2018-19	1	0	1/1.0	0-2	.000	0-0	.000	0-0	.000	0	0	0	0.0	0	0	0	0	0	0	0	0.0
CAREER	1	0	1/1.0	0-2	.000	0-0	.000	0-0	.000	0	0	0	0.0	0	0	0	0	0	0	0	0.0



2018-19 Tribe Women's Basketball





**W&M Women's Basketball**  
**William & Mary Season Schedule/Results & Leaders (as of Nov 30, 2018)**  
**All games**

<b>RECORD:</b>	<b>OVERALL</b>	<b>HOME</b>	<b>AWAY</b>	<b>NEUTRAL</b>
ALLGAMES	3-3	2-1	1-2	0-0
CONFERENCE	0-0	0-0	0-0	0-0
NON-CONFERENCE	3-3	2-1	1-2	0-0

<b>Date</b>	<b>Opponent</b>	<b>Score</b>	<b>Att. High Points</b>	<b>High Rebounds</b>
11/06/18	VCU	55-72 L	684 (15)Boggs, Bianca	(6)Boggs, Bianca
11/12/18	HOWARD	W 88-75	564 (26)Boggs, Bianca	(9)Boggs, Bianca
11/17/18	at Loyola	W 65-49	352 (14)Boggs, Bianca	(6)Reynolds, Victoria
11/24/18	at Davidson	65-76 L	412 (18)Boggs, Bianca	(10)Boggs, Bianca
11/27/18	EAST CAROLINA	W 63-43	574 (15)Reynolds, Victoria	(15)Reynolds, Victoria
11/30/18	at HARTFORD	45-50 L	649 (14)Hodgson, Eva	(7)Reynolds, Victoria

\* - Conference game

<b>Attendance Summary</b>	<b>Games</b>	<b>Attend</b>	<b>Avg/Game</b>
Home	3	1822	607
Away	3	1413	471
Neutral	0	0	0
Total	6	3235	539



**W&M Women's Basketball**  
**William & Mary Combined Team Statistics (as of Nov 30, 2018)**  
**All games**

<b>RECORD:</b>	<b>OVERALL</b>	<b>HOME</b>	<b>AWAY</b>	<b>NEUTRAL</b>
ALL GAMES	3-3	2-1	1-2	0-0
CONFERENCE	0-0	0-0	0-0	0-0
NON-CONFERENCE	3-3	2-1	1-2	0-0

#	Player	gp-gs	min	avg	Total		3-Point		F-Throw		Rebounds				pf	dq	a	to	blk	stl	pts	avg
					fg-fga	fg%	3fg-fga	3fg%	ft-fa	ft%	off	def	tot	avg								
02	Boggs, Bianca	6-6	217	36.2	34-85	.400	6-23	.261	20-23	.870	7	40	47	7.8	11	0	28	27	4	16	94	15.7
30	Reynolds, Victoria	6-6	188	31.3	22-47	.468	1-4	.250	15-17	.882	8	35	43	7.2	15	1	17	23	2	7	60	10.0
12	Birdsong, Harper	6-4	101	16.8	17-41	.415	9-23	.391	6-12	.500	2	2	4	0.7	12	0	5	13	2	4	49	8.2
10	Hodgson, Eva	6-6	182	30.3	16-41	.390	4-14	.286	10-15	.667	2	11	13	2.2	15	0	16	17	1	9	46	7.7
15	Krause, Emma	6-0	100	16.7	13-33	.394	11-24	.458	3-6	.500	7	12	19	3.2	9	0	6	2	4	3	40	6.7
11	Pollard, Nyla	6-2	162	27.0	12-36	.333	4-14	.286	6-10	.600	5	17	22	3.7	21	1	12	11	1	4	34	5.7
25	Rogers, Gabby	6-6	113	18.8	11-21	.524	0-1	.000	4-4	1.000	4	7	11	1.8	19	0	1	8	2	5	26	4.3
05	Jones, Misha	6-0	64	10.7	8-17	.471	5-13	.385	3-4	.750	6	6	12	2.0	10	0	7	3	2	0	24	4.0
00	Underwood, Libby	5-0	34	6.8	3-7	.429	0-2	.000	0-0	.000	1	0	1	0.2	1	0	1	1	1	0	6	1.2
21	Eichner, Bailey	3-0	13	4.3	0-2	.000	0-1	.000	1-2	.500	1	0	1	0.3	2	0	0	2	0	0	1	0.3
20	Smith, Chandler	4-0	24	6.0	0-1	.000	0-0	.000	1-2	.500	1	6	7	1.8	3	0	0	3	2	0	1	0.3
03	Taylor, Ashley	1-0	1	1.0	0-0	.000	0-0	.000	0-0	.000	0	0	0	0.0	0	0	0	0	0	0	0	0.0
32	Stover, Caroline	1-0	1	1.0	0-2	.000	0-0	.000	0-0	.000	0	0	0	0.0	0	0	0	0	0	0	0	0.0
Team											13	19	32				1					
Total.....		6	1200		136-333	.408	40-119	.336	69-95	.726	57	155	212	35.3	118	2	93	111	21	48	381	63.5
Opponents.....		6	1199		128-327	.391	30-97	.309	79-118	.669	62	146	208	34.7	107	0	72	114	23	55	365	60.8

<b>TEAM STATISTICS</b>	<b>WM</b>	<b>OPP</b>
SCORING	381	365
Points per game	63.5	60.8
Scoring margin	+2.7	-
FIELD GOALS-ATT	136-333	128-327
Field goal pct	.408	.391
3 POINT FG-ATT	40-119	30-97
3-point FG pct	.336	.309
3-pt FG made per game	6.7	5.0
FREE THROWS-ATT	69-95	79-118
Free throw pct	.726	.669
F-Throws made per game	11.5	13.2
REBOUNDS	212	208
Rebounds per game	35.3	34.7
Rebounding margin	+0.7	-
ASSISTS	93	72
Assists per game	15.5	12.0
TURNOVERS	111	114
Turnovers per game	18.5	19.0
Turnover margin	+0.5	-
Assist/turnover ratio	0.8	0.6
STEALS	48	55
Steals per game	8.0	9.2
BLOCKS	21	23
Blocks per game	3.5	3.8
ATTENDANCE	1822	1413
Home games-Avg/Game	3-607	3-471
Neutral site-Avg/Game	-	0-0

<b>Date</b>	<b>Opponent</b>		<b>Score</b>	<b>Att.</b>
11/06/18	VCU	L	55-72	684
11/12/18	HOWARD	W	88-75	564
11/17/18	at Loyola	W	65-49	352
11/24/18	at Davidson	L	65-76	412
11/27/18	EAST CAROLINA	W	63-43	574
11/30/18	at HARTFORD	L	45-50	649















\* - Conference game

<b>Score by Periods</b>	<b>1st</b>	<b>2nd</b>	<b>3rd</b>	<b>4th</b>	<b>Totals</b>
William & Mary	112	90	88	91	381
Opponents	100	84	86	95	365

# WILLIAM & MARY RADIO AND TV CHART

**NOTES:** W&M looks to bounce back as it closes its trip to Connecticut with a game at Farfield ... The Tribe was selected to finish sixth in the CAA by a vote of league head coaches. Senior Bianca Boggs leads the Tribe averaging 15.7 points, and 7.8 rebounds. After scoring in double-figures in four of five contests, junior Victoria Reynolds in second on the team with 10.0 points and 7.2 rebounds.

RECORD	2018-19	LAST YR	STATS	W&M	OPP	FAIRFIELD	OPP	W&M'S LAST THREE GAMES		
<b>OVERALL</b>	3-3	16-14	<b>FG%</b>	.408	.391	.362	.362	<b>Nov. 24</b>	<b>at Davidson</b>	<b>L, 65-76</b>
<b>CAA</b>	0-0	7-11	<b>FT%</b>	.726	.669	.800	.633	Boggs 18 pts, 10 reb, Reynolds 13 pts, Rogers 10 pts		
<b>HOME</b>	2-1	11-5	<b>3PT%</b>	.336	.309	.250	.324	<b>Nov. 27</b>	<b>EAST CAROLINA</b>	<b>W, 63-43</b>
<b>AWAY/NEUTRAL</b>	1-2/0-0	8-5/0-1	<b>POINTS</b>	63.5	60.8	52.7	55.8	Reynolds 15 pts, 15 reb, Pollard 10 pts, 12 reb		
			<b>REBOUNDS</b>	35.3	34.7	35.7	33.8	<b>Nov. 30</b>	<b>at Hartford</b>	<b>L, 45-50</b>
			<b>TURNOVERS</b>	18.5	19.0	15.5	14.7	Hodgson 14 pts, Boggs 12 pts, Birdsong 8 pts		

	<b>0 LIBBY UNDERWOOD, G</b> SO./5-9/RYE, N.H./PORTSMOUTH	<table><tr><td>PPG</td><td>1.2</td><td>FG%</td><td>.429</td></tr><tr><td>RPG</td><td>0.2</td><td>FT%</td><td>-</td></tr><tr><td>APG</td><td>0.2</td><td>3PT%</td><td>.000</td></tr></table>	PPG	1.2	FG%	.429	RPG	0.2	FT%	-	APG	0.2	3PT%	.000	<ul style="list-style-type: none"><li>Looking to expand her role during her second season with the Green and Gold.</li><li>Had six points and added a block and assist against VCU (11/6).</li><li>Scored a career-high 8 points and added out 3 assists against USC Upstate (12/5/17).</li><li>Added four points in a rebound against Drexel (1/9/18).</li><li>Grabbed a rebound in the CAA Quarterfinal against Elon (3/8/18).</li></ul>	<b>POINTS</b> 8 vs. USC Upstate (12/5/17) <b>REBOUNDS</b> 3 vs. Northeastern (1/21/18) <b>ASSISTS</b> 3 vs. USC Upstate (12/5/17) <b>LAST GAME: PLAYED 2 MINUTES</b>
PPG	1.2	FG%	.429													
RPG	0.2	FT%	-													
APG	0.2	3PT%	.000													
	<b>1 SYDNEY WAGNER, G</b> SO./5-6/PHOENIXVILLE, PA./SPRING FORD SENIOR HIGH (STETSON)	<table><tr><td>PPG</td><td>-</td><td>FG%</td><td>-</td></tr><tr><td>RPG</td><td>-</td><td>FT%</td><td>-</td></tr><tr><td>SPG</td><td>-</td><td>3PT%</td><td>-</td></tr></table>	PPG	-	FG%	-	RPG	-	FT%	-	SPG	-	3PT%	-	<ul style="list-style-type: none"><li>Transfer from Stetson that has to sit out the 18-19 season due to NCAA Transfer rule.</li><li>Appeared in 32 games with nine starters for the Hatters last season.</li><li>Scored a career-high 20 points against Florida.</li><li>Dropped 18 points against on 5-of-8 from 3-point range against Webber International.</li><li>Averaged 6.0 ppg and knocked down 42 triples during her freshman season at Stetson.</li></ul>	<b>POINTS</b> 20 vs. Florida (11/22/17) <b>REBOUNDS</b> 5 vs. Lipscomb (2/19/18) <b>ASSISTS</b> 3 vs. Lipscomb (2/19/18) <b>LAST GAME: DNP - TRANSFER RULE</b>
PPG	-	FG%	-													
RPG	-	FT%	-													
SPG	-	3PT%	-													
	<b>2 BIANCA BOGGS, G</b> SR./5-8/WALDORF, MD./ST. MARY'S RYKEN	<table><tr><td>PPG</td><td>15.7</td><td>FG%</td><td>.400</td></tr><tr><td>RPG</td><td>7.8</td><td>FT%</td><td>.870 (20-23)</td></tr><tr><td>APG</td><td>4.7</td><td>3PT%</td><td>.261</td></tr></table>	PPG	15.7	FG%	.400	RPG	7.8	FT%	.870 (20-23)	APG	4.7	3PT%	.261	<ul style="list-style-type: none"><li>Named team captain for the 2018-19 season.</li><li>Earned Preseason First-Team All-CAA honors this season.</li><li>Notched a double-double with 18 points and 10 rebounds at Davidson (11/24).</li><li>Scored a career-high 33 points in a win at St. Francis (12/2/17).</li><li>Ranks 20th in school history with 1,007 career points.</li></ul>	<b>POINTS</b> 33 vs. St. Francis (Pa.) (12/2/17) <b>REBOUNDS</b> 11 (2x) last time vs. ECU (11/27/18) <b>ASSISTS</b> 8 at Delaware (2/9/18) <b>LAST GAME: 12 PTS, 6 REB, 6 STL</b>
PPG	15.7	FG%	.400													
RPG	7.8	FT%	.870 (20-23)													
APG	4.7	3PT%	.261													
	<b>3 ASHLEY TAYLOR, G</b> JR./6-0/CHARLOTTESVILLE, VA./ST. ANNE'S BELLEFIELD	<table><tr><td>PPG</td><td>0.0</td><td>FG%</td><td>-</td></tr><tr><td>RPG</td><td>0.0</td><td>FT%</td><td>-</td></tr><tr><td>APG</td><td>0.0</td><td>3PT%</td><td>-</td></tr></table>	PPG	0.0	FG%	-	RPG	0.0	FT%	-	APG	0.0	3PT%	-	<ul style="list-style-type: none"><li>Has seen action in 21 games during her career with the Tribe.</li><li>Made her first career basket, a 3-pointer, in the win against USC Upstate (12/5/17).</li><li>Grabbed a pair of rebounds and added an assist against Loyola (11/25/17).</li><li>Hit a basket and grabbed a board at Elon (3/1/18)</li></ul>	<b>POINTS</b> 3 vs. USC Upstate (12/5/17) <b>REBOUNDS</b> 2 vs. Loyola (11/25/17) <b>ASSISTS</b> 1 (4x) last time at Charleston (12/29/17) <b>LAST GAME: DNP - COACH'S DECISION</b>
PPG	0.0	FG%	-													
RPG	0.0	FT%	-													
APG	0.0	3PT%	-													
	<b>5 MISHA JONES, G/F</b> SR./5-9/MANASSAS PARK, VA./BATTLEFIELD	<table><tr><td>PPG</td><td>4.0</td><td>FG%</td><td>.471</td></tr><tr><td>RPG</td><td>2.0</td><td>FT%</td><td>.750 (3-4)</td></tr><tr><td>APG</td><td>1.2</td><td>3PT%</td><td>.385</td></tr></table>	PPG	4.0	FG%	.471	RPG	2.0	FT%	.750 (3-4)	APG	1.2	3PT%	.385	<ul style="list-style-type: none"><li>Named a team captain for the second straight season this year.</li><li>Scored a career-high nine points, including seven straight points in the win vs. Howard.</li><li>Matched a career-high with seven points against USC Upstate (12/5/17).</li><li>One of the Tribe's best free throw shooters, finishing last year at 90.9-percent.</li><li>Played a career-high 27 minutes with five points and five rebounds vs. UD (2/23/18).</li></ul>	<b>POINTS</b> 9 vs. Howard (11/12/18) <b>REBOUNDS</b> 5 (2x) vs. Delaware (2/23/18) <b>ASSISTS</b> 4 (2x) vs. Delaware (2/23/18) <b>LAST GAME: 3 PTS, 5 REB, 1 AST</b>
PPG	4.0	FG%	.471													
RPG	2.0	FT%	.750 (3-4)													
APG	1.2	3PT%	.385													
	<b>10 EVA HODGSON, G</b> FR./5-9/RINDGE, N.H./NEW HAMPTON SCHOOL	<table><tr><td>PPG</td><td>7.7</td><td>FG%</td><td>.390</td></tr><tr><td>RPG</td><td>2.2</td><td>FT%</td><td>.667 (10-15)</td></tr><tr><td>APG</td><td>2.7</td><td>3PT%</td><td>.286</td></tr></table>	PPG	7.7	FG%	.390	RPG	2.2	FT%	.667 (10-15)	APG	2.7	3PT%	.286	<ul style="list-style-type: none"><li>Made her first career start and scored eight points with three assists against VCU (11/6).</li><li>Improved her career-high with 14 points at Hartford (11/30).</li><li>Scored a then-career-high 13 points in the win against East Carolina (11/27).</li><li>Handed out a career-high five dimes in the win at Loyola (11/17).</li><li>Her parents and two brothers all played Division III basketball.</li></ul>	<b>POINTS</b> 14 vs. Hartford (11/30/18) <b>REBOUNDS</b> 5 vs. Howard (11/12/18) <b>ASSISTS</b> 5 at Loyola (11/17/18) <b>LAST GAME: 14 PTS, 2 REB, 3 STL</b>
PPG	7.7	FG%	.390													
RPG	2.2	FT%	.667 (10-15)													
APG	2.7	3PT%	.286													
	<b>11 NYLA POLLARD, G</b> SO./5-9/VIRGINIA BEACH, VA./PRINCESS ANNE	<table><tr><td>PPG</td><td>5.7</td><td>FG%</td><td>.333</td></tr><tr><td>RPG</td><td>3.7</td><td>FT%</td><td>.600 (6-10)</td></tr><tr><td>APG</td><td>2.0</td><td>3PT%</td><td>.286</td></tr></table>	PPG	5.7	FG%	.333	RPG	3.7	FT%	.600 (6-10)	APG	2.0	3PT%	.286	<ul style="list-style-type: none"><li>Should be a major contributor after being named to the CAA All-Rookie team last year.</li><li>Made her first start of the year &amp; had a double-double (10 pts, 12 reb) vs. ECU (11/27).</li><li>Had nine points and added two rebounds, four assists, and a steal at Loyola (11/17).</li><li>Tabbed back-to-back CAA Rookie of the Week for the week of Dec. 11 and Dec. 18.</li><li>Scored a career-high 14 points, four assists, three rebounds against Upstate (12/5/17).</li></ul>	<b>POINTS</b> 14 vs. USC Upstate (12/5/17) <b>REBOUNDS</b> 12 vs. East Carolina (11/27/18) <b>ASSISTS</b> 5 (2x) last time vs. ODU (12/17/17) <b>LAST GAME: 3 REB, 2 AST IN 25 MIN</b>
PPG	5.7	FG%	.333													
RPG	3.7	FT%	.600 (6-10)													
APG	2.0	3PT%	.286													
	<b>12 HARPER BIRDSONG, G</b> R-SO./5-10/SUFFOLK, VA./NANSEMOND SUFFOLK (GW)	<table><tr><td>PPG</td><td>8.2</td><td>FG%</td><td>.415</td></tr><tr><td>RPG</td><td>0.7</td><td>FT%</td><td>.500 (6-12)</td></tr><tr><td>APG</td><td>0.8</td><td>3PT%</td><td>.391</td></tr></table>	PPG	8.2	FG%	.415	RPG	0.7	FT%	.500 (6-12)	APG	0.8	3PT%	.391	<ul style="list-style-type: none"><li>Seen action in every game after sitting out all of last year because of NCAA rules.</li><li>Sharp-shooter that should be one of the Tribe's best 3-point threats this season.</li><li>Had a career-high 12 points in the win against Howard (11/12).</li><li>Registered 10 points and handed out two helpers at Davidson (11/24).</li><li>Appeared in nine games during her freshman season at George Washington.</li></ul>	<b>POINTS</b> 12 vs. Howard (11/12/18) <b>REBOUNDS</b> 2 vs. Howard (11/12/18) <b>ASSISTS</b> 2 at Davidson (11/24/18) <b>LAST GAME: 8 PTS, 1 REB, 1 AST</b>
PPG	8.2	FG%	.415													
RPG	0.7	FT%	.500 (6-12)													
APG	0.8	3PT%	.391													
	<b>15 EMMA KRAUSE, F</b> FR./6-2/PLANTATION, FLA./CARDINAL GIBBONS	<table><tr><td>PPG</td><td>6.7</td><td>FG%</td><td>.394</td></tr><tr><td>RPG</td><td>3.2</td><td>FT%</td><td>.500 (3-6)</td></tr><tr><td>BPG</td><td>0.7</td><td>3PT%</td><td>.458</td></tr></table>	PPG	6.7	FG%	.394	RPG	3.2	FT%	.500 (3-6)	BPG	0.7	3PT%	.458	<ul style="list-style-type: none"><li>Freshman, stretch four that can step out and knock down the three-ball.</li><li>Has hit a 3-pointer in every game this season.</li><li>Netted a career-high 14 points on four 3-pointers against Howard (11/12).</li><li>Hit three 3-pointers for nine points and had three rebounds at Davidson (11/24).</li><li>Tabbed to the Sun-Sentinel First-Team All-Broward County following her junior season.</li></ul>	<b>POINTS</b> 14 vs. Howard (11/12/18) <b>REBOUNDS</b> 4 vs. VCU (11/6/18) <b>ASSISTS</b> 1 vs. VCU (11/6/18) <b>LAST GAME: 2 PTS, 1 REB, 1 BLK, 1 ST</b>
PPG	6.7	FG%	.394													
RPG	3.2	FT%	.500 (3-6)													
BPG	0.7	3PT%	.458													
	<b>20 CHANDLER SMITH, C</b> SR./6-3/PORT TOBACCO, MD./ST. MARY'S-RYKEN	<table><tr><td>PPG</td><td>0.3</td><td>FG%</td><td>.000</td></tr><tr><td>RPG</td><td>1.8</td><td>FT%</td><td>.500 (1-2)</td></tr><tr><td>BPG</td><td>0.5</td><td>3PT%</td><td>-</td></tr></table>	PPG	0.3	FG%	.000	RPG	1.8	FT%	.500 (1-2)	BPG	0.5	3PT%	-	<ul style="list-style-type: none"><li>Named a team captain for her senior season.</li><li>Key reserve in the post that has appeared in 57 career games.</li><li>Tied a career-high with four points in a win at St. Francis (12/1/17).</li><li>Grabbed a career-high five rebounds at Hofstra (2/7/17).</li><li>Rejected 26 shots during her career.</li></ul>	<b>POINTS</b> 4 (4x) last time at SFU (12/2/17) <b>REBOUNDS</b> 5 vs. Hofstra (2/7/17) <b>BLOCKS</b> 3 vs. Mount St. Mary's (12/18/16) <b>LAST GAME: DNP - COACH'S DECISION</b>
PPG	0.3	FG%	.000													
RPG	1.8	FT%	.500 (1-2)													
BPG	0.5	3PT%	-													
	<b>21 BAILEY EICHNER, G/F</b> SO./6-1/CUDAHY, WISC./CUDAHY	<table><tr><td>PPG</td><td>0.3</td><td>FG%</td><td>.000</td></tr><tr><td>RPG</td><td>0.3</td><td>FT%</td><td>.500 (1-2)</td></tr><tr><td>APG</td><td>0.0</td><td>3PT%</td><td>.000</td></tr></table>	PPG	0.3	FG%	.000	RPG	0.3	FT%	.500 (1-2)	APG	0.0	3PT%	.000	<ul style="list-style-type: none"><li>Looking to expand her role this year after seeing action in 17 games last year.</li><li>Had a career-high four points and added a career-high five rebounds vs. JMU (2/2/18).</li><li>Made her collegiate debut in last year's season opener at Howard (11/11/17).</li><li>Three sport athlete in high school playing basketball, volleyball, and track &amp; field.</li></ul>	<b>POINTS</b> 4 vs. James Madison (2/2/18) <b>REBOUNDS</b> 5 vs. James Madison (2/2/18) <b>ASSISTS</b> 2 vs. Hofstra (1/19/18) <b>LAST GAME: DNP - COACH'S DECISION</b>
PPG	0.3	FG%	.000													
RPG	0.3	FT%	.500 (1-2)													
APG	0.0	3PT%	.000													
	<b>25 GABBY ROGERS, C</b> SO./6-1/DALLAS, TEXAS/BISHOP LYNCH	<table><tr><td>PPG</td><td>4.3</td><td>FG%</td><td>.524</td></tr><tr><td>RPG</td><td>2.0</td><td>FT%</td><td>1.000 (4-4)</td></tr><tr><td>SPG</td><td>0.8</td><td>3PT%</td><td>-</td></tr></table>	PPG	4.3	FG%	.524	RPG	2.0	FT%	1.000 (4-4)	SPG	0.8	3PT%	-	<ul style="list-style-type: none"><li>Center that has started all six games this season for the Tribe.</li><li>Scored a career-high 10 points and a steal at Davidson (11/24).</li><li>Notched a then-season-high eight points in the win at Loyola (11/17).</li><li>Made her first career start on opening night against VCU (11/6) scoring four points.</li><li>Scored a then career-high nine points in last year's season opener at Howard (11/11/17).</li></ul>	<b>POINTS</b> 10 at Davidson (11/24/18) <b>REBOUNDS</b> 5 at Elon (3/1/18) <b>ASSISTS</b> 1 (3x) last time vs. USC Upstate (12/5/17) <b>LAST GAME: 2 PTS, 1 REB, 3 STL, 1 BL</b>
PPG	4.3	FG%	.524													
RPG	2.0	FT%	1.000 (4-4)													
SPG	0.8	3PT%	-													
	<b>30 VICTORIA REYNOLDS, F</b> JR./5-10/FAIRFAX, VA./ARCHBISHOP SPALDING	<table><tr><td>PPG</td><td>10.0</td><td>FG%</td><td>.400</td></tr><tr><td>RPG</td><td>7.2</td><td>FT%</td><td>.870 (15-17)</td></tr><tr><td>SPG</td><td>1.2</td><td>3PT%</td><td>.261</td></tr></table>	PPG	10.0	FG%	.400	RPG	7.2	FT%	.870 (15-17)	SPG	1.2	3PT%	.261	<ul style="list-style-type: none"><li>Started the last 36 games for the Tribe.</li><li>Recorded a double-double with 15 points and 15 rebounds against ECU (11/27/18).</li><li>Had a then-season-high 13 points in the game at Davidson (11/24).</li><li>Scored a career-high 22 points in the win at St. Francis (12/2/17).</li><li>Grabbed 18 boards in the win against Charleston (1/26/18).</li></ul>	<b>POINTS</b> 22 vs. St. Francis (Pa.) (12/2/17) <b>REBOUNDS</b> 18 vs. Charleston (1/26/18) <b>STEALS</b> 7 vs. Hofstra (1/28/18) <b>LAST GAME: 4 PTS, 7 REB, 1 AST, 3 ST</b>
PPG	10.0	FG%	.400													
RPG	7.2	FT%	.870 (15-17)													
SPG	1.2	3PT%	.261													
	<b>32 CAROLINE STOVER, C</b> FR./6-3/PLYMPTON, MASS./CARDINAL SPELLMAN	<table><tr><td>PPG</td><td>0.0</td><td>FG%</td><td>.000</td></tr><tr><td>RPG</td><td>0.0</td><td>FT%</td><td>-</td></tr><tr><td>APG</td><td>0.0</td><td>3PT%</td><td>-</td></tr></table>	PPG	0.0	FG%	.000	RPG	0.0	FT%	-	APG	0.0	3PT%	-	<ul style="list-style-type: none"><li>Made her collegiate debut in the Tribe's win over Loyola.</li><li>Freshman post player looking to break into the post rotation this season.</li><li>Played four seasons of varsity basketball at Cardinal Spellman.</li><li>Ranked as the No. 131 in her class by Blue Star.</li><li>Tabbed to the Catholic Central League All-Star team.</li></ul>	<b>POINTS</b> <b>REBOUNDS</b> <b>STEALS</b> <b>LAST GAME: DNP - COACH'S DECISION</b>
PPG	0.0	FG%	.000													
RPG	0.0	FT%	-													
APG	0.0	3PT%	-													

**NOTES:**