



## WILLIAM &amp; MARY

MEDIA RELATIONS DIRECTOR: Andrew Phillips / PHONE: (757) 221-3344 / CELL: (804) 840-4439 / EMAIL: atphillips01@wm.edu

## TRIBE BY THE NUMBERS

14.8	W&M is second in the CAA with 14.8 assists per game. The Tribe has 325 assists this season.
15	Senior Bianca Boggs now has 15 career 20-point performances. With her next 20-point game she will move into a tie for sixth place in W&M history.
50	Boggs ranks 50th in the country with 53 steals this season. Her 2.4 steals rank her No. 53 in the NCAA.
67	Eva Hodgson has recorded 67 assists this season, which is fifth among W&M freshman all-time. She needs 34 more to move into sole possession of fourth place.
70	70 seems to be a magic number under Swanson. W&M has reached that mark 43 times under Swanson, and has posted a 39-7 mark when it scores more than 70 points.
90%	Since the start of CAA play, freshman Eva Hodgson is shooting 90-percent from the free throw. She has connected on 38-of-42 from the stripe in the past 11 games.
500	With one rebound, senior Bianca Boggs will grab her 500th career rebound. She will become the 11th player in school history with 1,000+ points and 500+ rebounds.
1298	Boggs now has 1,298 career points that ranks her 12th in school history. The senior needs 20 more points to move into the top 10 passing Karen Jordan '87 & Janine Aldridge '13.

## WHEN REFERENCING WILLIAM &amp; MARY AND TRIBE:

**William & Mary:** preferred in all but formal treatments  
**W&M:** most informal, use as second reference or on scorebug  
**College of William & Mary:** preferred formal treatment  
**Do not use:** WM, William and Mary, College of William and Mary, The College of William and Mary, The College

The William & Mary Athletics official nickname is the Tribe. While the Griffin is the official mascot of William & Mary Tribe Athletics, do not reference teams or the school as the Griffins.

## GAME

23

## WILLIAM &amp; MARY (11-11, 4-7 CAA) AT ELON (8-14, 3-8 CAA)

Sunday, Feb. 17, 2019 | 1:00 PM | Elon, N.C. | Schar Center  
Video: CAA.TV | Live Stats: ElonPhoenix.com

## SERIES HISTORY

ALL-TIME	Elon leads 10-5	Last: W&M, 65-60 (1/20/19) (Kaplan Arena)
AT ELON	Elon leads 5-1	Last: Elon, 82-61 (3/1/18) (Alumni Gym)

## W&amp;M NEWS AND NOTES

- The William & Mary women's basketball team looks to snap a season-long four game skid as they travel to Elon to close its three-game road swing with its first-ever visit to the Schar Center on Sunday, Feb. 17. Tip time between the Tribe and the Phoenix is set for 1 p.m.

- W&M and Elon meet for the 16th time in series history on Sunday, as W&M goes for the season sweep. The Tribe won the first meeting in Kaplan Arena 65-60 on Jan. 20, and has won the last two games at Kaplan Arena. The Phoenix are 5-1 in the series at home. The two teams have met in the CAA Tournament in each of the past two seasons.

- Freshman Eva Hodgson won her third CAA Rookie of the Week honor for the week Feb. 11. Hodgson averaged 18.5 points, 3.5 rebounds, and 2.0 assists per game during the week. The Tribe has won five weekly awards as Hodgson has also won on Dec. 3, Jan. 7, and Feb. 11, while senior Bianca Boggs was CAA Player of the Week on Dec. 31 and freshman Emma Krause was rookie of the week on Dec. 24.

- The Green and Gold is limiting its opponents to 27.8-percent (102-of-167) from 3-point range this season. The Tribe ranks third in the league in the category, but that is also good enough for 33rd nationally.

- W&M has moved its free throw percentage back to first in the CAA shooting 75.1-percent from the stripe. W&M's free throw percentage ranks 38th in the country. The Tribe shot a perfect 16-for-16 from the line at James Madison on Jan. 25, which was the first time the Tribe was perfect from the line (minimum 8 attempts) since 2016.

- W&M has outscored its opponents 687-670 in the first half games this season, but has been outscored 705-718 in the second half of games. W&M is 11-0 when it leads at the break, but is 0-11 when it trails or is tied at the half.

- The Green and Gold is hitting 3-pointers at the highest clip under Ed Swanson this season, and has had five, or more, 3-pointers in 19 of its 22 games. W&M ranks second in the CAA hitting 7.1 3-pointers per game. That mark is nearly two more than the next best average in the six-years under head coach Ed Swanson. As a team, the Tribe is hitting 34.1-percent from range, which is second in the CAA. Furthermore, W&M has hit more than 10 3-pointers in five games this season.

- Hodgson has started every game this season and the returns on the rookie point guard have been good. The freshman has been in double-figures in 12 games, and is averaging 9.8 points per game (most among CAA freshman), with 2.7 rebounds, and 3.1 helpers per contest. Hodgson scored a career-high 24 points last Sunday at UNCW, and is sixth in the CAA with a 1.1 assist/turnover ratio. The rookie is shooting 90-percent from the stripe since the start of CAA play.

- Boggs has been in double-figures in 19 of 22 games this season, and has accomplished that feat in 44 of her last 52 contests. Boggs was selected to the Preseason All-CAA First-Team after a breakout junior season. The senior captain leads the team with 17.0 points per night, and has added 7.2 rebounds and 3.7 assists per night. She is one of three players nationally to lead her team in points, rebounds, assists, steals, and blocks as of Feb. 14. The senior has turned in 15, 20-point career games, which ranks her tied for seventh all-time in school history.

	Nov. 6	VCU	L, 55-72	Senior Bianca Boggs scored 15 points, but the Tribe couldn't overcome an early scoring drought falling to in-state rival VCU on opening night.
	<b>NOV. 12</b>	<b>HOWARD</b>	<b>W, 88-75</b>	Four players scored in double-figures as the Tribe picked up its first victory of the season. Senior Bianca Boggs led the Tribe with 26 points, nine rebounds, and seven assists.
	Nov. 17	at Loyola (Md.)	W, 65-49	The Tribe led throughout as it won its first road game of the season with a convincing 65-49 decision at Davidson. Boggs (14) and Reynolds (10) were both in double-figures.
	Nov. 24	at Davidson	L, 65-76	W&M fought all afternoon, but Davidson pulled away down the stretch as it fell to Davidson 76-65. Bianca Boggs notched a double-double with 18 points and 10 rebs.
	<b>NOV. 27</b>	<b>ECU</b>	<b>W, 63-43</b>	Both Victoria Reynolds and Nyla Pollard recorded a double-double as the Tribe cruised to a 20-point victory after previously unbeaten East Carolina.
	Nov. 30	at Hartford	L, 45-50	W&M couldn't overcome a cold shooting night as it shot just 22.2-percent (12-of-54) from the floor. Freshman Eva Hodgson led the team with a career-high 14 points.
	Dec. 2	at Fairfield	W, 60-54	The Tribe outscored the Stags 6-0 in the final moments to pick up its fourth win of the season. Senior Bianca Boggs scored a game-high 22 to pace the Tribe.
	<b>Dec. 5</b>	<b>RICHMOND</b>	<b>W, 65-55</b>	W&M never trailed as it picked up its third straight win against Richmond. Freshman Eva Hodgson (15 pts) and Harper Birdson (13 pts) both had career-highs.
	Dec. 8	at Old Dominion	L, 69-83	ODU snapped a three-game losing streak to the Tribe at home. Redshirt sophomore Harper Birdsong led the Tribe with a career-high 18 points.
	Dec. 21	at Norfolk State	W, 55-44	The Tribe used a strong defensive effort to gut out a 55-44 road win at Norfolk State following a 13-day lay-off. Sophomore Harper Birdsong had a game-high 14 points off of the bench.
	<b>DEC. 29</b>	<b>GEORGE WASHINGTON</b>	<b>W, 73-59</b>	Senior Bianca Boggs recorded her second double-double with 26 points and 10 rebounds as the Tribe topped GW in a wire-to-wire win, 73-59.
	Jan. 4	at Hofstra*	W, 60-55	Senior Bianca Boggs had another double-double (22 pts, 10 reb) and freshman Eva Hodgson had a career-high 18 points as W&M won its second-ever game at Hofstra.
	Jan. 6	at Northeastern*	L, 74-88	Three scored in double-figures, but W&M couldn't overcome a big second half from Northeastern. Senior Bianca Boggs recorded her third straight 20-point game with 21.
	<b>JAN. 11</b>	<b>UNCW</b>	<b>W, 70-64</b>	W&M closed the first quarter on 17-0 run and never looked back as it picked up a 70-64 victory over UNCW. Bianca Boggs had 25 points and Victoria Reynolds had 17.
	<b>JAN. 13</b>	<b>CHARLESTON</b>	<b>L, 54-66</b>	The Tribe tied the game three times, but couldn't overcome a fiery Charleston team. Senior Bianca Boggs scored a game-high 18 points in the contest.
	<b>JAN. 20</b>	<b>ELON *</b>	<b>W, 65-60</b>	W&M used a 15-3 run to end third quarter and start the fourth to topple defending CAA Champion Elon. Bianca Boggs and Harper Birdsong led the team with 13 points.
	Jan. 25	at James Madison *	L, 65-48	The Tribe couldn't shake a tough shooting night and a slow start as it fell at James Madison. Freshman Eva Hodgson led the Tribe with 13 points.
	Jan. 27	at Towson*	W, 80-69	Four scored in double-figures as the Tribe became the first team to win at SECU this arena with an 80-69 triumph. Senior Bianca Boggs finished with a game-high 22 points.
	<b>FEB. 1</b>	<b>DELAWARE*</b>	<b>L, 59-70</b>	W&M couldn't overcome a fast Delaware start as it fell at home to the visiting Blue Hens. Four scored in double-figures for the Tribe led by Reynolds with 14 points.
	<b>FEB. 3</b>	<b>DREXEL*</b>	<b>L, 58-62</b>	The Tribe made a furious fourth-quarter comeback, but Drexel held on to pick up a 62-58 victory. Senior Bianca Boggs scored 17 points to lead the Tribe.
	Feb. 8	at Charleston*	L, 77-79 (2ot)	Charleston's Tyler Collins hit a lay-up with 4.7 seconds left in double overtime to sink the Tribe in Charleston. Senior Bianca Boggs poured a game-high 23 points.
	Feb. 10	at UNCW*	L, 58-66	UNCW scored the final 10 points of the game to even the season series against the Tribe at Trask Coliseum. Freshman Eva Hodgson scored a career-high 24 to lead W&M.
	Feb. 17	at Elon *	1 PM	The Tribe heads to the brand new Schar Center as it closes out the regular season with Elon. The Phoenix have topped W&M in the last two CAA Tournaments.
	<b>FEB. 22</b>	<b>TOWSON*</b>	<b>7 PM</b>	Towson and W&M close the regular season in Williamsburg this year. The Tigers squeaked out a one-point victory in its last trip to Kaplan Arena.
	<b>FEB. 24</b>	<b>JAMES MADISON*</b>	<b>2 PM</b>	W&M will raise breast cancer awareness as it welcomes James Madison to Kaplan Arena. The Dukes have won the last two meetings in Kaplan Arena.
	March 1	at Drexel*	7 PM	Drexel and W&M meet for the final time in the regular season when the Tribe travels to Philly. The Dragons are the defending CAA regular season champion.
	March 3	at Delaware*	2 PM	The Tribe heads to the site of the 2019 CAA Tournament when it travels to Delaware. W&M is 3-2 under Ed Swanson at Delaware during his tenure.
	<b>MARCH 7</b>	<b>NORTHEASTERN*</b>	<b>7 PM</b>	The Green and Gold plays host to Northeastern in its penultimate regular season game. The Tribe has a seven-game winning streak against the Huskies in Williamsburg.
	<b>MARCH 9</b>	<b>HOFSTRA*</b>	<b>2 PM</b>	W&M closes the regular season with the team it started CAA play against. The Tribe picked up a 63-53 victory over the Pride at Kaplan Arena last year.
	Mar. 13-16	CAA Championship		Delaware hosts the 2019 CAA Tournament at the Bob Carpenter Center in Newark, Del. The event runs from March 13-16.



## GENERAL INFORMATION

**Name:** College of William & Mary  
**Location:** Williamsburg, Va.  
**Founded:** 1693 (2nd oldest college in U.S.)  
**Enrollment** (includes graduate): 8,617  
**Nickname:** Tribe  
**Colors:** Green, Gold and Silver  
**Arena (capacity):** Kaplan Arena (8,600)  
**Affiliation:** NCAA Division I  
**Conference:** Colonial Athletic Association (CAA)  
**President:** Katherine A. Rowe (Carleton, 1984)  
**Chancellor:** Robert M. Gates (William & Mary, 1965)  
**Director of Athletics:** Samantha K. Huge (Gordon, 1992)

## LAST GAME STARTERS

2

## BIANCA BOGGS

Sr. • G • 5-9

Waldorf, Md./St. Mary's Ryken

G-GS	PPG	RPG	APG	FG%	3P%	FT%	STL	BLK
22-22	17.0	7.2	3.7	.423	.337	.702	53	18

- Named team captain for the 2018-19 season.
- Tabbed CAA Player of the Week for the week of Dec. 31.
- Has 15 20-point games, including eight 20-point games this season.
- Scored a career-high 33 points in a win at St. Francis (12/2/17).
- Ranks 12 in school history with 1,259 career points.

10

## EVA HODGSON

Fr. • G • 5-9

Rindge, N.H./New Hampton School

G-GS	PPG	RPG	APG	FG%	3P%	FT%	STL	BLK
22-22	9.8	2.8	3.1	.437	.400	.824	14	6

- Named CAA Rookie of the Week for the week of Dec. 3, Jan. 7, and Feb. 11.
- Poured in a career-high 24 points at UNCW (2/10).
- Scored a then-career-high 18 points in the CAA opening win at Hofstra (1/4).
- Netted 13 pts and grabbed a CH six boards with five dimes in the win at Towson (1/20).
- Her parents and two brothers all played Division III basketball.

11

## NYLA POLLARD

So. • G • 5-9

Virginia Beach, Va./Princess Anne

G-GS	PPG	RPG	APG	FG%	3P%	FT%	STL	BLK
22-18	4.2	2.7	2.6	.278	.227	.676	22	3

- Made her first start of the year & had a double-double (10 pts, 12 reb) vs. ECU (11/27).
- Scored eight points, two rebounds, and four assists in the win at Towson (1/27).
- Had nine points and added two rebounds, four assists, and a steal at Loyola (11/17).
- Scored a career-high 14 points, four assists, three rebounds against Upstate (12/5/17).

20

## CHANDLER SMITH

Sr. • C • 6-3

Plantation, Fla./Cardinal Gibbons

G-GS	PPG	RPG	APG	FG%	3P%	FT%	STL	BLK
11-1	0.3	1.4	0.1	.333	.000	.250	3	4

- Named a team captain for her senior season.
- Key reserve in the post that has appeared in 64 career games.
- Made her first career start at UNCW (2/10) & grabbed a CH six boards in a CH 20 mins.
- Tied a career-high with four points in a win at St. Francis (12/1/17).
- Rejected 28 shots during her career.

30

## VICTORIA REYNOLDS

Jr. • F • 5-10

Fairfax, Va./Archbishop Spalding

G-GS	PPG	RPG	APG	FG%	3P%	FT%	STL	BLK
22-19	10.3	5.7	2.1	.440	.371	.813	29	15

- Recorded a double-double with 15 points and 15 rebounds against ECU (11/27/18).
- Tied a season-high 17 points and five rebounds at Charleston (2/8).
- Notched a season-high 17 points with 7 rebs vs. UNCW (1/11).
- Poured in a career-high 22 points in the win at St. Francis (12/2/17).
- Grabbed 18 boards in the win against Charleston (1/26/18).

## TRIBE TRENDS

WILLIAM & MARY RECORD	
Overall.....	11-11
CAA Games.....	4-7
Leads at halftime.....	11-0
Trails at halftime.....	0-9
Tied at Halftime.....	0-2
Home.....	6-4
Away.....	5-7
Neutral.....	0-0

BY MONTH	
November.....	3-3
December.....	4-1
January.....	4-3
February.....	0-4
March.....	0-0

SCORING...	
W&M scores fewer than 40 pts.....	0-0
W&M scores 40-49.....	0-2
W&M scores 50-59.....	1-5
W&M scores 60-69.....	6-2
W&M scores 70-79.....	2-2
W&M scores 80+.....	2-0
Opp. scores fewer than 40 pts.....	0-0
Opp. scores 40-49.....	3-0
Opp. scores 50-59.....	5-1
Opp. scores 60-69.....	3-4
Opp. scores 70-79.....	0-4
Opp. scores 80+.....	0-2

FROM THE FIELD ...	
W&M shoots below 35%.....	0-3
W&M shoots better than 35%.....	11-8
W&M shoots better than 40%.....	8-2
W&M shoots better than 45%.....	9-1
W&M shoots better than 50%.....	1-0

FINAL MARGIN	
1-3 points.....	0-1
4-7 points.....	4-2
8-10 points.....	1-1
11-15 points.....	4-5
16+ points.....	2-2
In Overtime.....	0-0

BATTLE OF THE BOARDS	
Outrebounding opponent.....	3-1
Outrebounded by opponent.....	7-9
Rebounds are even.....	1-1

DOWN TO THE WIRE	
Leading with 5:00 left.....	9-1
Trailing with 5:00 left.....	1-9
Tied with 5:00 left.....	1-1

LAYING IT ON THE LINE...	
W&M attempts more free throws.....	4-3
Opp. attempts more free throws.....	6-7
Free Throws are even.....	1-1

JERSEY COLOR	
White.....	5-3
Green.....	4-5
Gold.....	2-3
Pink.....	0-0

STRENGTH OF OPPOSITION	
vs. Top 25 teams.....	0-0
vs. teams with a winning record.....	4-5
vs. teams .500 record.....	1-0
vs. teams with a losing record.....	6-5

STREAKING	
Coming off a win.....	4-7
Coming off of a loss.....	7-3
Longest Winning Streak.....	W3
Longest Losing Streak.....	L4
Current Streak.....	L4

## RESERVES

POS.	NO.	NAME	HT.	CL.	G-GS	PPG	RPG	APG	FG%	3P%	FT%	MISC.
G	0	Libby Underwood	5-9	So.	12-0	0.8	0.3	0.2	.308	.000	.500	1 stl
NOTE: Scored six points in the second half of the game versus VCU (11/6).												
G	1	Sydney Wagner	5-6	So.	-	-	-	-	-	-	-	-
NOTE: Transfer from Stetson that has to sit out the 2018-19 season due to NCAA Transfer Rule												
G	3	Ashley Taylor	5-8	Jr.	4-0	0.3	0.0	0.0	.000	.000	.500	-
NOTE: Has appeared in 24 career games in career.												
G/F	5	Misha Jones	5-9	Sr.	22-3	3.8	2.0	1.2	.426	.386	.875	3 stl
NOTE: Matched a career-high with nine points vs. UNCW (1/11)												
G	12	Harper Birdsong	5-10	R-So.	22-4	9.9	1.9	1/1	.384	.377	.743	14 stl
NOTE: First player off of the bench; Scored a career-high 18 at ODU (12/5).												
F	15	Emma Krause	6-2	Fr.	22-3	4.3	2.2	0.5	.340	.329	.545	6 blk
NOTE: Been in double-figures twice this season; Had a career-high 14 points against Howard.												
G/F	21	Bailey Eichner	6-1	So.	12-0	0.3	1.3	0.2	.111	.000	.500	3 stl
NOTE: Had a career-high six rebounds at ODU (12/5)												
C	25	Gabby Rogers	6-3	So.	21-18	4.0	2.9	0.2	.438	.000	.882	7 blk
NOTE: Recorded her first career double-double with 14 points and 12 rebounds at CofC (2/8)												
C	32	Caroline Stover	6-3	Fr.	2-0	0.0	0.0	0.0	.000	.000	.000	-
NOTE: Ranked as the No. 131 recruit in her class on BlueStar												

## W&amp;M INDIVIDUAL SUPERLATIVES

Double-Digt Games	16-17	17-18	18-19	Career	Double-Doubles	16-17	17-18	18-19	Career
Bianca Boggs	8	25	19	61	Bianca Boggs	-	1	4	6
Victoria Reynolds	4	15	14	33	Victoria Reynolds	-	1	1	2
Harper Birdsong	-	-	13	13	Nyla Pollard	-	-	1	1
Eva Hodgson	-	-	12	12	Gabby Rogers	-	-	1	1
Nyla Pollard	-	3	1	4					
Emma Krause	-	-	2	2					
Gabby Rogers	-	-	2	2					
20-Point Games	16-17	17-18	18-19	Career	Leading Scorer (times):	- Boggs (14), Hodgson (4), Birdsong (3), Reynolds (2)			
Bianca Boggs	-	7	8	15					
Eva Hodgson	-	-	1	1					
Victoria Reynolds	-	1	-	1					
30-Point Games	16-17	17-18	18-19	Career	Leading Rebounder (times):	- Reynolds (10), Boggs (10), Rogers (2), Eichner (1), Hodgson (1), Jones (1), Pollard (1)			
Bianca Boggs	-	1	-	1					
10-Rebound Games	16-17	17-18	18-19	Career	Leading Assists (times):	- Boggs (11), Hodgson (8), Pollard (4), Reynolds (2), Birdsong (2), Jones (1)			
Bianca Boggs	1	1	5	7					
Victoria Reynolds	-	4	3	7					
Gabby Rogers	-	-	1	1					
10-Assist Games	16-17	17-18	18-19	Career	Charges (times):	- Jones (13), Rogers (6), Eichner (6), Hodgson (5), Birdsong (1)			
					Three-Point Plays (Made/Attempted):	- Birdsong (3/3), Hodgson (1/1), Jones (1/1), Krause (1/1), Rogers (1/1), Boggs (17/20), Reynolds (1/2), Pollard (0/2)			
					Four-Point Plays (Made/Attempted):	- Jones (1/1)			



**Team**

<b>W&amp;M scored 80+ points</b>	<b>1/27/2019</b>	<b>80 (80-69, W at Towson)</b>
<b>W&amp;M scored 85+ points</b>	<b>11/12/2018</b>	<b>88 (88-75, W vs. Howard)</b>
W&M scored 90+ points	12/2/2017	92 (92-86, W at St. Francis (Pa.))
W&M scored 95+ points	2/16/2014	97 (97-44 W, vs. UNCW)
<b>Opponent scored 80+</b>	<b>1/6/2019</b>	<b>88 (74-88, L at Northeastern)</b>
Opponent scored 85+	2/2/2017	86 (41-86, L vs. James Madison)
Opponent scored 90+	11/17/2017	92 (92-81 L, at St. John's)
<b>W&amp;M grabbed 50+ rebounds</b>	<b>11/27/2018</b>	<b>58 (63-43 W, vs. East Carolina)</b>
W&M grabbed 60+ rebounds	12/21/2006	60 (73-58 W, at Norfolk State)
<b>Held an Opponent to 50 pts. or less</b>	<b>12/21/2018</b>	<b>44 (55-44, W at Norfolk State)</b>
Held an Opponent to 40 pts. or less	12/3/2016	39 (67-39, W vs. Richmond)
<b>W&amp;M was held under 50 pts.</b>	<b>1/25/2019</b>	<b>48 (48-65 L, at James Madison)</b>
<b>Shot 50% from the field</b>	<b>11/17/2018</b>	<b>51.0% (26-for-51) (65-49, W at Loyola)</b>
<b>Shot 80-89% from the foul line (8 or more attempts)</b>	<b>2/3/2019</b>	<b>88.2% (15-for-17) (58-62, L at Drexel)</b>
Shot 90-99% from the foul line (8 or more attempts)	2/9/2018	90.0 (9-for-10) (59-68, L at Delaware)
<b>Shot 100% from the foul line (8 or more attempts)</b>	<b>1/25/2019</b>	<b>100% (16-for-16) (48-65, L at James Madison)</b>
<b>Had a 20-pt. win</b>	<b>11/27/2018</b>	<b>20 (63-43 W, vs. East Carolina)</b>
Had a 30-pt. win	11/28/2016	34 (W, 82-48 vs. Delaware State)
Had a 40-pt. win	2/16/2014	53 (97-44 W, vs. UNCW)
Had a 50-pt. win	2/16/2014	53 (97-44 W, vs. UNCW)
Had a 20-pt. loss	3/1/2018	21 (L, 61-82 at Elon)
Had a 30-pt. loss	2/2/2018	45 (L, 41-86 vs. James Madison)
An overtime win	11/21/2017	71-65, W at East Carolina
<b>An overtime loss</b>	<b>2/8/2019</b>	<b>77-79, L at Charleston (2ot)</b>
<b>A double-overtime game</b>	<b>2/8/2019</b>	<b>77-79, L at Charleston</b>
A triple-overtime game	11/29/1999	77-83, L at VCU
10-game winning streak	2016-17	11 (11/18/2016-1/6/17)
5-game winning streak	2017-18	7 (11/21/2017-12/21/2017)
5-game losing streak	2017-18	7 (2/16/2018-11/12/2018)
10-game losing streak	2012-13	11 (11/25/2012-1/20/2013)

**Individual**

<b>20-24 pts.</b>	<b>24, Eva Hodgson at UNCW, 2/10/19</b>
<b>25-29 pts.</b>	<b>25, Bianca Boggs vs. UNCW, 1/11/19</b>
30-34 pts.	33, Bianca Boggs at St. Francis (Pa.), 12/2/17
35-39 pts.	39, Lynn Norenberg at Virginia Wesleyan, 11/15/80
40+ pts.	53, Bebe Fisher vs. Norfolk Division, 2/13/52
5 players in double figures	Bianca Boggs (26), Victoria Reynolds (15), Abby Rendle (12), Nari Garner (11), Jenna Green (10) vs. College of Charleston, 1/26/18
Two players with 20 pts. or more	Jenna Green (22) and Bianca Boggs (21) at Towson, 2/4/18
<b>Player with 10-14 rebounds</b>	<b>10, Bianca Boggs at UNCW, 2/10/19</b>
<b>Player with 15-19 rebounds</b>	<b>15, Victoria Reynolds vs. East Carolina, 11/27/18</b>
Player with 20 or more rebounds	21, Emily Correal vs. George Mason, 3/16/13
<b>Two players with 10 or more rebounds</b>	<b>15, Victoria Reynolds, 12, Nyla Pollard, &amp; 11 Bianca Boggs vs. ECU, 11/27/18</b>
A player with a triple-double	Abby Rendle (25 pts, 17 reb, 10 blks) at East Carolina, 11/21/17
<b>A player with a double-double</b>	<b>Bianca Boggs (16 pts, 10 reb) at UNCW, 2/10/19</b>
<b>Two players with double-doubles</b>	<b>Victoria Reynolds (15 pts, 15 reb) &amp; Nyla Pollard (10 pts, 12 reb.) vs. ECU, 11/27/18</b>
100% from the field (min. 5 made)	7-for-7, Abby Rendle vs. Drexel, 3/1/17
<b>100% from foul line (min. 5 made)</b>	<b>6-for-6, Gabby Rogers at Charleston, 2/8/19</b>
<b>5-7 Assists</b>	<b>5, Bianca Boggs vs. Delaware, 2/1/19</b>
8-9 Assists	8, Bianca Boggs at Delaware, 2/9/18
10+ Assists	11, Jenna Green vs. College of Charleston, 1/26/18
<b>5 or more steals</b>	<b>5, Bianca Boggs at UNCW, 2/10/19</b>
5-9 blocks	6, Abby Rendle at Delaware, 2/9/18
10+ blocks	11, Abby Rendle vs. College of Charleston, 1/26/18

BOLD - Happened in the 2018-19 season

**LIBBY UNDERWOOD**

So. • Guard • 5-9  
Rye, New Hampshire

**SYDNEY WAGNER**

So. • Guard • 5-6  
Phoenixville, Pa.

**BIANCA BOGGS**

Sr. • Guard • 5-5  
Waldorf, Md.

**ASHLEY TAYLOR**

Jr. • Guard • 6-0  
Charlottesville, Va.

**MISHA JONES**

Sr. • Guard/Forward • 5-9  
Manassas Park, Va.

**EVA HODGSON**

Fr. • Guard • 5-9  
Rindge, New Hampshire

**NYLA POLLARD**

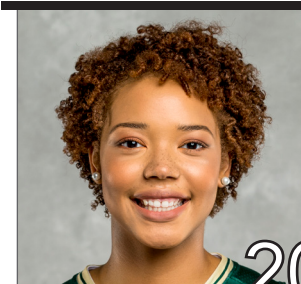
So. • Guard • 5-9  
Virginia Beach, Va.

**HARPER BIRDSONG**

R-So. • Guard • 5-10  
Suffolk, Va.

**EMMA KRUSE**

Jr. • Center • 6-3  
Port Tobacco, Md.

**CHANDLER SMITH**

Sr. • Center • 6-3  
Port Tobacco, Md.

**BAILEY EICHNER**

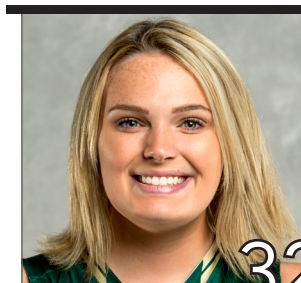
So. • Guard/Forward • 6-1  
Cudahy, Wisc.

**GABBY ROGERS**

Fr. • Center • 6-1  
Dallas, Texas

**VICTORIA REYNOLDS**

Jr. • Forward • 5-10  
Fairfax, Va.

**CAROLINE STOVER**

Fr. • Center • 6-3  
Plympton Mass.

**ED SWANSON**

Sixth Season at W&M  
29th Overall

**PRONUNCIATION GUIDE**

Bailey **EICHNER**    IKE-ner

Lynne **KOKOSKI**  
Kah-kaw-ski

**CHANEL** Murchison    Shh-nell





ED

SWANSON

## HEAD COACH

29<sup>TH</sup> SEASON OVERALL

6<sup>TH</sup> SEASON AT W&M

## PROFILE

Wife: Marion

Children: Connor and Matthew

### Education

Sacred Heart, 1989

### Coaching Career

Sacred Heart (1989-13)

William &amp; Mary (2013-P)

## CAREER HIGHLIGHTS

- Three NCAA Tournament Appearances
- Led W&M to 1st Division I Postseason berth in the WBI.
- Led W&M to a school record 20 wins in 2016-17
- 2016-17 VaSID Coach of the Year
- Six Postseason Appearances
- Four regular season conference championships and three postseason league titles
- 2009 New England Hall of Fame Inductee
- Eight 20-win seasons
- Five-time Conference Coach of the Year
- On five occasions, his teams have earned to the WBCA Academic Top 25 Team Honor

Ed Swanson enters his sixth season with the Green and Gold. He became the fifth Division I head women's basketball coach in William and Mary history on May 7, 2013. Prior to coming to Williamsburg, he spent 23 years transforming Sacred Heart University from a Division II program into a one of the top teams in the Northeast Conference. Swanson owns a career record of 464-327 (.587).

The success continued for the Tribe during the 2017-18 season. W&M won 16 games, which is tied for the fourth most in school history, and posted its second straight winning season for the first time since 2005-06 and 2006-07. His first recruiting class became the winningest class in school history with the team's victory over College of Charleston on Jan. 26. The seniors went onto win 66 games during their four year career. The Tribe raced out to an 11-2 start for the third straight season, which equaled the best 13-game start in school history, and led the CAA in blocked shots (218) and blocked shots per game (7.3), which ranked fourth and third in the NCAA, respectively. Both numbers are single-season school records. Individually, he mentored three players to five All-CAA awards, including All-CAA First-Team selection Bianca Boggs, who became the first Tribe player in a decade to be named to the league's first-team. Additionally, Boggs was named to the league's all-defensive team, while Abby Rendle claimed a spot on the All-CAA Third-Team, and All-Defensive Team, and freshman Nyla Pollard was picked to the CAA All-Rookie team.

Swanson led the Tribe to one of its best seasons in program history in 2016-17. The Tribe tied a school record with 20 wins, while winning a CAA Tournament game for the first time since 2009, and advancing to the CAA Semifinals for the first-time since 2001. Under his leadership, the Tribe won 11-straight games, which is the longest single-23056season streak in school history, from Nov. 18, 2016-Jan. 2, 2017. W&M had four players claim seven all-conference awards this season, including seniors Alexandra Masaquel and Marlena Tremba, who each earned second-team citations. Additionally, Masaquel was tabbed the Richmond Times-Dispatch All-State Second-Team, while Tremba earned VaSID All-State Second-Team honors. For his efforts, VaSID honored him as the Virginia State Coach of the Year.

Once again Swanson's third season was one for the record books. The Tribe raced out to its best start in school history with an 11-2 record. W&M went onto again to win the fourth most wins in school history with 15. For the second straight season the Tribe broke the blocks and assist record, by tying the single season assist record (466) and broke the school record for blocks with 148. During the season junior Marlena Tremba became the 15th player in school history to break the 1000-point barrier. Individually, four players earned All-CAA awards as junior Alexandra Masaquel was tabbed to the second-team and all-defensive team, Tremba earned third-team honors, and freshman Bianca Boggs picked up a spot on the all-rookie team. The Tribe was also rewarded for its hard work in the classroom as Masaquel, Tremba, and sophomore Jenna Green earned all-academic team honors.

Swanson's second year with the Green and Gold was one for the record books. The Tribe racked up 15 wins, the fourth-most in school history, on its way to its first-ever postseason appearances with bid in the Women's Basketball Invitational. The Green and Gold had a seven-win turnaround, while setting three school records for assists (466), blocked shots, (143), blocked shots per game (4.5). Individually he helped lead four players to five All-CAA awards. Sophomore Marlena Tremba was named to the All-CAA Third-Team, senior Jazmen Boone was named to the All-Defensive Team, freshman Abby Rendle to the All-Rookie and All-Defensive team, and senior Kyla Kerstetter earned all-academic honors.

In his first season with the Tribe, Swanson led a young team to eight victories in a seven-seed in the CAA Tournament. The Green and Gold finished in the top 10 nationally in steals per game, while Jazmen Boone also ranked in the top 20 in the NCAA in the same category. Under his guidance Kaitlyn Mathieu garnered Third-Team All-Colonial Athletic Association honors, and went on to sign a professional contract with a team in Germany. In addition, guard Marlena Tremba went onto win CAA Rookie of the Year, and was named to the all-rookie squad. Boone was named to the all-defensive team, while she and Kyla Kerstetter took home all-academic honors.

Swanson oversaw Sacred Heart's transition from Division II to Division I in 1999-00, and the program took off under his direction. Over Sacred Heart's 14 years in Division I, Swanson led SHU



to a 280-145 record (.664), including a 190-62 (.754) record in the NEC. He departed as the NEC's all-time winningest head coach with all of his SHU teams finishing third or higher in the league standings. Swanson-lead teams have posted 13 straight winning seasons and 12 straight campaigns with 18 or more victories, including six with 20 or more wins. In 2009, he was inducted into the New England Basketball Hall of Fame.

In total, Swanson-coached players earned 19 All-NEC honors, including nine first-team awards, nine NEC All-Tournament Team honors, eight NEC All-Rookie Team selections, four NEC Rookies of the Year, three NEC Tournament MVPs and three NEC Players of the Year.

His teams have also enjoyed success in the classroom. On five occasions, the Pioneers were selected to the Women's Basketball Coaches Association (WBCA) Academic Top 25 Team Honor Roll, which has recognized outstanding academic performances from the top teams in each of the five collegiate divisions since 1995-96. On eight occasions since 2003, one of his players was a CoSIDA Academic All-District selection and two Pioneer players were named NEC Scholar-Athlete of the Year.

In 2012-13, Swanson led Sacred Heart to its third straight postseason appearance, and in the process, recorded his 400th career victory. His milestone win came on Feb. 12, 2013 as the Pioneers defeated Fairleigh Dickinson. SHU completed the season at 22-11, finishing second in the NEC with a 13-5 ledger and garnering a berth in the program's first Women's National Invitational Tournament (WNIT).

Sacred Heart claimed its third NEC Championship and advanced to the NCAA Tournament in 2011-12. The Pioneers also ranked 23rd nationally in the WBCA Academic Top 25 Team Honor Roll with a team GPA of 3.35. SHU compiled a season mark to 25-8, winning both the regular season and postseason crowns in the league as Swanson was named NEC Coach of the Year for the fourth time.

The Pioneers earned a berth in the 2011 Women's Basketball Invitational and finished the year at 18-13 with a 12-6 mark in the NEC. After a 0-5 start to the 2008-09 season, Swanson's Pioneers reeled off a 21-game winning streak, the longest in school history and second longest in the country, before finishing with 25-8 record. SHU completed the NEC regular season with a perfect 18-0 mark, becoming just the third team in the history of the conference to accomplish the feat. Swanson earned NEC Coach of the Year honors as Sacred Heart finished off an amazing season by capturing its second league title and trip to the NCAA Tournament over a four-year span. During the 2008-09 season, Swanson moved past former Mount St. Mary's head coach Bill Sheahan (124) as all-time leader in Northeast Conference wins and eclipsing the 300-win plateau in his career.

The 2005-06 season saw Swanson lead the Sacred Heart program to its first NCAA Tournament, capturing the NEC Championship in just its seventh season at the Division I level. Swanson guided the Pioneers to a school record 26-5 record, including a 16-2 NEC ledger. He also garnered career victory No. 250 during the season.

Under his leadership, Sacred Heart was one of the toughest teams on its home court, the William H. Pitt Center, which opened in 1997. During the Pitt Center's opening 16 seasons, Swanson's teams won 81.9 percent (185-41) of its home games. In 2011-12, SHU went 15-1 at home, a season bested only by a perfect 15-0 in 2005-06 and 14-0 in 2003-04. During the stretch, the Pioneers' home winning percentage at the Pitt Center ranked among the best nationally.

After directing the Pioneers to a 20-7 record — the program's first 20-win season — in 1995-96, Swanson was voted Coach of the Year in the New England Collegiate Conference (NECC) and the Women's Basketball Coaches Association's (WBCA) District I.

Swanson took the reins of the Sacred Heart University women's basketball program in 1990 and built the Pioneers into one of the top teams in the Northeast. He joined Dave Bike's men's basketball coaching staff at SHU in 1989, and, after becoming head coach of the Pioneer women's program in 1990, did double duty for three seasons before becoming the University's first full-time women's coach in 1993. Prior to Swanson's arrival,

## CAREER RECORD

YEAR	OVERALL RECORD	CONF. RECORD	CONF. FINISH	POST SEASON
1990-91	8-19	3-11	7th	
1991-92	11-16	5-9	T5th	
1992-93	16-13	7-7	4th	
1993-94	12-15	8-8	5th	
1994-95	11-16	7-9	5th	
1995-96	20-7	16-4	T2nd	
1996-97	14-14	10-8	5th	
1997-98	19-7	13-3	2nd	
1998-99	15-12	12-6	3rd	
1999-00	14-14	11-7	T3rd	
2000-01	15-14	11-7	T3rd	
2001-02	18-11	13-5	T2nd	
2002-03	18-10	12-6	T3rd	
2003-04	21-8	14-4	2nd	
2004-05	18-11	14-4	2nd	
2005-06	26-5	16-2	1st	NCAA
2006-07	22-10	15-3	T1st	
2007-08	19-11	14-4	3rd	
2008-09	25-8	18-0	1st	NCAA
2009-10	19-11	14-4	3rd	
2010-11	18-13	12-6	T3rd	WBI
2011-12	25-8	15-3	1st	NCAA
2012-13	22-11	13-5	2nd	WNIT
2013-14	8-21	5-11	8th	
2014-15	15-16	9-9	6th	WBI
2015-16	15-15	6-12	7th	
2016-17	20-11	9-9	4th	
2017-18	16-14	7-11	6th	
2018-19	11-11	4-7		
Career	491-352 (.582)	296-186 (.609)		
Division I	365-233 (.610)	231-121 (.656)		
W&M/CAA	85-88 (.491)	40-59 (.404)		

the Sacred Heart women's team compiled a 4-21 record. Under his guidance, the climb to Division II respectability was accomplished within three seasons, from 8-19 to 11-16 and, in 1992-93, to 16-13 — the program's first winning record in 11 seasons.

In his time at SHU, he was a four-time NEC Coach of the Year, led Sacred Heart to five postseason bids, including three NCAA Tournament appearances. Swanson guided the Pioneers to four NEC regular season crowns and three NEC tournament championships. SHU posted 20-win seasons seven times during his tenure, including five of the last eight years.

He earned a bachelor's degree in business from Sacred Heart in 1989. Also during his tenure at SHU, Swanson served as the moderator for the Pioneer Student-Athlete Council from 1998-01 and was the annual coordinator of commencement exercises since 2000. Swanson and his wife, Marion, have two sons, Connor and Matthew.



# #0 LIBBY UNDERWOOD

## SOPHOMORE - GUARD

### RYE, N.H. - PORTSMOUTH

#### >> UNDERWOOD'S CAREER HIGHS

**MINUTES**

 Season 13 vs. VCU, 11/6/18  
 Career 15 vs. USC Upstate, 12/5/17

**POINTS**

 Season 6 vs. VCU, 11/6/18  
 Career 8 vs. USC Upstate, 12/5/17

**REBOUNDS**

 Season 2 at James Madison, 1/25/19  
 Career 3 at Northeastern, 1/21/18

**FIELD GOALS**

 Season 3 vs. VCU, 11/6/18  
 Career 3 vs. VCU, 11/6/18

**3-POINT FIELD GOALS**

 Season -  
 Career 1 (3x) last time vs. Upstate 12/5/17

**FREE THROWS**

 Season 1 (2x) last time at NU, 1/6/18  
 Career 5 vs. USC Upstate, 12/5/17

**ASSISTS**

 Season 1 (2x) last time at JMU, 1/25/19  
 Career 3 vs. USC Upstate, 12/5/17

**STEALS**

 Season 1 at Old Dominion, 12/8/18  
 Career 1 (3x) last time at ODU, 12/8/18

**BLOCKS**

 Season 1 vs. VCU, 11/6/18  
 Career 1 vs. VCU, 11/6/18

**MISCELLANEOUS**

 Career in Double Figures 0  
 2018-19 in Double Figures 0

#### > 2018-19 GAME-BY-GAME

Opp	Date	GS	Min	FG-A	3FG-A	FTA	Reb.	A	TO	BLK	STL	Pts
VCU	11/6	14	3-4	0-1	0-0	0	1	1	0	1	6	
HOW	11/12	2	0-1	0-0	0-0	1	0	0	0	0	0	
at Loy	11/17	11	0-1	0-0	0-0	0	0	0	0	0	0	
at DC	11/24	6	0-1	0-1	0-0	0	0	0	0	0	0	
ECU	11/27		DNP - COACH'S DECISION									
at Hart	11/30	2	0-0	0-0	0-0	0	0	0	0	0	0	
at Fair	12/2		DNP - COACH'S DECISION									
UOFR	12/5	1	1-1	0-0	0-0	0	0	0	0	0	2	
at ODU	12/8	10	0-1	0-0	1-2	0	0	2	0	1	1	
at NSU	12/21	5	0-0	0-0	0-0	0	0	2	0	0	0	
GW	12/28	3	0-0	0-0	0-0	0	0	0	0	0	0	
at Hof	1/4		DNP - COACH'S DECISION									
at NU	1/6	8	0-1	0-1	1-2	0	0	1	0	0	1	
UNCW	1/11		DNP - COACH'S DECISION									
COFC	1/13		DNP - COACH'S DECISION									
ELON	1/20		DNP - COACH'S DECISION									
at JMU	1/25	2	0-2	0-0	0-0	2	1	0	0	0	0	
at Tow	1/27		DNP - COACH'S DECISION									
DEL	2/1		DNP - COACH'S DECISION									
DREXEL	2/3	3	0-1	0-0	0-0	0	0	0	0	0	0	
at CofC	2/8		DNP - COACH'S DECISION									
at UNCW	2/10		DNP - COACH'S DECISION									

#### >> UNDERWOOD'S CAREER STATISTICS

Season	GP	GS	Min/Avg	FG-FGA	Pct	3pt-Att	Pct	FT-FTA	Pct	Off	Def	Reb	Avg	PF	FO	A	TO	Blk	S	TP	Avg
2017-18	27	0	162/6.0	6-30	.200	3-15	.200	14-22	.636	2	14	16	0.6	10	0	8	21	0	2	29	1.1
2018-19	12	0	65/5.4	4-13	.308	0-3	.000	2-4	.500	3	0	3	0.3	1	0	2	6	1	1	10	0.8
<b>CAREER</b>	<b>39</b>	<b>0</b>	<b>227/5.8</b>	<b>10-43</b>	<b>.233</b>	<b>3-18</b>	<b>.167</b>	<b>16-26</b>	<b>.615</b>	<b>5</b>	<b>14</b>	<b>19</b>	<b>0.5</b>	<b>11</b>	<b>0</b>	<b>10</b>	<b>27</b>	<b>1</b>	<b>3</b>	<b>39</b>	<b>1.0</b>



# #2 BIANCA BOGGS

## SENIOR - GUARD

### WALDORF, MD. - ST. MARY'S RYKEN

#### >> BOGGS' CAREER HIGHS

**MINUTES**

 Season 48 at Charleston, 2/8/19  
 Career 48 at Charleston, 2/8/19

**POINTS**

 Season 26 (2x) last time vs. GW, 12/28/18  
 Career 33 at St. Francis (Pa.), 12/2/17

**REBOUNDS**

 Season 11 (2x) last time at JMU, 1/25/19  
 Career 11 (3x) last time at JMU, 1/25/19

**FIELD GOALS**

 Season 10 (2x) last time vs. GW, 12/28/18  
 Career 12 at St. Francis (Pa.), 12/2/17

**3-POINT FIELD GOALS**

 Season 4 (2x) last time vs. CofC, 1/13/19  
 Career 4 (4x) last time vs. CofC, 1/13/19

**FREE THROWS**

 Season 7(2x) last time vs. UNCW, 1/11/19  
 Career 8 (2x) last time vs. UD, 2/23/18

**ASSISTS**

 Season 7 (2x) last time at DC, 11/24/18  
 Career 8 at Delaware, 2/9/18

**STEALS**

 Season 6 at Hartford, 11/30/18  
 Career 7 vs. Charleston, 1/26/18

**BLOCKS**

 Season 3 vs. GW, 12/28/18  
 Career 4 vs. Hofstra, 1/28/18

**MISCELLANEOUS**

 Career in Double Figures 61  
 2018-19 in Double Figures 19

#### >> 2018-19 GAME-BY-GAME

Opp	Date	GS	Min	FG-A	3FG-A	FT-A	Reb.	A	TO	BLK	STL	Pts
VCU	11/6	*	34	6-16	1-3	2-3	6	4	3	1	5	16
HOW	11/12	*	35	10-22	1-5	5-5	9	7	4	0	1	26
at Loy	11/17	*	35	5-9	2-4	2-2	5	3	1	0	0	14
at DC	11/24	*	36	6-12	1-3	5-5	10	7	9	2	3	18
ECU	11/27	*	37	4-11	0-3	1-2	11	5	6	1	1	9
at Hart	11/30	*	39	3-15	1-5	5-6	6	2	4	0	6	12
at Fair	12/2	*	37	8-12	2-4	4-8	5	2	7	0	3	22
UOFR	12/5	*	32	2-7	0-0	1-2	1	6	3	2	2	8
at ODU	12/8	*	24	7-15	0-3	3-3	3	2	2	0	3	17
at NSU	12/21	*	33	4-10	0-2	2-5	8	4	6	1	4	10
GW	12/28	*	34	10-16	3-5	3-3	10	3	3	3	2	26
at Hof	1/4	*	39	7-14	1-4	7-7	10	3	6	1	0	22
at NU	1/6	*	25	6-15	4-7	5-6	6	4	2	0	3	21
UNCW	1/11	*	36	8-16	2-5	7-9	6	2	2	2	2	25
COFC	1/13	*	39	6-16	4-8	2-8	8	4	5	0	2	18
ELON	1/20	*	27	4-8	1-2	4-6	3	3	1	0	0	13
at JMU	1/25	*	33	2-18	0-3	4-4	11	3	3	9	1	8
at Tow	1/27	*	33	7-17	3-6	5-11	7	3	4	0	3	22
DEL	2/1	*	37	2-9	1-2	6-8	8	5	6	1	1	11
DREXEL	2/3	*	39	6-10	1-2	4-5	9	3	3	1	1	17
at CofC	2/8	*	48	9-19	0-3	5-8	6	4	9	2	5	23
at UNCW	2/10*		38	7-15	1-5	1-3	10	3	5	1	5	16

#### >> BOGGS' CAREER STATISTICS

Season	GP	GS	Min/Avg	FG-FGA	Pct	3pt-Att	Pct	FT-FTA	Pct	Off	Def	Reb	Avg	PF	FO	A	TO	Blk	S	TP	Avg
2015-16	30	24	802/26.7	68-233	.292	17-56	.304	70-102	.686	38	57	95	3.2	81	5	45	55	10	56	223	7.4
2016-17	31	26	734/23.7	82-214	.383	22-74	.297	60-76	.789	44	65	109	3.5	60	0	60	76	17	54	246	7.9
2017-18	30	30	907/30.2	156-373	.418	41-129	.318	103-139	.741	46	91	137	4.6	85	1	88	111	24	65	456	15.2
2018-19	22	22	773/35.1	129-305	.423	30-89	.337	85-121	.702	31	127	158	7.2	52	2	82	93	18	53	373	17.0
<b>CAREER</b>	<b>113</b>	<b>102</b>	<b>3216/28.5</b>	<b>435-1125</b>	<b>.387</b>	<b>110-348</b>	<b>.316</b>	<b>318-438</b>	<b>.726</b>	<b>159</b>	<b>340</b>	<b>499</b>	<b>4.4</b>	<b>278</b>	<b>8</b>	<b>275</b>	<b>335</b>	<b>69</b>	<b>228</b>	<b>1298</b>	<b>11.5</b>





# #3 ASHLEY TAYLOR

## JUNIOR - GUARD

CHARLOTTESVILLE, VA. - ST. ANNE'S-BELFIELD

### >> TAYLOR'S CAREER HIGHS

MINUTES			FREE THROWS		
Season	6	vs. GW, 12/28/18	Season	1	vs. GW, 12/28/18
Career	9	vs. USC Upstate, 12/5/17	Career	1	vs. GW, 12/28/18
POINTS			ASSISTS		
Season	1	vs. GW, 12/28/18	Season	-	-
Career	3	vs. USC Upstate, 12/5/17	Career	1	(4x) last time at CofC, 12/29/17
REBOUNDS			STEALS		
Season	-	-	Season	-	-
Career	2	vs. Loyola, 11/25/17	Career	1	vs. Davidson, 11/27/17
FIELD GOALS			BLOCKS		
Season	-	-	Season	-	-
Career	1	(2x) last time at Elon, 3/1/18	Career	-	-
3-POINT FIELD GOALS			MISCELLANEOUS		
Season	-	-	Career in Double Figures	0	0
Career	1	vs. USC Upstate, 12/5/17	2018-19 in Double Figures	0	0

### >> TAYLOR'S CAREER STATISTICS

Season	GP	GS	Min/Avg	FG-FGA	Pct	3pt-Att	Pct	FT-FTA	Pct	Off	Def	Reb	Avg	PF	FO	A	TO	Blk	S	TP	Avg
2016-17	7	0	22/3.1	0-6	.000	0-4	.000	0-0	.000	1	2	3	0.4	0	0	2	1	0	0	0	0.0
2017-18	13	0	32/2.5	2-9	.222	1-3	.333	0-0	.000	0	7	7	0.5	1	0	2	4	0	1	5	0.4
2018-19	4	0	11/2.8	0-4	.000	0-3	.000	1-2	.500	0	0	0	0.0	0	0	0	0	0	1	0.3	
CAREER	25	0	65/2.7	2-20	.105	1-10	.100	1-2	.500	1	9	10	0.4	1	0	4	5	0	1	6	0.3

### >> 2018-19 GAME-BY-GAME

Opp	Date	GS	Min	FG-A	3FG-A	FT-A	Reb.	A	TO	BLK	STL	Pts
VCU	11/6			DNP	-	COACH'S DECISION						
HOW	11/12			DNP	-	COACH'S DECISION						
at Loy	11/17	1	0-0	0-0	0-0	0	0	0	0	0	0	0
at DC	11/24			DNP	-	COACH'S DECISION						
ECU	11/27			DNP	-	COACH'S DECISION						
at Hart	11/30			DNP	-	COACH'S DECISION						
at Fair	12/2			DNP	-	COACH'S DECISION						
UOFR	12/5			DNP	-	COACH'S DECISION						
at ODU	12/8	1	0-1	0-1	0-0	0	0	0	0	0	0	0
at NSU	12/21			DNP	-	COACH'S DECISION						
GW	12/28	6	0-3	0-2	1-2	0	0	0	0	0	1	
at Hof	1/4			DNP	-	COACH'S DECISION						
at NU	1/6			DNP	-	COACH'S DECISION						
UNCW	1/11			DNP	-	COACH'S DECISION						
COFC	1/13			DNP	-	COACH'S DECISION						
ELON	1/20			DNP	-	COACH'S DECISION						
at JMU	1/25	3	0-0	0-0	0-0	0	0	0	0	0	0	0
at Tow	1/27			DNP	-	COACH'S DECISION						
DEL	2/1			DNP	-	COACH'S DECISION						
DREXEL	2/3			DNP	-	COACH'S DECISION						
at CofC	2/8			DNP	-	COACH'S DECISION						
at UNCW	2/10			DNP	-	COACH'S DECISION						



# #5 MISHA JONES

## SENIOR - GUARD/FORWARD

MANASSAS PARK, VA. - BATTLEFIELD

### >> JONES' CAREER HIGHS

MINUTES			FREE THROWS		
Season	25	at Towson, 1/27/19	Season	6	at Towson, 1/27/19
Career	27	vs. Delaware, 2/23/18	Career	6	at Towson, 1/27/19
POINTS			ASSISTS		
Season	9	(2x) last vs. UNCW, 1/11/19	Season	4	at Old Dominion, 12/8/18
Career	9	(2x) last vs. UNCW, 1/11/19	Career	4	(3x) last time at ODU, 12/8/18
REBOUNDS			STEALS		
Season	8	at Towson, 1/27/19	Season	2	at Hofstra, 1/4/19
Career	8	at Towson, 1/27/19	Career	2	(2x) last time at Hofstra, 1/4/19
FIELD GOALS			BLOCKS		
Season	3	(2x) last vs. UNCW, 1/11/19	Season	1	(5x) last time at CofC, 2/8/19
Career	3	(2x) last vs. UNCW, 1/11/19	Career	1	(6x) last time at CofC, 2/8/19
3-POINT FIELD GOALS			MISCELLANEOUS		
Season	3	vs. UNCW, 1/11/19	Career in Double Figures	0	0
Career	3	vs. UNCW, 1/11/19	2018-19 in Double Figures	0	0

### >> 2018-19 GAME-BY-GAME

Opp	Date	GS	Min	FG-A	3FG-A	FT-A	Reb.	A	TO	BLK	STL	Pts
VCU	11/6	4	1-1	1-1	1-2	4	0	0	0	0	4	
HOW	11/12	14	3-5	2-4	1-1	3	2	2	1	0	9	
at Loy	11/17	13	2-4	0-2	1-2	2	1	0	0	0	5	
at DC	11/24	11	1-2	1-2	0-0	1	3	1	1	0	3	
ECU	11/27	9	0-3	0-3	0-0	2	0	0	0	0	0	
at Hart	11/30	12	1-2	1-1	0-0	4	1	0	0	0	3	
at Fair	12/2	8	0-1	0-1	0-0	1	0	0	0	0	0	
UOFR	12/5	6	0-0	0-0	0-0	1	0	1	0	0	0	
at ODU	12/8	13	2-5	0-1	0-0	4	4	1	0	0	4	
at NSU	12/21	8	0-1	0-1	0-0	0	0	1	0	1	0	
GW	12/28	*	12	1-2	0-0	2-2	1	0	1	0	4	
at Hof	1/4	*	6	1-1	1-1	0-0	1	1	0	0	3	
at NU	1/6	*	20	2-6	1-3	1-2	3	2	0	0	1	6
UNCW	1/11	24	3-5	3-5	0-0	2	3	3	1	0	9	
COFC	1/13	19	2-5	2-4	0-0	2	2	1	0	0	6	
ELON	1/20	15	2-3	2-2	2-2	2	2	0	2	0	8	
at JMU	1/25	22	2-3	2-3	0-0	3	0	0	0	0	6	
at Tow	1/27	22	1-5	0-4	6-6	8	2	2	0	0	8	
DEL	2/1	20	1-2	1-2	0-0	2	0	3	0	0	3	
DREXEL	2/3	10	0-0	0-0	0-0	1	2	0	1	0	0	
at CofC	2/8	15	1-4	0-3	0-0	1	1	1	1	0	2	
at UNCW	2/10	5	0-1	0-1	0-0	0	0	0	0	0	0	

### >> JONES' CAREER STATISTICS

Season	GP	GS	Min/Avg	FG-FGA	Pct	3pt-Att	Pct	FT-FTA	Pct	Off	Def	Reb	Avg	PF	FO	A	TO	Blk	S	TP	Avg
2015-16	27	0	180/6.7	12-36	.333	5-20	.250	7-10	.700	1	16	17	0.6	15	0	8	9	0	4	36	1.3
2016-17																					
2017-18	28	0	201/7.2	13-41	.317	7-26	.269	10-11	.909	6	26	32	1.1	29	0	15	17	1	7	43	1.5
2018-19	22	3	290/13.2	26-61	.426	17-44	.386	14-16	.875	13	31	44	2.0	43	0	26	17	5	3	83	3.8
<b>CAREER</b>	<b>77</b>	<b>3</b>	<b>671/8.7</b>	<b>51-138</b>	<b>.370</b>	<b>29-90</b>	<b>.322</b>	<b>31-37</b>	<b>.838</b>	<b>20</b>	<b>73</b>	<b>93</b>	<b>1.2</b>	<b>87</b>	<b>0</b>	<b>49</b>	<b>43</b>	<b>6</b>	<b>14</b>	<b>162</b>	<b>2.1</b>



# #10 EVA HODGSON

**FRESHMAN - GUARD**
**RINDGE, N.H. - NEW HAMPTON SCHOOL**
**>> HODGSON'S CAREER HIGHS**
**MINUTES**

 Season 46 at Charleston, 2/8/19  
 Career 46 at Charleston, 2/8/19

**POINTS**

 Season 24 at UNCW, 2/10/19  
 Career 24 at UNCW, 2/10/19

**REBOUNDS**

 Season 6 (2x) last time vs. Drexel, 2/3/19  
 Career 6 (2x) last time vs. Drexel, 2/3/19

**FIELD GOALS**

 Season 9 at UNCW, 2/10/19  
 Career 9 at UNCW, 2/10/19

**3-POINT FIELD GOALS**

 Season 4 at UNCW, 2/10/19  
 Career 4 at UNCW, 2/10/19

**FREE THROWS**

 Season 8 (2x) last time vs. Drexel, 2/3/19  
 Career 8 (2x) last time vs. Drexel, 2/3/19

**ASSISTS**

 Season 6 (3x) last time vs. Elon, 1/20/19  
 Career 6 (3x) last time vs. Elon, 1/20/19

**STEALS**

 Season 4 at Fairfield, 12/2/18  
 Career 4 at Fairfield, 12/2/18

**BLOCKS**

 Season 3 vs. Drexel, 2/3/19  
 Career 3 vs. Drexel, 2/3/19

**MISCELLANEOUS**

 Career in Double Figures 12  
 2018-19 in Double Figures 12

**> 2018-19 GAME-BY-GAME**

Opp	Date	GS	Min	FG-A	3FG-A	FT-A	Reb.	A	TO	BLK	STL	Pts
VCU	11/6	*	28	4-8	0-2	0-0	0	3	2	0	2	8
HOW	11/12	*	35	2-6	1-3	1-2	5	4	4	0	2	6
at Loy	11/17	*	30	2-7	0-1	1-1	2	5	2	1	1	5
at DC	11/24	*	30	0-4	0-1	0-0	3	2	4	0	0	0
ECU	11/27	*	26	4-4	2-2	3-4	1	0	2	1	0	13
at Hart	11/30	*	34	4-12	1-5	5-7	2	2	4	0	3	14
at Fair	12/2	*	32	0-4	0-2	3-4	5	4	4	0	4	3
UOFR	12/5	*	32	5-11	1-4	4-4	4	6	3	1	2	15
at ODU	12/8	*	22	2-5	0-2	0-2	1	3	1	0	0	4
at NSU	12/21	*	14	2-3	1-1	0-0	1	2	2	0	0	5
GW	12/28	*	32	4-7	2-3	1-1	4	6	2	1	0	11
at Hof	1/4	*	39	6-14	1-3	5-6	1	2	3	1	2	18
at NU	1/6	*	34	4-4	3-3	5-6	4	2	2	0	2	16
UNCW	1/11	*	27	2-6	2-5	0-0	0	1	2	1	2	6
COFC	1/13	*	17	1-4	0-1	0-0	1	1	5	1	0	2
ELON	1/20	*	37	2-7	0-2	0-0	4	6	2	0	2	4
at JMU	1/25	*	27	2-6	1-4	8-8	4	1	4	0	1	13
at Tow	1/27	*	39	4-10	0-1	5-6	6	5	1	1	0	13
DEL	2/1	*	38	3-7	1-1	4-4	1	4	1	0	2	11
DREXEL	2/3	*	40	2-5	0-1	8-8	6	4	2	3	3	12
at CofC	2/8	*	46	5-9	2-2	1-2	2	2	2	0	3	13
atUNCW	2/10*		38	7-15	1-5	2-2	5	2	6	0	0	24

**>> HODGSON'S CAREER STATISTICS**

Season	GP	GS	Min/Avg	FG-FGA	Pct	3pt-Att	Pct	FT-FTA	Pct	Off	Def	Reb	Avg	PF	FO	A	TO	Blk	S	TP	Avg
2018-19	22	22	695/31.6	69-158	.437	22-55	.400	56-68	.824	21	41	62	2.8	59	1	67	59	11	30	216	9.8
<b>CAREER</b>	<b>22</b>	<b>22</b>	<b>695/31.6</b>	<b>69-158</b>	<b>.437</b>	<b>22-55</b>	<b>.400</b>	<b>56-68</b>	<b>.824</b>	<b>21</b>	<b>41</b>	<b>62</b>	<b>2.8</b>	<b>59</b>	<b>1</b>	<b>67</b>	<b>59</b>	<b>11</b>	<b>30</b>	<b>216</b>	<b>9.8</b>



# #11 NYLA POLLARD

**SOPHOMORE - GUARD**
**VIRGINIA BEACH, VA. - PRINCESS ANNE**
**>> POLLARD'S CAREER HIGHS**
**MINUTES**

 Season 38 at Hofstra, 1/4/19  
 Career 38 at Hofstra, 1/4/19

**POINTS**

 Season 10 vs. East Carolina, 11/27/18  
 Career 14 vs. USC Upstate, 12/5/17

**REBOUNDS**

 Season 12 vs. East Carolina, 11/27/18  
 Career 12 vs. East Carolina, 11/27/18

**FIELD GOALS**

 Season 4 (2x) last time vs. CofC, 1/19/13  
 Career 6 vs. USC Upstate, 12/5/17

**3-POINT FIELD GOALS**

 Season 2 (2x) last vs. UNCW, 1/11/19  
 Career 2 (6x) last vs. UNCW, 1/11/19

**FREE THROWS**

 Season 6 vs. East Carolina, 11/27/18  
 Career 6 vs. East Carolina, 11/27/18

**ASSISTS**

 Season 6 vs. UNCW, 1/11/19  
 Career 6 vs. UNCW, 1/11/19

**STEALS**

 Season 3 (2x) last time vs. CofC, 2/8/19  
 Career 4 vs. Davidson, 11/27/17

**BLOCKS**

 Season 1 (3x) last time vs. Elon, 1/20/19  
 Career 1 (7x) last time vs. Elon, 1/20/19

**MISCELLANEOUS**

 Career in Double Figures 4  
 2018-19 in Double Figures 1

**>> 2018-19 GAME-BY-GAME**

Opp	Date	GS	Min	FG-A	3FG-A	FT-A	Reb.	A	TO	BLK	STL	Pts
VCU	11/6		19	2-4	1-1	0-1	1	0	0	0	1	5
HOW	11/12		34	3-7	2-3	0-0	3	2	2	0	2	8
at Loy	11/17		23	4-6	1-2	0-0	2	4	1	0	1	9
at DC	11/24		25	1-4	0-2	0-1	1	1	2	0	0	2
ECU	11/27	*	35	2-9	0-3	6-8	12	2	4	1	0	10
at Hart	11/30	*	25	0-6	0-3	0-0	3	2	2	0	0	0
at Fair	12/2	*	27	0-3	0-0	2-4	3	3	3	0	2	2
UOFR	12/5	*	35	2-5	1-4	0-0	2	2	3	0	3	5
at ODU	12/8	*	20	0-2	0-1	2-2	0	4	2	0	2	2
at NSU	12/21	*	37	2-6	0-2	2-2	2	4	0	0	1	6
GW	12/28	*	33	1-7	0-2	0-0	1	3	2	0	1	2
at Hof	1/4	*	38	1-4	1-1	1-2	7	3	1	0	2	4
at NU	1/6	*	13	0-2	0-1	0-0	0	0	0	0	0	0
UNCW	1/11	*	36	2-4	2-3	3-4	7	6	3	0	0	9
COFC	1/13	*	37	4-9	0-3	1-2	2	4	0	1	1	9
ELON	1/20	*	33	1-6	0-3	0-0	1	2	3	1	0	2
at JMU	1/25	*	25	0-3	0-1	2-2	1	1	2	0	0	2
at Tow	1/27	*	34	2-3	1-1	3-4	2	4	2	0	1	8
DEL	2/1	*	22	1-6	1-2	0-0	1	4	1	0	2	3
DREXEL	2/3	*	21	2-6	0-2	1-2	4	1	2	0	0	5
at CofC	2/8	*	31	0-3	0-3	0-0	4	3	4	0	3	0
atUNCW	2/10*		16	0-3	0-1	0-0	2	2	1	0	0	0

**>> POLLARD'S CAREER STATISTICS**

Season	GP	GS	Min/Avg	FG-FGA	Pct	3pt-Att	Pct	FT-FTA	Pct	Off	Def	Reb	Avg	PF	FO	A	TO	Blk	S	TP	Avg
2017-18	30	27	658/21.9	44-121	.364	14-48	.292	20-27	.741	22	31	53	1.8	71	3	46	40	4	15	122	4.1
2018-19	22	18	620/28.2	30-108	.278	10-44	.227	23-34	.676	23	38	61	2.8	48	2	58	40	3	22	93	4.2
<b>CAREER</b>	<b>52</b>	<b>45</b>	<b>1278/24.6</b>	<b>74-229</b>	<b>.323</b>	<b>24-92</b>	<b>.261</b>	<b>43-61</b>	<b>.705</b>	<b>45</b>	<b>69</b>	<b>114</b>	<b>2.2</b>	<b>119</b>	<b>5</b>	<b>104</b>	<b>80</b>	<b>7</b>	<b>37</b>	<b>215</b>	<b>4.1</b>



# #12 HARPER BIRDSONG

## SOPHOMORE - GUARD

### SUFFOLK, VA. - NANSEMOND SUFFOLK (George Washington)

#### >> BIRDSONG'S CAREER HIGHS

##### MINUTES

Season	30	at Old Dominion, 12/8/18
Career	30	at Old Dominion, 12/8/18

##### POINTS

Season	18	at Old Dominion, 12/8/18
Career	18	at Old Dominion, 12/8/18

##### REBOUNDS

Season	5	(3x) last time vs. CofC, 1/13/19
Career	5	(3x) last time vs. CofC, 1/13/19

##### FIELD GOALS

Season	6	(3x) last time at NU, 1/6/19
Career	6	(3x) last time at NU, 1/6/19

##### 3-POINT FIELD GOALS

Season	4	vs. GW, 12/28/18
Career	4	vs. GW, 12/28/18

##### FREE THROWS

Season	4	(2x) last vs. UNCW, 1/11/19
Career	4	(2x) last vs. UNCW, 1/11/19

##### ASSISTS

Season	4	(2x) last time at UNCW, 2/10/19
Career	4	(2x) last time at UNCW, 2/10/19

##### STEALS

Season	3	vs. GW, 12/28/18
Career	3	vs. GW, 12/28/18

##### BLOCKS

Season	2	vs. UNCW, 1/11/19
Career	2	vs. UNCW, 1/11/19

##### MISCELLANEOUS

Career in Double Figures	12
2018-19 in Double Figures	12

#### >> 2018-19 GAME-BY-GAME

Opp	Date	GS	Min	FG-A	3FG-A	FT-A	Reb.	A	TO	BLK	STL	Pts
VCU	11/6	*	12	0-4	0-2	0-0	0	0	4	0	0	0
HOW	11/12	*	16	5-10	1-4	1-2	2	1	1	1	1	12
at Loy	11/17	*	14	3-3	3-3	0-2	0	0	2	0	0	9
at DC	11/24	*	20	4-10	2-6	0-0	0	2	1	0	1	10
ECU	11/27		19	3-9	1-3	3-3	1	1	3	1	1	10
at Hart	11/30		19	2-5	2-5	2-5	1	1	2	0	0	8
at Fair	12/2		25	3-8	3-5	2-2	0	0	1	0	0	11
UOFR	12/5		18	5-7	3-5	0-0	2	2	1	0	1	13
at ODU	12/8		30	6-18	2-8	4-4	2	4	3	0	1	18
at NSU	12/21		28	5-11	3-7	1-1	5	1	4	0	1	14
GW	12/28		23	6-10	4-6	0-0	2	2	1	0	3	16
at Hof	1/4		23	2-7	2-4	0-0	1	0	22	0	0	9
at NU	1/6		29	6-15	2-7	2-4	5	2	1	0	1	16
UNCW	1/11		21	0-10	0-5	4-4	2	1	0	2	1	4
COFC	1/13		23	3-11	2-5	0-0	4	0	2	0	0	8
ELON	1/20		17	5-11	3-6	0-0	3	2	3	1	0	13
at JMU	1/25		14	5-9	2-5	0-0	0	0	1	0	0	12
at Tow	1/27		3	0-1	0-1	0-0	0	0	1	0	0	0
DEL	2/1		23	5-11	0-4	2-2	1	1	1	0	1	12
DREXEL	2/3		27	5-8	3-6	2-2	3	0	1	1	1	15
at CofC	2/8		24	3-9	2-4	0-0	3	0	1	0	0	8
at UNCW	2/10		29	0-10	0-4	0-0	4	4	2	0	0	0

#### >> BIRDSONG'S CAREER STATISTICS

Season	GP	GS	Min/Avg	FG-FGA	Pct	3pt-Att	Pct	FT-FTA	Pct	Off	Def	Reb	Avg	PF	FO	A	TO	Blk	S	TP	Avg
2016-17	8	0	39/4.9	4-13	.308	2-8	.250	1-1	1.000	0	2	2	0.3	2	0	2	1	0	1	11	1.4
2017-18																					
2018-19	22	4	460/20.9	76-198	.384	40-106	.377	26-35	.743	13	29	42	1.9	40	1	24	38	6	14	218	9.9
<b>CAREER</b>	<b>30</b>	<b>4</b>	<b>499/16.6</b>	<b>80-211</b>	<b>.379</b>	<b>42-114</b>	<b>.368</b>	<b>27-36</b>	<b>.750</b>	<b>13</b>	<b>31</b>	<b>44</b>	<b>1.5</b>	<b>42</b>	<b>1</b>	<b>26</b>	<b>39</b>	<b>6</b>	<b>15</b>	<b>229</b>	<b>7.6</b>

#### >> 2018-19 GAME-BY-GAME

Opp	Date	GS	Min	FG-A	3FG-A	FT-A	Reb.	A	TO	BLK	STL	Pts
VCU	11/6		16	1-5	1-4	1-2	4	1	0	1	0	4
HOW	11/12		13	5-9	4-7	0-2	2	0	0	2	0	14
at Loy	11/17		18	2-2	1-1	0-0	5	3	1	0	2	5
at DC	11/24		16	3-5	3-4	0-0	3	0	0	0	0	9
ECU	11/27		15	2-6	2-4	0-0	4	2	0	0	0	6
at Hart	11/30		22	0-6	0-4	2-2	1	0	1	1	1	2
at Fair	12/2		11	0-3	0-2	2-2	4	0	1	0	0	2
UOFR	12/5		8	1-2	1-2	0-0	1	0	1	0	0	3
at ODU	12/8		21	1-5	0-3	0-0	5	1	0	1	1	2
at NSU	12/21		21	3-7	1-5	0-2	1	2	0	0	0	7
GW	12/28		14	1-5	1-4	0-0	2	0	0	2	0	3
at Hof	1/4		13	0-0	0-0	0-0	1	1	0	0	0	0
at NU	1/6		18	1-5	0-4	1-1	1	1	2	0	0	3
UNCW	1/11	*	12	0-4	0-4	0-0	0	0	0	0	0	0
COFC	1/13	*	7	0-1	0-0	0-0	0	0	0	1	0	0
ELON	1/20		10	3-6	3-5	0-0	0	0	0	1	0	9
at JMU	1/25		13	0-2	0-2	0-0	3	0	0	0	1	0
at Tow	1/27		22	5-8	3-5	0-0	4	0	1	0	1	13
DEL	2/1		9	1-2	1-2	0-0	2	0	1	1	0	3
DREXEL	2/3		15	1-6	1-6	0-0	3	0	1	2	0	3
at CofC	2/8	*	6	0-0	0-0	0-0	0	0	2	0	0	0
at UNCW	2/10		14	2-5	2-5	0-0	3	0	0	0	0	6



# #15 EMMA KRAUSE

## FRESHMAN - FORWARD

### PLANTATION, FLA. - CARDINAL GIBBONS

#### >> KRAUSE'S CAREER HIGHS

##### MINUTES

Season	22	(2x) last time at TU, 1/27/19
Career	22	(2x) last time at TU, 1/27/19

##### POINTS

Season	14	vs. Howard, 11/12/18
Career	14	vs. Howard, 11/12/18

##### REBOUNDS

Season	5	(2x) last time at ODU, 12/8/18
Career	5	(2x) last time at ODU, 12/8/18

##### FIELD GOALS

Season	5	(2x) last time at TU, 1/27/19
Career	5	(2x) last time at TU, 1/27/19

##### 3-POINT FIELD GOALS

Season	4	vs. Howard, 11/12/18
Career	4	vs. Howard, 11/12/18

##### FREE THROWS

Season	2	at Fairfield, 12/2/18
Career	2	at Fairfield, 12/2/18

##### ASSISTS

Season	3	at Loyola, 11/14/18
Career	3	at Loyola, 11/14/18

##### STEALS

Season	2	at Loyola, 11/14/18
Career	2	at Loyola, 11/14/18

##### BLOCKS

Season	2	(3x) last time vs. Drexel, 2/3/19
Career	2	(3x) last time vs. Drexel, 2/3/19

##### MISCELLANEOUS

Career in Double Figures	2
2018-19 in Double Figures	2

#### >> KRAUSE'S CAREER STATISTICS

Season	GP	GS	Min/Avg	FG-FGA	Pct	3pt-Att	Pct	FT-FTA	Pct	Off	Def	Reb	Avg	PF	FO	A	TO	Blk	S	TP	Avg
2018-19	22	3	315/14.3	32-94	.340	24-73	.329	6-11	.545	11	37	48	3.3	38	1	11	11	12	6	94	4.3
<b>CAREER</b>	<b>22</b>	<b>3</b>	<b>315/14.3</b>	<b>32-94</b>	<b>.340</b>	<b>24-73</b>	<b>.329</b>	<b>6-11</b>	<b>.545</b>	<b>11</b>	<b>37</b>	<b>48</b>	<b>3.3</b>	<b>38</b>	<b>1</b>	<b>11</b>	<b>11</b>	<b>12</b>	<b>6</b>	<b>94</b>	<b>4.3</b>





# #20 CHANDLER SMITH

SENIOR - CENTER

PORT TOBACCO, MD. - ST. MARY'S RYKEN

## >> SMITH'S CAREER HIGHS

### MINUTES

Season	20	at UNCW, 2/10/19
Career	20	at UNCW, 2/10/19

### POINTS

Season	2	at UNCW, 2/10/19
Career	4	(4x) last time at SFU 12/2/17

### REBOUNDS

Season	6	at UNCW, 2/10/19
Career	6	at UNCW, 2/10/19

### FIELD GOALS

Season	1	at UNCW, 2/10/19
Career	2	(3x) last time at SFU 12/2/17

### 3-POINT FIELD GOALS

Season	-	
Career	-	

### FREE THROWS

Season	1	vs. Howard, 11/12/18
Career	4	vs. Hofstra, 2/7/17

### ASSISTS

Season	1	vs. Richmond, 12/5/18
Career	1	(3x) last time vs. UofR, 12/5/18

### STEALS

Season	-	
Career	2	(2x) last time vs. Mount St. Mary's, 12/18/16

### BLOCKS

Season	1	(3x) last time at JMU 1/25/19
Career	3	vs. Mount St. Mary's, 12/18/16

### MISCELLANEOUS

Career in Double Figures	0
2017-18 in Double Figures	0

## >> SMITH'S CAREER STATISTICS

Season	GP	GS	Min/Avg	FG-FGA	Pct	3pt-Att	Pct	FT-FTA	Pct	Off	Def	Reb	Avg	PF	FO	A	TO	Blk	S	TP	Avg
2015-16	19	0	97/5.1	3-12	.250	0-0	.000	0-6	.000	2	10	12	0.6	13	0	0	5	4	3	6	0.3
2016-17	13	0	77/5.9	6-21	.286	0-0	.000	7-8	.875	2	22	24	1.8	16	1	1	7	11	3	19	1.5
2017-18	21	0	86/4.1	5-17	.294	0-0	.000	0-0	.000	4	8	12	0.6	15	0	3	8	9	1	10	0.5
2018-19	11	1	55/5.0	1-3	.333	0-0	.000	1-4	.250	3	12	15	1.4	7	0	1	6	4	0	3	0.3
<b>CAREER</b>	<b>64</b>	<b>1</b>	<b>315/4.9</b>	<b>15-53</b>	<b>.283</b>	<b>0-0</b>	<b>.000</b>	<b>8-18</b>	<b>.444</b>	<b>11</b>	<b>52</b>	<b>63</b>	<b>1.0</b>	<b>51</b>	<b>1</b>	<b>5</b>	<b>26</b>	<b>28</b>	<b>7</b>	<b>38</b>	<b>0.6</b>

## >> 2018-19 GAME-BY-GAME

Opp	Date	GS	Min	FG-A	3FG-A	FT-A	Reb.	A	TO	BLK	STL	PTS
VCU	11/6	8	0-0	0-0	0-0	2	0	0	0	0	0	0
HOW	11/12	4	0-0	0-0	1-2	2	0	1	1	0	1	0
at Loy	11/17	4	0-1	0-0	0-0	0	0	0	1	0	0	0
at DC	11/24		DNP - COACH'S DECISION									
ECU	11/27	8	0-0	0-0	0-0	3	0	2	0	0	0	0
at Hart	11/30		DNP - COACH'S DECISION									
at Fair	12/2		DNP - COACH'S DECISION									
UOFR	12/5	5	0-0	0-0	0-0	1	1	0	0	0	0	0
at ODU	12/8		DNP - COACH'S DECISION									
at NSU	12/21	2	0-0	0-0	0-0	0	0	0	0	0	0	0
GW	12/28	1	0-0	0-0	0-0	0	0	1	0	0	0	0
at Hof	1/4		DNP - COACH'S DECISION									
at NU	1/6		DNP - COACH'S DECISION									
UNCW	1/11		DNP - COACH'S DECISION									
COFC	1/13		DNP - COACH'S DECISION									
ELON	1/20		DNP - COACH'S DECISION									
at JMU	1/25	2	0-0	0-0	0-0	0	0	0	1	0	0	0
at Tow	1/27	1	0-0	0-0	0-0	0	0	1	0	0	0	0
DEL	2/1		DNP - COACH'S DECISION									
DREXEL	2/3		DNP - COACH'S DECISION									
at CofC	2/8	1	0-0	0-0	0-0	1	0	1	0	0	0	0
at UNCW	2/10*	20	1-2	0-0	0-2	6	0	0	0	0	2	0



# #21 BAILEY EICHNER

SOPHOMORE - GUARD/FORWARD

CUDAHY, WISC. - CUDAHY

## >> EICHNER'S CAREER HIGHS

### MINUTES

Season	13	vs. GW, 12/28/18
Career	13	vs. GW, 12/28/18

### POINTS

Season	2	at Old Dominion, 12/8/18
Career	4	vs. James Madison, 2/2/18

### REBOUNDS

Season	6	at Old Dominion, 12/8/18
Career	6	at Old Dominion, 12/8/18

### FIELD GOALS

Season	1	at Old Dominion, 12/8/18
Career	1	(3x) last time at ODU, 12/8/18

### 3-POINT FIELD GOALS

Season	-	
Career	-	

### FREE THROWS

Season	1	vs. VCU, 11/6/18
Career	2	vs. James Madison, 2/2/18

### ASSISTS

Season	1	(2x) last time at Hofstra, 1/4/19
Career	2	at Hofstra, 1/19/18

### STEALS

Season	2	at Old Dominion, 12/8/18
Career	2	at Old Dominion, 12/8/18

### BLOCKS

Season	1	vs. GW, 12/28/18
Career	1	(2x) last time vs. GW, 12/28/18

### MISCELLANEOUS

Career in Double Figures	0
2017-18 in Double Figures	0

## >> 2018-19 GAME-BY-GAME

Opp	Date	GS	Min	FG-A	3FG-A	FT-A	Reb.	A	TO	BLK	STL	PTS
VCU	11/6	11	0-2	0-1	1-2	1	0	1	0	0	1	0
HOW	11/12	1	0-0	0-0	0-0	0	0	1	0	0	0	0
at Loy	11/17	1	0-0	0-0	0-0	0	0	0	0	0	0	0
at DC	11/24		DNP - COACH'S DECISION									
ECU	11/26		DNP - COACH'S DECISION									
at Hart	11/30		DNP - COACH'S DECISION									
at Fair	12/2		DNP - COACH'S DECISION									
UOFR	12/5		DNP - COACH'S DECISION									
at ODU	12/8	11	1-2	0-0	0-0	6	0	0	0	0	2	0
at NSU	12/21	7	0-2	0-1	0-0	2	0	0	0	1	0	0
GW	12/28	13	0-1	0-1	0-0	2	1	0	1	0	0	0
at Hof	1/4	8	0-0	0-0	0-0	1	1	0	0	0	0	0
at NU	1/6	6	0-1	0-0	0-0	1	0	0	0	0	0	0
UNCW	1/11	3	0-0	0-0	0-0	0	0	0	0	0	0	0
COFC	1/13		DNP - COACH'S DECISION									
ELON	1/20	1	0-0	0-0	0-0	0	0	1	0	0	0	0
at JMU	1/25	9	0-1	0-0	0-0	2	0	0	0	0	0	0
at Tow	1/27	2	0-0	0-0	0-0	0	0	0	1	0	0	0
DEL	2/1		DNP - COACH'S DECISION									
DREXEL	2/3		DNP - COACH'S DECISION									
at CofC	2/8		DNP - INJURY									
at UNCW	2/10		DNP - INJURY									

## >> EICHNER'S CAREER STATISTICS

Season	GP	GS	Min/Avg	FG-FGA	Pct	3pt-Att	Pct	FT-FTA	Pct	Off	Def	Reb	Avg	PF	FO	A	TO	Blk	S	TP	Avg
2017-18	16	0	46/2.9	2-6	.333	0-2	.000	4-8	.500	6	9	15	0.9	14	0	2	7	2	1	8	0.5
2018-19	12	0	72/6.0	1-9	.111	0-3	.000	1-2	.500	4	11	15	1.3	8	0	2	4	1	3	3	0.3
<b>CAREER</b>	<b>28</b>	<b>0</b>	<b>118/4.2</b>	<b>3-15</b>	<b>.200</b>	<b>0-5</b>	<b>.000</b>	<b>5-10</b>	<b>.500</b>	<b>10</b>	<b>20</b>	<b>30</b>	<b>1.1</b>	<b>22</b>	<b>0</b>	<b>4</b>	<b>11</b>	<b>3</b>	<b>4</b>	<b>11</b>	<b>0.4</b>



# #25 GABBY ROGERS

## SOPHOMORE - CENTER

### DALLAS, TEXAS - BISHOP LYNCH

#### >> ROGERS' CAREER HIGHS

##### MINUTES

Season	31	at Charleston, 2/8/19
Career	31	at Charleston, 2/8/19

##### POINTS

Season	14	at Charleston, 2/8/19
Career	14	at Charleston, 2/8/19

##### REBOUNDS

Season	12	at Charleston, 2/8/19
Career	12	at Charleston, 2/8/19

##### FIELD GOALS

Season	4	(4x) last time at CofC, 2/8/19
Career	4	(5x) last time at CofC, 2/8/19

##### 3-POINT FIELD GOALS

Season	-	
Career	-	

##### FREE THROWS

Season	6	at Charleston, 2/8/19
Career	6	at Charleston, 2/8/19

##### ASSISTS

Season	1	(5x) last time vs. CofC, 1/13/19
Career	1	(12x) last time vs. CofC, 1/13/19

##### STEALS

Season	3	(2x) last time at Hofstra, 1/4/19
Career	3	(3x) last time at Hofstra, 1/4/19

##### BLOCKS

Season	2	vs. Elon, 1/20/19
Career	2	(3x) last time vs. Elon, 1/20/19

##### MISCELLANEOUS

Career in Double Figures	2
2018-19 in Double Figures	2

#### >> 2018-19 GAME-BY-GAME

Opp	Date	GS	Min	FG-A	3FG-A	FT-A	Reb.	A	TO	BLK	STL	Pts
VCU	11/6	*	18	1-2	0-0	2-2	1	0	2	0	0	4
HOW	11/12	*	19	1-2	0-0	0-0	3	0	2	1	0	2
at Loy	11/17	*	16	4-6	0-0	0-0	2	1	0	0	0	8
at DC	11/24	*	27	4-8	0-1	2-2	2	0	1	0	1	10
ECU	11/27	*	15	0-1	0-0	0-0	2	0	3	0	1	0
at Hart	11/30	*	18	1-2	0-0	0-0	1	0	0	1	3	2
at Fair	12/2	*	30	4-7	0-0	0-0	5	1	0	0	1	8
UOFR	12/5	*	29	2-7	0-0	1-2	5	0	1	0	0	5
at ODU	12/8	*	11	3-5	0-0	0-0	2	0	0	0	0	6
at NSU	12/21	*	10	1-3	0-0	0-0	3	0	0	0	0	2
GW	12/28	*	12	1-2	0-0	0-0	3	0	0	0	1	2
at Hof	1/4	*	21	2-3	0-0	0-0	2	1	0	0	3	4
at NU	1/6	*	17	0-2	0-0	2-2	1	1	1	0	0	2
UNCW	1/11	*	11	0-1	0-0	0-0	3	0	2	1	1	0
COFC	1/13	*	21	1-5	0-0	1-2	5	1	1	1	2	3
ELON	1/20	*	23	2-3	0-0	0-0	4	0	1	0	2	5
at JMU	1/25	*	15	1-1	0-0	0-0	1	0	1	0	0	2
at Tow	1/27	*	15	2-5	0-0	0-0	2	0	2	0	0	4
DEL	2/1	*	12	1-5	0-0	0-0	2	0	0	0	1	2
DREXEL	2/3	*	6	0-1	0-0	0-0	0	0	1	0	0	0
at CofC	2/8	*	31	4-9	0-0	6-6	12	0	0	1	0	14
at UNCW	2/10	*										

DNP - SUSPENSION

#### >> ROGERS' CAREER STATISTICS

Season	GP	GS	Min/Avg	FG-FGA	Pct	3pt-Att	Pct	FT-FTA	Pct	Off	Def	Reb	Avg	PF	FO	A	TO	Blk	S	TP	Avg
2017-18	29	0	263/9.1	24-47	.511	0-0	.000	9-13	.692	12	40	52	1.8	55	1	7	15	6	10	57	2.0
2018-19	21	18	381/18.1	35-80	.438	0-1	.000	15-17	.882	21	40	61	2.9	66	0	5	18	7	14	85	4.0
CAREER	50	18	644/12.9	59-127	.465	0-1	.000	24-30	.800	33	80	113	2.3	121	1	12	33	13	24	142	2.8



# #30 VICTORIA REYNOLDS

## JUNIOR - FORWARD

### FAIRFAX, VA./ARCHBISHOP SPALDING

#### >> REYNOLDS' CAREER HIGHS

##### MINUTES

Season	48	at Charleston, 2/8/19
Career	48	at Charleston, 2/8/19

##### POINTS

Season	17	(2x) last time at CofC, 2/8/19
Career	22	at St. Francis (Pa.), 12/2/17

##### REBOUNDS

Season	15	vs. East Carolina, 11/27/18
Career	18	vs. Charleston, 1/26/18

##### FIELD GOALS

Season	6	(4x) last time at UD, 2/1/19
Career	9	vs. Northeastern, 2/11/18

##### 3-POINT FIELD GOALS

Season	2	(4x) last time vs CofC, 1/13/19
Career	2	(6x) last time vs CofC, 1/13/19

##### FREE THROWS

Season	7	at Charleston, 2/8/19
Career	9	vs. Old Dominion, 12/17/17

##### ASSISTS

Season	7	vs. Charleston, 1/13/19
Career	8	at East Carolina, 11/21/17

##### STEALS

Season	4	vs. Charleston, 1/13/19
Career	7	vs. Hofstra, 1/28/18

##### BLOCKS

Season	3	at Norfolk State, 12/21/18
Career	3	(3x) last time vs. NSU, 12/21/18

##### MISCELLANEOUS

Career in Double Figures	33
2018-19 in Double Figures	14

#### >> 2018-19 GAME-BY-GAME

Opp	Date	GS	Min	FG-A	3FG-A	FT-A	Reb.	A	TO	BLK	STL	Pts
VCU	11/6	*	37	4-7	0-0	0-0	4	5	2	0	0	8
HOW	11/12	*	26	3-10	0-2	4-6	5	3	1	0	2	10
at Loy	11/17	*	33	4-10	0-0	2-2	5	2	7	0	0	10
at DC	11/24	*	29	6-8	0-0	1-1	3	2	2	0	1	13
ECU	11/27	*	35	4-6	1-1	6-6	15	4	6	2	1	15
at Hart	11/30	*	29	1-6	0-0	2-2	7	1	5	0	3	4
at Fair	12/2	*	30	4-8	0-0	4-6	4	1	3	0	3	12
UOFR	12/5	*	35	5-8	2-2	2-2	6	0	5	0	1	14
at ODU	12/8	*	37	4-10	1-4	4-4	6	2	5	2	1	13
at NSU	12/21	*	35	2-5	1-2	6-8	9	2	2	3	1	11
GW	12/28	*	15	3-7	2-2	0-0	5	2	0	0	0	8
at Hof	1/4	*	13	0-1	0-0	0-0	1	0	4	0	0	0
at NU	1/6	*	30	4-10	1-3	0-0	3	2	5	0	2	9
UNCW	1/11	*	31	6-9	1-2	4-5	7	0	4	2	1	17
COFC	1/13	*	36	3-8	2-2	0-0	10	7	4	1	4	8
ELON	1/20	*	37	3-6	0-1	5-8	6	3	0	2	1	11
at JMU	1/25	*	34	1-4	1-2	2-2	0	0	2	0	1	5
at Tow	1/27	*	26	6-11	0-1	0-0	3	0	2	0	1	12
DEL	2/1	*	39	6-11	0-2	1-2	6	3	2	2	3	14
DREXEL	2/3	*	39	3-13	0-4	0-0	9	2	4	1	1	6
at CofC	2/8	*	48	5-15	0-2	7-8	5	3	1	1	0	17
at UNCW	2/10	*	40	4-11	0-2	2-2	4	3	6	0	1	10

#### >> REYNOLDS' CAREER STATISTICS

Season	GP	GS	Min/Avg	FG-FGA	Pct	3pt-Att	Pct	FT-FTA	Pct	Off	Def	Reb	Avg	PF	FO	A	TO	Blk	S	TP	Avg
2016-17	28	0	466/16.6	51-104	.490	5-12	.417	36-46	.783	44	45	89	3.2	42	0	21	30	5	33	143	5.1
2017-18	30	30	977/32.6	125-270	.463	8-34	.235	50-68	.735	65	147	212	7.1	77	1	60	69	22	71	308	10.3
2018-19	22	19	712/32.4	81-184	.440	13-35	.371	52-64	.813	19	107	126	5.7	56	3	47	72	15	29	227	10.3
CAREER	80	49	2155/26.8	257-558	.461	26-81	.321	138-178	.775	128	299	427	5.3	175	4	128	171	42	133	678	8.5



# #32 CAROLINE STOVER

FRESHMAN - CENTER

PLYMPTON, MASS. - CARDINAL SPELLMAN

## >> STOVER'S CAREER STATISTICS

<b>MINUTES</b>			<b>FREE THROWS</b>		
Season	1	at Loyola, 11/14/18	Season	-	
Career	1	at Loyola, 11/14/18	Career	-	
<b>POINTS</b>			<b>ASSISTS</b>		
Season	-		Season	-	
Career	-		Career	-	
<b>REBOUNDS</b>			<b>STEALS</b>		
Season	-		Season	-	
Career	-		Career	-	
<b>FIELD GOALS</b>			<b>BLOCKS</b>		
Season	-		Season	-	
Career	-		Career	-	
<b>3-POINT FIELD GOALS</b>			<b>MISCELLANEOUS</b>		
Season	-		Career in Double Figures		0
Career	-		2018-19 in Double Figures		0

## >> 2018-19 GAME-BY-GAME

Opp	Date	GS	Min	FG-A	3FG-A	FT-A	Reb.	A	TO	BLK	STL	PTS
VCU	11/6			DNP	-	COACH'S DECISION						
HOW	11/12			DNP	-	COACH'S DECISION						
at Loy	11/17	1		0-2	0-0	0-0	0	0	0	0	0	0
at DC	11/24			DNP	-	COACH'S DECISION						
ECU	11/27			DNP	-	COACH'S DECISION						
at Hart	11/30			DNP	-	COACH'S DECISION						
at Fair	12/2			DNP	-	COACH'S DECISION						
UOFR	12/5			DNP	-	COACH'S DECISION						
at ODU	12/8			DNP	-	COACH'S DECISION						
at NSU	12/21			DNP	-	COACH'S DECISION						
GW	12/28	1		0-0	0-0	0-0	0	0	0	0	0	0
at Hof	1/4			DNP	-	COACH'S DECISION						
at NU	1/6			DNP	-	COACH'S DECISION						
UNCW1	1/11			DNP	-	COACH'S DECISION						
COFC	1/13			DNP	-	COACH'S DECISION						
ELON	1/20			DNP	-	COACH'S DECISION						
at JMU	1/25			DNP	-	COACH'S DECISION						
at Tow	1/27			DNP	-	COACH'S DECISION						
DEL	2/1			DNP	-	COACH'S DECISION						
DREXEL	2/3			DNP	-	COACH'S DECISION						
at CofC	2/8			DNP	-	COACH'S DECISION						
at UNCW	2/10			DNP	-	COACH'S DECISION						

## >> STOVER'S CAREER STATISTICS

Season	GP	GS	Min/Avg	FG-FGA	Pct	3pt-Att	Pct	FT-FTA	Pct	Off	Def	Reb	Avg	PF	FO	A	TO	Blk	S	TP	Avg
2018-19	2	0	1/0.5	0-2	.000	0-0	.000	0-0	.000	0	0	0	0.0	0	0	0	0	0	0	0	0.0
CAREER	2	0	1/0.5	0-2	.000	0-0	.000	0-0	.000	0	0	0	0.0	0	0	0	0	0	0	0	0.0



2018-19 Tribe Women's Basketball





**W&M Women's Basketball**  
**William & Mary Season Schedule/Results & Leaders (as of Feb 14, 2019)**  
**All games**

<b>RECORD:</b>	<b>OVERALL</b>	<b>HOME</b>	<b>AWAY</b>	<b>NEUTRAL</b>
ALL GAMES	11-11	6-4	5-7	0-0
CONFERENCE	4-7	2-3	2-4	0-0
NON-CONFERENCE	7-4	4-1	3-3	0-0

<b>Date</b>	<b>Opponent</b>	<b>Score</b>	<b>Att. High Points</b>	<b>High Rebounds</b>
11/06/18	VCU	55-72 L	684 (15)Boggs, Bianca	(6)Boggs, Bianca
11/12/18	HOWARD	W 88-75	564 (26)Boggs, Bianca	(9)Boggs, Bianca
11/17/18	at Loyola	W 65-49	352 (14)Boggs, Bianca	(6)Reynolds, Victoria
11/24/18	at Davidson	65-76 L	412 (18)Boggs, Bianca	(10)Boggs, Bianca
11/27/18	EAST CAROLINA	W 63-43	574 (15)Reynolds, Victoria	(15)Reynolds, Victoria
11/30/18	at HARTFORD	45-50 L	649 (14)Hodgson, Eva	(7)Reynolds, Victoria
12/02/18	at Fairfield	W 60-54	627 (22)Boggs, Bianca	(5)Hodgson, Eva
				(5)Rogers, Gabby
				(5)Boggs, Bianca
12/05/18	RICHMOND	W 65-55	634 (15)Hodgson, Eva	(6)Reynolds, Victoria
12/8/18	at Old Dominion	69-83 L	1802 (18)Birdsong, Harper	(6)Reynolds, Victoria
				(6)Eichner, Bailey
12/21/18	at Norfolk State	W 55-44	246 (14)Birdsong, Harper	(9)Reynolds, Victoria
12/29/18	GEORGE WASHINGTON	W 73-59	611 (26)Boggs, Bianca	(10)Boggs, Bianca
1/4/19	*at Hofstra	W 60-55	323 (22)Boggs, Bianca	(10)Boggs, Bianca
01/06/19	*at Northeastern	74-88 L	540 (21)Boggs, Bianca	(6)Boggs, Bianca
01/11/19	*UNCW	W 70-64	657 (25)Boggs, Bianca	(7)Reynolds, Victoria
				(7)Pollard, Nyla
01/13/19	*COL. OF CHARLESTON	54-66 L	582 (18)Boggs, Bianca	(10)Reynolds, Victoria
01/20/19	*ELON	W 65-60	904 (13)Birdsong, Harper	(6)Reynolds, Victoria
				(13)Boggs, Bianca
1/25/19	*at James Madison	48-65 L	2234 (13)Hodgson, Eva	(11)Boggs, Bianca
1/27/19	*at Towson	W 80-69	609 (22)Boggs, Bianca	(8)Jones, Misha
02/01/19	*DELAWARE	59-70 L	634 (14)Reynolds, Victoria	(8)Boggs, Bianca
02/03/19	*DREXEL	58-62 L	962 (17)Boggs, Bianca	(9)Boggs, Bianca
				(9)Reynolds, Victoria
02/08/19	*at Charleston	77-79 Lo2	3031 (23)Boggs, Bianca	(12)Rogers, Gabby
02/10/19	*at UNCW	58-66 L	945 (24)Hodgson, Eva	(10)Boggs, Bianca

\* - CAA game

<b>Attendance Summary</b>	<b>Games</b>	<b>Attend</b>	<b>Avg/Game</b>
Home	10	6806	681
Away	12	11770	981
Neutral	0	0	0
Total	22	18576	844



**W&M Women's Basketball**  
**William & Mary Combined Team Statistics (as of Feb 14, 2019)**  
**All games**

<b>RECORD:</b>	<b>OVERALL</b>	<b>HOME</b>	<b>AWAY</b>	<b>NEUTRAL</b>
ALL GAMES	11-11	6-4	5-7	0-0
CONFERENCE	4-7	2-3	2-4	0-0
NON-CONFERENCE	7-4	4-1	3-3	0-0

#	Player	gp-gs	min	avg	Total		3-Point		F-Throw		Rebounds				pf	dq	a	to	blk	stl	pts	avg
					fg-fga	fg%	3fg-fga	3fg%	ft-fa	ft%	off	def	tot	avg								
02	Boggs, Bianca	22-22	773	35.1	129-305	.423	30-89	.337	85-121	.702	31	127	158	7.2	52	2	82	93	18	53	373	17.0
30	Reynolds, Victoria	22-19	712	32.4	81-184	.440	13-35	.371	52-64	.813	19	107	126	5.7	56	3	47	72	15	29	227	10.3
12	Birdsong, Harper	22-4	460	20.9	76-198	.384	40-106	.377	26-35	.743	13	29	42	1.9	40	1	24	38	6	14	218	9.9
10	Hodgson, Eva	22-22	695	31.6	69-158	.437	22-55	.400	56-68	.824	21	41	62	2.8	59	1	67	59	11	30	216	9.8
15	Krause, Emma	22-3	315	14.3	32-94	.340	24-73	.329	6-11	.545	11	37	48	2.2	38	1	11	11	12	6	94	4.3
11	Pollard, Nyla	22-18	620	28.2	30-108	.278	10-44	.227	23-34	.676	23	38	61	2.8	48	2	58	40	3	22	93	4.2
25	Rogers, Gabby	21-18	381	18.1	35-80	.438	0-1	.000	15-17	.882	21	40	61	2.9	66	0	5	18	7	14	85	4.0
05	Jones, Misha	22-3	290	13.2	26-61	.426	17-44	.386	14-16	.875	13	31	44	2.0	43	0	26	17	5	3	83	3.8
00	Underwood, Libby	12-0	65	5.4	4-13	.308	0-3	.000	2-4	.500	3	0	3	0.3	1	0	2	6	1	1	10	0.8
20	Smith, Chandler	11-1	55	5.0	1-3	.333	0-0	.000	1-4	.250	3	12	15	1.4	7	0	1	6	4	0	3	0.3
03	Taylor, Ashley	4-0	11	2.8	0-5	.000	0-4	.000	1-2	.500	0	0	0	0.0	0	0	0	0	0	0	1	0.3
21	Eichner, Bailey	12-0	72	6.0	1-9	.111	0-3	.000	1-2	.500	4	11	15	1.3	8	0	2	4	1	3	3	0.3
32	Stover, Caroline	2-0	1	0.5	0-2	.000	0-0	.000	0-0	.000	0	0	0	0.0	0	0	0	0	0	0	0	0.0
Team											45	54	99				10					
Total.....		0	4450		484-1220	.397	156-457	.341	282-378	.746	207	527	734	0.0	418	10	325	374	83	175	1406	0.0
Opponents.....		0	4449		494-1237	.399	102-367	.278	314-451	.696	268	564	832	0.0	417	9	261	398	77	199	1404	0.0

TEAM STATISTICS			WM	OPP	Date	Opponent	Score	Att.
SCORING			1406	1404	11/06/18	VCU	L 55-72	684
Points per game			63.9	63.8	11/12/18	HOWARD	W 88-75	564
Scoring margin			+0.1	-	11/17/18	at Loyola	W 65-49	352
FIELD GOALS-ATT			484-1220	494-1237	11/24/18	at Davidson	L 65-76	412
Field goal pct			.397	.399	11/27/18	EAST CAROLINA	W 63-43	574
3 POINT FG-ATT			156-457	102-367	11/30/18	at HARTFORD	L 45-50	649
3-point FG pct			.341	.278	12/02/18	at Fairfield	W 60-54	627
3-pt FG made per game			7.1	4.6	12/05/18	RICHMOND	W 65-55	634
FREE THROWS-ATT			282-378	314-451	12/8/18	at Old Dominion	L 69-83	1802
Free throw pct			.746	.696	12/21/18	at Norfolk State	W 55-44	246
F-Throws made per game			12.8	14.3	12/29/18	GEORGE WASHINGTON	W 73-59	611
REBOUNDS			734	832	* 1/4/19	at Hofstra	W 60-55	323
Rebounds per game			33.4	37.8	* 01/06/19	at Northeastern	L 74-88	540
Rebounding margin			-4.5	-	* 01/11/19	UNCW	W 70-64	657
ASSISTS			325	261	* 01/13/19	COL. OF CHARLESTON	L 54-66	582
Assists per game			14.8	11.9	* 01/20/19	ELON	W 65-60	904
TURNOVERS			374	398	* 1/25/19	at James Madison	L 48-65	2234
Turnovers per game			17.0	18.1	* 1/27/19	at Towson	W 80-69	609
Turnover margin			+1.1	-	* 02/01/19	DELAWARE	L 59-70	634
Assist/turnover ratio			0.9	0.7	* 02/03/19	DREXEL	L 58-62	962
STEALS			175	199	* 02/08/19	at Charleston	Lo2 77-79	3031
Steals per game			8.0	9.0	* 02/10/19	at UNCW	L 58-66	945
BLOCKS			83	77				
Blocks per game			3.8	3.5				
ATTENDANCE			6806	11770				
Home games-Avg/Game			10-681	12-981				
Neutral site-Avg/Game			-	0-0				

\* - CAA game

Score by Periods	1st	2nd	3rd	4th	OT	OT2	Totals
William & Mary	340	347	387	318	9	5	1406
Opponents	339	331	375	343	9	7	1404



**W&M Women's Basketball**  
**William & Mary Combined Team Statistics (as of Feb 14, 2019)**  
**CAA games only**

RECORD:	OVERALL	HOME	AWAY	NEUTRAL
ALLGAMES	4-7	2-3	2-4	0-0
CONFERENCE	4-7	2-3	2-4	0-0
NON-CONFERENCE	0-0	0-0	0-0	0-0

#	Player	gp-gs	min	avg	Total		3-Point		F-Throw		Rebounds				pf	dq	a	to	blk	stl	pts	avg
					fg-fga	fg%	3fg-fga	3fg%	ft-fga	ft%	off	def	tot	avg								
02	Boggs, Bianca	11-11	395	35.9	64-157	.408	18-47	.383	50-75	.667	19	65	84	7.6	30	2	37	45	8	23	196	17.8
10	Hodgson, Eva	11-11	381	34.6	40-87	.460	14-29	.483	38-42	.905	15	19	34	3.1	28	1	30	30	9	14	132	12.0
30	Reynolds, Victoria	11-9	372	33.8	41-99	.414	6-21	.286	21-27	.778	9	44	53	4.8	29	1	23	34	8	16	109	9.9
12	Birdsong, Harper	11-0	235	21.4	34-103	.330	16-52	.308	13-16	.813	8	19	27	2.5	17	0	10	15	4	4	97	8.8
05	Jones, Misha	11-2	178	16.2	15-35	.429	12-28	.429	9-10	.900	4	21	25	2.3	26	0	15	10	3	2	51	4.6
11	Pollard, Nyla	11-11	306	27.8	13-49	.265	5-21	.238	11-16	.688	15	16	31	2.8	21	1	30	19	2	9	42	3.8
25	Rogers, Gabby	10-7	174	17.4	13-35	.371	0-0	.000	10-11	.909	11	21	32	3.2	31	0	3	9	5	7	36	3.6
15	Krause, Emma	11-3	141	12.8	13-39	.333	10-33	.303	1-1	1.000	2	14	16	1.5	20	1	2	7	5	2	37	3.4
20	Smith, Chandler	4-1	23	5.8	1-2	.500	0-0	.000	0-2	.000	2	5	7	1.8	3	0	0	2	2	0	2	0.5
00	Underwood, Libby	3-0	13	4.3	0-4	.000	0-1	.000	1-2	.500	2	0	2	0.7	0	0	1	1	0	0	1	0.3
03	Taylor, Ashley	1-0	3	3.0	0-1	.000	0-1	.000	0-0	.000	0	0	0	0.0	0	0	0	0	0	0	0	0.0
21	Eichner, Bailey	6-0	29	4.8	0-2	.000	0-0	.000	0-0	.000	0	4	4	0.7	4	0	1	2	0	0	0	0.0
Team											24	22	46				5					
Total.....		11	2250		234-613	.382	81-233	.348	154-202	.762	111	250	361	32.8	209	6	152	179	46	77	703	63.9
Opponents.....		11	2250		264-644	.410	51-182	.280	165-235	.702	154	291	445	40.5	210	6	132	183	40	96	744	67.6

TEAM STATISTICS	WM	OPP	Date	Opponent	Score	Att.
SCORING	703	744	* 1/4/19	at Hofstra	W 60-55	323
Points per game	63.9	67.6	* 01/06/19	at Northeastern	L 74-88	540
Scoring margin	-3.7	-	* 01/11/19	UNCW	W 70-64	657
FIELD GOALS-ATT	234-613	264-644	* 01/13/19	COL. OF CHARLESTON	L 54-66	582
Field goal pct	.382	.410	* 01/20/19	ELON	W 65-60	904
3 POINT FG-ATT	81-233	51-182	* 1/25/19	at James Madison	L 48-65	2234
3-point FG pct	.348	.280	* 1/27/19	at Towson	W 80-69	609
3-pt FG made per game	7.4	4.6	* 02/01/19	DELAWARE	L 59-70	634
FREE THROWS-ATT	154-202	165-235	* 02/03/19	DREXEL	L 58-62	962
Free throw pct	.762	.702	* 02/08/19	at Charleston	Lo2 77-79	3031
F-Throws made per game	14.0	15.0	* 02/10/19	at UNCW	L 58-66	945
REBOUNDS	361	445	*- CAA game			
Rebounds per game	32.8	40.5				
Rebounding margin	-7.6	-				
ASSISTS	152	132				
Assists per game	13.8	12.0				
TURNOVERS	179	183				
Turnovers per game	16.3	16.6				
Turnover margin	+0.4	-				
Assist/turnover ratio	0.8	0.7				
STEALS	77	96				
Steals per game	7.0	8.7				
BLOCKS	46	40				
Blocks per game	4.2	3.6				
ATTENDANCE	3739	7682				
Home games-Avg/Game	5-748	6-1280				
Neutral site-Avg/Game	-	0-0				















Score by Periods	1st	2nd	3rd	4th	OT	OT2	Totals
William & Mary	165	168	195	161	9	5	703
Opponents	182	171	200	175	9	7	744



# WILLIAM & MARY RADIO AND TV CHART

**NOTES:** W&M looks to bounce back as it concludes a season-long three-game road trip at Elon ... Senior Bianca Boggs leads the Tribe averaging 17.0 ppg and 7.2 rpg. Junior Victoria Reynolds is second on the team averaging 10.3 points per game, while redshirt sophomore Harper Birdsong (9.9 ppg.) and freshman Eva Hodgson (9.8 ppg.) are just outside of double-figures this season.

RECORD	2018-19	LAST YR	STATS	W&M	OPP	ELON	OPP	W&M'S LAST THREE GAMES		
<b>OVERALL</b>	11-11	16-14	<b>FG%</b>	.397	.399	.398	.429	<b>Feb. 3</b>	<b>DREXEL*</b>	<b>L, 58-62</b>
<b>CAA</b>	4-7	7-11	<b>FT%</b>	.746	.696	.703	.676	Boggs 17 pts, 9 reb, Birdsong 15 pts, Hodgson 12 pts		
<b>HOME</b>	6-4	9-6	<b>3PT%</b>	.397	.278	.310	.352	<b>Feb. 8</b>	<b>at Charleston*</b>	<b>L, 77-79 (2ot)</b>
<b>AWAY/NEUTRAL</b>	5-7/0-0	7-7/0-1	<b>POINTS</b>	63.9	63.8	64.5	70.0	Boggs 23 pts, Reynolds 17 pts, Rogers 14 pts, 12 reb		
			<b>REBOUNDS</b>	33.4	37.8	36.5	37.7	<b>Feb. 10</b>	<b>at UNCW*</b>	<b>L, 58-66</b>
			<b>TURNOVERS</b>	17.0	18.1	18.4	16.9	Hodgson 24 pts, Boggs 16 pts, 10 reb, Reynolds 10 pts		

	<b>0 LIBBY UNDERWOOD, G</b> SO./5-9/RYE, N.H./PORTSMOUTH	<table><tr><td>PPG</td><td>0.8</td><td>FG%</td><td>.308</td></tr><tr><td>RPG</td><td>0.3</td><td>FT%</td><td>.500 (2-4)</td></tr><tr><td>APG</td><td>0.2</td><td>3PT%</td><td>.000</td></tr></table>	PPG	0.8	FG%	.308	RPG	0.3	FT%	.500 (2-4)	APG	0.2	3PT%	.000	<ul style="list-style-type: none"><li>Looking to expand her role during her second season with the Green and Gold.</li><li>Had six points and added a block and assist against VCU (11/6).</li><li>Scored a career-high 8 points and added out 3 assists against USC Upstate (12/5/17).</li><li>Added four points in a rebound against Drexel (1/9/18).</li><li>Grabbed a rebound in the CAA Quarterfinal against Elon (3/8/18).</li></ul>	<b>POINTS</b> 8 vs. USC Upstate (12/5/17) <b>REBOUNDS</b> 3 vs. Northeastern (1/21/18) <b>ASSISTS</b> 3 vs. USC Upstate (12/5/17) <b>LAST GAME: DNP - COACH'S DECISION</b>
PPG	0.8	FG%	.308													
RPG	0.3	FT%	.500 (2-4)													
APG	0.2	3PT%	.000													
	<b>1 SYDNEY WAGNER, G</b> SO./5-6/PHOENIXVILLE, PA./SPRING FORD SENIOR HIGH (STETSON)	<table><tr><td>PPG</td><td>-</td><td>FG%</td><td>-</td></tr><tr><td>RPG</td><td>-</td><td>FT%</td><td>-</td></tr><tr><td>SPG</td><td>-</td><td>3PT%</td><td>-</td></tr></table>	PPG	-	FG%	-	RPG	-	FT%	-	SPG	-	3PT%	-	<ul style="list-style-type: none"><li>Transfer from Stetson that has to sit out the 18-19 season due to NCAA Transfer rule.</li><li>Appeared in 32 games with nine starters for the Hatters last season.</li><li>Scored a career-high 20 points against Florida.</li><li>Dropped 18 points against on 5-of-8 from 3-point range against Webber International.</li><li>Averaged 6.0 ppg and knocked down 42 triples during her freshman season at Stetson.</li></ul>	<b>POINTS</b> 20 vs. Florida (11/22/17) <b>REBOUNDS</b> 5 vs. Lipscomb (2/19/18) <b>ASSISTS</b> 3 vs. Lipscomb (2/19/18) <b>LAST GAME: DNP - TRANSFER RULE</b>
PPG	-	FG%	-													
RPG	-	FT%	-													
SPG	-	3PT%	-													
	<b>2 BIANCA BOGGS, G</b> SR./5-6/WALDORF, MD./ST. MARY'S RYKEN	<table><tr><td>PPG</td><td>17.0</td><td>FG%</td><td>.423</td></tr><tr><td>RPG</td><td>7.2</td><td>FT%</td><td>.702 (85-121)</td></tr><tr><td>APG</td><td>3.7</td><td>3PT%</td><td>.337</td></tr></table>	PPG	17.0	FG%	.423	RPG	7.2	FT%	.702 (85-121)	APG	3.7	3PT%	.337	<ul style="list-style-type: none"><li>Named team captain for the 2018-19 season.</li><li>Tabbed CAA Player of the Week for the week of Dec. 31.</li><li>Has 15 20-point games, including eight 20-point games this season.</li><li>Scored a career-high 33 points in a win at St. Francis (12/2/17).</li><li>Ranks 12 in school history with 1,298 career points.</li></ul>	<b>POINTS</b> 33 vs. St. Francis (Pa.) (12/2/17) <b>REBOUNDS</b> 11 (2x) last time vs. ECU (11/27/18) <b>ASSISTS</b> 8 at Delaware (2/9/18) <b>LAST GAME: DNP - COACH'S DECISION</b>
PPG	17.0	FG%	.423													
RPG	7.2	FT%	.702 (85-121)													
APG	3.7	3PT%	.337													
	<b>3 ASHLEY TAYLOR, G</b> JR./6-0/CHARLOTTESVILLE, VA./ST. ANNE'S BELLEFIELD	<table><tr><td>PPG</td><td>0.3</td><td>FG%</td><td>.000</td></tr><tr><td>RPG</td><td>0.0</td><td>FT%</td><td>.500 (1-2)</td></tr><tr><td>APG</td><td>0.0</td><td>3PT%</td><td>.000</td></tr></table>	PPG	0.3	FG%	.000	RPG	0.0	FT%	.500 (1-2)	APG	0.0	3PT%	.000	<ul style="list-style-type: none"><li>Has seen action in 21 games during her career with the Tribe.</li><li>Made her first career basket, a 3-pointer, in the win against USC Upstate (12/5/17).</li><li>Grabbed a pair of rebounds and added an assist against Loyola (11/25/17).</li><li>Hit a basket and grabbed a board at Elon (3/1/18)</li></ul>	<b>POINTS</b> 3 vs. USC Upstate (12/5/17) <b>REBOUNDS</b> 2 vs. Loyola (11/25/17) <b>ASSISTS</b> 1 (4x) last time at Charleston (12/29/17) <b>LAST GAME: DNP - COACH'S DECISION</b>
PPG	0.3	FG%	.000													
RPG	0.0	FT%	.500 (1-2)													
APG	0.0	3PT%	.000													
	<b>5 MISHA JONES, G/F</b> SR./5-9/MANASSAS PARK, VA./BATTLEFIELD	<table><tr><td>PPG</td><td>3.8</td><td>FG%</td><td>.426</td></tr><tr><td>RPG</td><td>2.0</td><td>FT%</td><td>.875 (14-16)</td></tr><tr><td>APG</td><td>1.2</td><td>3PT%</td><td>.386</td></tr></table>	PPG	3.8	FG%	.426	RPG	2.0	FT%	.875 (14-16)	APG	1.2	3PT%	.386	<ul style="list-style-type: none"><li>Named a team captain for the second straight season this year.</li><li>Matched a career-high with nine points on three, 3-pointers vs. UNCW (1/11).</li><li>Grabbed a career-high eight boards with eight points in the win at Towson (1/27).</li><li>Made her first career start against George Washington (12/28) and scored four points.</li><li>Scored a career-high nine points, including seven straight points in the win vs. Howard.</li></ul>	<b>POINTS</b> 9 vs. Howard (11/12/18) <b>REBOUNDS</b> 8 at Towson (1/27/19) <b>ASSISTS</b> 4 (3x) at Old Dominion (12/8/18) <b>LAST GAME: PLAYED 5 MINUTES</b>
PPG	3.8	FG%	.426													
RPG	2.0	FT%	.875 (14-16)													
APG	1.2	3PT%	.386													
	<b>10 EVA HODGSON, G</b> FR./5-9/RINDGE, N.H./NEW HAMPTON SCHOOL	<table><tr><td>PPG</td><td>9.8</td><td>FG%</td><td>.437</td></tr><tr><td>RPG</td><td>2.8</td><td>FT%</td><td>.824 (56-68)</td></tr><tr><td>APG</td><td>3.1</td><td>3PT%</td><td>.400</td></tr></table>	PPG	9.8	FG%	.437	RPG	2.8	FT%	.824 (56-68)	APG	3.1	3PT%	.400	<ul style="list-style-type: none"><li>Named CAA Rookie of the Week for the week of Dec. 3, Jan. 7, and Feb. 11.</li><li>Poured in a career-high 24 points at UNCW (2/10).</li><li>Scored a then-career-high 18 points in the CAA opening win at Hofstra (1/4).</li><li>Netted 13 pts and grabbed a CH six boards with five dimes in the win at Towson (1/20).</li><li>Her parents and two brothers all played Division III basketball.</li></ul>	<b>POINTS</b> 24 at UNCW (2/10/19) <b>REBOUNDS</b> 6 (2x) last time vs. Drexel (2/3/19) <b>ASSISTS</b> 6 (3x) last time vs. Elon (1/20/19) <b>LAST GAME: 24 PTS, 5 REB, 2 AST</b>
PPG	9.8	FG%	.437													
RPG	2.8	FT%	.824 (56-68)													
APG	3.1	3PT%	.400													
	<b>11 NYLA POLLARD, G</b> SO./5-9/VIRGINIA BEACH, VA./PRINCESS ANNE	<table><tr><td>PPG</td><td>4.0</td><td>FG%</td><td>.278</td></tr><tr><td>RPG</td><td>2.8</td><td>FT%</td><td>.676 (23-34)</td></tr><tr><td>APG</td><td>2.6</td><td>3PT%</td><td>.227</td></tr></table>	PPG	4.0	FG%	.278	RPG	2.8	FT%	.676 (23-34)	APG	2.6	3PT%	.227	<ul style="list-style-type: none"><li>Made her first start of the year &amp; had a double-double (10 pts, 12 reb) vs. ECU (11/27).</li><li>Scored eight points, two rebounds, and four assists in the win at Towson (1/27).</li><li>Had nine points and added two rebounds, four assists, and a steal at Loyola (11/17).</li><li>Chipped in nine points and a career-high six helpers in the win vs. UNCW (1/11).</li><li>Scored a career-high 14 points, four assists, three rebounds against Upstate (12/5/17).</li></ul>	<b>POINTS</b> 14 vs. USC Upstate (12/5/17) <b>REBOUNDS</b> 12 vs. East Carolina (11/27/18) <b>ASSISTS</b> 5 (2x) last time vs. ODU (12/17/17) <b>LAST GAME: 2 REB, 2 AST IN 16 MINS</b>
PPG	4.0	FG%	.278													
RPG	2.8	FT%	.676 (23-34)													
APG	2.6	3PT%	.227													
	<b>12 HARPER BIRDSONG, G</b> R-SO./5-10/SUFFOLK, VA./NANSEMOND SUFFOLK (GW)	<table><tr><td>PPG</td><td>9.9</td><td>FG%</td><td>.384</td></tr><tr><td>RPG</td><td>1.9</td><td>FT%</td><td>.743 (26-35)</td></tr><tr><td>APG</td><td>1.1</td><td>3PT%</td><td>.377</td></tr></table>	PPG	9.9	FG%	.384	RPG	1.9	FT%	.743 (26-35)	APG	1.1	3PT%	.377	<ul style="list-style-type: none"><li>Set a career-high with 18 points and four assists at Old Dominion (12/8).</li><li>Notched 16 points and grabbed five rebounds at Northeastern (1/6).</li><li>Scored 16 points and had three steals against George Washington (12/28).</li><li>Had 15 points, three rebounds, one steal, and one block against Drexel (2/3).</li><li>Appeared in nine games during her freshman season at George Washington.</li></ul>	<b>POINTS</b> 18 vs. Old Dominion (12/8/18) <b>REBOUNDS</b> 5 (2x) last time vs. Charleston (1/13/19) <b>ASSISTS</b> 4 at Old Dominion (12/8/18) <b>LAST GAME: 4 REB, 4 AST IN 29 MINS</b>
PPG	9.9	FG%	.384													
RPG	1.9	FT%	.743 (26-35)													
APG	1.1	3PT%	.377													
	<b>15 EMMA KRAUSE, F</b> FR./6-2/PLANTATION, FLA./CARDINAL GIBBONS	<table><tr><td>PPG</td><td>4.3</td><td>FG%</td><td>.340</td></tr><tr><td>RPG</td><td>2.2</td><td>FT%</td><td>.545 (6-11)</td></tr><tr><td>BPG</td><td>0.6</td><td>3PT%</td><td>.329</td></tr></table>	PPG	4.3	FG%	.340	RPG	2.2	FT%	.545 (6-11)	BPG	0.6	3PT%	.329	<ul style="list-style-type: none"><li>Named CAA Rookie of the Week for the week of Dec. 24.</li><li>Made her first career start and played 12 minutes against UNCW (1/11).</li><li>Scored 13 points and grabbed four rebounds in the win at Towson (1/27).</li><li>Netted a career-high 14 points on four 3-pointers against Howard (11/12).</li><li>Hit three 3-pointers for nine points in the win against Elon (1/20).</li></ul>	<b>POINTS</b> 14 vs. Howard (11/12/18) <b>REBOUNDS</b> 5 vs. Old Dominion (12/8/18) <b>ASSISTS</b> 3 at Loyola (11/17/18) <b>LAST GAME: 6 PTS, 3 REB IN 14 MINS</b>
PPG	4.3	FG%	.340													
RPG	2.2	FT%	.545 (6-11)													
BPG	0.6	3PT%	.329													
	<b>20 CHANDLER SMITH, C</b> SR./6-3/PORT TOBACCO, MD./ST. MARY'S-RYKEN	<table><tr><td>PPG</td><td>0.3</td><td>FG%</td><td>.333</td></tr><tr><td>RPG</td><td>1.4</td><td>FT%</td><td>.250 (1-4)</td></tr><tr><td>BPG</td><td>0.4</td><td>3PT%</td><td>-</td></tr></table>	PPG	0.3	FG%	.333	RPG	1.4	FT%	.250 (1-4)	BPG	0.4	3PT%	-	<ul style="list-style-type: none"><li>Named a team captain for her senior season.</li><li>Key reserve in the post that has appeared in 64 career games.</li><li>Made her first career start at UNCW (2/10) &amp; grabbed a CH six boards in a CH 20 mins.</li><li>Tied a career-high with four points in a win at St. Francis (12/1/17).</li><li>Rejected 28 shots during her career.</li></ul>	<b>POINTS</b> 4 (4x) last time at SFU (12/2/17) <b>REBOUNDS</b> 6 at UNCW (2/10/19) <b>BLOCKS</b> 3 vs. Mount St. Mary's (12/18/16) <b>LAST GAME: 2 PTS, 6 REB, 1 BLK</b>
PPG	0.3	FG%	.333													
RPG	1.4	FT%	.250 (1-4)													
BPG	0.4	3PT%	-													
	<b>21 BAILEY EICHNER, G/F</b> SO./6-1/CUDAHY, WISC./CUDAHY	<table><tr><td>PPG</td><td>0.3</td><td>FG%</td><td>.111</td></tr><tr><td>RPG</td><td>1.3</td><td>FT%</td><td>.500 (1-2)</td></tr><tr><td>APG</td><td>0.2</td><td>3PT%</td><td>.000</td></tr></table>	PPG	0.3	FG%	.111	RPG	1.3	FT%	.500 (1-2)	APG	0.2	3PT%	.000	<ul style="list-style-type: none"><li>Looking to expand her role this year after seeing action in 17 games last year.</li><li>Grabbed a career-high six rebounds at Old Dominion (12/8/18).</li><li>Had a career-high four points and added a career-high five rebounds vs. JMU (2/2/18).</li><li>Made her collegiate debut in last year's season opener at Howard (11/11/17).</li><li>Three sport athlete in high school playing basketball, volleyball, and track &amp; field.</li></ul>	<b>POINTS</b> 4 vs. James Madison (2/2/18) <b>REBOUNDS</b> 6 at Old Dominion (12/8/18) <b>ASSISTS</b> 2 vs. Hofstra (1/19/18) <b>LAST GAME: DNP - INJURY</b>
PPG	0.3	FG%	.111													
RPG	1.3	FT%	.500 (1-2)													
APG	0.2	3PT%	.000													
	<b>25 GABBY ROGERS, C</b> SO./6-1/DALLAS, TEXAS/BISHOP LYNCH	<table><tr><td>PPG</td><td>4.2</td><td>FG%</td><td>.438</td></tr><tr><td>RPG</td><td>2.6</td><td>FT%</td><td>.882 (15-17)</td></tr><tr><td>SPG</td><td>0.7</td><td>3PT%</td><td>.000</td></tr></table>	PPG	4.2	FG%	.438	RPG	2.6	FT%	.882 (15-17)	SPG	0.7	3PT%	.000	<ul style="list-style-type: none"><li>Center that has started 18 games this season for the Tribe.</li><li>Notched her first career double-double with 14 points and 12 rebounds at CoFC (2/8).</li><li>Had eight points and tied a career-high with five rebounds in the win at Fairfield (12/2).</li><li>Scored a career-high 10 points and a steal at Davidson (11/24).</li><li>Notched a then-season-high eight points in the win at Loyola (11/17).</li></ul>	<b>POINTS</b> 14 at Charleston (2/8/19) <b>REBOUNDS</b> 12 at Charleston (2/8/19) <b>STEALS</b> 3 (3x) last time at Hofstra (1/4/19) <b>LAST GAME: DNP - SUSPENSION</b>
PPG	4.2	FG%	.438													
RPG	2.6	FT%	.882 (15-17)													
SPG	0.7	3PT%	.000													
	<b>30 VICTORIA REYNOLDS, F</b> JR./5-10/FAIRFAX, VA./ARCHBISHOP SPALDING	<table><tr><td>PPG</td><td>10.3</td><td>FG%</td><td>.440</td></tr><tr><td>RPG</td><td>5.7</td><td>FT%</td><td>.813 (52-64)</td></tr><tr><td>SPG</td><td>1.3</td><td>3PT%</td><td>.371</td></tr></table>	PPG	10.3	FG%	.440	RPG	5.7	FT%	.813 (52-64)	SPG	1.3	3PT%	.371	<ul style="list-style-type: none"><li>Recorded a double-double with 15 points and 15 rebounds against ECU (11/27/18).</li><li>Tied a season-high 17 points and five rebounds at Charleston (2/8).</li><li>Notched a season-high 17 points with 7 rebs vs. UNCW (1/11).</li><li>Poured in a career-high 22 points in the win at St. Francis (12/2/17).</li><li>Grabbed 18 boards in the win against Charleston (1/26/18).</li></ul>	<b>POINTS</b> 22 vs. St. Francis (Pa.) (12/2/17) <b>REBOUNDS</b> 18 vs. Charleston (1/26/18) <b>STEALS</b> 7 vs. Hofstra (1/28/18) <b>LAST GAME: 10 PTS, 4 REB, 3 AST</b>
PPG	10.3	FG%	.440													
RPG	5.7	FT%	.813 (52-64)													
SPG	1.3	3PT%	.371													
	<b>32 CAROLINE STOVER, C</b> FR./6-3/PLYMPTON, MASS./CARDINAL SPELLMAN	<table><tr><td>PPG</td><td>0.0</td><td>FG%</td><td>.000</td></tr><tr><td>RPG</td><td>0.0</td><td>FT%</td><td>-</td></tr><tr><td>APG</td><td>0.0</td><td>3PT%</td><td>-</td></tr></table>	PPG	0.0	FG%	.000	RPG	0.0	FT%	-	APG	0.0	3PT%	-	<ul style="list-style-type: none"><li>Made her collegiate debut in the Tribe's win over Loyola.</li><li>Freshman post player looking to break into the post rotation this season.</li><li>Played four seasons of varsity basketball at Cardinal Spellman.</li><li>Ranked as the No. 131 in her class by Blue Star.</li><li>Tabbed to the Catholic Central League All-Star team.</li></ul>	<b>POINTS</b> - <b>REBOUNDS</b> - <b>STEALS</b> - <b>LAST GAME: DNP - COACH'S DECISION</b>
PPG	0.0	FG%	.000													
RPG	0.0	FT%	-													
APG	0.0	3PT%	-													

**NOTES:**