



WILLIAM & MARY

MEDIA RELATIONS DIRECTOR: Andrew Phillips / PHONE: (757) 221-3344 / CELL: (804) 840-4439 / EMAIL: atphillips01@wm.edu

TRIBE BY THE NUMBERS

3

Sophomore Nyla Pollard hit a career-high 3, 3-pointers against James Madison on Sunday afternoon.

15.0

W&M is second in the CAA with 15.0 assists per game. The Tribe has 374 assists this season.

15

Senior Bianca Boggs now has 15 career 20-point performances. With her next 20-point game she will move into a tie for sixth place in W&M history.

55

Boggs ranks 55th in the country with 2.4 steals per game. Her 60 steals this year rank her 57th in the NCAA.

70

70 seems to be a magic number under Swanson. W&M has reached that mark 43 times under Swanson, and has posted a 39-8 mark when it scores more than 70 points.

90%

Since the start of CAA play, Eva Hodgson is shooting 90.9-percent from the free throw. She has connected on 40-of-44 from the stripe in the past 12 games.

236

Freshman Eva Hodgson has scored 236 points this season, which 49 points away from the top 10 in freshman history at W&M.

1345

Boggs now has 1,345 career points she needs five more points to move into sole possession seventh. With 23 points today, she can move all the way to sixth all-time.

WHEN REFERENCING WILLIAM & MARY AND TRIBE:

William & Mary: preferred in all but formal treatments
W&M: most informal, use as second reference or on scorebug
College of William & Mary: preferred formal treatment
Do not use: WM, William and Mary, College of William and Mary, The College of William and Mary, The College

The William & Mary Athletics official nickname is the Tribe. While the Griffin is the official mascot of William & Mary Tribe Athletics, do not reference teams or the school as the Griffins.

GAME

26

WILLIAM & MARY (12-13, 5-9 CAA) AT DREXEL (20-5, 12-2 CAA)

Friday, March 1, 2019 | 7:00 PM | Philadelphia, Pa. | Daskalakis Athletic Center
 Video: CAA.TV | Live Stats: DrexelDragons.com

SERIES HISTORY

ALL-TIME

Drexel leads 26-15

Last: Drexel, 62-58 (Kaplan Arena) (2/3/19)

AT DREXEL

Drexel leads 12-7

Last: Drexel, 54-34 (Daskalakis Athletic Center) (2/18/18)

W&M NEWS AND NOTES

- The William & Mary women's basketball team opens its final road trip of the regular season as it heads to Drexel on Friday, March 1. The Tribe and the Dragons are set for a 7 p.m. tipoff.

- Friday is the 42nd meeting between W&M and Drexel, with the Dragons leading the all-time series 26-15. The Tribe is looking even the series after Drexel picked up a 62-58 victory at Kaplan Arena earlier this year, Feb. 3. The Dragons also lead the series 12-7 at the Daskalakis Athletic Center.

- Senior Victoria Reynolds is averaging double-figures for the second consecutive season and is second on the team with 10.6 points per game. This year she has really improved her range from 3-point land and is connecting on 40.0-percent (18-of-44) from range. On Feb. 22, the junior set a new career-high with four 3-pointers.

- For the sixth time this season, W&M put four players into double-figures in its win at Elon on Feb. 17. The Tribe is 4-2 this season when four or more players score double digits.

- Freshman Eva Hodgson won her third CAA Rookie of the Week honor for the week Feb. 11. Hodgson averaged 18.5 points, 3.5 rebounds, and 2.0 assists per game during the week. The Tribe has won five weekly awards as Hodgson has also won on Dec. 3, Jan. 7, and Feb. 11, while senior Bianca Boggs was CAA Player of the Week on Dec. 31 and freshman Emma Krause was rookie of the week on Dec. 24.

- The Green and Gold is limiting its opponents to 29.1-percent (125-of-430) from 3-point range this season. The Tribe ranks third in the league in the category, but that is also good enough for 65th nationally.

- W&M has moved its free throw percentage back to first in the CAA shooting 75.1-percent from the stripe. W&M's free throw percentage ranks 29th in the country. The Tribe shot a perfect 16-for-16 from the line at James Madison on Jan. 25, which was the first time the Tribe was perfect from the line (minimum 8 attempts) since 2016.

- W&M has outscored its opponents 783-777 in the first half games this season but has been outscored 830-813 in the second half of games. W&M is 12-0 when it leads at the break, but is 0-13 when it trails or is tied at the half.

- The Green and Gold is hitting 3-pointers at the highest clip under Ed Swanson this season and has had five, or more, 3-pointers in 22 of its 25 games. W&M ranks first in the CAA hitting 7.4 3-pointers per game. That mark is two more than the next best average in the six-years under Swanson. As a team, the Tribe is hitting 34.8-percent from range, which is second in the CAA, and 59th in the NCAA. Furthermore, W&M has hit more than 10 3-pointers in six games this season.

- Hodgson has started every game this season and the returns on the rookie point guard have been good. The freshman has been in double-figures in 13 games. For the season, Hodgson is averaging 9.4 points per game (most among CAA freshman), with 2.8 rebounds, and 3.0 helpers per contest. Hodgson scored a career-high 24 points at UNCW on Feb. 10 and is shooting 90.9-percent from the stripe since the start of CAA play.

- Boggs has been in double-figures in 22 of 25 games this season and has accomplished that feat in 47 of her last 55 contests. Boggs was selected to the Preseason All-CAA First-Team after a breakout junior season. The senior captain leads the team with 16.8 points per night and has added 7.0 rebounds and 4.0 assists per night. She is one of three players nationally to lead her team in points, rebounds, assists, steals, and blocks as of Feb. 20. The senior has turned in 15, 20-point career games, which ranks her tied for seventh all-time in school history.

	Nov. 6	VCU	L, 55-72	Senior Bianca Boggs scored 15 points, but the Tribe couldn't overcome an early scoring drought falling to in-state rival VCU on opening night.
	NOV. 12	HOWARD	W, 88-75	Four players scored in double-figures as the Tribe picked up its first victory of the season. Senior Bianca Boggs led the Tribe with 26 points, nine rebounds, and seven assists.
	Nov. 17	at Loyola (Md.)	W, 65-49	The Tribe led throughout as it won its first road game of the season with a convincing 65-49 decision at Davidson. Boggs (14) and Reynolds (10) were both in double-figures.
	Nov. 24	at Davidson	L, 65-76	W&M fought all afternoon, but Davidson pulled away down the stretch as it fell to Davidson 76-65. Bianca Boggs notched a double-double with 18 points and 10 rebs.
	NOV. 27	ECU	W, 63-43	Both Victoria Reynolds and Nyla Pollard recorded a double-double as the Tribe cruised to a 20-point victory after previously unbeaten East Carolina.
	Nov. 30	at Hartford	L, 45-50	W&M couldn't overcome a cold shooting night as it shot just 22.2-percent (12-of-54) from the floor. Freshman Eva Hodgson led the team with a career-high 14 points.
	Dec. 2	at Fairfield	W, 60-54	The Tribe outscored the Stags 6-0 in the final moments to pick up its fourth win of the season. Senior Bianca Boggs scored a game-high 22 to pace the Tribe.
	Dec. 5	RICHMOND	W, 65-55	W&M never trailed as it picked up its third straight win against Richmond. Freshman Eva Hodgson (15 pts) and Harper Birdson (13 pts) both had career-highs.
	Dec. 8	at Old Dominion	L, 69-83	ODU snapped a three-game losing streak to the Tribe at home. Redshirt sophomore Harper Birdsong led the Tribe with a career-high 18 points.
	Dec. 21	at Norfolk State	W, 55-44	The Tribe used a strong defensive effort to gut out a 55-44 road win at Norfolk State following a 13-day lay-off. Sophomore Harper Birdsong had a game-high 14 points off of the bench.
	DEC. 29	GEORGE WASHINGTON	W, 73-59	Senior Bianca Boggs recorded her second double-double with 26 points and 10 rebounds as the Tribe topped GW in a wire-to-wire win, 73-59.
	Jan. 4	at Hofstra*	W, 60-55	Senior Bianca Boggs had another double-double (22 pts, 10 reb) and freshman Eva Hodgson had a career-high 18 points as W&M won its second-ever game at Hofstra.
	Jan. 6	at Northeastern*	L, 74-88	Three scored in double-figures, but W&M couldn't overcome a big second half from Northeastern. Senior Bianca Boggs recorded her third straight 20-point game with 21.
	JAN. 11	UNCW	W, 70-64	W&M closed the first quarter on 17-0 run and never looked back as it picked up a 70-64 victory over UNCW. Bianca Boggs had 25 points and Victoria Reynolds had 17.
	JAN. 13	CHARLESTON	L, 54-66	The Tribe tied the game three times, but couldn't overcome a fiery Charleston team. Senior Bianca Boggs scored a game-high 18 points in the contest.
	JAN. 20	ELON *	W, 65-60	W&M used a 15-3 run to end third quarter and start the fourth to topple defending CAA Champion Elon. Bianca Boggs and Harper Birdsong led the team with 13 points.
	Jan. 25	at James Madison *	L, 65-48	The Tribe couldn't shake a tough shooting night and a slow start as it fell at James Madison. Freshman Eva Hodgson led the Tribe with 13 points.
	Jan. 27	at Towson*	W, 80-69	Four scored in double-figures as the Tribe became the first team to win at SECU this arena with an 80-69 triumph. Senior Bianca Boggs finished with a game-high 22 points.
	FEB. 1	DELAWARE*	L, 59-70	W&M couldn't overcome a fast Delaware start as it fell at home to the visiting Blue Hens. Four scored in double-figures for the Tribe led by Reynolds with 14 points.
	FEB. 3	DREXEL*	L, 58-62	The Tribe made a furious fourth-quarter comeback, but Drexel held on to pick up a 62-58 victory. Senior Bianca Boggs scored 17 points to lead the Tribe.
	Feb. 8	at Charleston*	L, 77-79 (2ot)	Charleston's Tyler Collins hit a lay-up with 4.7 seconds left in double overtime to sink the Tribe in Charleston. Senior Bianca Boggs poured a game-high 23 points.
	Feb. 10	at UNCW*	L, 58-66	UNCW scored the final 10 points of the game to even the season series against the Tribe at Trask Coliseum. Freshman Eva Hodgson scored a career-high 24 to lead W&M.
	Feb. 17	at Elon *	W, 64-59	The Tribe scored 15 of the first 17 points and the last five points of the game to snap its skid. Four were in double-figures led by freshman Eva Hodgson with 14 points.
	FEB. 22	TOWSON*	L, 75-82	Towson used a fourth quarter rally to squeak by W&M at Kaplan Arena on Friday night. Senior Bianca Boggs had 18 points, while sophomore Gabby Rogers scored 17 points.
	FEB. 24	JAMES MADISON*	L, 65-78	W&M fought to the end, but fell to first-place James Madison. Both senior Bianca Boggs and junior Victoria Reynolds scored 16 points to lead the Tribe.
	March 1	at Drexel* Video: CAA.TV	7 PM	Drexel and W&M meet for the final time in the regular season when the Tribe travels to Philly. The Dragons are the defending CAA regular season champion.
	March 3	at Delaware* Video: CAA.TV	2 PM	The Tribe heads to the site of the 2019 CAA Tournament when it travels to Delaware. W&M is 3-2 under Ed Swanson at Delaware during his tenure.
	MARCH 7	NORTHEASTERN* Video: TribeAthletics.TV	7 PM	The Green and Gold plays host to Northeastern in its penultimate regular season game. The Tribe has a seven-game winning streak against the Huskies in Williamsburg.
	MARCH 9	HOFSTRA* Video: TribeAthletics.TV	2 PM	W&M closes the regular season with the team it started CAA play against. The Tribe picked up a 63-53 victory over the Pride at Kaplan Arena last year.
	Mar. 13-16	CAA Championship		Delaware hosts the 2019 CAA Tournament at the Bob Carpenter Center in Newark, Del. The event runs from March 13-16.



GENERAL INFORMATION

Name: College of William & Mary
Location: Williamsburg, Va.
Founded: 1693 (2nd oldest college in U.S.)
Enrollment (includes graduate): 8,617
Nickname: Tribe
Colors: Green, Gold and Silver
Arena (capacity): Kaplan Arena (8,600)
Affiliation: NCAA Division I
Conference: Colonial Athletic Association (CAA)
President: Katherine A. Rowe (Carleton, 1984)
Chancellor: Robert M. Gates (William & Mary, 1965)
Director of Athletics: Samantha K. Huge (Gordon, 1992)

LAST GAME STARTERS

2

BIANCA BOGGS

Sr. • G • 5-9

Waldorf, Md./St. Mary's Ryken

- Named team captain for the 2018-19 season.
- Tabbed CAA Player of the Week for the week of Dec. 31.
- Has 15 20-point games, including eight 20-point games this season.
- Scored a career-high 33 points in a win at St. Francis (12/2/17).
- Ranks ninth in school history with 1,345 career points.

G-GS	PPG	RPG	APG	FG%	3P%	FT%	STL	BLK
25-25	16.8	7.0	4.0	.423	.333	.729	60	21

10

EVA HODGSON

Fr. • G • 5-9

Rindge, N.H./New Hampton School

- Named CAA Rookie of the Week for the week of Dec. 3, Jan. 7, and Feb. 11.
- Poured in a career-high 24 points at UNCW (2/10).
- Scored a then-career-high 18 points in the CAA opening win at Hofstra (1/4).
- Netted 13 pts and grabbed a CH six boards with five dimes in the win at Towson (1/20).
- Her parents and two brothers all played Division III basketball.

G-GS	PPG	RPG	APG	FG%	3P%	FT%	STL	BLK
25-25	9.4	2.8	3.0	.425	.371	.829	36	11

11

NYLA POLLARD

So. • G • 5-9

Virginia Beach, Va./Princess Anne

- Made her first start of the year & had a double-double (10 pts, 12 reb) vs. ECU (11/27).
- Scored nine points on three 3-pointers and grabbed two boards against JMU (2/24).
- Had nine points and added two rebounds, four assists, and a steal at Loyola (11/17).
- Scored a career-high 14 points, four assists, three rebounds against Upstate (12/5/17).

G-GS	PPG	RPG	APG	FG%	3P%	FT%	STL	BLK
25-21	4.5	2.8	2.6	.300	.269	.684	26	3

25

GABBY ROGERS

So. • C • 6-2

Dallas, Texas/Bishop Lynch

- Named a team captain for her senior season.
- Key reserve in the post that has appeared in 64 career games.
- Made her first career start at UNCW (2/10) & grabbed a CH six boards in a CH 20 mins.
- Tied a career-high with four points in a win at St. Francis (12/1/17).
- Rejected 28 shots during her career.

G-GS	PPG	RPG	APG	FG%	3P%	FT%	STL	BLK
24-21	4.4	2.8	0.3	.464	.000	.889	15	8

30

VICTORIA REYNOLDS

Jr. • F • 5-10

Fairfax, Va./Archbishop Spalding

- Recorded a double-double with 15 points and 15 rebounds against ECU (11/27/18).
- Tied a season-high 17 points and five rebounds at Charleston (2/8).
- Notched a season-high 17 points with 7 rebs vs. UNCW (1/11).
- Poured in a career-high 22 points in the win at St. Francis (12/2/17).
- Grabbed 18 boards in the win against Charleston (1/26/18).

G-GS	PPG	RPG	APG	FG%	3P%	FT%	STL	BLK
25-22	10.8	5.4	2.1	.423	.333	.800	33	16

RESERVES

POS.	NO.	NAME	HT.	CL.	G-GS	PPG	RPG	APG	FG%	3P%	FT%	MISC.
G	0	Libby Underwood	5-9	So.	12-0	0.8	0.3	0.2	.308	.000	.500	1 stl
NOTE: Scored six points in the second half of the game versus VCU (11/6).												
G	1	Sydney Wagner	5-6	So.	-	-	-	-	-	-	-	-
NOTE: Transfer from Stetson that has to sit out the 2018-19 season due to NCAA Transfer Rule												
G	3	Ashley Taylor	5-8	Jr.	4-0	0.3	0.0	0.0	.000	.000	.500	-
NOTE: Has appeared in 24 career games in career.												
G/F	5	Misha Jones	5-9	Sr.	25-3	3.5	1.8	1.0	.409	.354	.889	3 stl
NOTE: Matched a career-high with nine points vs. UNCW (1/11)												
G	12	Harper Birdsong	5-10	R-So.	25-4	10.0	1.8	1.1	.386	.392	.727	18 stl
NOTE: First player off of the bench; Scored a career-high 18 at ODU (12/5).												
F	15	Emma Krause	6-2	Fr.	25-3	4.3	2.0	0.6	.356	.338	.583	12 blk
NOTE: Been in double-figures twice this season; Had a career-high 14 points against Howard.												
C	20	Chandler Smith	6-3	Sr.	12-1	0.2	1.3	0.1	.333	.000	.250	4 blk
NOTE: Named a team captain for the season; Appeared in 65 career games.												
G/F	21	Bailey Eichner	6-1	So.	15-0	0.5	1.1	0.2	.250	.250	.500	3 stl
NOTE: Scored a career-high five vs. JMU (2/24); Had a career-high six rebounds at ODU (12/5)												
C	32	Caroline Stover	6-3	Fr.	2-0	0.0	0.0	0.0	.000	.000	.000	-
NOTE: Ranked as the No. 131 recruit in her class on BlueStar												

W&M INDIVIDUAL SUPERLATIVES

Double-Digit Games	16-17	17-18	18-19	Career	Double-Doubles	16-17	17-18	18-19	Career
Bianca Boggs	8	25	22	64	Bianca Boggs	-	1	4	6
Victoria Reynolds	4	15	17	36	Victoria Reynolds	-	1	1	2
Harper Birdsong	-	-	15	15	Nyla Pollard	-	-	1	1
Eva Hodgson	-	-	13	13	Gabby Rogers	-	-	1	1
Nyla Pollard	-	3	1	4	Leading Scorer (times): - Boggs (16), Hodgson (5), Birdsong (3), Reynolds (3)				
Gabby Rogers	-	-	3	3					
Emma Krause	-	-	2	2					
20-Point Games	16-17	17-18	18-19	Career	Leading Rebounder (times):	- Boggs (12), Reynolds (10), Rogers (3), Eichner (1), Hodgson (1), Jones (1), Pollard (1)			
Bianca Boggs	-	7	8	15	Leading Assists (times): - Boggs (14), Hodgson (8), Pollard (4), Reynolds (2), Birdsong (2), Jones (1)				
Eva Hodgson	-	-	1	1					
Victoria Reynolds	-	1	-	1					
30-Point Games	16-17	17-18	18-19	Career	Charges (times):	- Jones (14), Hodgson (9), Rogers (6), Eichner (6), Birdsong (1), Boggs (1)			
Bianca Boggs	-	1	-	1	Three-Point Plays (Made/Attempted):	- Birdsong (3/3), Krause (2/2), Rogers (2/2), Hodgson (1/1), Jones (1/1), Boggs (17/20), Reynolds (1/3), Pollard (0/2)			
10-Rebound Games	16-17	17-18	18-19	Career	Four-Point Plays (Made/Attempted):	- Jones (1/1)			
Bianca Boggs	1	1	5	7					
Victoria Reynolds	-	4	3	7					
Gabby Rogers	-	-	1	1					
10-Assist Games	16-17	17-18	18-19	Career					

WOMEN'S BASKETBALL INFORMATION

Head Coach: Ed Swanson (Sacred Heart, 1989)
Record at W&M: 86-90 (sixth season)
Career Record: 492-354 (29th season)
Assistant Coach: Lynne-Ann Kokoski (Bryant, 2008)
Assistant Coach: Chanel Murchison (William & Mary, 2013)
Assistant Coach: Tierra Rudd (Winston-Salem, 2008)
Dir. of Operations: Michelle Kurowski (UMBC, 2011)
2017-18 Record (CAA): 16-14 (7-11/6th)
Starters Returning/Lost: 3/2
Letterwinners Returning/Lost: 10/4
First Year of Basketball: 1919-20
All-Time Record: 666-966-9
WNIT Appearances: None
NCAA Appearances: None

TRIBE TRENDS

WILLIAM & MARY RECORD	
Overall.....	12-13
CAA Games.....	5-9
Leads at halftime.....	12-0
Trails at halftime.....	0-10
Tied at Halftime.....	0-3
Home.....	6-6
Away.....	6-7
Neutral.....	0-0
BY MONTH	
November.....	3-3
December.....	4-1
January.....	4-3
February.....	1-6
March.....	0-0
SCORING...	
W&M scores fewer than 40 pts.....	0-0
W&M scores 40-49.....	0-2
W&M scores 50-59.....	1-5
W&M scores 60-69.....	7-3
W&M scores 70-79.....	2-3
W&M scores 80+.....	2-0
Opp. scores fewer than 40 pts.....	0-0
Opp. scores 40-49.....	3-0
Opp. scores 50-59.....	6-1
Opp. scores 60-69.....	3-4
Opp. scores 70-79.....	0-5
Opp. scores 80+.....	0-3
FROM THE FIELD ...	
W&M shoots below 35%.....	0-3
W&M shoots better than 35%.....	12-10
W&M shoots better than 40%.....	9-3
W&M shoots better than 45%.....	10-2
W&M shoots better than 50%.....	1-1
FINAL MARGIN	
1-3 points.....	0-1
4-7 points.....	5-3
8-10 points.....	1-1
11-15 points.....	4-6
16+ points.....	2-2
In Overtime.....	0-0
BATTLE OF THE BOARDS	
Outrebounding opponent.....	3-1
Outrebounded by opponent.....	8-11
Rebounds are even.....	1-1
DOWN TO THE WIRE	
Leading with 5:00 left.....	10-2
Trailing with 5:00 left.....	1-10
Tied with 5:00 left.....	1-1
LAYING IT ON THE LINE...	
W&M attempts more free throws.....	4-3
Opp. attempts more free throws.....	7-9
Free Throws are even.....	1-1
JERSEY COLOR	
White.....	5-3
Green.....	5-5
Gold.....	2-4
Pink.....	0-1
STRENGTH OF OPPOSITION	
vs. Top 25 teams.....	0-0
vs. teams with a winning record.....	4-7
vs. teams .500 record.....	1-0
vs. teams with a losing record.....	7-5
STREAKING	
Coming off of a win.....	4-8
Coming off of a loss.....	8-4
Longest Winning Streak.....	W3
Longest Losing Streak.....	L4
Current Streak.....	L2

**Team**

W&M scored 80+ points	1/27/2019	80 (80-69, W at Towson)
W&M scored 85+ points	11/12/2018	88 (88-75, W vs. Howard)
W&M scored 90+ points	12/2/2017	92 (92-86, W at St. Francis (Pa.))
W&M scored 95+ points	2/16/2014	97 (97-44 W, vs. UNCW)
Opponent scored 80+	2/22/2019	82 (75-82 L, vs. Towson)
Opponent scored 85+	2/2/2017	86 (41-86, L vs. James Madison)
Opponent scored 90+	11/17/2017	92 (92-81 L, at St. John's)
W&M grabbed 50+ rebounds	11/27/2018	58 (63-43 W, vs. East Carolina)
W&M grabbed 60+ rebounds	12/21/2006	60 (73-58 W, at Norfolk State)
Held an Opponent to 50 pts. or less	12/21/2018	44 (55-44, W at Norfolk State)
Held an Opponent to 40 pts. or less	12/3/2016	39 (67-39, W vs. Richmond)
W&M was held under 50 pts.	1/25/2019	48 (48-65 L, at James Madison)
Shot 50% from the field	2/22/2019	50.0% (26-for-52) (75-82, L vs. Towson)
Shot 80-89% from the foul line (8 or more attempts)	2/24/2019	87.5% (14-for-16) (65-78, L vs. James Madison)
Shot 90-99% from the foul line (8 or more attempts)	2/9/2018	90.0 (9-for-10) (59-68, L at Delaware)
Shot 100% from the foul line (8 or more attempts)	1/25/2019	100% (16-for-16) (48-65, L at James Madison)
Had a 20-pt. win	11/27/2018	20 (63-43 W, vs. East Carolina)
Had a 30-pt. win	11/28/2016	34 (W, 82-48 vs. Delaware State)
Had a 40-pt. win	2/16/2014	53 (97-44 W, vs. UNCW)
Had a 50-pt. win	2/16/2014	53 (97-44 W, vs. UNCW)
Had a 20-pt. loss	3/1/2018	21 (L, 61-82 at Elon)
Had a 30-pt. loss	2/2/2018	45 (L, 41-86 vs. James Madison)
An overtime win	11/21/2017	71-65, W at East Carolina
An overtime loss	2/8/2019	77-79, L at Charleston (2ot)
A double-overtime game	2/8/2019	77-79, L at Charleston
A triple-overtime game	11/29/1999	77-83, L at VCU
10-game winning streak	2016-17	11 (11/18/2016-1/6/17)
5-game winning streak	2017-18	7 (11/21/2017-12/21/2017)
5-game losing streak	2017-18	7 (2/16/2018-11/12/2018)
10-game losing streak	2012-13	11 (11/25/2012-1/20/2013)

Individual

20-24 pts.	24, Eva Hodgson at UNCW, 2/10/19
25-29 pts.	25, Bianca Boggs vs. UNCW, 1/11/19
30-34 pts.	33, Bianca Boggs at St. Francis (Pa.), 12/2/17
35-39 pts.	39, Lynn Norenberg at Virginia Wesleyan, 11/15/80
40+ pts.	53, Bebe Fisher vs. Norfolk Division, 2/13/52
5 players in double figures	Bianca Boggs (26), Victoria Reynolds (15), Abby Rendle (12), Nari Garner (11), Jenna Green (10) vs. College of Charleston, 1/26/18
Two players with 20 pts. or more	Jenna Green (22) and Bianca Boggs (21) at Towson, 2/4/18
Player with 10-14 rebounds	10, Bianca Boggs at UNCW, 2/10/19
Player with 15-19 rebounds	15, Victoria Reynolds vs. East Carolina, 11/27/18
Player with 20 or more rebounds	21, Emily Correal vs. George Mason, 3/16/13
Two players with 10 or more rebounds	15, Victoria Reynolds, 12, Nyla Pollard, & 11 Bianca Boggs vs. ECU, 11/27/18
A player with a triple-double	Abby Rendle (25 pts, 17 reb, 10 blks) at East Carolina, 11/21/17
A player with a double-double	Bianca Boggs (16 pts, 10 reb) at UNCW, 2/10/19
Two players with double-doubles	Victoria Reynolds (15 pts, 15 reb) & Nyla Pollard (10 pts, 12 reb.) vs. ECU, 11/27/18
100% from the field (min. 5 made)	7-for-7, Abby Rendle vs. Drexel, 3/1/17
100% from foul line (min. 5 made)	8-for-8, Bianca Boggs vs. James Madison, 2/24/19
5-7 Assists	7, Bianca Boggs vs. James Madison, 2/24/19
8-9 Assists	8, Bianca Boggs vs. Towson, 2/22/19
10+ Assists	11, Jenna Green vs. College of Charleston, 1/26/18
5 or more steals	5, Bianca Boggs at UNCW, 2/10/19
5-9 blocks	6, Abby Rendle at Delaware, 2/9/18
10+ blocks	11, Abby Rendle vs. College of Charleston, 1/26/18

BOLD - Happened in the 2018-19 season

**LIBBY UNDERWOOD**

So. • Guard • 5-9
Rye, New Hampshire

**SYDNEY WAGNER**

So. • Guard • 5-6
Phoenixville, Pa.

**BIANCA BOGGS**

Sr. • Guard • 5-5
Waldorf, Md.

**ASHLEY TAYLOR**

Jr. • Guard • 6-0
Charlottesville, Va.

**MISHA JONES**

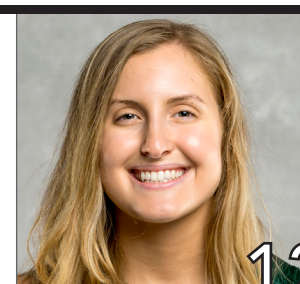
Sr. • Guard/Forward • 5-9
Manassas Park, Va.

**EVA HODGSON**

Fr. • Guard • 5-9
Rindge, New Hampshire

**NYLA POLLARD**

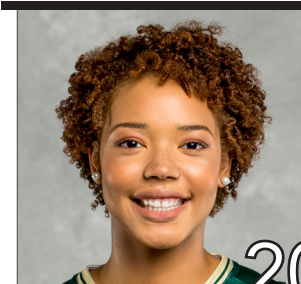
So. • Guard • 5-9
Virginia Beach, Va.

**HARPER BIRDSONG**

R-So. • Guard • 5-10
Suffolk, Va.

**EMMA KRUSE**

Jr. • Center • 6-3
Port Tobacco, Md.

**CHANDLER SMITH**

Sr. • Center • 6-3
Port Tobacco, Md.

**BAILEY EICHNER**

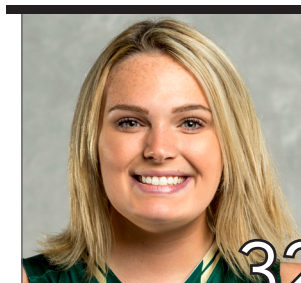
So. • Guard/Forward • 6-1
Cudahy, Wisc.

**GABBY ROGERS**

Fr. • Center • 6-1
Dallas, Texas

**VICTORIA REYNOLDS**

Jr. • Forward • 5-10
Fairfax, Va.

**CAROLINE STOVER**

Fr. • Center • 6-3
Plympton Mass.

**ED SWANSON**

Sixth Season at W&M
29th Overall

PRONUNCIATION GUIDE

Bailey **EICHNER** IKE-ner

Lynne **KOKOSKI**
Kah-kaw-ski

CHANEL Murchison Shh-nell



ED

SWANSON

HEAD COACH

29TH SEASON OVERALL

6TH SEASON AT W&M

PROFILE

Wife: Marion

Children: Connor and Matthew

Education

Sacred Heart, 1989

Coaching Career

Sacred Heart (1989-13)

William & Mary (2013-P)

CAREER HIGHLIGHTS

- Three NCAA Tournament Appearances
- Led W&M to 1st Division I Postseason berth in the WBI.
- Led W&M to a school record 20 wins in 2016-17
- 2016-17 VaSID Coach of the Year
- Six Postseason Appearances
- Four regular season conference championships and three postseason league titles
- 2009 New England Hall of Fame Inductee
- Eight 20-win seasons
- Five-time Conference Coach of the Year
- On five occasions, his teams have earned to the WBCA Academic Top 25 Team Honor

Ed Swanson enters his sixth season with the Green and Gold. He became the fifth Division I head women's basketball coach in William and Mary history on May 7, 2013. Prior to coming to Williamsburg, he spent 23 years transforming Sacred Heart University from a Division II program into a one of the top teams in the Northeast Conference. Swanson owns a career record of 464-327 (.587).

The success continued for the Tribe during the 2017-18 season. W&M won 16 games, which is tied for the fourth most in school history, and posted its second straight winning season for the first time since 2005-06 and 2006-07. His first recruiting class became the winningest class in school history with the team's victory over College of Charleston on Jan. 26. The seniors went onto win 66 games during their four year career. The Tribe raced out to an 11-2 start for the third straight season, which equaled the best 13-game start in school history, and led the CAA in blocked shots (218) and blocked shots per game (7.3), which ranked fourth and third in the NCAA, respectively. Both numbers are single-season school records. Individually, he mentored three players to five All-CAA awards, including All-CAA First-Team selection Bianca Boggs, who became the first Tribe player in a decade to be named to the league's first-team. Additionally, Boggs was named to the league's all-defensive team, while Abby Rendle claimed a spot on the All-CAA Third-Team, and All-Defensive Team, and freshman Nyla Pollard was picked to the CAA All-Rookie team.

Swanson led the Tribe to one of its best seasons in program history in 2016-17. The Tribe tied a school record with 20 wins, while winning a CAA Tournament game for the first time since 2009, and advancing to the CAA Semifinals for the first-time since 2001. Under his leadership, the Tribe won 11-straight games, which is the longest single-23056season streak in school history, from Nov. 18, 2016-Jan. 2, 2017. W&M had four players claim seven all-conference awards this season, including seniors Alexandra Masaquel and Marlena Tremba, who each earned second-team citations. Additionally, Masaquel was tabbed the Richmond Times-Dispatch All-State Second-Team, while Tremba earned VaSID All-State Second-Team honors. For his efforts, VaSID honored him as the Virginia State Coach of the Year.

Once again Swanson's third season was one for the record books. The Tribe raced out to its best start in school history with an 11-2 record. W&M went onto again to win the fourth most wins in school history with 15. For the second straight season the Tribe broke the blocks and assist record, by tying the single season assist record (466) and broke the school record for blocks with 148. During the season junior Marlena Tremba became the 15th player in school history to break the 1000-point barrier. Individually, four players earned All-CAA awards as junior Alexandra Masaquel was tabbed to the second-team and all-defensive team, Tremba earned third-team honors, and freshman Bianca Boggs picked up a spot on the all-rookie team. The Tribe was also rewarded for its hard work in the classroom as Masaquel, Tremba, and sophomore Jenna Green earned all-academic team honors.

Swanson's second year with the Green and Gold was one for the record books. The Tribe racked up 15 wins, the fourth-most in school history, on its way to its first-ever postseason appearances with bid in the Women's Basketball Invitational. The Green and Gold had a seven-win turnaround, while setting three school records for assists (466), blocked shots, (143), blocked shots per game (4.5). Individually he helped lead four players to five All-CAA awards. Sophomore Marlena Tremba was named to the All-CAA Third-Team, senior Jazmen Boone was named to the All-Defensive Team, freshman Abby Rendle to the All-Rookie and All-Defensive team, and senior Kyla Kerstetter earned all-academic honors.

In his first season with the Tribe, Swanson led a young team to eight victories in a seven-seed in the CAA Tournament. The Green and Gold finished in the top 10 nationally in steals per game, while Jazmen Boone also ranked in the top 20 in the NCAA in the same category. Under his guidance Kaitlyn Mathieu garnered Third-Team All-Colonial Athletic Association honors, and went on to sign a professional contract with a team in Germany. In addition, guard Marlena Tremba went onto win CAA Rookie of the Year, and was named to the all-rookie squad. Boone was named to the all-defensive team, while she and Kyla Kerstetter took home all-academic honors.

Swanson oversaw Sacred Heart's transition from Division II to Division I in 1999-00, and the program took off under his direction. Over Sacred Heart's 14 years in Division I, Swanson led SHU



to a 280-145 record (.664), including a 190-62 (.754) record in the NEC. He departed as the NEC's all-time winningest head coach with all of his SHU teams finishing third or higher in the league standings. Swanson-lead teams have posted 13 straight winning seasons and 12 straight campaigns with 18 or more victories, including six with 20 or more wins. In 2009, he was inducted into the New England Basketball Hall of Fame.

In total, Swanson-coached players earned 19 All-NEC honors, including nine first-team awards, nine NEC All-Tournament Team honors, eight NEC All-Rookie Team selections, four NEC Rookies of the Year, three NEC Tournament MVPs and three NEC Players of the Year.

His teams have also enjoyed success in the classroom. On five occasions, the Pioneers were selected to the Women's Basketball Coaches Association (WBCA) Academic Top 25 Team Honor Roll, which has recognized outstanding academic performances from the top teams in each of the five collegiate divisions since 1995-96. On eight occasions since 2003, one of his players was a CoSIDA Academic All-District selection and two Pioneer players were named NEC Scholar-Athlete of the Year.

In 2012-13, Swanson led Sacred Heart to its third straight postseason appearance, and in the process, recorded his 400th career victory. His milestone win came on Feb. 12, 2013 as the Pioneers defeated Fairleigh Dickinson. SHU completed the season at 22-11, finishing second in the NEC with a 13-5 ledger and garnering a berth in the program's first Women's National Invitational Tournament (WNIT).

Sacred Heart claimed its third NEC Championship and advanced to the NCAA Tournament in 2011-12. The Pioneers also ranked 23rd nationally in the WBCA Academic Top 25 Team Honor Roll with a team GPA of 3.35. SHU compiled a season mark to 25-8, winning both the regular season and postseason crowns in the league as Swanson was named NEC Coach of the Year for the fourth time.

The Pioneers earned a berth in the 2011 Women's Basketball Invitational and finished the year at 18-13 with a 12-6 mark in the NEC. After a 0-5 start to the 2008-09 season, Swanson's Pioneers reeled off a 21-game winning streak, the longest in school history and second longest in the country, before finishing with 25-8 record. SHU completed the NEC regular season with a perfect 18-0 mark, becoming just the third team in the history of the conference to accomplish the feat. Swanson earned NEC Coach of the Year honors as Sacred Heart finished off an amazing season by capturing its second league title and trip to the NCAA Tournament over a four-year span. During the 2008-09 season, Swanson moved past former Mount St. Mary's head coach Bill Sheahan (124) as all-time leader in Northeast Conference wins and eclipsing the 300-win plateau in his career.

The 2005-06 season saw Swanson lead the Sacred Heart program to its first NCAA Tournament, capturing the NEC Championship in just its seventh season at the Division I level. Swanson guided the Pioneers to a school record 26-5 record, including a 16-2 NEC ledger. He also garnered career victory No. 250 during the season.

Under his leadership, Sacred Heart was one of the toughest teams on its home court, the William H. Pitt Center, which opened in 1997. During the Pitt Center's opening 16 seasons, Swanson's teams won 81.9 percent (185-41) of its home games. In 2011-12, SHU went 15-1 at home, a season bested only by a perfect 15-0 in 2005-06 and 14-0 in 2003-04. During the stretch, the Pioneers' home winning percentage at the Pitt Center ranked among the best nationally.

After directing the Pioneers to a 20-7 record — the program's first 20-win season — in 1995-96, Swanson was voted Coach of the Year in the New England Collegiate Conference (NECC) and the Women's Basketball Coaches Association's (WBCA) District I.

Swanson took the reins of the Sacred Heart University women's basketball program in 1990 and built the Pioneers into one of the top teams in the Northeast. He joined Dave Bike's men's basketball coaching staff at SHU in 1989, and, after becoming head coach of the Pioneer women's program in 1990, did double duty for three seasons before becoming the University's first full-time women's coach in 1993. Prior to Swanson's arrival,

CAREER RECORD

YEAR	OVERALL RECORD	CONF. RECORD	CONF. FINISH	POST SEASON
1990-91	8-19	3-11	7th	
1991-92	11-16	5-9	T5th	
1992-93	16-13	7-7	4th	
1993-94	12-15	8-8	5th	
1994-95	11-16	7-9	5th	
1995-96	20-7	16-4	T2nd	
1996-97	14-14	10-8	5th	
1997-98	19-7	13-3	2nd	
1998-99	15-12	12-6	3rd	
1999-00	14-14	11-7	T3rd	
2000-01	15-14	11-7	T3rd	
2001-02	18-11	13-5	T2nd	
2002-03	18-10	12-6	T3rd	
2003-04	21-8	14-4	2nd	
2004-05	18-11	14-4	2nd	
2005-06	26-5	16-2	1st	NCAA
2006-07	22-10	15-3	T1st	
2007-08	19-11	14-4	3rd	
2008-09	25-8	18-0	1st	NCAA
2009-10	19-11	14-4	3rd	
2010-11	18-13	12-6	T3rd	WBI
2011-12	25-8	15-3	1st	NCAA
2012-13	22-11	13-5	2nd	WNIT
2013-14	8-21	5-11	8th	
2014-15	15-16	9-9	6th	WBI
2015-16	15-15	6-12	7th	
2016-17	20-11	9-9	4th	
2017-18	16-14	7-11	6th	
2018-19	12-13	5-9		
Career	492-354 (.582)	297-188 (.612)		
Division I	366-235 (.609)	232-123 (.654)		
W&M/CAA	86-90 (.489)	41-61 (.40)		

the Sacred Heart women's team compiled a 4-21 record. Under his guidance, the climb to Division II respectability was accomplished within three seasons, from 8-19 to 11-16 and, in 1992-93, to 16-13 — the program's first winning record in 11 seasons.

In his time at SHU, he was a four-time NEC Coach of the Year, led Sacred Heart to five postseason bids, including three NCAA Tournament appearances. Swanson guided the Pioneers to four NEC regular season crowns and three NEC tournament championships. SHU posted 20-win seasons seven times during his tenure, including five of the last eight years.

He earned a bachelor's degree in business from Sacred Heart in 1989. Also during his tenure at SHU, Swanson served as the moderator for the Pioneer Student-Athlete Council from 1998-01 and was the annual coordinator of commencement exercises since 2000. Swanson and his wife, Marion, have two sons, Connor and Matthew.



#0 LIBBY UNDERWOOD

SOPHOMORE - GUARD

RYE, N.H. - PORTSMOUTH

>> UNDERWOOD'S CAREER HIGHS

MINUTES

Season 13 vs. VCU, 11/6/18
Career 15 vs. USC Upstate, 12/5/17

POINTS

Season 6 vs. VCU, 11/6/18
Career 8 vs. USC Upstate, 12/5/17

REBOUNDS

Season 2 at James Madison, 1/25/19
Career 3 at Northeastern, 1/21/18

FIELD GOALS

Season 3 vs. VCU, 11/6/18
Career 3 vs. VCU, 11/6/18

3-POINT FIELD GOALS

Season -
Career 1 (3x) last time vs. Upstate 12/5/17

FREE THROWS

Season 1 (2x) last time at NU, 1/6/18
Career 5 vs. USC Upstate, 12/5/17

ASSISTS

Season 1 (2x) last time at JMU, 1/25/19
Career 3 vs. USC Upstate, 12/5/17

STEALS

Season 1 at Old Dominion, 12/8/18
Career 1 (3x) last time at ODU, 12/8/18

BLOCKS

Season 1 vs. VCU, 11/6/18
Career 1 vs. VCU, 11/6/18

MISCELLANEOUS

Career in Double Figures 0
2018-19 in Double Figures 0

>> 2018-19 GAME-BY-GAME

Opp	Date	GS	Min	FG-A	3FG-A	FT-A	Reb.	A	TO	BLK	STL	PTS
VCU	11/6	14	3-4	0-1	0-0	0	1	1	0	1	6	
HOW	11/12	2	0-1	0-0	0-0	1	0	0	0	0	0	
at Loy	11/17	11	0-1	0-0	0-0	0	0	0	0	0	0	
at DC	11/24	6	0-1	0-1	0-0	0	0	0	0	0	0	
ECU	11/27		DNP - COACH'S DECISION									
at Hart	11/30	2	0-0	0-0	0-0	0	0	0	0	0	0	
at Fair	12/2		DNP - COACH'S DECISION									
UOFR	12/5	1	1-1	0-0	0-0	0	0	0	0	0	2	
at ODU	12/8	10	0-1	0-0	1-2	0	0	2	0	1	1	
at NSU	12/21	5	0-0	0-0	0-0	0	0	2	0	0	0	
GW	12/28	3	0-0	0-0	0-0	0	0	0	0	0	0	
at Hof	1/4		DNP - COACH'S DECISION									
at NU	1/6	8	0-1	0-1	1-2	0	0	1	0	0	1	
UNCW	1/11		DNP - COACH'S DECISION									
COFC	1/13		DNP - COACH'S DECISION									
ELON	1/20		DNP - COACH'S DECISION									
at JMU	1/25	2	0-2	0-0	0-0	2	1	0	0	0	0	
at Tow	1/27		DNP - COACH'S DECISION									
DEL	2/1		DNP - COACH'S DECISION									
DREXEL	2/3	3	0-1	0-0	0-0	0	0	0	0	0	0	
at CofC	2/8		DNP - COACH'S DECISION									
at UNCW	2/10		DNP - COACH'S DECISION									
at Elon	2/17		DNP - COACH'S DECISION									
TOW	2/22		DNP - COACH'S DECISION									
JMU	2/24		DNP - COACH'S DECISION									

>> UNDERWOOD'S CAREER STATISTICS

Season	GP	GS	Min/Avg	FG-FGA	Pct	3pt-Att	Pct	FT-FTA	Pct	Off	Def	Reb	Avg	PF	FO	A	TO	Blk	S	TP	Avg
2017-18	27	0	162/6.0	6-30	.200	3-15	.200	14-22	.636	2	14	16	0.6	10	0	8	21	0	2	29	1.1
2018-19	12	0	65/5.4	4-13	.308	0-3	.000	2-4	.500	3	0	3	0.3	1	0	2	6	1	1	10	0.8
CAREER	39	0	227/5.8	10-43	.233	3-18	.167	16-26	.615	5	14	19	0.5	11	0	10	27	1	3	39	1.0



#2 BIANCA BOGGS

SENIOR - GUARD

WALDORF, MD. - ST. MARY'S RYKEN

>> BOGGS' CAREER HIGHS

MINUTES

Season 48 at Charleston, 2/8/19
Career 48 at Charleston, 2/8/19

POINTS

Season 26 (2x) last time vs. GW, 12/28/18
Career 33 at St. Francis (Pa.), 12/2/17

REBOUNDS

Season 11 (2x) last time at JMU, 1/25/19
Career 11 (3x) last time at JMU, 1/25/19

FIELD GOALS

Season 10 (2x) last time vs. GW, 12/28/18
Career 12 at St. Francis (Pa.), 12/2/17

3-POINT FIELD GOALS

Season 4 (2x) last time vs. CofC, 1/13/19
Career 4 (4x) last time vs. CofC, 1/13/19

FREE THROWS

Season 8 vs. James Madison, 2/24/19
Career 8 (3x) last time vs. JMU, 2/24/19

ASSISTS

Season 8 vs. Towson, 2/22/19
Career 8 (2x) last time vs. Tow., 2/22/19

STEALS

Season 6 at Hartford, 11/30/18
Career 7 vs. Charleston, 1/26/18

BLOCKS

Season 3 vs. GW, 12/28/18
Career 4 vs. Hofstra, 1/28/18

MISCELLANEOUS

Career in Double Figures 64
2018-19 in Double Figures 22

>> 2018-19 GAME-BY-GAME

Opp	Date	GS	Min	FG-A	3FG-A	FT-A	Reb.	A	TO	BLK	STL	PTS
VCU	11/6	*	34	6-16	1-3	2-3	6	4	3	1	5	16
HOW	11/12	*	35	10-22	1-5	5-5	9	7	4	0	1	26
at Loy	11/17	*	35	5-9	2-4	2-2	5	3	1	0	0	14
at DC	11/24	*	36	6-12	1-3	5-5	10	7	9	2	3	18
ECU	11/27	*	37	4-11	0-3	1-2	11	5	6	1	1	9
at Hart	11/30	*	39	3-15	1-5	5-6	6	2	4	0	6	12
at Fair	12/2	*	37	8-12	2-4	4-8	5	2	7	0	3	22
UOFR	12/5	*	32	2-7	0-0	1-2	1	6	3	2	2	8
at ODU	12/8	*	24	7-15	0-3	3-3	3	2	2	0	3	17
at NSU	12/21	*	33	4-10	0-2	2-5	8	4	6	1	4	10
GW	12/28	*	34	10-16	3-5	3-3	10	3	3	3	2	26
at Hof	1/4	*	39	7-14	1-4	7-7	10	3	6	1	0	22
at NU	1/6	*	25	6-15	4-7	5-6	6	4	2	0	3	21
UNCW	1/11	*	36	8-16	2-5	7-9	6	2	2	2	2	25
COFC	1/13	*	39	6-16	4-8	2-8	8	4	5	0	2	18
ELON	1/20	*	27	4-8	1-2	4-6	3	3	1	0	0	13
at JMU	1/25	*	33	2-18	0-3	4-4	11	3	3	9	1	8
at Tow	1/27	*	33	7-17	3-6	5-11	7	3	4	0	3	22
DEL	2/1	*	37	2-9	1-2	6-8	8	5	6	1	1	11
DREXEL	2/3	*	39	6-10	1-2	4-5	9	3	3	1	1	17
at CofC	2/8	*	48	9-19	0-3	5-8	6	4	9	2	5	23
at UNCW	2/10	*	38	7-15	1-5	1-3	10	3	5	1	5	16
at Elon	2/17	*	39	5-11	1-6	2-2	9	4	5	2	2	13
TOW	2/22	*	33	5-12	1-2	7-9	3	8	4	3	1	18
JMU	2/24	*	34	3-8	2-5	8-8	6	7	3	0	2	16

>> BOGGS' CAREER STATISTICS

Season	GP	GS	Min/Avg	FG-FGA	Pct	3pt-Att	Pct	FT-FTA	Pct	Off	Def	Reb	Avg	PF	FO	A	TO	Blk	S	TP	Avg
2015-16	30	24	802/26.7	68-233	.292	17-56	.304	70-102	.686	38	57	95	3.2	81	5	45	55	10	56	223	7.4
2016-17	31	26	734/23.7	82-214	.383	22-74	.297	60-76	.789	44	65	109	3.5	60	0	60	76	17	54	246	7.9
2017-18	30	30	907/30.2	156-373	.418	41-129	.318	103-139	.741	46	91	137	4.6	85	1	88	111	24	65	456	15.2
2018-19	25	25	879/35.2	142-336	.423	34-102	.333	102-140	.729	34	142	176	7.0	58	3	101	105	21	60	420	16.8
CAREER	116	105	3322/28.6	448-1156	.388	114-361	.316	335-457	.733	162	355	517	4.5	284	9	294	347	72	235	1345	11.6



#3 ASHLEY TAYLOR

JUNIOR - GUARD

CHARLOTTESVILLE, VA. - ST. ANNE'S-BELFIELD

>> TAYLOR'S CAREER HIGHS

MINUTES			FREE THROWS		
Season	6	vs. GW, 12/28/18	Season	1	vs. GW, 12/28/18
Career	9	vs. USC Upstate, 12/5/17	Career	1	vs. GW, 12/28/18
POINTS			ASSISTS		
Season	1	vs. GW, 12/28/18	Season	-	-
Career	3	vs. USC Upstate, 12/5/17	Career	1	(4x) last time at CofC, 12/29/17
REBOUNDS			STEALS		
Season	-	-	Season	-	-
Career	2	vs. Loyola, 11/25/17	Career	1	vs. Davidson, 11/27/17
FIELD GOALS			BLOCKS		
Season	-	-	Season	-	-
Career	1	(2x) last time at Elon, 3/1/18	Career	-	-
3-POINT FIELD GOALS			MISCELLANEOUS		
Season	-	-	Career in Double Figures	0	
Career	1	vs. USC Upstate, 12/5/17	2018-19 in Double Figures	0	

>> TAYLOR'S CAREER STATISTICS

Season	GP	GS	Min/Avg	FG-FGA	Pct	3pt-Att	Pct	FT-FTA	Pct	Off	Def	Reb	Avg	PF	FO	A	TO	Blk	S	TP	Avg
2016-17	7	0	22/3.1	0-6	.000	0-4	.000	0-0	.000	1	2	3	0.4	0	0	2	1	0	0	0	0.0
2017-18	13	0	32/2.5	2-9	.222	1-3	.333	0-0	.000	0	7	7	0.5	1	0	2	4	0	1	5	0.4
2018-19	4	0	11/2.8	0-4	.000	0-3	.000	1-2	.500	0	0	0	0.0	0	0	0	0	0	0	1	0.3
CAREER	25	0	65/2.7	2-20	.105	1-10	.100	1-2	.500	1	9	10	0.4	1	0	4	5	0	1	6	0.3

>> 2018-19 GAME-BY-GAME

Opp	Date	GS	Min	FG-A	3FG-A	FT-A	Reb.	A	TO	BLK	STL	Pts
VCU	11/6											
HOW	11/12											
at Loy	11/17	1	0-0	0-0	0-0	0	0	0	0	0	0	0
at DC	11/24											
ECU	11/27											
at Hart	11/30											
at Fair	12/2											
UOFR	12/5											
at ODU	12/8	1	0-1	0-1	0-0	0	0	0	0	0	0	0
at NSU	12/21											
GW	12/28	6	0-3	0-2	1-2	0	0	0	0	0	1	
at Hof	1/4											
at NU	1/6											
UNCW	1/11											
COFC	1/13											
ELON	1/20											
at JMU	1/25	3	0-0	0-0	0-0	0	0	0	0	0	0	0
at Tow	1/27											
DEL	2/1											
DREXEL	2/3											
at CofC	2/8											
at UNCW	2/10											
at Elon	2/17											
TOW	2/22											
JMU	2/24											



#5 MISHA JONES

SENIOR - GUARD/FORWARD

MANASSAS PARK, VA. - BATTLEFIELD

>> JONES' CAREER HIGHS

MINUTES			FREE THROWS		
Season	25	at Towson, 1/27/19	Season	6	at Towson, 1/27/19
Career	27	vs. Delaware, 2/23/18	Career	6	at Towson, 1/27/19
POINTS			ASSISTS		
Season	9	(2x) last vs. UNCW, 1/11/19	Season	4	at Old Dominion, 12/8/18
Career	9	(2x) last vs. UNCW, 1/11/19	Career	4	(3x) last time at ODU, 12/8/18
REBOUNDS			STEALS		
Season	8	at Towson, 1/27/19	Season	2	at Hofstra, 1/4/19
Career	8	at Towson, 1/27/19	Career	2	(2x) last time at Hofstra, 1/4/19
FIELD GOALS			BLOCKS		
Season	3	(2x) last vs. UNCW, 1/11/19	Season	1	(5x) last time at CofC, 2/8/19
Career	3	(2x) last vs. UNCW, 1/11/19	Career	1	(6x) last time at CofC, 2/8/19
3-POINT FIELD GOALS			MISCELLANEOUS		
Season	3	vs. UNCW, 1/11/19	Career in Double Figures	0	
Career	3	vs. UNCW, 1/11/19	2018-19 in Double Figures	0	

>> 2018-19 GAME-BY-GAME

Opp	Date	GS	Min	FG-A	3FG-A	FT-A	Reb.	A	TO	BLK	STL	Pts
VCU	11/6	4	1-1	1-1	1-2	4	0	0	0	0	4	
HOW	11/12	14	3-5	2-4	1-1	3	2	2	1	0	9	
at Loy	11/17	13	2-4	0-2	1-2	2	1	0	0	0	5	
at DC	11/24	11	1-2	1-2	0-0	1	3	1	1	0	3	
ECU	11/27	9	0-3	0-3	0-0	2	0	0	0	0	0	
at Hart	11/30	12	1-2	1-1	0-0	4	1	0	0	0	3	
at Fair	12/2	8	0-1	0-1	0-0	1	0	0	0	0	0	
UOFR	12/5	6	0-0	0-0	0-0	1	0	1	0	0	0	
at ODU	12/8	13	2-5	0-1	0-0	4	4	1	0	0	4	
at NSU	12/21	8	0-1	0-1	0-0	0	0	1	0	1	0	
GW	12/28	12	1-2	0-0	2-2	1	0	1	0	0	4	
at Hof	1/4	6	1-1	1-1	0-0	1	1	0	0	0	3	
at NU	1/6	20	2-6	1-3	1-2	3	2	0	0	1	6	
UNCW	1/11	24	3-5	3-5	0-0	2	3	3	1	0	9	
COFC	1/13	19	2-5	2-4	0-0	2	2	1	0	0	6	
ELON	1/20	15	2-3	2-2	2-2	2	2	0	2	0	8	
at JMU	1/25	22	2-3	2-3	0-0	3	0	0	0	0	6	
at Tow	1/27	22	1-5	0-4	6-6	8	2	2	0	0	8	
DEL	2/1	20	1-2	1-2	0-0	2	0	3	0	0	3	
DREXEL	2/3	10	0-0	0-0	0-0	1	2	0	1	0	0	
at CofC	2/8	15	1-4	0-3	0-0	1	1	1	1	0	2	
at UNCW	2/10	5	0-1	0-1	0-0	0	0	0	0	0	0	
at Elon	2/17	4	0-0	0-0	0-0	1	0	0	0	0	0	
TOW	2/22	4	0-0	0-0	0-0	0	0	0	0	0	0	
JMU	2/24	16	1-5	0-4	2-2	1	0	2	0	0	4	

>> JONES' CAREER STATISTICS

Season	GP	GS	Min/Avg	FG-FGA	Pct	3pt-Att	Pct	FT-FTA	Pct	Off	Def	Reb	Avg	PF	FO	A	TO	Blk	S	TP	Avg
2015-16	27	0	180/6.7	12-36	.333	5-20	.250	7-10	.700	1	16	17	0.6	15	0	8	9	0	4	36	1.3
2016-17																					
2017-18	28	0	201/7.2	13-41	.317	7-26	.269	10-11	.909	6	26	32	1.1	29	0	15	17	1	7	43	1.5
2018-19	25	3	313/21.5	27-66	.409	17-48	.354	16-18	.889	13	33	46	1.8	45	-	26	19	5	3	87	3.5
CAREER	80	3	694/8.7	52-143	.364	29-94	.309	33-39	.846	20	75	95	1.2	89	0	49	45	6	14	166	2.1



#10 EVA HODGSON

FRESHMAN - GUARD

RINDGE, N.H. - NEW HAMPTON SCHOOL

>> HODGSON'S CAREER HIGHS

MINUTES

Season 46 at Charleston, 2/8/19
Career 46 at Charleston, 2/8/19

POINTS

Season 24 at UNCW, 2/10/19
Career 24 at UNCW, 2/10/19

REBOUNDS

Season 6 (2x) last time vs. Drexel, 2/3/19
Career 6 (2x) last time vs. Drexel, 2/3/19

FIELD GOALS

Season 9 at UNCW, 2/10/19
Career 9 at UNCW, 2/10/19

3-POINT FIELD GOALS

Season 4 at UNCW, 2/10/19
Career 4 at UNCW, 2/10/19

FREE THROWS

Season 8 (2x) last time vs. Drexel, 2/3/19
Career 8 (2x) last time vs. Drexel, 2/3/19

ASSISTS

Season 6 (3x) last time vs. Elon, 1/20/19
Career 6 (3x) last time vs. Elon, 1/20/19

STEALS

Season 4 at Fairfield, 12/2/18
Career 4 at Fairfield, 12/2/18

BLOCKS

Season 3 vs. Drexel, 2/3/19
Career 3 vs. Drexel, 2/3/19

MISCELLANEOUS

Career in Double Figures 13
2018-19 in Double Figures 13

> 2018-19 GAME-BY-GAME

Opp	Date	GS	Min	FG-A	3FG-A	FT-A	Reb.	A	TO	BLK	STL	Pts
VCU	11/6	*	28	4-8	0-2	0-0	0	3	2	0	2	8
HOW	11/12	*	35	2-6	1-3	1-2	5	4	4	0	2	6
at Loy	11/17	*	30	2-7	0-1	1-1	2	5	2	1	1	5
at DC	11/24	*	30	0-4	0-1	0-0	3	2	4	0	0	0
ECU	11/27	*	26	4-4	2-2	3-4	1	0	2	1	0	13
at Hart	11/30	*	34	4-12	1-5	5-7	2	2	4	0	3	14
at Fair	12/2	*	32	0-4	0-2	3-4	5	4	4	0	4	3
UOFR	12/5	*	32	5-11	1-4	4-4	4	6	3	1	2	15
at ODU	12/8	*	22	2-5	0-2	0-2	1	3	1	0	0	4
at NSU	12/21	*	14	2-3	1-1	0-0	1	2	2	0	0	5
GW	12/28	*	32	4-7	2-3	1-1	4	6	2	1	0	11
at Hof	1/4	*	39	6-14	1-3	5-6	1	2	3	1	2	18
at NU	1/6	*	34	4-4	3-3	5-6	4	2	2	0	2	16
UNCW	1/11	*	27	2-6	2-5	0-0	0	1	2	1	2	6
COFC	1/13	*	17	1-4	0-1	0-0	1	1	5	1	0	2
ELON	1/20	*	37	2-7	0-2	0-0	4	6	2	0	2	4
at JMU	1/25	*	27	2-6	1-4	8-8	4	1	4	0	1	13
at Tow	1/27	*	39	4-10	0-1	5-6	6	5	1	1	0	13
DEL	2/1	*	38	3-7	1-1	4-4	1	4	1	0	2	11
DREXEL	2/3	*	40	2-5	0-1	8-8	6	4	2	3	3	12
at CofC	2/8	*	46	5-9	2-2	1-2	2	2	2	0	3	13
at UNCW	2/10*	*	38	7-15	1-5	2-2	5	2	6	0	0	24
at Elon	2/17	*	37	5-9	2-6	2-2	3	1	3	0	2	14
TOW	2/22	*	36	2-7	2-6	0-0	5	3	3	0	1	6
JMU	2/24	*	37	0-5	0-3	0-0	2	5	0	0	3	0

>> HODGSON'S CAREER STATISTICS

Season	GP	GS	Min/Avg	FG-FGA	Pct	3pt-Att	Pct	FT-FTA	Pct	Off	Def	Reb	Avg	PF	FO	A	TO	Blk	S	TP	Avg
2018-19	25	25	805/32.2	76-179	.425	26-70	.371	58-70	.829	25	46	71	2.8	66	1	76	65	11	36	236	9.4
CAREER	25	25	805/32.2	76-179	.425	26-70	.371	58-70	.829	25	46	71	2.8	66	1	76	65	11	36	236	9.4



#11 NYLA POLLARD

SOPHOMORE - GUARD

VIRGINIA BEACH, VA. - PRINCESS ANNE

>> POLLARD'S CAREER HIGHS

MINUTES

Season 38 at Hofstra, 1/4/19
Career 38 at Hofstra, 1/4/19

POINTS

Season 10 vs. East Carolina, 11/27/18
Career 14 vs. USC Upstate, 12/5/17

REBOUNDS

Season 12 vs. East Carolina, 11/27/18
Career 12 vs. East Carolina, 11/27/18

FIELD GOALS

Season 4 (2x) last time vs. CofC, 1/19/13
Career 6 vs. USC Upstate, 12/5/17

3-POINT FIELD GOALS

Season 3 vs. James Madison, 2/24/19
Career 3 vs. James Madison, 2/24/19

FREE THROWS

Season 6 vs. East Carolina, 11/27/18
Career 6 vs. East Carolina, 11/27/18

ASSISTS

Season 6 vs. UNCW, 1/11/19
Career 6 vs. UNCW, 1/11/19

STEALS

Season 3 (2x) last time vs. CofC, 2/8/19
Career 4 vs. Davidson, 11/27/17

BLOCKS

Season 1 (3x) last time vs. Elon, 1/20/19
Career 1 (7x) last time vs. Elon, 1/20/19

MISCELLANEOUS

Career in Double Figures 4
2018-19 in Double Figures 1

>> 2018-19 GAME-BY-GAME

Opp	Date	GS	Min	FG-A	3FG-A	FT-A	Reb.	A	TO	BLK	STL	Pts
VCU	11/6		19	2-4	1-1	0-1	1	0	0	0	1	5
HOW	11/12		34	3-7	2-3	0-0	3	2	2	0	2	8
at Loy	11/17		23	4-6	1-2	0-0	2	4	1	0	1	9
at DC	11/24		25	1-4	0-2	0-1	1	1	2	0	0	2
ECU	11/27	*	35	2-9	0-3	6-8	12	2	4	1	0	10
at Hart	11/30	*	25	0-6	0-3	0-0	3	2	2	0	0	0
at Fair	12/2	*	27	0-3	0-0	2-4	3	3	3	0	2	2
UOFR	12/5	*	35	2-5	1-4	0-0	2	2	3	0	3	5
at ODU	12/8	*	20	0-2	0-1	2-2	0	4	2	0	2	2
at NSU	12/21	*	37	2-6	0-2	2-2	2	4	0	0	1	6
GW	12/28	*	33	1-7	0-2	0-0	1	3	2	0	1	2
at Hof	1/4	*	38	1-4	1-1	1-2	7	3	1	0	2	4
at NU	1/6	*	13	0-2	0-1	0-0	0	0	0	0	0	0
UNCW	1/11	*	36	2-4	2-3	3-4	7	6	3	0	0	9
COFC	1/13	*	37	4-9	0-3	1-2	2	4	0	1	1	9
ELON	1/20	*	33	1-6	0-3	0-0	1	2	3	1	0	2
at JMU	1/25	*	25	0-3	0-1	2-2	1	1	2	0	0	2
at Tow	1/27	*	34	2-3	1-1	3-4	2	4	2	0	1	8
DEL	2/1	*	22	1-6	1-2	0-0	1	4	1	0	2	3
DREXEL	2/3	*	21	2-6	0-2	1-2	4	1	2	0	0	5
at CofC	2/8	*	31	0-3	0-3	0-0	4	3	4	0	3	0
at UNCW	2/10*	*	16	0-3	0-1	0-0	2	2	1	0	0	0
at Elon	2/17	*	28	1-6	1-4	1-2	3	1	2	0	1	4
TOW	2/22	*	28	2-2	0-0	2-2	4	4	0	0	2	6
JMU	2/24	*	24	3-4	3-4	0-0	2	1	4	0	1	9

>> POLLARD'S CAREER STATISTICS

Season	GP	GS	Min/Avg	FG-FGA	Pct	3pt-Att	Pct	FT-FTA	Pct	Off	Def	Reb	Avg	PF	FO	A	TO	Blk	S	TP	Avg
2017-18	30	27	658/21.9	44-121	.364	14-48	.292	20-27	.741	22	31	53	1.8	71	3	46	40	4	15	122	4.1
2018-19	25	21	700/28.0	36-120	.300	14-52	.269	26-38	.684	26	44	70	2.8	55	3	64	46	3	26	112	4.5
CAREER	55	48	1358/24.7	80-241	.332	28-100	.280	46-65	.708	48	75	123	2.2	126	6	110	86	7	41	234	4.3



#12 HARPER BIRDSONG

SOPHOMORE - GUARD

SUFFOLK, VA. - NANSEMOND SUFFOLK (George Washington)

>> BIRDSONG'S CAREER HIGHS

MINUTES

Season	30	at Old Dominion, 12/8/18
Career	30	at Old Dominion, 12/8/18

POINTS

Season	18	at Old Dominion, 12/8/18
Career	18	at Old Dominion, 12/8/18

REBOUNDS

Season	5	(3x) last time vs. CofC, 1/13/19
Career	5	(3x) last time vs. CofC, 1/13/19

FIELD GOALS

Season	6	(3x) last time at NU, 1/6/19
Career	6	(3x) last time at NU, 1/6/19

3-POINT FIELD GOALS

Season	4	vs. GW, 12/28/18
Career	4	vs. GW, 12/28/18

FREE THROWS

Season	4	(2x) last vs. UNCW, 1/11/19
Career	4	(2x) last vs. UNCW, 1/11/19

ASSISTS

Season	4	(2x) last time at UNCW, 2/10/19
Career	4	(2x) last time at UNCW, 2/10/19

STEALS

Season	3	vs. GW, 12/28/18
Career	3	vs. GW, 12/28/18

BLOCKS

Season	2	vs. UNCW, 1/11/19
Career	2	vs. UNCW, 1/11/19

MISCELLANEOUS

Career in Double Figures	14
2018-19 in Double Figures	14

>> 2018-19 GAME-BY-GAME

Opp	Date	GS	Min	FG-A	3FG-A	FT-A	Reb.	A	TO	BLK	STLPTS
VCU	11/6	*	12	0-4	0-2	0-0	0	0	4	0	0
HOW	11/12	*	16	5-10	1-4	1-2	2	1	1	1	12
at Loy	11/17	*	14	3-3	3-3	0-2	0	0	2	0	9
at DC	11/24	*	20	4-10	2-6	0-0	0	2	1	0	10
ECU	11/27		19	3-9	1-3	3-3	1	1	3	1	10
at Hart	11/30		19	2-5	2-5	2-5	1	1	2	0	8
at Fair	12/2		25	3-8	3-5	2-2	0	0	1	0	11
UOFR	12/5		18	5-7	3-5	0-0	2	2	1	0	13
at ODU	12/8		30	6-18	2-8	4-4	2	4	3	0	18
at NSU	12/21		28	5-11	3-7	1-1	5	1	4	0	14
GW	12/28		23	6-10	4-6	0-0	2	2	1	0	3
at Hof	1/4		23	2-7	2-5	3-4	1	0	22	0	9
at NU	1/6		29	6-15	2-7	2-4	5	2	1	0	16
UNCW	1/11		21	0-10	0-5	4-4	2	1	0	2	4
COFC	1/13		23	3-11	2-5	0-0	4	0	2	0	8
ELON	1/20		17	5-11	3-6	0-0	3	2	3	1	0
at JMU	1/25		14	5-9	2-5	0-0	0	0	1	0	12
at Tow	1/27		3	0-1	0-1	0-0	0	0	1	0	0
DEL	2/1		23	5-11	0-4	2-2	1	1	1	0	12
DREXEL	2/3		27	5-8	3-6	2-2	3	0	1	1	15
at CofC	2/8		24	3-9	2-4	0-0	3	0	1	0	8
at UNCW	2/10		29	0-10	0-4	0-0	4	4	2	0	0
at Elon	2/17		17	4-7	3-4	2-2	1	2	0	0	2
TOW	2/22		14	2-7	1-5	2-3	1	0	1	0	1
JMU	2/24		17	3-8	3-5	2-4	2	1	2	0	11

>> BIRDSONG'S CAREER STATISTICS

Season	GP	GS	Min/Avg	FG-FGA	Pct	3pt-Att	Pct	FT-FTA	Pct	Off	Def	Reb	Avg	PF	FO	A	TO	Blk	S	TP	Avg
2016-17	8	0	39/4.9	4-13	.308	2-8	.250	1-1	1.000	0	2	2	0.3	2	0	2	1	0	1	11	1.4
2017-18																					
2018-19	25	4	508/20.3	85-220	.386	47-120	.392	32-44	.727	15	31	46	1.8	45	1	27	41	6	18	249	10.0
CAREER	33	4	547/16.6	89-223	.382	49-128	.383	33-45	.733	15	33	48	1.5	47	1	29	42	6	19	260	7.9

>> 2018-19 GAME-BY-GAME

Opp	Date	GS	Min	FG-A	3FG-A	FT-A	Reb.	A	TO	BLK	STLPTS
VCU	11/6		16	1-5	1-4	1-2	4	1	0	1	0
HOW	11/12		13	5-9	4-7	0-2	2	0	0	2	0
at Loy	11/17		18	2-2	1-1	0-0	5	3	1	0	2
at DC	11/24		16	3-5	3-4	0-0	3	0	0	0	9
ECU	11/27		15	2-6	2-4	0-0	4	2	0	0	6
at Hart	11/30		22	0-6	0-4	2-2	1	0	1	1	2
at Fair	12/2		11	0-3	0-2	2-2	4	0	1	0	2
UOFR	12/5		8	1-2	1-2	0-0	1	0	1	0	3
at ODU	12/8		21	1-5	0-3	0-0	5	1	0	1	2
at NSU	12/21		21	3-7	1-5	0-2	1	2	0	0	7
GW	12/28		14	1-5	1-4	0-0	2	0	0	2	0
at Hof	1/4		13	0-0	0-0	0-0	1	1	0	0	0
at NU	1/6		18	1-5	0-4	1-1	1	1	2	0	3
UNCW	1/11	*	12	0-4	0-4	0-0	0	0	0	0	0
COFC	1/13	*	7	0-1	0-0	0-0	0	0	0	1	0
ELON	1/20		10	3-6	3-5	0-0	0	0	0	1	0
at JMU	1/25		13	0-2	0-2	0-0	3	0	0	0	1
at Tow	1/27		22	5-8	3-5	0-0	4	0	1	0	13
DEL	2/1		9	1-2	1-2	0-0	2	0	1	1	0
DREXEL	2/3		15	1-6	1-6	0-0	3	0	1	2	0
at CofC	2/8	*	6	0-0	0-0	0-0	0	0	2	0	0
at UNCW	2/10		14	2-5	2-5	0-0	3	0	0	0	6
at Elon	2/17		19	2-4	2-4	0-0	1	1	1	0	6
TOW	2/22		11	2-5	1-3	1-1	1	0	0	0	6
JMU	2/24		9	1-1	0-0	0-0	2	1	4	0	1



#15 EMMA KRAUSE

FRESHMAN - FORWARD

PLANTATION, FLA. - CARDINAL GIBBONS

>> KRAUSE'S CAREER HIGHS

MINUTES

Season	22	(2x) last time at TU, 1/27/19
Career	22	(2x) last time at TU, 1/27/19

POINTS

Season	14	vs. Howard, 11/12/18
Career	14	vs. Howard, 11/12/18

REBOUNDS

Season	5	(2x) last time at ODU, 12/8/18
Career	5	(2x) last time at ODU, 12/8/18

FIELD GOALS

Season	5	(2x) last time at TU, 1/27/19
Career	5	(2x) last time at TU, 1/27/19

3-POINT FIELD GOALS

Season	4	vs. Howard, 11/12/18
Career	4	vs. Howard, 11/12/18

FREE THROWS

Season	2	at Fairfield, 12/2/18
Career	2	at Fairfield, 12/2/18

ASSISTS

Season	3	at Loyola, 11/14/18
Career	3	at Loyola, 11/14/18

STEALS

Season	2	at Loyola, 11/14/18
Career	2	at Loyola, 11/14/18

BLOCKS

Season	2	(3x) last time vs. Drexel, 2/3/19
Career	2	(3x) last time vs. Drexel, 2/3/19

MISCELLANEOUS

Career in Double Figures	2
2018-19 in Double Figures	2

>> KRAUSE'S CAREER STATISTICS

Season	GP	GS	Min/Avg	FG-FGA	Pct	3pt-Att	Pct	FT-FTA	Pct	Off	Def	Reb	Avg	PF	FO	A	TO	Blk	S	TP	Avg
2018-19	25	3	355/14.2	37-104	.356	27-80	.338	7-12	.583	13	37	50	2.0	43	1	14	12	12	6	108	4.3
CAREER	25	3	355/14.2	37-104	.356	27-80	.338	7-12	.583	13	37	50	2.0	43	1	14	12	12	6	108	4.3



#20 CHANDLER SMITH

SENIOR - CENTER

PORT TOBACCO, MD. - ST. MARY'S RYKEN

>> SMITH'S CAREER HIGHS

MINUTES

Season	20	at UNCW, 2/10/19
Career	20	at UNCW, 2/10/19

POINTS

Season	2	at UNCW, 2/10/19
Career	4	(4x) last time at SFU 12/2/17

REBOUNDS

Season	6	at UNCW, 2/10/19
Career	6	at UNCW, 2/10/19

FIELD GOALS

Season	1	at UNCW, 2/10/19
Career	2	(3x) last time at SFU, 12/2/17

3-POINT FIELD GOALS

Season	-	
Career	-	

FREE THROWS

Season	1	vs. Howard, 11/12/18
Career	4	vs. Hofstra, 2/7/17

ASSISTS

Season	1	vs. Richmond, 12/5/18
Career	1	(3x) last time vs. UofR, 12/5/18

STEALS

Season	1	at Elon, 2/19/19
Career	2	(2x) last time vs. Mount St. Mary's, 12/18/16

BLOCKS

Season	1	(3x) last time at JMU 1/25/19
Career	3	vs. Mount St. Mary's, 12/18/16

MISCELLANEOUS

Career in Double Figures	0
2017-18 in Double Figures	0

>> SMITH'S CAREER STATISTICS

Season	GP	GS	Min/Avg	FG-FGA	Pct	3pt-Att	Pct	FT-FTA	Pct	Off	Def	Reb	Avg	PF	FO	A	TO	Blk	S	TP	Avg
2015-16	19	0	97/5.1	3-12	.250	0-0	.000	0-6	.000	2	10	12	0.6	13	0	0	5	4	3	6	0.3
2016-17	13	0	77/5.9	6-21	.286	0-0	.000	7-8	.875	2	22	24	1.8	16	1	1	7	11	3	19	1.5
2017-18	21	0	86/4.1	5-17	.294	0-0	.000	0-0	.000	4	8	12	0.6	15	0	3	8	9	1	10	0.5
2018-19	12	1	61/5.1	1-3	.333	0-0	.000	1-4	.250	3	12	15	1.3	8	0	1	7	4	1	3	0.3
CAREER	65	1	321/4.9	15-53	.283	0-0	.000	8-18	.444	11	52	63	1.0	52	1	5	27	28	8	38	0.6



#21 BAILEY EICHNER

SOPHOMORE - GUARD/FORWARD

CUDAHY, WISC. - CUDAHY

>> EICHNER'S CAREER HIGHS

MINUTES

Season	15	vs. James Madison, 2/24/19
Career	15	vs. James Madison, 2/24/19

POINTS

Season	5	vs. James Madison, 2/24/19
Career	5	vs. James Madison, 2/24/19

REBOUNDS

Season	6	at Old Dominion, 12/8/18
Career	6	at Old Dominion, 12/8/18

FIELD GOALS

Season	2	vs. James Madison, 2/24/19
Career	2	vs. James Madison, 2/24/19

3-POINT FIELD GOALS

Season	1	vs. James Madison, 2/24/19
Career	1	vs. James Madison, 2/24/19

FREE THROWS

Season	1	vs. VCU, 11/6/18
Career	2	vs. James Madison, 2/2/18

ASSISTS

Season	2	vs. James Madison, 2/24/19
Career	2	(2x) last time vs. JMU, 2/24/19

STEALS

Season	2	at Old Dominion, 12/8/18
Career	2	at Old Dominion, 12/8/18

BLOCKS

Season	1	vs. GW, 12/28/18
Career	1	(2x) last time vs. GW, 12/28/18

MISCELLANEOUS

Career in Double Figures	0
2017-18 in Double Figures	0

>> EICHNER'S CAREER STATISTICS

Season	GP	GS	Min/Avg	FG-FGA	Pct	3pt-Att	Pct	FT-FTA	Pct	Off	Def	Reb	Avg	PF	FO	A	TO	Blk	S	TP	Avg
2017-18	16	0	46/2.9	2-6	.333	0-2	.000	4-8	.500	6	9	15	0.9	14	0	2	7	2	1	8	0.5
2018-19	15	0	93/6.2	3-12	.250	1-4	.250	1-2	.500	5	12	17	1.1	11	0	5	5	1	3	8	0.5
CAREER	31	0	139/4.5	5-18	.278	1-6	.167	5-10	.500	11	21	32	1.0	25	0	7	12	3	4	16	0.5

>> 2018-19 GAME-BY-GAME

Opp	Date	GS	Min	FG-A	3FG-A	FT-A	Reb.	A	TO	BLK	STLPTS
VCU	11/6	8	0-0	0-0	0-0	2	0	0	0	0	0
HOW	11/12	4	0-0	0-0	1-2	2	0	1	1	0	1
at Loy	11/17	4	0-1	0-0	0-0	0	0	0	1	0	0
at DC	11/24										
ECU	11/27	8	0-0	0-0	0-0	3	0	2	0	0	0
at Hart	11/30										
at Fair	12/2										
UOFR	12/5	5	0-0	0-0	0-0	1	1	0	0	0	0
at ODU	12/8										
at NSU	12/21	2	0-0	0-0	0-0	0	0	0	0	0	0
GW	12/28	1	0-0	0-0	0-0	0	0	1	0	0	0
at Hof	1/4										
at NU	1/6										
UNCW	1/11										
COFC	1/13										
ELON	1/20										
at JMU	1/25	2	0-0	0-0	0-0	0	0	0	1	0	0
at Tow	1/27	1	0-0	0-0	0-0	0	0	1	0	0	0
DEL	2/1										
DREXEL	2/3										
at CofC	2/8	1	0-0	0-0	0-0	1	0	1	0	0	0
at UNCW	2/10*	20	1-2	0-0	0-2	6	0	0	0	0	2
at Elon	2/17	6	0-0	0-0	0-0	0	0	1	0	1	0
TOW	2/22										
JMU	2/24										

>> 2018-19 GAME-BY-GAME

Opp	Date	GS	Min	FG-A	3FG-A	FT-A	Reb.	A	TO	BLK	STLPTS
VCU	11/6	11	0-2	0-1	1-2	1	0	1	0	0	1
HOW	11/12	1	0-0	0-0	0-0	0	0	1	0	0	0
at Loy	11/17	1	0-0	0-0	0-0	0	0	0	0	0	0
at DC	11/24										
ECU	11/26										
at Hart	11/30										
at Fair	12/2										
UOFR	12/5										
at ODU	12/8	11	1-2	0-0	0-0	6	0	0	0	0	2
at NSU	12/21	7	0-2	0-1	0-0	2	0	0	0	1	0
GW	12/28	13	0-1	0-1	0-0	2	1	0	1	0	0
at Hof	1/4	8	0-0	0-0	0-0	1	1	0	0	0	0
at NU	1/6	6	0-1	0-0	0-0	1	0	0	0	0	0
UNCW	1/11	3	0-0	0-0	0-0	0	0	0	0	0	0
COFC	1/13										
ELON	1/20	1	0-0	0-0	0-0	0	0	1	0	0	0
at JMU	1/25	9	0-1	0-0	0-0	2	0	0	0	0	0
at Tow	1/27	2	0-0	0-0	0-0	0	0	0	1	0	0
DEL	2/1										
DREXEL	2/3										
at CofC	2/8										
at UNCW	2/10										
at Elon	2/17	3	0-0	0-0	0-0	0	0	1	0	0	0
TOW	2/22	3	0-0	0-0	0-0	0	1	0	0	0	0
JMU	2/24	15	2-3	1-1	0-0	2	2	0	0	0	5



#25 GABBY ROGERS

SOPHOMORE - CENTER

DALLAS, TEXAS - BISHOP LYNCH

>> ROGERS' CAREER HIGHS

MINUTES

Season 31 (2x) last time vs. Tow., 2/22/19
Career 31 (2x) last time vs. Tow., 2/22/19

POINTS

Season 17 vs. Towson, 2/22/19
Career 17 vs. Towson, 2/22/19

REBOUNDS

Season 12 at Charleston, 2/8/19
Career 12 at Charleston, 2/8/19

FIELD GOALS

Season 8 vs. Towson, 2/22/19
Career 8 vs. Towson, 2/22/19

3-POINT FIELD GOALS

Season -
Career -

FREE THROWS

Season 6 at Charleston, 2/8/19
Career 6 at Charleston, 2/8/19

ASSISTS

Season 1 (6x) last time vs. Tow., 2/22/19
Career 1 (12x) last time vs. Tow., 2/22/19

STEALS

Season 3 (2x) last time at Hofstra, 1/4/19
Career 3 (3x) last time at Hofstra, 1/4/19

BLOCKS

Season 2 vs. Elon, 1/20/19
Career 2 (3x) last time vs. Elon, 1/20/19

MISCELLANEOUS

Career in Double Figures 3
2018-19 in Double Figures 3

>> 2018-19 GAME-BY-GAME

Opp	Date	GS	Min	FG-A	3FG-A	FT-A	Reb.	A	TO	BLK	STL	Pts
VCU	11/6	*	18	1-2	0-0	2-2	1	0	2	0	0	4
HOW	11/12	*	19	1-2	0-0	0-0	3	0	2	1	0	2
at Loy	11/17	*	16	4-6	0-0	0-0	2	1	0	0	0	8
at DC	11/24	*	27	4-8	0-1	2-2	2	0	1	0	1	10
ECU	11/27	*	15	0-1	0-0	0-0	2	0	3	0	1	0
at Hart	11/30	*	18	1-2	0-0	0-0	1	0	0	1	3	2
at Fair	12/2	*	30	4-7	0-0	0-0	5	1	0	0	1	8
UOFR	12/5	*	29	2-7	0-0	1-2	5	0	1	0	0	5
at ODU	12/8	*	11	3-5	0-0	0-0	2	0	0	0	0	6
at NSU	12/21	*	10	1-3	0-0	0-0	3	0	0	0	0	2
GW	12/28	*	12	1-2	0-0	0-0	3	0	0	0	1	2
at Hof	1/4	*	21	2-3	0-0	0-0	2	1	0	0	3	4
at NU	1/6	*	17	0-2	0-0	2-2	1	1	1	0	0	2
UNCW	1/11	*	11	0-1	0-0	0-0	3	0	2	1	1	0
COFC	1/13	*	21	1-5	0-0	1-2	5	1	1	1	2	3
ELON	1/20	*	23	2-3	0-0	1-1	4	0	1	0	2	5
at JMU	1/25	*	15	1-1	0-0	0-0	1	0	1	0	0	2
at Tow	1/27	*	15	2-5	0-0	0-0	2	0	2	0	0	4
DEL	2/1	*	12	1-5	0-0	0-0	2	0	0	0	1	2
DREXEL	2/3	*	6	0-1	0-0	0-0	0	0	1	0	0	0
at CofC	2/8	*	31	4-9	0-0	6-6	12	0	0	1	0	14
at UNCW	2/10	*										
DNP - SUSPENSION												
at Elon	2/17	*	11	1-1	0-0	0-0	1	0	2	1	1	2
TOW	2/22	*	31	8-9	0-0	1-1	5	1	2	0	0	17
JMU	2/24	*	16	1-7	0-0	0-0	1	0	1	0	0	2

>> ROGERS' CAREER STATISTICS

Season	GP	GS	Min/Avg	FG-FGA	Pct	3pt-Att	Pct	FT-FTA	Pct	Off	Def	Reb	Avg	PF	FO	A	TO	Blk	S	TP	Avg
2017-18	29	0	263/9.1	24-47	.511	0-0	.000	9-13	.692	12	40	52	1.8	55	1	7	15	6	10	57	2.0
2018-19	24	21	440/18.3	45-97	.464	0-1	.000	16-18	.889	24	44	68	2.8	77	0	6	23	8	15	106	4.4
CAREER	53	21	703/13.3	69-144	.479	0-1	.000	25-31	.806	36	84	120	2.3	132	1	13	38	14	25	163	3.1



#30 VICTORIA REYNOLDS

JUNIOR - FORWARD

FAIRFAX, VA./ARCHBISHOP SPALDING

>> REYNOLDS' CAREER HIGHS

MINUTES

Season 48 at Charleston, 2/8/19
Career 48 at Charleston, 2/8/19

POINTS

Season 17 (2x) last time at CofC, 2/8/19
Career 22 at St. Francis (Pa.), 12/2/17

REBOUNDS

Season 15 vs. East Carolina, 11/27/18
Career 18 vs. Charleston, 1/26/18

FIELD GOALS

Season 7 vs. James Madison, 2/24/19
Career 9 vs. Northeastern, 2/11/18

3-POINT FIELD GOALS

Season 4 vs. Towson, 2/22/19
Career 4 vs. Towson, 2/22/19

FREE THROWS

Season 7 at Charleston, 2/8/19
Career 9 vs. Old Dominion, 12/17/17

ASSISTS

Season 7 vs. Charleston, 1/13/19
Career 8 at East Carolina, 11/21/17

STEALS

Season 4 vs. Charleston, 1/13/19
Career 7 vs. Hofstra, 1/28/18

BLOCKS

Season 3 at Norfolk State, 12/21/18
Career 3 (3x) last time vs. NSU, 12/21/18

MISCELLANEOUS

Career in Double Figures 36
2018-19 in Double Figures 17

>> 2018-19 GAME-BY-GAME

Opp	Date	GS	Min	FG-A	3FG-A	FT-A	Reb.	A	TO	BLK	STL	Pts
VCU	11/6	*	37	4-7	0-0	0-0	4	5	2	0	0	8
HOW	11/12	*	26	3-10	0-2	4-6	5	3	1	0	2	10
at Loy	11/17	*	33	4-10	0-0	2-2	5	2	7	0	0	10
at DC	11/24	*	29	6-8	0-0	1-1	3	2	2	0	1	13
ECU	11/27	*	35	4-6	1-1	6-6	15	4	6	2	1	15
at Hart	11/30	*	29	1-6	0-0	2-2	7	1	5	0	3	4
at Fair	12/2	*	30	4-8	0-0	4-6	4	1	3	0	3	12
UOFR	12/5	*	35	5-8	2-2	2-2	6	0	5	0	1	14
at ODU	12/8	*	37	4-10	1-4	4-4	6	2	5	2	1	13
at NSU	12/21	*	35	2-5	1-2	6-8	9	2	2	3	1	11
GW	12/28	*	15	3-7	2-2	0-0	5	2	0	0	0	8
at Hof	1/4	*	13	0-1	0-0	0-0	1	0	4	0	0	0
at NU	1/6	*	30	4-10	1-3	0-0	3	2	5	0	2	9
UNCW	1/11	*	31	6-9	1-2	4-5	7	0	4	2	1	17
COFC	1/13	*	36	3-8	2-2	0-0	10	7	4	1	4	8
ELON	1/20	*	37	3-6	0-1	5-8	6	3	0	2	1	11
at JMU	1/25	*	34	1-4	1-2	2-2	0	0	2	0	1	5
at Tow	1/27	*	26	6-11	0-1	0-0	3	0	2	0	1	12
DEL	2/1	*	39	6-11	0-2	1-2	6	3	2	2	3	14
DREXEL	2/3	*	39	3-13	0-4	0-0	9	2	4	1	1	6
at CofC	2/8	*	48	5-15	0-2	7-8	5	3	1	1	0	17
at UNCW	2/10	*	40	4-11	0-2	2-2	4	3	6	0	1	10
at Elon	2/17	*	36	3-7	1-1	5-7	5	1	3	1	2	12
TOW	2/22	*	39	5-10	4-6	1-2	0	3	5	0	1	15
JMU	2/24	*	32	7-12	0-3	2-2	3	1	1	0	1	16

>> REYNOLDS' CAREER STATISTICS

Season	GP	GS	Min/Avg	FG-FGA	Pct	3pt-Att	Pct	FT-FTA	Pct	Off	Def	Reb	Avg	PF	FO	A	TO	Blk	S	TP	Avg
2016-17	28	0	466/16.6	51-104	.490	5-12	.417	36-46	.783	44	45	89	3.2	42	0	21	30	5	33	143	5.1
2017-18	30	30	977/32.6	125-270	.463	8-34	.235	50-68	.735	65	147	212	7.1	77	1	60	69	22	71	308	10.3
2018-19	25	22	819/32.8	96-213	.451	18-45	.400	60-75	.800	19	115	134	5.4	64	4	52	81	16	33	270	10.8
CAREER	83	52	2262/27.3	272-587	.463	31-91	.341	146-189	.772	128	307	435	5.2	183	5	133	180	43	137	721	8.7



#32 CAROLINE STOVER

FRESHMAN - CENTER

PLYMPTON, MASS. - CARDINAL SPELLMAN

>> STOVER'S CAREER STATISTICS

MINUTES

Season	1	at Loyola, 11/14/18
Career	1	at Loyola, 11/14/18

POINTS

Season	-
Career	-

REBOUNDS

Season	-
Career	-

FIELD GOALS

Season	-
Career	-

3-POINT FIELD GOALS

Season	-
Career	-

FREE THROWS

Season	-
Career	-

ASSISTS

Season	-
Career	-

STEALS

Season	-
Career	-

BLOCKS

Season	-
Career	-

MISCELLANEOUS

Career in Double Figures	0
2018-19 in Double Figures	0

>> 2018-19 GAME-BY-GAME

Opp	Date	GS	Min	FG-A	3FG-A	FT-A	Reb.	A	TO	BLK	STL	PTS
VCU	11/6			DNP	-	COACH'S DECISION						
HOW	11/12			DNP	-	COACH'S DECISION						
at Loy	11/17	1	0-2	0-0	0-0	0	0	0	0	0	0	0
at DC	11/24			DNP	-	COACH'S DECISION						
ECU	11/27			DNP	-	COACH'S DECISION						
at Hart	11/30			DNP	-	COACH'S DECISION						
at Fair	12/2			DNP	-	COACH'S DECISION						
UOFR	12/5			DNP	-	COACH'S DECISION						
at ODU	12/8			DNP	-	COACH'S DECISION						
at NSU	12/21			DNP	-	COACH'S DECISION						
GW	12/28	1	0-0	0-0	0-0	0	0	0	0	0	0	0
at Hof	1/4			DNP	-	COACH'S DECISION						
at NU	1/6			DNP	-	COACH'S DECISION						
UNCW1	1/11			DNP	-	COACH'S DECISION						
COFC	1/13			DNP	-	COACH'S DECISION						
ELON	1/20			DNP	-	COACH'S DECISION						
at JMU	1/25			DNP	-	COACH'S DECISION						
at Tow	1/27			DNP	-	COACH'S DECISION						
DEL	2/1			DNP	-	COACH'S DECISION						
DREXEL	2/3			DNP	-	COACH'S DECISION						
at CofC	2/8			DNP	-	COACH'S DECISION						
at UNCW	2/10			DNP	-	COACH'S DECISION						
at Elon	2/17			DNP	-	COACH'S DECISION						
TOW	2/22			DNP	-	COACH'S DECISION						
JMU	2/24			DNP	-	COACH'S DECISION						

>> STOVER'S CAREER STATISTICS

Season	GP	GS	Min/Avg	FG-FGA	Pct	3pt-Att	Pct	FT-FTA	Pct	Off	Def	Reb	Avg	PF	FO	A	TO	Blk	S	TP	Avg
2018-19	2	0	1/0.5	0-2	.000	0-0	.000	0-0	.000	0	0	0	0.0	0	0	0	0	0	0	0	0.0
CAREER	2	0	1/0.5	0-2	.000	0-0	.000	0-0	.000	0	0	0	0.0	0	0	0	0	0	0	0	0.0



2018-19 Tribe Women's Basketball



W&M Women's Basketball
William & Mary Season Schedule/Results & Leaders (as of Feb 27, 2019)
All games

RECORD:	OVERALL	HOME	AWAY	NEUTRAL
ALL GAMES	12-13	6-6	6-7	0-0
CONFERENCE	5-9	2-5	3-4	0-0
NON-CONFERENCE	7-4	4-1	3-3	0-0

Date	Opponent	Score	Att. High Points	High Rebounds
11/06/18	VCU	55-72 L	684 (15)Boggs, Bianca	(6)Boggs, Bianca
11/12/18	HOWARD	W 88-75	564 (26)Boggs, Bianca	(9)Boggs, Bianca
11/17/18	at Loyola	W 65-49	352 (14)Boggs, Bianca	(6)Reynolds, Victoria
11/24/18	at Davidson	65-76 L	412 (18)Boggs, Bianca	(10)Boggs, Bianca
11/27/18	EAST CAROLINA	W 63-43	574 (15)Reynolds, Victoria	(15)Reynolds, Victoria
11/30/18	at HARTFORD	45-50 L	649 (14)Hodgson, Eva	(7)Reynolds, Victoria
12/02/18	at Fairfield	W 60-54	627 (22)Boggs, Bianca	(5)Hodgson, Eva
				(5)Rogers, Gabby
				(5)Boggs, Bianca
12/05/18	RICHMOND	W 65-55	634 (15)Hodgson, Eva	(6)Reynolds, Victoria
12/8/18	at Old Dominion	69-83 L	1802 (18)Birdsong, Harper	(6)Reynolds, Victoria
				(6)Eichner, Bailey
12/21/18	at Norfolk State	W 55-44	246 (14)Birdsong, Harper	(9)Reynolds, Victoria
12/29/18	GEORGE WASHINGTON	W 73-59	611 (26)Boggs, Bianca	(10)Boggs, Bianca
1/4/19	*at Hofstra	W 60-55	323 (22)Boggs, Bianca	(10)Boggs, Bianca
01/06/19	*at Northeastern	74-88 L	540 (21)Boggs, Bianca	(6)Boggs, Bianca
01/11/19	*UNCW	W 70-64	657 (25)Boggs, Bianca	(7)Reynolds, Victoria
				(7)Pollard, Nyla
01/13/19	*COL. OF CHARLESTON	54-66 L	582 (18)Boggs, Bianca	(10)Reynolds, Victoria
01/20/19	*ELON	W 65-60	904 (13)Birdsong, Harper	(6)Reynolds, Victoria
				(13)Boggs, Bianca
1/25/19	*at James Madison	48-65 L	2234 (13)Hodgson, Eva	(11)Boggs, Bianca
1/27/19	*at Towson	W 80-69	609 (22)Boggs, Bianca	(8)Jones, Misha
02/01/19	*DELAWARE	59-70 L	634 (14)Reynolds, Victoria	(8)Boggs, Bianca
02/03/19	*DREXEL	58-62 L	962 (17)Boggs, Bianca	(9)Boggs, Bianca
				(9)Reynolds, Victoria
02/08/19	*at Charleston	77-79 Lo2	3031 (23)Boggs, Bianca	(12)Rogers, Gabby
02/10/19	*at UNCW	58-66 L	945 (24)Hodgson, Eva	(10)Boggs, Bianca
2/17/19	*at Elon	W 64-59	527 (14)Hodgson, Eva	(9)Boggs, Bianca
02/22/19	*TOWSON	75-82 L	727 (18)Boggs, Bianca	(5)Rogers, Gabby
02/24/19	*JAMES MADISON	65-78 L	744 (16)Reynolds, Victoria	(6)Boggs, Bianca
				(16)Boggs, Bianca

* - CAA game

Attendance Summary	Games	Attend	Avg/Game
Home	12	8277	690
Away	13	12297	946
Neutral	0	0	0
Total	25	20574	823



W&M Women's Basketball
William & Mary Combined Team Statistics (as of Feb 27, 2019)
All games

RECORD:	OVERALL	HOME	AWAY	NEUTRAL
ALL GAMES	12-13	6-6	6-7	0-0
CONFERENCE	5-9	2-5	3-4	0-0
NON-CONFERENCE	7-4	4-1	3-3	0-0

#	Player	gp-gs	min	avg	Total		3-Point		F-Throw		Rebounds				pf	dq	a	to	blk	stl	pts	avg
					fg-fga	fg%	3fg-fga	3fg%	ft-fa	ft%	off	def	tot	avg								
02	Boggs, Bianca	25-25	879	35.2	142-336	.423	34-102	.333	102-140	.729	34	142	176	7.0	58	3	101	105	21	60	420	16.8
30	Reynolds, Victoria	25-22	819	32.8	96-213	.451	18-45	.400	60-75	.800	19	115	134	5.4	64	4	52	81	16	33	270	10.8
12	Birdsong, Harper	25-4	508	20.3	85-220	.386	47-120	.392	32-44	.727	15	31	46	1.8	45	1	27	41	6	18	249	10.0
10	Hodgson, Eva	25-25	805	32.2	76-179	.425	26-70	.371	58-70	.829	25	46	71	2.8	66	1	76	65	11	36	236	9.4
11	Pollard, Nyla	25-21	700	28.0	36-120	.300	14-52	.269	26-38	.684	26	44	70	2.8	55	3	64	46	3	26	112	4.5
25	Rogers, Gabby	24-21	440	18.3	45-97	.464	0-1	.000	16-18	.889	24	44	68	2.8	77	0	6	23	8	15	106	4.4
15	Krause, Emma	25-3	355	14.2	37-104	.356	27-80	.338	7-12	.583	13	37	50	2.0	43	1	14	12	12	6	108	4.3
05	Jones, Misha	25-3	313	12.5	27-66	.409	17-48	.354	16-18	.889	13	33	46	1.8	45	0	26	19	5	3	87	3.5
00	Underwood, Libby	12-0	65	5.4	4-13	.308	0-3	.000	2-4	.500	3	0	3	0.3	1	0	2	6	1	1	10	0.8
21	Eichner, Bailey	15-0	93	6.2	3-12	.250	1-4	.250	1-2	.500	5	12	17	1.1	11	0	5	5	1	3	8	0.5
20	Smith, Chandler	12-1	61	5.1	1-3	.333	0-0	.000	1-4	.250	3	12	15	1.3	8	0	1	7	4	1	3	0.3
03	Taylor, Ashley	4-0	11	2.8	0-5	.000	0-4	.000	1-2	.500	0	0	0	0.0	0	0	0	0	0	0	1	0.3
32	Stover, Caroline	2-0	1	0.5	0-2	.000	0-0	.000	0-0	.000	0	0	0	0.0	0	0	0	0	0	0	0	0.0
Team											52	58	110				12					
Total.....		0	5050		552-1370	.403	184-529	.348	322-427	.754	232	574	806	0.0	473	13	374	422	88	202	1610	0.0
Opponents.....		0	5049		563-1393	.404	125-430	.291	372-520	.715	313	625	938	0.0	470	9	299	451	90	222	1623	0.0

TEAM STATISTICS			WM	OPP	Date	Opponent	Score	Att.
SCORING			1610	1623	11/06/18	VCU	L 55-72	684
Points per game			64.4	64.9	11/12/18	HOWARD	W 88-75	564
Scoring margin			-0.5	-	11/17/18	at Loyola	W 65-49	352
FIELD GOALS-ATT			552-1370	563-1393	11/24/18	at Davidson	L 65-76	412
Field goal pct			.403	.404	11/27/18	EAST CAROLINA	W 63-43	574
3 POINT FG-ATT			184-529	125-430	11/30/18	at HARTFORD	L 45-50	649
3-point FG pct			.348	.291	12/02/18	at Fairfield	W 60-54	627
3-pt FG made per game			7.4	5.0	12/05/18	RICHMOND	W 65-55	634
FREE THROWS-ATT			322-427	372-520	12/8/18	at Old Dominion	L 69-83	1802
Free throw pct			.754	.715	12/21/18	at Norfolk State	W 55-44	246
F-Throws made per game			12.9	14.9	12/29/18	GEORGE WASHINGTON	W 73-59	611
REBOUNDS			806	938	* 1/4/19	at Hofstra	W 60-55	323
Rebounds per game			32.2	37.5	* 01/06/19	at Northeastern	L 74-88	540
Rebounding margin			-5.3	-	* 01/11/19	UNCW	W 70-64	657
ASSISTS			374	299	* 01/13/19	COL. OF CHARLESTON	L 54-66	582
Assists per game			15.0	12.0	* 01/20/19	ELON	W 65-60	904
TURNOVERS			422	451	* 1/25/19	at James Madison	L 48-65	2234
Turnovers per game			16.9	18.0	* 1/27/19	at Towson	W 80-69	609
Turnover margin			+1.2	-	* 02/01/19	DELAWARE	L 59-70	634
Assist/turnover ratio			0.9	0.7	* 02/03/19	DREXEL	L 58-62	962
STEALS			202	222	* 02/08/19	at Charleston	Lo2 77-79	3031
Steals per game			8.1	8.9	* 02/10/19	at UNCW	L 58-66	945
BLOCKS			88	90	* 2/17/19	at Elon	W 64-59	527
Blocks per game			3.5	3.6	* 02/22/19	TOWSON	L 75-82	727
ATTENDANCE			8277	12297	* 02/24/19	JAMES MADISON	L 65-78	744
Home games-Avg/Game			12-690	13-946				
Neutral site-Avg/Game			-	0-0				

* - CAA game

Score by Periods	1st	2nd	3rd	4th	OT	OT2	Totals
William & Mary	393	390	442	371	9	5	1610
Opponents	382	395	425	405	9	7	1623



W&M Women's Basketball
William & Mary Combined Team Statistics (as of Feb 27, 2019)
CAA games only

RECORD:	OVERALL	HOME	AWAY	NEUTRAL
ALLGAMES	5-9	2-5	3-4	0-0
CONFERENCE	5-9	2-5	3-4	0-0
NON-CONFERENCE	0-0	0-0	0-0	0-0

#	Player	gp-gs	min	avg	Total		3-Point		F-Throw		Rebounds				pf	dq	a	to	blk	stl	pts	avg
					fg-fga	fg%	3fg-fga	3fg%	ft-fga	ft%	off	def	tot	avg								
02	Boggs, Bianca	14-14	501	35.8	77-188	.410	22-60	.367	67-94	.713	22	80	102	7.3	36	3	56	57	11	30	243	17.4
30	Reynolds, Victoria	14-12	479	34.2	56-128	.438	11-31	.355	29-38	.763	9	52	61	4.4	37	2	28	43	9	20	152	10.9
10	Hodgson, Eva	14-14	491	35.1	47-108	.435	18-44	.409	40-44	.909	19	24	43	3.1	35	1	39	36	9	20	152	10.9
12	Birdsong, Harper	14-0	283	20.2	43-125	.344	23-66	.348	19-25	.760	10	21	31	2.2	22	0	13	18	4	8	128	9.1
25	Rogers, Gabby	13-10	233	17.9	23-52	.442	0-0	.000	11-12	.917	14	25	39	3.0	42	0	4	14	6	8	57	4.4
11	Pollard, Nyla	14-14	386	27.6	19-61	.311	9-29	.310	14-20	.700	18	22	40	2.9	28	2	36	25	2	13	61	4.4
05	Jones, Misha	14-2	201	14.4	16-40	.400	12-32	.375	11-12	.917	4	23	27	1.9	28	0	15	12	3	2	55	3.9
15	Krause, Emma	14-3	181	12.9	18-49	.367	13-40	.325	2-2	1.000	4	14	18	1.3	25	1	5	8	5	2	51	3.6
21	Eichner, Bailey	9-0	50	5.6	2-5	.400	1-1	1.000	0-0	.000	1	5	6	0.7	7	0	4	3	0	0	5	0.6
20	Smith, Chandler	5-1	29	5.8	1-2	.500	0-0	.000	0-2	.000	2	5	7	1.4	4	0	0	3	2	1	2	0.4
00	Underwood, Libby	3-0	13	4.3	0-4	.000	0-1	.000	1-2	.500	2	0	2	0.7	0	0	1	1	0	0	1	0.3
03	Taylor, Ashley	1-0	3	3.0	0-1	.000	0-1	.000	0-0	.000	0	0	0	0.0	0	0	0	0	0	0	0	0.0
Team											31	26	57				7					
Total.....		14	2850		302-763	.396	109-305	.357	194-251	.773	136	297	433	30.9	264	9	201	227	51	104	907	64.8
Opponents.....		14	2850		333-800	.416	74-245	.302	223-304	.734	199	352	551	39.4	263	6	170	236	53	119	963	68.8







TEAM STATISTICS	WM	OPP	Date	Opponent	Score	Att.
SCORING	907	963	* 1/4/19	at Hofstra	W 60-55	323
Points per game	64.8	68.8	* 01/06/19	at Northeastern	L 74-88	540
Scoring margin	-4.0	-	* 01/11/19	UNCW	W 70-64	657
FIELD GOALS-ATT	302-763	333-800	* 01/13/19	COL. OF CHARLESTON	L 54-66	582
Field goal pct	.396	.416	* 01/20/19	ELON	W 65-60	904
3 POINT FG-ATT	109-305	74-245	* 1/25/19	at James Madison	L 48-65	2234
3-point FG pct	.357	.302	* 1/27/19	at Towson	W 80-69	609
3-pt FG made per game	7.8	5.3	* 02/01/19	DELAWARE	L 59-70	634
FREE THROWS-ATT	194-251	223-304	* 02/03/19	DREXEL	L 58-62	962
Free throw pct	.773	.734	* 02/08/19	at Charleston	Lo2 77-79	3031
F-Throws made per game	13.9	15.9	* 02/10/19	at UNCW	L 58-66	945
REBOUNDS	433	551	* 2/17/19	at Elon	W 64-59	527
Rebounds per game	30.9	39.4	* 02/22/19	TOWSON	L 75-82	727
Rebounding margin	-8.4	-	* 02/24/19	JAMES MADISON	L 65-78	744
ASSISTS	201	170				
Assists per game	14.4	12.1				
TURNOVERS	227	236				
Turnovers per game	16.2	16.9				
Turnover margin	+0.6	-				
Assist/turnover ratio	0.9	0.7				
STEALS	104	119				
Steals per game	7.4	8.5				
BLOCKS	51	53				
Blocks per game	3.6	3.8				
ATTENDANCE	5210	8209				
Home games-Avg/Game	7-744	7-1173				
Neutral site-Avg/Game	-	0-0				

* - CAA game

Score by Periods	1st	2nd	3rd	4th	OT	OT2	Totals
William & Mary	218	211	250	214	9	5	907
Opponents	225	235	250	237	9	7	963

WILLIAM & MARY RADIO AND TV CHART

NOTES: W&M looks to get back into the win column as it hits the road for the final two games starting at Drexel on Friday night ... Senior Bianca Boggs leads the Tribe averaging 16.8 ppg and 7.0 rpg. Junior Victoria Reynolds is second on the team averaging 10.8 points per game. Redshirt sophomore Harper Birdsong is averaging 10.0 ppg., while freshman Eva Hodgson is just outside at 9.4 points per game.

NOTES: W&M looks to get back into the win column as it hits the road for the final two games starting at Drexel on Friday night ... Senior Bianca Boggs leads the Tribe averaging 16.8 ppg and 7.0 rpg. Junior Victoria Reynolds is second on the team averaging 10.8 points per game. Redshirt sophomore Harper Birdsong is averaging 10.0 ppg., while freshman Eva Hodgson is just outside at 9.4 points per game.				RECORD OVERALL CAA HOME AWAY/NEUTRAL		2018-19 12-13 5-9 6-6 6-7/0-0		LAST YR 16-14 7-11 9-6 7-7/0-1		STATS FG% FT% 3PT% POINTS REBOUNDS TURNOVERS		W&M .403 .754 .348 64.4 32.2 16.8		OPP .404 .715 .291 64.9 37.5 18.0		DU .397 .709 .287 58.9 34.8 12.4		OPP .361 .652 .231 47.6 34.1 17.7		W&M'S LAST THREE GAMES Feb. 17 at Elon* W, 64-59 Hodgson 14 pts, Boggs 13 pts, 9 reb, Birdsong 13 pts Feb. 22 TOWSON* L, 75-82 Boggs 18 pts, Rogers 17 pts, Reynolds 15 pts Feb. 24 JAMES MADISON* L, 78-65 Boggs 16 pts, Reynolds 16 pts, Birdsong 11 pts.			
	0 LIBBY UNDERWOOD, G SO./5-9/RYE, N.H./PORTSMOUTH			PPG	0.8	FG%	.308	RPG	0.3	FT%	.500 (2-4)	APG	0.2	3PT%	.000	Looking to expand her role during her second season with the Green and Gold. Had six points and added a block and assist against VCU (11/6). Scored a career-high 8 points and added out 3 assists against USC Upstate (12/5/17). Added four points in a rebound against Drexel (1/9/18). Grabbed a rebound in the CAA Quarterfinal against Elon (3/8/18).						POINTS 8 vs. USC Upstate (12/5/17) REBOUNDS 3 vs. Northeastern (1/21/18) ASSISTS 3 vs. USC Upstate (12/5/17) LAST GAME: DNP - COACH'S DECISION	
	1 SYDNEY WAGNER, G SO./5-6/PHOENIXVILLE, PA./SPRING FORD SENIOR HIGH (STETSON)			PPG	-	FG%	-	RPG	-	FT%	-	SPG	-	3PT%	-	Transfer from Stetson that has to sit out the 18-19 season due to NCAA Transfer rule. Appeared in 32 games with nine starters for the Hatters last season. Scored a career-high 20 points against Florida. Dropped 18 points against on 5-of-8 from 3-point range against Webber International. Averaged 6.0 ppg and knocked down 42 triples during her freshman season at Stetson.						POINTS 20 vs. Florida (11/22/17) REBOUNDS 5 vs. Lipscomb (2/19/18) ASSISTS 3 vs. Lipscomb (2/19/18) LAST GAME: DNP - TRANSFER RULE	
	2 BIANCA BOGGS, G SR./5-8/WALDORF, MD./ST. MARY'S RYKEN			PPG	16.8	FG%	.423	RPG	7.0	FT%	.729 (102-140)	APG	4.0	3PT%	.333	Named team captain for the 2018-19 season. Tabbed CAA Player of the Week for the week of Dec. 31. Has 15 20-point games, including eight 20-point games this season. Scored a career-high 33 points in a win at St. Francis (12/2/17). Ranks ninth in school history with 1,345 career points.						POINTS 33 vs. St. Francis (Pa.) (12/2/17) REBOUNDS 11 (2x) last time vs. ECU (11/27/18) ASSISTS 8 (2x) last time vs. Towson (2/22/19) LAST GAME: 16 PTS, 6 REB, 7 AST	
	3 ASHLEY TAYLOR, G JR./6-0/CHARLOTTESVILLE, VA./ST. ANNE'S BELLEFIELD			PPG	0.3	FG%	.000	RPG	0.0	FT%	.500 (1-2)	APG	0.0	3PT%	.000	Has seen action in 21 games during her career with the Tribe. Made her first career basket, a 3-pointer, in the win against USC Upstate (12/5/17). Grabbed a pair of rebounds and added an assist against Loyola (11/25/17). Hit a basket and grabbed a board at Elon (3/1/18)						POINTS 3 vs. USC Upstate (12/5/17) REBOUNDS 2 vs. Loyola (11/25/17) ASSISTS 1 (4x) last time at Charleston (12/29/17) LAST GAME: DNP - COACH'S DECISION	
	5 MISHA JONES, G/F SR./5-9/MANASSAS PARK, VA./BATTLEFIELD			PPG	3.5	FG%	.409	RPG	1.8	FT%	.875 (14-16)	APG	1.0	3PT%	.354	Named a team captain for the second straight season this year. Matched a career-high with nine points on three, 3-pointers vs. UNCW (1/11). Grabbed a career-high eight boards with eight points in the win at Towson (1/27). Made her first career start against George Washington (12/28) and scored four points. Scored a career-high nine points, including seven straight points in the win vs. Howard.						POINTS 9 vs. Howard (11/12/18) REBOUNDS 8 at Towson (1/27/19) ASSISTS 4 (3x) at Old Dominion (12/8/18) LAST GAME: 4 PTS, 1 REB IN 16 MINS	
	10 EVA HODGSON, G FR./5-9/RINDGE, N.H./NEW HAMPTON SCHOOL			PPG	9.4	FG%	.425	RPG	2.8	FT%	.829 (58-70)	APG	3.0	3PT%	.371	Named CAA Rookie of the Week for the week of Dec. 3, Jan. 7, and Feb. 11. Poured in a career-high 24 points at UNCW (2/10). Scored a then-career-high 18 points in the CAA opening win at Hofstra (1/4). Netted 13 pts and grabbed a CH six boards with five dimes in the win at Towson (1/20). Her parents and two brothers all played Division III basketball.						POINTS 24 at UNCW (2/10/19) REBOUNDS 6 (2x) last time vs. Drexel (2/3/19) ASSISTS 6 (3x) last time vs. Elon (1/20/19) LAST GAME: 2 REB, 5 AST, 3 STL	
	11 NYLA POLLARD, G SO./5-9/VIRGINIA BEACH, VA./PRINCESS ANNE			PPG	4.5	FG%	.300	RPG	2.8	FT%	.684 (26-38)	APG	2.6	3PT%	.269	Made her first start of the year & had a double-double (10 pts, 12 reb) vs. ECU (11/27). Scored nine points on three 3-pointers and grabbed two boards against JMU (2/24). Had nine points and added two rebounds, four assists, and a steal at Loyola (11/17). Chipped in nine points and a career-high six helpers in the win vs. UNCW (1/11). Scored a career-high 14 points, four assists, three rebounds against Upstate (12/5/17).						POINTS 14 vs. USC Upstate (12/5/17) REBOUNDS 12 vs. East Carolina (11/27/18) ASSISTS 5 (2x) last time vs. ODU (12/17/17) LAST GAME: 9 PTS, 2 REB, 1 AST	
	12 HARPER BIRDSONG, G R-SO./5-10/SUFFOLK, VA./NANSEMOND SUFFOLK (GW)			PPG	10.0	FG%	.300	RPG	1.8	FT%	.727 (32-44)	APG	1.1	3PT%	.392	Set a career-high with 18 points and four assists at Old Dominion (12/8). Notched 16 points and grabbed five rebounds at Northeastern (1/6). Scored 16 points and had three steals against George Washington (12/28). Had 15 points, three rebounds, one steal, and one block against Drexel (2/3). Appeared in nine games during her freshman season at George Washington.						POINTS 18 vs. Old Dominion (12/8/18) REBOUNDS 5 (2x) last time vs. Charleston (1/13/19) ASSISTS 4 at Old Dominion (12/8/18) LAST GAME: 11 PTS, 2 REB, 1 AST	
	15 EMMA KRAUSE, F FR./6-2/PLANTATION, FLA./CARDINAL GIBBONS			PPG	4.3	FG%	.356	RPG	2.0	FT%	.584 (7-12)	BPG	0.5	3PT%	.338	Named CAA Rookie of the Week for the week of Dec. 24. Made her first career start and played 12 minutes against UNCW (1/11). Scored 13 points and grabbed four rebounds in the win at Towson (1/27). Netted a career-high 14 points on four 3-pointers against Howard (11/12). Hit three 3-pointers for nine points in the win against Elon (1/20).						POINTS 14 vs. Howard (11/12/18) REBOUNDS 5 vs. Old Dominion (12/8/18) ASSISTS 3 at Loyola (11/17/18) LAST GAME: 2 PTS, 2 AST IN 9 MINS	
	20 CHANDLER SMITH, C SR./6-3/PORT TOBACCO, MD./ST. MARY'S-RYKEN			PPG	0.3	FG%	.333	RPG	1.3	FT%	.250 (1-4)	BPG	0.3	3PT%	-	Named a team captain for her senior season. Key reserve in the post that has appeared in 64 career games. Made her first career start at UNCW (2/10) & grabbed a CH six boards in a CH 20 mins. Tied a career-high with four points in a win at St. Francis (12/1/17). Rejected 28 shots during her career.						POINTS 4 (4x) last time at SFU (12/2/17) REBOUNDS 6 at UNCW (2/10/19) BLOCKS 3 vs. Mount St. Mary's (12/18/16) LAST GAME: DNP - COACH'S DECISION	
	21 BAILEY EICHNER, G/F SO./6-1/CUDAHY, WISC./CUDAHY			PPG	0.5	FG%	.250	RPG	1.1	FT%	.500 (1-2)	APG	0.3	3PT%	.250	Looking to expand her role this year after seeing action in 17 games last year. Scored a career-high five points against James Madison (2/24). Grabbed a career-high six rebounds at Old Dominion (12/8). Had a career-high four points and added a career-high five rebounds vs. JMU (2/2/18). Three sport athlete in high school playing basketball, volleyball, and track & field.						POINTS 5 vs. James Madison (2/24/19) REBOUNDS 6 at Old Dominion (12/8/18) ASSISTS 2 (2x) last time vs. JMU (2/24/19) LAST GAME: 5 PTS, 2 REB, 2 AST	
	25 GABBY ROGERS, C SO./6-1/DALLAS, TEXAS/BISHOP LYNCH			PPG	4.5	FG%	.464	RPG	2.8	FT%	.889 (16-18)	SPG	0.6	3PT%	.000	Center that has started 20 games this season for the Tribe. Poured a career-high 17 points on 8-of-9 from the field against Towson (2/22). Notched her first career double-double with 14 points and 12 rebounds at CoFC (2/8). Had eight points and twith five rebounds in the win at Fairfield (12/2). Scored a career-high 10 points and a steal at Davidson (11/24).						POINTS 14 at Charleston (2/8/19) REBOUNDS 12 at Charleston (2/8/19) STEALS 3 (3x) last time at Hofstra (1/4/19) LAST GAME: 2 PTS, 1 REB IN 16 MINS	
	30 VICTORIA REYNOLDS, F JR./5-10/FAIRFAX, VA./ARCHBISHOP SPALDING			PPG	10.8	FG%	.451	RPG	5.4	FT%	.800 (60-75)	SPG	1.3	3PT%	.400	Recorded a double-double with 15 points and 15 rebounds against ECU (11/27/18). Tied a season-high 17 points and five rebounds at Charleston (2/8). Notched a season-high 17 points with 7 rebs vs. UNCW (1/11). Poured in a career-high 22 points in the win at St. Francis (12/2/17). Grabbed 18 boards in the win against Charleston (1/26/18).						POINTS 22 vs. St. Francis (Pa.) (12/2/17) REBOUNDS 18 vs. Charleston (1/26/18) STEALS 7 vs. Hofstra (1/28/18) LAST GAME: 16 PTS, 3 REB, 1 AST	
	32 CAROLINE STOVER, C FR./6-3/PLYMPTON, MASS./CARDINAL SPELLMAN			PPG	0.0	FG%	.000	RPG	0.0	FT%	-	APG	0.0	3PT%	-	Made her collegiate debut in the Tribe's win over Loyola. Freshman post player looking to break into the post rotation this season. Played four seasons of varsity basketball at Cardinal Spellman. Ranked as the No. 131 in her class by Blue Star. Tabbed to the Catholic Central League All-Star team.						POINTS - REBOUNDS - STEALS - LAST GAME: DNP - COACH'S DECISION	

NOTES: