



WILLIAM & MARY

MEDIA RELATIONS DIRECTOR: Andrew Phillips / **PHONE:** (757) 221-3344 / **CELL:** (804) 840-4439 / **EMAIL:** atphillips01@wm.edu

TRIBE BY THE NUMBERS

14	Senior Bianca Boggs now has 14 career 20-point performances. She is one away from moving into a tie for 7th in W&M history.
15.1	W&M is second in the CAA with 15.1 assists per game. The Tribe has 286 assists this season.
59	Eva Hodgson has recorded 59 assists this season, which is tied for seventh among W&M freshman. She needs four more to move into sole possession of fifth place.
62	The senior class – Bianca Boggs, Misha Jones, & Chandler Smith – have won 62 games. They are just five wins away from becoming the winningest class in school history.
70	70 seems to be a magic number under Swanson. W&M has reached that mark 43 times under Swanson, and has posted a 39-6 mark when it scores more than 70 points.
90%	Since the start of CAA play, freshman Eva Hodgson is shooting 90-percent from the free throw. She has connected on 27-of-30 from the stripe in the past eight games.
100	Bianca Boggs will be making her 100th career start this afternoon. She is just the 10th player in school history to accomplish the feat, and third under Swanson.
1242	Boggs now has 1,242 career points that ranks her 12th in school history. The senior needs 76 more points to move into the top 10 passing Karen Jordan '87 & Janine Aldridge '13.

GAME 20

WILLIAM & MARY (11-8, 4-4 CAA) **vs. DREXEL** (14-5, 6-2 CAA)
Sunday, Feb. 3, 2019 | 2:00 PM | Williamsburg, Va. | Kaplan Arena
Video: TribeAthletics.TV | Live Stats: TribeAthletics.com

SERIES HISTORY

ALL-TIME	Drexel leads 25-15	Last: Drexel, 54-34 (2/18/18) (Daskalakis Athletic Center)
AT W&M	Drexel leads 12-5	Last: Drexel, 65-58 (ot) (1/5/18) (Kaplan Arena)

W&M NEWS AND NOTES

- The William & Mary women's basketball team closes the weekend as it plays host to Drexel in the annual Golden Game on Sunday, Feb. 3. Tip time between the Tribe and the Dragons is set for 2 p.m.
- W&M and Drexel will meet for the 41st time in series history this afternoon with the Dragons holding a 25-15 advantage in the series. DU swept the season series last weekend, including picking up a 65-58 victory in overtime last January in Kaplan Arena. The last Tribe win in the series came on the final day of the 2016-17 regular season.
- The Tribe has played on 26-consecutive Super Bowl Sunday's including this afternoon's contest, dating back to Sunday, Jan. 31, 1993. The Tribe has posted an 8-23 record on games played on Super Bowl Sunday all-time. Under head coach Ed Swanson, W&M is 3-2 in games on Super Sunday, including wins over College of Charleston (81-76), Northeastern (72-66 2OT), and Towson (75-63).
- Today's game is also the annual Golden Game, which is now in its third season. The Tribe has posted a 1-1 mark in the game, picking up a 71-53 against Northeastern in the game last year. W&M has drawn more 1,000 fans in each of the previous Golden Games and are averaging 1,054.5 fans in the two contests.
- The Tribe has limited its last five of its last six opponents to 25-percent, or worse, from 3-point range, including a season-low 6-percent from 3-point range in the win over Elon. W&M has lowered its defensive 3-point percentage to 25.8-percent, which is second in the CAA.
- W&M has posted a perfect 7-0 record coming off of a loss this season with its most recent triumph coming in an 80-69 victory at Towson Sunday.
- The Tribe has moved its free throw percentage back to first in the CAA shooting 74.1-percent from the stripe. The Tribe shot a perfect 16-for-16 from the line at James Madison on Jan. 25, which was the first time the Tribe was perfect from the line (minimum 8 attempts) since 2016.
- W&M has outscored its opponents 604-572 in the first half games this season, but has been out scored 625-609 in the second half of games. W&M is 11-0 when it leads at the break, but is 0-8 when it trails or is tied at the half.
- The Green and Gold is hitting 3-pointers at the highest clip under Ed Swanson this season, and has had five, or more, 3-pointers in 17 of its 19 games. W&M leads the CAA hitting 7.4 3-pointers per game. That mark is two more than the next best average in the six-years under head coach Ed Swanson. As a team, the Tribe is hitting 35.4-percent from range, which is third in the CAA. Furthermore, W&M has hit more than 10 3-pointers in five games this season.
- W&M claimed its fourth CAA weekly award as freshman Eva Hodgson earned her second CAA Rookie of the Week award after averaging 17.0 points per game on 10-of-18 from the floor for the week of Jan. 7. Tribe senior Bianca Boggs was named the CAA Player of the Week for the week of Dec. 31, while freshman Emma Krause earned rookie of the week on Dec. 24.
- Boggs was announced as one of 30 national candidates for the Senior CLASS Award. The Senior CLASS Award focuses on the total student-athlete and encourages students to use their platform in athletics to make a positive impact as leaders in their communities. Boggs was the lone player from CAA women's basketball honored, and along with men's basketball player Paul Rowley, W&M was one of three DI schools with a candidate for the both the men's and women's Senior CLASS Award.
- Hodgson has started every game this season and the early returns on the rookie point guard have been good. The freshman has been in double-figures in nine games, and is averaging 8.8 points per game (most among CAA freshman), with 2.6 rebounds, and 3.1 helpers per contest. Hodgson scored a career-high 18 points in the CAA opener at Hofstra, and is seventh in the CAA with a 1.2 assist/turnover ratio.
- Boggs has been in double-figures in 16 of 19 games this season, and has accomplished that feat in 41 of her last 49 contests. Boggs was selected to the Preseason All-CAA First-Team after a breakout junior season. The senior captain leads the team with 16.7 points per night, and has added 7.0 rebounds and 3.8 assists per night. She is one of three players nationally to lead her team in points, rebounds, assists, steals, and blocks as of Feb. 1. The senior has turned in 14, 20-point career games, which ranks her 10th all-time in school history.

WHEN REFERENCING WILLIAM & MARY AND TRIBE:

William & Mary: preferred in all but formal treatments
W&M: most informal, use as second reference or on scorebug
College of William & Mary: preferred formal treatment
Do not use: WM, William and Mary, College of William and Mary, The College of William and Mary, The College

The William & Mary Athletics official nickname is the Tribe. While the Griffin is the official mascot of William & Mary Tribe Athletics, do not reference teams or the school as the Griffins.

	Nov. 6	VCU	L, 55-72	Senior Bianca Boggs scored 15 points, but the Tribe couldn't overcome an early scoring drought falling to in-state rival VCU on opening night.
	NOV. 12	HOWARD	W, 88-75	Four players scored in double-figures as the Tribe picked up its first victory of the season. Senior Bianca Boggs led the Tribe with 26 points, nine rebounds, and seven assists.
	Nov. 17	at Loyola (Md.)	W, 65-49	The Tribe led throughout as it won its first road game of the season with a convincing 65-49 decision at Davidson. Boggs (14) and Reynolds (10) were both in double-figures.
	Nov. 24	at Davidson	L, 65-76	W&M fought all afternoon, but Davidson pulled away down the stretch as it fell to Davidson 76-65. Bianca Boggs notched a double-double with 18 points and 10 rebs.
	NOV. 27	ECU	W, 63-43	Both Victoria Reynolds and Nyla Pollard recorded a double-double as the Tribe cruised to a 20-point victory after previously unbeaten East Carolina.
	Nov. 30	at Hartford	L, 45-50	W&M couldn't overcome a cold shooting night as it shot just 22.2-percent (12-of-54) from the floor. Freshman Eva Hodgson led the team with a career-high 14 points.
	Dec. 2	at Fairfield	W, 60-54	The Tribe outscored the Stags 6-0 in the final moments to pick up its fourth win of the season. Senior Bianca Boggs scored a game-high 22 to pace the Tribe.
	Dec. 5	RICHMOND	W, 65-55	W&M never trailed as it picked up its third straight win against Richmond. Freshman Eva Hodgson (15 pts) and Harper Birdson (13 pts) both had career-highs.
	Dec. 8	at Old Dominion	L, 69-83	ODU snapped a three-game losing streak to the Tribe at home. Redshirt sophomore Harper Birdsong led the Tribe with a career-high 18 points.
	Dec. 21	at Norfolk State	W, 55-44	The Tribe used a strong defensive effort to gut out a 55-44 road win at Norfolk State following a 13-day lay-off. Sophomore Harper Birdsong had a game-high 14 points off of the bench.
	DEC. 29	GEORGE WASHINGTON	W, 73-59	Senior Bianca Boggs recorded her second double-double with 26 points and 10 rebounds as the Tribe topped GW in a wire-to-wire win, 73-59.
	Jan. 4	at Hofstra*	W, 60-55	Senior Bianca Boggs had another double-double (22 pts, 10 reb) and freshman Eva Hodgson had a career-high 18 points as W&M won its second-ever game at Hofstra.
	Jan. 6	at Northeastern*	L, 74-88	Three scored in double-figures, but W&M couldn't overcome a big second half from Northeastern. Senior Bianca Boggs recorded her third straight 20-point game with 21.
	JAN. 11	UNCW	W, 70-64	W&M closed the first quarter on 17-0 run and never looked back as it picked up a 70-64 victory over UNCW. Bianca Boggs had 25 points and Victoria Reynolds had 17.
	JAN. 13	CHARLESTON	L, 54-66	The Tribe tied the game three times, but couldn't overcome a feisty Charleston team. Senior Bianca Boggs scored a game-high 18 points in the contest.
	JAN. 20	ELON *	W, 65-60	W&M used a 15-3 run to end third quarter and start the fourth to topple defending CAA Champion Elon. Bianca Boggs and Harper Birdsong led the team with 13 points.
	Jan. 25	at James Madison *	L, 65-48	The Tribe couldn't shake a tough shooting night and a slow start as it fell at James Madison. Freshman Eva Hodgson led the Tribe with 13 points.
	Jan. 27	at Towson*	W, 80-69	Four scored in double-figures as the Tribe became the first team to win at SECU this arena with an 80-69 triumph. Senior Bianca Boggs finished with a game-high 22 points.
	FEB. 1	DELAWARE*	L, 59-70	W&M couldn't overcome a fast Delaware start as at fell at home to the visiting Blue Hens. Four scored in double-figures for the Tribe led by Reynolds with 14 points.
	FEB. 3	DREXEL*	2 PM	W&M plays on its 26th-consecutive Super Bowl Sunday as it welcomes Drexel for the Golden Game. The Tribe is 3-2 under Swanson on Super Sunday.
	Feb. 8	at Charleston*	12 PM	The Tribe opens a season-long three-game road swing with an afternoon game at Charleston. W&M is 3-2 at Charleston since the Cougars joined the league.
	Feb. 10	at UNCW*	2 PM	W&M heads to the Port City to close the weekend. The Tribe has won its last two games against UNCW at Trask Coliseum.
	Feb. 17	at Elon *	1 PM	The Tribe heads to the brand new Schar Center as it closes out the regular season with Elon. The Phoenix have topped W&M in the last two CAA Tournaments.
	FEB. 22	TOWSON*	7 PM	Towson and W&M close the regular season in Williamsburg this year. The Tigers squeaked out a one-point victory in its last trip to Kaplan Arena.
	FEB. 24	JAMES MADISON*	2 PM	W&M will raise breast cancer awareness as it welcomes James Madison to Kaplan Arena. The Dukes have won the last two meetings in Kaplan Arena.
	March 1	at Drexel*	7 PM	Drexel and W&M meet for the final time in the regular season when the Tribe travels to Philly. The Dragons are the defending CAA regular season champion.
	March 3	at Delaware*	2 PM	The Tribe heads to the site of the 2019 CAA Tournament when it travels to Delaware. W&M is 3-2 under Ed Swanson at Delaware during his tenure.
	MARCH 7	NORTHEASTERN*	7 PM	The Green and Gold plays host to Northeastern in its penultimate regular season game. The Tribe has a seven-game winning streak against the Huskies in Williamsburg.
	MARCH 9	HOFSTRA*	2 PM	W&M closes the regular season with the team it started CAA play against. The Tribe picked up a 63-53 victory over the Pride at Kaplan Arena last year.
	Mar. 13-16	CAA Championship		Delaware hosts the 2019 CAA Tournament at the Bob Carpenter Center in Newark, Del. The event runs from March 13-16.



GENERAL INFORMATION		LAST GAME STARTERS																																																																																																																																																																																																																																													
<p>Name: College of William & Mary Location: Williamsburg, Va. Founded: 1693 (2nd oldest college in U.S.) Enrollment (includes graduate): 8,617 Nickname: Tribe Colors: Green, Gold and Silver Arena (capacity): Kaplan Arena (8,600) Affiliation: NCAA Division I Conference: Colonial Athletic Association (CAA) President: Katherine A. Rowe (Carleton, 1984) Chancellor: Robert M. Gates (William & Mary, 1965) Director of Athletics: Samantha K. Huge (Gordon, 1992)</p>		<p>2 BIANCA BOGGS Sr. • G • 5-9 Waldorf, Md./St. Mary's Ryken</p> <table border="1"> <thead> <tr> <th>G-GS</th> <th>PPG</th> <th>RPG</th> <th>APG</th> <th>FG%</th> <th>3P%</th> <th>FT%</th> <th>STL</th> <th>BLK</th> </tr> </thead> <tbody> <tr> <td>19-19</td> <td>16.7</td> <td>7.0</td> <td>3.8</td> <td>.410</td> <td>.354</td> <td>.714</td> <td>42</td> <td>14</td> </tr> </tbody> </table> <ul style="list-style-type: none"> Named team captain for the 2018-19 season. Tabbed CAA Player of the Week for the week of Dec. 31. Has 14 20-point games, including seven 20-point games this season. Scored a career-high 33 points in a win at St. Francis (12/2/17). Ranks 12 in school history with 1,242 career points. 										G-GS	PPG	RPG	APG	FG%	3P%	FT%	STL	BLK	19-19	16.7	7.0	3.8	.410	.354	.714	42	14																																																																																																																																																																																																																		
G-GS	PPG	RPG	APG	FG%	3P%	FT%	STL	BLK																																																																																																																																																																																																																																							
19-19	16.7	7.0	3.8	.410	.354	.714	42	14																																																																																																																																																																																																																																							
		<p>10 EVA HODGSON Fr. • G • 5-9 Rindge, N.H./New Hampton School</p> <table border="1"> <thead> <tr> <th>G-GS</th> <th>PPG</th> <th>RPG</th> <th>APG</th> <th>FG%</th> <th>3P%</th> <th>FT%</th> <th>STL</th> <th>BLK</th> </tr> </thead> <tbody> <tr> <td>19-19</td> <td>8.8</td> <td>2.6</td> <td>3.1</td> <td>.411</td> <td>.348</td> <td>.804</td> <td>27</td> <td>13</td> </tr> </tbody> </table> <ul style="list-style-type: none"> Named CAA Rookie of the Week for the week of Dec. 3 and Jan. 7. Scored a career-high 18 points in the CAA opening win at Hofstra (1/4). Had 16 points, four rebounds, two assists, and two steals at Northeastern (1/6). Set career-highs against Richmond (12/5) in points (15) and assists (6). Her parents and two brothers all played Division III basketball. 										G-GS	PPG	RPG	APG	FG%	3P%	FT%	STL	BLK	19-19	8.8	2.6	3.1	.411	.348	.804	27	13																																																																																																																																																																																																																		
G-GS	PPG	RPG	APG	FG%	3P%	FT%	STL	BLK																																																																																																																																																																																																																																							
19-19	8.8	2.6	3.1	.411	.348	.804	27	13																																																																																																																																																																																																																																							
<p>WOMEN'S BASKETBALL INFORMATION Head Coach: Ed Swanson (Sacred Heart, 1989) Record at W&M: 85-85 (sixth season) Career Record: 491-349 (29th season) Assistant Coach: Lynne-Ann Kokoski (Bryant, 2008) Assistant Coach: Chanel Murchison (William & Mary, 2013) Assistant Coach: Tierra Rudd (Winston-Salem, 2008) Dir. of Operations: Michelle Kurowski (UMBC, 2011) 2017-18 Record (CAA): 16-14 (7-11/6th) Starters Returning/Lost: 3/2 Letterwinners Returning/Lost: 10/4 First Year of Basketball: 1919-20 All-Time Record: 665-961-9 WNIT Appearances: None NCAA Appearances: None</p>		<p>11 NYLA POLLARD So. • G • 5-9 Virginia Beach, Va./Princess Anne</p> <table border="1"> <thead> <tr> <th>G-GS</th> <th>PPG</th> <th>RPG</th> <th>APG</th> <th>FG%</th> <th>3P%</th> <th>FT%</th> <th>STL</th> <th>BLK</th> </tr> </thead> <tbody> <tr> <td>19-15</td> <td>4.6</td> <td>2.7</td> <td>2.7</td> <td>.292</td> <td>.264</td> <td>.668</td> <td>18</td> <td>3</td> </tr> </tbody> </table> <ul style="list-style-type: none"> Made her first start of the year & had a double-double (10 pts, 12 reb) vs. ECU (11/27). Had nine points and added two rebounds, four assists, and a steal at Loyola (11/17). Chipped in nine points and a career-high six helpers in the win vs. UNCW (1/11). Scored a career-high 14 points, four assists, three rebounds against Upstate (12/5/17). 										G-GS	PPG	RPG	APG	FG%	3P%	FT%	STL	BLK	19-15	4.6	2.7	2.7	.292	.264	.668	18	3																																																																																																																																																																																																																		
G-GS	PPG	RPG	APG	FG%	3P%	FT%	STL	BLK																																																																																																																																																																																																																																							
19-15	4.6	2.7	2.7	.292	.264	.668	18	3																																																																																																																																																																																																																																							
		<p>25 GABBY ROGERS So. • C • 6-3 Dallas, Texas/Bishop Lynch</p> <table border="1"> <thead> <tr> <th>G-GS</th> <th>PPG</th> <th>RPG</th> <th>APG</th> <th>FG%</th> <th>3P%</th> <th>FT%</th> <th>STL</th> <th>BLK</th> </tr> </thead> <tbody> <tr> <td>19-17</td> <td>3.7</td> <td>2.6</td> <td>0.3</td> <td>.443</td> <td>.000</td> <td>.818</td> <td>14</td> <td>6</td> </tr> </tbody> </table> <ul style="list-style-type: none"> Center that has started 14 games this season for the Tribe. Had eight points and tied a career-high with five rebounds in the win at Fairfield (12/2). Scored a career-high 10 points and a steal at Davidson (11/24). Notched a then-season-high eight points in the win at Loyola (11/17). Made her first career start on opening night against VCU (11/6) scoring four points. 										G-GS	PPG	RPG	APG	FG%	3P%	FT%	STL	BLK	19-17	3.7	2.6	0.3	.443	.000	.818	14	6																																																																																																																																																																																																																		
G-GS	PPG	RPG	APG	FG%	3P%	FT%	STL	BLK																																																																																																																																																																																																																																							
19-17	3.7	2.6	0.3	.443	.000	.818	14	6																																																																																																																																																																																																																																							
<p>TRIBE TRENDS</p> <p>WILLIAM & MARY RECORD</p> <table border="1"> <tr><td>Overall.....</td><td>11-8</td></tr> <tr><td>CAA Games.....</td><td>4-4</td></tr> <tr><td>Leads at halftime.....</td><td>11-0</td></tr> <tr><td>Trails at halftime.....</td><td>0-7</td></tr> <tr><td>Tied at Halftime.....</td><td>0-1</td></tr> <tr><td>Home.....</td><td>6-3</td></tr> <tr><td>Away.....</td><td>5-5</td></tr> <tr><td>Neutral.....</td><td>0-0</td></tr> </table> <p>BY MONTH</p> <table border="1"> <tr><td>November.....</td><td>3-3</td></tr> <tr><td>December.....</td><td>4-1</td></tr> <tr><td>January.....</td><td>4-3</td></tr> <tr><td>February.....</td><td>0-1</td></tr> <tr><td>March.....</td><td>0-0</td></tr> </table> <p>SCORING...</p> <table border="1"> <tr><td>W&M scores fewer than 40 pts.....</td><td>0-0</td></tr> <tr><td>W&M scores 40-49.....</td><td>0-2</td></tr> <tr><td>W&M scores 50-59.....</td><td>1-3</td></tr> <tr><td>W&M scores 60-69.....</td><td>6-2</td></tr> <tr><td>W&M scores 70-79.....</td><td>2-1</td></tr> <tr><td>W&M scores 80+.....</td><td>2-0</td></tr> <tr><td>Opp. scores fewer than 40 pts.....</td><td>0-0</td></tr> <tr><td>Opp. scores 40-49.....</td><td>3-0</td></tr> <tr><td>Opp. scores 50-59.....</td><td>5-1</td></tr> <tr><td>Opp. scores 60-69.....</td><td>3-2</td></tr> <tr><td>Opp. scores 70-79.....</td><td>0-3</td></tr> <tr><td>Opp. scores 80+.....</td><td>0-2</td></tr> </table> <p>FROM THE FIELD ...</p> <table border="1"> <tr><td>W&M shoots below 35%.....</td><td>0-3</td></tr> <tr><td>W&M shoots better than 35%.....</td><td>11-5</td></tr> <tr><td>W&M shoots better than 40%.....</td><td>8-2</td></tr> <tr><td>W&M shoots better than 45%.....</td><td>9-1</td></tr> <tr><td>W&M shoots better than 50%.....</td><td>1-0</td></tr> </table> <p>FINAL MARGIN</p> <table border="1"> <tr><td>1-3 points.....</td><td>0-0</td></tr> <tr><td>4-7 points.....</td><td>4-1</td></tr> <tr><td>8-10 points.....</td><td>1-0</td></tr> <tr><td>11-15 points.....</td><td>4-5</td></tr> <tr><td>16+ points.....</td><td>2-2</td></tr> <tr><td>In Overtime.....</td><td>0-0</td></tr> </table> <p>BATTLE OF THE BOARDS</p> <table border="1"> <tr><td>Outrebounding opponent.....</td><td>3-0</td></tr> <tr><td>Outrebounded by opponent.....</td><td>7-8</td></tr> <tr><td>Rebounds are even.....</td><td>1-0</td></tr> </table> <p>DOWN TO THE WIRE</p> <table border="1"> <tr><td>Leading with 5:00 left.....</td><td>9-0</td></tr> <tr><td>Trailing with 5:00 left.....</td><td>1-8</td></tr> <tr><td>Tied with 5:00 left.....</td><td>1-0</td></tr> </table> <p>LAYING IT ON THE LINE...</p> <table border="1"> <tr><td>W&M attempts more free throws.....</td><td>4-1</td></tr> <tr><td>Opp. attempts more free throws.....</td><td>6-6</td></tr> <tr><td>Free Throws are even.....</td><td>1-1</td></tr> </table> <p>JERSEY COLOR</p> <table border="1"> <tr><td>White.....</td><td>5-3</td></tr> <tr><td>Green.....</td><td>4-3</td></tr> <tr><td>Gold.....</td><td>2-2</td></tr> <tr><td>Pink.....</td><td>0-0</td></tr> </table> <p>STRENGTH OF OPPOSITION</p> <table border="1"> <tr><td>vs. Top 25 teams.....</td><td>0-0</td></tr> <tr><td>vs. teams with a winning record.....</td><td>4-3</td></tr> <tr><td>vs. teams .500 record.....</td><td>1-0</td></tr> <tr><td>vs. teams with a losing record.....</td><td>6-4</td></tr> </table> <p>STREAKING</p> <table border="1"> <tr><td>Coming off of a win.....</td><td>4-7</td></tr> <tr><td>Coming off of a loss.....</td><td>7-0</td></tr> <tr><td>Longest Winning Streak.....</td><td>W3</td></tr> <tr><td>Longest Losing Streak.....</td><td>L1</td></tr> <tr><td>Current Streak.....</td><td>L1</td></tr> </table>		Overall.....	11-8	CAA Games.....	4-4	Leads at halftime.....	11-0	Trails at halftime.....	0-7	Tied at Halftime.....	0-1	Home.....	6-3	Away.....	5-5	Neutral.....	0-0	November.....	3-3	December.....	4-1	January.....	4-3	February.....	0-1	March.....	0-0	W&M scores fewer than 40 pts.....	0-0	W&M scores 40-49.....	0-2	W&M scores 50-59.....	1-3	W&M scores 60-69.....	6-2	W&M scores 70-79.....	2-1	W&M scores 80+.....	2-0	Opp. scores fewer than 40 pts.....	0-0	Opp. scores 40-49.....	3-0	Opp. scores 50-59.....	5-1	Opp. scores 60-69.....	3-2	Opp. scores 70-79.....	0-3	Opp. scores 80+.....	0-2	W&M shoots below 35%.....	0-3	W&M shoots better than 35%.....	11-5	W&M shoots better than 40%.....	8-2	W&M shoots better than 45%.....	9-1	W&M shoots better than 50%.....	1-0	1-3 points.....	0-0	4-7 points.....	4-1	8-10 points.....	1-0	11-15 points.....	4-5	16+ points.....	2-2	In Overtime.....	0-0	Outrebounding opponent.....	3-0	Outrebounded by opponent.....	7-8	Rebounds are even.....	1-0	Leading with 5:00 left.....	9-0	Trailing with 5:00 left.....	1-8	Tied with 5:00 left.....	1-0	W&M attempts more free throws.....	4-1	Opp. attempts more free throws.....	6-6	Free Throws are even.....	1-1	White.....	5-3	Green.....	4-3	Gold.....	2-2	Pink.....	0-0	vs. Top 25 teams.....	0-0	vs. teams with a winning record.....	4-3	vs. teams .500 record.....	1-0	vs. teams with a losing record.....	6-4	Coming off of a win.....	4-7	Coming off of a loss.....	7-0	Longest Winning Streak.....	W3	Longest Losing Streak.....	L1	Current Streak.....	L1	<p>30 VICTORIA REYNOLDS Jr. • F • 5-10 Fairfax, Va./Archbishop Spalding</p> <table border="1"> <thead> <tr> <th>G-GS</th> <th>PPG</th> <th>RPG</th> <th>APG</th> <th>FG%</th> <th>3P%</th> <th>FT%</th> <th>STL</th> <th>BLK</th> </tr> </thead> <tbody> <tr> <td>19-16</td> <td>10.2</td> <td>5.7</td> <td>2.1</td> <td>.476</td> <td>.471</td> <td>.796</td> <td>27</td> <td>13</td> </tr> </tbody> </table> <ul style="list-style-type: none"> Recorded a double-double with 15 points and 15 rebounds against ECU (11/27/18). Notched a season-high 17 points with 7 reb vs. UNCW (1/11). Scored 14 points and matched a career-high with two 3-pointers against UofR (12/5/18). Poured in a career-high 22 points in the win at St. Francis (12/2/17). Grabbed 18 boards in the win against Charleston (1/26/18). 										G-GS	PPG	RPG	APG	FG%	3P%	FT%	STL	BLK	19-16	10.2	5.7	2.1	.476	.471	.796	27	13																																																																																														
Overall.....	11-8																																																																																																																																																																																																																																														
CAA Games.....	4-4																																																																																																																																																																																																																																														
Leads at halftime.....	11-0																																																																																																																																																																																																																																														
Trails at halftime.....	0-7																																																																																																																																																																																																																																														
Tied at Halftime.....	0-1																																																																																																																																																																																																																																														
Home.....	6-3																																																																																																																																																																																																																																														
Away.....	5-5																																																																																																																																																																																																																																														
Neutral.....	0-0																																																																																																																																																																																																																																														
November.....	3-3																																																																																																																																																																																																																																														
December.....	4-1																																																																																																																																																																																																																																														
January.....	4-3																																																																																																																																																																																																																																														
February.....	0-1																																																																																																																																																																																																																																														
March.....	0-0																																																																																																																																																																																																																																														
W&M scores fewer than 40 pts.....	0-0																																																																																																																																																																																																																																														
W&M scores 40-49.....	0-2																																																																																																																																																																																																																																														
W&M scores 50-59.....	1-3																																																																																																																																																																																																																																														
W&M scores 60-69.....	6-2																																																																																																																																																																																																																																														
W&M scores 70-79.....	2-1																																																																																																																																																																																																																																														
W&M scores 80+.....	2-0																																																																																																																																																																																																																																														
Opp. scores fewer than 40 pts.....	0-0																																																																																																																																																																																																																																														
Opp. scores 40-49.....	3-0																																																																																																																																																																																																																																														
Opp. scores 50-59.....	5-1																																																																																																																																																																																																																																														
Opp. scores 60-69.....	3-2																																																																																																																																																																																																																																														
Opp. scores 70-79.....	0-3																																																																																																																																																																																																																																														
Opp. scores 80+.....	0-2																																																																																																																																																																																																																																														
W&M shoots below 35%.....	0-3																																																																																																																																																																																																																																														
W&M shoots better than 35%.....	11-5																																																																																																																																																																																																																																														
W&M shoots better than 40%.....	8-2																																																																																																																																																																																																																																														
W&M shoots better than 45%.....	9-1																																																																																																																																																																																																																																														
W&M shoots better than 50%.....	1-0																																																																																																																																																																																																																																														
1-3 points.....	0-0																																																																																																																																																																																																																																														
4-7 points.....	4-1																																																																																																																																																																																																																																														
8-10 points.....	1-0																																																																																																																																																																																																																																														
11-15 points.....	4-5																																																																																																																																																																																																																																														
16+ points.....	2-2																																																																																																																																																																																																																																														
In Overtime.....	0-0																																																																																																																																																																																																																																														
Outrebounding opponent.....	3-0																																																																																																																																																																																																																																														
Outrebounded by opponent.....	7-8																																																																																																																																																																																																																																														
Rebounds are even.....	1-0																																																																																																																																																																																																																																														
Leading with 5:00 left.....	9-0																																																																																																																																																																																																																																														
Trailing with 5:00 left.....	1-8																																																																																																																																																																																																																																														
Tied with 5:00 left.....	1-0																																																																																																																																																																																																																																														
W&M attempts more free throws.....	4-1																																																																																																																																																																																																																																														
Opp. attempts more free throws.....	6-6																																																																																																																																																																																																																																														
Free Throws are even.....	1-1																																																																																																																																																																																																																																														
White.....	5-3																																																																																																																																																																																																																																														
Green.....	4-3																																																																																																																																																																																																																																														
Gold.....	2-2																																																																																																																																																																																																																																														
Pink.....	0-0																																																																																																																																																																																																																																														
vs. Top 25 teams.....	0-0																																																																																																																																																																																																																																														
vs. teams with a winning record.....	4-3																																																																																																																																																																																																																																														
vs. teams .500 record.....	1-0																																																																																																																																																																																																																																														
vs. teams with a losing record.....	6-4																																																																																																																																																																																																																																														
Coming off of a win.....	4-7																																																																																																																																																																																																																																														
Coming off of a loss.....	7-0																																																																																																																																																																																																																																														
Longest Winning Streak.....	W3																																																																																																																																																																																																																																														
Longest Losing Streak.....	L1																																																																																																																																																																																																																																														
Current Streak.....	L1																																																																																																																																																																																																																																														
G-GS	PPG	RPG	APG	FG%	3P%	FT%	STL	BLK																																																																																																																																																																																																																																							
19-16	10.2	5.7	2.1	.476	.471	.796	27	13																																																																																																																																																																																																																																							
<p>RESERVES</p> <table border="1"> <thead> <tr> <th>POS. NO.</th> <th>NAME</th> <th>HT.</th> <th>CL.</th> <th>G-GS</th> <th>PPG</th> <th>RPG</th> <th>APG</th> <th>FG%</th> <th>3P%</th> <th>FT%</th> <th>MISC.</th> </tr> </thead> <tbody> <tr> <td>G 0</td> <td>Libby Underwood</td> <td>5-9</td> <td>So.</td> <td>11-0</td> <td>0.9</td> <td>0.3</td> <td>0.2</td> <td>.333</td> <td>.000</td> <td>.500</td> <td>1 stl</td> </tr> <tr> <td colspan="12">NOTE: Scored six points in the second half of the game versus VCU (11/6).</td> </tr> <tr> <td>G 1</td> <td>Sydney Wagner</td> <td>5-6</td> <td>So.</td> <td>-</td> <td>-</td> <td>-</td> <td>-</td> <td>-</td> <td>-</td> <td>-</td> <td>-</td> </tr> <tr> <td colspan="12">NOTE: Transfer from Stetson that has to sit out the 2018-19 season due to NCAA Transfer Rule</td> </tr> <tr> <td>G 3</td> <td>Ashley Taylor</td> <td>5-8</td> <td>Jr.</td> <td>4-0</td> <td>0.3</td> <td>0.0</td> <td>0.0</td> <td>.000</td> <td>.000</td> <td>.500</td> <td>-</td> </tr> <tr> <td colspan="12">NOTE: Has appeared in 24 career games in career.</td> </tr> <tr> <td>G/F 5</td> <td>Misha Jones</td> <td>5-9</td> <td>Sr.</td> <td>19-3</td> <td>4.3</td> <td>2.2</td> <td>1.2</td> <td>.446</td> <td>.425</td> <td>.875</td> <td>3 stl</td> </tr> <tr> <td colspan="12">NOTE: Matched a career-high with nine points vs. UNCW (1/11)</td> </tr> <tr> <td>G 12</td> <td>Harper Birdsong</td> <td>5-10</td> <td>R-So.</td> <td>19-4</td> <td>10.3</td> <td>1.7</td> <td>1.1</td> <td>.398</td> <td>.380</td> <td>.727</td> <td>13 stl</td> </tr> <tr> <td colspan="12">NOTE: First player off of the bench; Scored a career-high 18 at ODU (12/5).</td> </tr> <tr> <td>F 15</td> <td>Emma Krause</td> <td>6-2</td> <td>Fr.</td> <td>19-2</td> <td>4.5</td> <td>2.2</td> <td>0.6</td> <td>.349</td> <td>.339</td> <td>.545</td> <td>10 blk</td> </tr> <tr> <td colspan="12">NOTE: Had 14 points in the win against Howard (11/12); Had nine against Elon (1/20).</td> </tr> <tr> <td>C 20</td> <td>Chandler Smith</td> <td>6-3</td> <td>Sr.</td> <td>9-0</td> <td>0.1</td> <td>0.9</td> <td>0.1</td> <td>.000</td> <td>-</td> <td>.500</td> <td>3 blk</td> </tr> <tr> <td colspan="12">NOTE: Named a team captain for 18-19; Reserve post that has appeared in 60 career games.</td> </tr> <tr> <td>G/F 21</td> <td>Bailey Eichner</td> <td>6-1</td> <td>So.</td> <td>12-0</td> <td>0.3</td> <td>1.3</td> <td>0.2</td> <td>.111</td> <td>.000</td> <td>.500</td> <td>3 stl</td> </tr> <tr> <td colspan="12">NOTE: Had a career-high six rebounds at ODU (12/5)</td> </tr> <tr> <td>C 32</td> <td>Caroline Stover</td> <td>6-3</td> <td>Fr.</td> <td>2-0</td> <td>0.0</td> <td>0.0</td> <td>0.0</td> <td>.000</td> <td>.000</td> <td>.000</td> <td>-</td> </tr> <tr> <td colspan="12">NOTE: Ranked as the No. 131 recruit in her class on BlueStar</td> </tr> </tbody> </table>												POS. NO.	NAME	HT.	CL.	G-GS	PPG	RPG	APG	FG%	3P%	FT%	MISC.	G 0	Libby Underwood	5-9	So.	11-0	0.9	0.3	0.2	.333	.000	.500	1 stl	NOTE: Scored six points in the second half of the game versus VCU (11/6).												G 1	Sydney Wagner	5-6	So.	-	-	-	-	-	-	-	-	NOTE: Transfer from Stetson that has to sit out the 2018-19 season due to NCAA Transfer Rule												G 3	Ashley Taylor	5-8	Jr.	4-0	0.3	0.0	0.0	.000	.000	.500	-	NOTE: Has appeared in 24 career games in career.												G/F 5	Misha Jones	5-9	Sr.	19-3	4.3	2.2	1.2	.446	.425	.875	3 stl	NOTE: Matched a career-high with nine points vs. UNCW (1/11)												G 12	Harper Birdsong	5-10	R-So.	19-4	10.3	1.7	1.1	.398	.380	.727	13 stl	NOTE: First player off of the bench; Scored a career-high 18 at ODU (12/5).												F 15	Emma Krause	6-2	Fr.	19-2	4.5	2.2	0.6	.349	.339	.545	10 blk	NOTE: Had 14 points in the win against Howard (11/12); Had nine against Elon (1/20).												C 20	Chandler Smith	6-3	Sr.	9-0	0.1	0.9	0.1	.000	-	.500	3 blk	NOTE: Named a team captain for 18-19; Reserve post that has appeared in 60 career games.												G/F 21	Bailey Eichner	6-1	So.	12-0	0.3	1.3	0.2	.111	.000	.500	3 stl	NOTE: Had a career-high six rebounds at ODU (12/5)												C 32	Caroline Stover	6-3	Fr.	2-0	0.0	0.0	0.0	.000	.000	.000	-	NOTE: Ranked as the No. 131 recruit in her class on BlueStar											
POS. NO.	NAME	HT.	CL.	G-GS	PPG	RPG	APG	FG%	3P%	FT%	MISC.																																																																																																																																																																																																																																				
G 0	Libby Underwood	5-9	So.	11-0	0.9	0.3	0.2	.333	.000	.500	1 stl																																																																																																																																																																																																																																				
NOTE: Scored six points in the second half of the game versus VCU (11/6).																																																																																																																																																																																																																																															
G 1	Sydney Wagner	5-6	So.	-	-	-	-	-	-	-	-																																																																																																																																																																																																																																				
NOTE: Transfer from Stetson that has to sit out the 2018-19 season due to NCAA Transfer Rule																																																																																																																																																																																																																																															
G 3	Ashley Taylor	5-8	Jr.	4-0	0.3	0.0	0.0	.000	.000	.500	-																																																																																																																																																																																																																																				
NOTE: Has appeared in 24 career games in career.																																																																																																																																																																																																																																															
G/F 5	Misha Jones	5-9	Sr.	19-3	4.3	2.2	1.2	.446	.425	.875	3 stl																																																																																																																																																																																																																																				
NOTE: Matched a career-high with nine points vs. UNCW (1/11)																																																																																																																																																																																																																																															
G 12	Harper Birdsong	5-10	R-So.	19-4	10.3	1.7	1.1	.398	.380	.727	13 stl																																																																																																																																																																																																																																				
NOTE: First player off of the bench; Scored a career-high 18 at ODU (12/5).																																																																																																																																																																																																																																															
F 15	Emma Krause	6-2	Fr.	19-2	4.5	2.2	0.6	.349	.339	.545	10 blk																																																																																																																																																																																																																																				
NOTE: Had 14 points in the win against Howard (11/12); Had nine against Elon (1/20).																																																																																																																																																																																																																																															
C 20	Chandler Smith	6-3	Sr.	9-0	0.1	0.9	0.1	.000	-	.500	3 blk																																																																																																																																																																																																																																				
NOTE: Named a team captain for 18-19; Reserve post that has appeared in 60 career games.																																																																																																																																																																																																																																															
G/F 21	Bailey Eichner	6-1	So.	12-0	0.3	1.3	0.2	.111	.000	.500	3 stl																																																																																																																																																																																																																																				
NOTE: Had a career-high six rebounds at ODU (12/5)																																																																																																																																																																																																																																															
C 32	Caroline Stover	6-3	Fr.	2-0	0.0	0.0	0.0	.000	.000	.000	-																																																																																																																																																																																																																																				
NOTE: Ranked as the No. 131 recruit in her class on BlueStar																																																																																																																																																																																																																																															
<p>W&M INDIVIDUAL SUPERLATIVES</p> <table border="1"> <thead> <tr> <th>Double-Digt Games</th> <th>16-17</th> <th>17-18</th> <th>18-19</th> <th>Career</th> <th>10-Assist Games</th> <th>16-17</th> <th>17-18</th> <th>18-19</th> <th>Career</th> </tr> </thead> <tbody> <tr> <td>Bianca Boggs</td> <td>8</td> <td>25</td> <td>16</td> <td>58</td> <td>Bianca Boggs</td> <td>-</td> <td>1</td> <td>3</td> <td>5</td> </tr> <tr> <td>Victoria Reynolds</td> <td>4</td> <td>15</td> <td>12</td> <td>31</td> <td>Victoria Reynolds</td> <td>-</td> <td>1</td> <td>1</td> <td>2</td> </tr> <tr> <td>Harper Birdsong</td> <td>-</td> <td>-</td> <td>12</td> <td>12</td> <td>Nyla Pollard</td> <td>-</td> <td>-</td> <td>1</td> <td>1</td> </tr> <tr> <td>Eva Hodgson</td> <td>-</td> <td>-</td> <td>9</td> <td>9</td> <td>Emma Krause</td> <td>-</td> <td>-</td> <td>2</td> <td>2</td> </tr> <tr> <td>Nyla Pollard</td> <td>-</td> <td>3</td> <td>1</td> <td>4</td> <td>Gabby Rogers</td> <td>-</td> <td>-</td> <td>1</td> <td>1</td> </tr> <tr> <td>Emma Krause</td> <td>-</td> <td>-</td> <td>2</td> <td>2</td> <td></td> <td></td> <td></td> <td></td> <td></td> </tr> <tr> <td>Gabby Rogers</td> <td>-</td> <td>-</td> <td>1</td> <td>1</td> <td></td> <td></td> <td></td> <td></td> <td></td> </tr> </tbody> </table> <table border="1"> <thead> <tr> <th>20-Point Games</th> <th>16-17</th> <th>17-18</th> <th>18-19</th> <th>Career</th> <th>Leading Scorer (times):</th> </tr> </thead> <tbody> <tr> <td>Bianca Boggs</td> <td>-</td> <td>7</td> <td>7</td> <td>14</td> <td>- Boggs (12), Birdsong (3), Hodgson (3), Reynolds (2)</td> </tr> <tr> <td>Victoria Reynolds</td> <td>-</td> <td>1</td> <td>-</td> <td>1</td> <td></td> </tr> </tbody> </table> <table border="1"> <thead> <tr> <th>30-Point Games</th> <th>16-17</th> <th>17-18</th> <th>18-19</th> <th>Career</th> <th>Leading Rebounder (times):</th> </tr> </thead> <tbody> <tr> <td>Bianca Boggs</td> <td>-</td> <td>1</td> <td>-</td> <td>1</td> <td>- Reynolds (9), Boggs (8), Eichner (1), Hodgson (1), Jones (1), Pollard (1), Rogers (1)</td> </tr> </tbody> </table> <table border="1"> <thead> <tr> <th>10-Rebound Games</th> <th>16-17</th> <th>17-18</th> <th>18-19</th> <th>Career</th> <th>Leading Assists (times):</th> </tr> </thead> <tbody> <tr> <td>Victoria Reynolds</td> <td>-</td> <td>4</td> <td>3</td> <td>7</td> <td>- Boggs (10), Hodgson (7), Pollard (4), Reynolds (2), Birdsong (1), Jones (1)</td> </tr> <tr> <td>Bianca Boggs</td> <td>1</td> <td>1</td> <td>4</td> <td>6</td> <td></td> </tr> </tbody> </table> <table border="1"> <thead> <tr> <th>Charges (times):</th> <th>16-17</th> <th>17-18</th> <th>18-19</th> <th>Career</th> </tr> </thead> <tbody> <tr> <td>- Jones (13), Rogers (6), Eichner (6), Hodgson (5), Birdsong (1)</td> <td></td> <td></td> <td></td> <td></td> </tr> </tbody> </table> <table border="1"> <thead> <tr> <th>Three-Point Plays (Made/Attempted):</th> <th>16-17</th> <th>17-18</th> <th>18-19</th> <th>Career</th> </tr> </thead> <tbody> <tr> <td>- Birdsong (3/3), Hodgson (1/1), Jones (1/1), Krause (1/1), Rogers (1/1), Boggs (14/16), Reynolds (1/2), Pollard (0/2)</td> <td></td> <td></td> <td></td> <td></td> </tr> </tbody> </table> <table border="1"> <thead> <tr> <th>Four-Point Plays (Made/Attempted):</th> <th>16-17</th> <th>17-18</th> <th>18-19</th> <th>Career</th> </tr> </thead> <tbody> <tr> <td>- Jones (1/1)</td> <td></td> <td></td> <td></td> <td></td> </tr> </tbody> </table>												Double-Digt Games	16-17	17-18	18-19	Career	10-Assist Games	16-17	17-18	18-19	Career	Bianca Boggs	8	25	16	58	Bianca Boggs	-	1	3	5	Victoria Reynolds	4	15	12	31	Victoria Reynolds	-	1	1	2	Harper Birdsong	-	-	12	12	Nyla Pollard	-	-	1	1	Eva Hodgson	-	-	9	9	Emma Krause	-	-	2	2	Nyla Pollard	-	3	1	4	Gabby Rogers	-	-	1	1	Emma Krause	-	-	2	2						Gabby Rogers	-	-	1	1						20-Point Games	16-17	17-18	18-19	Career	Leading Scorer (times):	Bianca Boggs	-	7	7	14	- Boggs (12), Birdsong (3), Hodgson (3), Reynolds (2)	Victoria Reynolds	-	1	-	1		30-Point Games	16-17	17-18	18-19	Career	Leading Rebounder (times):	Bianca Boggs	-	1	-	1	- Reynolds (9), Boggs (8), Eichner (1), Hodgson (1), Jones (1), Pollard (1), Rogers (1)	10-Rebound Games	16-17	17-18	18-19	Career	Leading Assists (times):	Victoria Reynolds	-	4	3	7	- Boggs (10), Hodgson (7), Pollard (4), Reynolds (2), Birdsong (1), Jones (1)	Bianca Boggs	1	1	4	6		Charges (times):	16-17	17-18	18-19	Career	- Jones (13), Rogers (6), Eichner (6), Hodgson (5), Birdsong (1)					Three-Point Plays (Made/Attempted):	16-17	17-18	18-19	Career	- Birdsong (3/3), Hodgson (1/1), Jones (1/1), Krause (1/1), Rogers (1/1), Boggs (14/16), Reynolds (1/2), Pollard (0/2)					Four-Point Plays (Made/Attempted):	16-17	17-18	18-19	Career	- Jones (1/1)																																																																										
Double-Digt Games	16-17	17-18	18-19	Career	10-Assist Games	16-17	17-18	18-19	Career																																																																																																																																																																																																																																						
Bianca Boggs	8	25	16	58	Bianca Boggs	-	1	3	5																																																																																																																																																																																																																																						
Victoria Reynolds	4	15	12	31	Victoria Reynolds	-	1	1	2																																																																																																																																																																																																																																						
Harper Birdsong	-	-	12	12	Nyla Pollard	-	-	1	1																																																																																																																																																																																																																																						
Eva Hodgson	-	-	9	9	Emma Krause	-	-	2	2																																																																																																																																																																																																																																						
Nyla Pollard	-	3	1	4	Gabby Rogers	-	-	1	1																																																																																																																																																																																																																																						
Emma Krause	-	-	2	2																																																																																																																																																																																																																																											
Gabby Rogers	-	-	1	1																																																																																																																																																																																																																																											
20-Point Games	16-17	17-18	18-19	Career	Leading Scorer (times):																																																																																																																																																																																																																																										
Bianca Boggs	-	7	7	14	- Boggs (12), Birdsong (3), Hodgson (3), Reynolds (2)																																																																																																																																																																																																																																										
Victoria Reynolds	-	1	-	1																																																																																																																																																																																																																																											
30-Point Games	16-17	17-18	18-19	Career	Leading Rebounder (times):																																																																																																																																																																																																																																										
Bianca Boggs	-	1	-	1	- Reynolds (9), Boggs (8), Eichner (1), Hodgson (1), Jones (1), Pollard (1), Rogers (1)																																																																																																																																																																																																																																										
10-Rebound Games	16-17	17-18	18-19	Career	Leading Assists (times):																																																																																																																																																																																																																																										
Victoria Reynolds	-	4	3	7	- Boggs (10), Hodgson (7), Pollard (4), Reynolds (2), Birdsong (1), Jones (1)																																																																																																																																																																																																																																										
Bianca Boggs	1	1	4	6																																																																																																																																																																																																																																											
Charges (times):	16-17	17-18	18-19	Career																																																																																																																																																																																																																																											
- Jones (13), Rogers (6), Eichner (6), Hodgson (5), Birdsong (1)																																																																																																																																																																																																																																															
Three-Point Plays (Made/Attempted):	16-17	17-18	18-19	Career																																																																																																																																																																																																																																											
- Birdsong (3/3), Hodgson (1/1), Jones (1/1), Krause (1/1), Rogers (1/1), Boggs (14/16), Reynolds (1/2), Pollard (0/2)																																																																																																																																																																																																																																															
Four-Point Plays (Made/Attempted):	16-17	17-18	18-19	Career																																																																																																																																																																																																																																											
- Jones (1/1)																																																																																																																																																																																																																																															



Team

W&M scored 80+ points	1/27/2019	80 (80-69, W at Towson)
W&M scored 85+ points	11/12/2018	88 (88-75, W vs. Howard)
W&M scored 90+ points	12/2/2017	92 (92-86, W at St. Francis (Pa.))
W&M scored 95+ points	2/16/2014	97 (97-44 W, vs. UNCW)
Opponent scored 80+	1/6/2019	88 (74-88, L at Northeastern)
Opponent scored 85+	2/2/2017	86 (41-86, L vs. James Madison)
Opponent scored 90+	11/17/2017	92 (92-81 L, at St. John's)
W&M grabbed 50+ rebounds	11/27/2018	58 (63-43 W, vs. East Carolina)
W&M grabbed 60+ rebounds	12/21/2006	60 (73-58 W, at Norfolk State)
Held an Opponent to 50 pts. or less	12/21/2018	44 (55-44, W at Norfolk State)
Held an Opponent to 40 pts. or less	12/3/2016	39 (67-39, W vs. Richmond)
W&M was held under 50 pts.	1/25/2019	48 (48-65 L, at James Madison)
Shot 50% from the field	11/17/2018	51.0% (26-for-51) (65-49, W at Loyola)
Shot 80-89% from the foul line (8 or more attempts)	2/1/2019	81.3% (13-for-16) (59-70, L vs. Delaware)
Shot 90-99% from the foul line (8 or more attempts)	2/9/2018	90.0 (9-for-10) (59-68, L at Delaware)
Shot 100% from the foul line (8 or more attempts)	1/25/2019	100% (16-for-16) (48-65, L at James Madison)
Had a 20-pt. win	11/27/2018	20 (63-43 W, vs. East Carolina)
Had a 30-pt. win	11/28/2016	34 (W, 82-48 vs. Delaware State)
Had a 40-pt. win	2/16/2014	53 (97-44 W, vs. UNCW)
Had a 50-pt. win	2/16/2014	53 (97-44 W, vs. UNCW)
Had a 20-pt. loss	3/1/2018	21 (L, 61-82 at Elon)
Had a 30-pt. loss	2/2/2018	45 (L, 41-86 vs. James Madison)
An overtime win	11/21/2017	71-65, W at East Carolina
An overtime loss	1/9/2018	58-65, L vs. Drexel
A double-overtime game	2/6/2015	72-68, W at Drexel
A triple-overtime game	11/29/1999	77-83, L at VCU
10-game winning streak	2016-17	11 (11/18/2016-1/6/17)
5-game winning streak	2017-18	7 (11/21/2017-12/21/2017)
5-game losing streak	2017-18	7 (2/16/2018-11/12/2018)
10-game losing streak	2012-13	11 (11/25/2012-1/20/2013)

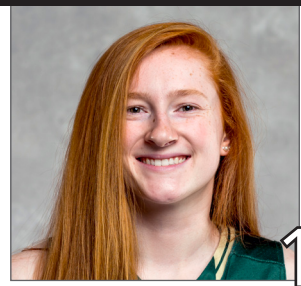
Individual

20-24 pts.	22, Bianca Boggs at Towson, 1/27/19
25-29 pts.	25, Bianca Boggs vs. UNCW, 1/11/19
30-34 pts.	33, Bianca Boggs at St. Francis (Pa.), 12/2/17
35-39 pts.	39, Lynn Norenberg at Virginia Wesleyan, 11/15/80
40+ pts.	53, Bebe Fisher vs. Norfolk Division, 2/13/52
5 players in double figures	Bianca Boggs (26), Victoria Reynolds (15), Abby Rendle (12), Nari Garner (11), Jenna Green (10) vs. College of Charleston, 1/26/18
Two players with 20 pts. or more	Jenna Green (22) and Bianca Boggs (21) at Towson, 2/4/18
Player with 10-14 rebounds	11, Bianca Boggs at James Madison, 1/25/19
Player with 15-19 rebounds	15, Victoria Reynolds vs. East Carolina, 11/27/18
Player with 20 or more rebounds	21, Emily Correal vs. George Mason, 3/16/13
Two players with 10 or more rebounds	15, Victoria Reynolds, 12, Nyla Pollard, & 11 Bianca Boggs vs. ECU, 11/27/18
A player with a triple-double	Abby Rendle (25 pts, 17 reb, 10 blks) at East Carolina, 11/21/17
A player with a double-double	Bianca Boggs (22 pts, 10 reb) at Hofstra, 1/4/19
Two players with double-doubles	Victoria Reynolds (15 pts, 15 reb) & Nyla Pollard (10 pts, 12 reb.) vs. ECU, 11/27/18
100% from the field (min. 5 made)	7-for-7, Abby Rendle vs. Drexel, 3/1/17
100% from foul line (min. 5 made)	6-for-6, Misha Jones at Towson, 1/27/19
5-7 Assists	5, Bianca Boggs vs. Delaware, 2/1/19
8-9 Assists	8, Bianca Boggs at Delaware, 2/9/18
10+ Assists	11, Jenna Green vs. College of Charleston, 1/26/18
5 or more steals	6, Bianca Boggs at Hartford, 11/30/18
5-9 blocks	6, Abby Rendle at Delaware, 2/9/18
10+ blocks	11, Abby Rendle vs. College of Charleston, 1/26/18

BOLD - Happened in the 2018-19 season



LIBBY UNDERWOOD
So. • Guard • 5-9
Rye, New Hampshire



SYDNEY WAGNER
So. • Guard • 5-6
Phoenixville, Pa.



BIANCA BOGGS
Sr. • Guard • 5-5
Waldorf, Md.



ASHLEY TAYLOR
Jr. • Guard • 6-0
Charlottesville, Va.



MISHA JONES
Sr. • Guard/Forward • 5-9
Manassas Park, Va.



EVA HODGSON
Fr. • Guard • 5-9
Rindge, New Hampshire



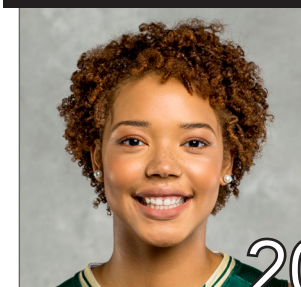
NYLIA POLLARD
So. • Guard • 5-9
Virginia Beach, Va.



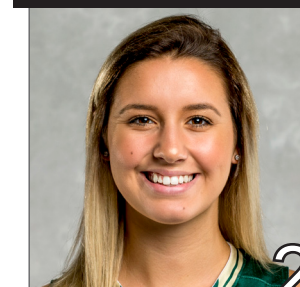
HARPER BIRDSONG
R-So. • Guard • 5-10
Suffolk, Va.



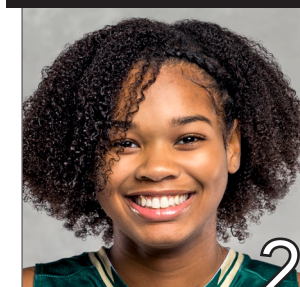
EMMA KRUSE
Jr. • Center • 6-3
Port Tobacco, Md.



CHANDLER SMITH
Sr. • Center • 6-3
Port Tobacco, Md.



BAILEY EICHNER
So. • Guard/Forward • 6-1
Cudahy, Wisc.



GABBY ROGERS
Fr. • Center • 6-1
Dallas, Texas



VICTORIA REYNOLDS
Jr. • Forward • 5-10
Fairfax, Va.



CAROLINE STOVER
Fr. • Center • 6-3
Plympton Mass.



ED SWANSON
Sixth Season at W&M
29th Overall

PRONUNCIATION GUIDE

Bailey **EICHNER** IKE-ner

Lynne **KOKOSKI**
Kah-kaw-ski

CHANEL Murchison Shh-nell



ED

SWANSON

Ed Swanson enters his sixth season with the Green and Gold. He became the fifth Division I head women's basketball coach in William and Mary history on May 7, 2013. Prior to coming to Williamsburg, he spent 23 years transforming Sacred Heart University from a Division II program into a one of the top teams in the Northeast Conference. Swanson owns a career record of 464-327 (.587).

HEAD COACH

29TH SEASON OVERALL

6TH SEASON AT W&M

PROFILE

Wife: Marion
Children: Connor and Matthew

Education
Sacred Heart, 1989

Coaching Career
Sacred Heart (1989-13)
William & Mary (2013-P)

CAREER HIGHLIGHTS

- Three NCAA Tournament Appearances
- Led W&M to 1st Division I Postseason berth in the WBI.
- Led W&M to a school record 20 wins in 2016-17
- 2016-17 VaSID Coach of the Year
- Six Postseason Appearances
- Four regular season conference championships and three postseason league titles
- 2009 New England Hall of Fame Inductee
- Eight 20-win seasons
- Five-time Conference Coach of the Year
- On five occasions, his teams have earned to the WBCA Academic Top 25 Team Honor

The success continued for the Tribe during the 2017-18 season. W&M won 16 games, which is tied for the fourth most in school history, and posted its second straight winning season for the first time since 2005-06 and 2006-07. His first recruiting class became the winningest class in school history with the team's victory over College of Charleston on Jan. 26. The seniors went onto win 66 games during their four year career. The Tribe raced out to an 11-2 start for the third straight season, which equaled the best 13-game start in school history, and led the CAA in blocked shots (218) and blocked shots per game (7.3), which ranked fourth and third in the NCAA, respectively. Both numbers are single-season school records. Individually, he mentored three players to five All-CAA awards, including All-CAA First-Team selection Bianca Boggs, who became the first Tribe player in a decade to be named to the league's first-team. Additionally, Boggs was named to the league's all-defensive team, while Abby Rendle claimed a spot on the All-CAA Third-Team, and All-Defensive Team, and freshman Nyla Pollard was picked to the CAA All-Rookie team.

Swanson led the Tribe to one of its best seasons in program history in 2016-17. The Tribe tied a school record with 20 wins, while winning a CAA Tournament game for the first time since 2009, and advancing to the CAA Semifinals for the first-time since 2001. Under his leadership, the Tribe won 11-straight games, which is the longest single-23056season streak in school history, from Nov. 18, 2016-Jan. 2, 2017. W&M had four players claim seven all-conference awards this season, including seniors Alexandra Masaquel and Marlena Tremba, who each earned second-team citations. Additionally, Masaquel was tabbed the Richmond Times-Dispatch All-State Second-Team, while Tremba earned VaSID All-State Second-Team honors. For his efforts, VaSID honored him as the Virginia State Coach of the Year.

Once again Swanson's third season was one for the record books. The Tribe raced out to its best start in school history with an 11-2 record. W&M went onto again to win the fourth most wins in school history with 15. For the second straight season the Tribe broke the blocks and assist record, by tying the single season assist record (466) and broke the school record for blocks with 148. During the season junior Marlena Tremba became the 15th player in school history to break the 1000-point barrier. Individually, four players earned All-CAA awards as junior Alexandra Masaquel was tabbed to the second-team and all-defensive team, Tremba eared third-team honors, and freshman Bianca Boggs picked up a spot on the all-rookie team. The Tribe was also rewarded for its hard work in the classroom as Masaquel, Tremba, and sophomore Jenna Green earned all-academic team honors.

Swanson's second year with the Green and Gold was one for the record books. The Tribe racked up 15 wins, the fourth-most in school history, on its way to its first-ever postseason appearances with bid in the Women's Basketball Invitational. The Green and Gold had a seven-win turnaround, while setting three school records for assists (466), blocked shots, (143), blocked shots per game (4.5). Individually he helped lead four players to five All-CAA awards. Sophomore Marlena Tremba was named to the All-CAA Third-Team, senior Jazmen Boone was named to the All-Defensive Team, freshman Abby Rendle to the All-Rookie and All-Defensive team, and senior Kyla Kerstetter earned all-academic honors.

In his first season with the Tribe, Swanson led a young team to eight victories in a seven-seed in the CAA Tournament. The Green and Gold finished in the top 10 nationally in steals per game, while Jazmen Boone also ranked in the top 20 in the NCAA in the same category. Under his guidance Kaitlyn Mathieu garnered Third-Team All-Colonial Athletic Association honors, and went on to sign a professional contract with a team in Germany. In addition, guard Marlena Tremba went onto win CAA Rookie of the Year, and was named to the all-rookie squad. Boone was named to the all-defensive team, while she and Kyla Kerstetter took home all-academic honors.

Swanson oversaw Sacred Heart's transition from Division II to Division I in 1999-00, and the program took off under his direction. Over Sacred Heart's 14 years in Division I, Swanson led SHU



to a 280-145 record (.664), including a 190-62 (.754) record in the NEC. He departed as the NEC's all-time winningest head coach with all of his SHU teams finishing third or higher in the league standings. Swanson-lead teams have posted 13 straight winning seasons and 12 straight campaigns with 18 or more victories, including six with 20 or more wins. In 2009, he was inducted into the New England Basketball Hall of Fame.

In total, Swanson-coached players earned 19 All-NEC honors, including nine first-team awards, nine NEC All-Tournament Team honors, eight NEC All-Rookie Team selections, four NEC Rookies of the Year, three NEC Tournament MVPs and three NEC Players of the Year.

His teams have also enjoyed success in the classroom. On five occasions, the Pioneers were selected to the Women's Basketball Coaches Association (WBCA) Academic Top 25 Team Honor Roll, which has recognized outstanding academic performances from the top teams in each of the five collegiate divisions since 1995-96. On eight occasions since 2003, one of his players was a CoSIDA Academic All-District selection and two Pioneer players were named NEC Scholar-Athlete of the Year.

In 2012-13, Swanson led Sacred Heart to its third straight postseason appearance, and in the process, recorded his 400th career victory. His milestone win came on Feb. 12, 2013 as the Pioneers defeated Fairleigh Dickinson. SHU completed the season at 22-11, finishing second in the NEC with a 13-5 ledger and garnering a berth in the program's first Women's National Invitational Tournament (WNIT).

Sacred Heart claimed its third NEC Championship and advanced to the NCAA Tournament in 2011-12. The Pioneers also ranked 23rd nationally in the WBCA Academic Top 25 Team Honor Roll with a team GPA of 3.35. SHU compiled a season mark to 25-8, winning both the regular season and postseason crowns in the league as Swanson was named NEC Coach of the Year for the fourth time.

The Pioneers earned a berth in the 2011 Women's Basketball Invitational and finished the year at 18-13 with a 12-6 mark in the NEC. After a 0-5 start to the 2008-09 season, Swanson's Pioneers reeled off a 21-game winning streak, the longest in school history and second longest in the country, before finishing with 25-8 record. SHU completed the NEC regular season with a perfect 18-0 mark, becoming just the third team in the history of the conference to accomplish the feat. Swanson earned NEC Coach of the Year honors as Sacred Heart finished off an amazing season by capturing its second league title and trip to the NCAA Tournament over a four-year span. During the 2008-09 season, Swanson moved past former Mount St. Mary's head coach Bill Sheahan (124) as all-time leader in Northeast Conference wins and eclipsing the 300-win plateau in his career.

The 2005-06 season saw Swanson lead the Sacred Heart program to its first NCAA Tournament, capturing the NEC Championship in just its seventh season at the Division I level. Swanson guided the Pioneers to a school record 26-5 record, including a 16-2 NEC ledger. He also garnered career victory No. 250 during the season.

Under his leadership, Sacred Heart was one of the toughest teams on its home court, the William H. Pitt Center, which opened in 1997. During the Pitt Center's opening 16 seasons, Swanson's teams won 81.9 percent (185-41) of its home games. In 2011-12, SHU went 15-1 at home, a season bested only by a perfect 15-0 in 2005-06 and 14-0 in 2003-04. During the stretch, the Pioneers' home winning percentage at the Pitt Center ranked among the best nationally.

After directing the Pioneers to a 20-7 record — the program's first 20-win season — in 1995-96, Swanson was voted Coach of the Year in the New England Collegiate Conference (NECC) and the Women's Basketball Coaches Association's (WBCA) District I.

Swanson took the reins of the Sacred Heart University women's basketball program in 1990 and built the Pioneers into one of the top teams in the Northeast. He joined Dave Bike's men's basketball coaching staff at SHU in 1989, and, after becoming head coach of the Pioneer women's program in 1990, did double duty for three seasons before becoming the University's first full-time women's coach in 1993. Prior to Swanson's arrival,

CAREER RECORD

YEAR	OVERALL RECORD	CONF. RECORD	CONF. FINISH	POST SEASON
1990-91	8-19	3-11	7th	
1991-92	11-16	5-9	T5th	
1992-93	16-13	7-7	4th	
1993-94	12-15	8-8	5th	
1994-95	11-16	7-9	5th	
1995-96	20-7	16-4	T2nd	
1996-97	14-14	10-8	5th	
1997-98	19-7	13-3	2nd	
1998-99	15-12	12-6	3rd	
1999-00	14-14	11-7	T3rd	
2000-01	15-14	11-7	T3rd	
2001-02	18-11	13-5	T2nd	
2002-03	18-10	12-6	T3rd	
2003-04	21-8	14-4	2nd	
2004-05	18-11	14-4	2nd	
2005-06	26-5	16-2	1st	NCAA
2006-07	22-10	15-3	T1st	
2007-08	19-11	14-4	3rd	
2008-09	25-8	18-0	1st	NCAA
2009-10	19-11	14-4	3rd	
2010-11	18-13	12-6	T3rd	WBI
2011-12	25-8	15-3	1st	NCAA WNIT
2012-13	22-11	13-5	2nd	
2013-14	8-21	5-11	8th	
2014-15	15-16	9-9	6th	WBI
2015-16	15-15	6-12	7th	
2016-17	20-11	9-9	4th	
2017-18	16-14	7-11	6th	
2018-19	11-8	4-4		
Career	491-349 (.585)	296-183 (.615)		
Division I	365-230 (.613)	231-118 (.662)		
W&M/CAA	85-85 (.500)	40-56 (.417)		

the Sacred Heart women's team compiled a 4-21 record. Under his guidance, the climb to Division II respectability was accomplished within three seasons, from 8-19 to 11-16 and, in 1992-93, to 16-13 — the program's first winning record in 11 seasons.

In his time at SHU, he was a four-time NEC Coach of the Year, led Sacred Heart to five postseason bids, including three NCAA Tournament appearances. Swanson guided the Pioneers to four NEC regular season crowns and three NEC tournament championships. SHU posted 20-win seasons seven times during his tenure, including five of the last eight years.

He earned a bachelor's degree in business from Sacred Heart in 1989. Also during his tenure at SHU, Swanson served as the moderator for the Pioneer Student-Athlete Council from 1998-01 and was the annual coordinator of commencement exercises since 2000. Swanson and his wife, Marion, have two sons, Connor and Matthew.



#0 LIBBY UNDERWOOD

SOPHOMORE - GUARD

RYE, N.H. - PORTSMOUTH

>> UNDERWOOD'S CAREER HIGHS

MINUTES	Season 13 vs. VCU, 11/6/18	FREE THROWS	Season 1 (2x) last time at NU, 1/6/18
Career 15 vs. USC Upstate, 12/5/17	Career 5 vs. USC Upstate, 12/5/17		
POINTS	Season 6 vs. VCU, 11/6/18	ASSISTS	Season 1 (2x) last time at JMU, 1/25/19
Career 8 vs. USC Upstate, 12/5/17	Career 3 vs. USC Upstate, 12/5/17		
REBOUNDS	Season 2 at James Madison, 1/25/19	STEALS	Season 1 at Old Dominion, 12/8/18
Career 3 at Northeastern, 1/21/18	Career 1 (3x) last time at ODU, 12/8/18		
FIELD GOALS	Season 3 vs. VCU, 11/6/18	BLOCKS	Season 1 vs. VCU, 11/6/18
Career 3 vs. VCU, 11/6/18	Career 1 vs. VCU, 11/6/18		
3-POINT FIELD GOALS	Season -	MISCELLANEOUS	Career in Double Figures 0
Career 1 (3x) last time vs. Upstate 12/5/17	Career 2018-19 in Double Figures 0		

>> 2018-19 GAME-BY-GAME

Opp	Date	GS	Min	FG-A	3FG-A	FTA	Reb.	A	TO	BLK	STL	P	L
VCU	11/6	14	3-4	0-1	0-0	0	1	1	0	1	6		
HOW	11/12	2	0-1	0-0	0-0	1	0	0	0	0	0		
at Loy	11/17	11	0-1	0-0	0-0	0	0	0	0	0	0		
at DC	11/24	6	0-1	0-1	0-0	0	0	0	0	0	0		
ECU	11/27												
at Hart	11/30	2	0-0	0-0	0-0	0	0	0	0	0	0		
at Fair	12/2												
UOFR	12/5	1	1-1	0-0	0-0	0	0	0	0	0	2		
at ODU	12/8	10	0-1	0-0	1-2	0	0	2	0	1	1		
at NSU	12/21	5	0-0	0-0	0-0	0	0	2	0	0	0		
GW	12/28	3	0-0	0-0	0-0	0	0	0	0	0	0		
at Hof	1/4												
at NU	1/6	8	0-1	0-1	1-2	0	0	1	0	0	1		
UNCW	1/11												
COFC	1/13												
ELON	1/20												
at JMU	1/25	2	0-2	0-0	0-0	2	1	0	0	0	0		
at Tow	1/27												
DEL	2/1												

>> UNDERWOOD'S CAREER STATISTICS

Season	GP	GS	Min/Avg	FG-FGA	Pct	3pt-Att	Pct	FT-FTA	Pct	Off	Def	Reb	Avg	PF	FO	A	TO	Blk	S	TP	Avg
2017-18	27	0	162/6.0	6-30	.200	3-15	.200	14-22	.636	2	14	16	0.6	10	0	8	21	0	2	29	1.1
2018-19	11	0	62/5.6	4-12	.333	0-3	.000	2-4	.500	3	0	3	0.3	1	0	2	6	1	1	10	0.9
CAREER	38	0	224/5.9	10-42	.238	3-18	.167	16-26	.615	5	14	19	0.5	11	0	10	27	1	3	39	1.0



#2 BIANCA BOGGS

SENIOR - GUARD

WALDORF, MD. - ST. MARY'S RYKEN

>> BOGGS' CAREER HIGHS

MINUTES	Season 39 (2x) last time vs. CofC, 1/13/19	FREE THROWS	Season 7(2x) last time vs. UNCW, 1/11/19
Career 41 at East Carolina, 11/21/17	Career 8 (2x) last time vs. UD, 2/23/18		
POINTS	Season 26 (2x) last time vs. GW, 12/28/18	ASSISTS	Season 7 (2x) last time at DC, 11/24/18
Career 33 at St. Francis (Pa.), 12/2/17	Career 8 at Delaware, 2/9/18		
REBOUNDS	Season 11 (2x) last time at JMU, 1/25/19	STEALS	Season 6 at Hartford, 11/30/18
Career 11 (3x) last time at JMU, 1/25/19	Career 7 vs. Charleston, 1/26/18		
FIELD GOALS	Season 10 (2x) last time vs. GW, 12/28/18	BLOCKS	Season 3 vs. GW, 12/28/18
Career 12 at St. Francis (Pa.), 12/2/17	Career 4 vs. Hofstra, 1/28/18		
3-POINT FIELD GOALS	Season 4 (2x) last time vs. CofC, 1/13/19	MISCELLANEOUS	Career in Double Figures 58
Career 4 (4x) last time vs. CofC, 1/13/19	Career 2018-19 in Double Figures 16		

>> 2018-19 GAME-BY-GAME

Opp	Date	GS	Min	FG-A	3FG-A	FTA	Reb.	A	TO	BLK	STL	P	L
VCU	11/6	*	34	6-16	1-3	2-3	6	4	3	1	5	16	
HOW	11/12	*	35	10-22	1-5	5-5	9	7	4	0	1	26	
at Loy	11/17	*	35	5-9	2-4	2-2	5	3	1	0	0	14	
at DC	11/24	*	36	6-12	1-3	5-5	10	7	9	2	3	18	
ECU	11/27	*	37	4-11	0-3	1-2	11	5	6	1	1	9	
at Hart	11/30	*	39	3-15	1-5	5-6	6	2	4	0	6	12	
at Fair	12/2	*	37	8-12	2-4	4-8	5	2	7	0	3	22	
UOFR	12/5	*	32	2-7	0-0	1-2	1	6	3	2	2	8	
at ODU	12/8	*	24	7-15	0-3	3-3	3	2	2	0	3	17	
at NSU	12/21	*	33	4-10	0-2	2-5	8	4	6	1	4	10	
GW	12/28	*	34	10-16	3-5	3-3	10	3	3	3	2	26	
at Hof	1/4	*	39	7-14	1-4	7-7	10	3	6	1	0	22	
at NU	1/6	*	25	6-15	4-7	5-6	6	4	2	0	3	21	
UNCW	1/11	*	39	8-16	2-5	7-9	6	2	2	2	2	25	
COFC	1/13	*	39	6-16	4-8	2-8	8	4	5	0	2	18	
ELON	1/20	*	27	4-8	1-2	4-6	3	3	1	0	0	13	
at JMU	1/25	*	33	2-18	0-3	4-4	11	3	3	9	1	8	
at Tow	1/27	*	33	7-17	3-6	5-11	7	3	4	0	3	22	
DEL	2/1	*	37	2-9	1-2	6-8	8	5	6	1	1	11	

>> BOGGS' CAREER STATISTICS

Season	GP	GS	Min/Avg	FG-FGA	Pct	3pt-Att	Pct	FT-FTA	Pct	Off	Def	Reb	Avg	PF	FO	A	TO	Blk	S	TP	Avg
2015-16	30	24	802/26.7	68-233	.292	17-56	.304	70-102	.686	38	57	95	3.2	81	5	45	55	10	56	223	7.4
2016-17	31	26	734/23.7	82-214	.383	22-74	.297	60-76	.789	44	65	109	3.5	60	0	60	76	17	54	246	7.9
2017-18	30	30	907/30.2	156-373	.418	41-129	.318	103-139	.741	46	91	137	4.6	85	1	88	111	24	65	456	15.2
2018-19	19	19	648/34.1	107-261	.410	28-79	.354	75-105	.714	28	105	133	7.0	48	2	72	77	14	42	317	16.7
CAREER	110	99	3091/28.1	413-1081	.382	108-338	.320	308-422	.730	156	318	474	4.3	274	8	265	319	65	217	1242	11.3



#3 ASHLEY TAYLOR

JUNIOR - GUARD

CHARLOTTESVILLE, VA. - ST. ANNE'S-BELFIELD

>> TAYLOR'S CAREER HIGHS

MINUTES		FREE THROWS	
Season 6 vs. GW, 12/28/18		Season 1 vs. GW, 12/28/18	
Career 9 vs. USC Upstate, 12/5/17		Career 1 vs. GW, 12/28/18	
POINTS		ASSISTS	
Season 1 vs. GW, 12/28/18		Season -	
Career 3 vs. USC Upstate, 12/5/17		Career 1 (4x) last time at CofC, 12/29/17	
REBOUNDS		STEALS	
Season -		Season -	
Career 2 vs. Loyola, 11/25/17		Career 1 vs. Davidson, 11/27/17	
FIELD GOALS		BLOCKS	
Season -		Season -	
Career 1 (2x) last time at Elon, 3/1/18		Career -	
3-POINT FIELD GOALS		MISCELLANEOUS	
Season -		Career in Double Figures 0	
Career 1 vs. USC Upstate, 12/5/17		2018-19 in Double Figures 0	

>> 2018-19 GAME-BY-GAME

Opp	Date	GS	Min	FG-A	3FG-A	FTA	Reb.	A	TO	BLK	STL	P	L
VCU	11/6												
HOW	11/12												
at Loy	11/17	1	0-0	0-0	0-0	0	0	0	0	0	0	0	0
at DC	11/24												
ECU	11/27												
at Hart	11/30												
at Fair	12/2												
UOFR	12/5												
at ODU	12/8	1	0-1	0-1	0-0	0	0	0	0	0	0	0	0
at NSU	12/21												
GW	12/28	6	0-3	0-2	1-2	0	0	0	0	0	0	0	1
at Hof	1/4												
at NU	1/6												
UNCW	1/11												
COFC	1/13												
ELON	1/20												
at JMU	1/25	3	0-0	0-0	0-0	0	0	0	0	0	0	0	0
at Tow	1/27												
DEL	2/1												

>> TAYLOR'S CAREER STATISTICS

Season	GP	GS	Min/Avg	FG-FGA	Pct	3pt-Att	Pct	FT-FTA	Pct	Off	Def	Reb	Avg	PF	FO	A	TO	Blk	S	TP	Avg
2016-17	7	0	22/3.1	0-6	.000	0-4	.000	0-0	.000	1	2	3	0.4	0	0	2	1	0	0	0	0.0
2017-18	13	0	32/2.5	2-9	.222	1-3	.333	0-0	.000	0	7	7	0.5	1	0	2	4	0	1	5	0.4
2018-19	4	0	11/2.8	0-4	.000	0-3	.000	1-2	.500	0	0	0	0.0	0	0	0	0	0	0	1	0.3
CAREER	25	0	65/2.7	2-20	.105	1-10	.100	1-2	.500	1	9	10	0.4	1	0	4	5	0	1	6	0.3



#5 MISHA JONES

SENIOR - GUARD/FORWARD

MANASSAS PARK, VA. - BATTLEFIELD

>> JONES' CAREER HIGHS

MINUTES		FREE THROWS	
Season 25 at Towson, 1/27/19		Season 6 at Towson, 1/27/19	
Career 27 vs. Delaware, 2/23/18		Career 6 at Towson, 1/27/19	
POINTS		ASSISTS	
Season 9 (2x) last vs. UNCW, 1/11/19		Season 4 at Old Dominion, 12/8/18	
Career 9 (2x) last vs. UNCW, 1/11/19		Career 4 (3x) last time at ODU, 12/8/18	
REBOUNDS		STEALS	
Season 8 at Towson, 1/27/19		Season 2 at Hofstra, 1/4/19	
Career 8 at Towson, 1/27/19		Career 2 (2x) last time at Hofstra, 1/4/19	
FIELD GOALS		BLOCKS	
Season 3 (2x) last vs. UNCW, 1/11/19		Season 1 (3x) last time vs. Elon, 1/20/19	
Career 3 (2x) last vs. UNCW, 1/11/19		Career 1 (4x) last time vs. Elon, 1/20/19	
3-POINT FIELD GOALS		MISCELLANEOUS	
Season 3 vs. UNCW, 1/11/19		Career in Double Figures 0	
Career 3 vs. UNCW, 1/11/19		2018-19 in Double Figures 0	

>> 2018-19 GAME-BY-GAME

Opp	Date	GS	Min	FG-A	3FG-A	FTA	Reb.	A	TO	BLK	STL	P	L
VCU	11/6	4	1-1	1-1	1-2	4	0	0	0	0	4		
HOW	11/12	14	3-5	2-4	1-1	3	2	2	1	0	9		
at Loy	11/17	13	2-4	0-2	1-2	2	1	0	0	0	5		
at DC	11/24	11	1-2	1-2	0-0	1	3	1	1	0	3		
ECU	11/27	9	0-3	0-3	0-0	2	0	0	0	0	0		
at Hart	11/30	12	1-2	1-1	0-0	4	1	0	0	0	3		
at Fair	12/2	8	0-1	0-1	0-0	1	0	0	0	0	0		
UOFR	12/5	6	0-0	0-0	0-0	1	0	1	0	0	0		
at ODU	12/8	13	2-5	0-1	0-0	4	4	1	0	0	4		
at NSU	12/21	8	0-1	0-1	0-0	0	0	1	0	1	0		
GW	12/28	*	12	1-2	0-0	2-2	1	0	1	0	0	4	
at Hof	1/4	*	6	1-1	1-1	0-0	1	1	0	0	0	3	
at NU	1/6	*	20	2-6	1-3	1-2	3	2	0	0	1	6	
UNCW	1/11	24	3-5	3-5	0-0	2	3	3	1	0	9		
COFC	1/13	19	2-5	2-4	0-0	2	2	1	0	0	6		
ELON	1/20	15	2-3	2-2	2-2	2	2	0	2	0	8		
at JMU	1/25	22	2-3	2-3	0-0	3	0	0	0	0	6		
at Tow	1/27	22	1-5	0-4	6-6	8	2	2	0	0	8		
DEL	2/1	20	1-2	1-2	0-0	2	0	3	0	0	3		

>> JONES' CAREER STATISTICS

Season	GP	GS	Min/Avg	FG-FGA	Pct	3pt-Att	Pct	FT-FTA	Pct	Off	Def	Reb	Avg	PF	FO	A	TO	Blk	S	TP	Avg
2015-16	27	0	180/6.7	12-36	.333	5-20	.250	7-10	.700	1	16	17	0.6	15	0	8	9	0	4	36	1.3
2016-17																					
2017-18	28	0	201/7.2	13-41	.317	7-26	.269	10-11	.909	6	26	32	1.1	29	0	15	17	1	7	43	1.5
2018-19	19	3	261/13.7	25-56	.446	17-40	.425	14-16	.875	13	29	42	2.2	38	0	23	16	3	3	81	4.3
CAREER	74	3	642/8.7	50-133	.376	29-86	.337	31-37	.838	20	71	91	1.2	82	0	46	42	4	14	160	2.2



#10 EVA HODGSON

FRESHMAN - GUARD
RINDGE, N.H. - NEW HAMPTON SCHOOL

>> HODGSON'S CAREER HIGHS

MINUTES	FREE THROWS
Season 39 (2x) last time at TU, 1/27/19	Season 8 at James Madison, 1/25/19
Career 39 (2x) last time at TU, 1/27/19	Career 8 at James Madison, 1/25/19
POINTS	ASSISTS
Season 18 at Hofstra, 1/4/19	Season 6 (3x) last time vs. Elon, 1/20/19
Career 18 at Hofstra, 1/4/19	Career 6 (3x) last time vs. Elon, 1/20/19
REBOUNDS	STEALS
Season 6 at Towson, 1/27/19	Season 4 at Fairfield, 12/2/18
Career 6 at Towson, 1/27/19	Career 4 at Fairfield, 12/2/18
FIELD GOALS	BLOCKS
Season 6 at Hofstra, 1/4/19	Season 2 vs. UNCW, 1/11/19
Career 6 at Hofstra, 1/4/19	Career 2 vs. UNCW, 1/11/19
3-POINT FIELD GOALS	MISCELLANEOUS
Season 3 vs. Northeastern, 1/6/19	Career in Double Figures 9
Career 3 vs. Northeastern, 1/6/19	2018-19 in Double Figures 9

> 2018-19 GAME-BY-GAME

Opp	Date	GS	Min	FG-A	3FG-A	FT-A	Reb.	A	TO	BLK	STL	PTS
VCU	11/6	*	28	4-8	0-2	0-0	0	3	2	0	2	8
HOW	11/12	*	35	2-6	1-3	1-2	5	4	4	0	2	6
at Loy	11/17	*	30	2-7	0-1	1-1	2	5	2	1	1	5
at DC	11/24	*	30	0-4	0-1	0-0	3	2	4	0	0	0
ECU	11/27	*	26	4-4	2-2	3-4	1	0	2	1	0	13
at Hart	11/30	*	34	4-12	1-5	5-7	2	2	4	0	3	14
at Fair	12/2	*	32	0-4	0-2	3-4	5	4	4	0	4	3
UOFR	12/5	*	32	5-11	1-4	4-4	4	6	3	1	2	15
at ODU	12/8	*	22	2-5	0-2	0-2	1	3	1	0	0	4
at NSU	12/21	*	14	2-3	1-1	0-0	1	2	2	0	0	5
GW	12/28	*	32	4-7	2-3	1-1	4	6	2	1	0	11
at Hof	1/4	*	39	6-14	1-3	5-6	1	2	3	1	2	18
at NU	1/6	*	34	4-4	3-3	5-6	4	2	2	0	2	16
UNCW	1/11	*	27	2-6	2-5	0-0	0	1	2	1	2	6
COFC	1/13	*	17	1-4	0-1	0-0	1	1	5	1	0	2
ELON	1/20	*	37	2-7	0-2	0-0	4	6	2	0	2	4
at JMU	1/25	*	27	2-6	1-4	8-8	4	1	4	0	1	13
at Tow	1/27	*	39	4-10	0-1	5-6	6	5	1	1	0	13
DEL	2/1	*	38	3-7	1-1	4-4	1	4	1	0	2	11

>> HODGSON'S CAREER STATISTICS

Season	GP	GS	Min/Avg	FG-FGA	Pct	3pt-Att	Pct	FT-FTA	Pct	Off	Def	Reb	Avg	PF	FO	A	TO	Blk	S	TP	Avg
2018-19	19	19	571/30.1	53-129	.411	16-46	.348	45-56	.804	16	33	49	2.6	52	1	59	49	8	2	167	8.8
CAREER	19	19	571/30.1	53-129	.411	16-46	.348	45-56	.804	16	33	49	2.6	52	1	59	49	8	2	167	8.8



#11 NYLA POLLARD

SOPHOMORE - GUARD
VIRGINIA BEACH, VA. - PRINCESS ANNE

>> POLLARD'S CAREER HIGHS

MINUTES	FREE THROWS
Season 38 at Hofstra, 1/4/19	Season 6 vs. East Carolina, 11/27/18
Career 38 at Hofstra, 1/4/19	Career 6 vs. East Carolina, 11/27/18
POINTS	ASSISTS
Season 10 vs. East Carolina, 11/27/18	Season 6 vs. UNCW, 1/11/19
Career 14 vs. USC Upstate, 12/5/17	Career 6 vs. UNCW, 1/11/19
REBOUNDS	STEALS
Season 12 vs. East Carolina, 11/27/18	Season 3 vs. Richmond, 12/5/18
Career 12 vs. East Carolina, 11/27/18	Career 4 vs. Davidson, 11/27/17
FIELD GOALS	BLOCKS
Season 4 (2x) last time vs. CofC, 1/19/13	Season 1 (3x) last time vs. Elon, 1/20/19
Career 6 vs. USC Upstate, 12/5/17	Career 1 (7x) last time vs. Elon, 1/20/19
3-POINT FIELD GOALS	MISCELLANEOUS
Season 2 (2x) last vs. UNCW, 1/11/19	Career in Double Figures 4
Career 2 (6x) last vs. UNCW, 1/11/19	2018-19 in Double Figures 1

>> 2018-19 GAME-BY-GAME

Opp	Date	GS	Min	FG-A	3FG-A	FT-A	Reb.	A	TO	BLK	STL	PTS
VCU	11/6		19	2-4	1-1	0-1	1	0	0	0	1	5
HOW	11/12		34	3-7	2-3	0-0	3	2	2	0	2	8
at Loy	11/17		23	4-6	1-2	0-0	2	4	1	0	1	9
at DC	11/24		25	1-4	0-2	0-1	1	1	2	0	0	2
ECU	11/27	*	35	2-9	0-3	6-8	12	2	4	1	0	10
at Hart	11/30	*	25	0-6	0-3	0-0	3	2	2	0	0	0
at Fair	12/2	*	27	0-3	0-0	2-4	3	3	3	0	2	2
UOFR	12/5	*	35	2-5	1-4	0-0	2	2	3	0	3	5
at ODU	12/8	*	20	0-2	0-1	2-2	0	4	2	0	2	2
at NSU	12/21	*	37	2-6	0-2	2-2	2	4	0	0	1	6
GW	12/28	*	33	1-7	0-2	0-0	1	3	2	0	1	2
at Hof	1/4	*	38	1-4	1-1	1-2	7	3	1	0	2	4
at NU	1/6	*	13	0-2	0-1	0-0	0	0	0	0	0	0
UNCW	1/11	*	36	2-4	2-3	3-4	7	6	3	0	0	9
COFC	1/13	*	37	4-9	0-3	1-2	2	4	0	1	1	9
ELON	1/20	*	33	1-6	0-3	0-0	1	2	3	1	0	2
at JMU	1/25	*	25	0-3	0-1	2-2	1	1	2	0	0	2
at Tow	1/27	*	34	2-3	1-1	3-4	2	4	2	0	1	8
DEL	2/1	*	22	1-6	1-2	0-0	1	4	1	0	2	3

>> POLLARD'S CAREER STATISTICS

Season	GP	GS	Min/Avg	FG-FGA	Pct	3pt-Att	Pct	FT-FTA	Pct	Off	Def	Reb	Avg	PF	FO	A	TO	Blk	S	TP	Avg
2017-18	30	27	658/21.9	44-121	.364	14-48	.292	20-27	.741	22	31	53	1.8	71	3	46	40	4	15	122	4.1
2018-19	19	15	553/29.1	28-96	.292	10-38	.263	22-32	.688	19	32	51	2.7	44	2	52	33	3	19	88	4.6
CAREER	49	42	1211/24.7	72-217	.332	24-86	.279	42-59	.712	41	63	104	2.1	115	5	98	73	7	34	210	4.3



#12 HARPER BIRDSONG

SOPHOMORE - GUARD

SUFFOLK, VA. - NANSEMOND SUFFOLK
(George Washington)

>> BIRDSONG'S CAREER HIGHS

MINUTES	Season 30 at Old Dominion, 12/8/18	FREE THROWS	Season 4 (2x) last vs. UNCW, 1/11/19
	Career 30 at Old Dominion, 12/8/18		Career 4 (2x) last vs. UNCW, 1/11/19
POINTS	Season 18 at Old Dominion, 12/8/18	ASSISTS	Season 4 at Old Dominion, 12/8/18
	Career 18 at Old Dominion, 12/8/18		Career 4 at Old Dominion, 12/8/18
REBOUNDS	Season 5 (3x) last time vs. CofC, 1/13/19	STEALS	Season 3 vs. GW, 12/28/18
	Career 5 (3x) last time vs. CofC, 1/13/19		Career 3 vs. GW, 12/28/18
FIELD GOALS	Season 6 (3x) last time at NU, 1/6/19	BLOCKS	Season 2 vs. UNCW, 1/11/19
	Career 6 (3x) last time at NU, 1/6/19		Career 2 vs. UNCW, 1/11/19
3-POINT FIELD GOALS	Season 4 vs. GW, 12/28/18	MISCELLANEOUS	Career in Double Figures 11
	Career 4 vs. GW, 12/28/18		2018-19 in Double Figures 11

>> BIRDSONG'S CAREER STATISTICS

Season	GP	GS	Min/Avg	FG-FGA	Pct	3pt-Att	Pct	FT-FTA	Pct	Off	Def	Reb	Avg	PF	FO	A	TO	Blk	S	TP	Avg
2016-17	8	0	39/4.9	4-13	.308	2-8	.250	1-1	1.000	0	2	2	0.3	2	0	2	1	0	1	11	1.4
2017-18	DNP - NCAA TRANSFER RULE																				
2018-19	19	4	379/19.9	68-171	.398	35-92	.727	24-33	.727	10	22	32	1.7	39	1	20	34	5	13	195	10.3
CAREER	27	4	418/15.5	72-184	.391	37-100	.370	25-34	.735	10	24	35	1.3	41	1	22	35	5	14	206	7.6

>> 2018-19 GAME-BY-GAME

Opp	Date	GS	Min	FG-A	3FG-A	FT-A	Reb.	A	TO	BLK	STL	PTS
VCU	11/6	*	12	0-4	0-2	0-0	0	0	4	0	0	0
HOW	11/12	*	16	5-10	1-4	1-2	2	1	1	1	1	12
at Loy	11/17	*	14	3-3	3-3	0-2	0	0	2	0	0	9
at DC	11/24	*	20	4-10	2-6	0-0	0	2	1	0	1	10
ECU	11/27		19	3-9	1-3	3-3	1	1	3	1	1	10
at Hart	11/30		19	2-5	2-5	2-5	1	1	2	0	0	8
at Fair	12/2		25	3-8	3-5	2-2	0	0	1	0	0	11
UOFR	12/5		18	5-7	3-5	0-0	2	2	1	0	1	13
at ODU	12/8		30	6-18	2-8	4-4	2	4	3	0	1	18
at NSU	12/21		28	5-11	3-7	1-1	5	1	4	0	1	14
GW	12/28		23	6-10	4-6	0-0	2	2	1	0	3	16
at Hof	1/4		23	2-7	2-5	3-4	1	0	22	0	0	9
at NU	1/6		29	6-15	2-7	2-4	5	2	1	0	1	16
UNCW	1/11		21	0-10	0-5	4-4	2	1	0	2	1	4
COFC	1/13		23	3-11	2-5	0-0	4	0	2	0	0	8
ELON	1/20		17	5-11	3-6	0-0	3	2	3	1	0	13
at JMU	1/25		14	5-9	2-5	0-0	0	0	1	0	0	12
at Tow	1/27		3	0-1	0-1	0-0	0	0	1	0	0	0
DEL	2/1		23	5-11	0-4	2-2	1	1	1	0	1	12



#15 EMMA KRAUSE

FRESHMAN - FORWARD

PLANTATION, FLA. - CARDINAL GIBBONS

>> KRAUSE'S CAREER HIGHS

MINUTES	Season 22 (2x) last time at TU, 1/27/19	FREE THROWS	Season 2 at Fairfield, 12/2/18
	Career 22 (2x) last time at TU, 1/27/19		Career 2 at Fairfield, 12/2/18
POINTS	Season 14 vs. Howard, 11/12/18	ASSISTS	Season 3 at Loyola, 11/14/18
	Career 14 vs. Howard, 11/12/18		Career 3 at Loyola, 11/14/18
REBOUNDS	Season 5 (2x) last time at ODU, 12/8/18	STEALS	Season 2 at Loyola, 11/14/18
	Career 5 (2x) last time at ODU, 12/8/18		Career 2 at Loyola, 11/14/18
FIELD GOALS	Season 5 (2x) last time at TU, 1/27/19	BLOCKS	Season 2 (2x) last time vs. GW, 12/28/18
	Career 5 (2x) last time at TU, 1/27/19		Career 2 (2x) last time vs. GW, 12/28/18
3-POINT FIELD GOALS	Season 4 vs. Howard, 11/12/18	MISCELLANEOUS	Career in Double Figures 2
	Career 4 vs. Howard, 11/12/18		2018-19 in Double Figures 2

>> 2018-19 GAME-BY-GAME

Opp	Date	GS	Min	FG-A	3FG-A	FT-A	Reb.	A	TO	BLK	STL	PTS
VCU	11/6		16	1-5	1-4	1-2	4	1	0	1	0	4
HOW	11/12		13	5-9	4-7	0-2	2	0	0	2	0	14
at Loy	11/17		18	2-2	1-1	0-0	5	3	1	0	2	5
at DC	11/24		16	3-5	3-4	0-0	3	0	0	0	0	9
ECU	11/27		15	2-6	2-4	0-0	4	2	0	0	0	6
at Hart	11/30		22	0-6	0-4	2-2	1	0	1	1	1	2
at Fair	12/2		11	0-3	0-2	2-2	4	0	1	0	0	2
UOFR	12/5		8	1-2	1-2	0-0	1	0	1	0	0	3
at ODU	12/8		21	1-5	0-3	0-0	5	1	0	1	1	2
at NSU	12/21		21	3-7	1-5	0-2	1	2	0	0	0	7
GW	12/28		14	1-5	1-4	0-0	2	0	0	2	0	3
at Hof	1/4		13	0-0	0-0	0-0	1	1	0	0	0	0
at NU	1/6		18	1-5	0-4	1-1	1	1	2	0	0	3
UNCW	1/11	*	12	0-4	0-4	0-0	0	0	0	0	0	0
COFC	1/13	*	7	0-1	0-0	0-0	0	0	0	1	0	0
ELON	1/20		10	3-6	3-5	0-0	0	0	0	1	0	9
at JMU	1/25		13	0-2	0-2	0-0	3	0	0	0	1	0
at Tow	1/27		22	5-8	3-5	0-0	4	0	1	0	1	13
DEL	2/1		9	1-2	1-2	0-0	2	0	1	1	0	3

>> KRAUSE'S CAREER STATISTICS

Season	GP	GS	Min/Avg	FG-FGA	Pct	3pt-Att	Pct	FT-FTA	Pct	Off	Def	Reb	Avg	PF	FO	A	TO	Blk	S	TP	Avg
2018-19	19	2	279/14.7	29-83	.349	21-62	.339	6-11	.545	10	32	42	2.2	31	0	11	8	10	6	85	4.5
CAREER	19	2	279/14.7	29-83	.349	21-62	.339	6-11	.545	10	32	42	2.2	31	0	11	8	10	6	85	4.5



#20 CHANDLER SMITH

SENIOR - CENTER

PORT TOBACCO, MD. - ST. MARY'S RYKEN

>> SMITH'S CAREER HIGHS

MINUTES

Season	8 (2x) last time vs. ECU, 11/27/18
Career	18 at Delaware, 1/26/16

POINTS

Season	1 vs. Howard, 11/12/18
Career	4 (4x) last time at SFU 12/2/17

REBOUNDS

Season	3 vs. East Carolina, 11/27/18
Career	5 vs. Hofstra, 2/7/17

FIELD GOALS

Season	-
Career	2 (3x) last time at SFU, 12/2/17

3-POINT FIELD GOALS

Season	-
Career	-

FREE THROWS

Season	1 vs. Howard, 11/12/18
Career	4 vs. Hofstra, 2/7/17

ASSISTS

Season	1 vs. Richmond, 12/5/18
Career	1 (3x) last time vs. UofR, 12/5/18

STEALS

Season	-
Career	2 (2x) last time vs. Mount St. Mary's, 12/18/16

BLOCKS

Season	1 (3x) last time at JMU 1/25/19
Career	3 vs. Mount St. Mary's, 12/18/16

MISCELLANEOUS

Career in Double Figures	0
2017-18 in Double Figures	0

>> 2018-19 GAME-BY-GAME

Opp	Date	GS	Min	FG-A	3FG-A	FT-A	Reb.	A	TO	BLK	STL	PTS	
VCU	11/6	8	0-0	0-0	0-0	2	0	0	0	0	0	0	
HOW	11/12	4	0-0	0-0	1-2	2	0	1	1	0	1	0	
at Loy	11/17	4	0-1	0-0	0-0	0	0	0	1	0	0	0	
at DC	11/24		DNP - COACH'S DECISION										
ECU	11/27	8	0-0	0-0	0-0	3	0	2	0	0	0	0	
at Hart	11/30		DNP - COACH'S DECISION										
at Fair	12/2		DNP - COACH'S DECISION										
UOFR	12/5	5	0-0	0-0	0-0	1	1	0	0	0	0	0	
at ODU	12/8		DNP - COACH'S DECISION										
at NSU	12/21	2	0-0	0-0	0-0	0	0	0	0	0	0	0	
GW	12/28	1	0-0	0-0	0-0	0	0	1	0	0	0	0	
at Hof	1/4		DNP - COACH'S DECISION										
at NU	1/6		DNP - COACH'S DECISION										
UNCW	1/11		DNP - COACH'S DECISION										
COFC	1/13		DNP - COACH'S DECISION										
ELON	1/20		DNP - COACH'S DECISION										
at JMU	1/25	2	0-0	0-0	0-0	0	0	0	1	0	0	0	
at Tow	1/27	1	0-0	0-0	0-0	0	0	1	0	0	0	0	
DEL	2/1		DNP - COACH'S DECISION										

>> SMITH'S CAREER STATISTICS

Season	GP	GS	Min/Avg	FG-FGA	Pct	3pt-Att	Pct	FT-FTA	Pct	Off	Def	Reb	Avg	PF	FO	A	TO	Blk	S	TP	Avg
2015-16	19	0	97/5.1	3-12	.250	0-0	.000	0-6	.000	2	10	12	0.6	13	0	0	5	4	3	6	0.3
2016-17	13	0	77/5.9	6-21	.286	0-0	.000	7-8	.875	2	22	24	1.8	16	1	1	7	11	3	19	1.5
2017-18	21	0	86/4.1	5-17	.294	0-0	.000	0-0	.000	4	8	12	0.6	15	0	3	8	9	1	10	0.5
2018-19	9	0	35/3.9	0-1	.000	0-0	.000	1-2	.500	1	7	8	0.9	6	0	1	5	3	0	1	0.1
CAREER	62	0	294/4.8	14-51	.275	0-0	.000	8-16	.500	9	47	56	0.9	50	1	5	25	27	7	36	0.6



#21 BAILEY EICHNER

SOPHOMORE - GUARD/FORWARD

CUDAHY, WISC. - CUDAHY

>> EICHNER'S CAREER HIGHS

MINUTES

Season	13 vs. GW, 12/28/18
Career	13 vs. GW, 12/28/18

POINTS

Season	2 at Old Dominion, 12/8/18
Career	4 vs. James Madison, 2/2/18

REBOUNDS

Season	6 at Old Dominion, 12/8/18
Career	6 at Old Dominion, 12/8/18

FIELD GOALS

Season	1 at Old Dominion, 12/8/18
Career	1 (3x) last time at ODU, 12/8/18

3-POINT FIELD GOALS

Season	-
Career	-

FREE THROWS

Season	1 vs. VCU, 11/6/18
Career	2 vs. James Madison, 2/2/18

ASSISTS

Season	1 (2x) last time at Hofstra, 1/4/19
Career	2 at Hofstra, 1/19/18

STEALS

Season	2 at Old Dominion, 12/8/18
Career	2 at Old Dominion, 12/8/18

BLOCKS

Season	1 vs. GW, 12/28/18
Career	1 (2x) last time vs. GW, 12/28/18

MISCELLANEOUS

Career in Double Figures	0
2017-18 in Double Figures	0

>> 2018-19 GAME-BY-GAME

Opp	Date	GS	Min	FG-A	3FG-A	FT-A	Reb.	A	TO	BLK	STL	PTS	
VCU	11/6	11	0-2	0-1	1-2	1	0	1	0	0	1	0	
HOW	11/12	1	0-0	0-0	0-0	0	0	1	0	0	0	0	
at Loy	11/17	1	0-0	0-0	0-0	0	0	0	0	0	0	0	
at DC	11/24		DNP - COACH'S DECISION										
ECU	11/26		DNP - COACH'S DECISION										
at Hart	11/30		DNP - COACH'S DECISION										
at Fair	12/2		DNP - COACH'S DECISION										
UOFR	12/5		DNP - COACH'S DECISION										
at ODU	12/8	11	1-2	0-0	0-0	6	0	0	0	0	2	2	
at NSU	12/21	7	0-2	0-1	0-0	2	0	0	0	1	0	0	
GW	12/28	13	0-1	0-1	0-0	2	1	0	1	0	1	0	
at Hof	1/4	8	0-0	0-0	0-0	1	1	0	0	0	0	0	
at NU	1/6	6	0-1	0-0	0-0	1	0	0	0	0	0	0	
UNCW	1/11	3	0-0	0-0	0-0	0	0	0	0	0	0	0	
COFC	1/13		DNP - COACH'S DECISION										
ELON	1/20	1	0-0	0-0	0-0	0	0	1	0	0	0	0	
at JMU	1/25	9	0-1	0-0	0-0	2	0	0	0	0	0	0	
at Tow	1/27	2	0-0	0-0	0-0	0	0	0	1	0	0	0	
DEL	2/1		DNP - COACH'S DECISION										

>> EICHNER'S CAREER STATISTICS

Season	GP	GS	Min/Avg	FG-FGA	Pct	3pt-Att	Pct	FT-FTA	Pct	Off	Def	Reb	Avg	PF	FO	A	TO	Blk	S	TP	Avg
2017-18	16	0	46/2.9	2-6	.333	0-2	.000	4-8	.500	6	9	15	0.9	14	0	2	7	2	1	8	0.5
2018-19	12	0	72/6.0	1-9	.111	0-3	.000	1-2	.500	4	11	15	1.3	8	0	2	4	1	3	3	0.3
CAREER	28	0	118/4.2	3-15	.200	0-5	.000	5-10	.500	10	20	30	1.1	22	0	4	11	3	4	11	0.4



#25 GABBY ROGERS

SOPHOMORE - CENTER
DALLAS, TEXAS - BISHOP LYNCH

>> ROGERS' CAREER HIGHS

MINUTES		FREE THROWS
Season 30 at Fairfield, 12/2/18		Season 2 (3x) last time at NU, 1/6/19
Career 30 at Fairfield, 12/2/18		Career 2 (6x) last time at NU, 1/6/19
POINTS		ASSISTS
Season 10 at Davidson, 11/24/18		Season 1 (5x) last time vs. CofC, 1/13/19
Career 10 at Davidson, 11/24/18		Career 1 (12x) last time vs. CofC, 1/13/19
REBOUNDS		STEALS
Season 5 (3x) last time vs. CofC, 1/13/19		Season 3 (2x) last time at Hofstra, 1/4/19
Career 5 (3x) last time vs. CofC, 1/13/19		Career 3 (3x) last time at Hofstra, 1/4/19
FIELD GOALS		BLOCKS
Season 4 (3x) last time at Fair., 12/2/18		Season 2 vs. Elon, 1/20/19
Career 4 (4x) last time at Fair., 12/2/18		Career 2 (3x) last time vs. Elon, 1/20/19
3-POINT FIELD GOALS		MISCELLANEOUS
Season -		Career in Double Figures 1
Career -		2018-19 in Double Figures 1

>> 2018-19 GAME-BY-GAME

Opp	Date	GS	Min	FG-A	3FG-A	FT-A	Reb.	A	TO	BLK	STL	PTS
VCU	11/6	*	18	1-2	0-0	2-2	1	0	2	0	0	4
HOW	11/12	*	19	1-2	0-0	0-0	3	0	2	1	0	2
at Loy	11/17	*	16	4-6	0-0	0-0	2	1	0	0	0	8
at DC	11/24	*	27	4-8	0-1	2-2	2	0	1	0	1	10
ECU	11/27	*	15	0-1	0-0	0-0	2	0	3	0	1	0
at Hart	11/30	*	18	1-2	0-0	0-0	1	0	0	1	3	2
at Fair.	12/2	*	30	4-7	0-0	0-0	5	1	0	0	1	8
UOFR	12/5	*	29	2-7	0-0	1-2	5	0	1	0	0	5
at ODU	12/8	*	11	3-5	0-0	0-0	2	0	0	0	0	6
at NSU	12/21	*	10	1-3	0-0	0-0	3	0	0	0	0	2
GW	12/28	*	12	1-2	0-0	0-0	3	0	0	0	1	2
at Hof	1/4	*	21	2-3	0-0	0-0	2	1	0	0	3	4
at NU	1/6	*	17	0-2	0-0	2-2	1	1	1	0	0	2
UNCW	1/11		11	0-1	0-0	0-0	3	0	2	1	1	0
COFC	1/13		21	1-5	0-0	1-2	5	1	1	1	2	3
ELON	1/20	*	23	2-3	0-0	1-1	4	0	1	0	2	5
at JMU	1/25	*	15	1-1	0-0	0-0	1	0	1	0	0	2
at Tow	1/27	*	15	2-5	0-0	0-0	2	0	2	0	0	4
DEL	2/1	*	12	1-5	0-0	0-0	2	0	0	0	1	2

>> ROGERS' CAREER STATISTICS

Season	GP	GS	Min/Avg	FG-FGA	Pct	3pt-Att	Pct	FT-FTA	Pct	Off	Def	Reb	Avg	PF	FO	A	TO	Blk	S	TP	Avg
2017-18	29	0	263/9.1	24-47	.511	0-0	.000	9-13	.692	12	40	52	1.8	55	1	7	15	6	10	57	2.0
2018-19	19	17	343/18.1	31-70	.443	0-1	.000	9-11	.818	15	34	49	2.6	58	0	5	17	6	14	71	3.7
CAREER	48	17	606/12.6	55-117	.470	0-1	.000	18-24	.750	27	74	101	2.1	113	1	12	32	12	24	128	2.7



#30 VICTORIA REYNOLDS

JUNIOR - FORWARD
FAIRFAX, VA./ARCHBISCHOP SPALDING

>> REYNOLDS' CAREER HIGHS

MINUTES		FREE THROWS
Season 39 vs. Delaware, 2/1/19		Season 6 (2x) last time at NSU, 12/21/18
Career 40 (2x) last time vs. UNCW, 2/16/18		Career 9 vs. Old Dominion, 12/17/17
POINTS		ASSISTS
Season 17 vs. UNCW, 1/11/19		Season 7 vs. Charleston, 1/13/19
Career 22 at St. Francis (Pa.), 12/2/17		Career 8 at East Carolina, 11/21/17
REBOUNDS		STEALS
Season 15 vs. East Carolina, 11/27/18		Season 4 vs. Charleston, 1/13/19
Career 18 vs. Charleston, 1/26/18		Career 7 vs. Hofstra, 1/28/18
FIELD GOALS		BLOCKS
Season 6 (4x) last time at UD, 2/1/19		Season 3 at Norfolk State, 12/21/18
Career 9 vs. Northeastern, 2/11/18		Career 3 (3x) last time vs. NSU, 12/21/18
3-POINT FIELD GOALS		MISCELLANEOUS
Season 2 (3x) last time vs. CofC, 1/13/19		Career in Double Figures 31
Career 2 (5x) last time vs. CofC, 1/13/19		2018-19 in Double Figures 12

>> 2018-19 GAME-BY-GAME

Opp	Date	GS	Min	FG-A	3FG-A	FT-A	Reb.	A	TO	BLK	STL	PTS
VCU	11/6	*	37	4-7	0-0	0-0	4	5	2	0	0	8
HOW	11/12	*	26	3-10	0-2	4-6	5	3	1	0	2	10
at Loy	11/17	*	33	4-10	0-0	2-2	5	2	7	0	0	10
at DC	11/24	*	29	6-8	0-0	1-1	3	2	2	0	1	13
ECU	11/27	*	35	4-6	1-1	6-6	15	4	6	2	1	15
at Hart	11/30	*	29	1-6	0-0	2-2	7	1	5	0	3	4
at Fair.	12/2	*	30	4-8	0-0	4-6	4	1	3	0	3	12
UOFR	12/5	*	35	5-8	2-2	2-2	6	0	5	0	1	14
at ODU	12/8	*	37	4-10	1-4	4-4	6	2	5	2	1	13
at NSU	12/21	*	35	2-5	1-2	6-8	9	2	2	3	1	11
GW	12/28		15	3-7	2-2	0-0	5	2	0	0	0	8
at Hof	1/4		13	0-1	0-0	0-0	1	0	4	0	0	0
at NU	1/6		30	4-10	1-3	0-0	3	2	5	0	2	9
UNCW	1/11	*	31	6-9	1-2	4-5	7	0	4	2	1	17
COFC	1/13	*	36	3-8	2-2	0-0	10	7	4	1	4	8
ELON	1/20	*	37	3-6	0-1	5-8	6	3	0	2	1	11
at JMU	1/25	*	34	1-4	1-2	2-2	0	0	2	0	1	5
at Tow	1/27	*	26	6-11	0-1	0-0	3	0	2	0	1	12
DEL	2/1	*	39	6-11	0-2	1-2	6	3	2	2	3	14

>> REYNOLDS' CAREER STATISTICS

Season	GP	GS	Min/Avg	FG-FGA	Pct	3pt-Att	Pct	FT-FTA	Pct	Off	Def	Reb	Avg	PF	FO	A	TO	Blk	S	TP	Avg
2016-17	28	0	466/16.6	51-104	.490	5-12	.417	36-46	.783	44	45	89	3.2	42	0	21	30	5	33	143	5.1
2017-18	30	30	977/32.6	125-270	.463	8-34	.235	50-68	.735	65	147	212	7.1	77	1	60	69	22	71	308	10.3
2018-19	19	16	585/30.8	69-145	.476	13-27	.481	43-54	.796	16	92	108	5.7	46	2	39	61	13	27	194	10.2
CAREER	77	46	2028/26.3	245-519	.472	26-73	.356	129-168	.768	125	284	409	5.3	165	3	120	160	40	131	645	8.4



#32 CAROLINE STOVER

FRESHMAN - CENTER

PLYMPTON, MASS. - CARDINAL SPELLMAN

>> 2018-19 GAME-BY-GAME

Opp	Date	GS	Min	FG-A	3FG-A	FT-A	Reb.	A	TO	BLK	STL	P
VCU	11/6			DNP								
HOW	11/12			DNP								
at Loy	11/17	1	0-2	0-0	0-0	0	0	0	0	0	0	0
at DC	11/24			DNP								
ECU	11/27			DNP								
at Hart	11/30			DNP								
at Fair	12/2			DNP								
UOFR	12/5			DNP								
at ODU	12/8			DNP								
at NSU	12/21			DNP								
GW	12/28	1	0-0	0-0	0-0	0	0	0	0	0	0	0
at Hof	1/4			DNP								
at NU	1/6			DNP								
UNCW	1/11			DNP								
COFC	1/13			DNP								
ELON	1/20			DNP								
at JMU	1/25			DNP								
at Tow	1/27			DNP								
DEL	2/1			DNP								

>> STOVER'S CAREER STATISTICS

MINUTES		FREE THROWS	
Season	1 at Loyola, 11/14/18	Season	-
Career	1 at Loyola, 11/14/18	Career	-
POINTS		ASSISTS	
Season	-	Season	-
Career	-	Career	-
REBOUNDS		STEALS	
Season	-	Season	-
Career	-	Career	-
FIELD GOALS		BLOCKS	
Season	-	Season	-
Career	-	Career	-
3-POINT FIELD GOALS		MISCELLANEOUS	
Season	-	Career in Double Figures	0
Career	-	2018-19 in Double Figures	0

>> STOVER'S CAREER STATISTICS

Season	GP	GS	Min/Avg	FG-FGA	Pct	3pt-Att	Pct	FT-FTA	Pct	Off	Def	Reb	Avg	PF	FO	A	TO	Blk	S	TP	Avg
2018-19	2	0	1/0.5	0-2	.000	0-0	.000	0-0	.000	0	0	0	0.0	0	0	0	0	0	0	0	0.0
CAREER	2	0	1/0.5	0-2	.000	0-0	.000	0-0	.000	0	0	0	0.0	0	0	0	0	0	0	0	0.0



2018-19 Tribe Women's Basketball





W&M Women's Basketball
William & Mary Season Schedule/Results & Leaders (as of Feb 01, 2019)
All games

RECORD:	OVERALL	HOME	AWAY	NEUTRAL
ALL GAMES	11-8	6-3	5-5	0-0
CONFERENCE	4-4	2-2	2-2	0-0
NON-CONFERENCE	7-4	4-1	3-3	0-0

Date	Opponent	Score	Att.	High Points	High Rebounds
11/06/18	VCU	55-72 L	684	(15)Boggs, Bianca	(6)Boggs, Bianca
11/12/18	HOWARD	w 88-75	564	(26)Boggs, Bianca	(9)Boggs, Bianca
11/17/18	at Loyola	w 65-49	352	(14)Boggs, Bianca	(6)Reynolds, Victoria
11/24/18	at Davidson	65-76 L	412	(18)Boggs, Bianca	(10)Boggs, Bianca
11/27/18	EAST CAROLINA	w 63-43	574	(15)Reynolds, Victoria	(15)Reynolds, Victoria
11/30/18	at HARTFORD	45-50 L	649	(14)Hodgson, Eva	(7)Reynolds, Victoria
12/02/18	at Fairfield	w 60-54	627	(22)Boggs, Bianca	(5)Hodgson, Eva
					(5)Rogers, Gabby
					(5)Boggs, Bianca
12/05/18	RICHMOND	w 65-55	634	(15)Hodgson, Eva	(6)Reynolds, Victoria
12/8/18	at Old Dominion	69-83 L	1802	(18)Birdsong, Harper	(6)Reynolds, Victoria
					(6)Eichner, Bailey
12/21/18	at Norfolk State	w 55-44	246	(14)Birdsong, Harper	(9)Reynolds, Victoria
12/29/18	GEORGE WASHINGTON	w 73-59	611	(26)Boggs, Bianca	(10)Boggs, Bianca
1/4/19	*at Hofstra	w 60-55	323	(22)Boggs, Bianca	(10)Boggs, Bianca
01/06/19	*at Northeastern	74-88 L	540	(21)Boggs, Bianca	(6)Boggs, Bianca
01/11/19	*UNCW	w 70-64	657	(25)Boggs, Bianca	(7)Reynolds, Victoria
					(7)Pollard, Nyla
01/13/19	*COL. OF CHARLESTON	54-66 L	582	(18)Boggs, Bianca	(10)Reynolds, Victoria
01/20/19	*ELON	w 65-60	904	(13)Birdsong, Harper	(6)Reynolds, Victoria
					(13)Boggs, Bianca
1/25/19	*at James Madison	48-65 L	2234	(13)Hodgson, Eva	(11)Boggs, Bianca
1/27/19	*at Towson	w 80-69	609	(22)Boggs, Bianca	(8)Jones, Misha
02/01/19	*DELAWARE	59-70 L	634	(14)Reynolds, Victoria	(8)Boggs, Bianca

* - CAA game

Attendance Summary	Games	Attend	Avg/Game
Home	9	5844	649
Away	10	7794	779
Neutral	0	0	0
Total	19	13638	718



W&M Women's Basketball William & Mary Combined Team Statistics (as of Feb 01, 2019) All games

RECORD:	OVERALL	HOME	AWAY	NEUTRAL
ALL GAMES	11-8	6-3	5-5	0-0
CONFERENCE	4-4	2-2	2-2	0-0
NON-CONFERENCE	7-4	4-1	3-3	0-0

#	Player	gp-gs	min	avg	Total		3-Point		F-Throw		Rebounds				pf	dq	a	to	blk	stl	pts	avg
					fg-fga	fg%	3fg-fga	3fg%	ft-fa	ft%	off	def	tot	avg								
02	Boggs, Bianca	19-19	648	34.1	107-261	.410	28-79	.354	75-105	.714	28	105	133	7.0	48	2	72	77	14	42	317	16.7
12	Birdsong, Harper	19-4	379	19.9	68-171	.398	35-92	.380	24-33	.727	10	22	32	1.7	39	1	20	34	5	13	195	10.3
30	Reynolds, Victoria	19-16	585	30.8	69-145	.476	13-27	.481	43-54	.796	16	92	108	5.7	46	2	39	61	13	27	194	10.2
10	Hodgson, Eva	19-19	571	30.1	53-129	.411	16-46	.348	45-56	.804	16	33	49	2.6	52	1	59	49	8	24	167	8.8
11	Pollard, Nyla	19-15	553	29.1	28-96	.292	10-38	.263	22-32	.688	19	32	51	2.7	44	2	52	33	3	19	88	4.6
15	Krause, Emma	19-2	279	14.7	29-83	.349	21-62	.339	6-11	.545	10	32	42	2.2	31	0	11	8	10	6	85	4.5
05	Jones, Misha	19-3	261	13.7	25-56	.446	17-40	.425	14-16	.875	13	29	42	2.2	38	0	23	16	3	3	81	4.3
25	Rogers, Gabby	19-17	343	18.1	31-70	.443	0-1	.000	9-11	.818	15	34	49	2.6	58	0	5	17	6	14	71	3.7
00	Underwood, Libby	11-0	62	5.6	4-12	.333	0-3	.000	2-4	.500	3	0	3	0.3	1	0	2	6	1	1	10	0.9
21	Eichner, Bailey	12-0	72	6.0	1-9	.111	0-3	.000	1-2	.500	4	11	15	1.3	8	0	2	4	1	3	3	0.3
03	Taylor, Ashley	4-0	11	2.8	0-5	.000	0-4	.000	1-2	.500	0	0	0	0.0	0	0	0	0	0	0	1	0.3
20	Smith, Chandler	9-0	35	3.9	0-1	.000	0-0	.000	1-2	.500	1	7	8	0.9	6	0	1	5	3	0	1	0.1
32	Stover, Caroline	2-0	1	0.5	0-2	.000	0-0	.000	0-0	.000	0	0	0	0.0	0	0	0	0	0	0	0	0.0
Team																						
Total.....		19	3800		415-1040	.399	140-395	.354	243-328	.741	171	444	615	32.4	371	8	286	319	67	152	1213	63.8
Opponents.....		19	3799		418-1048	.399	81-314	.258	280-400	.700	228	484	712	37.5	372	7	218	349	70	168	1197	63.0

TEAM STATISTICS	WM	OPP	Date	Opponent	Score	Att.
SCORING	1213	1197	11/06/18	VCU	L 55-72	684
Points per game	63.8	63.0	11/12/18	HOWARD	w 88-75	564
Scoring margin	+0.8	-	11/17/18	at Loyola	w 65-49	352
FIELD GOALS-ATT	415-1040	418-1048	11/24/18	at Davidson	L 65-76	412
Field goal pct	.399	.399	11/27/18	EAST CAROLINA	w 63-43	574
3 POINT FG-ATT	140-395	81-314	11/30/18	at HARTFORD	L 45-50	649
3-point FG pct	.354	.258	12/02/18	at Fairfield	w 60-54	627
3-pt FG made per game	7.4	4.3	12/05/18	RICHMOND	w 65-55	634
FREE THROWS-ATT	243-328	280-400	12/8/18	at Old Dominion	L 69-83	1802
Free throw pct	.741	.700	12/21/18	at Norfolk State	w 55-44	246
F-Throws made per game	12.8	14.7	12/29/18	GEORGE WASHINGTON	w 73-59	611
REBOUNDS	615	712	* 1/4/19	at Hofstra	w 60-55	323
Rebounds per game	32.4	37.5	* 01/06/19	at Northeastern	L 74-88	540
Rebounding margin	-5.1	-	* 01/11/19	UNCW	w 70-64	657
ASSISTS	286	218	* 01/13/19	COL. OF CHARLESTON	L 54-66	582
Assists per game	15.1	11.5	* 01/20/19	ELON	w 65-60	904
TURNOVERS	319	349	* 1/25/19	at James Madison	L 48-65	2234
Turnovers per game	16.8	18.4	* 1/27/19	at Towson	w 80-69	609
Turnover margin	+1.6	-	* 02/01/19	DELAWARE	L 59-70	634
Assist/turnover ratio	0.9	0.6				
STEALS	152	168				
Steals per game	8.0	8.8				
BLOCKS	67	70				
Blocks per game	3.5	3.7				
ATTENDANCE	5844	7794				
Homegames-Avg/Game	9-649	10-779				
Neutral site-Avg/Game	-	0-0				

Score by Periods	1st	2nd	3rd	4th	Totals
William & Mary	304	300	327	282	1213
Opponents	296	276	326	299	1197



W&M Women's Basketball William & Mary Combined Team Statistics (as of Feb 01, 2019) CAA games only

RECORD:	OVERALL	HOME	AWAY	NEUTRAL
ALLGAMES	4-4	2-2	2-2	0-0
CONFERENCE	4-4	2-2	2-2	0-0
NON-CONFERENCE	0-0	0-0	0-0	0-0

#	Player	gp-gs	min	avg	Total		3-Point		F-Throw		Rebounds				pf	dq	a	to	blk	stl	pts	avg								
					fg-fga	fg%	3fg-fga	3fg%	ft-fga	ft%	off	def	tot	avg																
02	Boggs, Bianca	8-8	270	33.8	42-113	.372	16-37	.432	40-59	.678	16	43	59	7.4	26	2	27	29	4	12	140	17.5								
10	Hodgson, Eva	8-8	257	32.1	24-58	.414	8-20	.400	27-30	.900	10	11	21	2.6	21	1	22	20	6	8	83	10.4								
30	Reynolds, Victoria	8-6	245	30.6	29-60	.483	6-13	.462	12-17	.706	6	29	35	4.4	19	0	15	23	6	14	76	9.5								
12	Birdsong, Harper	8-0	154	19.3	26-76	.342	11-38	.289	11-14	.786	5	12	17	2.1	16	0	6	11	3	3	74	9.3								
05	Jones, Misha	8-2	149	18.6	14-30	.467	12-24	.500	9-10	.900	4	19	23	2.9	21	0	12	9	1	2	49	6.1								
11	Pollard, Nyla	8-8	239	29.9	11-37	.297	5-15	.333	10-14	.714	11	10	21	2.6	17	1	24	12	2	6	37	4.6								
15	Krause, Emma	8-2	105	13.1	10-28	.357	7-22	.318	1-1	1.000	1	9	10	1.3	13	0	2	4	3	2	28	3.5								
25	Rogers, Gabby	8-6	136	17.0	9-25	.360	0-0	.000	4-5	.800	5	15	20	2.5	23	0	3	8	4	7	22	2.8								
00	Underwood, Libby	2-0	10	5.0	0-3	.000	0-1	.000	1-2	.500	2	0	2	1.0	0	0	1	1	0	0	1	0.5								
03	Taylor, Ashley	1-0	3	3.0	0-1	.000	0-1	.000	0-0	.000	0	0	0	0.0	0	0	0	0	0	0	0	0.0								
20	Smith, Chandler	2-0	3	1.5	0-0	.000	0-0	.000	0-0	.000	0	0	0	0.0	2	0	0	1	1	0	0	0.0								
21	Eichner, Bailey	6-0	29	4.8	0-2	.000	0-0	.000	0-0	.000	0	4	4	0.7	4	0	1	2	0	0	0	0.0								
Team											15	15	30												4					
Total.....		8	1600		165-433	.381	65-171	.380	115-152	.757	75	167	242	30.3	162	4	113	124	30	54	510	63.8								
Opponents.....		8	1600		188-455	.413	30-129	.233	131-184	.712	114	211	325	40.6	165	4	89	134	33	65	537	67.1								















TEAM STATISTICS	WM	OPP	Date	Opponent	Score	Att.
SCORING	510	537	* 1/4/19	at Hofstra	w 60-55	323
Points per game	63.8	67.1	* 01/06/19	at Northeastern	L 74-88	540
Scoring margin	-3.4	-	* 01/11/19	UNCW	w 70-64	657
FIELD GOALS-ATT	165-433	188-455	* 01/13/19	COL. OF CHARLESTON	L 54-66	582
Field goal pct	.381	.413	* 01/20/19	ELON	w 65-60	904
3 POINT FG-ATT	65-171	30-129	* 1/25/19	at James Madison	L 48-65	2234
3-point FG pct	.380	.233	* 1/27/19	at Towson	w 80-69	609
3-pt FG made per game	8.1	3.8	* 02/01/19	DELAWARE	L 59-70	634
FREE THROWS-ATT	115-152	131-184	*- CAA game			
Free throw pct	.757	.712				
F-Throws made per game	14.4	16.4				
REBOUNDS	242	325				
Rebounds per game	30.3	40.6				
Rebounding margin	-10.4	-				
ASSISTS	113	89				
Assists per game	14.1	11.1				
TURNOVERS	124	134				
Turnovers per game	15.5	16.8				
Turnover margin	+1.3	-				
Assist/turnover ratio	0.9	0.7				
STEALS	54	65				
Steals per game	6.8	8.1				
BLOCKS	30	33				
Blocks per game	3.8	4.1				
ATTENDANCE	2777	3706				
Home games-Avg/Game	4-694	4-926				
Neutral site-Avg/Game	-	0-0				

Score by Periods	1st	2nd	3rd	4th	Totals
William & Mary	129	121	135	125	510
Opponents	139	116	151	131	537

WILLIAM & MARY RADIO AND TV CHART

NOTES: W&M looks to bounce back as it closes the weekend against Drexel on Sunday afternoon. The Tribe was selected to finish sixth in the CAA by a vote of league head coaches. Senior Bianca Boggs leads the Tribe averaging 16.7 ppg and 7.0 rpg. Redshirt sophomore Harper Birdsong is second on the team with 10.3 points per game, while junior Victoria Reynolds rounds out the double-figure scorers at 10.2 ppg.

RECORD	2018-19	LAST YR	STATS	W&M	OPP	DU	OPP	W&M'S LAST THREE GAMES	
OVERALL	11-8	16-14	FG%	.399	.399	.377	.360	Jan. 25	at James Madison* L, 48-65
CAA	4-4	7-11	FT%	.741	.700	.700	.630	Hodgson 13 pts, Birdsong 12 pts, Boggs 8 pts, 11 reb	
HOME	6-3	9-6	3PT%	.354	.258	.275	.228	Jan. 27	at Towson* W, 80-69
AWAY/NEUTRAL	5-5/0-0	7-7/0-1	POINTS	63.8	63.0	57.1	48.0	Boggs 22 pts, Hodgson 13 pts, Krause 13 pts	
			REBOUNDS	32.4	37.5	35.9	35.2	Feb. 1	DELAWARE* L, 59-70
			TURNOVERS	16.8	18.4	12.4	17.2	Reynolds 14 pts, Birdsong 12 pts, Hodgson 11 pts	

	0 LIBBY UNDERWOOD, G SO./5-9/RYE, N.H./PORTSMOUTH	PPG 0.9 RPG 0.3 APG 0.2	FG% .333 FT% .500 (2-4) 3PT% .000	<ul style="list-style-type: none"> Looking to expand her role during her second season with the Green and Gold. Had six points and added a block and assist against VCU (11/6). Scored a career-high 8 points and added out 3 assists against USC Upstate (12/5/17). Added four points in a rebound against Drexel (1/9/18). Grabbed a rebound in the CAA Quarterfinal against Elon (3/8/18). 	POINTS 8 vs. USC Upstate (12/5/17) REBOUNDS 3 vs. Northeastern (1/21/18) ASSISTS 3 vs. USC Upstate (12/5/17) LAST GAME: DNP - COACH'S DECISION
	1 SYDNEY WAGNER, G SO./5-6/PHOENIXVILLE, PA./SPRING FORD SENIOR HIGH (STETSON)	PPG - RPG - SPG -	FG% - FT% - 3PT% -	<ul style="list-style-type: none"> Transfer from Stetson that has to sit out the 18-19 season due to NCAA Transfer rule. Appeared in 32 games with nine starters for the Hatters last season. Scored a career-high 20 points against Florida. Dropped 18 points against on 5-of-8 from 3-point range against Webber International. Averaged 6.0 ppg and knocked down 42 triples during her freshman season at Stetson. 	POINTS 20 vs. Florida (11/22/17) REBOUNDS 5 vs. Lipscomb (2/19/18) ASSISTS 3 vs. Lipscomb (2/19/18) LAST GAME: DNP - TRANSFER RULE
	2 BIANCA BOGGS, G SR./5-8/WALDORF, MD./ST. MARY'S RYKEN	PPG 16.7 RPG 7.0 APG 3.8	FG% .410 FT% .714 (75-105) 3PT% .354	<ul style="list-style-type: none"> Named team captain for the 2018-19 season. Tabbed CAA Player of the Week for the week of Dec. 31. Has 14 20-point games, including seven 20-point games this season. Scored a career-high 33 points in a win at St. Francis (12/2/17). Ranks 12 in school history with 1,242 career points. 	POINTS 33 vs. St. Francis (Pa.) (12/2/17) REBOUNDS 11 (2x) last time vs. ECU (11/27/18) ASSISTS 8 at Delaware (2/9/18) LAST GAME: 11 PTS, 8 REB, 5 AST
	3 ASHLEY TAYLOR, G JR./6-0/CHARLOTTESVILLE, VA./ST. ANNE'S BELLEFIELD	PPG 0.3 RPG 0.0 APG 0.0	FG% .000 FT% .500 (1-2) 3PT% .000	<ul style="list-style-type: none"> Has seen action in 21 games during her career with the Tribe. Made her first career basket, a 3-pointer, in the win against USC Upstate (12/5/17). Grabbed a pair of rebounds and added an assist against Loyola (11/25/17). Hit a basket and grabbed a board at Elon (3/1/18) 	POINTS 3 vs. USC Upstate (12/5/17) REBOUNDS 2 vs. Loyola (11/25/17) ASSISTS 1 (4x) last time at Charleston (12/29/17) LAST GAME: DNP - COACH'S DECISION
	5 MISHA JONES, G/F SR./5-9/MANASSAS PARK, VA./BATTLEFIELD	PPG 4.3 RPG 2.2 APG 1.2	FG% .446 FT% .875 (14-16) 3PT% .425	<ul style="list-style-type: none"> Named a team captain for the second straight season this year. Matched a career-high with nine points on three, 3-pointers vs. UNCW (1/11). Grabbed a career-high eight boards with eight points in the win at Towson (1/27). Made her first career start against George Washington (12/28) and scored four points. Scored a career-high nine points, including seven straight points in the win vs. Howard. 	POINTS 9 vs. Howard (11/12/18) REBOUNDS 8 at Towson (1/27/19) ASSISTS 4 (3x) at Old Dominion (12/8/18) LAST GAME: 3 PTS, 2 REB IN 20 MINS
	10 EVA HODGSON, G FR./5-9/RINDGE, N.H./NEW HAMPTON SCHOOL	PPG 8.8 RPG 2.6 APG 3.1	FG% .411 FT% .804 (45-56) 3PT% .348	<ul style="list-style-type: none"> Named CAA Rookie of the Week for the week of Dec. 3 and Jan. 7. Scored a career-high 18 points in the CAA opening win at Hofstra (1/4). Had 16 points, four rebounds, two assists, and two steals at Northeastern (1/6). Netted 13 pts and grabbed a CH six boards with five fives in the win at Towson (1/20). Her parents and two brothers all played Division III basketball. 	POINTS 18 at Hofstra (1/4/19) REBOUNDS 6 at Towson (1/27/19) ASSISTS 6 (3x) last time vs. Elon (1/20/19) LAST GAME: 11 PTS, 1 REB, 4 AST
	11 NYLA POLLARD, G SO./5-9/VIRGINIA BEACH, VA./PRINCESS ANNE	PPG 4.6 RPG 2.7 APG 2.7	FG% .292 FT% .688 (22-32) 3PT% .263	<ul style="list-style-type: none"> Made her first start of the year & had a double-double (10 pts, 12 reb) vs. ECU (11/27). Scored eight points, two rebounds, and four assists in the win at Towson (1/27). Had nine points and added two rebounds, four assists, and a steal at Loyola (11/17). Chipped in nine points and a career-high six helpers in the win vs. UNCW (1/11). Scored a career-high 14 points, four assists, three rebounds against Upstate (12/5/17). 	POINTS 14 vs. USC Upstate (12/5/17) REBOUNDS 12 vs. East Carolina (11/27/18) ASSISTS 5 (2x) last time vs. ODU (12/17/17) LAST GAME: 3 PTS, 1 REB, 4 AST
	12 HARPER BIRDSONG, G R-SO./5-10/SUFFOLK, VA./NANSEMOND SUFFOLK (GW)	PPG 10.3 RPG 1.7 APG 1.1	FG% .398 FT% .727 (24-33) 3PT% .380	<ul style="list-style-type: none"> Set a career-high with 18 points and four assists at Old Dominion (12/8). Notched 16 points and grabbed five rebounds at Northeastern (1/6). Scored 16 points and had three steals against George Washington (12/28). Had 14 points, a career-high five rebounds, and one assist at Norfolk State (12/21). Appeared in nine games during her freshman season at George Washington. 	POINTS 18 vs. Old Dominion (12/8/18) REBOUNDS 5 (2x) last time vs. Charleston (1/13/19) ASSISTS 4 at Old Dominion (12/8/18) LAST GAME: 12 PTS, 1 REB, 1 AST
	15 EMMA KRAUSE, F FR./6-1/PLANTATION, FLA./CARDINAL GIBBONS	PPG 4.5 RPG 2.2 BPG 0.5	FG% .349 FT% .545 (6-11) 3PT% .339	<ul style="list-style-type: none"> Named CAA Rookie of the Week for the week of Dec. 24. Made her first career start and played 12 minutes against UNCW (1/11). Scored 13 points and grabbed four rebounds in the win at Towson (1/27). Netted a career-high 14 points on four 3-pointers against Howard (11/12). Hit three 3-pointers for nine points in the win against Elon (1/20). 	POINTS 14 vs. Howard (11/12/18) REBOUNDS 5 vs. Old Dominion (12/8/18) ASSISTS 3 at Loyola (11/17/18) LAST GAME: 3 PTS, 2 REB IN 9 MINS
	20 CHANDLER SMITH, C SR./6-3/PORT TOBACCO, MD./ST. MARY'S-RYKEN	PPG 0.1 RPG 0.9 BPG 0.4	FG% .000 FT% .500 (1-2) 3PT% -	<ul style="list-style-type: none"> Named a team captain for her senior season. Key reserve in the post that has appeared in 62 career games. Tied a career-high with four points in a win at St. Francis (12/1/17). Grabbed a career-high five rebounds at Hofstra (2/7/17). Rejected 27 shots during her career. 	POINTS 4 (4x) last time at SFU (12/2/17) REBOUNDS 5 vs. Hofstra (2/7/17) BLOCKS 3 vs. Mount St. Mary's (12/18/16) LAST GAME: DNP - COACH'S DECISION
	21 BAILEY EICHNER, G/F SO./6-1/CUDAHY, WISC./CUDAHY	PPG 0.3 RPG 1.3 APG 0.2	FG% .111 FT% .500 (1-2) 3PT% .000	<ul style="list-style-type: none"> Looking to expand her role this year after seeing action in 17 games last year. Grabbed a career-high six rebounds at Old Dominion (12/8/18). Had a career-high four points and added a career-high five rebounds vs. JMU (2/2/18). Made her collegiate debut in last year's season opener at Howard (11/11/17). Three sport athlete in high school playing basketball, volleyball, and track & field. 	POINTS 4 vs. James Madison (2/2/18) REBOUNDS 6 at Old Dominion (12/8/18) ASSISTS 2 vs. Hofstra (1/19/18) LAST GAME: DNP - COACH'S DECISION
	25 GABBY ROGERS, C SO./6-1/DALLAS, TEXAS/BISHOP LYNCH	PPG 3.7 RPG 2.6 SPG 0.7	FG% .443 FT% .818 (9-11) 3PT% .000	<ul style="list-style-type: none"> Center that has started 16 games this season for the Tribe. Had eight points and tied a career-high with five rebounds in the win at Fairfield (12/2). Scored a career-high 10 points and a steal at Davidson (11/24). Notched a then-season-high eight points in the win at Loyola (11/17). Made her first career start on opening night against VCU (11/6) scoring four points. 	POINTS 10 at Davidson (11/24/18) REBOUNDS 5 (4x) vs. Charleston (1/13/19) STEALS 3 (3x) last time at Hofstra (1/4/19) LAST GAME: 2 PTS, 2 REB, 1 STL
	30 VICTORIA REYNOLDS, F JR./5-10/FAIRFAX, VA./ARCHBISHOP SPALDING	PPG 10.2 RPG 5.7 SPG 1.4	FG% .476 FT% .796 (43-53) 3PT% .481	<ul style="list-style-type: none"> Recorded a double-double with 15 points and 15 rebounds against ECU (11/27/18). Notched a season-high 17 points with 7 rebs vs. UNCW (1/11). Scored 14 points and matched a career-high with two 3-pointers against UofR (12/5/18). Poured in a career-high 22 points in the win at St. Francis (12/2/17). Grabbed 18 boards in the win against Charleston (1/26/18). 	POINTS 22 vs. St. Francis (Pa.) (12/2/17) REBOUNDS 18 vs. Charleston (1/26/18) STEALS 7 vs. Hofstra (1/28/18) LAST GAME: 14 PTS, 6 REB, 3 AST
	32 CAROLINE STOVER, C FR./6-3/PLYMPTON, MASS./CARDINAL SPELLMAN	PPG 0.0 RPG 0.0 APG 0.0	FG% .000 FT% - 3PT% -	<ul style="list-style-type: none"> Made her collegiate debut in the Tribe's win over Loyola. Freshman post player looking to break into the post rotation this season. Played four seasons of varsity basketball at Cardinal Spellman. Ranked as the No. 131 in her class by Blue Star. Tabbed to the Catholic Central League All-Star team. 	POINTS - REBOUNDS - STEALS - LAST GAME: DNP - COACH'S DECISION

NOTES: