



## WILLIAM &amp; MARY

MEDIA RELATIONS DIRECTOR: Andrew Phillips / PHONE: (757) 221-3344 / CELL: (804) 840-4439 / EMAIL: atphillips01@wm.edu

## TRIBE BY THE NUMBERS

3

For the fourth time this season, Emma Krause hit, at least, three 3-pointers at Towson on Sunday. She was in double-figures with 13 points for the second time this year.

8

Senior Misha Jones set a new career-high with eight rebounds in the win at Towson on Sunday. Jones has seen her minutes increase to 20.4 mpg. in the last five contests.

14

Senior Bianca Boggs now has 14 career 20-point performances. She is one away from moving into a tie for 7th in W&M history.

14.9

W&M leads the CAA with 14.9 assists per game. The Tribe has 269 assists this season.

55

Eva Hodgson has recorded 55 assists this season, which is tied for 9th among W&M freshman. She needs eight more to move into sole possession of 5th place.

62

The senior class – Bianca Boggs, Misha Jones, & Chandler Smith – have won 62 games. They are just five wins away from becoming the winningest class in school history.

70

70 seems to be a magic number under Swanson. W&M has reached that mark 43 times under Swanson, and has posted a 39-6 mark when it scores more than 70 points.

1231

Boggs now has 1,231 career points that ranks her 12th in school history. The senior needs 87 more points to move into the top 10 passing Karen Jordan '87 & Janine Aldridge '13.

## WHEN REFERENCING WILLIAM &amp; MARY AND TRIBE:

**William & Mary:** preferred in all but formal treatments  
**W&M:** most informal, use as second reference or on scorebug  
**College of William & Mary:** preferred formal treatment  
**Do not use:** WM, William and Mary, College of William and Mary, The College of William and Mary, The College

The William & Mary Athletics official nickname is the Tribe. While the Griffin is the official mascot of William & Mary Tribe Athletics, do not reference teams or the school as the Griffins.

## GAME

19

## WILLIAM &amp; MARY (11-7, 4-3 CAA) vs. DELAWARE (8-11, 3-4 CAA)

Friday, Feb. 1, 2019 | 7:00 PM | Williamsburg, Va. | Kaplan Arena  
Video: TribeAthletics.TV | Live Stats: TribeAthletics.com

## SERIES HISTORY

## ALL-TIME

Delaware leads 24-8

Last: Delaware, 61-52 (2/23/18) (Kaplan Arena)

## AT W&amp;M

Delaware leads 12-3

Last: Delaware, 61-52 (2/23/18) (Kaplan Arena)

## W&amp;M NEWS AND NOTES

- The William & Mary women's basketball team returns home for the first of two games this weekend as it welcomes Delaware to Kaplan Arena on Friday, Feb. 1. Tip time between the Tribe and the Blue Hens is set for 7 p.m.

- W&M and Delaware meet for the 33rd time in series history with the Blue Hens leading the series 24-8. The Blue Hens swept the regular season series last year, including a 61-52 triumph at Kaplan Arena on Feb. 23. W&M's last win in the series came in the 2017 CAA Quarterfinal.

- The Tribe has limited its last five opponents to 25-percent, or worse, from 3-point range, including a season-low 6-percent from 3-point range in the win over Elon. W&M has lowered its defensive 3-point percentage to 25-percent, which is second in the CAA, but fifth in the NCAA.

- W&M has posted a perfect 7-0 record coming off of a loss this season with its most recent triumph coming in an 80-69 victory at Towson Sunday.

- The Tribe has moved its free throw percentage back to first in the CAA shooting 73.7-percent from the stripe. The Tribe shot a perfect 16-for-16 from the line at James Madison on Jan. 25, which was the first time the Tribe was perfect from the line (minimum 8 attempts) since 2016. In the last two games a Tribe player (Misha Jones and Eva Hodgson) has shot perfect from the line with a minimum of five attempts.

- The Green and Gold has outscored its opponents 574-537 in the first half games this season, but has been out scored 590-580 in the second half of games. W&M is 11-0 when it leads at the break, but is 0-7 when it trails or is tied at the half.

- Senior Misha Jones has heated up over the last five games as she is averaging 7.4 points per contest. More impressively, Jones has hit 9-of-her-last-18 3-point attempts, and is now shooting 42.1-percent from range this season.

- Redshirt sophomore Harper Birdsong jumped back up to fourth in the CAA in 3-point shooting percentage this season as she is hitting 39.8-percent (35-for-88) from range. Birdsong is second on the team averaging 10.2 points per game this year, and has been in double-digits 11 times.

- The Green and Gold is hitting 3-pointers at the highest clip under Ed Swanson this season, and has had five, or more, 3-pointers in 16 of its 18 games. W&M leads the CAA hitting 7.4 3-pointers per game. That mark is two more than the next best average in the six-years under head coach Ed Swanson. As a team, the Tribe is hitting 35.3-percent from range, which is third in the CAA. Furthermore, W&M has hit more than 10 3-pointers in five games this season.

- W&M claimed its fourth CAA weekly award as freshman Eva Hodgson earned her second CAA Rookie of the Week award after averaging 17.0 points per game on 10-of-18 from the floor for the week of Jan. 7. Tribe senior Bianca Boggs was named the CAA Player of the Week for the week of Dec. 31, while freshman Emma Krause earned rookie of the week on Dec. 24.

- Boggs was announced as one of 30 national candidates for the Senior CLASS Award. The Senior CLASS Award focuses on the total student-athlete and encourages students to use their platform in athletics to make a positive impact as leaders in their communities. Boggs was the lone player from CAA women's basketball honored, and along with men's basketball player Paul Rowely, W&M was one of three DI schools with a candidate for the both the men's and women's Senior CLASS Award.

- Hodgson has started every game this season and the early returns on the rookie point guard have been good. The freshman has been in double-figures in eight games, and is averaging 8.7 points per game (most among CAA freshman), with 2.7 rebounds, and 3.1 helpers per contest. Hodgson scored a career-high 18 points in the CAA opener at Hofstra, and is seventh in the CAA with a 1.1 assist/turnover ratio.

- Boggs has been in double-figures in 15 of 18 games this season, and has accomplished that feat in 40 of her last 48 contests. Boggs was selected to the Preseason All-CAA First-Team after a breakout junior season. Earlier this year, she was named one of 30 candidates for the Senior CLASS Award. The senior captain leads the team with 17.0 points per night, and has added 6.9 rebounds and 3.7 assists per night. She is one of four players nationally to lead her team in points, rebounds, assists, steals, and blocks as of Jan. 25. The senior has turned in 14, 20-point career games, which ranks her 10th all-time in school history.

	Nov. 6	VCU	L, 55-72	Senior Bianca Boggs scored 15 points, but the Tribe couldn't overcome an early scoring drought falling to in-state rival VCU on opening night.
	<b>NOV. 12</b>	<b>HOWARD</b>	<b>W, 88-75</b>	Four players scored in double-figures as the Tribe picked up its first victory of the season. Senior Bianca Boggs led the Tribe with 26 points, nine rebounds, and seven assists.
	Nov. 17	at Loyola (Md.)	W, 65-49	The Tribe led throughout as it won its first road game of the season with a convincing 65-49 decision at Davidson. Boggs (14) and Reynolds (10) were both in double-figures.
	Nov. 24	at Davidson	L, 65-76	W&M fought all afternoon, but Davidson pulled away down the stretch as it fell to Davidson 76-65. Bianca Boggs notched a double-double with 18 points and 10 rebs.
	<b>NOV. 27</b>	<b>ECU</b>	<b>W, 63-43</b>	Both Victoria Reynolds and Nyla Pollard recorded a double-double as the Tribe cruised to a 20-point victory after previously unbeaten East Carolina.
	Nov. 30	at Hartford	L, 45-50	W&M couldn't overcome a cold shooting night as it shot just 22.2-percent (12-of-54) from the floor. Freshman Eva Hodgson led the team with a career-high 14 points.
	Dec. 2	at Fairfield	W, 60-54	The Tribe outscored the Stags 6-0 in the final moments to pick up its fourth win of the season. Senior Bianca Boggs scored a game-high 22 to pace the Tribe.
	<b>Dec. 5</b>	<b>RICHMOND</b>	<b>W, 65-55</b>	W&M never trailed as it picked up its third straight win against Richmond. Freshman Eva Hodgson (15 pts) and Harper Birdson (13 pts) both had career-highs.
	Dec. 8	at Old Dominion	L, 69-83	ODU snapped a three-game losing streak to the Tribe at home. Redshirt sophomore Harper Birdsong led the Tribe with a career-high 18 points.
	Dec. 21	at Norfolk State	W, 55-44	The Tribe used a strong defensive effort to gut out a 55-44 road win at Norfolk State following a 13-day lay-off. Sophomore Harper Birdsong had a game-high 14 points off of the bench.
	<b>DEC. 29</b>	<b>GEORGE WASHINGTON</b>	<b>W, 73-59</b>	Senior Bianca Boggs recorded her second double-double with 26 points and 10 rebounds as the Tribe topped GW in a wire-to-wire win, 73-59.
	Jan. 4	at Hofstra*	W, 60-55	Senior Bianca Boggs had another double-double (22 pts, 10 reb) and freshman Eva Hodgson had a career-high 18 points as W&M won its second-ever game at Hofstra.
	Jan. 6	at Northeastern*	L, 74-88	Three scored in double-figures, but W&M couldn't overcome a big second half from Northeastern. Senior Bianca Boggs recorded her third straight 20-point game with 21.
	<b>JAN. 11</b>	<b>UNCW</b>	<b>W, 70-64</b>	W&M closed the first quarter on 17-0 run and never looked back as it picked up a 70-64 victory over UNCW. Bianca Boggs had 25 points and Victoria Reynolds had 17.
	<b>JAN. 13</b>	<b>CHARLESTON</b>	<b>L, 54-66</b>	The Tribe tied the game three times, but couldn't overcome a fiery Charleston team. Senior Bianca Boggs scored a game-high 18 points in the contest.
	<b>JAN. 20</b>	<b>ELON *</b>	<b>W, 65-60</b>	W&M used a 15-3 run to end third quarter and start the fourth to topple defending CAA Champion Elon. Bianca Boggs and Harper Birdsong led the team with 13 points.
	Jan. 25	at James Madison *	L, 65-48	The Tribe couldn't shake a tough shooting night and a slow start as it fell at James Madison. Freshman Eva Hodgson led the Tribe with 13 points.
	Jan. 27	at Towson*	W, 80-69	Four scored in double-figures as the Tribe became the first team to win at SECU this arena with an 80-69 triumph. Senior Bianca Boggs finished with a game-high 22 points.
	<b>FEB. 1</b>	<b>DELAWARE*</b>	<b>7 PM</b>	The Green and Gold opens February as it welcomes Delaware to Kaplan Arena. W&M is looking to snap a two-game skid against the Blue Hens.
	<b>FEB. 3</b>	<b>DREXEL*</b>	<b>2 PM</b>	W&M plays on its 26th-consecutive Super Bowl Sunday as it welcomes Drexel for the Golden Game. The Tribe is 3-2 under Swanson on Super Sunday.
	Feb. 8	at Charleston*	12 PM	The Tribe opens a season-long three-game road swing with an afternoon game at Charleston. W&M is 3-2 at Charleston since the Cougars joined the league.
	Feb. 10	at UNCW*	2 PM	W&M heads to the Port City to close the weekend. The Tribe has won its last two games against UNCW at Trask Coliseum.
	Feb. 17	at Elon *	1 PM	The Tribe heads to the brand new Schar Center as it closes out the regular season with Elon. The Phoenix have topped W&M in the last two CAA Tournaments.
	<b>FEB. 22</b>	<b>TOWSON*</b>	<b>7 PM</b>	Towson and W&M close the regular season in Williamsburg this year. The Tigers squeaked out a one-point victory in its last trip to Kaplan Arena.
	<b>FEB. 24</b>	<b>JAMES MADISON*</b>	<b>2 PM</b>	W&M will raise breast cancer awareness as it welcomes James Madison to Kaplan Arena. The Dukes have won the last two meetings in Kaplan Arena.
	March 1	at Drexel*	7 PM	Drexel and W&M meet for the final time in the regular season when the Tribe travels to Philly. The Dragons are the defending CAA regular season champion.
	March 3	at Delaware*	2 PM	The Tribe heads to the site of the 2019 CAA Tournament when it travels to Delaware. W&M is 3-2 under Ed Swanson at Delaware during his tenure.
	<b>MARCH 7</b>	<b>NORTHEASTERN*</b>	<b>7 PM</b>	The Green and Gold plays host to Northeastern in its penultimate regular season game. The Tribe has a seven-game winning streak against the Huskies in Williamsburg.
	<b>MARCH 9</b>	<b>HOFSTRA*</b>	<b>2 PM</b>	W&M closes the regular season with the team it started CAA play against. The Tribe picked up a 63-53 victory over the Pride at Kaplan Arena last year.
	Mar. 13-16	CAA Championship		Delaware hosts the 2019 CAA Tournament at the Bob Carpenter Center in Newark, Del. The event runs from March 13-16.



## GENERAL INFORMATION

**Name:** College of William & Mary  
**Location:** Williamsburg, Va.  
**Founded:** 1693 (2nd oldest college in U.S.)  
**Enrollment** (includes graduate): 8,617  
**Nickname:** Tribe  
**Colors:** Green, Gold and Silver  
**Arena (capacity):** Kaplan Arena (8,600)  
**Affiliation:** NCAA Division I  
**Conference:** Colonial Athletic Association (CAA)  
**President:** Katherine A. Rowe (Carleton, 1984)  
**Chancellor:** Robert M. Gates (William & Mary, 1965)  
**Director of Athletics:** Samantha K. Huge (Gordon, 1992)

## LAST GAME STARTERS

2

## BIANCA BOGGS

Sr. • G • 5-9

Waldorf, Md./St. Mary's Ryken

G-GS	PPG	RPG	APG	FG%	3P%	FT%	STL	BLK
18-18	17.0	6.9	3.7	.417	.351	.711	41	13

- Named team captain for the 2018-19 season.
- Tabbed CAA Player of the Week for the week of Dec. 31.
- Has 13 20-point games, including six 20-point games this season.
- Scored a career-high 33 points in a win at St. Francis (12/2/17).
- Ranks 13th in school history with 1,188 career points.

10

## EVA HODGSON

Fr. • G • 5-9

Rindge, N.H./New Hampton School

G-GS	PPG	RPG	APG	FG%	3P%	FT%	STL	BLK
18-18	8.7	2.7	3.1	.410	.333	.788	24	7

- Named CAA Rookie of the Week for the week of Dec. 3 and Jan. 7.
- Scored a career-high 18 points in the CAA opening win at Hofstra (1/4).
- Had 16 points, four rebounds, two assists, and two steals at Northeastern (1/6).
- Set career-highs against Richmond (12/5) in points (15) and assists (6).
- Her parents and two brothers all played Division III basketball.

## WOMEN'S BASKETBALL INFORMATION

**Head Coach:** Ed Swanson (Sacred Heart, 1989)  
**Record at W&M:** 85-84 (sixth season)  
**Career Record:** 491-348 (29th season)  
**Assistant Coach:** Lynne-Ann Kokoski (Bryant, 2008)  
**Assistant Coach:** Chanel Murchison (William & Mary, 2013)  
**Assistant Coach:** Tierra Rudd (Winston-Salem, 2008)  
**Dir. of Operations:** Michelle Kurowski (UMBC, 2011)  
**2017-18 Record (CAA):** 16-14 (7-11/6th)  
**Starters Returning/Lost:** 3/2  
**Letterwinners Returning/Lost:** 10/4  
**First Year of Basketball:** 1919-20  
**All-Time Record:** 665-960-9  
**WNIT Appearances:** None  
**NCAA Appearances:** None

11

## NYLA POLLARD

So. • G • 5-9

Virginia Beach, Va./Princess Anne

G-GS	PPG	RPG	APG	FG%	3P%	FT%	STL	BLK
18-14	4.7	2.8	2.7	.300	.250	.688	17	3

- Made her first start of the year & had a double-double (10 pts, 12 reb) vs. ECU (11/27).
- Had nine points and added two rebounds, four assists, and a steal at Loyola (11/17).
- Chipped in nine points and a career-high six helpers in the win vs. UNCW (1/11).
- Scored a career-high 14 points, four assists, three rebounds against Utopia (12/5/17).

25

## GABBY ROGERS

So. • C • 6-3

Dallas, Texas/Bishop Lynch

G-GS	PPG	RPG	APG	FG%	3P%	FT%	STL	BLK
18-16	3.8	2.6	0.3	.462	.000	.818	13	6

- Center that has started 14 games this season for the Tribe.
- Had eight points and tied a career-high with five rebounds in the win at Fairfield (12/2).
- Scored a career-high 10 points and a steal at Davidson (11/24).
- Notched a then-season-high eight points in the win at Loyola (11/17).
- Made her first career start on opening night against VCU (11/6) scoring four points.

30

## VICTORIA REYNOLDS

Jr. • F • 5-10

Fairfax, Va./Archbishop Spalding

G-GS	PPG	RPG	APG	FG%	3P%	FT%	STL	BLK
18-15	10.0	5.7	3.1	.470	.480	.808	24	11

- Recorded a double-double with 15 points and 15 rebounds against ECU (11/27/18).
- Notched a season-high 17 points with 7 reb vs. UNCW (1/11).
- Scored 14 points and matched a career-high with two 3-pointers against UofR (12/5/18).
- Poured in a career-high 22 points in the win at St. Francis (12/2/17).
- Grabbed 18 boards in the win against Charleston (1/26/18).

## TRIBE TRENDS

WILLIAM & MARY RECORD	
Overall.....	11-7
CAA Games.....	4-3
Leads at halftime.....	11-0
Trails at halftime.....	0-6
Tied at Halftime.....	0-1
Home.....	6-2
Away.....	5-5
Neutral.....	0-0

BY MONTH	
November.....	3-3
December.....	4-1
January.....	4-3
February.....	0-0
March.....	0-0

SCORING...	
W&M scores fewer than 40 pts.....	0-0
W&M scores 40-49.....	0-2
W&M scores 50-59.....	1-2
W&M scores 60-69.....	6-2
W&M scores 70-79.....	2-1
W&M scores 80+.....	2-0
Opp. scores fewer than 40 pts.....	0-0
Opp. scores 40-49.....	3-0
Opp. scores 50-59.....	5-1
Opp. scores 60-69.....	3-2
Opp. scores 70-79.....	0-2
Opp. scores 80+.....	0-2

FROM THE FIELD ...	
W&M shoots below 35%.....	0-3
W&M shoots better than 35%.....	11-4
W&M shoots better than 40%.....	8-2
W&M shoots better than 45%.....	9-1
W&M shoots better than 50%.....	1-0

FINAL MARGIN	
1-3 points.....	0-0
4-7 points.....	4-1
8-10 points.....	1-0
11-15 points.....	4-4
16+ points.....	2-2
In Overtime.....	0-0

BATTLE OF THE BOARDS	
Outrebounding opponent.....	3-0
Outrebounded by opponent.....	7-7
Rebounds are even.....	1-0

DOWN TO THE WIRE	
Leading with 5:00 left.....	9-0
Trailing with 5:00 left.....	1-7
Tied with 5:00 left.....	1-0

LAYING IT ON THE LINE...	
W&M attempts more free throws.....	4-1
Opp. attempts more free throws.....	6-6
Free Throws are even.....	1-0

JERSEY COLOR	
White.....	5-2
Green.....	4-3
Gold.....	2-2
Pink.....	0-0

STRENGTH OF OPPOSITION	
vs. Top 25 teams.....	0-0
vs. teams with a winning record.....	4-3
vs. teams .500 record.....	1-0
vs. teams with a losing record.....	6-3

STREAKING	
Coming off of a win.....	4-6
Coming off of a loss.....	7-0
Longest Winning Streak.....	W3
Longest Losing Streak.....	L1
Current Streak.....	W1

## RESERVES

POS.	NO.	NAME	HT.	CL.	G-GS	PPG	RPG	APG	FG%	3P%	FT%	MISC.
G	0	Libby Underwood	5-9	So.	11-0	0.9	0.3	0.2	.333	.000	.500	1 stl
NOTE: Scored six points in the second half of the game versus VCU (11/6).												
G	1	Sydney Wagner	5-6	So.	-	-	-	-	-	-	-	-
NOTE: Transfer from Stetson that has to sit out the 2018-19 season due to NCAA Transfer Rule												
G	3	Ashley Taylor	5-8	Jr.	4-0	0.3	0.0	0.0	.000	.000	.500	-
NOTE: Has appeared in 24 career games in career.												
G/F	5	Misha Jones	5-9	Sr.	18-3	4.3	2.2	1.3	.444	.421	.875	3 stl
NOTE: Matched a career-high with nine points vs. UNCW (1/11)												
G	12	Harper Birdsong	5-10	R-So.	18-4	10.2	1.7	1.1	.394	.398	.710	12 stl
NOTE: First player off of the bench; Scored a career-high 18 at ODU (12/5).												
F	15	Emma Krause	6-2	Fr.	18-2	4.7	2.2	0.6	.346	.333	.545	9 blk
NOTE: Had 14 points in the win against Howard (11/12); Had nine against Elon (1/20).												
C	20	Chandler Smith	6-3	Sr.	9-0	0.1	0.9	0.1	.000	-	.500	3 blk
NOTE: Named a team captain for 18-19; Reserve post that has appeared in 60 career games.												
G/F	21	Bailey Eichner	6-1	So.	12-0	0.3	1.3	0.2	.111	.000	.500	3 stl
NOTE: Had a career-high six rebounds at ODU (12/5)												
C	32	Caroline Stover	6-3	Fr.	2-0	0.0	0.0	0.0	.000	.000	.000	-
NOTE: Ranked as the No. 131 recruit in her class on BlueStar												

## W&amp;M INDIVIDUAL SUPERLATIVES

Double-Digit Games					10-Assist Games				
16-17	17-18	18-19	Career		16-17	17-18	18-19	Career	
Bianca Boggs	8	25	15	57					
Victoria Reynolds	4	15	11	30	<b>Double-Doubles</b>	<b>16-17</b>	<b>17-18</b>	<b>18-19</b>	<b>Career</b>
Harper Birdsong	-	-	11	11	Bianca Boggs	-	1	3	5
Eva Hodgson	-	-	8	8	Victoria Reynolds	-	1	1	2
Nyla Pollard	-	3	1	4	Nyla Pollard	-	-	1	1
Emma Krause	-	-	2	2					
Gabby Rogers	-	-	1	1	<b>Leading Scorer (times):</b>	- Boggs (12), Birdsong (3), Hodgson (3), Reynolds (1)			
					<b>Leading Rebounder (times):</b>	- Reynolds (9), Boggs (8), Eichner (1), Hodgson (1), Jones (1), Pollard (1), Rogers (1)			
<b>20-Point Games</b>	<b>16-17</b>	<b>17-18</b>	<b>18-19</b>	<b>Career</b>	<b>Leading Assists (times):</b>	- Boggs (9), Hodgson (7), Pollard (4), Reynolds (2), Birdsong (1), Jones (1)			
Bianca Boggs	-	7	7	14	<b>Charges (times):</b>	- Jones (12), Rogers (6), Eichner (6), Hodgson (5), Birdsong (1)			
Victoria Reynolds	-	1	-	1					
					<b>Three-Point Plays (Made/Attempted):</b>	- Birdsong (1/1), Hodgson (1/1), Jones (1/1), Krause (1/1), Rogers (1/1), Boggs (14/16), Reynolds (1/2), Pollard (0/2)			
<b>30-Point Games</b>	<b>16-17</b>	<b>17-18</b>	<b>18-19</b>	<b>Career</b>	<b>Four-Point Plays (Made/Attempted):</b>	- Jones (1/1)			
Bianca Boggs	-	1	-	1					
<b>10-Rebound Games</b>	<b>16-17</b>	<b>17-18</b>	<b>18-19</b>	<b>Career</b>					
Victoria Reynolds	-	4	3	7					
Bianca Boggs	1	1	4	6					



Team

<b>W&amp;M scored 80+ points</b>	<b>1/27/2019</b>	<b>80 (80-69, W at Towson)</b>
<b>W&amp;M scored 85+ points</b>	<b>11/12/2018</b>	<b>88 (88-75, W vs. Howard)</b>
W&M scored 90+ points	12/2/2017	92 (92-86, W at St. Francis (Pa.))
W&M scored 95+ points	2/16/2014	97 (97-44 W, vs. UNCW)
<b>Opponent scored 80+</b>	<b>1/6/2019</b>	<b>88 (74-88, L at Northeastern)</b>
Opponent scored 85+	2/2/2017	86 (41-86, L vs. James Madison)
Opponent scored 90+	11/17/2017	92 (92-81 L, at St. John's)
<b>W&amp;M grabbed 50+ rebounds</b>	<b>11/27/2018</b>	<b>58 (63-43 W, vs. East Carolina)</b>
W&M grabbed 60+ rebounds	12/21/2006	60 (73-58 W, at Norfolk State)
<b>Held an Opponent to 50 pts. or less</b>	<b>12/21/2018</b>	<b>44 (55-44, W at Norfolk State)</b>
Held an Opponent to 40 pts. or less	12/3/2016	39 (67-39, W vs. Richmond)
<b>W&amp;M was held under 50 pts.</b>	<b>1/25/2019</b>	<b>48 (48-65 L, at James Madison)</b>
<b>Shot 50% from the field</b>	<b>11/17/2018</b>	<b>51.0% (26-for-51) (65-49, W at Loyola)</b>
<b>Shot 80-89% from the foul line (8 or more attempts)</b>	<b>1/11/2019</b>	<b>81.8% (18-for-22) (70-64, W vs. UNCW)</b>
Shot 90-99% from the foul line (8 or more attempts)	2/9/2018	90.0 (9-for-10) (59-68, L at Delaware)
<b>Shot 100% from the foul line (8 or more attempts)</b>	<b>1/25/2019</b>	<b>100% (16-for-16) (48-65, L at James Madison)</b>
<b>Had a 20-pt. win</b>	<b>11/27/2018</b>	<b>20 (63-43 W, vs. East Carolina)</b>
Had a 30-pt. win	11/28/2016	34 (W, 82-48 vs. Delaware State)
Had a 40-pt. win	2/16/2014	53 (97-44 W, vs. UNCW)
Had a 50-pt. win	2/16/2014	53 (97-44 W, vs. UNCW)
Had a 20-pt. loss	3/1/2018	21 (L, 61-82 at Elon)
Had a 30-pt. loss	2/2/2018	45 (L, 41-86 vs. James Madison)
An overtime win	11/21/2017	71-65, W at East Carolina
An overtime loss	1/9/2018	58-65, L vs. Drexel
A double-overtime game	2/6/2015	72-68, W at Drexel
A triple-overtime game	11/29/1999	77-83, L at VCU
10-game winning streak	2016-17	11 (11/18/2016-1/6/17)
5-game winning streak	2017-18	7 (11/21/2017-12/21/2017)
5-game losing streak	2017-18	7 (2/16/2018-11/12/2018)
10-game losing streak	2012-13	11 (11/25/2012-1/20/2013)

Individual

<b>20-24 pts.</b>	<b>22, Bianca Boggs at Towson, 1/27/19</b>
<b>25-29 pts.</b>	<b>25, Bianca Boggs vs. UNCW, 1/11/19</b>
30-34 pts.	33, Bianca Boggs at St. Francis (Pa.), 12/2/17
35-39 pts.	39, Lynn Norenberg at Virginia Wesleyan, 11/15/80
40+ pts.	53, Bebe Fisher vs. Norfolk Division, 2/13/52
5 players in double figures	Bianca Boggs (26), Victoria Reynolds (15), Abby Rendle (12), Nari Garner (11), Jenna Green (10) vs. College of Charleston, 1/26/18
Two players with 20 pts. or more	Jenna Green (22) and Bianca Boggs (21) at Towson, 2/4/18
<b>Player with 10-14 rebounds</b>	<b>11, Bianca Boggs at James Madison, 1/25/19</b>
<b>Player with 15-19 rebounds</b>	<b>15, Victoria Reynolds vs. East Carolina, 11/27/18</b>
Player with 20 or more rebounds	21, Emily Correal vs. George Mason, 3/16/13
<b>Two players with 10 or more rebounds</b>	<b>15, Victoria Reynolds, 12, Nyla Pollard, &amp; 11 Bianca Boggs vs. ECU, 11/27/18</b>
A player with a triple-double	Abby Rendle (25 pts, 17 reb, 10 blks) at East Carolina, 11/21/17
<b>A player with a double-double</b>	<b>Bianca Boggs (22 pts, 10 reb) at Hofstra, 1/4/19</b>
<b>Two players with double-doubles</b>	<b>Victoria Reynolds (15 pts, 15 reb) &amp; Nyla Pollard (10 pts, 12 reb.) vs. ECU, 11/27/18</b>
100% from the field (min. 5 made)	7-for-7, Abby Rendle vs. Drexel, 3/1/17
<b>100% from foul line (min. 5 made)</b>	<b>6-for-6, Misha Jones at Towson, 1/27/19</b>
<b>5-7 Assists</b>	<b>5, Eva Hodgson at Towson, 1/27/19</b>
8-9 Assists	8, Bianca Boggs at Delaware, 2/9/18
10+ Assists	11, Jenna Green vs. College of Charleston, 1/26/18
<b>5 or more steals</b>	<b>6, Bianca Boggs at Hartford, 11/30/18</b>
5-9 blocks	6, Abby Rendle at Delaware, 2/9/18
10+ blocks	11, Abby Rendle vs. College of Charleston, 1/26/18

BOLD - Happened in the 2018-19 season

**LIBBY UNDERWOOD**

So. • Guard • 5-9  
Rye, New Hampshire

**SYDNEY WAGNER**

So. • Guard • 5-6  
Phoenixville, Pa.

**BIANCA BOGGS**

Sr. • Guard • 5-5  
Waldorf, Md.

**ASHLEY TAYLOR**

Jr. • Guard • 6-0  
Charlottesville, Va.

**MISHA JONES**

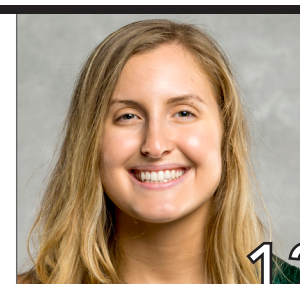
Sr. • Guard/Forward • 5-9  
Manassas Park, Va.

**EVA HODGSON**

Fr. • Guard • 5-9  
Rindge, New Hampshire

**NYLA POLLARD**

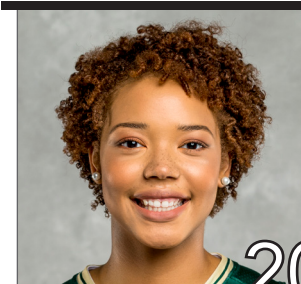
So. • Guard • 5-9  
Virginia Beach, Va.

**HARPER BIRDSONG**

R-So. • Guard • 5-10  
Suffolk, Va.

**EMMA KRUSE**

Jr. • Center • 6-3  
Port Tobacco, Md.

**CHANDLER SMITH**

Sr. • Center • 6-3  
Port Tobacco, Md.

**BAILEY EICHNER**

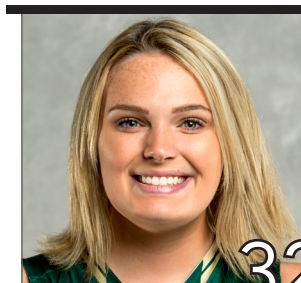
So. • Guard/Forward • 6-1  
Cudahy, Wisc.

**GABBY ROGERS**

Fr. • Center • 6-1  
Dallas, Texas

**VICTORIA REYNOLDS**

Jr. • Forward • 5-10  
Fairfax, Va.

**CAROLINE STOVER**

Fr. • Center • 6-3  
Plympton Mass.

**ED SWANSON**

Sixth Season at W&M  
29th Overall

**PRONUNCIATION GUIDE**

Bailey **EICHNER** IKE-ner

Lynne **KOKOSKI**  
Kah-kaw-ski

**CHANEL** Murchison Shh-nell





ED

SWANSON

## HEAD COACH

29<sup>TH</sup> SEASON OVERALL

6<sup>TH</sup> SEASON AT W&M

## PROFILE

Wife: Marion

Children: Connor and Matthew

### Education

Sacred Heart, 1989

### Coaching Career

Sacred Heart (1989-13)

William &amp; Mary (2013-P)

## CAREER HIGHLIGHTS

- Three NCAA Tournament Appearances
- Led W&M to 1st Division I Postseason berth in the WBI.
- Led W&M to a school record 20 wins in 2016-17
- 2016-17 VaSID Coach of the Year
- Six Postseason Appearances
- Four regular season conference championships and three postseason league titles
- 2009 New England Hall of Fame Inductee
- Eight 20-win seasons
- Five-time Conference Coach of the Year
- On five occasions, his teams have earned to the WBCA Academic Top 25 Team Honor

Ed Swanson enters his sixth season with the Green and Gold. He became the fifth Division I head women's basketball coach in William and Mary history on May 7, 2013. Prior to coming to Williamsburg, he spent 23 years transforming Sacred Heart University from a Division II program into a one of the top teams in the Northeast Conference. Swanson owns a career record of 464-327 (.587).

The success continued for the Tribe during the 2017-18 season. W&M won 16 games, which is tied for the fourth most in school history, and posted its second straight winning season for the first time since 2005-06 and 2006-07. His first recruiting class became the winningest class in school history with the team's victory over College of Charleston on Jan. 26. The seniors went onto win 66 games during their four year career. The Tribe raced out to an 11-2 start for the third straight season, which equaled the best 13-game start in school history, and led the CAA in blocked shots (218) and blocked shots per game (7.3), which ranked fourth and third in the NCAA, respectively. Both numbers are single-season school records. Individually, he mentored three players to five All-CAA awards, including All-CAA First-Team selection Bianca Boggs, who became the first Tribe player in a decade to be named to the league's first-team. Additionally, Boggs was named to the league's all-defensive team, while Abby Rendle claimed a spot on the All-CAA Third-Team, and All-Defensive Team, and freshman Nyla Pollard was picked to the CAA All-Rookie team.

Swanson led the Tribe to one of its best seasons in program history in 2016-17. The Tribe tied a school record with 20 wins, while winning a CAA Tournament game for the first time since 2009, and advancing to the CAA Semifinals for the first-time since 2001. Under his leadership, the Tribe won 11-straight games, which is the longest single-23056season streak in school history, from Nov. 18, 2016-Jan. 2, 2017. W&M had four players claim seven all-conference awards this season, including seniors Alexandra Masaquel and Marlena Tremba, who each earned second-team citations. Additionally, Masaquel was tabbed the Richmond Times-Dispatch All-State Second-Team, while Tremba earned VaSID All-State Second-Team honors. For his efforts, VaSID honored him as the Virginia State Coach of the Year.

Once again Swanson's third season was one for the record books. The Tribe raced out to its best start in school history with an 11-2 record. W&M went onto again to win the fourth most wins in school history with 15. For the second straight season the Tribe broke the blocks and assist record, by tying the single season assist record (466) and broke the school record for blocks with 148. During the season junior Marlena Tremba became the 15th player in school history to break the 1000-point barrier. Individually, four players earned All-CAA awards as junior Alexandra Masaquel was tabbed to the second-team and all-defensive team, Tremba earned third-team honors, and freshman Bianca Boggs picked up a spot on the all-rookie team. The Tribe was also rewarded for its hard work in the classroom as Masaquel, Tremba, and sophomore Jenna Green earned all-academic team honors.

Swanson's second year with the Green and Gold was one for the record books. The Tribe racked up 15 wins, the fourth-most in school history, on its way to its first-ever postseason appearances with bid in the Women's Basketball Invitational. The Green and Gold had a seven-win turnaround, while setting three school records for assists (466), blocked shots, (143), blocked shots per game (4.5). Individually he helped lead four players to five All-CAA awards. Sophomore Marlena Tremba was named to the All-CAA Third-Team, senior Jazmen Boone was named to the All-Defensive Team, freshman Abby Rendle to the All-Rookie and All-Defensive team, and senior Kyla Kerstetter earned all-academic honors.

In his first season with the Tribe, Swanson led a young team to eight victories in a seven-seed in the CAA Tournament. The Green and Gold finished in the top 10 nationally in steals per game, while Jazmen Boone also ranked in the top 20 in the NCAA in the same category. Under his guidance Kaitlyn Mathieu garnered Third-Team All-Colonial Athletic Association honors, and went on to sign a professional contract with a team in Germany. In addition, guard Marlena Tremba went onto win CAA Rookie of the Year, and was named to the all-rookie squad. Boone was named to the all-defensive team, while she and Kyla Kerstetter took home all-academic honors.

Swanson oversaw Sacred Heart's transition from Division II to Division I in 1999-00, and the program took off under his direction. Over Sacred Heart's 14 years in Division I, Swanson led SHU



to a 280-145 record (.664), including a 190-62 (.754) record in the NEC. He departed as the NEC's all-time winningest head coach with all of his SHU teams finishing third or higher in the league standings. Swanson-lead teams have posted 13 straight winning seasons and 12 straight campaigns with 18 or more victories, including six with 20 or more wins. In 2009, he was inducted into the New England Basketball Hall of Fame.

In total, Swanson-coached players earned 19 All-NEC honors, including nine first-team awards, nine NEC All-Tournament Team honors, eight NEC All-Rookie Team selections, four NEC Rookies of the Year, three NEC Tournament MVPs and three NEC Players of the Year.

His teams have also enjoyed success in the classroom. On five occasions, the Pioneers were selected to the Women's Basketball Coaches Association (WBCA) Academic Top 25 Team Honor Roll, which has recognized outstanding academic performances from the top teams in each of the five collegiate divisions since 1995-96. On eight occasions since 2003, one of his players was a CoSIDA Academic All-District selection and two Pioneer players were named NEC Scholar-Athlete of the Year.

In 2012-13, Swanson led Sacred Heart to its third straight postseason appearance, and in the process, recorded his 400th career victory. His milestone win came on Feb. 12, 2013 as the Pioneers defeated Fairleigh Dickinson. SHU completed the season at 22-11, finishing second in the NEC with a 13-5 ledger and garnering a berth in the program's first Women's National Invitational Tournament (WNIT).

Sacred Heart claimed its third NEC Championship and advanced to the NCAA Tournament in 2011-12. The Pioneers also ranked 23rd nationally in the WBCA Academic Top 25 Team Honor Roll with a team GPA of 3.35. SHU compiled a season mark to 25-8, winning both the regular season and postseason crowns in the league as Swanson was named NEC Coach of the Year for the fourth time.

The Pioneers earned a berth in the 2011 Women's Basketball Invitational and finished the year at 18-13 with a 12-6 mark in the NEC. After a 0-5 start to the 2008-09 season, Swanson's Pioneers reeled off a 21-game winning streak, the longest in school history and second longest in the country, before finishing with 25-8 record. SHU completed the NEC regular season with a perfect 18-0 mark, becoming just the third team in the history of the conference to accomplish the feat. Swanson earned NEC Coach of the Year honors as Sacred Heart finished off an amazing season by capturing its second league title and trip to the NCAA Tournament over a four-year span. During the 2008-09 season, Swanson moved past former Mount St. Mary's head coach Bill Sheahan (124) as all-time leader in Northeast Conference wins and eclipsing the 300-win plateau in his career.

The 2005-06 season saw Swanson lead the Sacred Heart program to its first NCAA Tournament, capturing the NEC Championship in just its seventh season at the Division I level. Swanson guided the Pioneers to a school record 26-5 record, including a 16-2 NEC ledger. He also garnered career victory No. 250 during the season.

Under his leadership, Sacred Heart was one of the toughest teams on its home court, the William H. Pitt Center, which opened in 1997. During the Pitt Center's opening 16 seasons, Swanson's teams won 81.9 percent (185-41) of its home games. In 2011-12, SHU went 15-1 at home, a season bested only by a perfect 15-0 in 2005-06 and 14-0 in 2003-04. During the stretch, the Pioneers' home winning percentage at the Pitt Center ranked among the best nationally.

After directing the Pioneers to a 20-7 record — the program's first 20-win season — in 1995-96, Swanson was voted Coach of the Year in the New England Collegiate Conference (NECC) and the Women's Basketball Coaches Association's (WBCA) District I.

Swanson took the reins of the Sacred Heart University women's basketball program in 1990 and built the Pioneers into one of the top teams in the Northeast. He joined Dave Bike's men's basketball coaching staff at SHU in 1989, and, after becoming head coach of the Pioneer women's program in 1990, did double duty for three seasons before becoming the University's first full-time women's coach in 1993. Prior to Swanson's arrival,

## CAREER RECORD

YEAR	OVERALL RECORD	CONF. RECORD	CONF. FINISH	POST SEASON
1990-91	8-19	3-11	7th	
1991-92	11-16	5-9	T5th	
1992-93	16-13	7-7	4th	
1993-94	12-15	8-8	5th	
1994-95	11-16	7-9	5th	
1995-96	20-7	16-4	T2nd	
1996-97	14-14	10-8	5th	
1997-98	19-7	13-3	2nd	
1998-99	15-12	12-6	3rd	
1999-00	14-14	11-7	T3rd	
2000-01	15-14	11-7	T3rd	
2001-02	18-11	13-5	T2nd	
2002-03	18-10	12-6	T3rd	
2003-04	21-8	14-4	2nd	
2004-05	18-11	14-4	2nd	
2005-06	26-5	16-2	1st	NCAA
2006-07	22-10	15-3	T1st	
2007-08	19-11	14-4	3rd	
2008-09	25-8	18-0	1st	NCAA
2009-10	19-11	14-4	3rd	
2010-11	18-13	12-6	T3rd	WBI
2011-12	25-8	15-3	1st	NCAA
2012-13	22-11	13-5	2nd	WNIT
2013-14	8-21	5-11	8th	
2014-15	15-16	9-9	6th	WBI
2015-16	15-15	6-12	7th	
2016-17	20-11	9-9	4th	
2017-18	16-14	7-11	6th	
2018-19	11-7	4-3		
Career	491-348 (.585)	296-182 (.619)		
Division I	365-229 (.614)	231-117 (.664)		
W&M/CAA	85-84 (.503)	40-55 (.421)		

the Sacred Heart women's team compiled a 4-21 record. Under his guidance, the climb to Division II respectability was accomplished within three seasons, from 8-19 to 11-16 and, in 1992-93, to 16-13 — the program's first winning record in 11 seasons.

In his time at SHU, he was a four-time NEC Coach of the Year, led Sacred Heart to five postseason bids, including three NCAA Tournament appearances. Swanson guided the Pioneers to four NEC regular season crowns and three NEC tournament championships. SHU posted 20-win seasons seven times during his tenure, including five of the last eight years.

He earned a bachelor's degree in business from Sacred Heart in 1989. Also during his tenure at SHU, Swanson served as the moderator for the Pioneer Student-Athlete Council from 1998-01 and was the annual coordinator of commencement exercises since 2000. Swanson and his wife, Marion, have two sons, Connor and Matthew.



# #0 LIBBY UNDERWOOD

## SOPHOMORE - GUARD

### RYE, N.H. - PORTSMOUTH

#### >> UNDERWOOD'S CAREER HIGHS

##### MINUTES

Season 13 vs. VCU, 11/6/18  
Career 15 vs. USC Upstate, 12/5/17

##### POINTS

Season 6 vs. VCU, 11/6/18  
Career 8 vs. USC Upstate, 12/5/17

##### REBOUNDS

Season 2 at James Madison, 1/25/19  
Career 3 at Northeastern, 1/21/18

##### FIELD GOALS

Season 3 vs. VCU, 11/6/18  
Career 3 vs. VCU, 11/6/18

##### 3-POINT FIELD GOALS

Season -  
Career 1 (3x) last time vs. Upstate 12/5/17

##### FREE THROWS

Season 1 (2x) last time at NU, 1/6/18  
Career 5 vs. USC Upstate, 12/5/17

##### ASSISTS

Season 1 (2x) last time at JMU, 1/25/19  
Career 3 vs. USC Upstate, 12/5/17

##### STEALS

Season 1 at Old Dominion, 12/8/18  
Career 1 (3x) last time at ODU, 12/8/18

##### BLOCKS

Season 1 vs. VCU, 11/6/18  
Career 1 vs. VCU, 11/6/18

##### MISCELLANEOUS

Career in Double Figures 0  
2018-19 in Double Figures 0

#### >> 2018-19 GAME-BY-GAME

Opp	Date	GS	Min	FG-A	3FG-A	FT-A	Reb.	A	TO	BLK	STL	PTS
VCU	11/6	14	3-4	0-1	0-0	0	1	1	0	1	6	
HOW	11/12	2	0-1	0-0	0-0	1	0	0	0	0	0	
at Loy.	11/17	11	0-1	0-0	0-0	0	0	0	0	0	0	
at DC	11/24	6	0-1	0-1	0-0	0	0	0	0	0	0	
ECU	11/27											
DNP - COACH'S DECISION												
at Hart	11/30	2	0-0	0-0	0-0	0	0	0	0	0	0	
at Fair	12/2											
DNP - COACH'S DECISION												
UOFR	12/5	1	1-1	0-0	0-0	0	0	0	0	0	0	2
at ODU	12/8	10	0-1	0-0	1-2	0	0	2	0	1	1	
at NSU	12/21	5	0-0	0-0	0-0	0	0	2	0	0	0	
GW	12/28	3	0-0	0-0	0-0	0	0	0	0	0	0	
at Hof	1/4											
DNP - COACH'S DECISION												
at NU	1/6	8	0-1	0-1	1-2	0	0	1	0	0	1	
UNCW	1/11											
DNP - COACH'S DECISION												
COFC	1/13											
DNP - COACH'S DECISION												
ELON	1/20											
DNP - COACH'S DECISION												
at JMU	1/25	2	0-2	0-0	0-0	2	1	0	0	0	0	
at Tow.	1/27											
DNP - COACH'S DECISION												

#### >> UNDERWOOD'S CAREER STATISTICS

Season	GP	GS	Min/Avg	FG-FGA	Pct	3pt-Att	Pct	FT-FTA	Pct	Off	Def	Reb	Avg	PF	FO	A	TO	Blk	S	TP	Avg
2017-18	27	0	162/6.0	6-30	.200	3-15	.200	14-22	.636	2	14	16	0.6	10	0	8	21	0	2	29	1.1
2018-19	11	0	62/5.6	4-12	.333	0-3	.000	2-4	.500	3	0	3	0.3	1	0	2	6	1	1	10	0.9
<b>CAREER</b>	<b>38</b>	<b>0</b>	<b>224/5.9</b>	<b>10-42</b>	<b>.238</b>	<b>3-18</b>	<b>.167</b>	<b>16-26</b>	<b>.615</b>	<b>5</b>	<b>14</b>	<b>19</b>	<b>0.5</b>	<b>11</b>	<b>0</b>	<b>10</b>	<b>27</b>	<b>1</b>	<b>3</b>	<b>39</b>	<b>1.0</b>



# #2 BIANCA BOGGS

## SENIOR - GUARD

### WALDORF, MD. - ST. MARY'S RYKEN

#### >> BOGGS' CAREER HIGHS

##### MINUTES

Season 39 (2x) last time vs. CofC, 1/13/19  
Career 41 at East Carolina, 11/21/17

##### POINTS

Season 26 (2x) last time vs. GW, 12/28/18  
Career 33 at St. Francis (Pa.), 12/2/17

##### REBOUNDS

Season 11 (2x) last time at JMU, 1/25/19  
Career 11 (3x) last time at JMU, 1/25/19

##### FIELD GOALS

Season 10 (2x) last time vs. GW, 12/28/18  
Career 12 at St. Francis (Pa.), 12/2/17

##### 3-POINT FIELD GOALS

Season 4 (2x) last time vs. CofC, 1/13/19  
Career 4 (4x) last time vs. CofC, 1/13/19

##### FREE THROWS

Season 7 (2x) last time vs. UNCW, 1/11/19  
Career 8 (2x) last time vs. UD, 2/23/18

##### ASSISTS

Season 7 (2x) last time at DC, 11/24/18  
Career 8 at Delaware, 2/9/18

##### STEALS

Season 6 at Hartford, 11/30/18  
Career 7 vs. Charleston, 1/26/18

##### BLOCKS

Season 3 vs. GW, 12/28/18  
Career 4 vs. Hofstra, 1/28/18

##### MISCELLANEOUS

Career in Double Figures 57  
2018-19 in Double Figures 15

#### >> 2018-19 GAME-BY-GAME

Opp	Date	GS	Min	FG-A	3FG-A	FT-A	Reb.	A	TO	BLK	STL	PTS
VCU	11/6	*	34	6-16	1-3	2-3	6	4	3	1	5	16
HOW	11/12	*	35	10-22	1-5	5-5	9	7	4	0	1	26
at Loy	11/17	*	35	5-9	2-4	2-2	5	3	1	0	0	14
at DC	11/24	*	36	6-12	1-3	5-5	10	7	9	2	3	18
ECU	11/27	*	37	4-11	0-3	1-2	11	5	6	1	1	9
at Hart	11/30	*	39	3-15	1-5	5-6	6	2	4	0	6	12
at Fair	12/2	*	37	8-12	2-4	4-8	5	2	7	0	3	22
UOFR	12/5	*	32	2-7	0-0	1-2	1	6	3	2	2	8
at ODU	12/8	*	24	7-15	0-3	3-3	3	2	2	0	3	17
at NSU	12/21	*	33	4-10	0-2	2-5	8	4	6	1	4	10
GW	12/28	*	34	10-16	3-5	3-3	10	3	3	3	2	26
at Hof	1/4	*	39	7-14	1-4	7-7	10	3	6	1	0	22
at NU	1/6	*	25	6-15	4-7	5-6	6	4	2	0	3	21
UNCW	1/11	*	36	8-16	2-5	7-9	6	2	2	2	2	25
COFC	1/13	*	39	6-16	4-8	2-8	8	4	5	0	2	18
ELON	1/20	*	27	4-8	1-2	4-6	3	3	1	0	0	13
at JMU	1/25	*	33	2-18	0-3	4-4	11	3	3	9	1	8
at Tow	1/27	*	33	7-17	3-6	5-11	7	3	4	0	3	22

#### >> BOGGS' CAREER STATISTICS

Season	GP	GS	Min/Avg	FG-FGA	Pct	3pt-Att	Pct	FT-FTA	Pct	Off	Def	Reb	Avg	PF	FO	A	TO	Blk	S	TP	Avg
2015-16	30	24	802/26.7	68-233	.292	17-56	.304	70-102	.686	38	57	95	3.2	81	5	45	55	10	56	223	7.4
2016-17	31	26	734/23.7	82-214	.383	22-74	.297	60-76	.789	44	65	109	3.5	60	0	60	76	17	54	246	7.9
2017-18	30	30	907/30.2	156-373	.418	41-129	.318	103-139	.741	46	91	137	4.6	85	1	88	111	24	65	456	15.2
2018-19	18	18	610/33.9	105-252	.417	27-77	.351	69-97	.711	26	99	125	6.9	44	2	67	71	13	41	306	17.0
<b>CAREER</b>	<b>109</b>	<b>98</b>	<b>3053/28.0</b>	<b>411-1072</b>	<b>.383</b>	<b>107-336</b>	<b>.318</b>	<b>302-414</b>	<b>.729</b>	<b>154</b>	<b>312</b>	<b>466</b>	<b>4.3</b>	<b>270</b>	<b>8</b>	<b>260</b>	<b>313</b>	<b>64</b>	<b>216</b>	<b>1231</b>	<b>11.3</b>





# #3 ASHLEY TAYLOR

## JUNIOR - GUARD

### CHARLOTTESVILLE, VA. - ST. ANNE'S-BELFIELD

#### >> TAYLOR'S CAREER HIGHS

<b>MINUTES</b>			<b>FREE THROWS</b>		
Season	6	vs. GW, 12/28/18	Season	1	vs. GW, 12/28/18
Career	9	vs. USC Upstate, 12/5/17	Career	1	vs. GW, 12/28/18
<b>POINTS</b>			<b>ASSISTS</b>		
Season	1	vs. GW, 12/28/18	Season	-	-
Career	3	vs. USC Upstate, 12/5/17	Career	1	(4x) last time at CofC, 12/29/17
<b>REBOUNDS</b>			<b>STEALS</b>		
Season	-	-	Season	-	-
Career	2	vs. Loyola, 11/25/17	Career	1	vs. Davidson, 11/27/17
<b>FIELD GOALS</b>			<b>BLOCKS</b>		
Season	-	-	Season	-	-
Career	1	(2x) last time at Elon, 3/1/18	Career	-	-
<b>3-POINT FIELD GOALS</b>			<b>MISCELLANEOUS</b>		
Season	-	-	Career in Double Figures	0	
Career	1	vs. USC Upstate, 12/5/17	2018-19 in Double Figures	0	

#### >> TAYLOR'S CAREER STATISTICS

Season	GP	GS	Min/Avg	FG-FGA	Pct	3pt-Att	Pct	FT-FTA	Pct	Off	Def	Reb	Avg	PF	FO	A	TO	Blk	S	TP	Avg
2016-17	7	0	22/3.1	0-6	.000	0-4	.000	0-0	.000	1	2	3	0.4	0	0	2	1	0	0	0	0.0
2017-18	13	0	32/2.5	2-9	.222	1-3	.333	0-0	.000	0	7	7	0.5	1	0	2	4	0	1	5	0.4
2018-19	4	0	11/2.8	0-4	.000	0-3	.000	1-2	.500	0	0	0	0.0	0	0	0	0	0	0	1	0.3
<b>CAREER</b>	<b>25</b>	<b>0</b>	<b>65/2.7</b>	<b>2-20</b>	<b>.105</b>	<b>1-10</b>	<b>.100</b>	<b>1-2</b>	<b>.500</b>	<b>1</b>	<b>9</b>	<b>10</b>	<b>0.4</b>	<b>1</b>	<b>0</b>	<b>4</b>	<b>5</b>	<b>0</b>	<b>1</b>	<b>6</b>	<b>0.3</b>

#### >> 2018-19 GAME-BY-GAME

Opp	Date	GS	Min	FG-A	3FG-A	FT-A	Reb.	A	TO	BLK	STL	Pts
VCU	11/6			DNP	-	COACH'S DECISION						
HOW	11/12			DNP	-	COACH'S DECISION						
at Loy	11/17	1	0-0	0-0	0-0	0	0	0	0	0	0	0
at DC	11/24			DNP	-	COACH'S DECISION						
ECU	11/27			DNP	-	COACH'S DECISION						
at Hart	11/30			DNP	-	COACH'S DECISION						
at Fair	12/2			DNP	-	COACH'S DECISION						
UOFR	12/5			DNP	-	COACH'S DECISION						
at ODU	12/8	1	0-1	0-1	0-0	0	0	0	0	0	0	0
at NSU	12/21			DNP	-	COACH'S DECISION						
GW	12/28	6	0-3	0-2	1-2	0	0	0	0	0	1	
at Hof	1/4			DNP	-	COACH'S DECISION						
at NU	1/6			DNP	-	COACH'S DECISION						
UNCW	1/11			DNP	-	COACH'S DECISION						
COFC	1/13			DNP	-	COACH'S DECISION						
ELON	1/20			DNP	-	COACH'S DECISION						
at JMU	1/25	3	0-0	0-0	0-0	0	0	0	0	0	0	0
at Tow	1/27			DNP	-	COACH'S DECISION						



# #5 MISHA JONES

## SENIOR - GUARD/FORWARD

### MANASSAS PARK, VA. - BATTLEFIELD

#### >> JONES' CAREER HIGHS

<b>MINUTES</b>			<b>FREE THROWS</b>		
Season	25	at Towson, 1/27/19	Season	6	at Towson, 1/27/19
Career	27	vs. Delaware, 2/23/18	Career	6	at Towson, 1/27/19
<b>POINTS</b>			<b>ASSISTS</b>		
Season	9	(2x) last vs. UNCW, 1/11/19	Season	4	at Old Dominion, 12/8/18
Career	9	(2x) last vs. UNCW, 1/11/19	Career	4	(3x) last time at ODU, 12/8/18
<b>REBOUNDS</b>			<b>STEALS</b>		
Season	8	at Towson, 1/27/19	Season	2	at Hofstra, 1/4/19
Career	8	at Towson, 1/27/19	Career	2	(2x) last time at Hofstra, 1/4/19
<b>FIELD GOALS</b>			<b>BLOCKS</b>		
Season	3	(2x) last vs. UNCW, 1/11/19	Season	1	(3x) last time vs. Elon, 1/20/19
Career	3	(2x) last vs. UNCW, 1/11/19	Career	1	(4x) last time vs. Elon, 1/20/19
<b>3-POINT FIELD GOALS</b>			<b>MISCELLANEOUS</b>		
Season	3	vs. UNCW, 1/11/19	Career in Double Figures	0	
Career	3	vs. UNCW, 1/11/19	2018-19 in Double Figures	0	

#### >> 2018-19 GAME-BY-GAME

Opp	Date	GS	Min	FG-A	3FG-A	FT-A	Reb.	A	TO	BLK	STL	Pts
VCU	11/6	4	1-1	1-1	1-2	4	0	0	0	0	4	
HOW	11/12	14	3-5	2-4	1-1	3	2	2	1	0	9	
at Loy	11/17	13	2-4	0-2	1-2	2	1	0	0	0	5	
at DC	11/24	11	1-2	1-2	0-0	1	3	1	1	0	3	
ECU	11/27	9	0-3	0-3	0-0	2	0	0	0	0	0	
at Hart	11/30	12	1-2	1-1	0-0	4	1	0	0	0	3	
at Fair	12/2	8	0-1	0-1	0-0	1	0	0	0	0	0	
UOFR	12/5	6	0-0	0-0	0-0	1	0	1	0	0	0	
at ODU	12/8	13	2-5	0-1	0-0	4	4	1	0	0	4	
at NSU	12/21	8	0-1	0-1	0-0	0	0	1	0	1	0	
GW	12/28	*	12	1-2	0-0	2-2	1	0	1	0	4	
at Hof	1/4	*	6	1-1	1-1	0-0	1	1	0	0	3	
at NU	1/6	*	20	2-6	1-3	1-2	3	2	0	0	1	6
UNCW	1/11	24	3-5	3-5	0-0	2	3	3	1	0	9	
COFC	1/13	19	2-5	2-4	0-0	2	2	1	0	0	6	
ELON	1/20	15	2-3	2-2	2-2	2	2	0	2	0	8	
at JMU	1/25	22	2-3	2-3	0-0	3	0	0	0	0	6	
at Tow	1/27	22	1-5	0-4	6-6	8	2	2	0	0	8	

#### >> JONES' CAREER STATISTICS

Season	GP	GS	Min/Avg	FG-FGA	Pct	3pt-Att	Pct	FT-FTA	Pct	Off	Def	Reb	Avg	PF	FO	A	TO	Blk	S	TP	Avg
2015-16	27	0	180/6.7	12-36	.333	5-20	.250	7-10	.700	1	16	17	0.6	15	0	8	9	0	4	36	1.3
2016-17																					
2017-18	28	0	201/7.2	13-41	.317	7-26	.269	10-11	.909	6	26	32	1.1	29	0	15	17	1	7	43	1.5
2018-19	18	3	242/13.4	24-54	.444	16-38	.421	14-16	.875	13	27	40	2.2	35	0	23	13	3	3	78	4.3
<b>CAREER</b>	<b>73</b>	<b>3</b>	<b>623/8.5</b>	<b>49-131</b>	<b>.374</b>	<b>28-84</b>	<b>.333</b>	<b>31-37</b>	<b>.838</b>	<b>20</b>	<b>69</b>	<b>89</b>	<b>1.2</b>	<b>79</b>	<b>0</b>	<b>46</b>	<b>39</b>	<b>4</b>	<b>14</b>	<b>157</b>	<b>2.2</b>



# #10 EVA HODGSON

**FRESHMAN - GUARD**
**RINDGE, N.H. - NEW HAMPTON SCHOOL**
**>> HODGSON'S CAREER HIGHS**
**MINUTES**

 Season 39 (2x) last time at TU, 1/27/19  
 Career 39 (2x) last time at TU, 1/27/19

**POINTS**

 Season 18 at Hofstra, 1/4/19  
 Career 18 at Hofstra, 1/4/19

**REBOUNDS**

 Season 6 at Towson, 1/27/19  
 Career 6 at Towson, 1/27/19

**FIELD GOALS**

 Season 6 at Hofstra, 1/4/19  
 Career 6 at Hofstra, 1/4/19

**3-POINT FIELD GOALS**

 Season 3 vs. Northeastern, 1/6/19  
 Career 3 vs. Northeastern, 1/6/19

**FREE THROWS**

 Season 8 at James Madison, 1/25/19  
 Career 8 at James Madison, 1/25/19

**ASSISTS**

 Season 6 (3x) last time vs. Elon, 1/20/19  
 Career 6 (3x) last time vs. Elon, 1/20/19

**STEALS**

 Season 4 at Fairfield, 12/2/18  
 Career 4 at Fairfield, 12/2/18

**BLOCKS**

 Season 2 vs. UNCW, 1/11/19  
 Career 2 vs. UNCW, 1/11/19

**MISCELLANEOUS**

 Career in Double Figures 8  
 2018-19 in Double Figures 8

**> 2018-19 GAME-BY-GAME**

Opp	Date	GS	Min	FG-A	3FG-A	FT-A	Reb.	A	TO	BLK	STL	Pts
VCU	11/6	*	28	4-8	0-2	0-0	0	3	2	0	2	8
HOW	11/12	*	35	2-6	1-3	1-2	5	4	4	0	2	6
at Loy	11/17	*	30	2-7	0-1	1-1	2	5	2	1	1	5
at DC	11/24	*	30	0-4	0-1	0-0	3	2	4	0	0	0
ECU	11/27	*	26	4-4	2-2	3-4	1	0	2	1	0	13
at Hart	11/30	*	34	4-12	1-5	5-7	2	2	4	0	3	14
at Fair	12/2	*	32	0-4	0-2	3-4	5	4	4	0	4	3
UOFR	12/5	*	32	5-11	1-4	4-4	4	6	3	1	2	15
at ODU	12/8	*	22	2-5	0-2	0-2	1	3	1	0	0	4
at NSU	12/21	*	14	2-3	1-1	0-0	1	2	2	0	0	5
GW	12/28	*	32	4-7	2-3	1-1	4	6	2	1	0	11
at Hof	1/4	*	39	6-14	1-3	5-6	1	2	3	1	2	18
at NU	1/6	*	34	4-4	3-3	5-6	4	2	2	0	2	16
UNCW	1/11	*	27	2-6	2-5	0-0	0	1	2	1	2	6
COFC	1/13	*	17	1-4	0-1	0-0	1	1	5	1	0	2
ELON	1/20	*	37	2-7	0-2	0-0	4	6	2	0	2	4
at JMU	1/25	*	27	2-6	1-4	8-8	4	1	4	0	1	13
at Tow	1/27	*	39	4-10	0-1	5-6	6	5	1	1	0	13

**>> HODGSON'S CAREER STATISTICS**

Season	GP	GS	Min/Avg	FG-FGA	Pct	3pt-Att	Pct	FT-FTA	Pct	Off	Def	Reb	Avg	PF	FO	A	TO	Blk	S	TP	Avg
2018-19	18	18	533/29.6	50-122	.410	15-45	.333	41-52	.788	15	33	48	2.7	50	1	55	48	7	24	156	8.7
<b>CAREER</b>	<b>18</b>	<b>18</b>	<b>533/29.6</b>	<b>50-122</b>	<b>.410</b>	<b>15-45</b>	<b>.333</b>	<b>41-52</b>	<b>.788</b>	<b>15</b>	<b>33</b>	<b>48</b>	<b>2.7</b>	<b>50</b>	<b>1</b>	<b>55</b>	<b>48</b>	<b>7</b>	<b>24</b>	<b>156</b>	<b>8.7</b>



# #11 NYLA POLLARD

**SOPHOMORE - GUARD**
**VIRGINIA BEACH, VA. - PRINCESS ANNE**
**>> POLLARD'S CAREER HIGHS**
**MINUTES**

 Season 38 at Hofstra, 1/4/19  
 Career 38 at Hofstra, 1/4/19

**POINTS**

 Season 10 vs. East Carolina, 11/27/18  
 Career 14 vs. USC Upstate, 12/5/17

**REBOUNDS**

 Season 12 vs. East Carolina, 11/27/18  
 Career 12 vs. East Carolina, 11/27/18

**FIELD GOALS**

 Season 4 (2x) last time vs. CofC, 1/19/13  
 Career 6 vs. USC Upstate, 12/5/17

**3-POINT FIELD GOALS**

 Season 2 (2x) last vs. UNCW, 1/11/19  
 Career 2 (6x) last vs. UNCW, 1/11/19

**FREE THROWS**

 Season 6 vs. East Carolina, 11/27/18  
 Career 6 vs. East Carolina, 11/27/18

**ASSISTS**

 Season 6 vs. UNCW, 1/11/19  
 Career 6 vs. UNCW, 1/11/19

**STEALS**

 Season 3 vs. Richmond, 12/5/18  
 Career 4 vs. Davidson, 11/27/17

**BLOCKS**

 Season 1 (3x) last time vs. Elon, 1/20/19  
 Career 1 (7x) last time vs. Elon, 1/20/19

**MISCELLANEOUS**

 Career in Double Figures 4  
 2018-19 in Double Figures 1

**>> 2018-19 GAME-BY-GAME**

Opp	Date	GS	Min	FG-A	3FG-A	FT-A	Reb.	A	TO	BLK	STL	Pts
VCU	11/6		19	2-4	1-1	0-1	1	0	0	0	1	5
HOW	11/12		34	3-7	2-3	0-0	3	2	2	0	2	8
at Loy	11/17		23	4-6	1-2	0-0	2	4	1	0	1	9
at DC	11/24		25	1-4	0-2	0-1	1	1	2	0	0	2
ECU	11/27	*	35	2-9	0-3	6-8	12	2	4	1	0	10
at Hart	11/30	*	25	0-6	0-3	0-0	3	2	2	0	0	0
at Fair	12/2	*	27	0-3	0-0	2-4	3	3	3	0	2	2
UOFR	12/5	*	35	2-5	1-4	0-0	2	2	3	0	3	5
at ODU	12/8	*	20	0-2	0-1	2-2	0	4	2	0	2	2
at NSU	12/21	*	37	2-6	0-2	2-2	2	4	0	0	1	6
GW	12/28	*	33	1-7	0-2	0-0	1	3	2	0	1	2
at Hof	1/4	*	38	1-4	1-1	1-2	7	3	1	0	2	4
at NU	1/6	*	13	0-2	0-1	0-0	0	0	0	0	0	0
UNCW	1/11	*	36	2-4	2-3	3-4	7	6	3	0	0	9
COFC	1/13	*	37	4-9	0-3	1-2	2	4	0	1	1	9
ELON	1/20	*	33	1-6	0-3	0-0	1	2	3	1	0	2
at JMU	1/25	*	25	0-3	0-1	2-2	1	1	2	0	0	2
at Tow	1/27	*	34	2-3	1-1	3-4	2	4	2	0	1	8

**>> POLLARD'S CAREER STATISTICS**

Season	GP	GS	Min/Avg	FG-FGA	Pct	3pt-Att	Pct	FT-FTA	Pct	Off	Def	Reb	Avg	PF	FO	A	TO	Blk	S	TP	Avg
2017-18	30	27	658/21.9	44-121	.364	14-48	.292	20-27	.741	22	31	53	1.8	71	3	46	40	4	15	122	4.1
2018-19	18	14	531/29.5	27-90	.300	9-36	.250	22-32	.688	18	32	50	2.8	44	2	48	32	3	17	85	4.7
<b>CAREER</b>	<b>48</b>	<b>41</b>	<b>1189/24.8</b>	<b>71-211</b>	<b>.336</b>	<b>23-84</b>	<b>.274</b>	<b>42-59</b>	<b>.712</b>	<b>40</b>	<b>63</b>	<b>103</b>	<b>2.1</b>	<b>115</b>	<b>5</b>	<b>94</b>	<b>72</b>	<b>7</b>	<b>32</b>	<b>207</b>	<b>4.3</b>



# #12 HARPER BIRDSONG

## SOPHOMORE - GUARD

### SUFFOLK, VA. - NANSEMOND SUFFOLK (George Washington)

#### >> BIRDSONG'S CAREER HIGHS

MINUTES			FREE THROWS		
Season	30	at Old Dominion, 12/8/18	Season	4	(2x) last vs. UNCW, 1/11/19
Career	30	at Old Dominion, 12/8/18	Career	4	(2x) last vs. UNCW, 1/11/19
POINTS			ASSISTS		
Season	18	at Old Dominion, 12/8/18	Season	4	at Old Dominion, 12/8/18
Career	18	at Old Dominion, 12/8/18	Career	4	at Old Dominion, 12/8/18
REBOUNDS			STEALS		
Season	5	(3x) last time vs. CofC, 1/13/19	Season	3	vs. GW, 12/28/18
Career	5	(3x) last time vs. CofC, 1/13/19	Career	3	vs. GW, 12/28/18
FIELD GOALS			BLOCKS		
Season	6	(3x) last time at NU, 1/6/19	Season	2	vs. UNCW, 1/11/19
Career	6	(3x) last time at NU, 1/6/19	Career	2	vs. UNCW, 1/11/19
3-POINT FIELD GOALS			MISCELLANEOUS		
Season	4	vs. GW, 12/28/18	Career in Double Figures		10
Career	4	vs. GW, 12/28/18	2018-19 in Double Figures		10

#### >> BIRDSONG'S CAREER STATISTICS

Season	GP	GS	Min/Avg	FG-FGA	Pct	3pt-Att	Pct	FT-FTA	Pct	Off	Def	Reb	Avg	PF	FO	A	TO	Blk	S	TP	Avg
2016-17	8	0	39/4.9	4-13	.308	2-8	.250	1-1	1.000	0	2	2	0.3	2	0	2	1	0	1	11	1.4
2017-18																					
2018-19	18	4	356/19.8	63-160	.394	35-88	.398	22-31	.710	10	21	31	1.7	39	1	19	33	5	12	183	10.2
<b>CAREER</b>	<b>26</b>	<b>4</b>	<b>395/15.2</b>	<b>67-173</b>	<b>.387</b>	<b>37-96</b>	<b>.385</b>	<b>22-32</b>	<b>.719</b>	<b>10</b>	<b>23</b>	<b>33</b>	<b>1.3</b>	<b>41</b>	<b>1</b>	<b>21</b>	<b>34</b>	<b>5</b>	<b>13</b>	<b>194</b>	<b>7.5</b>

#### >> 2018-19 GAME-BY-GAME

Opp	Date	GS	Min	FG-A	3FG-A	FT-A	Reb.	A	TO	BLK	STL	Pts
VCU	11/6	*	12	0-4	0-2	0-0	0	0	4	0	0	0
HOW	11/12	*	16	5-10	1-4	1-2	2	1	1	1	1	12
at Loy	11/17	*	14	3-3	3-3	0-2	0	0	2	0	0	9
at DC	11/24	*	20	4-10	2-6	0-0	0	2	1	0	1	10
ECU	11/27		19	3-9	1-3	3-3	1	1	3	1	1	10
at Hart	11/30		19	2-5	2-5	2-5	1	1	2	0	0	8
at Fair	12/2		25	3-8	3-5	2-2	0	0	1	0	0	11
UOFR	12/5		18	5-7	3-5	0-0	2	2	1	0	1	13
at ODU	12/8		30	6-18	2-8	4-4	2	4	3	0	1	18
at NSU	12/21		28	5-11	3-7	1-1	5	1	4	0	1	14
GW	12/28		23	6-10	4-6	0-0	2	2	1	0	3	16
at Hof	1/4		23	2-7	2-5	3-4	1	0	22	0	0	9
at NU	1/6		29	6-15	2-7	2-4	5	2	1	0	1	16
UNCW	1/11		21	0-10	0-5	4-4	2	1	0	2	1	4
COFC	1/13		23	3-11	2-5	0-0	4	0	2	0	0	8
ELON	1/20		17	5-11	3-6	0-0	3	2	3	1	0	13
at JMU	1/25		14	5-9	2-5	0-0	0	0	1	0	0	12
at Tow	1/27		3	0-1	0-1	0-0	0	0	1	0	0	0

#### >> 2018-19 GAME-BY-GAME

Opp	Date	GS	Min	FG-A	3FG-A	FT-A	Reb.	A	TO	BLK	STL	Pts
VCU	11/6		16	1-5	1-4	1-2	4	1	0	1	0	4
HOW	11/12		13	5-9	4-7	0-2	2	0	0	2	0	14
at Loy	11/17		18	2-2	1-1	0-0	5	3	1	0	2	5
at DC	11/24		16	3-5	3-4	0-0	3	0	0	0	0	9
ECU	11/27		15	2-6	2-4	0-0	4	2	0	0	0	6
at Hart	11/30		22	0-6	0-4	2-2	1	0	1	1	1	2
at Fair	12/2		11	0-3	0-2	2-2	4	0	1	0	0	2
UOFR	12/5		8	1-2	1-2	0-0	1	0	1	0	0	3
at ODU	12/8		21	1-5	0-3	0-0	5	1	0	1	1	2
at NSU	12/21		21	3-7	1-5	0-2	1	2	0	0	0	7
GW	12/28		14	1-5	1-4	0-0	2	0	0	2	0	3
at Hof	1/4		13	0-0	0-0	0-0	1	1	0	0	0	0
at NU	1/6		18	1-5	0-4	1-1	1	1	2	0	0	3
UNCW	1/11	*	12	0-4	0-4	0-0	0	0	0	0	0	0
COFC	1/13	*	7	0-1	0-0	0-0	0	0	0	1	0	0
ELON	1/20		10	3-6	3-5	0-0	0	0	0	1	0	9
at JMU	1/25		13	0-2	0-2	0-0	3	0	0	0	1	0
at Tow	1/27		22	5-8	3-5	0-0	4	0	1	0	1	13



# #15 EMMA KRAUSE

## FRESHMAN - FORWARD

### PLANTATION, FLA. - CARDINAL GIBBONS

#### >> KRAUSE'S CAREER HIGHS

MINUTES			FREE THROWS		
Season	22	(2x) last time at TU, 1/27/19	Season	2	at Fairfield, 12/2/18
Career	22	(2x) last time at TU, 1/27/19	Career	2	at Fairfield, 12/2/18
POINTS			ASSISTS		
Season	14	vs. Howard, 11/12/18	Season	3	at Loyola, 11/14/18
Career	14	vs. Howard, 11/12/18	Career	3	at Loyola, 11/14/18
REBOUNDS			STEALS		
Season	5	(2x) last time at ODU, 12/8/18	Season	2	at Loyola, 11/14/18
Career	5	(2x) last time at ODU, 12/8/18	Career	2	at Loyola, 11/14/18
FIELD GOALS			BLOCKS		
Season	5	(2x) last time at TU, 1/27/19	Season	2	(2x) last time vs. GW, 12/28/18
Career	5	(2x) last time at TU, 1/27/19	Career	2	(2x) last time vs. GW, 12/28/18
3-POINT FIELD GOALS			MISCELLANEOUS		
Season	4	vs. Howard, 11/12/18	Career in Double Figures		2
Career	4	vs. Howard, 11/12/18	2018-19 in Double Figures		2

#### >> KRAUSE'S CAREER STATISTICS

Season	GP	GS	Min/Avg	FG-FGA	Pct	3pt-Att	Pct	FT-FTA	Pct	Off	Def	Reb	Avg	PF	FO	A	TO	Blk	S	TP	Avg
2018-19	18	2	270/15.0	28-81	.346	20-60	.333	6-11	.545	10	30	40	2.2	29	0	11	7	9	6	82	4.6
<b>CAREER</b>	<b>18</b>	<b>2</b>	<b>270/15.0</b>	<b>28-81</b>	<b>.346</b>	<b>20-60</b>	<b>.333</b>	<b>6-11</b>	<b>.545</b>	<b>10</b>	<b>30</b>	<b>40</b>	<b>2.2</b>	<b>29</b>	<b>0</b>	<b>11</b>	<b>7</b>	<b>9</b>	<b>6</b>	<b>82</b>	<b>4.6</b>





# #20 CHANDLER SMITH

SENIOR - CENTER

PORT TOBACCO, MD. - ST. MARY'S RYKEN

## >> SMITH'S CAREER HIGHS

### MINUTES

Season 8 (2x) last time vs. ECU, 11/27/18  
Career 18 at Delaware, 1/26/16

### POINTS

Season 1 vs. Howard, 11/12/18  
Career 4 (4x) last time at SFU 12/2/17

### REBOUNDS

Season 3 vs. East Carolina, 11/27/18  
Career 5 vs. Hofstra, 2/7/17

### FIELD GOALS

Season -  
Career 2 (3x) last time at SFU, 12/2/17

### 3-POINT FIELD GOALS

Season -  
Career -

### FREE THROWS

Season 1 vs. Howard, 11/12/18  
Career 4 vs. Hofstra, 2/7/17

### ASSISTS

Season 1 vs. Richmond, 12/5/18  
Career 1 (3x) last time vs. UofR, 12/5/18

### STEALS

Season -  
Career 2 (2x) last time vs. Mount St. Mary's, 12/18/16

### BLOCKS

Season 1 (3x) last time at JMU 1/25/19  
Career 3 vs. Mount St. Mary's, 12/18/16

### MISCELLANEOUS

Career in Double Figures 0  
2017-18 in Double Figures 0

## >> SMITH'S CAREER STATISTICS

Season	GP	GS	Min/Avg	FG-FGA	Pct	3pt-Att	Pct	FT-FTA	Pct	Off	Def	Reb	Avg	PF	FO	A	TO	Blk	S	TP	Avg
2015-16	19	0	97/5.1	3-12	.250	0-0	.000	0-6	.000	2	10	12	0.6	13	0	0	5	4	3	6	0.3
2016-17	13	0	77/5.9	6-21	.286	0-0	.000	7-8	.875	2	22	24	1.8	16	1	1	7	11	3	19	1.5
2017-18	21	0	86/4.1	5-17	.294	0-0	.000	0-0	.000	4	8	12	0.6	15	0	3	8	9	1	10	0.5
2018-19	9	0	35/3.9	0-1	.000	0-0	.000	1-2	.500	1	7	8	0.9	6	0	1	5	3	0	1	0.1
<b>CAREER</b>	<b>62</b>	<b>0</b>	<b>294/4.8</b>	<b>14-51</b>	<b>.275</b>	<b>0-0</b>	<b>.000</b>	<b>8-16</b>	<b>.500</b>	<b>9</b>	<b>47</b>	<b>56</b>	<b>0.9</b>	<b>50</b>	<b>1</b>	<b>5</b>	<b>25</b>	<b>27</b>	<b>7</b>	<b>36</b>	<b>0.6</b>



# #21 BAILEY EICHNER

SOPHOMORE - GUARD/FORWARD

CUDAHY, WISC. - CUSAHY

## >> EICHNER'S CAREER HIGHS

### MINUTES

Season 13 vs. GW, 12/28/18  
Career 13 vs. GW, 12/28/18

### POINTS

Season 2 at Old Dominion, 12/8/18  
Career 4 vs. James Madison, 2/2/18

### REBOUNDS

Season 6 at Old Dominion, 12/8/18  
Career 6 at Old Dominion, 12/8/18

### FIELD GOALS

Season 1 at Old Dominion, 12/8/18  
Career 1 (3x) last time at ODU, 12/8/18

### 3-POINT FIELD GOALS

Season -  
Career -

### FREE THROWS

Season 1 vs. VCU, 11/6/18  
Career 2 vs. James Madison, 2/2/18

### ASSISTS

Season 1 (2x) last time at Hofstra, 1/4/19  
Career 2 at Hofstra, 1/19/18

### STEALS

Season 2 at Old Dominion, 12/8/18  
Career 2 at Old Dominion, 12/8/18

### BLOCKS

Season 1 vs. GW, 12/28/18  
Career 1 (2x) last time vs. GW, 12/28/18

### MISCELLANEOUS

Career in Double Figures 0  
2017-18 in Double Figures 0

## >> EICHNER'S CAREER STATISTICS

Season	GP	GS	Min/Avg	FG-FGA	Pct	3pt-Att	Pct	FT-FTA	Pct	Off	Def	Reb	Avg	PF	FO	A	TO	Blk	S	TP	Avg
2017-18	16	0	46/2.9	2-6	.333	0-2	.000	4-8	.500	6	9	15	0.9	14	0	2	7	2	1	8	0.5
2018-19	12	0	72/6.0	1-9	.111	0-3	.000	1-2	.500	4	11	15	1.3	8	0	2	4	1	3	3	0.3
<b>CAREER</b>	<b>28</b>	<b>0</b>	<b>118/4.2</b>	<b>3-15</b>	<b>.200</b>	<b>0-5</b>	<b>.000</b>	<b>5-10</b>	<b>.500</b>	<b>10</b>	<b>20</b>	<b>30</b>	<b>1.1</b>	<b>22</b>	<b>0</b>	<b>4</b>	<b>11</b>	<b>3</b>	<b>4</b>	<b>11</b>	<b>0.4</b>

## >> 2018-19 GAME-BY-GAME

Opp	Date	GS	Min	FG-A	3FG-A	FT-A	Reb.	A	TO	BLK	STL	PTS
VCU	11/6	8	0-0	0-0	0-0	2	0	0	0	0	0	0
HOW	11/12	4	0-0	0-0	1-2	2	0	1	1	0	1	0
at Loy	11/17	4	0-1	0-0	0-0	0	0	0	1	0	0	0
at DC	11/24											
ECU	11/27	8	0-0	0-0	0-0	3	0	2	0	0	0	0
at Hart	11/30											
at Fair	12/2											
UOFR	12/5	5	0-0	0-0	0-0	1	1	0	0	0	0	0
at ODU	12/8											
at NSU	12/21	2	0-0	0-0	0-0	0	0	0	0	0	0	0
GW	12/28	1	0-0	0-0	0-0	0	0	1	0	0	0	0
at Hof	1/4											
at NU	1/6											
UNCW	1/11											
COFC	1/13											
ELON	1/20											
at JMU	1/25	2	0-0	0-0	0-0	0	0	0	1	0	0	0
at Tow	1/27	1	0-0	0-0	0-0	0	0	1	0	0	0	0

## >> 2018-19 GAME-BY-GAME

Opp	Date	GS	Min	FG-A	3FG-A	FT-A	Reb.	A	TO	BLK	STL	PTS
VCU	11/6	11	0-2	0-1	1-2	1	0	1	0	0	1	0
HOW	11/12	1	0-0	0-0	0-0	0	0	1	0	0	0	0
at Loy	11/17	1	0-0	0-0	0-0	0	0	0	0	0	0	0
at DC	11/24											
ECU	11/26											
at Hart	11/30											
at Fair	12/2											
UOFR	12/5											
at ODU	12/8	11	1-2	0-0	0-0	6	0	0	0	0	2	0
at NSU	12/21	7	0-2	0-1	0-0	2	0	0	0	1	0	0
GW	12/28	13	0-1	0-1	0-0	2	1	0	1	0	0	0
at Hof	1/4	8	0-0	0-0	0-0	1	1	0	0	0	0	0
at NU	1/6	6	0-1	0-0	0-0	1	0	0	0	0	0	0
UNCW	1/11	3	0-0	0-0	0-0	0	0	0	0	0	0	0
COFC	1/13											
ELON	1/20	1	0-0	0-0	0-0	0	0	1	0	0	0	0
at JMU	1/25	9	0-1	0-0	0-0	2	0	0	0	0	0	0
at Tow	1/27	2	0-0	0-0	0-0	0	0	0	1	0	0	0



# #25 GABBY ROGERS

## SOPHOMORE - CENTER

### DALLAS, TEXAS - BISHOP LYNCH

#### >> ROGERS' CAREER HIGHS

##### MINUTES

Season	30	at Fairfield, 12/2/18
Career	30	at Fairfield, 12/2/18

##### POINTS

Season	10	at Davidson, 11/24/18
Career	10	at Davidson, 11/24/18

##### REBOUNDS

Season	5	(3x) last time vs. CofC, 1/13/19
Career	5	(3x) last time vs. CofC, 1/13/19

##### FIELD GOALS

Season	4	(3x) last time at Fair., 12/2/18
Career	4	(4x) last time at Fair., 12/2/18

##### 3-POINT FIELD GOALS

Season	-	
Career	-	

##### FREE THROWS

Season	2	(3x) last time at NU, 1/6/19
Career	2	(6x) last time at NU, 1/6/19

##### ASSISTS

Season	1	(5x) last time vs. CofC, 1/13/19
Career	1	(12x) last time vs. CofC, 1/13/19

##### STEALS

Season	3	(2x) last time at Hofstra, 1/4/19
Career	3	(3x) last time at Hofstra, 1/4/19

##### BLOCKS

Season	2	vs. Elon, 1/20/19
Career	2	(3x) last time vs. Elon, 1/20/19

##### MISCELLANEOUS

Career in Double Figures	1
2018-19 in Double Figures	1

#### >> 2018-19 GAME-BY-GAME

Opp	Date	GS	Min	FG-A	3FG-A	FT-A	Reb.	A	TO	BLK	STL	Pts
VCU	11/6	*	18	1-2	0-0	2-2	1	0	2	0	0	4
HOW	11/12	*	19	1-2	0-0	0-0	3	0	2	1	0	2
at Loy	11/17	*	16	4-6	0-0	0-0	2	1	0	0	0	8
at DC	11/24	*	27	4-8	0-1	2-2	2	0	1	0	1	10
ECU	11/27	*	15	0-1	0-0	0-0	2	0	3	0	1	0
at Hart	11/30	*	18	1-2	0-0	0-0	1	0	0	1	3	2
at Fair	12/2	*	30	4-7	0-0	0-0	5	1	0	0	1	8
UOFR	12/5	*	29	2-7	0-0	1-2	5	0	1	0	0	5
at ODU	12/8	*	11	3-5	0-0	0-0	2	0	0	0	0	6
at NSU	12/21	*	10	1-3	0-0	0-0	3	0	0	0	0	2
GW	12/28	*	12	1-2	0-0	0-0	3	0	0	0	1	2
at Hof	1/4	*	21	2-3	0-0	0-0	2	1	0	0	3	4
at NU	1/6	*	17	0-2	0-0	2-2	1	1	1	0	0	2
UNCW	1/11		11	0-1	0-0	0-0	3	0	2	1	1	0
COFC	1/13		21	1-5	0-0	1-2	5	1	1	1	2	3
ELON	1/20	*	23	2-3	0-0	0-0	4	0	1	0	2	5
at JMU	1/25	*	15	1-1	0-0	0-0	1	0	1	0	0	2
at Tow	1/27	*	15	2-5	0-0	0-0	2	0	2	0	0	4

#### >> ROGERS' CAREER STATISTICS

Season	GP	GS	Min/Avg	FG-FGA	Pct	3pt-Att	Pct	FT-FTA	Pct	Off	Def	Reb	Avg	PF	FO	A	TO	Blk	S	TP	Avg
2017-18	29	0	263/9.1	24-47	.511	0-0	.000	9-13	.692	12	40	52	1.8	55	1	7	15	6	10	57	2.0
2018-19	18	16	331/18.4	30-65	.462	0-1	.000	9-11	.818	14	33	47	2.6	54	0	5	17	6	13	69	3.8
<b>CAREER</b>	<b>47</b>	<b>16</b>	<b>594/12.6</b>	<b>54-112</b>	<b>.482</b>	<b>0-1</b>	<b>.000</b>	<b>18-24</b>	<b>.750</b>	<b>26</b>	<b>73</b>	<b>99</b>	<b>2.1</b>	<b>109</b>	<b>1</b>	<b>12</b>	<b>32</b>	<b>12</b>	<b>23</b>	<b>126</b>	<b>2.7</b>



# #30 VICTORIA REYNOLDS

## JUNIOR - FORWARD

### FAIRFAX, VA./ARCHBISHOP SPALDING

#### >> REYNOLDS' CAREER HIGHS

##### MINUTES

Season	37	(3x) last time vs. Elon, 1/20/19
Career	40	(2x) last time vs. UNCW, 2/16/18

##### POINTS

Season	17	vs. UNCW, 1/11/19
Career	22	at St. Francis (Pa.), 12/2/17

##### REBOUNDS

Season	15	vs. East Carolina, 11/27/18
Career	18	vs. Charleston, 1/26/18

##### FIELD GOALS

Season	6	(3x) last time at TU, 1/27/19
Career	9	vs. Northeastern, 2/11/18

##### 3-POINT FIELD GOALS

Season	2	(3x) last time vs. CofC, 1/13/19
Career	2	(5x) last time vs. CofC, 1/13/19

##### FREE THROWS

Season	6	(2x) last time at NSU, 12/21/18
Career	9	vs. Old Dominion, 12/17/17

##### ASSISTS

Season	7	vs. Charleston, 1/13/19
Career	8	at East Carolina, 11/21/17

##### STEALS

Season	4	vs. Charleston, 1/13/19
Career	7	vs. Hofstra, 1/28/18

##### BLOCKS

Season	3	at Norfolk State, 12/21/18
Career	3	(3x) last time vs. NSU, 12/21/18

##### MISCELLANEOUS

Career in Double Figures	30
2018-19 in Double Figures	11

#### >> 2018-19 GAME-BY-GAME

Opp	Date	GS	Min	FG-A	3FG-A	FT-A	Reb.	A	TO	BLK	STL	Pts
VCU	11/6	*	37	4-7	0-0	0-0	4	5	2	0	0	8
HOW	11/12	*	26	3-10	0-2	4-6	5	3	1	0	2	10
at Loy	11/17	*	33	4-10	0-0	2-2	5	2	7	0	0	10
at DC	11/24	*	29	6-8	0-0	1-1	3	2	2	0	1	13
ECU	11/27	*	35	4-6	1-1	6-6	15	4	6	2	1	15
at Hart	11/30	*	29	1-6	0-0	2-2	7	1	5	0	3	4
at Fair	12/2	*	30	4-8	0-0	4-6	4	1	3	0	3	12
UOFR	12/5	*	35	5-8	2-2	2-2	6	0	5	0	1	14
at ODU	12/8	*	37	4-10	1-4	4-4	6	2	5	2	1	13
at NSU	12/21	*	35	2-5	1-2	6-8	9	2	2	3	1	11
GW	12/28		15	3-7	2-2	0-0	5	2	0	0	0	8
at Hof	1/4		13	0-1	0-0	0-0	1	0	4	0	0	0
at NU	1/6		30	4-10	1-3	0-0	3	2	5	0	2	9
UNCW	1/11	*	31	6-9	1-2	4-5	7	0	4	2	1	17
COFC	1/13	*	36	3-8	2-2	0-0	10	7	4	1	4	8
ELON	1/20	*	37	3-6	0-1	5-8	6	3	0	2	1	11
at JMU	1/25	*	34	1-4	1-2	2-2	0	0	2	0	1	5
at Tow	1/27	*	26	6-11	0-1	0-0	3	0	2	0	1	12

#### >> REYNOLDS' CAREER STATISTICS

Season	GP	GS	Min/Avg	FG-FGA	Pct	3pt-Att	Pct	FT-FTA	Pct	Off	Def	Reb	Avg	PF	FO	A	TO	Blk	S	TP	Avg
2016-17	28	0	466/16.6	51-104	.490	5-12	.417	36-46	.783	44	45	89	3.2	42	0	21	30	5	33	143	5.1
2017-18	30	30	977/32.6	125-270	.463	8-34	.235	50-68	.735	65	147	212	7.1	77	1	60	69	22	71	308	10.3
2018-19	18	15	546/30.3	63-134	.470	12-25	.480	42-52	.808	15	87	102	5.7	44	2	36	59	11	24	180	10.0
<b>CAREER</b>	<b>76</b>	<b>45</b>	<b>1989/26.2</b>	<b>239-508</b>	<b>.470</b>	<b>25-71</b>	<b>.352</b>	<b>128-166</b>	<b>.711</b>	<b>124</b>	<b>279</b>	<b>403</b>	<b>5.3</b>	<b>163</b>	<b>3</b>	<b>117</b>	<b>158</b>	<b>38</b>	<b>128</b>	<b>631</b>	<b>8.3</b>



# #32 CAROLINE STOVER

FRESHMAN - CENTER

PLYMPTON, MASS. - CARDINAL SPELLMAN

## >> 2018-19 GAME-BY-GAME

Opp	Date	GS	Min	FG-A	3FG-A	FT-A	Reb.	A	TO	BLK	STL	Pts
VCU	11/6			DNP								
HOW	11/12			DNP								
at Loy	11/17	1		0-2	0-0	0-0	0	0	0	0	0	0
at DC	11/24			DNP								
ECU	11/27			DNP								
at Hart	11/30			DNP								
at Fair	12/2			DNP								
UOFR	12/5			DNP								
at ODU	12/8			DNP								
at NSU	12/21			DNP								
GW	12/28	1		0-0	0-0	0-0	0	0	0	0	0	0
at Hof	1/4			DNP								
at NU	1/6			DNP								
UNCW	1/11			DNP								
COFC	1/13			DNP								
ELON	1/20			DNP								
at JMU	1/25			DNP								
at Tow	1/27			DNP								

## >> STOVER'S CAREER STATISTICS

MINUTES			FREE THROWS		
Season	1	at Loyola, 11/14/18	Season	-	
Career	1	at Loyola, 11/14/18	Career	-	
POINTS			ASSISTS		
Season	-		Season	-	
Career	-		Career	-	
REBOUNDS			STEALS		
Season	-		Season	-	
Career	-		Career	-	
FIELD GOALS			BLOCKS		
Season	-		Season	-	
Career	-		Career	-	
3-POINT FIELD GOALS			MISCELLANEOUS		
Season	-		Career in Double Figures		0
Career	-		2018-19 in Double Figures		0

## >> STOVER'S CAREER STATISTICS

Season	GP	GS	Min/Avg	FG-FGA	Pct	3pt-Att	Pct	FT-FTA	Pct	Off	Def	Reb	Avg	PF	FO	A	TO	Blk	S	TP	Avg
2018-19	2	0	1/0.5	0-2	.000	0-0	.000	0-0	.000	0	0	0	0.0	0	0	0	0	0	0	0	0.0
CAREER	2	0	1/0.5	0-2	.000	0-0	.000	0-0	.000	0	0	0	0.0	0	0	0	0	0	0	0	0.0



2018-19 Tribe Women's Basketball





**W&M Women's Basketball**  
**William & Mary Season Schedule/Results & Leaders (as of Jan 28, 2019)**  
**All games**

<b>RECORD:</b>	<b>OVERALL</b>	<b>HOME</b>	<b>AWAY</b>	<b>NEUTRAL</b>
ALL GAMES	11-7	6-2	5-5	0-0
CONFERENCE	4-3	2-1	2-2	0-0
NON-CONFERENCE	7-4	4-1	3-3	0-0

<b>Date</b>	<b>Opponent</b>	<b>Score</b>	<b>Att. High Points</b>	<b>High Rebounds</b>
11/06/18	VCU	55-72 L	684 (15)Boggs, Bianca	(6)Boggs, Bianca
11/12/18	HOWARD	W 88-75	564 (26)Boggs, Bianca	(9)Boggs, Bianca
11/17/18	at Loyola	W 65-49	352 (14)Boggs, Bianca	(6)Reynolds, Victoria
11/24/18	at Davidson	65-76 L	412 (18)Boggs, Bianca	(10)Boggs, Bianca
11/27/18	EAST CAROLINA	W 63-43	574 (15)Reynolds, Victoria	(15)Reynolds, Victoria
11/30/18	at HARTFORD	45-50 L	649 (14)Hodgson, Eva	(7)Reynolds, Victoria
12/02/18	at Fairfield	W 60-54	627 (22)Boggs, Bianca	(5)Hodgson, Eva
				(5)Rogers, Gabby
				(5)Boggs, Bianca
12/05/18	RICHMOND	W 65-55	634 (15)Hodgson, Eva	(6)Reynolds, Victoria
12/8/18	at Old Dominion	69-83 L	1802 (18)Birdsong, Harper	(6)Reynolds, Victoria
				(6)Eichner, Bailey
12/21/18	at Norfolk State	W 55-44	246 (14)Birdsong, Harper	(9)Reynolds, Victoria
12/29/18	GEORGE WASHINGTON	W 73-59	611 (26)Boggs, Bianca	(10)Boggs, Bianca
1/4/19	*at Hofstra	W 60-55	323 (22)Boggs, Bianca	(10)Boggs, Bianca
01/06/19	*at Northeastern	74-88 L	540 (21)Boggs, Bianca	(6)Boggs, Bianca
01/11/19	*UNCW	W 70-64	657 (25)Boggs, Bianca	(7)Reynolds, Victoria
				(7)Pollard, Nyla
01/13/19	*COL. OF CHARLESTON	54-66 L	582 (18)Boggs, Bianca	(10)Reynolds, Victoria
01/20/19	*ELON	W 65-60	904 (13)Birdsong, Harper	(6)Reynolds, Victoria
			(13)Boggs, Bianca	
1/25/19	*at James Madison	48-65 L	2234 (13)Hodgson, Eva	(11)Boggs, Bianca
1/27/19	*at Towson	W 80-69	609 (22)Boggs, Bianca	(8)Jones, Misha

\* - CAA game

<b>Attendance Summary</b>	<b>Games</b>	<b>Attend</b>	<b>Avg/Game</b>
Home	8	5210	651
Away	10	7794	779
Neutral	0	0	0
Total	18	13004	722



**W&M Women's Basketball**  
**William & Mary Combined Team Statistics (as of Jan 28, 2019)**  
**All games**

<b>RECORD:</b>	<b>OVERALL</b>	<b>HOME</b>	<b>AWAY</b>	<b>NEUTRAL</b>
ALL GAMES	11-7	6-2	5-5	0-0
CONFERENCE	4-3	2-1	2-2	0-0
NON-CONFERENCE	7-4	4-1	3-3	0-0

#	Player	gp-gs	min	avg	Total		3-Point		F-Throw		Rebounds				pf	dq	a	to	blk	stl	pts	avg
					fg-fga	fg%	3fg-fga	3fg%	ft-fa	ft%	off	def	tot	avg								
02	Boggs, Bianca	18-18	610	33.9	105-252	.417	27-77	.351	69-97	.711	26	99	125	6.9	44	2	67	71	13	41	306	17.0
12	Birdsong, Harper	18-4	356	19.8	63-160	.394	35-88	.398	22-31	.710	10	21	31	1.7	39	1	19	33	5	12	183	10.2
30	Reynolds, Victoria	18-15	546	30.3	63-134	.470	12-25	.480	42-52	.808	15	87	102	5.7	44	2	36	59	11	24	180	10.0
10	Hodgson, Eva	18-18	533	29.6	50-122	.410	15-45	.333	41-52	.788	15	33	48	2.7	50	1	55	48	7	24	156	8.7
11	Pollard, Nyla	18-14	531	29.5	27-90	.300	9-36	.250	22-32	.688	18	32	50	2.8	44	2	48	32	3	17	85	4.7
15	Krause, Emma	18-2	270	15.0	28-81	.346	20-60	.333	6-11	.545	10	30	40	2.2	29	0	11	7	9	6	82	4.6
05	Jones, Misha	18-3	242	13.4	24-54	.444	16-38	.421	14-16	.875	13	27	40	2.2	35	0	23	13	3	3	78	4.3
25	Rogers, Gabby	18-16	331	18.4	30-65	.462	0-1	.000	9-11	.818	14	33	47	2.6	54	0	5	17	6	13	69	3.8
00	Underwood, Libby	11-0	62	5.6	4-12	.333	0-3	.000	2-4	.500	3	0	3	0.3	1	0	2	6	1	1	10	0.9
21	Eichner, Bailey	12-0	72	6.0	1-9	.111	0-3	.000	1-2	.500	4	11	15	1.3	8	0	2	4	1	3	3	0.3
03	Taylor, Ashley	4-0	11	2.8	0-5	.000	0-4	.000	1-2	.500	0	0	0	0.0	0	0	0	0	0	0	1	0.3
20	Smith, Chandler	9-0	35	3.9	0-1	.000	0-0	.000	1-2	.500	1	7	8	0.9	6	0	1	5	3	0	1	0.1
32	Stover, Caroline	2-0	1	0.5	0-2	.000	0-0	.000	0-0	.000	0	0	0	0.0	0	0	0	0	0	0	0	0.0
Team											35	45	80				8					
Total.....		0	3600		395-987	.400	134-380	.353	230-312	.737	164	425	589	0.0	354	8	269	303	62	144	1154	0.0
Opponents.....		0	3599		391-990	.395	76-303	.251	269-384	.701	215	457	672	0.0	353	7	203	332	64	161	1127	0.0

TEAM STATISTICS			WM	OPP	Date	Opponent	Score	Att.
SCORING			1154	1127	11/06/18	VCU	L 55-72	684
Points per game			64.1	62.6	11/12/18	HOWARD	w 88-75	564
Scoring margin			+1.5	-	11/17/18	at Loyola	w 65-49	352
FIELD GOALS-ATT			395-987	391-990	11/24/18	at Davidson	L 65-76	412
Field goal pct			.400	.395	11/27/18	EAST CAROLINA	w 63-43	574
3 POINT FG-ATT			134-380	76-303	11/30/18	at HARTFORD	L 45-50	649
3-point FG pct			.353	.251	12/02/18	at Fairfield	w 60-54	627
3-pt FG made per game			7.4	4.2	12/05/18	RICHMOND	w 65-55	634
FREE THROWS-ATT			230-312	269-384	12/8/18	at Old Dominion	L 69-83	1802
Free throw pct			.737	.701	12/21/18	at Norfolk State	w 55-44	246
F-Throws made per game			12.8	14.9	12/29/18	GEORGE WASHINGTON	w 73-59	611
REBOUNDS			589	672	* 1/4/19	at Hofstra	w 60-55	323
Rebounds per game			32.7	37.3	* 01/06/19	at Northeastern	L 74-88	540
Rebounding margin			-4.6	-	* 01/11/19	UNCW	w 70-64	657
ASSISTS			269	203	* 01/13/19	COL. OF CHARLESTON	L 54-66	582
Assists per game			14.9	11.3	* 01/20/19	ELON	w 65-60	904
TURNOVERS			303	332	* 1/25/19	at James Madison	L 48-65	2234
Turnovers per game			16.8	18.4	* 1/27/19	at Towson	w 80-69	609
Turnover margin			+1.6	-	* - CAA game			
Assist/turnover ratio			0.9	0.6				
STEALS			144	161				
Steals per game			8.0	8.9				
BLOCKS			62	64				
Blocks per game			3.4	3.6				
ATTENDANCE			5210	7794				
Home games-Avg/Game			8-651	10-779				
Neutral site-Avg/Game			-	0-0				

Score by Periods	1st	2nd	3rd	4th	Totals
William & Mary	286	288	311	269	1154
Opponents	273	264	307	283	1127



**W&M Women's Basketball**  
**William & Mary Combined Team Statistics (as of Jan 28, 2019)**  
**CAA games only**

RECORD:	OVERALL	HOME	AWAY	NEUTRAL
ALLGAMES	4-3	2-1	2-2	0-0
CONFERENCE	4-3	2-1	2-2	0-0
NON-CONFERENCE	0-0	0-0	0-0	0-0

#	Player	gp-gs	min	avg	Total		3-Point		F-Throw		Rebounds				pf	dq	a	to	blk	stl	pts	avg
					fg-fga	fg%	3fg-fga	3fg%	ft-fga	ft%	off	def	tot	avg								
02	Boggs, Bianca	7-7	232	33.1	40-104	.385	15-35	.429	34-51	.667	14	37	51	7.3	22	2	22	23	3	11	129	18.4
10	Hodgson, Eva	7-7	219	31.3	21-51	.412	7-19	.368	23-26	.885	9	11	20	2.9	19	1	18	19	5	8	72	10.3
30	Reynolds, Victoria	7-5	206	29.4	23-49	.469	5-11	.455	11-15	.733	5	24	29	4.1	17	0	12	21	4	11	62	8.9
12	Birdsong, Harper	7-0	131	18.7	21-65	.323	11-34	.324	9-12	.750	5	11	16	2.3	16	0	5	10	3	2	62	8.9
05	Jones, Misha	7-2	130	18.6	13-28	.464	11-22	.500	9-10	.900	4	17	21	3.0	18	0	12	6	1	2	46	6.6
11	Pollard, Nyla	7-7	217	31.0	10-31	.323	4-13	.308	10-14	.714	10	10	20	2.9	17	1	20	11	2	4	34	4.9
15	Krause, Emma	7-2	96	13.7	9-26	.346	6-20	.300	1-1	1.000	1	7	8	1.1	11	0	2	3	2	2	25	3.6
25	Rogers, Gabby	7-5	124	17.7	8-20	.400	0-0	.000	4-5	.800	4	14	18	2.6	19	0	3	8	4	6	20	2.9
00	Underwood, Libby	2-0	10	5.0	0-3	.000	0-1	.000	1-2	.500	2	0	2	1.0	0	0	1	1	0	0	1	0.5
03	Taylor, Ashley	1-0	3	3.0	0-1	.000	0-1	.000	0-0	.000	0	0	0	0.0	0	0	0	0	0	0	0	0.0
20	Smith, Chandler	2-0	3	1.5	0-0	.000	0-0	.000	0-0	.000	0	0	0	0.0	2	0	0	1	1	0	0	0.0
21	Eichner, Bailey	6-0	29	4.8	0-2	.000	0-0	.000	0-0	.000	0	4	4	0.7	4	0	1	2	0	0	0	0.0
Team											14	13	27					3				
Total.....		7	1400		145-380	.382	59-156	.378	102-136	.750	68	148	216	30.9	145	4	96	108	25	46	451	64.4
Opponents.....		7	1400		161-397	.406	25-118	.212	120-168	.714	101	184	285	40.7	146	4	74	117	27	58	467	66.7





TEAM STATISTICS	WM	OPP	Date	Opponent	Score	Att.
SCORING	451	467	* 1/4/19	at Hofstra	W 60-55	323
Points per game	64.4	66.7	* 01/06/19	at Northeastern	L 74-88	540
Scoring margin	-2.3	-	* 01/11/19	UNCW	W 70-64	657
FIELD GOALS-ATT	145-380	161-397	* 01/13/19	COL. OF CHARLESTON	L 54-66	582
Field goal pct	.382	.406	* 01/20/19	ELON	W 65-60	904
3 POINT FG-ATT	59-156	25-118	* 1/25/19	at James Madison	L 48-65	2234
3-point FG pct	.378	.212	* 1/27/19	at Towson	W 80-69	609
3-pt FG made per game	8.4	3.6	* - CAA game			
FREE THROWS-ATT	102-136	120-168				
Free throw pct	.750	.714				
F-Throws made per game	14.6	17.1				
REBOUNDS	216	285				
Rebounds per game	30.9	40.7				
Rebounding margin	-9.9	-				
ASSISTS	96	74				
Assists per game	13.7	10.6				
TURNOVERS	108	117				
Turnovers per game	15.4	16.7				
Turnover margin	+1.3	-				
Assist/turnover ratio	0.9	0.6				
STEALS	46	58				
Steals per game	6.6	8.3				
BLOCKS	25	27				
Blocks per game	3.6	3.9				
ATTENDANCE	2143	3706				
Home games-Avg/Game	3-714	4-926				
Neutral site-Avg/Game	-	0-0				

Score by Periods	1st	2nd	3rd	4th	Totals
William & Mary	111	109	119	112	451
Opponents	116	104	132	115	467



# WILLIAM & MARY RADIO AND TV CHART

**NOTES: W&M looks to make it two in a row as it opens a two-game homestand against Delaware on Friday night. The Tribe was selected to finish sixth in the CAA by a vote of league head coaches. Senior Bianca Boggs leads the Tribe averaging 17.0 ppg and 6.9 rpg. Redshirt sophomore Harper Birdsong is second on the team with 10.2 points per game, while junior Victoria Reynolds rounds out the double-figure scorers at 10.0 ppg.**

NOTES: W&M looks to make it two in a row as it opens a two-game homestand against Delaware on Friday night. The Tribe was selected to finish sixth in the CAA by a vote of league head coaches. Senior Bianca Boggs leads the Tribe averaging 17.0 ppg and 6.9 rpg. Redshirt sophomore Harper Birdsong is second on the team with 10.2 points per game, while junior Victoria Reynolds rounds out the double-figure scorers at 10.0 ppg.				RECORD	2018-19	LAST YR	STATS	W&M	OPP	UD	OPP	W&M'S LAST THREE GAMES	
	OVERALL	11-7	16-14	FG%	.400	.395	.363	.362	Jan. 20	ELON*	W, 65-60		
	CAA	4-3	7-11	FT%	.737	.701	.645	.692	Boggs 13 pts, Birdsong 13 pts, Reynolds 11 pts				
	HOME	6-2	9-6	3PT%	.353	.251	.288	.294	Jan. 25	at James Madison*	L, 48-65		
	AWAY/NEUTRAL	5-5/0-0	7-7/0-1	POINTS	64.1	62.6	60.1	62.2	Hodgson 13 pts, Birdsong 12 pts, Boggs 8 pts, 11 reb				
				REBOUNDS	32.7	37.3	41.4	42.5	Jan. 27	at Towson*	W, 80-69		
				TURNOVERS	16.8	18.4	15.8	18.0	Boggs 22 pts, Hodgson 13 pts, Krause 13 pts				
<b>0 LIBBY UNDERWOOD, G</b> SO./5-9/RYE, N.H./PORTSMOUTH				<ul style="list-style-type: none"><li>Looking to expand her role during her second season with the Green and Gold.</li><li>Had six points and added a block and assist against VCU (11/6).</li><li>Scored a career-high 8 points and added out 3 assists against USC Upstate (12/5/17).</li><li>Added four points in a rebound against Drexel (1/9/18).</li><li>Grabbed a rebound in the CAA Quarterfinal against Elon (3/8/18).</li></ul>					<b>POINTS</b> 8 vs. USC Upstate (12/5/17) <b>REBOUNDS</b> 3 vs. Northeastern (1/21/18) <b>ASSISTS</b> 3 vs. USC Upstate (12/5/17) <b>LAST GAME: DNP - COACH'S DECISION</b>				
	PPG	0.9	FG%	.333						<b>POINTS</b> 20 vs. Florida (11/22/17) <b>REBOUNDS</b> 5 vs. Lipscomb (2/19/18) <b>ASSISTS</b> 3 vs. Lipscomb (2/19/18) <b>LAST GAME: DNP - TRANSFER RULE</b>			
	RPG	0.3	FT%	.500 (2-4)						<b>POINTS</b> 33 vs. St. Francis (Pa.) (12/2/17) <b>REBOUNDS</b> 11 (2x) last time vs. ECU (11/27/18) <b>ASSISTS</b> 8 at Delaware (2/9/18) <b>LAST GAME: 22 PTS, 7 REB, 3 AST</b>			
	APG	0.2	3PT%	.000									
<b>1 SYDNEY WAGNER, G</b> SO./5-6/PHOENIXVILLE, PA./SPRING FORD SENIOR HIGH (STETSON)				<ul style="list-style-type: none"><li>Transfer from Stetson that has to sit out the 18-19 season due to NCAA Transfer rule.</li><li>Appeared in 32 games with nine starters for the Hatters last season.</li><li>Scored a career-high 20 points against Florida.</li><li>Dropped 18 points against on 5-of-8 from 3-point range against Webber International.</li><li>Averaged 6.0 ppg and knocked down 42 triples during her freshman season at Stetson.</li></ul>					<b>POINTS</b> 33 vs. St. Francis (Pa.) (12/2/17) <b>REBOUNDS</b> 11 (2x) last time vs. ECU (11/27/18) <b>ASSISTS</b> 8 at Delaware (2/9/18) <b>LAST GAME: 22 PTS, 7 REB, 3 AST</b>				
	PPG	-	FG%	-						<b>POINTS</b> 9 vs. Howard (11/12/18) <b>REBOUNDS</b> 8 at Towson (1/27/19) <b>ASSISTS</b> 4 (3x) at Old Dominion (12/8/18) <b>LAST GAME: 8 PTS, 8 REB, 2 AST</b>			
	RPG	-	FT%	-						<b>POINTS</b> 18 at Hofstra (1/4/19) <b>REBOUNDS</b> 6 at Towson (1/27/19) <b>ASSISTS</b> 6 (3x) last time vs. Elon (1/20/19) <b>LAST GAME: 13 PTS, 6 REB, 5 AST</b>			
	SPG	-	3PT%	-						<b>POINTS</b> 14 vs. USC Upstate (12/5/17) <b>REBOUNDS</b> 12 vs. East Carolina (11/27/18) <b>ASSISTS</b> 5 (2x) last time vs. ODU (12/17/17) <b>LAST GAME: 8 PTS, 2 REB, 4 AST</b>			
<b>2 BIANCA BOGGS, G</b> SR./5-8/WALDORF, MD./ST. MARY'S RYKEN				<ul style="list-style-type: none"><li>Named team captain for the 2018-19 season.</li><li>Tabbed CAA Player of the Week for the week of Dec. 31.</li><li>Has 14 20-point games, including seven 20-point games this season.</li><li>Scored a career-high 33 points in a win at St. Francis (12/2/17).</li><li>Ranks 13th in school history with 1,188 career points.</li></ul>					<b>POINTS</b> 14 vs. USC Upstate (12/5/17) <b>REBOUNDS</b> 12 vs. East Carolina (11/27/18) <b>ASSISTS</b> 5 (2x) last time vs. ODU (12/17/17) <b>LAST GAME: 8 PTS, 2 REB, 4 AST</b>				
	PPG	17.0	FG%	.417						<b>POINTS</b> 18 vs. Old Dominion (12/8/18) <b>REBOUNDS</b> 5 (2x) last time vs. Charleston (1/13/19) <b>ASSISTS</b> 4 at Old Dominion (12/8/18) <b>LAST GAME: PLAYED 3 MINUTES</b>			
	RPG	6.9	FT%	.711 (69-97)						<b>POINTS</b> 14 vs. USC Upstate (12/5/17) <b>REBOUNDS</b> 12 vs. East Carolina (11/27/18) <b>ASSISTS</b> 5 (2x) last time vs. ODU (12/17/17) <b>LAST GAME: 8 PTS, 2 REB, 4 AST</b>			
	APG	3.7	3PT%	.351						<b>POINTS</b> 18 vs. Old Dominion (12/8/18) <b>REBOUNDS</b> 5 (2x) last time vs. Charleston (1/13/19) <b>ASSISTS</b> 4 at Old Dominion (12/8/18) <b>LAST GAME: PLAYED 3 MINUTES</b>			
<b>3 ASHLEY TAYLOR, G</b> JR./6-0/CHARLOTTESVILLE, VA./ST. ANNE'S BELLEFIELD				<ul style="list-style-type: none"><li>Has seen action in 21 games during her career with the Tribe.</li><li>Made her first career basket, a 3-pointer, in the win against USC Upstate (12/5/17).</li><li>Grabbed a pair of rebounds and added an assist against Loyola (11/25/17).</li><li>Hit a basket and grabbed a board at Elon (3/1/18)</li></ul>					<b>POINTS</b> 14 vs. USC Upstate (12/5/17) <b>REBOUNDS</b> 12 vs. East Carolina (11/27/18) <b>ASSISTS</b> 5 (2x) last time vs. ODU (12/17/17) <b>LAST GAME: 8 PTS, 2 REB, 4 AST</b>				
	PPG	0.3	FG%	.000						<b>POINTS</b> 18 vs. Old Dominion (12/8/18) <b>REBOUNDS</b> 5 (2x) last time vs. Charleston (1/13/19) <b>ASSISTS</b> 4 at Old Dominion (12/8/18) <b>LAST GAME: PLAYED 3 MINUTES</b>			
	RPG	0.0	FT%	.500 (1-2)						<b>POINTS</b> 14 vs. USC Upstate (12/5/17) <b>REBOUNDS</b> 12 vs. East Carolina (11/27/18) <b>ASSISTS</b> 5 (2x) last time vs. ODU (12/17/17) <b>LAST GAME: 8 PTS, 2 REB, 4 AST</b>			
	APG	0.0	3PT%	.000						<b>POINTS</b> 18 vs. Old Dominion (12/8/18) <b>REBOUNDS</b> 5 (2x) last time vs. Charleston (1/13/19) <b>ASSISTS</b> 4 at Old Dominion (12/8/18) <b>LAST GAME: PLAYED 3 MINUTES</b>			
<b>5 MISHA JONES, G/F</b> SR./5-9/MANASSAS PARK, VA./BATTLEFIELD				<ul style="list-style-type: none"><li>Named a team captain for the second straight season this year.</li><li>Matched a career-high with nine points on three, 3-pointers vs. UNCW (1/11).</li><li>Grabbed a career-high eight boards with eight points in the win at Towson (1/27).</li><li>Made her first career start against George Washington (12/28) and scored four points.</li><li>Scored a career-high nine points, including seven straight points in the win vs. Howard.</li></ul>					<b>POINTS</b> 14 vs. USC Upstate (12/5/17) <b>REBOUNDS</b> 12 vs. East Carolina (11/27/18) <b>ASSISTS</b> 5 (2x) last time vs. ODU (12/17/17) <b>LAST GAME: 8 PTS, 2 REB, 4 AST</b>				
	PPG	4.3	FG%	.444						<b>POINTS</b> 18 vs. Old Dominion (12/8/18) <b>REBOUNDS</b> 5 (2x) last time vs. Charleston (1/13/19) <b>ASSISTS</b> 4 at Old Dominion (12/8/18) <b>LAST GAME: PLAYED 3 MINUTES</b>			
	RPG	2.2	FT%	.875 (14-16)						<b>POINTS</b> 14 vs. USC Upstate (12/5/17) <b>REBOUNDS</b> 12 vs. East Carolina (11/27/18) <b>ASSISTS</b> 5 (2x) last time vs. ODU (12/17/17) <b>LAST GAME: 8 PTS, 2 REB, 4 AST</b>			
	APG	1.3	3PT%	.421						<b>POINTS</b> 18 vs. Old Dominion (12/8/18) <b>REBOUNDS</b> 5 (2x) last time vs. Charleston (1/13/19) <b>ASSISTS</b> 4 at Old Dominion (12/8/18) <b>LAST GAME: PLAYED 3 MINUTES</b>			
<b>10 EVA HODGSON, G</b> FR./5-9/RINDGE, N.H./NEW HAMPTON SCHOOL				<ul style="list-style-type: none"><li>Named CAA Rookie of the Week for the week of Dec. 3 and Jan. 7.</li><li>Scored a career-high 18 points in the CAA opening win at Hofstra (1/4).</li><li>Had 16 points, four rebounds, two assists, and two steals at Northeastern (1/6).</li><li>Netted 13 pts and grabbed a CH six boards with five dimes in the win at Towson (1/20).</li><li>Her parents and two brothers all played Division III basketball.</li></ul>					<b>POINTS</b> 14 vs. USC Upstate (12/5/17) <b>REBOUNDS</b> 12 vs. East Carolina (11/27/18) <b>ASSISTS</b> 5 (2x) last time vs. ODU (12/17/17) <b>LAST GAME: 8 PTS, 2 REB, 4 AST</b>				
	PPG	8.7	FG%	.410						<b>POINTS</b> 18 vs. Old Dominion (12/8/18) <b>REBOUNDS</b> 5 (2x) last time vs. Charleston (1/13/19) <b>ASSISTS</b> 4 at Old Dominion (12/8/18) <b>LAST GAME: PLAYED 3 MINUTES</b>			
	RPG	2.7	FT%	.788 (41-52)						<b>POINTS</b> 14 vs. USC Upstate (12/5/17) <b>REBOUNDS</b> 12 vs. East Carolina (11/27/18) <b>ASSISTS</b> 5 (2x) last time vs. ODU (12/17/17) <b>LAST GAME: 8 PTS, 2 REB, 4 AST</b>			
	APG	3.1	3PT%	.333						<b>POINTS</b> 18 vs. Old Dominion (12/8/18) <b>REBOUNDS</b> 5 (2x) last time vs. Charleston (1/13/19) <b>ASSISTS</b> 4 at Old Dominion (12/8/18) <b>LAST GAME: PLAYED 3 MINUTES</b>			
<b>11 NYLA POLLARD, G</b> SO./5-9/VIRGINIA BEACH, VA./PRINCESS ANNE				<ul style="list-style-type: none"><li>Made her first start of the year &amp; had a double-double (10 pts, 12 reb) vs. ECU (11/27).</li><li>Scored eight points, two rebounds, and four assists in the win at Towson (1/27).</li><li>Had nine points and added two rebounds, four assists, and a steal at Loyola (11/17).</li><li>Chipped in nine points and a career-high six helpers in the win vs. UNCW (1/11).</li><li>Scored a career-high 14 points, four assists, three rebounds against Upstate (12/5/17).</li></ul>					<b>POINTS</b> 14 vs. USC Upstate (12/5/17) <b>REBOUNDS</b> 12 vs. East Carolina (11/27/18) <b>ASSISTS</b> 5 (2x) last time vs. ODU (12/17/17) <b>LAST GAME: 8 PTS, 2 REB, 4 AST</b>				
	PPG	4.7	FG%	.300						<b>POINTS</b> 18 vs. Old Dominion (12/8/18) <b>REBOUNDS</b> 5 (2x) last time vs. Charleston (1/13/19) <b>ASSISTS</b> 4 at Old Dominion (12/8/18) <b>LAST GAME: PLAYED 3 MINUTES</b>			
	RPG	2.8	FT%	.688 (22-32)						<b>POINTS</b> 14 vs. USC Upstate (12/5/17) <b>REBOUNDS</b> 12 vs. East Carolina (11/27/18) <b>ASSISTS</b> 5 (2x) last time vs. ODU (12/17/17) <b>LAST GAME: 8 PTS, 2 REB, 4 AST</b>			
	APG	2.7	3PT%	.250						<b>POINTS</b> 18 vs. Old Dominion (12/8/18) <b>REBOUNDS</b> 5 (2x) last time vs. Charleston (1/13/19) <b>ASSISTS</b> 4 at Old Dominion (12/8/18) <b>LAST GAME: PLAYED 3 MINUTES</b>			
<b>12 HARPER BIRDSONG, G</b> R-SO./5-10/SUFFOLK, VA./NANSEMOND SUFFOLK (GW)				<ul style="list-style-type: none"><li>Set a career-high with 18 points and four assists at Old Dominion (12/8).</li><li>Notched 16 points and grabbed five rebounds at Northeastern (1/6).</li><li>Scored 16 points and had three steals against George Washington (12/28).</li><li>Had 14 points, a career-high five rebounds, and one assist at Norfolk State (12/21).</li><li>Appeared in nine games during her freshman season at George Washington.</li></ul>					<b>POINTS</b> 18 vs. Old Dominion (12/8/18) <b>REBOUNDS</b> 5 (2x) last time vs. Charleston (1/13/19) <b>ASSISTS</b> 4 at Old Dominion (12/8/18) <b>LAST GAME: PLAYED 3 MINUTES</b>				
	PPG	10.2	FG%	.394						<b>POINTS</b> 14 vs. USC Upstate (12/5/17) <b>REBOUNDS</b> 12 vs. East Carolina (11/27/18) <b>ASSISTS</b> 5 (2x) last time vs. ODU (12/17/17) <b>LAST GAME: 8 PTS, 2 REB, 4 AST</b>			
	RPG	1.7	FT%	.710 (22-31)						<b>POINTS</b> 18 vs. Old Dominion (12/8/18) <b>REBOUNDS</b> 5 (2x) last time vs. Charleston (1/13/19) <b>ASSISTS</b> 4 at Old Dominion (12/8/18) <b>LAST GAME: PLAYED 3 MINUTES</b>			
	APG	1.1	3PT%	.398						<b>POINTS</b> 18 vs. Old Dominion (12/8/18) <b>REBOUNDS</b> 5 (2x) last time vs. Charleston (1/13/19) <b>ASSISTS</b> 4 at Old Dominion (12/8/18) <b>LAST GAME: PLAYED 3 MINUTES</b>			
<b>15 EMMA KRAUSE, F</b> FR./6-2/PLANTATION, FLA./CARDINAL GIBBONS				<ul style="list-style-type: none"><li>Named CAA Rookie of the Week for the week of Dec. 24.</li><li>Made her first career start and played 12 minutes against UNCW (1/11).</li><li>Scored 13 points and grabbed four rebounds in the win at Towson (1/27).</li><li>Netted a career-high 14 points on four 3-pointers against Howard (11/12).</li><li>Hit three 3-pointers for nine points in the win against Elon (1/20).</li></ul>					<b>POINTS</b> 14 vs. USC Upstate (12/5/17) <b>REBOUNDS</b> 12 vs. East Carolina (11/27/18) <b>ASSISTS</b> 5 (2x) last time vs. ODU (12/17/17) <b>LAST GAME: 8 PTS, 2 REB, 4 AST</b>				
	PPG	4.6	FG%	.346						<b>POINTS</b> 18 vs. Old Dominion (12/8/18) <b>REBOUNDS</b> 5 (2x) last time vs. Charleston (1/13/19) <b>ASSISTS</b> 4 at Old Dominion (12/8/18) <b>LAST GAME: PLAYED 3 MINUTES</b>			
	RPG	2.2	FT%	.545 (6-11)						<b>POINTS</b> 14 vs. USC Upstate (12/5/17) <b>REBOUNDS</b> 12 vs. East Carolina (11/27/18) <b>ASSISTS</b> 5 (2x) last time vs. ODU (12/17/17) <b>LAST GAME: 8 PTS, 2 REB, 4 AST</b>			
	BPG	0.5	3PT%	.333						<b>POINTS</b> 18 vs. Old Dominion (12/8/18) <b>REBOUNDS</b> 5 (2x) last time vs. Charleston (1/13/19) <b>ASSISTS</b> 4 at Old Dominion (12/8/18) <b>LAST GAME: PLAYED 3 MINUTES</b>			
<b>20 CHANDLER SMITH, C</b> SR./6-3/PORT TOBACCO, MD./ST. MARY'S-RYKEN				<ul style="list-style-type: none"><li>Named a team captain for her senior season.</li><li>Key reserve in the post that has appeared in 62 career games.</li><li>Tied a career-high with four points in a win at St. Francis (12/1/17).</li><li>Grabbed a career-high five rebounds at Hofstra (2/7/17).</li><li>Rejected 27 shots during her career.</li></ul>					<b>POINTS</b> 4 (4x) last time at SFU (12/2/17) <b>REBOUNDS</b> 5 vs. Hofstra (2/7/17) <b>BLOCKS</b> 3 vs. Mount St. Mary's (12/18/16) <b>LAST GAME: PLAYED 1 MINUTE</b>				
	PPG	0.1	FG%	.000						<b>POINTS</b> 4 vs. James Madison (2/2/18) <b>REBOUNDS</b> 6 at Old Dominion (12/8/18) <b>ASSISTS</b> 2 vs. Hofstra (1/19/18) <b>LAST GAME: PLAYED 2 MINUTES</b>			
	RPG	0.9	FT%	.500 (1-2)						<b>POINTS</b> 4 vs. James Madison (2/2/18) <b>REBOUNDS</b> 6 at Old Dominion (12/8/18) <b>ASSISTS</b> 2 vs. Hofstra (1/19/18) <b>LAST GAME: PLAYED 2 MINUTES</b>			
	BPG	0.4	3PT%	-						<b>POINTS</b> 4 vs. James Madison (2/2/18) <b>REBOUNDS</b> 6 at Old Dominion (12/8/18) <b>ASSISTS</b> 2 vs. Hofstra (1/19/18) <b>LAST GAME: PLAYED 2 MINUTES</b>			
<b>21 BAILEY EICHNER, G/F</b> SO./6-1/CUDAHY, WISC./CUDAHY				<ul style="list-style-type: none"><li>Looking to expand her role this year after seeing action in 17 games last year.</li><li>Grabbed a career-high six rebounds at Old Dominion (12/8/18).</li><li>Had a career-high four points and added a career-high five rebounds vs. JMU (2/2/18).</li><li>Made her collegiate debut in last year's season opener at Howard (11/11/17).</li><li>Three sport athlete in high school playing basketball, volleyball, and track &amp; field.</li></ul>					<b>POINTS</b> 4 vs. James Madison (2/2/18) <b>REBOUNDS</b> 6 at Old Dominion (12/8/18) <b>ASSISTS</b> 2 vs. Hofstra (1/19/18) <b>LAST GAME: PLAYED 2 MINUTES</b>				
	PPG	0.3	FG%	.111						<b>POINTS</b> 4 vs. James Madison (2/2/18) <b>REBOUNDS</b> 6 at Old Dominion (12/8/18) <b>ASSISTS</b> 2 vs. Hofstra (1/19/18) <b>LAST GAME: PLAYED 2 MINUTES</b>			
	RPG	1.3	FT%	.500 (1-2)						<b>POINTS</b> 4 vs. James Madison (2/2/18) <b>REBOUNDS</b> 6 at Old Dominion (12/8/18) <b>ASSISTS</b> 2 vs. Hofstra (1/19/18) <b>LAST GAME: PLAYED 2 MINUTES</b>			
	APG	0.2	3PT%	.000						<b>POINTS</b> 4 vs. James Madison (2/2/18) <b>REBOUNDS</b> 6 at Old Dominion (12/8/18) <b>ASSISTS</b> 2 vs. Hofstra (1/19/18) <b>LAST GAME: PLAYED 2 MINUTES</b>			
<b>25 GABBY ROGERS, C</b> SO./6-1/DALLAS, TEXAS/BISHOP LYNCH				<ul style="list-style-type: none"><li>Center that has started 16 games this season for the Tribe.</li><li>Had eight points and tied a career-high with five rebounds in the win at Fairfield (12/2).</li><li>Scored a career-high 10 points and a steal at Davidson (11/24).</li><li>Notched a then-season-high eight points in the win at Loyola (11/17).</li><li>Made her first career start on opening night against VCU (11/6) scoring four points.</li></ul>					<b>POINTS</b> 10 at Davidson (11/24/18) <b>REBOUNDS</b> 5 (4x) vs. Charleston (1/13/19) <b>STEALS</b> 3 (3x) last time at Hofstra (1/4/19) <b>LAST GAME: 4 PTS, 2 REB IN 15 MINS</b>				
	PPG	3.8	FG%	.467						<b>POINTS</b> 22 vs. St. Francis (Pa.) (12/2/17) <b>REBOUNDS</b> 18 vs. Charleston (1/26/18) <b>STEALS</b> 7 vs. Hofstra (1/28/18) <b>LAST GAME: 12 PTS, 3 REB, 1 STL</b>			
	RPG	2.6	FT%	.818 (9-11)						<b>POINTS</b> 22 vs. St. Francis (Pa.) (12/2/17) <b>REBOUNDS</b> 18 vs. Charleston (1/26/18) <b>STEALS</b> 7 vs. Hofstra (1/28/18) <b>LAST GAME: 12 PTS, 3 REB, 1 STL</b>			
	SPG	0.8	3PT%	.000						<b>POINTS</b> 22 vs. St. Francis (Pa.) (12/2/17) <b>REBOUNDS</b> 18 vs. Charleston (1/26/18) <b>STEALS</b> 7 vs. Hofstra (1/28/18) <b>LAST GAME: 12 PTS, 3 REB, 1 STL</b>			
<b>30 VICTORIA REYNOLDS, F</b> JR./5-10/FAIRFAX, VA./ARCHBISHOP SPALDING				<ul style="list-style-type: none"><li>Recorded a double-double with 15 points and 15 rebounds against ECU (11/27/18).</li><li>Notched a season-high 17 points with 7 rebs vs. UNCW (1/11).</li><li>Scored 14 points and matched a career-high with two 3-pointers against UofR (12/5/18).</li><li>Poured in a career-high 22 points in the win at St. Francis (12/2/17).</li><li>Grabbed 18 boards in the win against Charleston (1/26/18).</li></ul>					<b>POINTS</b> 22 vs. St. Francis (Pa.) (12/2/17) <b>REBOUNDS</b> 18 vs. Charleston (1/26/18) <b>STEALS</b> 7 vs. Hofstra (1/28/18) <b>LAST GAME: 12 PTS, 3 REB, 1 STL</b>				
	PPG	10.0	FG%	.470						<b>POINTS</b> 22 vs. St. Francis (Pa.) (12/2/17) <b>REBOUNDS</b> 18 vs. Charleston (1/26/18) <b>STEALS</b> 7 vs. Hofstra (1/28/18) <b>LAST GAME: 12 PTS, 3 REB, 1 STL</b>			
	RPG	5.7	FT%	.808 (42-52)						<b>POINTS</b> 22 vs. St. Francis (Pa.) (12/2/17) <b>REBOUNDS</b> 18 vs. Charleston (1/26/18) <b>STEALS</b> 7 vs. Hofstra (1/28/18) <b>LAST GAME: 12 PTS, 3 REB, 1 STL</b>			
	SPG	1.3	3PT%	.480						<b>POINTS</b> 22 vs. St. Francis (Pa.) (12/2/17) <b>REBOUNDS</b> 18 vs. Charleston (1/26/18) <b>STEALS</b> 7 vs. Hofstra (1/28/18) <b>LAST GAME: 12 PTS, 3 REB, 1 STL</b>			
<b>32 CAROLINE STOVER, C</b> FR./6-3/PLYMPTON, MASS./CARDINAL SPELLMAN				<ul style="list-style-type: none"><li>Made her collegiate debut in the Tribe's win over Loyola.</li><li>Freshman post player looking to break into the post rotation this season.</li><li>Played four seasons of varsity basketball at Cardinal Spellman.</li><li>Ranked as the No. 131 in her class by Blue Star.</li><li>Tabbed to the Catholic Central League All-Star team.</li></ul>					<b>POINTS</b> - <b>REBOUNDS</b> - <b>STEALS</b> - <b>LAST GAME: DNP - COACH'S DECISION</b>				
	PPG	0.0	FG%	.000						<b>POINTS</b> - <b>REBOUNDS</b> - <b>STEALS</b> - <b>LAST GAME: DNP - COACH'S DECISION</b>			
	RPG	0.0	FT%	-						<b>POINTS</b> - <b>REBOUNDS</b> - <b>STEALS</b> - <b>LAST GAME: DNP - COACH'S DECISION</b>			
	APG	0.0	3PT%	-						<b>POINTS</b> - <b>REBOUNDS</b> - <b>STEALS</b> - <b>LAST GAME: DNP - COACH'S DECISION</b>			

**NOTES:**