



WILLIAM & MARY

MEDIA RELATIONS DIRECTOR: Andrew Phillips / PHONE: (757) 221-3344 / CELL: (804) 840-4439 / EMAIL: atphillips01@wm.edu

TRIBE BY THE NUMBERS

2-1

W&M is 2-1 for the fifth straight season. The Tribe is 3-1 in the last four years in its fourth game of the season. W&M has never started a season 3-0 in the Division I era.

11

W&M drained the sixth-most 3-pointers in school history with 11 against Howard. It was the most in a game since Jan. 26, 2014.

18

Head coach Ed Swanson now has 482 career victories, which puts him just 18 wins away from his 500th career victory.

20

Bianca Boggs enters today's game with 980 points and is 20 points away from becoming the 20th player in school history to score 1000 points.

31

W&M has won 31 true road games in the six seasons under head coach Ed Swanson. That includes a school record tying eight road wins in 2016-17.

53

The senior class – Bianca Boggs, Misha Jones, and Chandler Smith – have won 53 games. They are just 14 wins away from becoming the winningest class in school history.

70

70 seems to be a magic number under Swanson. W&M has reached that mark 41 times under Swanson, and has posted a 36-5 mark when it scores more than 70 points.

100

W&M is celebrating 100 years of women on campus this academic year.

WHEN REFERENCING WILLIAM & MARY AND TRIBE:

William & Mary: preferred in all but formal treatments
W&M: most informal, use as second reference or on scorebug
College of William & Mary: preferred formal treatment
Do not use: WM, William and Mary, College of William and Mary, The College of William and Mary, The College

The William & Mary Athletics official nickname is the Tribe. While the Griffin is the official mascot of William & Mary Tribe Athletics, do not reference teams or the school as the Griffins.

GAME

4

WILLIAM & MARY (2-1, 0-0 CAA) vs. DAVIDSON (2-3, 0-0 A-10)

Saturday, Nov. 24, 2018 | 5:00 PM | Davidson, N.C. | John M. Belk Arena
Video: TribeAthletics.TV | Live Stats: TribeAthletics.com

SERIES HISTORY

ALL-TIME

W&M leads 5-1

Last: W&M, 73-55 (11/27/17) (Kaplan Arena)

AT DC

Series Tied 1-1

Last: DC, 47-69 (11/19/10) (John M. Belk Arena)

W&M NEWS AND NOTES

- The William & Mary women's basketball team looks to move its win streak to three games as it returns to action for the first time in a week closing a two-game road swing at Davidson Saturday. Tip-off between the Tribe and Wildcats is set for 5 p.m.

- After just shooting 30-percent from 3-point range last season, W&M has gotten off to a good start from range, shooting 38.6-percent and ranks third in the CAA at that clip.

- The Tribe scored 88 points in the victory against Howard, which is the most points since Jan. 14, 2018 when the Tribe topped eventual CAA Champion Elon 81-75. It was the 15th time the Green and Gold has topped the 80-point plateau under Swanson, improving its record to 14-1 in those games.

- Senior Misha Jones enjoyed her best career-game against Howard. The senior captain netted a career-high nine points, including a stretch where she scored seven in a row to build the Tribe's lead by seven at the break. Jones also converted her first career four-point play during that spurt. The senior captain is averaging 6.0 points per game.

- Freshman Emma Krause had a breakout game against the Bison as well. The freshman came off the bench to score 14 points grab two rebounds, and two blocks. Krause is third on the team in scoring at 7.7 points per game, in just 15.3 minutes per game.

- Senior Bianca Boggs has been in double-figures in all three games this season, and has accomplished that feat in 28 of her last 33 contests. Boggs was selected to the Preseason All-CAA First-Team after a breakout junior season. The senior captain became the first Tribe player in a decade to receive First-Team All-CAA honors as she claimed the award last season. She leads the team with 18.3 points per night and 6.7 rebounds.

- W&M has started freshman point guard Eva Hodgson in all three games this season and the early returns have been good. The freshman is averaging 7.0 points per game, with 2.3 rebounds. She handed out 12 helpers against just eight turnovers (1.5 a/t). Hodgson scored eight points in the opener against VCU.

- After being named to the all-rookie team as freshman, sophomore Nyla Pollard has found herself in a new role this year as the Tribe's sixth man. Pollard has come off the bench to spark the Green and Gold to the tune of 7.3 points, 2.0 rebounds, 1.3 steals, and 2.3 assists per game.

- The William & Mary women's basketball team was selected to finish sixth in the preseason poll by a vote of league head coaches. James Madison was selected to win the league, while Drexel was picked second. Two-time defending champion Elon and Delaware were picked in a tie for third.

- Coach Swanson and his staff will have four new players to work into the rotation this season. First is redshirt sophomore Harper Birdsong, who is eligible for the first time in her Tribe career after sitting out last year after transferring from George Washington. Birdsong appeared in nine games for the Colonials. The Tribe also has three – Eva Hodgson, Emma Krause, and Caroline Stover – true freshman that will also look to work into the rotation.

- There are two new members on the Tribe's coaching staff this season as well as Tierra Rudd joins the Tribe as an assistant coach, while Michelle Kurowski is the new director of basketball operations. Rudd joins the Tribe staff after three seasons at Western Carolina, while Kurowski starts her coaching career after being an elementary school teacher for the past four years.

	Nov. 6	VCU	L, 55-72	Senior Bianca Boggs scored 15 points, but the Tribe couldn't overcome an early scoring drought falling to in-state rival VCU on opening night.
	NOV. 12	HOWARD	W, 88-75	Four players scored in double-figures as the Tribe picked up its first victory of the season. Senior Bianca Boggs led the Tribe with 26 points, nine rebounds, and seven assists.
	Nov. 17	at Loyola (Md.)	W, 65-49	The Tribe led throughout as it won its first road game of the season with a convincing 65-49 decision at Davidson. Boggs (14) and Reynolds (10) were both in double-figures.
	Nov. 24	at Davidson Video: ESPN+	5 PM	The Tribe's two-game road trip as it heads to Davidson. The Tribe leads the series 5-1, and picked up a 73-55 victory last season in Kaplan Arena.
	NOV. 27	ECU Video: TribeAthletics.TV	7 PM	For the second time of four this season, W&M meets a former CAA rival when ECU visits Kaplan. The Pirates hold 33-13 series advantage, but W&M has won the last meetings.
	Nov. 30	at Hartford Video:	7 PM	W&M makes a weekend road trip to Connecticut and opens it at Hartford. It will be the first meeting between the two schools, and W&M's first game in the Constitution State.
	Dec. 2	at Fairfield	2 PM	For just the second time, the Tribe and Fairfield will meet on the basketball court. The first meeting came just a year ago, a 57-47 Green and Gold triumph.
	Dec. 5	RICHMOND Video: TribeAthletics.TV	7 PM	Two former CAA rivals, W&M and Richmond for the 112th time in series history. UofR leads the all-time series 83-27-1, but the Tribe has won the last two meetings.
	Dec. 8	at Old Dominion Video:	7 PM	The Tribe opens a two-game road swing at ODU. It will be the 94th meeting between the two programs, which the Monarchs lead 71-22. W&M has won the last three contests.
	Dec. 21	at Norfolk State Video:	2 PM	W&M looks to avenge an overtime to Norfolk State last year as the team's meet for the 23rd time. Despite last year's setback, W&M leads the all-time series 14-8.
	DEC. 29	GEORGE WASHINGTON Video: TribeAthletics.TV	2 PM	The Green and Gold plays host to defending A-10 champ George Washington for the first time since 2013. The all-time series is tied 10-10.
	Jan. 4	at Hofstra* Video: CAA.TV	7 PM	W&M looks for just its second win in Hempstead as it opens CAA play on the road for the fourth time in the last five years. Last year, the two teams split the season series.
	Jan. 6	at Northeastern* Video: CAA.TV	2 PM	The Tribe closes its two-game CAA opening road trip at Northeastern. The all-time series is tight at 11-10, but NU leads 8-3 in Boston.
	JAN. 11	UNCW Video: TribeAthletics.TV	7 PM	W&M will look to avenge last year's home loss to Newport News native Karen Barefoot and her Seahawks in the CAA home opener.
	JAN. 13	CHARLESTON Video: TribeAthletics.TV	2 PM	The Tribe hosts Charleston to close out its first home weekend. W&M has won the last two meetings against the Cougars, including a 79-66 victory in Kaplan Arena last year.
	JAN. 20	ELON * Video: TribeAthletics.TV	2 PM	In its lone game of the weekend, W&M hosts back-to-back CAA Champion Elon. The Tribe topped Elon 81-75 at Kaplan Arena last year.
	Jan. 25	at James Madison * Video: CAA.TV	7 PM	W&M opens a two-game road trip as it travels to CAA preseason favorite James Madison. W&M won at the Convo in 2016-17, and lost a tough 70-64 game last year.
	Jan. 27	at Towson* Video: CAA.TV	2 PM	The Tribe heads to SECU Arena looking for its third victory and its last four trips. W&M picked up a 75-63 victory in Maryland last season.
	FEB. 1	DELAWARE* Video: TribeAthletics.TV	7 PM	The Green and Gold opens February as it welcomes Delaware to Kaplan Arena. W&M is looking to snap a two-game skid against the Blue Hens.
	FEB. 3	DREXEL* Video: TribeAthletics.TV	2 PM	W&M plays on its 26th-consecutive Super Bowl Sunday as it welcomes Drexel for the Golden Game. The Tribe is 3-2 under Swanson on Super Sunday.
	Feb. 8	at Charleston* Video: CAA.TV	12 PM	The Tribe opens a season-long three-game road swing with an afternoon game at Charleston. W&M is 3-2 at Charleston since the Cougars joined the league.
	Feb. 10	at UNCW* Video: CAA.TV	2 PM	W&M heads to the Port City to close the weekend. The Tribe has won its last two games against UNCW at Trask Coliseum.
	Feb. 17	at Elon * Video: CAA.TV	1 PM	The Tribe heads to the brand new Schar Center as it closes out the regular season with Elon. The Phoenix have topped W&M in the last two CAA Tournaments.
	FEB. 22	TOWSON* Video: TribeAthletics.TV	7 PM	Towson and W&M close the regular season in Williamsburg this year. The Tigers squeaked out a one-point victory in its last trip to Kaplan Arena.
	FEB. 24	JAMES MADISON* Video: TribeAthletics.TV	2 PM	W&M will raise breast cancer awareness as it welcomes James Madison to Kaplan Arena. The Dukes have won the last two meetings in Kaplan Arena.
	March 1	at Drexel* Video: CAA.TV	7 PM	Drexel and W&M meet for the final time in the regular season when the Tribe travels to Philly. The Dragons are the defending CAA regular season champion.
	March 3	at Delaware* Video: CAA.TV	2 PM	The Tribe heads to the site of the 2019 CAA Tournament when it travels to Delaware. W&M is 3-2 under Ed Swanson at Delaware during his tenure.
	MARCH 7	NORTHEASTERN* Video: TribeAthletics.TV	7 PM	The Green and Gold plays host to Northeastern in its penultimate regular season game. The Tribe has a seven-game winning streak against the Huskies in Williamsburg.
	MARCH 9	HOFSTRA* Video: TribeAthletics.TV	2 PM	W&M closes the regular season with the team it started CAA play against. The Tribe picked up a 63-53 victory over the Pride at Kaplan Arena last year.
	Mar. 13-16	CAA Championship		Delaware hosts the 2019 CAA Tournament at the Bob Carpenter Center in Newark, Del. The event runs from March 13-16.



GENERAL INFORMATION

Name: College of William & Mary
Location: Williamsburg, Va.
Founded: 1693 (2nd oldest college in U.S.)
Enrollment (includes graduate): 8,617
Nickname: Tribe
Colors: Green, Gold and Silver
Arena (capacity): Kaplan Arena (8,600)
Affiliation: NCAA Division I
Conference: Colonial Athletic Association (CAA)
President: Katherine A. Rowe (Carleton, 1984)
Chancellor: Robert M. Gates (William & Mary, 1965)
Director of Athletics: Samantha K. Huge (Gordon, 1992)

LAST GAME STARTERS

2

BIANCA BOGGS

Sr. • G • 5-9

Waldorf, Md./St. Mary's Ryken

G-GS	PPG	RPG	APG	FG%	3P%	FT%	STL	BLK
3-3	18.3	6.7	4.7	.447	.333	.900	6	1

- Named team captain for the 2018-19 season.
- Earned Preseason All-CAA honors after becoming the first Tribe player to be named First-Team All-CAA in a decade.
- Scored a career-high 33 points in a win at St. Francis (12/2/17).
- Just 20 points away from becoming the 20th player in school history to score 1000 pts.

10

EVA HODGSON

Fr. • G • 5-9

Rindge, N.H./New Hampton School

G-GS	PPG	RPG	APG	FG%	3P%	FT%	STL	BLK
3-3	6.3	2.3	4.0	.381	.167	.667	1	5

- Made her first career start and scored eight points with three assists against VCU (11/6).
- Grabbed five rebounds in the win against Howard (11/12).
- Handed out a career-high five dimes in the win at Loyola (11/17).
- Helped her high school to a 2015 State Championship.
- Her parents and two brothers all played Division III basketball.

12

HARPER BIRDSONG

R-So. • G • 5-10

Suffolk, Va./Nansmond Suffolk (GW)

G-GS	PPG	RPG	APG	FG%	3P%	FT%	STL	BLK
3-3	7.0	0.7	0.3	.471	.444	.250	2	1

- Makes her Tribe debut after sitting out all of last year because of NCAA Transfer rules.
- Sharp-shooter that should be one of the Tribe's best 3-point threats this season.
- Had a career-high 12 points in the win against Howard (11/12/18).
- Appeared in nine games during her freshman season at George Washington.
- Scored a then career-high nine points in a win at Rhode Island (2/8/17).

25

GABBY ROGERS

So. • C • 6-1

Dallas, Texas/Bishop Lynch

G-GS	PPG	RPG	APG	FG%	3P%	FT%	STL	BLK
3-3	4.7	2.0	0.3	.600	-	1.000	0	1

- Center that has started all three games this season for the Tribe
- Notched a season-high eight points in the win at Loyola (11/17).
- Made her first career start on opening night against VCU (11/6) scoring four points.
- Scored a career-high nine points in last year's season opener at Howard (11/11/17).
- Had a bucket and had four rebounds in the CAA Quarterfinals against Elon (3/8/18).

30

VICTORIA REYNOLDS

Jr. • F • 5-10

Fairfax, Va./Archbishop Spalding

G-GS	PPG	RPG	APG	FG%	3P%	FT%	STL	BLK
3-3	9.3	6.0	3.3	.407	.000	.750	2	0

- Started the last 33 games for the Tribe.
- Scored 10 points and grabbed eight rebounds, three assists, and two steals vs. Howard.
- Scored a career-high 22 points in the win at St. Francis (12/2/17).
- Grabbed 18 boards in the win against Charleston (1/26/18).
- Had seven steals in the win versus Hofstra (1/28/18).

TRIBE TRENDS

WILLIAM & MARY RECORD	
Overall.....	2-1
CAA Games.....	0-0
Leads at halftime.....	2-0
Trails at halftime.....	0-1
Tied at Halftime.....	0-0
Home.....	1-1
Away.....	1-0
Neutral.....	0-0
BY MONTH	
November.....	2-1
December.....	0-0
January.....	0-0
February.....	0-0
March.....	0-0
SCORING...	
W&M scores fewer than 40 pts.....	0-0
W&M scores 40-49.....	0-0
W&M scores 50-59.....	0-1
W&M scores 60-69.....	1-0
W&M scores 70-79.....	0-0
W&M scores 80+.....	1-0
Opp. scores fewer than 40 pts.....	0-0
Opp. scores 40-49.....	1-0
Opp. scores 50-59.....	1-0
Opp. scores 60-69.....	0-0
Opp. scores 70-79.....	0-0
Opp. scores 80+.....	0-0
FROM THE FIELD ...	
W&M shoots below 35%.....	0-0
W&M shoots better than 35%.....	2-1
W&M shoots better than 40%.....	2-1
W&M shoots better than 45%.....	1-0
W&M shoots better than 50%.....	1-0
FINAL MARGIN	
1-3 points.....	0-0
4-7 points.....	0-0
8-10 points.....	0-0
11-15 points.....	1-0
16+ points.....	1-1
In Overtime.....	0-0
BATTLE OF THE BOARDS	
Outrebounding opponent.....	1-0
Outrebounded by opponent.....	1-1
Rebounds are even.....	0-0
DOWN TO THE WIRE	
Leading with 5:00 left.....	2-0
Trailing with 5:00 left.....	0-1
Tied with 5:00 left.....	0-0
LAYING IT ON THE LINE...	
W&M attempts more free throws.....	0-0
Opp. attempts more free throws.....	2-1
Free Throws are even.....	0-0
JERSEY COLOR	
White.....	1-1
Green.....	1-0
Gold.....	0-0
Pink.....	0-0
STRENGTH OF OPPOSITION	
vs. Top 25 teams.....	0-0
vs. teams with a winning record.....	1-0
vs. teams .500 record.....	0-0
vs. teams with a losing record.....	1-0
STREAKING	
Coming off of a win.....	1-0
Coming off of a loss.....	1-0
Longest Winning Streak.....	W2
Longest Losing Streak.....	L1
Current Streak.....	W2

RESERVES

POS.	NO.	NAME	HT.	CL.	G-GS	PPG	RPG	APG	FG%	3P%	FT%	MISC.
G	0	Libby Underwood	5-9	So.	3-0	2.0	0.3	0.3	.500	.000	-	1 blk
NOTE: Scored six points in the second half of the game versus VCU (11/6).												
G	1	Sydney Wagner	5-6	So.	-	-	-	-	-	-	-	-
NOTE: Transfer from Stetson that has to sit out the 2018-19 season due to NCAA Transfer Rule												
G	3	Ashley Taylor	5-8	Jr.	1-0	0.0	0.0	0.0	-	-	-	-
NOTE: Has appeared in 21 career games in career.												
G/F	5	Misha Jones	5-9	Jr.	3-0	6.0	1.7	1.0	.600	.429	.600	1 blk
NOTE: Team captain, who scored a career-high nine points against Howard (11/12).												
G	11	Nyla Pollard	5-9	So.	3-0	7.3	2.0	2.3	.529	.667	.000	4 stl
NOTE: Named to the CAA All-Rookie Team last season. Has three double figure games last year.												
F	15	Emma Krause	6-2	Fr.	3-0	7.7	3.7	1.3	.500	.500	.250	3 blk
NOTE: Had a career-high 14 points in the win against Howard (11/12).												
C	20	Chandler Smith	6-3	Sr.	3-0	0.3	1.3	0.0	.000	-	.500	2 blk
NOTE: Named a team captain for 18-19; Reserve post that has appeared in 55 career games.												
G/F	21	Bailey Eichner	6-1	Fr.	3-0	0.3	0.3	0.0	.000	.000	.500	-
NOTE: Scored a career-high four-points and grabbed a career-high five boards vs. JMU (2/2)												
C	32	Caroline Stover	6-3	Fr.	1-0	0.0	0.0	0.0	.000	.000	.000	-
NOTE: Ranked as the No. 131 recruit in her class on BlueStar												

W&M INDIVIDUAL SUPERLATIVES

	16-17	17-18	18-19	Career		16-17	17-18	18-19	Career
Double-Digit Games					Double-Doubles	-	1	-	2
Bianca Boggs	8	25	3	45	Bianca Boggs	-	1	-	2
Victoria Reynolds	4	15	2	21	Victoria Reynolds	-	1	-	1
Nyla Pollard	-	3	-	3	Leading Scorer (times): - Boggs (3)				
Harper Birdson	-	-	1	1	Leading Rebounder (times): - Boggs (2), Reynolds (1)				
Emma Krause	-	-	1	1	Leading Assists (times): - Boggs (1), Hodgson (1), Reynolds (1)				
20-Point Games					Charges (times): - Rogers (2), Jones (2), Birdsong (1)				
Bianca Boggs	-	7	1	8	Three-Point Plays (Made/Attempted): - Boggs (4/4), Jones (1/1), Pollard (0/1)				
Victoria Reynolds	-	1	-	1	Four-Point Plays (Made/Attempted): - Jones (1/1)				
30-Point Games									
Bianca Boggs	-	1	-	1					
10-Rebound Games									
Victoria Reynolds	-	4	-	4					
Bianca Boggs	1	1	-	2					
10-Assist Games									
	16-17	17-18	18-19	Career					

**Team**

W&M scored 80+ points	11/12/2018	88 (88-75, W vs. Howard)
W&M scored 85+ points	11/12/2018	88 (88-75, W vs. Howard)
W&M scored 90+ points	12/2/2017	92 (92-86, W at St. Francis (Pa.))
W&M scored 95+ points	2/16/2014	97 (97-44 W, vs. UNCW)
Opponent scored 80+	3/1/2018	82 (61-82, L at Elon)
Opponent scored 85+	2/2/2017	86 (41-86, L vs. James Madison)
Opponent scored 90+	11/17/2017	92 (92-81 L, at St. John's)
W&M grabbed 50+ rebounds	12/29/2015	53 (75-64 W, vs. Old Dominion)
W&M grabbed 60+ rebounds	12/21/2006	60 (73-58 W, at Norfolk State)
Held an Opponent to 50 pts. or less	11/17/2018	49 (65-49 W, at Loyola)
Held an Opponent to 40 pts. or less	12/3/2016	39 (67-39, W vs. Richmond)
W&M was held under 50 pts.	2/18/2018	34 (34-54, L at Drexel)
Shot 50% from the field	11/17/2018	51.0% (26-for-51) (65-49, W at Loyola)
Shot 80-89% from the foul line (8 or more attempts)	2/23/2018	82.4% (14-for-17) (52-61, L vs. Delaware)
Shot 90-99% from the foul line (8 or more attempts)	2/9/2018	90.0 (9-for-10) (59-68, L at Delaware)
Shot 100% from the foul line (8 or more attempts)	2/28/2016	100.0% (8-8) (53-69 L, at Drexel)
Had a 20-pt. win	12/5/2017	20 (W, 83-63 vs. USC Upstate)
Had a 30-pt. win	11/28/2016	34 (W, 82-48 vs. Delaware State)
Had a 40-pt. win	2/16/2014	53 (97-44 W, vs. UNCW)
Had a 50-pt. win	2/16/2014	53 (97-44 W, vs. UNCW)
Had a 20-pt. loss	3/1/2018	21 (L, 61-82 at Elon)
Had a 30-pt. loss	2/2/2018	45 (L, 41-86 vs. James Madison)
An overtime win	11/21/2017	71-65, W at East Carolina
An overtime loss	1/9/2018	58-65, L vs. Drexel
A double-overtime game	2/6/2015	72-68, W at Drexel
A triple-overtime game	11/29/1999	77-83, L at VCU
10-game winning streak	2016-17	11 (11/18/2016-1/6/17)
5-game winning streak	2017-18	7 (11/21/2017-12/21/2017)
5-game losing streak	2017-18	7 (2/16/2018-11/12/2018)
10-game losing streak	2012-13	11 (11/25/2012-1/20/2013)

Individual

20-24 pts.	20, Nari Garner at James Madison, 3/3/18
25-29 pts.	26, Bianca Boggs vs. Howard, 11/12/18
30-34 pts.	33, Bianca Boggs at St. Francis (Pa.), 12/2/17
35-39 pts.	39, Lynn Norenberg at Virginia Wesleyan, 11/15/80
40+ pts.	53, Bebe Fisher vs. Norfolk Division, 2/13/52
5 players in double figures	Bianca Boggs (26), Victoria Reynolds (15), Abby Rendle (12), Nari Garner (11), Jenna Green (10) vs. College of Charleston, 1/26/18
Two players with 20 pts. or more	Jenna Green (22) and Bianca Boggs (21) at Towson, 2/4/18
Player with 10-14 rebounds	11, Victoria Reynolds vs. James Madison, 2/2/18
Player with 15-19 rebounds	16, Abby Rendle vs. Northeastern, 2/11/18
Player with 20 or more rebounds	21, Emily Correal vs. George Mason, 3/16/13
Two players with 10 or more rebounds	13, Abby Rendle and 11, Jenna Green vs. Fairfield, 11/14/17
A player with a triple-double	Abby Rendle (25 pts, 17 reb, 10 blks) at East Carolina, 11/21/17
A player with a double-double	Abby Rendle (11 pts, 16 reb) vs. Northeastern, 2/11/18
Two players with double-doubles	Victoria Reynolds (15 pts, 18 reb.), Abby Rendle (12 pts, 11 blks) and Jenna Green (10pts, 11 ast) vs. CofC, 1/26/18
100% from the field (min. 5 made)	7-for-7, Abby Rendle vs. Drexel, 3/1/17
100% from foul line (min. 5 made)	5-for-5, Bianca Boggs vs. Howard, 11/12/18
5-7 Assists	5, Eva Hodgson at Loyola, 11/17/18
8-9 Assists	8, Bianca Boggs at Delaware, 2/9/18
10+ Assists	11, Jenna Green vs. College of Charleston, 1/26/18
5 or more steals	5, Bianca Boggs vs. VCU, 11/6/18
5-9 blocks	6, Abby Rendle at Delaware, 2/9/18
10+ blocks	11, Abby Rendle vs. College of Charleston, 1/26/18

BOLD - Happened in the 2018-19 season

**LIBBY UNDERWOOD**

So. • Guard • 5-9
Rye, New Hampshire

**SYDNEY WAGNER**

So. • Guard • 5-6
Phoenixville, Pa.

**BIANCA BOGGS**

Sr. • Guard • 5-5
Waldorf, Md.

**ASHLEY TAYLOR**

Jr. • Guard • 6-0
Charlottesville, Va.

**MISHA JONES**

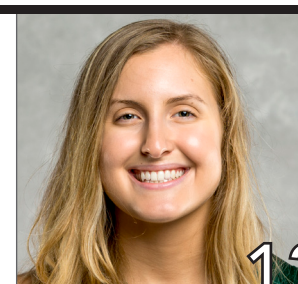
Sr. • Guard/Forward • 5-9
Manassas Park, Va.

**EVA HODGSON**

Fr. • Guard • 5-9
Rindge, New Hampshire

**NYLA POLLARD**

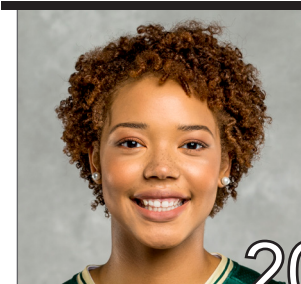
So. • Guard • 5-9
Virginia Beach, Va.

**HARPER BIRDSONG**

R-So. • Guard • 5-10
Suffolk, Va.

**EMMA KRUSE**

Jr. • Center • 6-3
Port Tobacco, Md.

**CHANDLER SMITH**

Sr. • Center • 6-3
Port Tobacco, Md.

**BAILEY EICHNER**

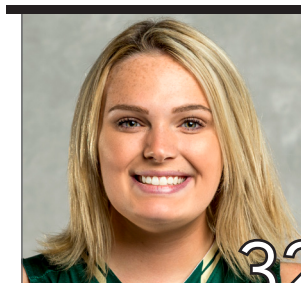
So. • Guard/Forward • 6-1
Cudahy, Wisc.

**GABBY ROGERS**

Fr. • Center • 6-1
Dallas, Texas

**VICTORIA REYNOLDS**

Jr. • Forward • 5-10
Fairfax, Va.

**CAROLINE STOVER**

Fr. • Center • 6-3
Plymton Mass.

**ED SWANSON**

Sixth Season at W&M
29th Overall

PRONUNCIATION GUIDE

Bailey **EICHNER** IKE-ner

Lynne **KOKOSKI**
Kah-kaw-ski

CHANEL Murchison Shh-nell



ED

SWANSON

HEAD COACH

29TH SEASON OVERALL

6TH SEASON AT W&M

PROFILE

Wife: Marion

Children: Connor and Matthew

Education

Sacred Heart, 1989

Coaching Career

Sacred Heart (1989-13)

William & Mary (2013-P)

CAREER HIGHLIGHTS

- Three NCAA Tournament Appearances
- Led W&M to 1st Division I Postseason berth in the WBI.
- Led W&M to a school record 20 wins in 2016-17
- 2016-17 VaSID Coach of the Year
- Six Postseason Appearances
- Four regular season conference championships and three postseason league titles
- 2009 New England Hall of Fame Inductee
- Eight 20-win seasons
- Five-time Conference Coach of the Year
- On five occasions, his teams have earned to the WBCA Academic Top 25 Team Honor

Ed Swanson enters his sixth season with the Green and Gold. He became the fifth Division I head women's basketball coach in William and Mary history on May 7, 2013. Prior to coming to Williamsburg, he spent 23 years transforming Sacred Heart University from a Division II program into a one of the top teams in the Northeast Conference. Swanson owns a career record of 464-327 (.587).

The success continued for the Tribe during the 2017-18 season. W&M won 16 games, which is tied for the fourth most in school history, and posted its second straight winning season for the first time since 2005-06 and 2006-07. His first recruiting class became the winningest class in school history with the team's victory over College of Charleston on Jan. 26. The seniors went onto win 66 games during their four year career. The Tribe raced out to an 11-2 start for the third straight season, which equaled the best 13-game start in school history, and led the CAA in blocked shots (218) and blocked shots per game (7.3), which ranked fourth and third in the NCAA, respectively. Both numbers are single-season school records. Individually, he mentored three players to five All-CAA awards, including All-CAA First-Team selection Bianca Boggs, who became the first Tribe player in a decade to be named to the league's first-team. Additionally, Boggs was named to the league's all-defensive team, while Abby Rendle claimed a spot on the All-CAA Third-Team, and All-Defensive Team, and freshman Nyla Pollard was picked to the CAA All-Rookie team.

Swanson led the Tribe to one of its best seasons in program history in 2016-17. The Tribe tied a school record with 20 wins, while winning a CAA Tournament game for the first time since 2009, and advancing to the CAA Semifinals for the first-time since 2001. Under his leadership, the Tribe won 11-straight games, which is the longest single-23056season streak in school history, from Nov. 18, 2016-Jan. 2, 2017. W&M had four players claim seven all-conference awards this season, including seniors Alexandra Masaquel and Marlena Tremba, who each earned second-team citations. Additionally, Masaquel was tabbed the Richmond Times-Dispatch All-State Second-Team, while Tremba earned VaSID All-State Second-Team honors. For his efforts, VaSID honored him as the Virginia State Coach of the Year.

Once again Swanson's third season was one for the record books. The Tribe raced out to its best start in school history with an 11-2 record. W&M went onto again to win the fourth most wins in school history with 15. For the second straight season the Tribe broke the blocks and assist record, by tying the single season assist record (466) and broke the school record for blocks with 148. During the season junior Marlena Tremba became the 15th player in school history to break the 1000-point barrier. Individually, four players earned All-CAA awards as junior Alexandra Masaquel was tabbed to the second-team and all-defensive team, Tremba earned third-team honors, and freshman Bianca Boggs picked up a spot on the all-rookie team. The Tribe was also rewarded for its hard work in the classroom as Masaquel, Tremba, and sophomore Jenna Green earned all-academic team honors.

Swanson's second year with the Green and Gold was one for the record books. The Tribe racked up 15 wins, the fourth-most in school history, on its way to its first-ever postseason appearances with bid in the Women's Basketball Invitational. The Green and Gold had a seven-win turnaround, while setting three school records for assists (466), blocked shots, (143), blocked shots per game (4.5). Individually he helped lead four players to five All-CAA awards. Sophomore Marlena Tremba was named to the All-CAA Third-Team, senior Jazmen Boone was named to the All-Defensive Team, freshman Abby Rendle to the All-Rookie and All-Defensive team, and senior Kyla Kerstetter earned all-academic honors.

In his first season with the Tribe, Swanson led a young team to eight victories in a seven-seed in the CAA Tournament. The Green and Gold finished in the top 10 nationally in steals per game, while Jazmen Boone also ranked in the top 20 in the NCAA in the same category. Under his guidance Kaitlyn Mathieu garnered Third-Team All-Colonial Athletic Association honors, and went on to sign a professional contract with a team in Germany. In addition, guard Marlena Tremba went onto win CAA Rookie of the Year, and was named to the all-rookie squad. Boone was named to the all-defensive team, while she and Kyla Kerstetter took home all-academic honors.

Swanson oversaw Sacred Heart's transition from Division II to Division I in 1999-00, and the program took off under his direction. Over Sacred Heart's 14 years in Division I, Swanson led SHU



to a 280-145 record (.664), including a 190-62 (.754) record in the NEC. He departed as the NEC's all-time winningest head coach with all of his SHU teams finishing third or higher in the league standings. Swanson-lead teams have posted 13 straight winning seasons and 12 straight campaigns with 18 or more victories, including six with 20 or more wins. In 2009, he was inducted into the New England Basketball Hall of Fame.

In total, Swanson-coached players earned 19 All-NEC honors, including nine first-team awards, nine NEC All-Tournament Team honors, eight NEC All-Rookie Team selections, four NEC Rookies of the Year, three NEC Tournament MVPs and three NEC Players of the Year.

His teams have also enjoyed success in the classroom. On five occasions, the Pioneers were selected to the Women's Basketball Coaches Association (WBCA) Academic Top 25 Team Honor Roll, which has recognized outstanding academic performances from the top teams in each of the five collegiate divisions since 1995-96. On eight occasions since 2003, one of his players was a CoSIDA Academic All-District selection and two Pioneer players were named NEC Scholar-Athlete of the Year.

In 2012-13, Swanson led Sacred Heart to its third straight postseason appearance, and in the process, recorded his 400th career victory. His milestone win came on Feb. 12, 2013 as the Pioneers defeated Fairleigh Dickinson. SHU completed the season at 22-11, finishing second in the NEC with a 13-5 ledger and garnering a berth in the program's first Women's National Invitational Tournament (WNIT).

Sacred Heart claimed its third NEC Championship and advanced to the NCAA Tournament in 2011-12. The Pioneers also ranked 23rd nationally in the WBCA Academic Top 25 Team Honor Roll with a team GPA of 3.35. SHU compiled a season mark to 25-8, winning both the regular season and postseason crowns in the league as Swanson was named NEC Coach of the Year for the fourth time.

The Pioneers earned a berth in the 2011 Women's Basketball Invitational and finished the year at 18-13 with a 12-6 mark in the NEC. After a 0-5 start to the 2008-09 season, Swanson's Pioneers reeled off a 21-game winning streak, the longest in school history and second longest in the country, before finishing with 25-8 record. SHU completed the NEC regular season with a perfect 18-0 mark, becoming just the third team in the history of the conference to accomplish the feat. Swanson earned NEC Coach of the Year honors as Sacred Heart finished off an amazing season by capturing its second league title and trip to the NCAA Tournament over a four-year span. During the 2008-09 season, Swanson moved past former Mount St. Mary's head coach Bill Sheahan (124) as all-time leader in Northeast Conference wins and eclipsing the 300-win plateau in his career.

The 2005-06 season saw Swanson lead the Sacred Heart program to its first NCAA Tournament, capturing the NEC Championship in just its seventh season at the Division I level. Swanson guided the Pioneers to a school record 26-5 record, including a 16-2 NEC ledger. He also garnered career victory No. 250 during the season.

Under his leadership, Sacred Heart was one of the toughest teams on its home court, the William H. Pitt Center, which opened in 1997. During the Pitt Center's opening 16 seasons, Swanson's teams won 81.9 percent (185-41) of its home games. In 2011-12, SHU went 15-1 at home, a season bested only by a perfect 15-0 in 2005-06 and 14-0 in 2003-04. During the stretch, the Pioneers' home winning percentage at the Pitt Center ranked among the best nationally.

After directing the Pioneers to a 20-7 record — the program's first 20-win season — in 1995-96, Swanson was voted Coach of the Year in the New England Collegiate Conference (NECC) and the Women's Basketball Coaches Association's (WBCA) District I.

Swanson took the reins of the Sacred Heart University women's basketball program in 1990 and built the Pioneers into one of the top teams in the Northeast. He joined Dave Bike's men's basketball coaching staff at SHU in 1989, and, after becoming head coach of the Pioneer women's program in 1990, did double duty for three seasons before becoming the University's first full-time women's coach in 1993. Prior to Swanson's arrival,

CAREER RECORD

YEAR	OVERALL RECORD	CONF. RECORD	CONF. FINISH	POST SEASON
1990-91	8-19	3-11	7th	
1991-92	11-16	5-9	T5th	
1992-93	16-13	7-7	4th	
1993-94	12-15	8-8	5th	
1994-95	11-16	7-9	5th	
1995-96	20-7	16-4	T2nd	
1996-97	14-14	10-8	5th	
1997-98	19-7	13-3	2nd	
1998-99	15-12	12-6	3rd	
1999-00	14-14	11-7	T3rd	
2000-01	15-14	11-7	T3rd	
2001-02	18-11	13-5	T2nd	
2002-03	18-10	12-6	T3rd	
2003-04	21-8	14-4	2nd	
2004-05	18-11	14-4	2nd	
2005-06	26-5	16-2	1st	NCAA
2006-07	22-10	15-3	T1st	
2007-08	19-11	14-4	3rd	
2008-09	25-8	18-0	1st	NCAA
2009-10	19-11	14-4	3rd	
2010-11	18-13	12-6	T3rd	WBI
2011-12	25-8	15-3	1st	NCAA
2012-13	22-11	13-5	2nd	WNIT
2013-14	8-21	5-11	8th	
2014-15	15-16	9-9	6th	WBI
2015-16	15-15	6-12	7th	
2016-17	20-11	9-9	4th	
2017-18	16-14	7-11	6th	
2018-19	2-1	0-0		
Career	482-342 (.585)	292-179 (.620)		
Division I	356-223 (.615)	227-114 (.666)		
W&M/CAA	76-78 (.494)	36-52 (.409)		

the Sacred Heart women's team compiled a 4-21 record. Under his guidance, the climb to Division II respectability was accomplished within three seasons, from 8-19 to 11-16 and, in 1992-93, to 16-13 — the program's first winning record in 11 seasons.

In his time at SHU, he was a four-time NEC Coach of the Year, led Sacred Heart to five postseason bids, including three NCAA Tournament appearances. Swanson guided the Pioneers to four NEC regular season crowns and three NEC tournament championships. SHU posted 20-win seasons seven times during his tenure, including five of the last eight years.

He earned a bachelor's degree in business from Sacred Heart in 1989. Also during his tenure at SHU, Swanson served as the moderator for the Pioneer Student-Athlete Council from 1998-01 and was the annual coordinator of commencement exercises since 2000. Swanson and his wife, Marion, have two sons, Connor and Matthew.



#0 LIBBY UNDERWOOD

SOPHOMORE - GUARD

RYE, N.H. - PORTSMOUTH

>> UNDERWOOD'S CAREER HIGHS

MINUTES		FREE THROWS	
Season	13 vs. VCU, 11/6/18	Season	-
Career	15 vs. USC Upstate, 12/5/17	Career	5 vs. USC Upstate, 12/5/17
POINTS		ASSISTS	
Season	6 vs. VCU, 11/6/18	Season	1 vs. VCU, 11/6/18
Career	8 vs. USC Upstate, 12/5/17	Career	3 vs. USC Upstate, 12/5/17
REBOUNDS		STEALS	
Season	1 vs. Howard, 11/12/18	Season	-
Career	3 at Northeastern, 1/21/18	Career	1 (2x) last time at UNCW, 12/31/17
FIELD GOALS		BLOCKS	
Season	3 vs. VCU, 11/6/18	Season	1 vs. VCU, 11/6/18
Career	3 vs. VCU, 11/6/18	Career	1 vs. VCU, 11/6/18
3-POINT FIELD GOALS		MISCELLANEOUS	
Season	-	Career in Double Figures	0
Career	1 (3x) last time vs. Upstate 12/5/17	2018-19 in Double Figures	0

>> UNDERWOOD'S CAREER STATISTICS

Season	GP	GS	Min/Avg	FG-FGA	Pct	3pt-Att	Pct	FT-FTA	Pct	Off	Def	Reb	Avg	PF	FO	A	TO	Blk	S	TP	Avg
2017-18	27	0	162/6.0	6-30	.200	3-15	.200	14-22	.636	2	14	16	0.6	10	0	8	21	0	2	29	1.1
2018-19	3	0	26/8.7	3-6	.500	0-1	.000	0-0	.000	1	0	1	0.3	0	0	1	1	1	0	6	2.0
CAREER	30	0	188/6.3	9-36	.250	3-16	.188	14-22	.636	3	14	17	0.6	10	0	9	22	1	2	35	1.2

> 2018-19 GAME-BY-GAME

Opp	Date	GS	Min	FG-A	3FG-A	FT-A	Reb.	A	TO	BLK	STL	PTS
VCU	11/6	14	3-4	0-1	0-0	0	1	1	0	1	6	
HOW	11/12	2	0-1	0-0	0-0	1	0	0	0	0	0	
at Loy	11/17	11	0-1	0-0	0-0	0	0	0	0	0	0	



#2 BIANCA BOGGS

SENIOR - GUARD

WALDORF, MD. - ST. MARY'S RYKEN

>> BOGGS' CAREER HIGHS

MINUTES		FREE THROWS	
Season	35 (2x) last time at Loy., 12/17/18	Season	5 vs. Howard, 11/12/18
Career	41 at East Carolina, 11/21/17	Career	8 (2x) last time vs. UD, 2/23/18
POINTS		ASSISTS	
Season	26 vs. Howard, 11/12/18	Season	7 vs. Howard, 11/12/18
Career	33 at St. Francis (Pa.), 12/2/17	Career	8 at Delaware, 2/9/18
REBOUNDS		STEALS	
Season	9 vs. Howard, 11/12/18	Season	5 vs. VCU, 11/6/18
Career	11 at Howard, 11/11/17	Career	7 vs. Charleston, 1/26/18
FIELD GOALS		BLOCKS	
Season	10 vs. Howard, 11/12/18	Season	1 vs. VCU, 11/6/18
Career	12 at St. Francis (Pa.), 12/2/17	Career	4 vs. Hofstra, 1/28/18
3-POINT FIELD GOALS		MISCELLANEOUS	
Season	2 at Loyola, 11/14/18	Career in Double Figures	45
Career	4 (2x) last time vs. NU, 2/11/18	2018-19 in Double Figures	3

>> 2018-19 GAME-BY-GAME

Opp	Date	GS	Min	FG-A	3FG-A	FT-A	Reb.	A	TO	BLK	STL	PTS
VCU	11/6	*	34	6-16	1-3	2-3	6	4	3	1	5	16
HOW	11/12	*	35	10-22	1-5	5-5	9	7	4	0	1	26
at Loy	11/17	*	35	5-9	2-4	2-2	5	3	1	0	0	14

>> BOGGS' CAREER STATISTICS

Season	GP	GS	Min/Avg	FG-FGA	Pct	3pt-Att	Pct	FT-FTA	Pct	Off	Def	Reb	Avg	PF	FO	A	TO	Blk	S	TP	Avg
2015-16	30	24	802/26.7	68-233	.292	17-56	.304	70-102	.686	38	57	95	3.2	81	5	45	55	10	56	223	7.4
2016-17	31	26	734/23.7	82-214	.383	22-74	.297	60-76	.789	44	65	109	3.5	60	0	60	76	17	54	246	7.9
2017-18	30	30	907/30.2	156-373	.418	41-129	.318	103-139	.741	46	91	137	4.6	85	1	88	111	24	65	456	15.2
2018-19	3	3	104/34.7	21-47	.447	4-12	.333	9-10	.900	3	17	20	6.7	5	0	14	8	1	6	55	18.3
CAREER	94	83	2547/27.1	327-867	.377	84-271	.310	242-327	.740	131	230	361	3.8	231	6	207	250	52	181	980	10.4



#3 ASHLEY TAYLOR

JUNIOR - GUARD

CHARLOTTESVILLE, VA. - ST. ANNE'S-BELFIELD

>> 2018-19 GAME-BY-GAME

Opp	Date	GS	Min	FG-A	3FG-A	FT-A	Reb.	A	TO	BLK	STL	Pts
VCU	11/6											
DNP - COACH'S DECISION												
HOW	11/12											
DNP - COACH'S DECISION												
at Loy	11/17	1	0-0	0-0	0-0	0	0	0	0	0	0	0

>> TAYLOR'S CAREER HIGHS

MINUTES			FREE THROWS		
Season	1	at Loyola, 11/14/18	Season	-	-
Career	9	vs. USC Upstate, 12/5/17	Career	-	-
POINTS			ASSISTS		
Season	-	-	Season	-	-
Career	3	vs. USC Upstate, 12/5/17	Career	1	(4x) last time at CofC, 12/29/17
REBOUNDS			STEALS		
Season	-	-	Season	-	-
Career	2	vs. Loyola, 11/25/17	Career	1	vs. Davidson, 11/27/17
FIELD GOALS			BLOCKS		
Season	-	-	Season	-	-
Career	1	(2x) last time at Elon, 3/1/18	Career	-	-
3-POINT FIELD GOALS			MISCELLANEOUS		
Season	-	-	Career in Double Figures	0	
Career	1	vs. USC Upstate, 12/5/17	2018-19 in Double Figures	0	

>> TAYLOR'S CAREER STATISTICS

Season	GP	GS	Min/Avg	FG-FGA	Pct	3pt-Att	Pct	FT-FTA	Pct	Off	Def	Reb	Avg	PF	FO	A	TO	Blk	S	TP	Avg
2016-17	7	0	22/3.1	0-6	.000	0-4	.000	0-0	.000	1	2	3	0.4	0	0	2	1	0	0	0	0.0
2017-18	13	0	32/2.5	2-9	.222	1-3	.333	0-0	.000	0	7	7	0.5	1	0	2	4	0	1	5	0.4
2018-19	1	0	1/1.0	0-0	.000	0-0	.000	0-0	.000	0	0	0	0.0	0	0	0	0	0	0	0	0.0
CAREER	21	0	55/2.6	2-15	.133	1-7	.000	0-0	.000	1	9	10	0.5	1	0	4	5	0	1	5	0.2



#5 MISHA JONES

SENIOR - GUARD/FORWARD

MANASSAS PARK, VA. - BATTLEFIELD

>> 2018-19 GAME-BY-GAME

Opp	Date	GS	Min	FG-A	3FG-A	FT-A	Reb.	A	TO	BLK	STL	Pts
VCU	11/6	4	1-1	1-1	1-2	4	0	0	0	0	4	
HOW	11/12	14	3-5	2-4	1-1	3	2	2	1	0	9	
at Loy	11/17	13	2-4	0-2	1-2	2	1	0	0	0	5	

>> JONES' CAREER HIGHS

MINUTES			FREE THROWS		
Season	14	vs. Howard, 11/12/18	Season	1	(2x) last time vs. HU, 11/12/18
Career	27	vs. Delaware, 2/23/18	Career	3	(2x) last time vs. USC Upstate, 12/5/17
POINTS			ASSISTS		
Season	9	vs. Howard, 11/12/18	Season	2	vs. Howard, 11/12/18
Career	9	vs. Howard, 11/12/18	Career	4	(2x) last time vs. UD, 2/23/18
REBOUNDS			STEALS		
Season	3	vs. Howard, 11/12/18	Season	-	-
Career	5	(2x) last time vs. UD, 2/23/18	Career	2	at Howard, 11/11/17
FIELD GOALS			BLOCKS		
Season	3	vs. Howard, 11/12/18	Season	1	vs. Howard, 11/12/18
Career	3	vs. Howard, 11/12/18	Career	1	(2x) last time vs. HU, 11/12/18
3-POINT FIELD GOALS			MISCELLANEOUS		
Season	2	vs. Howard, 11/12/18	Career in Double Figures	0	
Career	2	(3x) last time vs. HU, 11/12/18	2018-19 in Double Figures	0	

>> JONES' CAREER STATISTICS

Season	GP	GS	Min/Avg	FG-FGA	Pct	3pt-Att	Pct	FT-FTA	Pct	Off	Def	Reb	Avg	PF	FO	A	TO	Blk	S	TP	Avg
2015-16	27	0	180/6.7	12-36	.333	5-20	.250	7-10	.700	1	16	17	0.6	15	0	8	9	0	4	36	1.3
2016-17																					
DNP - INJURY																					
2017-18	28	0	201/7.2	13-41	.317	7-26	.269	10-11	.909	6	26	32	1.1	29	0	15	17	1	7	43	1.5
2018-19	3	0	32/10.7	6-10	.600	3-7	.429	3-5	.600	3	2	5	1.7	5	0	3	2	1	0	18	6.0
CAREER	58	0	413/7.1	31-87	.356	15-53	.283	20-25	.800	10	44	54	0.9	49	0	26	28	2	11	97	1.7



#10 EVA HODGSON

FRESHMAN - GUARD

RINDGE, N.H. - NEW HAMPTON SCHOOL

>> HODGSON'S CAREER HIGHS

MINUTES

Season	35	vs. Howard, 11/12/18
Career	35	vs. VCU, 11/6/18

POINTS

Season	8	vs. VCU, 11/6/18
Career	8	vs. VCU, 11/6/18

REBOUNDS

Season	5	vs. Howard, 11/12/18
Career	5	vs. Howard, 11/12/18

FIELD GOALS

Season	4	vs. VCU, 11/6/18
Career	4	vs. VCU, 11/6/18

3-POINT FIELD GOALS

Season	1	vs. Howard, 11/12/18
Career	1	vs. Howard, 11/12/18

FREE THROWS

Season	1 (2x) last time at Loyola 11/17/18
Career	1 (2x) last time at Loyola 11/14/18

ASSISTS

Season	5	at Loyola, 11/14/18
Career	5	at Loyola, 11/14/18

STEALS

Season	2	(2x) last time vs. HU, 11/12/18
Career	2	(2x) last time vs. HU, 11/12/18

BLOCKS

Season	1	at Loyola, 11/14/18
Career	1	at Loyola, 11/14/18

MISCELLANEOUS

Career in Double Figures	0
2018-19 in Double Figures	0

> 2018-19 GAME-BY-GAME

Opp	Date	GS	Min	FG-A	3FG-A	FT-A	Reb.	A	TO	BLK	STL	Pts
VCU	11/6	*	28	4-8	0-2	0-0	0	3	2	0	2	8
HOW	11/12	*	35	2-6	1-3	1-2	5	4	4	0	2	6
at Loy	11/17	*	30	2-7	0-1	1-1	2	5	2	1	1	5

>> HODGSON'S CAREER STATISTICS

Season	GP	GS	Min/Avg	FG-FGA	Pct	3pt-Att	Pct	FT-FTA	Pct	Off	Def	Reb	Avg	PF	FO	A	TO	Blk	S	TP	Avg
2018-19	3	3	93/31.0	8-21	.381	1-6	.167	2-3	.667	2	5	7	2.3	9	0	12	8	1	5	19	6.3
CAREER	3	3	93/31.0	8-21	.381	1-6	.167	2-3	.667	2	5	7	2.3	9	0	12	8	1	5	19	6.3



#11 NYLA POLLARD

SOPHOMORE - GUARD

VIRGINIA BEACH, VA. - PRINCESS ANNE

>> POLLARD'S CAREER HIGHS

MINUTES

Season	34	vs. Howard, 11/12/18
Career	35	vs. Norfolk State, 12/21/17

POINTS

Season	9	at Loyola, 11/14/18
Career	14	vs. USC Upstate, 12/5/17

REBOUNDS

Season	3	vs. Howard, 11/12/18
Career	6	vs. Norfolk State, 12/21/17

FIELD GOALS

Season	4	at Loyola, 11/14/18
Career	6	vs. USC Upstate, 12/5/17

3-POINT FIELD GOALS

Season	2	vs. Howard, 11/12/18
Career	2	(5x) last time vs. HU, 11/12/18

FREE THROWS

Season	-
Career	4 (2x) last time at UofR, 11/29/17

ASSISTS

Season	4	at Loyola, 11/14/18
Career	5 (2x) last time vs. ODU, 12/17/17	

STEALS

Season	2	vs. Howard, 11/12/18
Career	4	vs. Davidson, 11/27/17

BLOCKS

Season	-
Career	1 (4x) last time vs. UD, 2/23/18

MISCELLANEOUS

Career in Double Figures	3
2018-19 in Double Figures	0

>> 2018-19 GAME-BY-GAME

Opp	Date	GS	Min	FG-A	3FG-A	FT-A	Reb.	A	TO	BLK	STL	Pts
VCU	11/6	19	2-4	1-1	0-1	1	0	0	0	1	5	
HOW	11/12	34	3-7	2-3	0-0	3	2	2	0	2	8	
at Loy	11/17	23	4-6	1-2	0-0	2	4	1	0	1	9	

>> POLLARD'S CAREER STATISTICS

Season	GP	GS	Min/Avg	FG-FGA	Pct	3pt-Att	Pct	FT-FTA	Pct	Off	Def	Reb	Avg	PF	FO	A	TO	Blk	S	TP	Avg
2017-18	30	27	658/21.9	44-121	.364	14-48	.292	20-27	.741	22	31	53	1.8	71	3	46	40	4	15	122	4.1
2018-19	3	0	77/25.7	9-17	.529	4-6	.667	0-1	.000	2	4	6	2.0	11	0	7	3	0	4	22	7.3
CAREER	33	27	735/22.3	53-138	.384	18-54	.333	20-28	.714	24	35	59	1.8	82	3	53	43	4	19	144	4.4



#12 HARPER BIRDSONG

SOPHOMORE - GUARD

SUFFOLK, VA. - NANSEMOND SUFFOLK
(George Washington)

>> BIRDSONG'S CAREER HIGHS

MINUTES

Season	16	vs. Howard, 11/12/18
Career	16	vs. Howard, 11/12/18

POINTS

Season	12	vs. Howard, 11/12/18
Career	12	vs. Howard, 11/12/18

REBOUNDS

Season	2	vs. Howard, 11/12/18
Career	2	vs. Howard, 11/12/18

FIELD GOALS

Season	5	vs. Howard, 11/12/18
Career	5	vs. Howard, 11/12/18

3-POINT FIELD GOALS

Season	3	at Loyola, 11/14/18
Career	3	at Loyola, 11/14/18

FREE THROWS

Season	1	vs. Howard, 11/12/18
Career	1	(2x) last time vs. HU, 11/12/18

ASSISTS

Season	1	vs. Howard, 11/12/18
Career	1	(3x) last time vs. HU, 11/12/18

STEALS

Season	1	(2x) last time vs. HU, 11/12/18
Career	1	(2x) last time vs. HU, 11/12/18

BLOCKS

Season	1	vs. Howard, 11/12/18
Career	1	(2x) last time vs. HU, 11/12/18

MISCELLANEOUS

Career in Double Figures	1
2018-19 in Double Figures	1

>> BIRDSONG'S CAREER STATISTICS

Season	GP	GS	Min/Avg	FG-FGA	Pct	3pt-Att	Pct	FT-FTA	Pct	Off	Def	Reb	Avg	PF	FO	A	TO	Blk	S	TP	Avg
2016-17	8	0	39/4.9	4-13	.308	2-8	.250	1-1	1.000	0	2	2	0.3	2	0	2	1	0	1	11	1.4
2017-18																					
2018-19	3	3	42/14.0	8-17	.471	4-9	.444	1-4	.250	1	1	2	0.7	7	0	1	7	1	2	21	7.0
CAREER	11	3	81/7.4	12-30	.400	6-17	.353	2-5	.400	1	3	4	0.4	9	0	3	8	1	3	32	2.9

>> 2018-19 GAME-BY-GAME

Opp	Date	GS	Min	FG-A	3FG-A	FT-A	Reb.	A	TO	BLK	STL	PTS
VCU	11/6	*	12	0-4	0-2	0-0	0	0	4	0	0	0
HOW	11/12	*	16	5-10	1-4	1-2	2	1	1	1	1	12
at Loy	11/17	*	14	3-3	3-3	0-2	0	0	2	0	0	9



#15 EMMA KRAUSE

FRESHMAN - FORWARD

PLANTATION, FLA. - CARDINAL GIBBONS

>> KRAUSE'S CAREER HIGHS

MINUTES

Season	18	at Loyola, 11/14/18
Career	18	at Loyola, 11/14/18

POINTS

Season	14	vs. Howard, 11/12/18
Career	14	vs. Howard, 11/12/18

REBOUNDS

Season	5	at Loyola, 11/14/18
Career	5	at Loyola, 11/14/18

FIELD GOALS

Season	5	vs. Howard, 11/12/18
Career	5	vs. Howard, 11/12/18

3-POINT FIELD GOALS

Season	4	vs. Howard, 11/12/18
Career	4	vs. Howard, 11/12/18

FREE THROWS

Season	1	vs. VCU, 11/6/18
Career	1	vs. VCU, 11/6/18

ASSISTS

Season	3	at Loyola, 11/14/18
Career	3	at Loyola, 11/14/18

STEALS

Season	2	at Loyola, 11/14/18
Career	2	at Loyola, 11/14/18

BLOCKS

Season	2	vs. Howard, 11/12/18
Career	2	vs. Howard, 11/12/18

MISCELLANEOUS

Career in Double Figures	1
2018-19 in Double Figures	1

>> KRAUSE'S CAREER STATISTICS

Season	GP	GS	Min/Avg	FG-FGA	Pct	3pt-Att	Pct	FT-FTA	Pct	Off	Def	Reb	Avg	PF	FO	A	TO	Blk	S	TP	Avg
2018-19	3	0	46/15.3	8-16	.500	6-12	.500	1-4	.250	5	6	11	3.7	7	0	4	1	3	2	23	7.7
CAREER	3	0	46/15.3	8-16	.500	6-12	.500	1-4	.250	5	6	11	3.7	7	0	4	1	3	2	23	7.7

>> 2018-19 GAME-BY-GAME

Opp	Date	GS	Min	FG-A	3FG-A	FT-A	Reb.	A	TO	BLK	STL	PTS
VCU	11/6		16	1-5	1-4	1-2	4	1	0	1	0	4
HOW	11/12		13	5-9	4-7	0-2	2	0	0	2	0	14
at Loy	11/17		18	2-2	1-1	0-0	5	3	1	0	2	5



#20 CHANDLER SMITH

SENIOR - CENTER

PORT TOBACCO, MD. - ST. MARY'S RYKEN

>> SMITH'S CAREER HIGHS

MINUTES

Season	8	vs. VCU, 11/6/18
Career	18	at Delaware, 1/26/16

POINTS

Season	1	vs. Howard, 11/12/18
Career	4	(4x) last time at SFU 12/2/17

REBOUNDS

Season	2	(2x) last time vs. HU, 11/12/18
Career	5	vs. Hofstra, 2/7/17

FIELD GOALS

Season	-	-
Career	2	(3x) last time at SFU, 12/2/17

3-POINT FIELD GOALS

Season	-	-
Career	-	-

FREE THROWS

Season	1	vs. Howard, 11/12/18
Career	4	vs. Hofstra, 2/7/17

ASSISTS

Season	-	-
Career	1	(2x) last time at Towson, 2/4/18

STEALS

Season	-	-
Career	2	(2x) last time vs. Mount St. Mary's, 12/18/16

BLOCKS

Season	1	(2x) last time at Loyola, 11/17/18
Career	3	vs. Mount St. Mary's, 12/18/16

MISCELLANEOUS

Career in Double Figures	0
2017-18 in Double Figures	0

>> SMITH'S CAREER STATISTICS

Season	GP	GS	Min/Avg	FG-FGA	Pct	3pt-Att	Pct	FT-FTA	Pct	Off	Def	Reb	Avg	PF	FO	A	TO	Blk	S	TP	Avg
2015-16	19	0	97/5.1	3-12	.250	0-0	.000	0-6	.000	2	10	12	0.6	13	0	0	5	4	3	6	0.3
2016-17	13	0	77/5.9	6-21	.286	0-0	.000	7-8	.875	2	22	24	1.8	16	1	1	7	11	3	19	1.5
2017-18	21	0	86/4.1	5-17	.294	0-0	.000	0-0	.000	4	8	12	0.6	15	0	3	8	9	1	10	0.5
2018-19	3	0	16/5.3	0-1	.000	0-0	.000	1-2	.500	1	3	4	2.0	3	0	0	1	2	0	1	0.3
CAREER	56	0	276/4.9	14-51	.275	0-0	.000	8-16	.500	9	43	52	0.9	47	1	4	21	26	7	36	0.6

>> 2018-19 GAME-BY-GAME

Opp	Date	GS	Min	FG-A	3FG-A	FT-A	Reb.	A	TO	BLK	STL	PTS
VCU	11/6	11	0-2	0-1	1-2	1	0	1	0	0	1	0
HOW	11/12	1	0-0	0-0	0-0	0	0	1	0	0	0	0
at Loy	11/17	1	0-0	0-0	0-0	0	0	0	0	0	0	0



#21 BAILEY EICHNER

SOPHOMORE - GUARD/FORWARD

CUDAHY, WISC. - CUDAHY

>> EICHNER'S CAREER HIGHS

MINUTES

Season	11	vs. VCU, 11/6/18
Career	11	vs. VCU, 11/6/18

POINTS

Season	1	vs. VCU, 11/6/18
Career	4	vs. James Madison, 2/2/18

REBOUNDS

Season	1	vs. VCU, 11/6/18
Career	5	vs. James Madison, 2/2/18

FIELD GOALS

Season	-	-
Career	1	(2x) last time vs. JMU, 2/2/18

3-POINT FIELD GOALS

Season	-	-
Career	-	-

FREE THROWS

Season	1	vs. VCU, 11/6/18
Career	2	vs. James Madison, 2/2/18

ASSISTS

Season	-	-
Career	2	at Hofstra, 1/19/18

STEALS

Season	-	-
Career	1	at Hofstra, 1/19/18

BLOCKS

Season	-	-
Career	1	at Hofstra, 1/19/18

MISCELLANEOUS

Career in Double Figures	0
2017-18 in Double Figures	0

>> EICHNER'S CAREER STATISTICS

Season	GP	GS	Min/Avg	FG-FGA	Pct	3pt-Att	Pct	FT-FTA	Pct	Off	Def	Reb	Avg	PF	FO	A	TO	Blk	S	TP	Avg
2017-18	16	0	46/2.9	2-6	.333	0-2	.000	4-8	.500	6	9	15	0.9	14	0	2	7	2	1	8	0.5
2018-19	3	0	13/4.3	0-2	.000	0-1	.000	1-2	.500	1	0	1	0.3	2	0	0	2	0	0	1	0.3
CAREER	19	0	59/3.1	2-8	.250	0-3	.000	5-10	.500	7	9	16	0.8	16	0	2	9	2	1	9	0.5



#25 GABBY ROGERS

SOPHOMORE - CENTER

DALLAS, TEXAS - BISHOP LYNCH

>> ROGERS' CAREER HIGHS

MINUTES

Season 19 vs. Howard, 11/12/18
Career 19 (3x) last time vs. HU, 11/12/18

POINTS

Season 8 at Loyola, 11/14/18
Career 9 at Howard, 11/11/17

REBOUNDS

Season 3 vs. Howard, 11/12/18
Career 5 at Elon, 3/1/18

FIELD GOALS

Season 4 at Loyola, 11/14/18
Career 4 (2x) last time at Loyola 11/14/18

3-POINT FIELD GOALS

Season -
Career -

FREE THROWS

Season 2 vs. VCU, 11/6/18
Career 2 (4x) last time vs. VCU, 11/6/18

ASSISTS

Season 1 at Loyola, 11/14/18
Career 1 (7x) last time at Loyola 11/14/18

STEALS

Season -
Career 3 vs. Elon, 1/14/18

BLOCKS

Season 1 vs. Howard, 11/12/18
Career 2 (2x) last time at Towson, 2/4/18

MISCELLANEOUS

Career in Double Figures 0
2018-19 in Double Figures 0

>> 2018-19 GAME-BY-GAME

Opp	Date	GS	Min	FG-A	3FG-A	FT-A	Reb.	A	TO	BLK	STL	Pts
VCU	11/6	*	18	1-2	0-0	2-2	1	0	2	0	0	4
HOW	11/12	*	19	1-2	0-0	0-0	3	0	2	1	0	2
at Loy	11/17	*	16	4-6	0-0	0-0	2	1	0	0	0	8

>> ROGERS' CAREER STATISTICS

Season	GP	GS	Min/Avg	FG-FGA	Pct	3pt-Att	Pct	FT-FTA	Pct	Off	Def	Reb	Avg	PF	FO	A	TO	Blk	S	TP	Avg
2017-18	29	0	263/9.1	24-47	.511	0-0	.000	9-13	.692	12	40	52	1.8	55	1	7	15	6	10	57	2.0
2018-19	3	3	53/17.7	6-10	.600	0-0	.000	2-2	1.000	3	3	6	2.0	10	0	1	4	1	0	14	4.7
CAREER	32	3	316/9.9	30-57	.526	0-0	.000	11-15	.733	15	43	58	1.8	65	1	8	19	7	10	71	2.2



#30 VICTORIA REYNOLDS

JUNIOR - FORWARD

FAIRFAX, VA./ARCHBISCHOP SPALDING

>> REYNOLDS' CAREER HIGHS

MINUTES

Season 37 vs. VCU, 11/6/18
Career 40 (2x) last time vs. UNCW, 2/16/18

POINTS

Season 10 (2x) last time at Loy, 11/14/18
Career 22 at St. Francis (Pa.), 12/2/17

REBOUNDS

Season 8 vs. Howard, 11/12/18
Career 18 vs. Charleston, 1/26/18

FIELD GOALS

Season 4 (2x) last time at Loyola, 11/14/18
Career 9 vs. Northeastern, 2/11/18

3-POINT FIELD GOALS

Season -
Career 2 (2x) last time at UofR, 11/29/17

FREE THROWS

Season 4 vs. Howard, 11/12/18
Career 9 vs. Old Dominion, 12/17/17

ASSISTS

Season 5 vs. VCU, 11/6/18
Career 8 at East Carolina, 11/21/17

STEALS

Season 2 vs. Howard, 11/12/18
Career 7 vs. Hofstra, 1/28/18

BLOCKS

Season -
Career 3 (2x) last time vs. NU, 2/11/18

MISCELLANEOUS

Career in Double Figures 21
2018-19 in Double Figures 2

>> 2018-19 GAME-BY-GAME

Opp	Date	GS	Min	FG-A	3FG-A	FT-A	Reb.	A	TO	BLK	STL	Pts
VCU	11/6	*	37	4-7	0-0	0-0	4	5	2	0	0	8
HOW	11/12	*	26	3-10	0-2	4-6	5	3	1	0	2	10
at Loy	11/17	*	33	4-10	0-0	2-2	5	2	7	0	0	10

>> REYNOLDS' CAREER STATISTICS

Season	GP	GS	Min/Avg	FG-FGA	Pct	3pt-Att	Pct	FT-FTA	Pct	Off	Def	Reb	Avg	PF	FO	A	TO	Blk	S	TP	Avg
2016-17	28	0	466/16.6	51-104	.490	5-12	.417	36-46	.783	44	45	89	3.2	42	0	21	30	5	33	143	5.1
2017-18	30	30	977/32.6	125-270	.463	8-34	.235	50-68	.735	65	147	212	7.1	77	1	60	69	22	71	308	10.3
2018-19	3	3	96/32.0	11-27	.407	0-3	.000	6-8	.750	3	15	18	6.0	6	0	10	10	0	2	28	9.3
CAREER	61	33	1539/25.2	187-401	.466	13-49	.265	92-122	.754	112	207	319	5.2	125	1	91	108	27	106	479	7.9



#32 CAROLINE STOVER

FRESHMAN - CENTER

PLYMTON, MASS. - CARDINAL SPELLMAN

>> 2018-19 GAME-BY-GAME

Opp	Date	GS	Min	FG-A	3FG-A	FT-A	Reb.	A	TO	BLK	STL	Pts
VCU	11/6			DNP								
HOW	11/12			DNP								
at Loy	11/17	1	0-2	0-0	0-0	0	0	0	0	0	0	0

>> STOVER'S CAREER STATISTICS

MINUTES			FREE THROWS		
Season	1	at Loyola, 11/14/18	Season	-	-
Career	1	at Loyola, 11/14/18	Career	-	-
POINTS			ASSISTS		
Season	-	-	Season	-	-
Career	-	-	Career	-	-
REBOUNDS			STEALS		
Season	-	-	Season	-	-
Career	-	-	Career	-	-
FIELD GOALS			BLOCKS		
Season	-	-	Season	-	-
Career	-	-	Career	-	-
3-POINT FIELD GOALS			MISCELLANEOUS		
Season	-	-	Career in Double Figures		0
Career	-	-	2018-19 in Double Figures		0

>> STOVER'S CAREER STATISTICS

Season	GP	GS	Min/Avg	FG-FGA	Pct	3pt-Att	Pct	FT-FTA	Pct	Off	Def	Reb	Avg	PF	FO	A	TO	Blk	S	TP	Avg
2018-19	1	0	1/1.0	0-2	.000	0-0	.000	0-0	.000	0	0	0	0.0	0	0	0	0	0	0	0	0.0
CAREER	1	0	1/1.0	0-2	.000	0-0	.000	0-0	.000	0	0	0	0.0	0	0	0	0	0	0	0	0.0



2018-19 Tribe Women's Basketball



W&M Women's Basketball
William & Mary Season Schedule/Results & Leaders (as of Nov 19, 2018)
All games

RECORD:	OVERALL	HOME	AWAY	NEUTRAL
ALL GAMES	2-1	1-1	1-0	0-0
CONFERENCE	0-0	0-0	0-0	0-0
NON-CONFERENCE	2-1	1-1	1-0	0-0

Date	Opponent	Score	Att. High Points	High Rebounds
11/06/18	VCU	55-72 L	684 (15)Boggs, Bianca	(6)Boggs, Bianca
11/12/18	HOWARD	w 88-75	564 (26)Boggs, Bianca	(9)Boggs, Bianca
11/17/18	at Loyola	w 65-49	352 (14)Boggs, Bianca	(6)Reynolds, Victoria

* - Conference game

Attendance Summary	Games	Attend	Avg/Game
Home	2	1248	624
Away	1	352	352
Neutral	0	0	0
Total	3	1600	533



W&M Women's Basketball
William & Mary Combined Team Statistics (as of Nov 19, 2018)
All games

RECORD:	OVERALL	HOME	AWAY	NEUTRAL
ALL GAMES	2-1	1-1	1-0	0-0
CONFERENCE	0-0	0-0	0-0	0-0
NON-CONFERENCE	2-1	1-1	1-0	0-0

#	Player	gp-gs	min	avg	Total		3-Point		F-Throw		Rebounds				pf	dq	a	to	blk	stl	pts	avg
					fg-fga	fg%	3fg-fga	3fg%	ft-fa	ft%	off	def	tot	avg								
02	Boggs, Bianca	3-3	104	34.7	21-47	.447	4-12	.333	9-10	.900	3	17	20	6.7	5	0	14	8	1	6	55	18.3
30	Reynolds, Victoria	3-3	96	32.0	11-27	.407	0-3	.000	6-8	.750	3	15	18	6.0	6	0	10	10	0	2	28	9.3
15	Krause, Emma	3-0	46	15.3	8-16	.500	6-12	.500	1-4	.250	5	6	11	3.7	7	0	4	1	3	2	23	7.7
11	Pollard, Nyla	3-0	77	25.7	9-17	.529	4-6	.667	0-1	.000	2	4	6	2.0	11	0	7	3	0	4	22	7.3
12	Birdsong, Harper	3-3	42	14.0	8-17	.471	4-9	.444	1-4	.250	1	1	2	0.7	7	0	1	7	1	2	21	7.0
10	Hodgson, Eva	3-3	93	31.0	8-21	.381	1-6	.167	2-4	.500	2	5	7	2.3	9	0	12	8	1	5	19	6.3
05	Jones, Misha	3-0	32	10.7	6-10	.600	3-7	.429	3-4	.750	3	2	5	1.7	5	0	3	2	1	0	18	6.0
25	Rogers, Gabby	3-3	53	17.7	6-10	.600	0-0	.000	2-2	1.000	3	3	6	2.0	10	0	1	4	1	0	14	4.7
00	Underwood, Libby	3-0	26	8.7	3-6	.500	0-1	.000	0-0	.000	1	0	1	0.3	0	0	1	1	1	0	6	2.0
21	Eichner, Bailey	3-0	13	4.3	0-2	.000	0-1	.000	1-2	.500	1	0	1	0.3	2	0	0	2	0	0	1	0.3
20	Smith, Chandler	3-0	16	5.3	0-1	.000	0-0	.000	1-2	.500	1	3	4	1.3	3	0	0	1	2	0	1	0.3
03	Taylor, Ashley	1-0	1	1.0	0-0	.000	0-0	.000	0-0	.000	0	0	0	0.0	0	0	0	0	0	0	0	0.0
32	Stover, Caroline	1-0	1	1.0	0-2	.000	0-0	.000	0-0	.000	0	0	0	0.0	0	0	0	0	0	0	0	0.0
Team											4	9	13									
Total.....		3	600		80-176	.455	22-57	.386	26-41	.634	29	65	94	31.3	65	0	53	47	11	21	208	69.3
Opponents.....		3	599		66-147	.449	15-40	.375	49-71	.690	25	72	97	32.3	52	0	41	57	15	26	196	65.3

TEAM STATISTICS	WM	OPP
SCORING	208	196
Points per game	69.3	65.3
Scoring margin	+4.0	-
FIELD GOALS-ATT	80-176	66-147
Field goal pct	.455	.449
3 POINT FG-ATT	22-57	15-40
3-point FG pct	.386	.375
3-pt FG made per game	7.3	5.0
FREE THROWS-ATT	26-41	49-71
Free throw pct	.634	.690
F-Throws made per game	8.7	16.3
REBOUNDS	94	97
Rebounds per game	31.3	32.3
Rebounding margin	-1.0	-
ASSISTS	53	41
Assists per game	17.7	13.7
TURNOVERS	47	57
Turnovers per game	15.7	19.0
Turnover margin	+3.3	-
Assist/turnover ratio	1.1	0.7
STEALS	21	26
Steals per game	7.0	8.7
BLOCKS	11	15
Blocks per game	3.7	5.0
ATTENDANCE	1248	352
Home games-Avg/Game	2-624	1-352
Neutral site-Avg/Game	-	0-0

Date	Opponent		Score	Att.
11/06/18	VCU	L	55-72	684
11/12/18	HOWARD	W	88-75	564
11/17/18	at Loyola	W	65-49	352












* - Conference game

Score by Periods	1st	2nd	3rd	4th	Totals
William & Mary	55	56	51	46	208
Opponents	49	49	50	48	196

WILLIAM & MARY RADIO AND TV CHART

NOTES: W&M looks to make it three in a row as it closes its two-game road trip at Davidson on Saturday evening ... The Tribe was selected to finish sixth in the CAA by a vote of league head coaches. Senior Bianca Boggs leads the Tribe averaging 18.3 points, and 6.7 rebounds. Although Boggs is the only Tribe player averaging double-figures, junior Victoria Reynolds is just off of the pace with 9.3 points per game.

RECORD	2018-19	LAST YR	STATS	W&M	OPP	DC	OPP	W&M'S LAST THREE GAMES		
OVERALL	2-1	16-14	FG%	.455	.449	.377	.328	Nov. 6	VCU	L, 55-72
CAA	0-0	7-11	FT%	.634	.690	.734	.619	Boggs 15 pts, 6 reb, Hodgson 8 pts, Reynolds 8 pts		
HOME	1-1	11-5	3PT%	.386	.375	.305	.228	Nov. 12	HOWARD	W, 88-75
AWAY/NEUTRAL	1-0/0-0	8-5/0-1	POINTS	69.3	65.3	67.0	57.0	Boggs 26 pts, 9 reb Krause 14 pts, Birdsong 12 pts		
			REBOUNDS	31.3	32.3	44.0	43.4	Nov. 17	at Loyola	W, 65-49
			TURNOVERS	15.7	19.0	18.0	19.6	Boggs 14 pts, Reynolds 10 pts, Birdsong 9 pts		

	0 LIBBY UNDERWOOD, G SO./5-9/RYE, N.H./PORTSMOUTH	<table><tr><td>PPG</td><td>2.0</td><td>FG%</td><td>.500</td></tr><tr><td>RPG</td><td>0.3</td><td>FT%</td><td>-</td></tr><tr><td>APG</td><td>0.3</td><td>3PT%</td><td>.000</td></tr></table>	PPG	2.0	FG%	.500	RPG	0.3	FT%	-	APG	0.3	3PT%	.000	<ul style="list-style-type: none">Looking to expand her role during her second season with the Green and Gold.Had six points and added a block and assist against VCU (11/6).Scored a career-high 8 points and added out 3 assists against USC Upstate (12/5/17).Added four points in a rebound against Drexel (1/9/18).Grabbed a rebound in the CAA Quarterfinal against Elon (3/8/18).	POINTS 8 vs. USC Upstate (12/5/17) REBOUNDS 3 vs. Northeastern (1/21/18) ASSISTS 3 vs. USC Upstate (12/5/17) LAST GAME: PLAYED 11 MINUTES
PPG	2.0	FG%	.500													
RPG	0.3	FT%	-													
APG	0.3	3PT%	.000													
	1 SYDNEY WAGNER, G SO./5-6/PHOENIXVILLE, PA./SPRING FORD SENIOR HIGH (STETSON)	<table><tr><td>PPG</td><td>-</td><td>FG%</td><td>-</td></tr><tr><td>RPG</td><td>-</td><td>FT%</td><td>-</td></tr><tr><td>SPG</td><td>-</td><td>3PT%</td><td>-</td></tr></table>	PPG	-	FG%	-	RPG	-	FT%	-	SPG	-	3PT%	-	<ul style="list-style-type: none">Transfer from Stetson that has to sit out the 18-19 season due to NCAA Transfer rule.Appeared in 32 games with nine starters for the Hatters last season.Scored a career-high 20 points against Florida.Dropped 18 points against on 5-of-8 from 3-point range against Webber International.Averaged 6.0 ppg and knocked down 42 triples during her freshman season at Stetson.	POINTS 20 vs. Florida (11/22/17) REBOUNDS 5 vs. Lipscomb (2/19/18) ASSISTS 3 vs. Lipscomb (2/19/18) LAST GAME: DNP - TRANSFER RULE
PPG	-	FG%	-													
RPG	-	FT%	-													
SPG	-	3PT%	-													
	2 BIANCA BOGGS, G SR./5-8/WALDORF, MD./ST. MARY'S RYKEN	<table><tr><td>PPG</td><td>18.3</td><td>FG%</td><td>.447</td></tr><tr><td>RPG</td><td>6.7</td><td>FT%</td><td>.900 (9-10)</td></tr><tr><td>APG</td><td>4.7</td><td>3PT%</td><td>.333</td></tr></table>	PPG	18.3	FG%	.447	RPG	6.7	FT%	.900 (9-10)	APG	4.7	3PT%	.333	<ul style="list-style-type: none">Named team captain for the 2018-19 season.Earned Preseason All-CAA honors after becoming the first Tribe player to be named First-Team All-CAA in a decade.Scored a career-high 33 points in a win at St. Francis (12/2/17).Just 20 points away from becoming the 20th player in school history to score 1000 pts.	POINTS 33 vs. St. Francis (Pa.) (12/2/17) REBOUNDS 11 at Howard (11/11/17) ASSISTS 8 at Delaware (2/9/18) LAST GAME: 14 PTS, 5 REB, 3 AST
PPG	18.3	FG%	.447													
RPG	6.7	FT%	.900 (9-10)													
APG	4.7	3PT%	.333													
	3 ASHLEY TAYLOR, G JR./6-0/CHARLOTTESVILLE, VA./ST. ANNE'S BELLEFIELD	<table><tr><td>PPG</td><td>-</td><td>FG%</td><td>-</td></tr><tr><td>RPG</td><td>-</td><td>FT%</td><td>-</td></tr><tr><td>APG</td><td>-</td><td>3PT%</td><td>-</td></tr></table>	PPG	-	FG%	-	RPG	-	FT%	-	APG	-	3PT%	-	<ul style="list-style-type: none">Has seen action in 21 games during her career with the Tribe.Made her first career basket, a 3-pointer, in the win against USC Upstate (12/5/17).Grabbed a pair of rebounds and added an assist against Loyola (11/25/17).Hit a basket and grabbed a board at Elon (3/1/18)	POINTS 3 vs. USC Upstate (12/5/17) REBOUNDS 2 vs. Loyola (11/25/17) ASSISTS 1 (4x) last time at Charleston (12/29/17) LAST GAME: PLAYED 1 MINUTE
PPG	-	FG%	-													
RPG	-	FT%	-													
APG	-	3PT%	-													
	5 MISHA JONES, G/F SR./5-9/MANASSAS PARK, VA./BATTLEFIELD	<table><tr><td>PPG</td><td>6.0</td><td>FG%</td><td>.600</td></tr><tr><td>RPG</td><td>1.7</td><td>FT%</td><td>.600 (3-5)</td></tr><tr><td>APG</td><td>1.0</td><td>3PT%</td><td>.429</td></tr></table>	PPG	6.0	FG%	.600	RPG	1.7	FT%	.600 (3-5)	APG	1.0	3PT%	.429	<ul style="list-style-type: none">Named a team captain for the second straight season this year.Scored a career-high nine points, including seven straight points in the win vs. Howard.Matched a career-high with seven points against USC Upstate (12/5/17).One of the Tribe's best free throw shooters, finishing last year at 90.9-percent.Played a career-high 27 minutes with five points and five rebounds vs. UD (2/23/18).	POINTS 9 vs. Howard (11/12/18) REBOUNDS 5 (2x) vs. Delaware (2/23/18) ASSISTS 4 (2x) vs. Delaware (2/23/18) LAST GAME: 5 PTS, 2 REB, 1 AST
PPG	6.0	FG%	.600													
RPG	1.7	FT%	.600 (3-5)													
APG	1.0	3PT%	.429													
	10 EVA HODGSON, G FR./5-9/RINDGE, N.H./NEW HAMPTON SCHOOL	<table><tr><td>PPG</td><td>6.3</td><td>FG%</td><td>.381</td></tr><tr><td>RPG</td><td>2.3</td><td>FT%</td><td>.667 (2-3)</td></tr><tr><td>APG</td><td>4.0</td><td>3PT%</td><td>.167</td></tr></table>	PPG	6.3	FG%	.381	RPG	2.3	FT%	.667 (2-3)	APG	4.0	3PT%	.167	<ul style="list-style-type: none">Made her first career start and scored eight points with three assists against VCU (11/6).Grabbed five rebounds in the win against Howard (11/12).Handed out a career-high five dimes in the win at Loyola (11/17).Helped her high school to a 2015 State Championship.Her parents and two brothers all played Division III basketball.	POINTS 8 vs. VCU (11/6/18) REBOUNDS 5 vs. Howard (11/12/18) ASSISTS 5 at Loyola (11/17/18) LAST GAME: 5 PTS, 2 REB, 5 AST, 1 BLK
PPG	6.3	FG%	.381													
RPG	2.3	FT%	.667 (2-3)													
APG	4.0	3PT%	.167													
	11 NYLA POLLARD, G SO./5-9/VIRGINIA BEACH, VA./PRINCESS ANNE	<table><tr><td>PPG</td><td>7.3</td><td>FG%</td><td>.529</td></tr><tr><td>RPG</td><td>2.0</td><td>FT%</td><td>.000 (0-1)</td></tr><tr><td>APG</td><td>2.3</td><td>3PT%</td><td>.667</td></tr></table>	PPG	7.3	FG%	.529	RPG	2.0	FT%	.000 (0-1)	APG	2.3	3PT%	.667	<ul style="list-style-type: none">Should be a major contributor after being named to the CAA All-Rookie team last year.Had nine points and added two rebounds, four assists, and a steal at Loyola (11/17/18).Tabbed back-to-back CAA Rookie of the Week for the week of Dec. 11 and Dec. 18.Scored a career-high 14 points, four assists, three rebounds against Upstate (12/5/17).Netted 12 points and had five assists in the win versus Old Dominion (12/17/17).	POINTS 14 vs. USC Upstate (12/5/17) REBOUNDS 6 vs. Norfolk State (12/21/17) ASSISTS 5 (2x) last time vs. ODU (12/17/17) LAST GAME: 9 PTS, 2 REB, 4 AST
PPG	7.3	FG%	.529													
RPG	2.0	FT%	.000 (0-1)													
APG	2.3	3PT%	.667													
	12 HARPER BIRDSONG, G R-SO./5-10/SUFFOLK, VA./NANSEMOND SUFFOLK (GW)	<table><tr><td>PPG</td><td>7.0</td><td>FG%</td><td>.471</td></tr><tr><td>RPG</td><td>0.7</td><td>FT%</td><td>.250 (1-4)</td></tr><tr><td>APG</td><td>0.3</td><td>3PT%</td><td>.444</td></tr></table>	PPG	7.0	FG%	.471	RPG	0.7	FT%	.250 (1-4)	APG	0.3	3PT%	.444	<ul style="list-style-type: none">Makes her Tribe debut after sitting out all of last year because of NCAA Transfer rules.Sharp-shooter that should be one of the Tribe's best 3-point threats this season.Had a career-high 12 points in the win against Howard (11/12/18).Appeared in nine games during her freshman season at George Washington.Scored a then career-high nine points in a win at Rhode Island (2/8/17).	POINTS 12 vs. Howard (11/12/18) REBOUNDS 2 vs. Howard (11/12/18) ASSISTS 1 (2x) last time vs. Mason (2/18/17) LAST GAME: 9 PTS IN 14 MINUTES
PPG	7.0	FG%	.471													
RPG	0.7	FT%	.250 (1-4)													
APG	0.3	3PT%	.444													
	15 EMMA KRAUSE, F FR./6-2/PLANTATION, FLA./CARDINAL GIBBONS	<table><tr><td>PPG</td><td>7.7</td><td>FG%</td><td>.500</td></tr><tr><td>RPG</td><td>3.7</td><td>FT%</td><td>.250 (1-4)</td></tr><tr><td>BPG</td><td>1.0</td><td>3PT%</td><td>.500</td></tr></table>	PPG	7.7	FG%	.500	RPG	3.7	FT%	.250 (1-4)	BPG	1.0	3PT%	.500	<ul style="list-style-type: none">Freshman, stretch four that can step out and knock down the three-ball.Netted a career-high 14 points on four 3-pointers against Howard (11/12/18).Tabbed to the Sun-Sentinel First-Team All-Broward County following her junior season.Earned Miami Herald First-Team All-Miami Dade County after her junior year.Helped her high school to the 5A Florida State Semifinals in 2016-17.	POINTS 14 vs. Howard (11/12/18) REBOUNDS 4 vs. VCU (11/6/18) ASSISTS 1 vs. VCU (11/6/18) LAST GAME: 5 PTS, 2 REB, 1 AST
PPG	7.7	FG%	.500													
RPG	3.7	FT%	.250 (1-4)													
BPG	1.0	3PT%	.500													
	20 CHANDLER SMITH, C SR./6-3/PORT TOBACCO, MD./ST. MARY'S-RYKEN	<table><tr><td>PPG</td><td>0.3</td><td>FG%</td><td>.000</td></tr><tr><td>RPG</td><td>1.3</td><td>FT%</td><td>.500 (1-2)</td></tr><tr><td>BPG</td><td>0.7</td><td>3PT%</td><td>-</td></tr></table>	PPG	0.3	FG%	.000	RPG	1.3	FT%	.500 (1-2)	BPG	0.7	3PT%	-	<ul style="list-style-type: none">Named a team captain for her senior season.Key reserve in the post that has appeared in 55 career games.Tied a career-high with four points in a win at St. Francis (12/1/17).Grabbed a career-high five rebounds at Hofstra (2/7/17).Rejected 26 shots during her career.	POINTS 4 (4x) last time at SFU (12/2/17) REBOUNDS 5 vs. Hofstra (2/7/17) BLOCKS 3 vs. Mount St. Mary's (12/18/16) LAST GAME: 1 BLK IN 4 MINUTES
PPG	0.3	FG%	.000													
RPG	1.3	FT%	.500 (1-2)													
BPG	0.7	3PT%	-													
	21 BAILEY EICHNER, G/F SO./6-1/CUDAHY, WISC./CUDAHY	<table><tr><td>PPG</td><td>0.3</td><td>FG%</td><td>.000</td></tr><tr><td>RPG</td><td>0.3</td><td>FT%</td><td>.500 (1-2)</td></tr><tr><td>APG</td><td>0.0</td><td>3PT%</td><td>.000</td></tr></table>	PPG	0.3	FG%	.000	RPG	0.3	FT%	.500 (1-2)	APG	0.0	3PT%	.000	<ul style="list-style-type: none">Looking to expand her role this year after seeing action in 17 games last year.Had a career-high four points and added a career-high five rebounds vs. JMU (2/2/18).Made her collegiate debut in last year's season opener at Howard (11/11/17).Three sport athlete in high school playing basketball, volleyball, and track & field.	POINTS 4 vs. James Madison (2/2/18) REBOUNDS 5 vs. James Madison (2/2/18) ASSISTS 2 vs. Hofstra (1/19/18) LAST GAME: PLAYED 1 MINUTE
PPG	0.3	FG%	.000													
RPG	0.3	FT%	.500 (1-2)													
APG	0.0	3PT%	.000													
	25 GABBY ROGERS, C SO./6-1/DALLAS, TEXAS/BISHOP LYNCH	<table><tr><td>PPG</td><td>4.7</td><td>FG%</td><td>.600</td></tr><tr><td>RPG</td><td>2.0</td><td>FT%</td><td>1.000 (2-2)</td></tr><tr><td>BPG</td><td>0.3</td><td>3PT%</td><td>-</td></tr></table>	PPG	4.7	FG%	.600	RPG	2.0	FT%	1.000 (2-2)	BPG	0.3	3PT%	-	<ul style="list-style-type: none">Center that has started all three games this season for the TribeNotched a season-high eight points in the win at Loyola (11/17).Made her first career start on opening night against VCU (11/6) scoring four points.Scored a career-high nine points in last year's season opener at Howard (11/11/17).Had a bucket and had four rebounds in the CAA Quarterfinals against Elon (3/8/18).	POINTS 9 vs. Howard (11/11/17) REBOUNDS 5 at Elon (3/1/18) ASSISTS 1 (3x) last time vs. USC Upstate (12/5/17) LAST GAME: 8 PTS, 2 REB, 1 AST
PPG	4.7	FG%	.600													
RPG	2.0	FT%	1.000 (2-2)													
BPG	0.3	3PT%	-													
	30 VICTORIA REYNOLDS, F JR./5-10/FAIRFAX, VA./ARCHBISHOP SPALDING	<table><tr><td>PPG</td><td>9.3</td><td>FG%</td><td>.407</td></tr><tr><td>RPG</td><td>6.0</td><td>FT%</td><td>.750 (6-8)</td></tr><tr><td>SPG</td><td>0.7</td><td>3PT%</td><td>.000</td></tr></table>	PPG	9.3	FG%	.407	RPG	6.0	FT%	.750 (6-8)	SPG	0.7	3PT%	.000	<ul style="list-style-type: none">Started the last 33 games for the Tribe.Scored 10 points and grabbed eight rebounds, three assists, and two steals vs. Howard.Scored a career-high 22 points in the win at St. Francis (12/2/17).Grabbed 18 boards in the win against Charleston (1/26/18).Had seven steals in the win versus Hofstra (1/28/18).	POINTS 22 vs. St. Francis (Pa.) (12/2/17) REBOUNDS 18 vs. Charleston (1/26/18) STEALS 7 vs. Hofstra (1/28/18) LAST GAME: 10 PTS, 6 REB IN 33 MIN
PPG	9.3	FG%	.407													
RPG	6.0	FT%	.750 (6-8)													
SPG	0.7	3PT%	.000													
	32 CAROLINE STOVER, C FR./6-3/PLYMPTON, MASS./CARDINAL SPELLMAN	<table><tr><td>PPG</td><td>0.0</td><td>FG%</td><td>.000</td></tr><tr><td>RPG</td><td>0.0</td><td>FT%</td><td>-</td></tr><tr><td>APG</td><td>0.0</td><td>3PT%</td><td>-</td></tr></table>	PPG	0.0	FG%	.000	RPG	0.0	FT%	-	APG	0.0	3PT%	-	<ul style="list-style-type: none">Made her collegiate debut in the Tribe's win over Loyola.Freshman post player looking to break into the post rotation this season.Played four seasons of varsity basketball at Cardinal Spellman.Ranked as the No. 131 in her class by Blue Star.Tabbed to the Catholic Central League All-Star team.	POINTS - REBOUNDS - STEALS - LAST GAME: PLAYED 1 MINUTE
PPG	0.0	FG%	.000													
RPG	0.0	FT%	-													
APG	0.0	3PT%	-													

NOTES: