



WILLIAM & MARY

MEDIA RELATIONS DIRECTOR: Andrew Phillips / PHONE: (757) 221-3344 / CELL: (804) 840-4439 / EMAIL: atphillips01@wm.edu

TRIBE BY THE NUMBERS

A-10

Not really a number, but W&M will play its first of two straight games against an Atlantic 10 opponent tonight against Davidson. W&M heads to UofR on Wednesday.

4

The number of blocks that senior Abby Rendle needs to pass the school record set by Tiffany Benson at 255.

4-1

W&M is 4-1 for the third straight season. The Tribe has moved to 5-1 in each of the previous two seasons.

8

The Tribe hit a season-high eight 3-pointers in the win versus Loyola. W&M shot 42.1-percent from range in the win.

9.8

The Green and Gold is averaging 9.8 blocks per game, which leads the NCAA.

21

After not scoring against ECU, the Tribe bench responded with 21 points on Saturday. Sophomore Nari Garner led the reserves with eight points.

37.6

Jenna Green is averaging 37.6 mins. per game this season, including playing every minute twice. It is good for 29th in the country and third in the CAA.

41

The number of assists that the Tribe has amassed in its last two games. W&M is 50th in the country with 17.0 assists per game.

54

The number of wins by the senior class entering its final season. The group needs nine victories to be the winningest class in school history.

384

Number of career assists recorded by senior Jenna Green. She needs 114 this season to become the school record holder.

GAME

6

WILLIAM & MARY (4-1, 0-0 CAA) vs. DAVIDSON (3-3, 0-0 A-10)

Monday, Nov. 27, 2017 | 7 PM | Williamsburg, Va. | Kaplan Arena
Video: TribeAthletics TV/CAA.TV | Live Stats: TribeAthletics.com

SERIES HISTORY

ALL-TIME

W&M leads 4-1

Last: Davidson, 69-47 (Belk Arena) (11/19/10)

AT W&M

W&M leads 3-0

Last: W&M, 74-63 (Kaplan Arena) (11/22/09)

W&M NEWS AND NOTES

- The William & Mary women's basketball team looks to make it three in a row as it continues a stretch of five games in 10 days. W&M welcomes Davidson to Kaplan Arena on Tuesday for the first meeting in the series since 2010 and the first time in Williamsburg since 2009.

- The Green and Gold was selected to finish third in the preseason poll by a vote of league's 10 head coaches. W&M was only selected finish behind only James Madison and defending league champion Elon.

- After losing its top two scorers from last season, W&M has put, at least, three players in double-figures in all five games this season. Senior Jenna Green and junior Bianca Boggs have been in double-figures in every game, while senior Abby Rendle (four times) and sophomore Victoria Reynolds (three times) have also scored in double-figures, in at least one game, this season.

- In two of the last three-games, W&M has shot better than 50-percent from the floor. In its most recent contest against Loyola, the Tribe shot a season-high 51.8-percent (29-for-56) from the floor. The Tribe was a scorching 62.1-percent (18-of-29) from the floor in the first half of the victory.

- Senior Abby Rendle recorded her and W&M's third-ever triple double in the win against East Carolina on Tuesday night with career-highs of 25 points, 17 rebounds, and 10 blocks. Rendle also recorded a triple-double in the win versus East Carolina last season. It was just the sixth triple-double in the country this season. Since not scoring in the opener, Rendle is averaging 16.8 points, 11.0 rebounds, and 7.3 blocks a game.

- Not only is senior Jenna Green scoring at a higher rate this season, but she is also finding her teammates at a higher clip through five games. The Clifton, Virginia native has been in double-figures in all five games and is averaging 11.6 points per game. She has added 30 assists (6.0 apg.), which is good for 35th in the NCAA.

- Senior Abby Rendle, who is on pace to break the school record for blocks tonight against Davidson, has gotten to this point a little bit faster than anticipated. The senior already has 30 blocks this season (6.0 bpg.) and both of those numbers lead the country. With four more blocks tonight, she will pass Tiffany Benson's mark of 255, and then turn her eyes to the league record of 273 held by WNBA All-Star Elena Delle Donne.

- Junior Bianca Boggs has had a strong start to the season. She has been the team's leading scorer twice, including setting a career high with 26 points and 11 rebounds against Howard. The Waldorf, Md. native has also added seven blocks and 14 steals. For the year she is averaging a team-high 17.5 points per game to go along with 5.6 rebounds, and 2.6 assists.

- Sophomore Victoria Reynolds has made the most of her first five career starts this season. She is third on the team averaging 12.4 points, and second with 7.4 rebounds per contest. Reynolds set a career-high with 19 points in the season opening win at Howard, while she also leads the team with 17 steals. Her 3.4 steals a game rank her 20th in the country.

- For the past four seasons, W&M has led the league in steals each year. So far this season, the Tribe is doing much of the same. Through five games, W&M has had 54 thefts, which is first in the CAA at 10.8 steals per game and 42nd in the NCAA.

	Nov. 11 at Howard	W, 83-71	W&M jumped out to a 24 point first-half lead and never looked back in the 83-71 win. Junior Bianca Boggs had a double-double (26 pts, 11 rebs) leading three in double figures.
	NOV. 14 FAIRFIELD	W, 57-47	Seniors Jenna Green (11 pts, 11 reb.) and Abby Rendle (10 pts, 13 reb.) had double-doubles to lead the Tribe to a 10-point home opening win in the first-ever meeting vs. Fairfield.
	Nov. 17 at St. John's	L, 81-92	Senior Abby Rendle led the Tribe with 22 points, five rebounds, and five blocks, but the Tribe couldn't overcome a big third quarter from St. John's, suffering its first loss of the season.
	Nov. 21 at East Carolina	W, 71-65 (ot)	Senior Abby Rendle notched her third career triple-double with 25 points, 17 rebounds, and 10 blocks as the Tribe picked up a hard fought road win in overtime at East Carolina.
	NOV. 25 LOYOLA	W, 70-49	Four players scored in double-figures as William & Mary led from start to finish in a 70-49 triumph versus Loyola. Victoria Reynolds led the Tribe with 13 points.
	NOV. 27 DAVIDSON Video: Tribe Athletics TV/CAA.TV	7 PM	Atlantic 10 foe Davidson travels to Williamsburg for the first meeting between the two programs since 2010. W&M leads the all-time series 4-1.
	Nov. 29 at Richmond Video: SpiderTV	3 PM	The second most played series in school history, W&M and Richmond meet for the 111th time at the Robins Center. The Tribe stomped the Spiders 67-39 last season.
	Dec. 2 at St. Francis Video: NEC Front Row	2 PM	W&M heads to Pennsylvania to renew its rivalry with St. Francis (Pa.) for the sixth time in series history. The Tribe holds a slim 3-2 series lead thanks to its triumph last season.
	DEC. 5 USC UPSTATE Video: Tribe Athletics TV/CAA.TV	7 PM	The Green and Gold close non-conference play with a three-game homestand starting with USC Upstate. W&M won the first-ever meeting last year, 49-46.
	DEC. 17 OLD DOMINION Video: Tribe Athletics TV/CAA.TV	5 PM	Former CAA rivals, W&M and ODU meet for the 93rd time in series history this year. The Tribe has won the last two games in the series, including a 69-58 win last year.
	DEC. 21 NORFOLK STATE Video: Tribe Athletics TV/CAA.TV	2 PM	W&M closes non-conference play and its homestand as they host NSU It is the third straight season the two schools have met with W&M winning both previous meetings.
	Dec. 29 at Charleston * Video: CAA.TV	6:30 PM	The Tribe opens CAA play on the road for the third time in four seasons as they travel to Charleston. The Cougars swept last seasons series against W&M.
	Dec. 31 at UNCW* Video: CAA.TV	2 PM	The Green and Gold closes its CAA opening road trip at UNCW. The Tribe picked up the season series sweep, including a 57-43 victory in the Port City last year.
	JAN. 5 DREXEL* Video: Tribe Athletics TV/CAA.TV	7 PM	W&M meets Drexel for its CAA home opener. The Tribe and Dragons split last season's series, with W&M winning at home, 74-65.
	JAN. 7 TOWSON* Video: Tribe Athletics TV/CAA.TV	2 PM	The Tribe hosts Towson and new head coach Diane Richardson for the first time. The teams split last season both winning on their home court.
	JAN. 14 ELON * Video: Tribe Athletics TV/CAA.TV	2 PM	A CAA semifinal rematch, W&M host Elon looking for its first win against the Phoenix since they joined the CAA. Last year, Elon squeaked out a 60-58 in Kaplan Arena.
	Jan. 19 at Hofstra * Video: CAA.TV	11:30 AM	W&M plays Hofstra twice in the stretch of nine days starting on the road with a Friday morning game. The Pride used a 4th quarter comeback to pick up a 64-61 win last year.
	Jan. 21 at Northeastern * Video: CAA.TV	2 PM	The Tribe closes its second CAA road trip at Northeastern. W&M has won its last three games against the Huskies.
	JAN. 26 CHARLESTON * Video: Tribe Athletics TV/CAA.TV	7 PM	The Green and Gold closes its first conference series against College of Charleston. The game also opens its final three-game homestand of the season against the Cougars.
	JAN. 28 HOFSTRA Video: Tribe Athletics TV/CAA.TV	2 PM	W&M closes its season with Hofstra as the Pride travels to Williamsburg. The Tribe rolled the Pride last year in Williamsburg, 81-65.
	FEB. 2 JAMES MADISON Video: Tribe Athletics TV/CAA.TV	7 PM	The Tribe welcomes James Madison for its Pink Game. W&M and James Madison have split the regular season series each of the last two year.
	Feb. 4 at Towson * Video: CAA.TV	2 PM	The Tribe plays at Towson on Super Bowl Sunday. It is the 25th consecutive Super Bowl Sunday. W&M fell last season at SECU arena 64-60 on Jan. 20.
	Feb. 9 at Delaware * Video: CAA.TV	7 PM	W&M meets Delaware for the first time on the season in Newark. The Tribe has won three of its last four games at the Bob Carpenter Center.
	FEB. 11 NORTHEASTERN * Video: Tribe Athletics TV/CAA.TV	2 PM	The Tribe host Northeastern for its Second Annual Golden Game as part of Charter Day weekend. W&M hasn't lost to Northeastern at home since the 2009 season.
	FEB. 16 UNCW * Video: Tribe Athletics TV/CAA.TV	7 PM	Local product Karen Barefoot returns to Kaplan Arena this time as the head coach of UNCW. W&M has won the last four games in Kaplan Arena against the Seahawks.
	Feb. 18 at Drexel * Video: CAA.TV	2 PM	The Tribe heads to the DAC, the site of the 2018 CAA Tournament to close the regular season series with Drexel. The Tribe last won in Philadelphia in 2015.
	Feb. 23 DELAWARE * Video: Tribe Athletics TV/CAA.TV	7 PM	W&M plays the Blue Hens for the second time in two weeks as it hosts UD for Senior Day. W&M is looking for its first home win against Delaware since 2008.
	Mar. 1 at Elon * Video: CAA.TV	7 PM	The Green and Gold heads to defending league champion Elon. It is the final season of Alumni Gym, where the Tribe is 1-4 all-time.
	Mar. 3 at James Madison * Video: CAA.TV	2 PM	W&M closes the regular season at James Madison. The Tribe picked up its first victory at the Convocation Center since 1999 with a 62-53 victory last season.
	Mar. 7-10 CAA Championship		Drexel hosts the 2018 CAA Championships in Philadelphia, Pa. W&M won its first CAA Tournament game since 2009 and advanced to the CAA Semis for the first time since 2001 last season.

GENERAL INFORMATION

Name: College of William & Mary
Location: Williamsburg, Va.
Founded: 1693 (2nd oldest college in U.S.)
Enrollment (includes graduate): 8,617
Nickname: Tribe
Colors: Green, Gold and Silver
Arena (capacity): Kaplan Arena (8,600)
Affiliation: NCAA Division I
Conference: Colonial Athletic Association (CAA)
President: W. Taylor Reveley (Princeton, 1965)
Chancellor: Robert M. Gates (William & Mary, 1965)
Director of Athletics: Samantha K. Huge (Gordon, 1992)

LAST GAME STARTERS

2 BIANCA BOGGS

So. • G • 5-9

Waldorf, Md./St. Mary's Ryken

G-GS	PPG	RPG	APG	FG%	3P%	FT%	STL	BLK
5-5	16.2	5.6	2.6	.441	.467	.667	14	7

- Had 17 points, eight rebounds, three assists, two blocks and steals at ECU (11/21/17).
- Scored a career-high 26 points and career-high 11 rebounds in the win at Howard (11/11/17).
- Added 15 points and four steals and rebounds at St. John's (11/17/17).
- Scored in double-figures 21 times in career, including every game this season.

11 NYLA POLLARD

Fr. • G • 5-9

Virginia Beach, Va./Princess Anne

G-GS	PPG	RPG	APG	FG%	3P%	FT%	STL	BLK
5-5	5.2	1.4	1.4	.400	.333	.800	1	0

- Freshman guard that has earned the start in every contest this season.
- Scored a career-high nine points and grabbed three rebounds at St. John's (11/17/17).
- Earned her first career start in the win at Howard (11/11/17) with six points a rebound & assist.
- Helped lead Princess Anne to four straight VHSL State Titles during her high school career.
- Ran the 400-meter, 4x1, and 4x4 for her Princess Ann in high school.

12 JENNA GREEN

Sr. • G • 5-7

Clifton, Va./Centreville

G-GS	PPG	RPG	APG	FG%	3P%	FT%	STL	BLK
5-5	11.6	4.4	6.0	.447	.417	.647	7	2

- Two-time CAA All-Academic Team selection that has been named a team captain this season.
- Notched her first double-double with 11 pts and rebs with eight assists vs. Fairfield (11/14/17)
- Scored 15 points in the season opener at Howard (11/11/17), adding four dimes.
- Dished out a career-high 11 assists at College of Charleston. (1/6/17).
- Ranks fourth in W&M history with 384 career assists.

24 ABBY RENDLE

Sr. • C • 6-4

Reston, Va./South Lakes

G-GS	PPG	RPG	APG	FG%	3P%	FT%	STL	BLK
5-5	13.4	8.8	1.4	.490	-	.654	4	30

- Two-time CAA All-Defensive Team selection that was tabbed to the Preseason All-CAA 2nd-Team
- Recorded her third triple-double with CH's of 25 pts, 17 rebs, and 10 blks at ECU (11/21/17).
- Notched a then-season-high 22 points in the setback at St. John's (11/17/17).
- Ranks second all-time in school history with 252 career blocks.
- Owns the single season record with 101 blocks, which she did last year.

30 VICTORIA REYNOLDS

So. • F • 5-10

Pasadena, Md./Archbishop Spalding

G-GS	PPG	RPG	APG	FG%	3P%	FT%	STL	BLK
5-5	12.4	7.4	3.0	.533	.400	.750	17	5

- Scored 13 points with seven rebounds and a career-high eight dimes at East Carolina (11/21/17).
- Made her first career-start and scored a career-high 19 pts and 6 rebs at Howard (11/11/17).
- Had a career-high 10 rebounds at St. John's (11/17/17).
- Set a career-high with six steals at Towson (1/20/17).
- Parents, Bernard Wanjara and Sabrina Reynolds Pinkard played hoops at George Mason.

TRIBE TRENDS

WILLIAM & MARY RECORD	
Overall.....	4-1
CAA Games.....	0-0
Leads at halftime.....	2-1
Trails at halftime.....	2-0
Tied at Halftime.....	0-0
Home.....	2-0
Away.....	2-1
Neutral.....	0-0

BY MONTH	
November.....	4-1
December.....	0-0
January.....	0-0
February.....	0-0
March.....	0-0

SCORING...	
W&M scores fewer than 40 pts.....	0-0
W&M scores 40-49.....	0-0
W&M scores 50-59.....	1-0
W&M scores 60-69.....	0-0
W&M scores 70-79.....	2-0
W&M scores 80+.....	1-1
Opp. scores fewer than 40 pts.....	0-0
Opp. scores 40-49.....	2-0
Opp. scores 50-59.....	0-0
Opp. scores 60-69.....	1-0
Opp. scores 70-79.....	1-0
Opp. scores 80+.....	0-1

FROM THE FIELD ...	
W&M shoots below 35%.....	0-0
W&M shoots better than 35%.....	4-1
W&M shoots better than 40%.....	2-1
W&M shoots better than 45%.....	3-1
W&M shoots better than 40%.....	1-1
W&M shoots better than 45%.....	1-1

FINAL MARGIN	
1-3 points.....	0-0
4-7 points.....	1-0
8-10 points.....	1-0
11-15 points.....	1-1
16+ points.....	1-0
In Overtime.....	1-0

BATTLE OF THE BOARDS	
Outrebounding opponent.....	2-1
Outrebounded by opponent.....	2-0
Rebounds are even.....	0-0

DOWN TO THE WIRE	
Leading with 5:00 left.....	4-0
Trailing with 5:00 left.....	0-1
Tied with 5:00 left.....	0-0

LAYING IT ON THE LINE...	
W&M attempts more free throws.....	3-1
Opp. attempts more free throws.....	1-0
Free Throws are even.....	0-0

JERSEY COLOR	
White.....	2-0
Green.....	2-1
Gold.....	0-0
Pink.....	0-0

STRENGTH OF OPPOSITION	
vs. Top 25 teams.....	0-0
vs. teams with a winning record.....	0-1
vs. teams .500 record.....	0-0
vs. teams with a losing record.....	3-0

STREAKING	
Coming off of a win.....	2-1
Coming off of a loss.....	1-0
Longest Winning Streak.....	W-2
Longest Losing Streak.....	L-1
Current Streak.....	W-2

RESERVES

POS.	NO.	NAME	HT.	CL.	G-GS	PPG	RPG	APG	FG%	3P%	FT%	MISC.
G	0	Libby Underwood	5-9	Fr.	5-0	2.0	0.4	0.4	.333	.400	.333	-

NOTE: Two-time New Hampshire State Player of the Year

G	3	Ashley Taylor	5-8	So.	2-0	0.0	1.0	0.5	-	-	-	-
---	---	---------------	-----	-----	-----	-----	-----	-----	---	---	---	---

NOTE: Saw action in seven games during her freshman season

G/F	4	Jeanne Gaumont	6-0	Sr.	2-0	1.5	1.0	0.5	.250	.500	-	2 stl.
-----	---	----------------	-----	-----	-----	-----	-----	-----	------	------	---	--------

NOTE: Missed the first three games, but has played in the last two contests

G/F	5	Misha Jones	5-9	Jr.	5-0	2.8	1.2	1.4	.444	.429	.750	2 stl.
-----	---	-------------	-----	-----	-----	-----	-----	-----	------	------	------	--------

NOTE: Team captain, who had a season-high with six points against Loyola (Md.) 11/25/17

G	10	Nari Garner	5-7	So.	5-0	4.4	1.0	0.0	.320	.214	.750	5 stl.
---	----	-------------	-----	-----	-----	-----	-----	-----	------	------	------	--------

NOTE: Has had a career-high eight points against Fairfield and Loyola.

C	20	Chandler Smith	6-3	Jr.	5-0	0.8	1.2	0.2	.400	-	-	3 blk
---	----	----------------	-----	-----	-----	-----	-----	-----	------	---	---	-------

NOTE: First player off the bench versus Howard; Had 11 blocks in 13 appearances last season

G/F	21	Bailey Eichner	6-1	Fr.	2-0	1.0	1.5	0.0	.000	-	.500	1 blk
-----	----	----------------	-----	-----	-----	-----	-----	-----	------	---	------	-------

NOTE: Three sport athlete in high school running track, and playing volleyball and basketball

C	25	Gabby Rogers	6-1	Fr.	5-0	2.8	2.2	0.2	.600	-	.500	1 stl
---	----	--------------	-----	-----	-----	-----	-----	-----	------	---	------	-------

NOTE: Scored nine points and had four rebounds in the win versus Howard.

G	31	Harper Birdsong	5-10	So.	-	-	-	-	-	-	-	-
---	----	-----------------	------	-----	---	---	---	---	---	---	---	---

NOTE: Transfer from George Washington that has to sit out the 2017-18 because of NCAA rules.

W&M INDIVIDUAL SUPERLATIVES

Double-Digit Games	15-16	16-17	17-18	Career	Double-Doubles	15-16	16-17	17-18	Career
Abby Rendle	13	13	4	40	Abby Rendle	3	2	2	8
Bianca Boggs	9	8	5	22	Bianca Boggs	1	-	1	2
Jenna Green	2	6	5	17	Jenna Green	-	-	1	1
Victoria Reynolds	-	4	3	7					
Jeanne Gaumont	2	-	-	2					

20-Point Games	15-16	16-17	17-18	Career
Abby Rendle	2	-	2	4
Bianca Boggs	-	-	1	1

30-Point Games	15-16	16-17	17-18	Career
None				

10-Rebound Games	15-16	16-17	17-18	Career
Abby Rendle	3	2	2	8
Bianca Boggs	-	1	1	2
Jenna Green	-	-	1	1
Victoria Reynolds	-	-	1	1

10-Assist Games	15-16	16-17	17-18	Career
Jenna Green	-	1	-	1

Triple-Doubles	15-16	16-17	17-18	Career
Abby Rendle	1	1	1	3

Leading Scorer (times): - Boggs (2), Rendle (2), Reynolds (1)

Leading Rebounder (times): - Rendle (3), Boggs (1), Reynolds (1)

Leading Assists (times): - Green (4), Jones (1), Reynolds (1)

Charges (times): -Jones (2), Rogers (2), Eichner (2), Gaumont (1)

Three-Point Plays (Made/Attempted): - Boggs (1-1), Green (1-1) Rendle (1-2)

Team

W&M scored 80+ points	11/17/2017	81 (81-92, L at St. John's)
W&M scored 85+ points	11/29/2014	90 (90-55 W, vs. Longwood)
W&M scored 90+ points	11/29/2014	90 (90-55 W, vs. Longwood)
W&M scored 95+ points	2/16/2014	97 (97-44 W, vs. UNCW)
Opponent scored 80+	11/17/2017	92 (92-81 L, at St. John's)
Opponent scored 85+	11/17/2017	92 (92-81 L, at St. John's)
Opponent scored 90+	11/17/2017	92 (92-81 L, at St. John's)
W&M grabbed 50+ rebounds	12/29/2015	53 (75-64 W, vs. Old Dominion)
W&M grabbed 60+ rebounds	12/21/2006	60 (73-58 W, at Norfolk State)
Held an Opponent to 50 pts. or less	11/25/17	49 (70-49 W, vs. Loyola)
Held an Opponent to 40 pts. or less	12/3/2016	39 (67-39, W vs. Richmond)
W&M was held under 50 pts.	2/19/2017	47 (47-70, L at Elon)
Shot 50% from the field	11/25/2017	51.8% (29-for-56) (70-49, W vs. Fairfield)
Shot 80-89% from the foul line (8 or more attempts)	3/10/2017	81.3 (13-for-16) (60-88, L vs. Elon)
Shot 90-99% from the foul line (8 or more attempts)	11/17/2017	90.5 (19-for-21) (81-92, L at St. John's)
Shot 100% from the foul line (8 or more attempts)	2/28/2016	100.0% (8-8) (53-69 L, at Drexel)
Had a 20-pt. win	11/25/17	21 (W, 70-49 vs. Fairfield)
Had a 30-pt. win	11/28/2016	34 (W, 82-48 vs. Delaware State)
Had a 40-pt. win	2/16/2014	53 (97-44 W, vs. UNCW)
Had a 50-pt. win	2/16/2014	53 (97-44 W, vs. UNCW)
Had a 20-pt. loss	3/10/2017	28 (L, 60-88 at Elon)
Had a 30-pt. loss	1/21/2016	30 (L, 45-75 at Hofstra)
An overtime win	11/21/2017	71-65 at East Carolina
An overtime loss	2/17/2017	69-71 vs. College of Charleston
A double-overtime game	2/6/2015	72-68, W at Drexel
A triple-overtime game	11/29/1999	77-83, L at VCU
10-game winning streak	2016-17	11 (11/18/2016-1/6/17)
5-game winning streak	2016-17	11 (11/18/2016-1/6/17)
5-game losing streak	2015-16	5 (2/5/2016-2/21/2016)
10-game losing streak	2012-13	11 (11/25/2012-1/20/2013)

Individual

20-24 pts.	22, Abby Rendle at St. John's, 11/17/17
25-29 pts.	25, Abby Rendle at East Carolina, 11/21/17
30-34 pts.	30, Emily Correal at North Carolina A&T, 12/21/12
35-39 pts.	39, Lynn Norenberg at Virginia Wesleyan, 11/15/80
40+ pts.	53, Bebe Fisher vs. Norfolk Division, 2/13/52
5 players in double figures	Jazmen Boone (16), Abby Rendle (14), Kyla Kerstetter (12), Latrice Hunter (11), Marlena Tremba (11) at Drexel, 2/6/15
Two players with 20 pts. or more	Alexandra Masaquel (28) and Marlena Tremba (21) vs. Towson, 2/26/16
Player with 10-14 rebounds	10, Victoria Reynolds at St. John's, 11/17/17
Player with 15-19 rebounds	17, Abby Rendle at East Carolina, 11/21/17
Player with 20 or more rebounds	21, Emily Correal vs. George Mason, 3/16/13
Two players with 10 or more rebounds	13, Abby Rendle and 11, Jenna Green vs. Fairfield, 11/14/17
A player with a triple-double	Abby Rendle (25 pts, 17 reb, 10 blks) at East Carolina, 11/21/17
A player with a double-double	Abby Rendle (25 pts, 17 reb, 10 blks) at East Carolina, 11/21/17
Two players with double-doubles	Abby Rendle (10 pts, 13 reb) and Jenna Green (11 pts, 11 reb) vs. Fairfield, 11/14/17
100% from the field (min. 5 made)	7-for-7, Abby Rendle vs. Drexel 3/1/17
100% from foul line (min. 5 made)	6-for-6, Bianca Boggs at St. John's, 11/17/17
5-7 Assists	5, Bianca Boggs vs. Loyola, 11/25/17
8-9 Assists	8, Jenna Green vs. Loyola, 11/25/17
10+ Assists	10, Marlena Tremba vs. College of Charleston, 2/17/17
5 or more steals	5, Victoria Reynolds at St. John's, 11/17/17
5-9 blocks	7, Abby Rendle vs. Loyola, 11/25/17
10+ blocks	10, Abby Rendle at East Carolina, 11/17/17

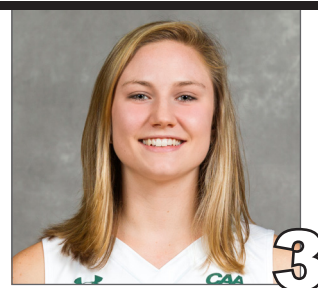
BOLD - Happened in the 2017-18 season

**LIBBY UNDERWOOD**

Fr. • Guard • 5-9
Rye, New Hampshire

**BIANCA BOGGS**

Jr. • Guard • 5-5
Waldorf, Md.

**ASHLEY TAYLOR**

So. • Guard • 6-0
Charlottesville, Va.

**JEANNE GAUMONT**

Sr. • Guard/Forward • 6-0
Saint-Lambert, Quebec

**MISHA JONES**

Jr. • Guard/Forward • 5-9
Manassas Park, Va.

**NARI GARNER**

So. • Guard • 5-7
Tampa, Fla.

**NYLA POLLARD**

Fr. • Guard • 5-9
Virginia Beach, Va.

**JENNA GREEN**

Sr. • Guard • 5-7
Clifton, Va.

**CHANDLER SMITH**

Jr. • Center • 6-3
Port Tobacco, Md.

**BAILEY EICHNER**

Fr. • Guard/Forward • 6-1
Cudahy, Wisc.

**ABBY RENDLE**

Sr. • Center • 6-4
Reston, Va.

**GABBY ROGERS**

Fr. • Center • 6-1
Dallas, Texas

**VICTORIA REYNOLDS**

So. • Forward • 5-10
Pasadena, Md.

**HARPER BIRDSONG**

So. • Guard • 5-10
Suffolk, Va.

**ED SWANSON**

Fifth Season at W&M
28th Overall

PRONUNCIATION GUIDE

Sarah EICHLER	IKE-ler
Bailey EICHNER	IKE-ner
NARI Garner	Nar-ee
JEANNE GAUMONT	Ja-on
	Gow-mon
Lynne KOKOSKI	Kah-kaw-ski
CHANEL Murchison	Shh-nell



ED

SWANSON

HEAD COACH

28TH SEASON OVERALL5TH SEASON AT W&M

PROFILE

Wife: Marion
Children: Connor and Matthew

Education
Sacred Heart, 1989

Coaching Career
Sacred Heart (1989-13)
William & Mary (2013-P)

CAREER HIGHLIGHTS

- Three NCAA Tournament Appearances
- Led W&M to 1st Division I Postseason berth in the WBI.
- Led W&M to a school record 20 wins in 2016-17
- 2016-17 VaSID Coach of the Year
- Six Postseason Appearances
- Four regular season conference championships and three postseason league titles
- 2009 New England Hall of Fame Inductee
- Eight 20-win seasons
- Five-time Conference Coach of the Year
- On five occasions, his teams have earned to the WBCA Academic Top 25 Team Honor

Ed Swanson enters his fifth season with the Green and Gold. He became the fifth Division I head women's basketball coach in William and Mary history on May 7, 2013. Prior to coming to Williamsburg, he spent 23 years transforming Sacred Heart University from a Division II program into one of the top teams in the Northeast Conference. Swanson owns a career record of 464-327 (.587) and ranks 40th among active Division I head coaches in victories.

Swanson led the Tribe to one of its best seasons in program history in 2016-17. The Tribe tied a school record with 20 wins, while winning a CAA Tournament game for the first time since 2009, and advancing to the CAA Semifinals for the first time since 2001. Under his leadership, the Tribe won 11-straight games, which is the longest single-season streak in school history, from Nov. 18, 2016-Jan. 2, 2017. W&M had four players claim seven all-conference awards during the 2016-17 campaign, including seniors Alexandra Masaquel and Marlena Tremba, who each earned second-team citations. Additionally, Masaquel was tabbed the Richmond Times-Dispatch All-State Second-Team, while Tremba earned VaSID All-State Second-Team honors. For his efforts, VaSID honored him as the Virginia State Coach of the Year.

Once again Swanson's third season was one for the record books. The Tribe raced out to its best start in school history with an 11-2 record. W&M went onto again to win the fourth most wins in school history with 15. For the second straight season the Tribe broke the blocks and assist record, by tying the single season assist record (466) and broke the school record for blocks with 148. During the season junior Marlena Tremba became the 15th player in school history to break the 1000-point barrier. Individually, four players earned All-CAA awards as junior Alexandra Masaquel was tabbed to the second-team and all-defensive team, Tremba earned third-team honors, and freshman Bianca Boggs picked up a spot on the all-rookie team. The Tribe was also rewarded for its hard work in the classroom as Masaquel, Tremba, and sophomore Jenna Green earned all-academic team honors.

Swanson's second year with the Green and Gold was one for the record books. The Tribe racked up 15 wins, the fourth-most in school history, on its way to its first-ever postseason appearances with bid in the Women's Basketball Invitational. The Green and Gold had a seven-win turnaround, while setting three school records for assists (466), blocked shots, (143), blocked shots per game (4.5). Individually he helped lead four players to five All-CAA awards. Sophomore Marlena Tremba was named to the All-CAA Third-Team, senior Jazmen Boone was named to the All-Defensive Team, freshman Abby Rendle to the All-Rookie and All-Defensive team, and senior Kyla Kerstetter earned all-academic honors.

In his first season with the Tribe, Swanson led a young team to eight victories in a seven-seed in the CAA Tournament. The Green and Gold finished in the top 10 nationally in steals per game, while Jazmen Boone also ranked in the top 20 in the NCAA in the same category. Under his guidance Kaitlyn Mathieu garnered Third-Team All-Colonial Athletic Association honors, and went on to sign a professional contract with a team in Germany. In addition, guard Marlena Tremba went onto win CAA Rookie of the Year, and was named to the all-rookie squad. Boone was named to the all-defensive team, while she and Kyla Kerstetter took home all-academic honors.

Swanson oversaw Sacred Heart's transition from Division II to Division I in 1999-00, and the program took off under his direction. Over Sacred Heart's 14 years in Division I, Swanson led SHU to a 280-145 record (.664), including a 190-62 (.754) record in the NEC. He departed as the NEC's all-time winningest head coach with all of his SHU teams finishing third or higher in the league standings. Swanson-lead teams have posted 13 straight winning seasons and 12 straight campaigns with 18 or more victories, including six with 20 or more wins. In 2009, he was inducted into the New England Basketball Hall of Fame.

In total, Swanson-coached players earned 19 All-NEC honors, including nine first-team awards, nine NEC All-Tournament Team honors, eight NEC All-Rookie Team selections, four NEC Rookies of the Year, three NEC Tournament MVPs and three NEC Players of the Year.

His teams have also enjoyed success in the classroom. On five occasions, the Pioneers were selected to the Women's Basketball Coaches Association (WBCA) Academic Top 25 Team Honor Roll, which has recognized outstanding academic performances from the top teams in each of the five collegiate divisions since 1995-96. On eight occasions since 2003, one of his players was

a CoSIDA Academic All-District selection and two Pioneer players were named NEC Scholar-Athlete of the Year.

In 2012-13, Swanson led Sacred Heart to its third straight postseason appearance, and in the process, recorded his 400th career victory. His milestone win came on Feb. 12, 2013 as the Pioneers defeated Fairleigh Dickinson. SHU completed the season at 22-11, finishing second in the NEC with a 13-5 ledger and garnering a berth in the program's first Women's National Invitational Tournament (WNIT).

Sacred Heart claimed its third NEC Championship and advanced to the NCAA Tournament in 2011-12. The Pioneers also ranked 23rd nationally in the WBCA Academic Top 25 Team Honor Roll with a team GPA of 3.35. SHU compiled a season mark to 25-8, winning both the regular season and postseason crowns in the league as Swanson was named NEC Coach of the Year for the fourth time.

The Pioneers earned a berth in the 2011 Women's Basketball Invitational and finished the year at 18-13 with a 12-6 mark in the NEC. After a 0-5 start to the 2008-09 season, Swanson's Pioneers reeled off a 21-game winning streak, the longest in school history and second longest in the country, before finishing with 25-8 record. SHU completed the NEC regular season with a perfect 18-0 mark, becoming just the third team in the history of the conference to accomplish the feat. Swanson earned NEC Coach of the Year honors as Sacred Heart finished off an amazing season by capturing its second league title and trip to the NCAA Tournament over a four-year span. During the 2008-09 season, Swanson moved past former Mount St. Mary's head coach Bill Sheahan (124) as all-time leader in Northeast Conference wins and eclipsing the 300-win plateau in his career.

The 2005-06 season saw Swanson lead the Sacred Heart program to its first NCAA Tournament, capturing the NEC Championship in just its seventh season at the Division I level. Swanson guided the Pioneers to a school record 26-5 record, including a 16-2 NEC ledger. He also garnered career victory No. 250 during the season.

Under his leadership, Sacred Heart was one of the toughest teams on its home court, the William H. Pitt Center, which opened in 1997. During the Pitt Center's opening 16 seasons, Swanson's teams won 81.9 percent (185-41) of its home games. In 2011-12, SHU went 15-1 at home, a season bested only by a perfect 15-0 in 2005-06 and 14-0 in 2003-04. During the stretch, the Pioneers' home winning percentage at the Pitt Center ranked among the best nationally.

After directing the Pioneers to a 20-7 record — the program's first 20-win season — in 1995-96, Swanson was voted Coach of the Year in the New England Collegiate Conference (NECC) and the Women's Basketball Coaches Association's (WBCA) District I.

Swanson took the reins of the Sacred Heart University women's basketball program in 1990 and built the Pioneers into one of the top teams in the Northeast. He joined Dave Bike's men's basketball coaching staff at SHU in 1989, and, after becoming head coach of the Pioneer women's program in 1990, did double duty for three seasons before becoming the University's first full-time women's coach in 1993. Prior to Swanson's arrival, the Sacred Heart women's team compiled a 4-21 record. Under his guidance, the climb to Division II respectability was accomplished within three seasons, from 8-19 to 11-16 and, in 1992-93, to 16-13 — the program's first winning record in 11 seasons.

In his time at SHU, he was a four-time NEC Coach of the Year, led Sacred Heart to five postseason bids, including three NCAA Tournament appearances. Swanson guided the Pioneers to four NEC regular season crowns and three NEC tournament championships. SHU posted 20-win seasons seven times during his tenure, including five of the last eight years.

He earned a bachelor's degree in business from Sacred Heart in 1989. Also during his tenure at SHU, Swanson served as the moderator for the Pioneer Student-Athlete Council from 1998-01 and was the annual coordinator of commencement exercises since 2000. Swanson and his wife, Marion, have two sons, Connor and Matthew.

CAREER RECORD

YEAR	OVERALL RECORD	CONF. RECORD	CONF. FINISH	POST SEASON
1990-91	8-19	3-11	7th	
1991-92	11-16	5-9	T5th	
1992-93	16-13	7-7	4th	
1993-94	12-15	8-8	5th	
1994-95	11-16	7-9	5th	
1995-96	20-7	16-4	T2nd	
1996-97	14-14	10-8	5th	
1997-98	19-7	13-3	2nd	
1998-99	15-12	12-6	3rd	
1999-00	14-14	11-7	T3rd	
2000-01	15-14	11-7	T3rd	
2001-02	18-11	13-5	T2nd	
2002-03	18-10	12-6	T3rd	
2003-04	21-8	14-4	2nd	
2004-05	18-11	14-4	2nd	
2005-06	26-5	16-2	1st	NCAA
2006-07	22-10	15-3	T1st	
2007-08	19-11	14-4	3rd	
2008-09	25-8	18-0	1st	NCAA
2009-10	19-11	14-4	3rd	
2010-11	18-13	12-6	T3rd	WBI
2011-12	25-8	15-3	1st	NCAA
2012-13	22-11	13-5	2nd	WNIT
2013-14	8-21	5-11	8th	
2014-15	15-16	9-9	6th	WBI
2015-16	15-15	6-12	7th	
2016-17	20-11	9-9	4th	
2017-18	4-1	0-0		
Career	468-328 (.588)	286-168 (.630)		
Division I	342-209 (.621)	220-103 (.681)		
W&M/CAA	62-64 (.492)	29-41 (.414)		



#0 LIBBY UNDERWOOD

FRESHMAN - GUARD

RYE, N.H. - PORTSMOUTH

>> UNDERWOOD'S CAREER HIGHS

MINUTES			FREE THROWS		
Season	14	vs. Loyola, 11/25/17	Season	1	(2x) last time vs. Loyola, 11/25/17
Career	14	vs. Loyola, 11/25/17	Career	1	(2x) last time vs. Loyola, 11/25/17
POINTS			ASSISTS		
Season	5	at St. John's, 11/17/17	Season	1	(2x) last time vs. Loyola, 11/25/17
Career	5	at St. John's, 11/17/17	Career	1	(2x) last time vs. Loyola, 11/25/17
REBOUNDS			STEALS		
Season	1	(2x) last time vs. Loyola, 11/25/17	Season	-	-
Career	1	(2x) last time vs. Loyola, 11/25/17	Career	-	-
FIELD GOALS			BLOCKS		
Season	2	at St. John's, 11/17/17	Season	-	-
Career	2	at St. John's, 11/17/17	Career	-	-
3-POINT FIELD GOALS			MISCELLANEOUS		
Season	1	(2x) last time at St. John's, 11/17/17	Career in Double Figures		0
Career	1	(2x) last time at St. John's, 11/17/17	2017-18 in Double Figures		0

>> UNDERWOOD'S CAREER STATISTICS

Season	GP	GS	Min/Avg	FG-FGA	Pct	3pt-Att	Pct	FT-FTA	Pct	Off	Def	Reb	Avg	PF	FO	A	TO	Blk	S	TP	Avg
2017-18	5	0	44/8.8	3-9	.333	2-5	.400	2-6	.333	0	2	2	0.4	1	0	2	5	0	0	10	2.0
CAREER	5	0	44/8.8	3-9	.333	2-5	.400	2-6	.333	0	2	2	0.4	1	0	2	5	0	0	10	2.0

>> 2017-18 GAME-BY-GAME

Opp	Date	GS	Min	FG-A	3FG-A	FT-A	Reb.	A	TO	BLK	STL	PTS
at How.	11/11	*	31	8-18	3-6	7-10	11	1	3	1	4	26
FAIRFIELD	11/14	*	33	4-10	2-3	2-3	3	1	6	1	2	12
at SJU	11/17	*	30	4-10	1-2	6-6	4	3	5	1	4	15
at ECU	11/21	*	41	5-14	0-2	7-14	8	3	3	2	2	17
LOYOLA	11/25	*	21	5-7	1-1	0-0	2	5	3	2	2	11



#2 BIANCA BOGGS

JUNIOR - GUARD

Waldorf, Md. - St. Mary's Ryken

>> BOGGS' CAREER HIGHS

MINUTES			FREE THROWS		
Season	41	at East Carolina, 11/21/17	Season	7	(2x) last time at East Carolina, 11/21/17
Career	41	at East Carolina, 11/21/17	Career	8	at Delaware, 2/26/16
POINTS			ASSISTS		
Season	26	at Howard, 11/11/17	Season	5	vs. Loyola, 11/25/17
Career	26	at Howard, 11/11/17	Career	7	vs. Drexel, 1/10/15
REBOUNDS			STEALS		
Season	11	at Howard, 11/11/17	Season	4	(2x) last time at St. John's, 11/17/17
Career	11	at Howard, 11/11/17	Career	5	(2x) last time at James Madison, 2/19/16
FIELD GOALS			BLOCKS		
Season	8	at Howard, 11/11/17	Season	2	(2x) last time vs. Loyola, 11/25/17
Career	8	at Howard, 11/11/17	Career	3	vs. James Madison, 1/29/17
3-POINT FIELD GOALS			MISCELLANEOUS		
Season	3	at Howard, 11/11/17	Career in Double Figures		22
Career	3	(4x) last time at Howard, 11/11/17	2017-18 in Double Figures		5

>> BOGGS' CAREER STATISTICS

Season	GP	GS	Min/Avg	FG-FGA	Pct	3pt-Att	Pct	FT-FTA	Pct	Off	Def	Reb	Avg	PF	FO	A	TO	Blk	S	TP	Avg
2015-16	30	24	802/26.7	68-233	.292	17-56	.304	70-102	.686	38	57	95	3.2	81	5	45	55	10	56	223	7.4
2016-17	31	26	734/23.7	82-214	.383	22-74	.297	60-76	.789	44	65	109	3.5	60	0	60	76	17	54	246	7.9
2017-18	5	5	156/31.2	26-59	.441	7-15	.467	22-33	.667	5	23	28	5.6	13	0	13	20	7	14	81	16.2
CAREER	66	55	1692/25.6	176-506	.348	46-145	.317	152-211	.720	87	145	232	3.5	154	5	118	151	34	124	550	8.3

>> 2017-18 GAME-BY-GAME

Opp	Date	GS	Min	FG-A	3FG-A	FT-A	Reb.	A	TO	BLK	STL	PTS
at How.	11/11	*	31	8-18	3-6	7-10	11	1	3	1	4	26
FAIRFIELD	11/14	*	33	4-10	2-3	2-3	3	1	6	1	2	12
at SJU	11/17	*	30	4-10	1-2	6-6	4	3	5	1	4	15
at ECU	11/21	*	41	5-14	0-2	7-14	8	3	3	2	2	17
LOYOLA	11/25	*	21	5-7	1-1	0-0	2	5	3	2	2	11



#3 ASHLEY TAYLOR

SOPHOMORE - GUARD

CHARLOTTESVILLE, VA. - ST. ANNE'S-BELFIELD

>> TAYLOR'S CAREER HIGHS

MINUTES		FREE THROWS	
Season	4 vs. Loyola, 11/25/17	Season	-
Career	7 vs. Mount St. Mary's, 12/18/16	Career	-
POINTS		ASSISTS	
Season	-	Season	1 vs. Loyola, 11/25/17
Career	-	Career	1 (3x) last time vs. Loyola, 11/25/17
REBOUNDS		STEALS	
Season	2 vs. Loyola, 11/25/17	Season	-
Career	2 vs. Loyola, 11/25/17	Career	-
FIELD GOALS		BLOCKS	
Season	-	Season	-
Career	-	Career	-
3-POINT FIELD GOALS		MISCELLANEOUS	
Season	-	Career in Double Figures	0
Career	-	2017-18 in Double Figures	0

>> TAYLOR'S CAREER STATISTICS

Season	GP	GS	Min/Avg	FG-FGA	Pct	3pt-Att	Pct	FT-FTA	Pct	Off	Def	Reb	Avg	PF	FO	A	TO	Blk	S	TP	Avg
2016-17	7	0	22/3.1	0-6	.000	0-4	.000	0-0	.000	1	2	3	0.4	0	0	2	1	0	0	0	0.0
2017-18	2	0	6/3.0	0-0	.000	0-0	.000	0-0	.000	0	2	2	1.0	1	0	1	2	0	0	0	0.0
CAREER	9	0	28/3.1	0-6	.000	0-4	.000	0-0	.000	1	4	5	0.6	1	0	3	2	0	0	0	0.0

>> 2017-18 GAME-BY-GAME

Opp	Date	GS	Min	FG-A	3FG-A	FT-A	Reb.	A	TO	BLK	STL	PTS
at How.	11/11	2	0-0	0-0	0-0	0	0	0	0	0	0	0
FAIRFIELD	11/14		DNP - COACH'S DECISION									
at SJU	11/17		DNP - COACH'S DECISION									
at ECU	11/21		DNP - COACH'S DECISION									
LOYOLA	11/25	4	0-0	0-0	0-0	2	1	2	0	0	0	0



#4 JEANNE GAUMONT

SENIOR - GUARD/FORWARD

SAINT LAMBERT, QUEBEC - CHAMPLAIN COLLEGE

>> GAUMONT'S CAREER HIGHS

MINUTES		FREE THROWS	
Season	16 at East Carolina, 11/21/17	Season	-
Career	31 (3x) last time at Drexel, 2/28/16	Career	3 (2x) last time vs. Towson, 2/12/17
POINTS		ASSISTS	
Season	3 vs. Loyola, 11/25/17	Season	1 at East Carolina, 11/21/17
Career	10 (2x) last time vs. Delaware, 2/14/16	Career	5 at Towson 1/8/16
REBOUNDS		STEALS	
Season	1 (2x) last time vs. Loyola, 11/25/17	Season	2 at East Carolina, 11/21/17
Career	5 (2x) last time at Drexel, 2/28/16	Career	3 (2x) last time at Charleston, 2/21/16
FIELD GOALS		BLOCKS	
Season	1 vs. Loyola, 11/25/17	Season	-
Career	4 (2x) last time at Drexel, 2/28/16	Career	3 vs. Towson, 3/9/16
3-POINT FIELD GOALS		MISCELLANEOUS	
Season	1 vs. Loyola, 11/25/17	Career in Double Figures	2
Career	3 (2x) last time vs. Drexel, 1/10/16	2017-18 in Double Figures	0

>> GAUMONT'S CAREER STATISTICS

Season	GP	GS	Min/Avg	FG-FGA	Pct	3pt-Att	Pct	FT-FTA	Pct	Off	Def	Reb	Avg	PF	FO	A	TO	Blk	S	TP	Avg
2014-15	24	1	190/7.9	14-46	.304	9-34	.265	1-3	.333	5	15	20	0.8	17	0	12	12	3	10	38	1.6
2015-16	24	13	428/17.8	32-96	.333	9-45	.200	10-16	.625	14	38	52	2.2	45	1	30	22	11	19	83	3.5
2016-17	26	0	258/9.9	16-34	.471	6-16	.375	10-16	.625	6	23	29	1.1	35	0	15	14	7	8	48	1.8
2017-18	2	0	23/11.5	1-4	.250	1-2	.500	0-0	.000	0	2	2	1.0	0	0	1	2	0	2	3	1.5
CAREER	76	14	899/11.8	63-180	.350	25-97	.258	21-35	.600	25	78	103	1.4	97	1	58	50	21	39	172	2.3

>> 2017-18 GAME-BY-GAME

Opp	Date	GS	Min	FG-A	3FG-A	FT-A	Reb.	A	TO	BLK	STL	PTS
at How.	11/11		DNP - INJURY									
FAIRFIELD	11/14		DNP - INJURY									
at SJU	11/17		DNP - INJURY									
at ECU	11/21	16	0-1	0-0	0-0	1	1	2	0	2	0	0
LOYOLA	11/25	7	1-3	1-2	0-00	1	0	0	0	0	3	0



#5 MISHA JONES

JUNIOR - GUARD/FORWARD

MANASSAS PARK, VA. - BATTLEFIELD

>> JONES' CAREER HIGHS

MINUTES			
Season	15	at Howard, 11/11/17	
Career	17	at Hofstra, 1/17/16	
POINTS			
Season	6	vs. Loyola, 11/25/17	
Career	7	vs. Norfolk State, 12/17/15	
REBOUNDS			
Season	2	(2x) last time vs. Loyola, 11/25/17	
Career	4	at Hofstra, 1/17/16	
FIELD GOALS			
Season	2	vs. Loyola, 11/25/17	
Career	2	(3x) vs. Loyola, 11/25/17	
3-POINT FIELD GOALS			
Season	2	vs. Loyola, 11/25/17	
Career	2	(2x) last time vs. Loyola, 11/25/17	
FREE THROWS			
Season	1	at Howard, 11/11/17	
Career	3	at James Madison, 2/19/16	
ASSISTS			
Season	4	at Howard, 11/11/17	
Career	4	at Howard, 11/11/17	
STEALS			
Season	2	at Howard, 11/11/17	
Career	2	at Howard, 11/11/17	
BLOCKS			
Season	-	-	
Career	-	-	
MISCELLANEOUS			
Career in Double Figures			0
2017-18 in Double Figures			0

>> JONES' CAREER STATISTICS

Season	GP	GS	Min/Avg	FG-FGA	Pct	3pt-Att	Pct	FT-FTA	Pct	Off	Def	Reb	Avg	PF	FO	A	TO	Blk	S	TP	Avg
2015-16	27	0	180/6.7	12-36	.333	5-20	.250	7-10	.700	1	16	17	0.6	15	0	8	9	0	4	36	1.3
2016-17																					
2017-18	5	0	50/10.6	4-9	.444	3-7	.429	3-4	.750	1	5	6	1.2	8	0	7	8	0	2	14	2.8
CAREER	32	0	230/7.2	16-45	.356	8-27	.296	10-14	.714	2	21	23	0.7	23	0	15	17	0	6	50	1.6

>> 2017-18 GAME-BY-GAME

Opp	Date	GS	Min	FG-A	3FG-A	FT-A	Reb.	A	TO	BLK	STL	PTS
at How.	11/11	15	1-2	0-1	1-2	1	4	2	0	2	3	
FAIRFIELD	11/14	13	1-2	1-1	0-0	2	2	2	0	0	3	
at SJU	11/17	9	0-1	0-1	2-2	1	1	0	0	0	2	
at ECU	11/21	3	0-1	0-0	0-0	0	0	2	0	0	0	
LOYOLA	11/25	10	2-3	2-3	0-0	2	0	2	0	0	6	



#10 NARI GARNER

FRESHMAN - GUARD

TAMPA, FLA. - FREEDOM

>> GARNER'S CAREER HIGHS

MINUTES			
Season	16	vs. Loyola, 11/25/17	
Career	16	vs. Loyola, 11/25/17	
POINTS			
Season	8	(2x) last time vs. Loyola, 11/25/17	
Career	8	(2x) last time vs. Loyola, 11/25/17	
REBOUNDS			
Season	3	at St. John's, 11/17/17	
Career	3	at St. John's, 11/17/17	
FIELD GOALS			
Season	4	vs. Loyola, 11/25/17	
Career	4	vs. Loyola, 11/25/17	
3-POINT FIELD GOALS			
Season	2	vs. Fairfield, 11/14/17	
Career	2	(2x) last time vs. Fairfield, 11/14/17	
FREE THROWS			
Season	2	vs. Fairfield, 11/14/17	
Career	2	(2x) last time vs. Fairfield, 11/14/17	
ASSISTS			
Season	-	-	
Career	1	vs. Mount St. Mary's, 12/18/16	
STEALS			
Season	2	at Howard, 11/11/17	
Career	2	at Howard, 11/11/17	
BLOCKS			
Season	1	vs. Loyola, 11/25/17	
Career	1	vs. Loyola, 11/25/17	
MISCELLANEOUS			
Career in Double Figures			0
2017-18 in Double Figures			0

>> 2017-18 GAME-BY-GAME

Opp	Date	GS	Min	FG-A	3FG-A	FT-A	Reb.	A	TO	BLK	STL	PTS
at How.	11/11	7	0-4	0-3	0-0	1	0	1	0	2	0	
FAIRFIELD	11/14	12	2-7	2-5	2-2	0	0	1	0	1	8	
at SJU	11/17	8	2-4	1-2	1-2	3	0	0	0	1	6	
at ECU	11/21	5	0-1	0-1	0-0	0	0	0	0	0	0	
LOYOLA	11/25	16	4-9	0-3	0-0	1	0	0	1	1	8	

>> GARNER'S CAREER STATISTICS

Season	GP	GS	Min/Avg	FG-FGA	Pct	3pt-Att	Pct	FT-FTA	Pct	Off	Def	Reb	Avg	PF	FO	A	TO	Blk	S	TP	Avg
2016-17	8	0	53/6.6	7-23	.304	3-12	.250	2-2	1.000	3	3	6	0.8	6	0	1	6	0	1	19	2.4
2017-18	5	0	48/9.6	8-25	.320	3-14	.214	3-4	.750	1	4	5	1.0	5	0	0	2	1	5	22	4.4
CAREER	13	0	101/7.8	15-48	.313	6-26	.231	5-6	.833	4	7	11	0.8	11	0	1	8	1	6	41	3.2



#11 NYLA POLLARD

FRESHMAN - GUARD

PRINCESS ANNE - VIRGINIA BEACH, VA.

>> 2017-18 GAME-BY-GAME

Opp	Date	GS	Min	FG-A	3FG-A	FT-A	Reb.	A	TO	BLK	STL	PTS
at How.	11/11	*	31	1-3	0-1	4-6	1	1	1	0	0	6
FAIRFIELD	11/14	*	19	1-3	0-1	0-0	1	1	2	0	1	2
at SJU	11/17	*	33	3-6	1-1	2-2	3	2	5	0	0	9
at ECU	11/21	*	26	1-4	0-1	2-2	2	1	2	0	0	4
LOYOLA	11/25	*	20	2-4	1-2	0-0	0	2	1	0	0	5

>> POLLARD'S CAREER HIGHS

MINUTES		FREE THROWS	
Season	33 at St. John's, 11/17/17	Season	4 at Howard, 11/11/17
Career	33 at St. John's, 11/17/17	Career	4 at Howard, 11/11/17
POINTS		ASSISTS	
Season	9 at St. John's, 11/17/17	Season	2 (2x) last time vs. Loyola, 11/25/17
Career	9 at St. John's, 11/17/17	Career	2 (2x) last time vs. Loyola, 11/25/17
REBOUNDS		STEALS	
Season	3 at St. John's, 11/17/17	Season	1 vs. Fairfield, 11/14/17
Career	3 at St. John's, 11/17/17	Career	1 vs. Fairfield, 11/14/17
FIELD GOALS		BLOCKS	
Season	3 at St. John's, 11/17/17	Season	-
Career	3 at St. John's, 11/17/17	Career	-
3-POINT FIELD GOALS		MISCELLANEOUS	
Season	1 (2x) last time vs. Loyola, 11/25/17	Career in Double Figures	0
Career	1 (2x) last time vs. Loyola, 11/25/17	2017-18 in Double Figures	0

>> POLLARD'S CAREER STATISTICS

Season	GP	GS	Min/Avg	FG-FGA	Pct	3pt-Att	Pct	FT-FTA	Pct	Off	Def	Reb	Avg	PF	FO	A	TO	Blk	S	TP	Avg
2017-18	5	5	129/25.8	8-20	.400	2-6	.333	8-10	.800	1	6	7	1.4	13	1	7	11	0	1	26	5.2
CAREER	5	5	129/25.8	8-20	.400	2-6	.333	8-10	.800	1	6	7	1.4	13	1	7	11	0	1	26	5.2



#12 JENNA GREEN

SENIOR - GUARD

CLIFTON, VA. - CENTREVILLE

>> 2017-18 GAME-BY-GAME

Opp	Date	GS	Min	FG-A	3FG-A	FT-A	Reb.	A	TO	BLK	STL	PTS
at How	11/11	*	31	4-6	1-1	6-8	3	4	1	0	0	15
FAIRFIELD	11/14	*	40	4-13	0-4	3-4	11	8	2	1	2	11
at SJU	11/17	*	35	5-7	0-1	0-0	2	7	3	0	0	10
at ECU	11/21	*	45	4-12	2-2	2-5	3	4	4	0	4	12
LOYOLA	11/25	*	32	4-9	2-4	0-0	3	7	2	1	1	10

>> GREEN'S CAREER HIGHS

MINUTES		FREE THROWS	
Season	45 at East Carolina, 11/21/17	Season	6 at Howard, 11/11/17
Career	45 at East Carolina, 11/21/17	Career	6 (2x) last time at Howard, 11/11/17
POINTS		ASSISTS	
Season	15 at Howard, 11/11/17	Season	8 vs. Fairfield, 11/14/17
Career	16 (2x) last time vs. UNCW, 1/29/15	Career	11 at College of Charleston, 1/6/17
REBOUNDS		STEALS	
Season	11 vs. Fairfield, 11/14/17	Season	3 at East Carolina, 11/21/17
Career	11 vs. Fairfield, 11/14/17	Career	5 at Loyola, 11/23/15
FIELD GOALS		BLOCKS	
Season	5 at St. John's, 11/17/17	Season	1 (2x) last time vs. Loyola, 11/25/17
Career	7 (2x) last time at Towson, 1/20/17	Career	3 vs. College of Charleston, 2/17/17
3-POINT FIELD GOALS		MISCELLANEOUS	
Season	2 (2x) last time vs. Loyola, 11/25/17	Career in Double Figures	17
Career	2 (12x) last time vs. Loyola, 11/25/17	2017-18 in Double Figures	5

>> GREEN'S CAREER STATISTICS

Season	GP	GS	Min/Avg	FG-FGA	Pct	3pt-Att	Pct	FT-FTA	Pct	Off	Def	Reb	Avg	PF	FO	A	TO	Blk	S	TP	Avg
2014-15	31	30	690/22.3	46-124	.371	16-44	.364	22-34	.647	7	31	38	1.2	65	0	100	78	4	31	130	4.2
2015-16	30	24	818/27.3	66-177	.373	18-60	.300	18-31	.581	22	66	88	2.9	60	0	118	67	5	39	168	5.6
2016-17	31	31	944/30.5	78-197	.396	15-61	.246	13-33	.394	26	46	72	2.3	49	0	136	67	14	43	184	5.9
2017-18	5	5	188/37.6	21-47	.447	5-12	.417	11-17	.647	6	16	22	4.4	11	0	30	12	2	7	58	11.6
CAREER	97	90	2640/27.2	211-545	.387	54-177	.305	64-115	.557	61	159	220	2.3	185	0	384	224	25	120	540	5.6



#20 CHANDLER SMITH

JUNIOR - CENTER

PORT TOBACCO, MD. - ST. MARY'S RYKEN

>> SMITH'S CAREER HIGHS

MINUTES			FREE THROWS		
Season	11	at Howard, 11/11/17	Season	-	-
Career	18	at Delaware, 1/26/16	Career	4	vs. Hofstra, 2/7/17
POINTS			ASSISTS		
Season	2	(2x) last time vs. Loyola, 11/25/17	Season	1	at East Carolina, 11/21/17
Career	4	(3x) last time vs. Hofstra, 2/7/17	Career	1	(2x) last time at East Carolina, 11/21/17
REBOUNDS			STEALS		
Season	2	(3x) last time vs. Loyola, 11/25/17	Season	1	vs. Fairfield, 11/14/17
Career	5	vs. Hofstra, 2/7/17	Career	2	(2x) last time vs. Mount St. Mary's, 12/18/16
FIELD GOALS			BLOCKS		
Season	1	(2x) last time vs. Loyola, 11/25/17	Season	2	vs. Fairfield, 11/14/17
Career	2	(2x) last time vs. Delaware State, 11/28/16	Career	3	vs. Mount St. Mary's, 12/18/16
3-POINT FIELD GOALS			MISCELLANEOUS		
Season	-	-	Career in Double Figures	-	0
Career	-	-	2017-18 in Double Figures	-	0

>> SMITH'S CAREER STATISTICS

Season	GP	GS	Min/Avg	FG-FGA	Pct	3pt-Att	Pct	FT-FTA	Pct	Off	Def	Reb	Avg	PF	FO	A	TO	Blk	S	TP	Avg
2015-16	19	0	97/5.1	3-12	.250	0-0	.000	0-6	.000	2	10	12	0.6	13	0	0	5	4	3	6	0.3
2016-17	13	0	77/5.9	6-21	.286	0-0	.000	7-8	.875	2	22	24	1.8	16	1	1	7	11	3	19	1.5
2017-18	5	0	24/4.8	2-5	.400	0-0	.000	0-0	.000	3	3	6	1.2	5	0	1	4	3	1	4	0.8
CAREER	37	0	198/5.4	11-38	.289	0-0	.000	7-14	.500	7	35	42	1.1	34	1	2	16	18	7	29	0.8

>> 2017-18 GAME-BY-GAME

Opp	Date	GS	Min	FG-A	3FG-A	FT-A	Reb.	A	TO	BLK	STL	PTS
at How.	11/11	11	11	0-1	0-0	0-0	2	0	1	1	0	0
FAIRFIELD	11/14	5	1-2	0-0	2	0	0	2	2	1	2	
at SJU	11/17	1	0-0	0-0	0-0	0	0	0	0	0	0	
at ECU	11/21	1	0-0	0-0	0-0	0	1	1	0	0	0	
LOYOLA	11/25	6	1-2	0-0	0-0	2	0	0	0	0	2	



#21 BAILEY EICHNER

FRESHMAN - GUARD/FORWARD

CUDAHY, WISC. - CUDAHY

>> EICHNER'S CAREER HIGHS

MINUTES			FREE THROWS		
Season	6	vs. Loyola, 11/25/17	Season	1	(2x) last time vs. Loyola, 11/25/17
Career	6	vs. Loyola, 11/25/17	Career	1	(2x) last time vs. Loyola, 11/25/17
POINTS			ASSISTS		
Season	1	(2x) last time vs. Loyola, 11/25/17	Season	-	-
Career	1	(2x) last time vs. Loyola, 11/25/17	Career	-	-
REBOUNDS			STEALS		
Season	2	vs. Loyola, 11/25/17	Season	-	-
Career	2	vs. Loyola, 11/25/17	Career	-	-
FIELD GOALS			BLOCKS		
Season	-	-	Season	-	-
Career	-	-	Career	-	-
3-POINT FIELD GOALS			MISCELLANEOUS		
Season	-	-	Career in Double Figures	-	0
Career	-	-	2017-18 in Double Figures	-	0

>> EICHNER'S CAREER STATISTICS

Season	GP	GS	Min/Avg	FG-FGA	Pct	3pt-Att	Pct	FT-FTA	Pct	Off	Def	Reb	Avg	PF	FO	A	TO	Blk	S	TP	Avg
2017-18	2	0	9/4.5	0-1	.000	0-0	.000	2-4	.500	2	1	3	1.5	1	0	0	0	1	0	2	1.0
CAREER	2	0	9/4.5	0-1	.000	0-0	.000	2-4	.500	2	1	3	1.5	1	0	0	0	1	0	2	1.0

>> 2017-18 GAME-BY-GAME

Opp	Date	GS	Min	FG-A	3FG-A	FT-A	Reb.	A	TO	BLK	STL	PTS
at How.	11/11	3	0-0	0-0	1-2	1	0	0	0	0	0	1
FAIRFIELD	11/13											
at SJU	11/17											
at ECU	11/21											
LOYOLA	11/25	6	0-1	0-0	1-2	2	0	0	1	0	1	



#24 ABBY RENDLE

SENIOR - CENTER

RESTON, VA. - SOUTH LAKES

>> RENDLE'S CAREER HIGHS

MINUTES			FREE THROWS		
Season	40	at East Carolina, 11/21/17	Season	8	at St. John's, 11/17/17
Career	40	at East Carolina, 11/21/17	Career	8	at St. John's, 11/17/17
POINTS			ASSISTS		
Season	25	at East Carolina, 11/21/17	Season	3	vs. Loyola, 11/25/17
Career	25	at East Carolina, 11/21/17	Career	4	(2x) last time at Towson, 1/8/16
REBOUNDS			STEALS		
Season	17	at East Carolina, 11/21/17	Season	2	at East Carolina, 11/21/17
Career	17	at East Carolina, 11/21/17	Career	4	(3x) last time vs. Elon, 1/22/17
FIELD GOALS			BLOCKS		
Season	9	at East Carolina, 11/21/17	Season	10	at East Carolina, 11/21/17
Career	11	vs. Drexel, 1/10/16	Career	10	(3x) last time at East Carolina, 12/28/16
3-POINT FIELD GOALS			MISCELLANEOUS		
Season	-	-	Career in Double Figures		40
Career	-	-	2017-18 in Double Figures		4

>> 2017-18 GAME-BY-GAME

Opp	Date	GS	Min	FG-A	3FG-A	FT-A	Reb.	A	TO	BLK	STL	PTS
at How.	11/11	*	9	0-2	0-0	0-0	0	0	0	1	0	0
FAIRFIELD	11/14	*	35	5-13	0-0	0-0	13	1	2	7	1	10
at SIU	11/17	*	30	7-13	0-0	8-9	5	1	2	5	1	22
at ECU	11/21	*	40	9-16	0-0	7-15	17	2	5	10	2	25
LOYOLA	11/25	*	25	4-7	0-0	2-2	9	3	2	7	0	10

>> RENDLE'S CAREER STATISTICS

Season	GP	GS	Min/Avg	FG-FGA	Pct	3pt-Att	Pct	FT-FTA	Pct	Off	Def	Reb	Avg	PF	FO	A	TO	Blk	S	TP	Avg
2014-15	30	22	640/21.3	103-218	.472	0-1	.000	24-49	.490	38	108	146	4.9	50	0	17	39	68	21	230	7.7
2015-16	17	15	464/27.3	100-203	.493	0-0	.000	24-34	.706	33	91	124	7.3	32	1	25	18	53	29	224	13.2
2016-17	31	18	713/23.0	124-249	.498	0-0	.000	39-63	.619	43	114	157	5.1	53	0	32	40	101	26	287	9.3
2017-18	5	5	139/27.8	25-51	.490	0-0	.000	17-26	.654	9	35	44	8.8	10	0	7	11	30	4	67	13.4
CAREER	83	60	1956/23.6	352-721	.488	0-1	.000	104-172	.605	123	348	471	5.7	145	1	81	108	252	80	808	9.7



#25 GABBY ROGERS

FRESHMAN - CENTER

DALLAS, TEXAS - BISHOP LYNCH

>> 2017-18 GAME-BY-GAME

Opp	Date	GS	Min	FG-A	3FG-A	FT-A	Reb.	A	TO	BLK	STL	PTS
at How.	11/11		19	4-6	0-0	1-2	4	1	0	0	0	9
FAIRFIELD	11/14		2	0-0	0-0	0-0	0	0	0	0	0	0
at SIU	11/17		9	2-3	0-0	0-0	2	0	0	0	0	4
at ECU	11/21		4	0-0	0-0	0-0	25	0	0	0	0	0
LOYOLA	11/25		9	0-0	0-0	0-0	3	0	1	0	1	0

MINUTES			FREE THROWS		
Season	19	at Howard, 11/11/17	Season	1	at Howard, 11/11/17
Career	19	at Howard, 11/11/17	Career	1	at Howard, 11/11/17
POINTS			ASSISTS		
Season	9	at Howard, 11/11/17	Season	1	at Howard, 11/11/17
Career	9	at Howard, 11/11/17	Career	1	at Howard, 11/11/17
REBOUNDS			STEALS		
Season	4	at Howard, 11/11/17	Season	1	vs. Loyola, 11/25/17
Career	4	at Howard, 11/11/17	Career	1	vs. Loyola, 11/25/17
FIELD GOALS			BLOCKS		
Season	4	at Howard, 11/11/17	Season	-	-
Career	4	at Howard, 11/11/17	Career	-	-
3-POINT FIELD GOALS			MISCELLANEOUS		
Season	-	-	Career in Double Figures		0
Career	-	-	2017-18 in Double Figures		0

Season	GP	GS	Min/Avg	FG-FGA	Pct	3pt-Att	Pct	FT-FTA	Pct	Off	Def	Reb	Avg	PF	FO	A	TO	Blk	S	TP	Avg
2017-18	5	0	43/8.6	6-10	.600	0-0	.000	1-2	.500	0	11	11	2.2	7	0	1	1	0	1	13	2.6
CAREER	5	0	43/8.6	6-10	.600	0-0	.000	1-2	.500	0	11	11	2.02	7	0	1	1	0	1	13	2.6



#30 VICTORIA REYNOLDS

SOPHOMORE - FORWARD

PASADENA, MD./ARCHBISCHOP SPALDING

>> 2017-18 GAME-BY-GAME

Opp	Date	GS	Min	FG-A	3FG-A	FT-A	Reb.	A	TO	BLK	STL	PTS
at How.	11/11	*	25	6-12	1-2	6-8	6	3	4	0	2	19
FAIRFIELD	11/14	*	37	4-6	0-0	1-2	7	1	3	2	5	9
at SJU	11/17	*	35	4-11	0-1	0-0	10	1	4	1	5	8
at ECU	11/21	*	41	4-8	0-0	5-6	7	8	3	1	3	13
LOYOLA	11/25	*	30	6-8	1-2	0-0	7	2	0	1	2	13

MINUTES

Season	39	at East Carolina, 11/21/17
Career	39	at East Carolina, 11/21/17

POINTS

Season	19	at Howard, 11/11/17
Career	19	at Howard, 11/11/17

REBOUNDS

Season	10	at St. John's, 11/17/17
Career	10	at St. John's, 11/17/17

FIELD GOALS

Season	6	(2x) last time vs. Loyola, 11/25/17
Career	6	(2x) last time vs. Loyola, 11/25/17

3-POINT FIELD GOALS

Season	1	(2x) last time vs. Loyola, 11/25/17
Career	2	at UNCW, 1/15/17

FREE THROWS

Season	6	at Howard, 11/11/17
Career	6	at Howard, 11/11/17

ASSISTS

Season	8	at East Carolina, 11/21/17
Career	8	at East Carolina, 11/21/17

STEALS

Season	5	(2x) last time at St. John's, 11/17/17
Career	6	at Towson, 1/20/17

BLOCKS

Season	2	vs. Fairfield, 11/14/17
Career	2	vs. Fairfield, 11/14/17

MISCELLANEOUS

Career in Double Figures	7
2017-18 in Double Figures	3

Season	GP	GS	Min/Avg	FG-FGA	Pct	3pt-Att	Pct	FT-FTA	Pct	Off	Def	Reb	Avg	PF	FO	A	TO	Blk	S	TP	Avg
2016-17	28	0	466/16.6	51-104	.490	5-12	.417	36-46	.783	44	45	89	3.2	42	0	21	30	4	33	143	5.1
2017-18	5	5	166/33.2	24-45	.533	2-5	.400	12-16	.750	10	27	37	7.4	12	0	15	14	5	17	62	12.4
CAREER	33	5	632/19.2	75-149	.503	7-17	.412	48-62	.774	54	72	126	3.8	54	0	36	44	10	50	205	6.2



2017-18 Tribe Women's Basketball

2017-18 Tribe Women's Basketball
William & Mary Season Schedule/Results & Leaders (as of Nov 26, 2017)
All games

RECORD:	OVERALL	HOME	AWAY	NEUTRAL
ALL GAMES	4-1	2-0	2-1	0-0
CONFERENCE	0-0	0-0	0-0	0-0
NON-CONFERENCE	4-1	2-0	2-1	0-0

Date	Opponent		Score	Att.	High Points	High Rebounds
11/11/17	at Howard University	W	83-71	450	(26)Boggs, Bianca	(11)Boggs, Bianca
11/14/17	FAIRFIELD	W	57-47	322	(12)Boggs, Bianca	(13)Rendle, Abby
11/17/17	at St. John's		81-92 L	323	(22)Rendle, Abby	(10)Reynolds, Victoria
11/21/17	at ECU	Wot	71-65	841	(25)Rendle, Abby	(17)Rendle, Abby
11/25/17	LOYOLA (MD.)	W	70-49	345	(13)Reynolds, Victoria	(9)Rendle, Abby

* - Conference game

Attendance Summary	Games	Attend	Avg/Game
Home	2	667	334
Away	3	1614	538
Neutral	0	0	0
Total	5	2281	456

2017-18 Tribe Women's Basketball **William & Mary Combined Team Statistics (as of Nov 26, 2017)** **All games**

RECORD:	OVERALL	HOME	AWAY	NEUTRAL
ALL GAMES	4-1	2-0	2-1	0-0
CONFERENCE	0-0	0-0	0-0	0-0
NON-CONFERENCE	4-1	2-0	2-1	0-0

#	Player	gp-gs	min	avg	Total		3-Point		F-Throw		Rebounds				pf	dq	a	to	blk	stl	pts	avg
					fg-fga	fg%	3fg-fga	3fg%	ft-fa	ft%	off	def	tot	avg								
02	Boggs, Bianca	5-5	156	31.2	26-59	.441	7-15	.467	22-33	.667	5	23	28	5.6	13	0	13	20	7	14	81	16.2
24	Rendle, Abby	5-5	139	27.8	25-51	.490	0-0	.000	17-26	.654	9	35	44	8.8	10	0	7	11	30	4	67	13.4
30	Reynolds, Victoria	5-5	166	33.2	24-45	.533	2-5	.400	12-16	.750	10	27	37	7.4	12	0	15	14	5	17	62	12.4
12	Green, Jenna	5-5	188	37.6	21-47	.447	5-12	.417	11-17	.647	6	16	22	4.4	11	0	30	12	2	7	58	11.6
11	Pollard, Nyla	5-5	129	25.8	8-20	.400	2-6	.333	8-10	.800	1	6	7	1.4	13	1	7	11	0	1	26	5.2
10	Garner, Nari	5-0	48	9.6	8-25	.320	3-14	.214	3-4	.750	1	4	5	1.0	5	0	0	2	1	5	22	4.4
05	Jones, Misha	5-0	50	10.0	4-9	.444	3-7	.429	3-4	.750	1	5	6	1.2	8	0	7	8	0	2	14	2.8
25	Rogers, Gabby	5-0	43	8.6	6-10	.600	0-0	.000	1-2	.500	0	11	11	2.2	7	0	1	1	0	1	13	2.6
00	Underwood, Libby	5-0	44	8.8	3-9	.333	2-5	.400	2-6	.333	0	2	2	0.4	1	0	2	5	0	0	10	2.0
33	Gaumont, Jeanne	2-0	23	11.5	1-4	.250	1-2	.500	0-0	.000	0	2	2	1.0	0	0	1	2	0	2	3	1.5
21	Eichner, Bailey	2-0	9	4.5	0-1	.000	0-0	.000	2-4	.500	2	1	3	1.5	1	0	0	0	1	0	2	1.0
20	Smith, Chandler	5-0	24	4.8	2-5	.400	0-0	.000	0-0	.000	3	3	6	1.2	5	0	1	4	3	1	4	0.8
03	Taylor, Ashley	2-0	6	3.0	0-0	.000	0-0	.000	0-0	.000	0	2	2	1.0	1	0	1	2	0	0	0	0.0
Team											8	11	19				1					
Total.....		5	1025		128-285	.449	25-66	.379	81-122	.664	46	148	194	38.8	87	1	85	93	49	54	362	72.4
Opponents.....		5	1025		122-315	.387	28-85	.329	52-92	.565	67	128	195	39.0	105	-	74	105	16	46	324	64.8

TEAM STATISTICS	WM	OPP	Date	Opponent	Score	Att.
SCORING	362	324	11/11/17	at Howard University	w 83-71	450
Points per game	72.4	64.8	11/14/17	FAIRFIELD	w 57-47	322
Scoring margin	+7.6	-	11/17/17	at St. John's	L 81-92	323
FIELD GOALS-ATT	128-285	122-315	11/21/17	at ECU	Wot 71-65	841
Field goal pct	.449	.387	11/25/17	LOYOLA (MD.)	w 70-49	345
3 POINT FG-ATT	25-66	28-85	* - Conference game			
3-point FG pct	.379	.329				
3-pt FG made per game	5.0	5.6				
FREE THROWS-ATT	81-122	52-92				
Free throw pct	.664	.565				
F-Throws made per game	16.2	10.4				
REBOUNDS	194	195				
Rebounds per game	38.8	39.0				
Rebounding margin	-0.2	-				
ASSISTS	85	74				
Assists per game	17.0	14.8				
TURNOVERS	93	105				
Turnovers per game	18.6	21.0				
Turnover margin	+2.4	-				
Assist/turnover ratio	0.9	0.7				
STEALS	54	46				
Steals per game	10.8	9.2				
BLOCKS	49	16				
Blocks per game	9.8	3.2				
ATTENDANCE	667	1614				
Home games-Avg/Game	2-334	3-538				
Neutral site-Avg/Game	-	0-0				

Score by Periods	1st	2nd	3rd	4th	OT	Totals
William & Mary	98	81	93	78	12	362
Opponents	72	70	100	76	6	324

WILLIAM & MARY RADIO AND TV CHART

NOTES: W&M looks for its third straight victory as it continues a stretch of five games in 10 days by welcoming Davidson ... The Tribe was picked to finish third in the CAA, which is the highest pick in school history, in the Preseason Poll ... Junior Bianca Boggs leads the team averaging 16.2 points in the first five contests, while senior Abby Rendle is averaging 13.4 ppg. Both Sophomore Victoria Reynolds (12.4 ppg.) and Jenna Green (11.6 ppg.) are averaging double-figures this season.

RECORD	2017-18	LAST YR	STATS	W&M	OPP	DAV	OPP	W&M'S LAST THREE GAMES		
OVERALL	4-1	20-11	FG%	.449	.387	.334	.398	Nov. 17	at St. John's	L, 81-92
CAA	0-0	9-9	FT%	.664	.565	.719	.663		Rendle 22, 5 blks, Green 10 pts, Boggs 15 pts.	
HOME	2-0	11-5	3PT%	.379	.329	.307	.311	Nov. 21	at East Carolina	W, 71-65 (ot)
AWAY/NEUTRAL	2-1/0-0	8-5/1-1	POINTS	72.4	64.8	59.2	60.8		Rendle 25 pts, 17 reb, 10 blks, Boggs 17 pts	
			REBOUNDS	38.8	39.0	39.3	39.5	Nov. 25	LOYOLA	W, 70-49
			TURNOVERS	18.6	21.0	11.2	13.0		Reynolds 13 pts, Boggs 11 pts, Rendle & Green 10 pts	
			<ul style="list-style-type: none">Guard from N.H. that hopes to fill some of the void in scoring that was lost last season.Made her collegiate debut scoring four points in the win at Howard (11/11/17).Scored a career-high with five points at St. John's (11/17/17).Won back-to-back N.H. Player of the Year honors and tabbed McDonald's All-America nominee.Finished her HS career as her school's leading scorer with 1,253 points.					POINTS 5 vs. St. John's (11/17/17) REBOUNDS 1 vs. Howard (11/11/17) ASSISTS 1 vs. Howard (11/11/17) LAST GAME: PLAYED FIVE MINUTES		
	.333		<ul style="list-style-type: none">Guard that can play the 1-3 positions and has seen action in all 64 career games.Had 17 points, eight rebounds, three assists, two blocks and steals at ECU (11/21/17).Scored a career-high 26 points and career-high 11 rebounds in the win at Howard (11/11/17).Added 15 points and four steals and rebounds at St. John's (11/17/17).Scored in double-figures 21 times in career, including every game this season.					POINTS 26 vs. Howard (11/11/17) REBOUNDS 11 vs. Howard (11/11/17) ASSISTS 7 vs. Drexel (1/10/16) LAST GAME: 17 PTS, 8 REB, 3 AST, 2 BLK		
	.333							POINTS 2 (2x) last time vs. Loyola (11/25/17) REBOUNDS 2 (2x) last time at Towson (1/6/15) ASSISTS 3 (2x) last time at Towson (1/6/15) LAST GAME: 2 REB, 1 AST IN 3 MINS		
	.400							POINTS 10 (2x) last time vs. Delaware (2/14/16) REBOUNDS 5 (2x) last time at Drexel (2/28/16) ASSISTS 5 at Towson (1/8/16) LAST GAME: 3 PTS, 1 REB IN 7 MINS		
BELEFIELD)	-							<ul style="list-style-type: none">Experienced player that has seen action in 75 career games with 14 starts.Made her season debut at ECU (11/21/17) with a rebound, assist, and two steals in 16 minutes.Scored a SH eight points, four rebounds, two assists, and a steal at Norfolk State (12/15/16).Set career-highs in points (10), rebounds (5), and blocks (2) against Drexel (1/10/16)Tied a career-high with 10 points in a start against Delaware (2/14/16)		
	-		<ul style="list-style-type: none">Named a team captain for this season.Canned a pair of triples in the win against Loyola (11/25/17).Played for the 1st time since 2015-16, and scored three rebounds with 4 ast at HU (11/11/17).Scored a career-high seven points and added a steal in a win vs. Norfolk State (12/17/15)Played a career-high 17 minutes while grabbing a career-high four rebounds at Hofstra (1/17/16)					POINTS 8 (3x) last time vs. Loyola (11/25/17) REBOUNDS 3 at St. John's (11/17/17) ASSISTS 1 vs. Mount St. Mary's (12/18/16) LAST GAME: 8 PTS, 1 REB, 1 BLK, 1 STL		
	.444		<ul style="list-style-type: none">Combo guard that should see more action this season because of her shooting ability.Tied a career-high with eight points in the win versus Loyola (11/25/17).Added six points and a career-high three rebounds at St. John's (11/17/17).Had a career-high eight points and added a steal in a career-high 12 mins. vs. Fairfield (11/14/17).Daughter of former NFL running back Charlie Garner.					POINTS 9 vs. St. John's (11/17/17) REBOUNDS 3 at St. John's (11/17/17) ASSISTS 2 vs. St. John's (11/17/17) LAST GAME: 5 PTS, 2 AST IN 20 MINS		
	.750		<ul style="list-style-type: none">Freshman guard that has earned the start in every contest this season.Scored a career-high nine points and grabbed three rebounds at St. John's (11/17/17).Earned her first career start in the win at Howard (11/11/17) with six points a rebound & assist.Helped lead Princess Anne to four straight VHSL State Titles during her high school career.Ran the 400-meter, 4x1, and 4x4 for her Princess Ann in high school.					POINTS 16 vs. UNCW (1/22/15) REBOUNDS 11 vs. Fairfield (11/14/17) ASSISTS 11 at College of Charleston (1/6/17) LAST GAME: 10 PTS, 3 REB, 7 AST, 1 BLK		
	.429		<ul style="list-style-type: none">Two-time CAA All-Academic Team selection that has been named a team captain this season.Notched her first double-double with 11 pts and rebs with eight assists vs. Fairfield (11/14/17)Scored 15 points in the season opener at Howard (11/11/17), adding four dimes.Dished out a career-high 11 assists at College of Charleston. (1/6/17).Ranks fourth in W&M history with 384 career assists.					POINTS 4 (3x) last time vs. Hofstra (2/7/17) REBOUNDS 5 vs. Hofstra (2/7/17) BLOCKS 3 vs. Mount St. Mary's (12/18/16) LAST GAME: 2 PTS, 2 REB IN 6 MINS		
	.320		<ul style="list-style-type: none">Appeared in 37 games, including all five games this year, as a reserve center.Tied a career-high with four points, while adding a career-high five rebounds vs. Hofstra (2/7/17).Registered a career-high three rejections in the win versus Mount St. Mary's (12/18/16).Tied a career-high with four points, while adding three boards in the win vs. Del State (11/28/16).Father, John, played basketball at Duke from 1985-1989.					POINTS 1 (2x) last time vs. Loyola (11/25/17) REBOUNDS 2 vs. Loyola (11/25/17) BLOCKS 1 vs. Loyola (11/25/17) LAST GAME: 1 PT, 2 REB, 1 BLK IN 6 MINS		
	.214		<ul style="list-style-type: none">Athletic freshman that can play both the guard or forward position.Scored a point, grabbed a pair of rebounds, and a block versus Loyola (11/25/17).Made her debut in the win at Howard (11/11/17) scoring a point and a grabbing a rebound.Three-sport athlete in high school playing volleyball, basketball, and track & field.Earned All-Conference awards in high school for all three sports.					POINTS 23 at East Carolina (11/27/17) REBOUNDS 17 at East Carolina (11/27/17) BLOCKS 10 (3x) last time at ECU (12/28/16) LAST GAME: 10 PTS, 9 REB, 7 BLK, 3 AST		
	.320		<ul style="list-style-type: none">Two-time CAA All-Defensive Team selection that was tabbed to the Preseason All-CAA 2nd-TeamRecorded her third triple-double with CH's of 25 pts, 17 rebs, and 10 blks at ECU (11/21/17).Notched a then-season-high 22 points in the setback at St. John's (11/17/17).Ranks second all-time in school history with 252 career blocks.Owens the single season record with 101 blocks, which she did last year.					POINTS 9 vs. Howard (11/11/17) REBOUNDS 4 vs. Howard (11/11/17) ASSISTS 1 vs. Howard (11/11/17) LAST GAME: 3 REB, 1 STL IN 9 MINUTES		
	.800		<ul style="list-style-type: none">Freshman from Dallas, Texas that can play both the forward and center position.Scored nine points and had four rebounds in her collegiate debut at Howard (11/11/17).Averaged nine points, seven rebounds, and two blocks, during her career.Member of the school's band, which were the TPSMEA State Marching Champions in 2015.Comes from a basketball family her mom, Monique, and sister, Danielle, played hoops in college.					POINTS 19 vs. Howard (11/11/17) REBOUNDS 10 at St. John's (11/17/17) STEALS 6 at Towson (1/20/17) LAST GAME: 13 PTS, 7 REB, 2 AST, 2 STL		
	.333		<ul style="list-style-type: none">Two-time CAA All-Academic Team selection that was tabbed to the Preseason All-CAA 2nd-TeamRecorded her third triple-double with CH's of 25 pts, 17 rebs, and 10 blks at ECU (11/21/17).Notched a then-season-high 22 points in the setback at St. John's (11/17/17).Ranks second all-time in school history with 252 career blocks.Owens the single season record with 101 blocks, which she did last year.					POINTS 9 vs. Rhode Island (2/8/17) REBOUNDS 1 (2x) vs. George Mason (2/18/17) STEALS 1 (2x) vs. George Mason (2/18/17) LAST GAME: DNP - NCAA TRANSFER RULES		
	.400		<ul style="list-style-type: none">Transfer from George Washington that must sit out the 2017-18 season because of NCAA rules.Saw action in nine games with the Colonials during the 2016-17 campaign.Enjoyed the best game of her college career with nine points at Rhode Island.Local product that played her high school hoops at Nanesmond-Suffolk.Is her high school's all-time leading scorer with 2,051 career points.					POINTS 9 vs. Rhode Island (2/8/17) REBOUNDS 1 (2x) vs. George Mason (2/18/17) STEALS 1 (2x) vs. George Mason (2/18/17) LAST GAME: DNP - NCAA TRANSFER RULES		
DLK (GEORGE WASHINGTON)	-		<ul style="list-style-type: none">Transfer from George Washington that must sit out the 2017-18 season because of NCAA rules.Saw action in nine games with the Colonials during the 2016-17 campaign.Enjoyed the best game of her college career with nine points at Rhode Island.Local product that played her high school hoops at Nanesmond-Suffolk.Is her high school's all-time leading scorer with 2,051 career points.					POINTS 9 vs. Rhode Island (2/8/17) REBOUNDS 1 (2x) vs. George Mason (2/18/17) STEALS 1 (2x) vs. George Mason (2/18/17) LAST GAME: DNP - NCAA TRANSFER RULES		
	-		<ul style="list-style-type: none">Transfer from George Washington that must sit out the 2017-18 season because of NCAA rules.Saw action in nine games with the Colonials during the 2016-17 campaign.Enjoyed the best game of her college career with nine points at Rhode Island.Local product that played her high school hoops at Nanesmond-Suffolk.Is her high school's all-time leading scorer with 2,051 career points.					POINTS 9 vs. Rhode Island (2/8/17) REBOUNDS 1 (2x) vs. George Mason (2/18/17) STEALS 1 (2x) vs. George Mason (2/18/17) LAST GAME: DNP - NCAA TRANSFER RULES		
	-		<ul style="list-style-type: none">Transfer from George Washington that must sit out the 2017-18 season because of NCAA rules.Saw action in nine games with the Colonials during the 2016-17 campaign.Enjoyed the best game of her college career with nine points at Rhode Island.Local product that played her high school hoops at Nanesmond-Suffolk.Is her high school's all-time leading scorer with 2,051 career points.					POINTS 9 vs. Rhode Island (2/8/17) REBOUNDS 1 (2x) vs. George Mason (2/18/17) STEALS 1 (2x) vs. George Mason (2/18/17) LAST GAME: DNP - NCAA TRANSFER RULES		
	-		<ul style="list-style-type: none">Transfer from George Washington that must sit out the 2017-18 season because of NCAA rules.Saw action in nine games with the Colonials during the 2016-17 campaign.Enjoyed the best game of her college career with nine points at Rhode Island.Local product that played her high school hoops at Nanesmond-Suffolk.Is her high school's all-time leading scorer with 2,051 career points.					POINTS 9 vs. Rhode Island (2/8/17) REBOUNDS 1 (2x) vs. George Mason (2/18/17) STEALS 1 (2x) vs. George Mason (2/18/17) LAST GAME: DNP - NCAA TRANSFER RULES		

NOTES: